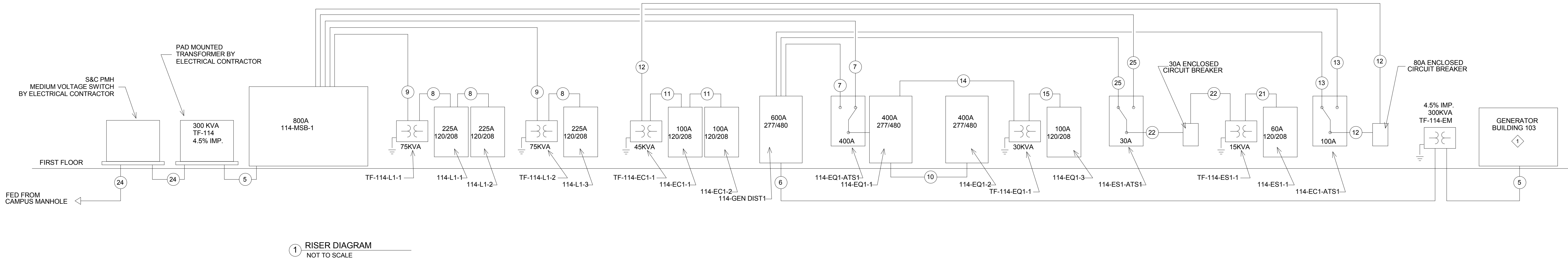
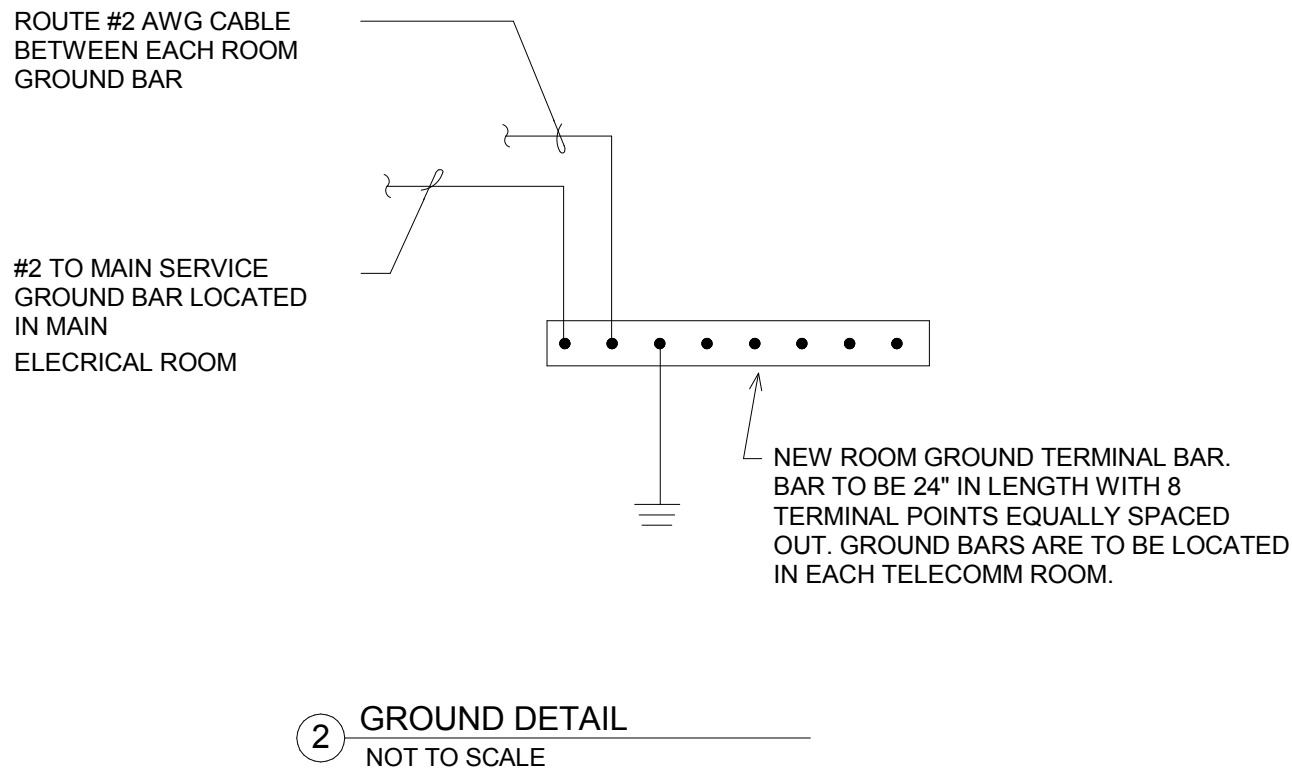


FEEDER SCHEDULE	
1	(8 SETS) 3" C-4#500KCM WITH 1#2/0 GRD
2	(6 SETS) 3-1/2" C-4#400KCM WITH 1#1/0 GRD
3	(5 SETS) 3-1/2" C-4#400KCM WITH 1#1/0 GRD
4	(4 SETS) 3" C-4#350KCM WITH 1#3/0 GRD
5	(2 SETS) 3-1/2" C-4#500KCM WITH 1#1/0 GRD
6	(2 SETS) 3" C-4#350KCM WITH 1#2 GRD
7	3-1/2" C-4#500KCM WITH 1#1/0 GRD
8	2-1/2" C-4#4/0 WITH 1#4 GRD
9	1-1/2" C-3#1 WITH 1#6 GRD
10	2" C-4#3/0 WITH 1#4 GRD
11	2" C-4#1/0 WITH 1#6 GRD
12	1" C-3#4 WITH 1#4 GRD
13	1-1/4" C-4#3 WITH 1#8 GRD
14	1" C-3#6 WITH 1#10 GRD
15	1-1/4" C-4#3 WITH 1#8 GRD
16	SEE ME SHEETS.
17	8 EMPTY 3-1/2" CONDUITS FOR FUTURE SERVICE
18	5 EMPTY 3-1/2" CONDUITS FOR FUTURE SERVICE
19	2-1/2" C-4#250KCM WITH 1#2 GRD
20	1-1/2" C-3#3/0 WITH 1#6 GRD
21	1" C-4#6 WITH 1#8 GRD
22	3/4" C-3#10 WITH 1#10 GRD
23	2" C-3#1/0 WITH 1#6 GRD
24	(2 SETS) 2-1/2" C-3#250KCM
25	3/4" C-4#10 WITH 1#10 GRD

KEY NOTES

1 EXISTING GENERATOR DISTRIBUTION IS LOCATED WITHIN GENERATOR BUILDING 103. EXISTING DISTRIBUTION IS A FEDERAL PACIFIC SWITCHBOARD. ELECTRICAL CONTRACTOR SHALL HAVE A 600A/3P CIRCUIT BREAKER FABRICATED TO FIT INTO EXISTING DISTRIBUTION BOARD TO FEED NEW 228KVA TRANSFORMER. BREAKER SHALL BE PROVIDED WITH AN ELECTRONIC TRIP UNIT WITH LSIG ADJUSTABILITY.



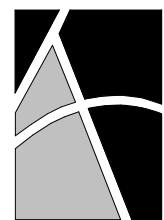
100% OWNER REVIEW
NOT FOR CONSTRUCTION
12/16/2011



RSP Architects
1220 Marshall Street NE
Minneapolis
Minnesota 55413-1036
612.677.7100
612.677.7499 fax
www.rsparch.com

NOTICE: The designs shown and described herein including all technical drawings, graphics, and models thereof, are proprietary and cannot be copied, duplicated or commercially exploited, in whole or in part, without express written permission of RSP Architects. These are available for limited review and evaluation by clients, consultants, contractors, government agencies, vendors and office personnel only in accordance with this Notice.

© Copyright RSP Architects 2011. All rights reserved.



ARRAY
healthcare facilities solutions

CONSULTANTS:

Structural
Van Sickle, Allen & Assoc.
2955 Xenium Lane N
Suite 10
Plymouth, MN 55441

Civil
EVS
10250 Valley View Road
Suite 113
Eden Prairie, MN 55344

Landscape
Damon Farber Assoc.
923 Nicollet Mall
Minneapolis, MN 55402

Fire Protection
Gary Trivinski Associates
Engineering
94 Boston Hill
Larksville, PA 18851-3298



DUNHAM ASSOCIATES, Inc.
50 South Park Street, Suite 100
Minneapolis, Minnesota 55402-1000
Phone: 612.445.7000
Fax: 612.445.7001
www.dunhaminc.com
mechanical & electrical
consulting engineering
TOWNSHIP OF LAKES

I hereby certify that this plan, specification or report was prepared by me or under my direct supervision and that I am a duly licensed Engineer under the laws of the State of Minnesota.

Signature _____

Registration No. _____

Date 11/17/2011

APPROVED: SERVICE LINE DIRECTOR	DATE	APPROVED: INFECTION CONTROL NURSE	DATE
APPROVED: GEMS COORDINATOR	DATE	APPROVED: PATIENT SAFETY	DATE
APPROVED: PROJECTS SECTION MANAGER	DATE	APPROVED: CHIEF OF POLICE	DATE
APPROVED: DIRECTOR TWO	DATE	APPROVED: SAFETY MANAGER	DATE

DRAWING TITLE ELECTRICAL RISER DIAGRAM	
APPROVED: CHIEF OF STAFF	DATE
APPROVED: MEDICAL CENTER DIRECTOR	DATE

PROJECT TITLE LONG TERM INTERMEDIATE PSYCHIATRIC UNIT	
BUILDING NO.	100
CHECKED BY MJA	DATE JAT
LOCATION 4801 VETERANS DR. SAINT CLOUD, MN	

12/16/2011
100% SCALE AS NOTED
PROJECT NO. 2032.001.00
CAD FILE
DWG NO. E010
SHEET NO. 02

