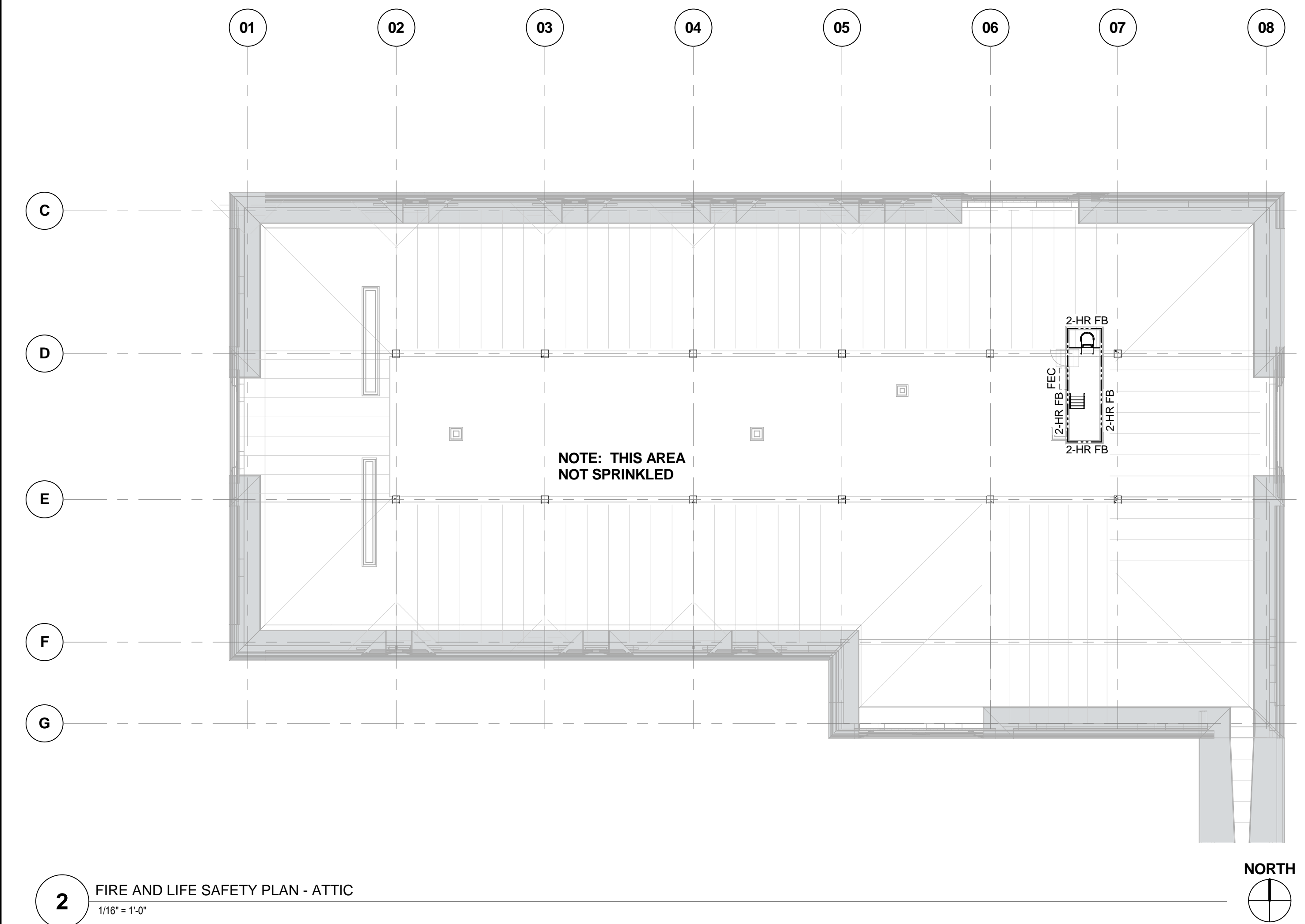


1 FIRE AND LIFE SAFETY PLAN - CRAWL SPACE  
1/16" = 1'-0"



2 FIRE AND LIFE SAFETY PLAN - ATTIC  
1/16" = 1'-0"

### CODE SUMMARY

**BUILDING CODE:**  
2009 NFPA 101 LIFE SAFETY CODE  
2009 INTERNATIONAL BUILDING CODE (IBC)  
UNIFORM FEDERAL ACCESSIBILITY STANDARDS (UFAS) - INCLUDING VA SUPPLEMENT, BARRIER FREE DESIGN  
ENERGY POLICY ACT OF 2005 (EPAct)  
2009 NFPA NATIONAL FIRE CODES WITH THE EXCEPTION OF NFPA 5000 AND NFPA 900  
2011 NATIONAL ELECTRICAL CODE (NEC)  
2009 NATIONAL STANDARD PLUMBING CODE  
2009 INTERNATIONAL MECHANICAL CODE  
2009 INTERNATIONAL FUEL GAS CODE  
OCCUPATIONAL SAFETY AND HEALTH ADMINISTRATION (OSHA) STANDARDS

**OCCUPANCY GROUP CLASSIFICATION:**  
NEW HEALTH CARE (NFPA) I-2 (IBC)

**TYPE OF CONSTRUCTION:**  
TYPE II (222) - (NFPA) 1B (IBC)

**NUMBER OF STORIES:**  
ONE (FUTURE SECOND)

**SQUARE FOOTAGE / HEIGHT:**  
PSYCH UNIT: = 15,057 SF  
MECH ROOMS: = 2,852 SF  
TOTAL BUILDING: = 17,909 SF

**LINK:** = 1,471 SF  
**HEIGHT:** = 30'-8"

**OCCUPANT LOAD:**  
15,057 SF / 120 GROSS = 126 OCCUPANTS (PSYCH UNIT)  
2,852 / 300 GROSS = 10 OCCUPANTS (MECH)  
1,471 SF / 100 GROSS = 15 OCCUPANTS (LINK)  
TOTAL OCCUPANTS = 151 OCCUPANTS

**EXITS REQUIRED:**  
2

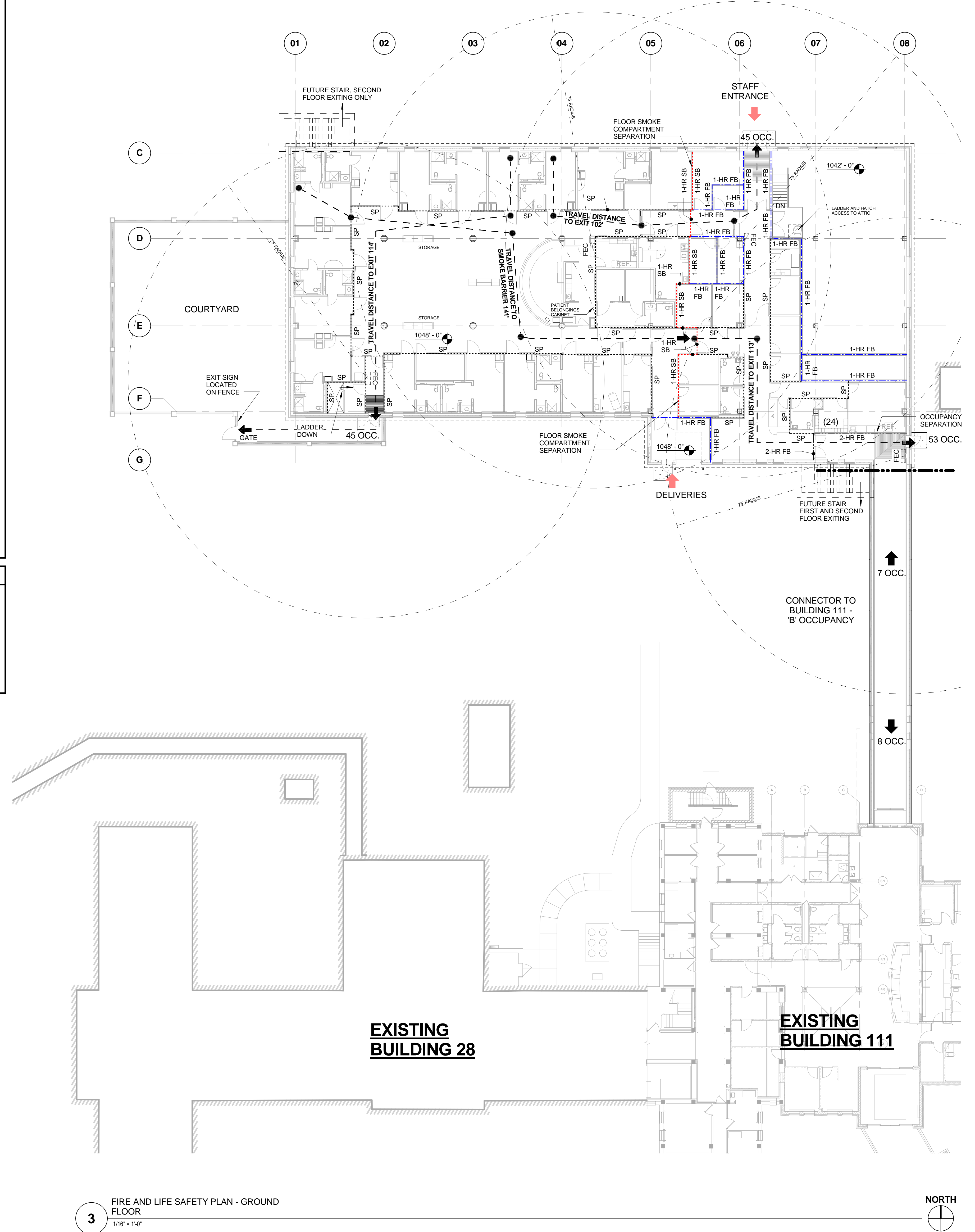
**EXITS PROVIDED:**  
3

**SMOKE DETECTION:**  
PER 2009 NFPA 101 LIFE SAFETY CODE

**FIRE PROTECTION:**  
FULLY SPRINKLED - QUICK RESPONSE - GROUND LEVEL ONLY

### LEGEND

1-HR FB	NEW 1-HOUR FIRE-RATED BARRIER
2-HR FB	NEW 2-HOUR FIRE-RATED BARRIER
1-HR SB	NEW 1-HOUR FIRE-RATED SMOKE BARRIER
SP	NEW SMOKE PARTITION



3 FIRE AND LIFE SAFETY PLAN - GROUND FLOOR  
1/16" = 1'-0"

100% OWNER REVIEW  
NOT FOR CONSTRUCTION  
12/16/2011



**RSP Architects**  
1220 Marshall Street NE  
Minneapolis  
Minnesota 55413-1036  
612.677.7100  
612.677.7499 fax  
www.rsparch.com

NOTICE: The designs shown and described herein including all technical drawings, graphics, and models thereof, are proprietary and cannot be copied, duplicated or commercially exploited, in whole or in part, without express written permission of RSP Architects. These are available for limited review and evaluation by clients, consultants, contractors, government agencies, vendors and office personnel only in accordance with this Notice.

© Copyright RSP Architects 2011. All rights reserved.



### CONSULTANTS:

**Structural**  
Van Sickle, Allen & Assoc.  
2955 Xenium Lane N  
Suite 110  
Plymouth, MN 55441

**Civil**  
EVS  
10250 Valley View Road  
Suite 113  
Eden Prairie, MN 55344

**MEP**  
Dunham Associates  
50 South Sixth Street  
Suite 1100  
Minneapolis, MN 55402

**Fire Protection**  
Gary Travinski Associates  
Engineering  
94 Boston Hill  
Larkville, MN 18651-3298

**Landscape**  
Damon Farbar Assoc.  
823 Nicollet Mall  
Minneapolis, MN 55402

I hereby certify that this plan, specification or report was prepared by me or under my direct supervision and that I am a duly licensed Architect under the laws of the State of Minnesota.

Signature \_\_\_\_\_  
Registration No. \_\_\_\_\_  
Date \_\_\_\_\_

APPROVED SERVICE LINE DIRECTOR	DATE	APPROVED INFECTION CONTROL NURSE	DATE
APPROVED GENE COORDINATOR	DATE	APPROVED PATIENT SAFETY	DATE
APPROVED PROJECTS SECTION MANAGER	DATE	APPROVED CHIEF OF POLICE	DATE
APPROVED DIRECTOR FMS	DATE	APPROVED SAFETY MANAGER	DATE

DRAWING TITLE	DATE
FIRE AND LIFE SAFETY PLAN	
APPROVED CHIEF OF STAFF	DATE
APPROVED MEDICAL CENTER DIRECTOR	DATE

PROJECT TITLE	DATE
LONG TERM / INTERMEDIATE PSYCHIATRIC UNIT	12/16/2011
BUILDING No.	CHECKED BY
4801 VETERANS DRIVE, ST CLOUD MN	Author

DRAWING NO.	DATE
6100	12/16/2011
PROJECT NO.	COST FILE
1027.001.00	

