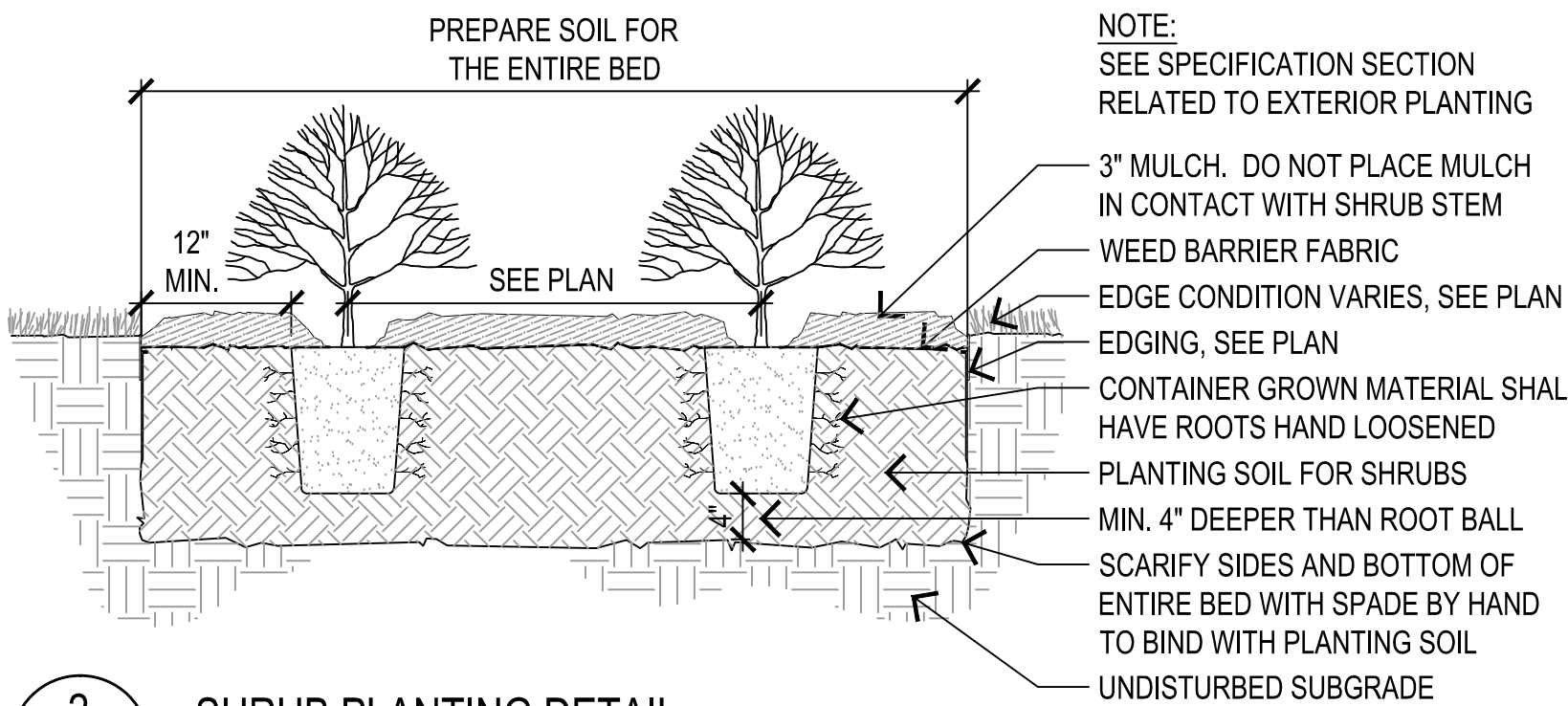


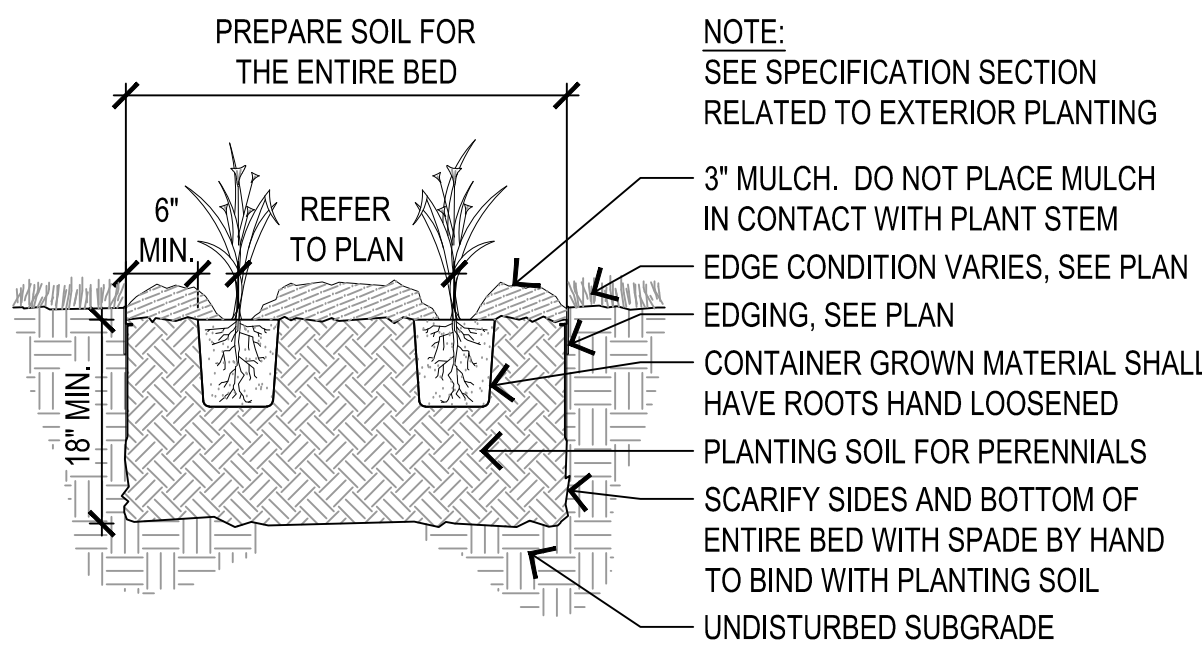
1 TREE PLANTING DETAIL

LP5.01 SCALE: 1/2" = 1'-0"



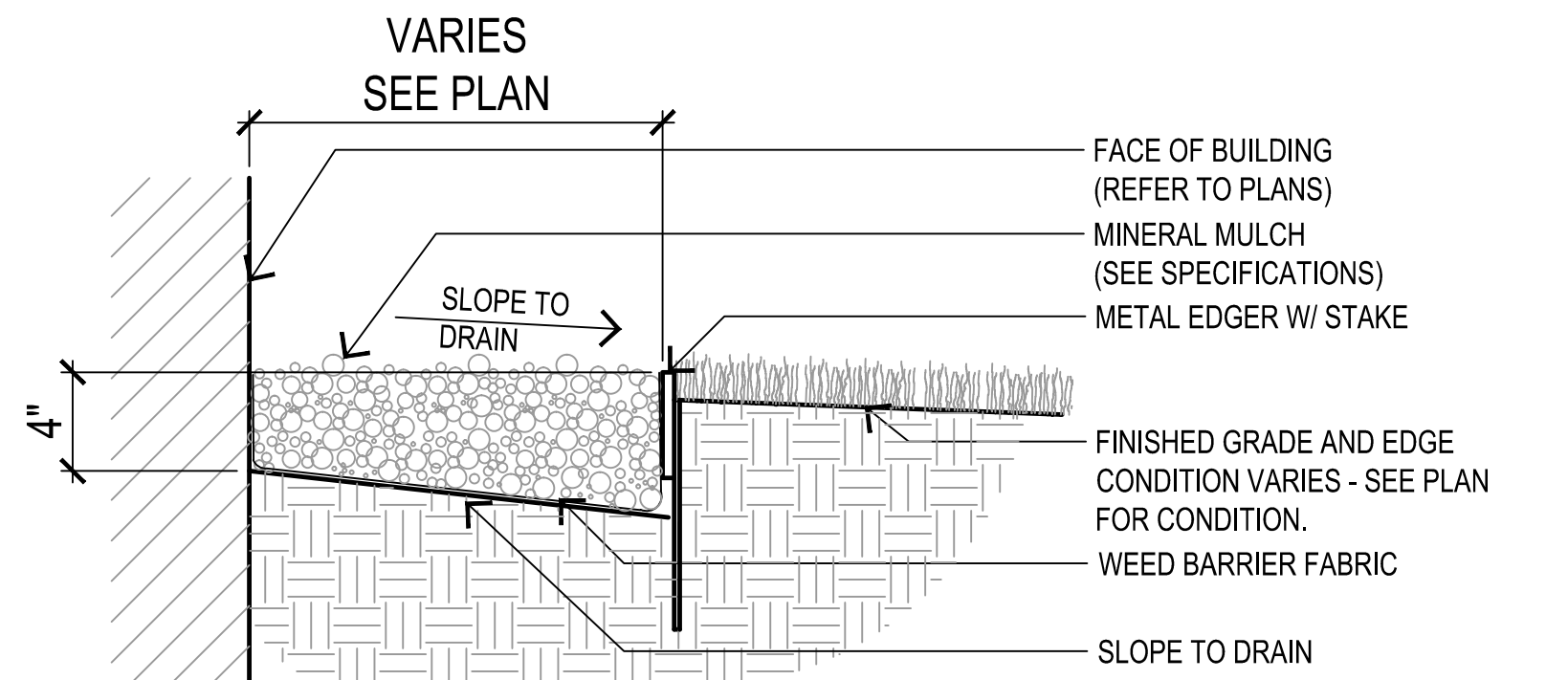
2 SHRUB PLANTING DETAIL

LP5.01 SCALE: 3/4" = 1'-0"



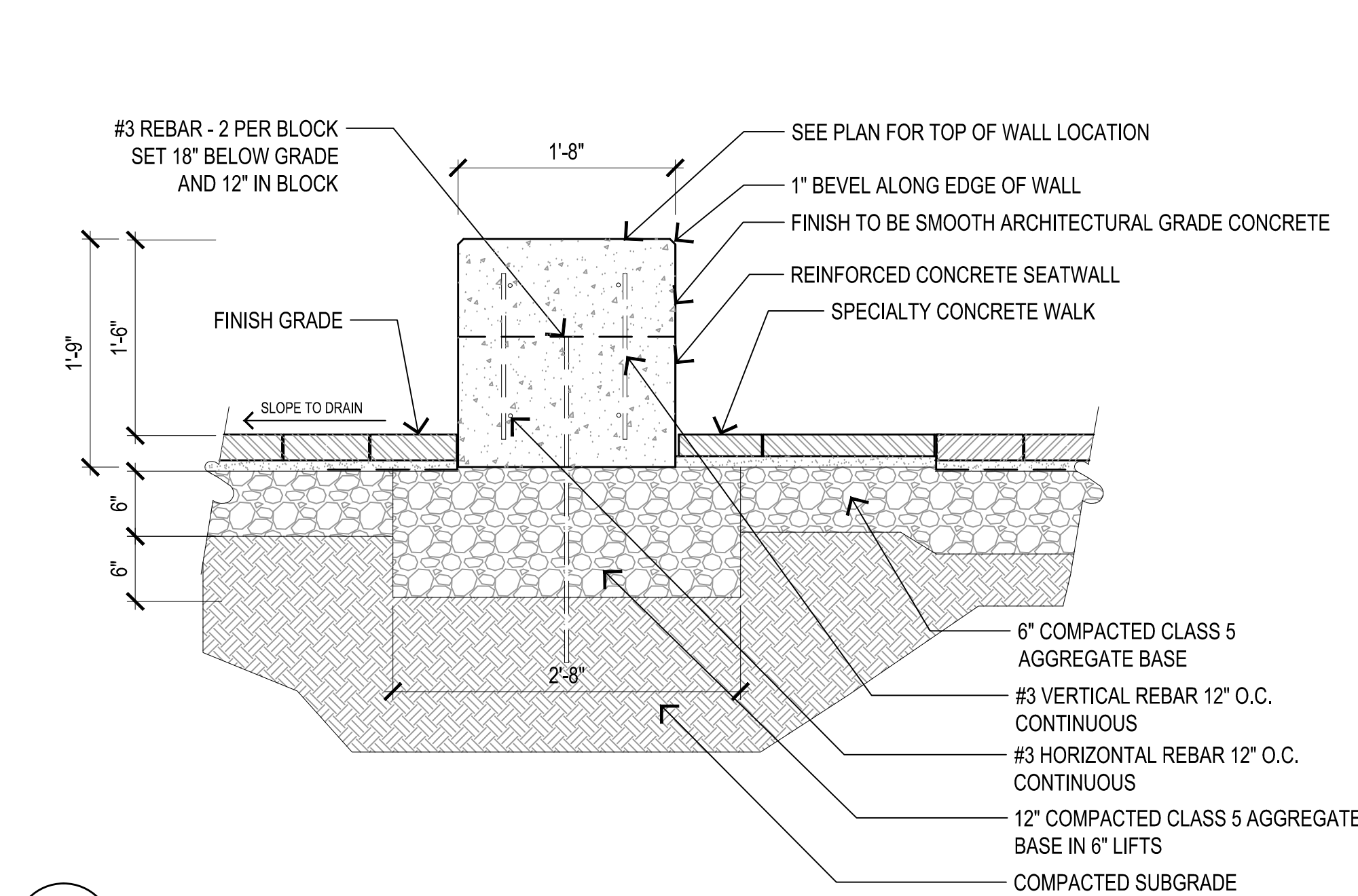
3 PERENNIAL PLANTING DETAIL

LP5.01 SCALE: 3/4" = 1'-0"



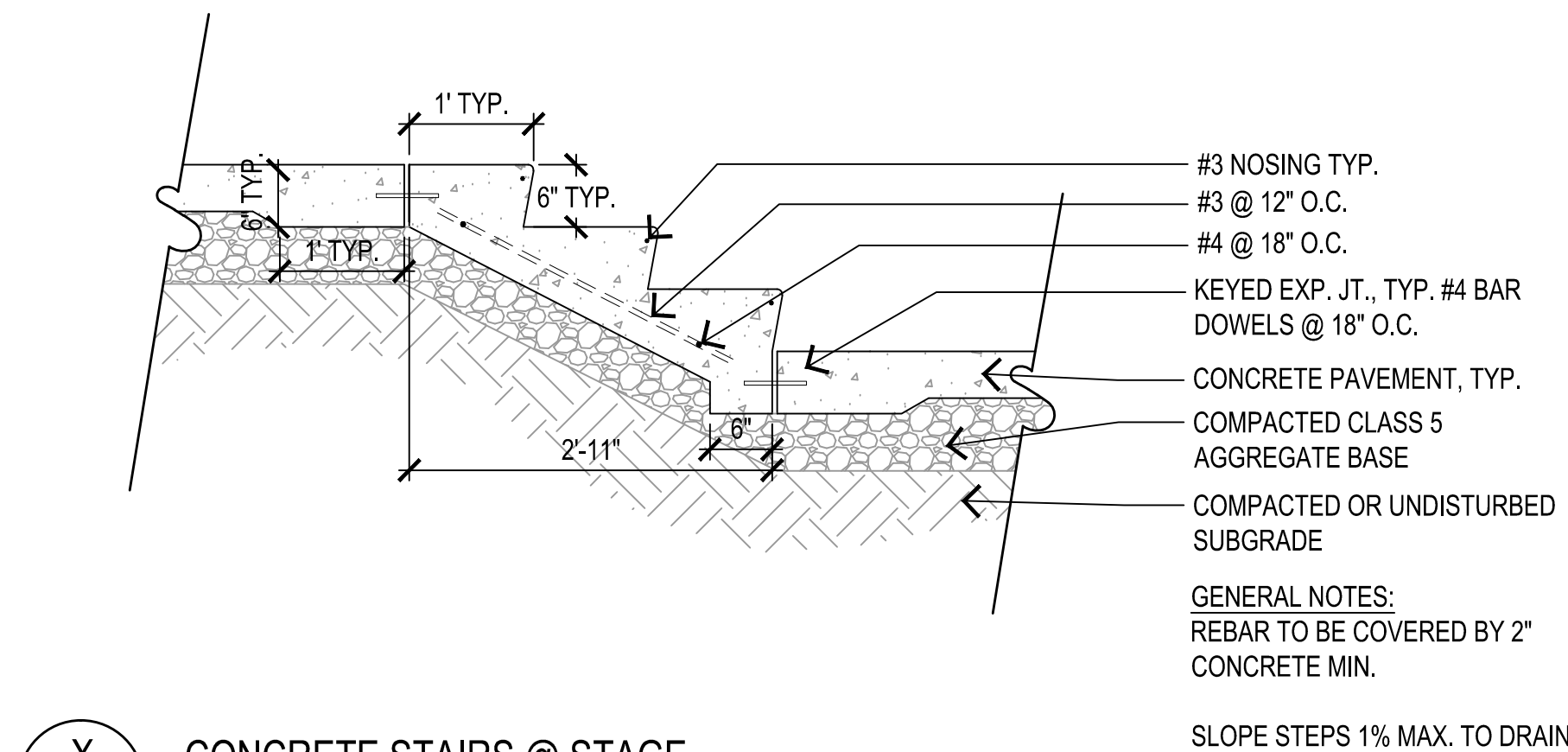
X XX MAINTENANCE STRIP - MINERAL MULCH

SCALE: 1-1/2" = 1'-0"



X XX CONCRETE SEATWALL

SCALE: 1-1/2" = 1'-0"



X XX CONCRETE STAIRS @ STAGE

SCALE: 3/4" = 1'-0"

GENERAL NOTES

- LANDSCAPE CONTRACTOR SHALL INSPECT THE SITE AND BECOME FAMILIAR WITH EXISTING CONDITIONS RELATING TO THE NATURE AND SCOPE OF WORK.
- LANDSCAPE CONTRACTOR SHALL VERIFY PLAN LAYOUT AND BRING TO THE ATTENTION OF THE LANDSCAPE ARCHITECT DISCREPANCIES WHICH MAY COMPROMISE THE DESIGN OR INTENT OF THE LAYOUT.
- LANDSCAPE CONTRACTOR SHALL ASSURE COMPLIANCE WITH APPLICABLE CODES AND REGULATIONS GOVERNING THE WORK AND MATERIALS SUPPLIED.
- LANDSCAPE CONTRACTOR SHALL PROTECT EXISTING ROADS, CURBS/GUTTERS, TRAILS, TREES, LAWNS AND SITE ELEMENTS DURING CONSTRUCTION OPERATIONS. DAMAGE TO SAME SHALL BE REPAIRED AT NO ADDITIONAL COST TO THE OWNER.
- LANDSCAPE CONTRACTOR SHALL VERIFY ALIGNMENT AND LOCATION OF UNDERGROUND AND ABOVE GRADE UTILITIES AND PROVIDE THE NECESSARY PROTECTION FOR SAME BEFORE CONSTRUCTION BEGINS.
- LANDSCAPE CONTRACTOR SHALL COORDINATE THE PHASES OF CONSTRUCTION AND PLANTING INSTALLATION WITH OTHER CONTRACTORS WORKING ON SITE.
- UNDERGROUND UTILITIES SHALL BE INSTALLED SO THAT TRENCHES DO NOT CUT THROUGH ROOT SYSTEMS OF EXISTING TREES TO REMAIN.
- EXISTING CONTOURS, TRAILS, VEGETATION, CURB/GUTTER AND OTHER ELEMENTS ARE BASED UPON INFORMATION SUPPLIED TO THE LANDSCAPE ARCHITECT BY OTHERS. LANDSCAPE CONTRACTOR SHALL VERIFY DISCREPANCIES PRIOR TO CONSTRUCTION AND NOTIFY LANDSCAPE ARCHITECT OF SAME.
- HORIZONTAL AND VERTICAL ALIGNMENT OF PROPOSED WALKS, TRAILS OR ROADWAYS ARE SUBJECT TO FIELD ADJUSTMENT REQUIRED TO CONFORM TO LOCALIZED TOPOGRAPHIC CONDITIONS AND TO MINIMIZE TREE REMOVAL AND GRADING. CHANGES IN ALIGNMENT AND GRADES MUST BE APPROVED BY THE LANDSCAPE ARCHITECT PRIOR TO IMPLEMENTATION.
- LANDSCAPE CONTRACTOR SHALL REVIEW THE SITE FOR DEFICIENCIES IN SITE CONDITIONS WHICH MIGHT NEGATIVELY AFFECT PLANT ESTABLISHMENT, SURVIVAL OR WARRANTY. UNDESIRABLE SITE CONDITIONS SHALL BE BROUGHT TO THE ATTENTION OF THE LANDSCAPE ARCHITECT PRIOR TO BEGINNING OF WORK.
- EXISTING TREES OR SIGNIFICANT SHRUB MASSINGS FOUND ON SITE SHALL BE PROTECTED AND SAVED UNLESS NOTED TO BE REMOVED OR ARE LOCATED IN AN AREA TO BE GRADED. QUESTIONS REGARDING EXISTING PLANT MATERIAL SHALL BE BROUGHT TO THE ATTENTION OF THE LANDSCAPE ARCHITECT PRIOR TO REMOVAL.
- EXISTING TREES TO REMAIN, UPON DIRECTION OF LANDSCAPE ARCHITECT, SHALL BE FERTILIZED AND PRUNED TO REMOVE DEAD WOOD, DAMAGED AND RUBBING BRANCHES.
- LANDSCAPE CONTRACTOR SHALL PREPARE AND SUBMIT A WRITTEN REQUEST FOR THE SUBSTANTIAL COMPLETION INSPECTION OF LANDSCAPE AND SITE IMPROVEMENTS PRIOR TO SUBMITTING FINAL PAY REQUEST.
- SYMBOLS ON PLAN DRAWING TAKE PRECEDENCE OVER SCHEDULES IF DISCREPANCIES IN QUANTITIES EXIST. SPECIFICATIONS AND DETAILS TAKE PRECEDENCE OVER NOTES.
- REFER TO CIVIL PLANS FOR UTILITY PLANS AND SITE GRADING INFORMATION.
- REFER TO ARCHITECTURAL PLANS FOR BUILDING AND CANOPIES PLANS/DETAILS.
- REFER TO ELECTRICAL PLANS FOR CONDUIT LAYOUTS AND DETAILS.
- REFER TO LANDSCAPE PLANS FOR SIDEWALK, WALL AND PERGOLA LAYOUTS, SITE FURNISHINGS, LANDSCAPE LIGHTING DETAILS AND PLANTING PLANS. REFER TO LANDSCAPE PLANS FOR CONCRETE JOINTING DETAILS.
- HORIZONTAL AND VERTICAL ALIGNMENT OF PROPOSED WALKS AND PATHS ARE SUBJECT TO FIELD ADJUSTMENT REQUIRED TO CONFORM TO LOCALIZED TOPOGRAPHIC CONDITIONS AND TO MINIMIZE TREE REMOVAL AND GRADING. ALIGNMENT OF WALKS AND PATHS TO BE STAKED AND MUST BE APPROVED BY THE LANDSCAPE ARCHITECT PRIOR TO IMPLEMENTATION.
- CONTRACTOR TO UTILIZE GPS TO LAY OUT SITE IMPROVEMENTS.
- REFER TO LIBRARY PLANS FOR LIBRARY INFORMATION.
- ADJUSTMENTS IN LOCATION OF PROPOSED PLANT MATERIALS MAY BE NEEDED IN FIELD. LANDSCAPE ARCHITECT MUST BE NOTIFIED PRIOR TO ADJUSTMENT OF PLANTS.
- PLANT MATERIALS TO BE INSTALLED PER PLANTING DETAILS.
- PLANT MATERIAL SHALL BE FERTILIZED UPON INSTALLATION WITH DRIED BONE MEAL, OTHER APPROVED FERTILIZER MIXED IN WITH THE PLANTING SOIL PER THE MANUFACTURER'S INSTRUCTIONS OR MAY BE TREATED FOR SUMMER AND FALL INSTALLATION WITH AN APPLICATION OF GRANULAR 10-0-5 OF 12 OZ. PER 2.5" CALIPER TREE AND 6 OZ. PER SHRUB WITH AN ADDITIONAL APPLICATION OF 10-0-10 THE FOLLOWING SPRING IN THE TREE SAUCER.
- PLANTING AREAS RECEIVING PERENNIALS SHALL RECEIVE A MINIMUM OF 18" DEPTH OF PLANTING SOIL CONSISTING OF 45 PARTS TOPSOIL, 45 PARTS SCREENED COMPOST AND 10 PARTS SAND OR AS OTHERWISE SPECIFIED.
- TREE WRAPPING MATERIAL SHALL BE TWO-WALLED PLASTIC SHEETING APPLIED FROM TRUNK FLARE TO FIRST BRANCH. WRAP SMOOTH-BARKED DECIDUOUS TREES PLANTED IN THE FALL PRIOR TO DECEMBER 1 AND REMOVE WRAPPING AFTER MAY 1.
- 3/16" THICK STEEL EDGER TO BE USED TO CONTAIN SHRUBS AND PERENNIALS WHERE PLANTING BED MEETS SOD UNLESS OTHERWISE NOTED.
- PERENNIAL PLANTING BEDS TO RECEIVE 3" DEEP SHREDDED HARDWOOD MULCH WITH NO WEED BARRIER.
- SHRUB BED MASSINGS TO RECEIVE 3" DEEP SHREDDED HARDWOOD MULCH WITH FIBER MAT WEED BARRIER.
- CONIFEROUS & DECIDUOUS TREES ARE TO RECEIVE 4" DEEP SHREDDED HARDWOOD MULCH AND SHALL HAVE NO MULCH IN DIRECT CONTACT WITH THE TREE TRUNK.
- MAINTENANCE STRIPS, WHERE ILLUSTRATED, TO HAVE EDGER AND MULCH AS INDICATED ON DRAWINGS OR IN SPECIFICATIONS.
- LANDSCAPE CONTRACTOR SHALL WARRANTY NEW PLANT MATERIAL THROUGH ONE CALENDAR YEAR FROM THE DATE OF SUBSTANTIAL COMPLETION. NO PARTIAL ACCEPTANCE WILL BE CONSIDERED.
- UNLESS NOTED OTHERWISE, THE APPROPRIATE DATES FOR SPRING PLANT MATERIAL INSTALLATION IS FROM THE TIME GROUND HAS THAWED TO JUNE 15.
- CONIFEROUS PLANTING IS ACCEPTABLE FROM AUGUST 15 TO OCTOBER 1. FALL DECIDUOUS PLANTING IS ACCEPTABLE FROM THE FIRST FROST UNTIL NOVEMBER 15. ADJUSTMENTS TO PLANTING DATES MUST BE APPROVED IN WRITING BY THE LANDSCAPE ARCHITECT.

IRRIGATION NOTES

- LANDSCAPE CONTRACTOR SHALL BE RESPONSIBLE FOR PROVIDING AN IRRIGATION LAYOUT PLAN AND SPECIFICATION AS PART OF THE SCOPE OF WORK. SUBMIT LAYOUT PLAN AND SPECIFICATIONS FOR APPROVAL BY THE LANDSCAPE ARCHITECT PRIOR TO ORDER AND/OR CONSTRUCTION. IT SHALL BE THE LANDSCAPE CONTRACTOR'S RESPONSIBILITY TO INSURE THAT SODDED/SEEDED AND PLANTED AREAS ARE IRRIGATED PROPERLY, INCLUDING THOSE AREAS DIRECTLY AROUND AND ABUTTING BUILDING FOUNDATION.
- LANDSCAPE CONTRACTOR SHALL VERIFY (EXISTING) IRRIGATION SYSTEM LAYOUT AND CONFIRM COMPLETE LIMITS OF IRRIGATION PRIOR TO SUPPLYING SHOP DRAWINGS.
- LANDSCAPE CONTRACTOR SHALL PROVIDE THE OWNER WITH AN IRRIGATION SCHEDULE APPROPRIATE TO THE PROJECT SITE CONDITIONS AND TO PLANTED MATERIAL GROWTH REQUIREMENTS.
- LANDSCAPE CONTRACTOR SHALL INSURE THAT SOIL CONDITIONS AND COMPACTION ARE ADEQUATE TO ALLOW FOR PROPER DRAINAGE AROUND THE CONSTRUCTION SITE. UNDESIRABLE CONDITIONS SHALL BE BROUGHT TO THE ATTENTION OF THE LANDSCAPE ARCHITECT PRIOR TO BEGINNING OF WORK. IT SHALL BE THE LANDSCAPE CONTRACTOR'S RESPONSIBILITY TO INSURE PROPER SURFACE AND SUBSURFACE DRAINAGE IN PLANTING AREAS.

TURF NOTES

- SOD AREAS DISTURBED DUE TO GRADING UNLESS NOTED OTHERWISE.
- WHERE SOD ABUTS PAVED SURFACES, FINISHED GRADE OF SOD/SEED SHALL BE HELD 1" BELOW SURFACE ELEVATION OF TRAIL, SLAB, CURB, ETC.
- SOD SHALL BE LAID PARALLEL TO THE CONTOURS AND SHALL HAVE STAGGERED JOINTS. ON SLOPES STEEPER THAN 3:1 OR IN DRAINAGE SWALES, SOD SHALL BE STAKED SECURELY.
- UNLESS NOTED OTHERWISE, THE APPROPRIATE DATES FOR SPRING SEED & SOD PLACEMENT IS FROM THE TIME GROUND HAS THAWED TO JUNE 15.
- FALL SODDING IS GENERALLY ACCEPTABLE FROM AUGUST 15 TO NOVEMBER 1. FALL SEEDING IS GENERALLY ACCEPTABLE FROM AUGUST 15 TO SEPTEMBER 15. ADJUSTMENTS TO SOD/SEED PLANTING DATES MUST BE APPROVED IN WRITING BY THE LANDSCAPE ARCHITECT.

PLANTING NOTES

- NO PLANTS WILL BE INSTALLED UNTIL FINAL GRADING AND CONSTRUCTION HAS BEEN COMPLETED IN THE IMMEDIATE AREA.
- PROPOSED PLANT MATERIAL SHALL COMPLY WITH THE CURRENT EDITION OF THE AMERICAN STANDARD FOR NURSERY STOCK, ANSI Z60.1. UNLESS NOTED OTHERWISE, DECIDUOUS SHRUBS SHALL HAVE AT LEAST 5 CANES AT THE SPECIFIED HEIGHT. ORNAMENTAL TREES SHALL HAVE NO Y CROTCHES AND SHALL BEGIN BRANCHING NO LOWER THAN 3' FEET ABOVE THE ROOT BALL. STREET AND BOULEVARD TREES SHALL BEGIN BRANCHING NO LOWER THAN 6' ABOVE PAVED SURFACE.
- PROPOSED PLANT MATERIAL SHALL BE LOCATED AND STAKED AS SHOWN ON PLAN. LANDSCAPE ARCHITECT MUST APPROVE STAKING OF PLANT MATERIAL PRIOR TO DIGGING.
- NO PLANT MATERIAL SUBSTITUTIONS WILL BE ACCEPTED UNLESS APPROVAL IS GRANTED BY THE LANDSCAPE ARCHITECT TO THE LANDSCAPE CONTRACTOR PRIOR

NOTES

SYM	BASE QTY	ALT#1 QTY	ALT#3 QTY	COMMON NAME	SCIENTIFIC NAME	SIZE	ROOT COND.	ROOT BALL / CONT. SIZE	COMMENTS
TREES									
A	4	3		PARKWAY NORWAY MAPLE	Acer platanoides 'Parkway Norway'	4" CAL	B&B	28" MIN. DIA.	STRAIGHT WITH SINGLE LEADER
B				HACKBERRY	Celtis occidentalis	2.5" CAL	B&B	28" MIN. DIA.	STRAIGHT WITH SINGLE LEADER
C			6	AUTUMN RADIANCE MAPLE	Acer rubrum 'Autumn Radiance'	2.5" CAL	B&B	28" MIN. DIA.	STRAIGHT WITH SINGLE LEADER
D			6	PRAIRIE FIRE CRABAPPLE	Malus 'Prairiefire'	2" CAL	B&B	28" MIN. DIA.	STRAIGHT WITH SINGLE LEADER
E			8	DONALD WYMAN CRAB	Malus 'Donald Wyman'	2" CAL	B&B	28" MIN. DIA.	STRAIGHT WITH SINGLE LEADER
SHRUBS									
AA			49	ANTHONY WATERER SPIREA	Spiraea x bumalda 'Anthony Waterer'	24" HGT	POT	#5 CONT.	PLANT 32" O.C.
BB			27	SEM FALSE SPIREA		30" HGT	POT	#5 CONT.	PLANT 36" O.C.
PERENNIALS									
PA		84		KARL FOERSTER	Calamagrostis x acutiflora 'Karl Foerster'		POT	#3 CONT.	PLANT 24" O.C.
PB		110		PRAIRIE DROPSEED	Sporobolus heterolepis		POT	#3 CONT.	PLANT 24" O.C.
PC		53		WALKERS LOW CATMINT	Nepeta x faassenii 'Walkers Low'		POT	#3 CONT.	PLANT 24" O.C.
SEED MIXES AND MAINTENANCE STRIP									
Turf Grass - SOD									
Maintenance Strip 4-6" Dresser Trap Rock									

PLANTING SCHEDULE

APPROVED: PROJECT LTR. INITIALS	DATE	APPROVED: EXISTING CONDI. NOTES	DATE	APPROVED: WALL LAYOUT/SCAPE DETAIL	DATE	APPROVED: TREE LAYOUT	DATE	APPROVED: PLANTING SCHEDULE	DATE
APPROVED: SITE COORDINATOR	DATE	APPROVED: PLANT SELECTION	DATE	APPROVED: PLANTING SCHEDULE	DATE	APPROVED: PLANTING SCHEDULE	DATE	APPROVED: PLANTING SCHEDULE	DATE
APPROVED: PLANTING SCHEDULE	DATE	APPROVED: PLANTING SCHEDULE	DATE	APPROVED: PLANTING SCHEDULE	DATE	APPROVED: PLANTING SCHEDULE	DATE	APPROVED: PLANTING SCHEDULE	DATE
APPROVED: PLANTING SCHEDULE	DATE	APPROVED: PLANTING SCHEDULE	DATE	APPROVED: PLANTING SCHEDULE	DATE	APPROVED: PLANTING SCHEDULE	DATE	APPROVED: PLANTING SCHEDULE	DATE

PLANTING DETAILS

100% OWNER REVIEW
NOT FOR CONSTRUCTION
12/16/2011

REVISION

DATE

RSP Architects
1220 Marshall Street NE
Minneapolis
Minnesota 55413-1036
612.877.7100
612.877.7489 fax
www.rsparch.com

NOTICE: The designs shown and described herein including all technical drawings, graphics, and models thereof, are proprietary and cannot be copied, duplicated or commercially exploited, in whole or in part, without express written permission of RSP Architects. These are available for limited review and evaluation by clients, consultants, contractors, government agencies, vendors and other personnel only in accordance with this Notice.

© Copyright RSP Architects 2011. All rights reserved.

ARRAY
healthcare facilities solutions

CONSULTANTS

Structural
Van Sickels, Allen & Assoc.
2955 Xenium Lane N
Suite 110
Plymouth, MN 55441

Civil
EVS
10250 Valley View Road
Suite 113
Eden Prairie, MN 55434

MEP
Dunham Associates
50 South Sixth Street
Suite 1100
Minneapolis, MN 55402

Fire Protection
Gary Trivinski Associates
Engineering
94 Boston Hill
Larksville, PA 18651-3298

Landscape
Damon Farber Assoc.
823 Nicolet Mall
Minneapolis, MN 55402

I hereby certify that this plan, specification or report was prepared by me or under my direct supervision and that I am a duly licensed Architect under the laws of the State of Minnesota.

Signature _____

Registration No. _____

Date _____

APPROVED: PROJECT LTR. INITIALS	DATE	APPROVED: EXISTING CONDI. NOTES	DATE	APPROVED: WALL LAYOUT/SCAPE DETAIL	DATE	APPROVED: TREE LAYOUT	DATE	APPROVED: PLANTING SCHEDULE	DATE
APPROVED: SITE COORDINATOR	DATE	APPROVED: PLANT SELECTION	DATE	APPROVED: PLANTING SCHEDULE	DATE	APPROVED: PLANTING SCHEDULE	DATE	APPROVED: PLANTING SCHEDULE	DATE
APPROVED: PLANTING SCHEDULE	DATE	APPROVED: PLANTING SCHEDULE	DATE	APPROVED: PLANTING SCHEDULE	DATE	APPROVED: PLANTING SCHEDULE	DATE	APPROVED: PLANTING SCHEDULE	DATE
APPROVED: PLANTING SCHEDULE	DATE	APPROVED: PLANTING SCHEDULE	DATE	APPROVED: PLANTING SCHEDULE	DATE	APPROVED: PLANTING SCHEDULE	DATE	APPROVED: PLANTING SCHEDULE	DATE

VAMC
SAINT CLOUD
MN