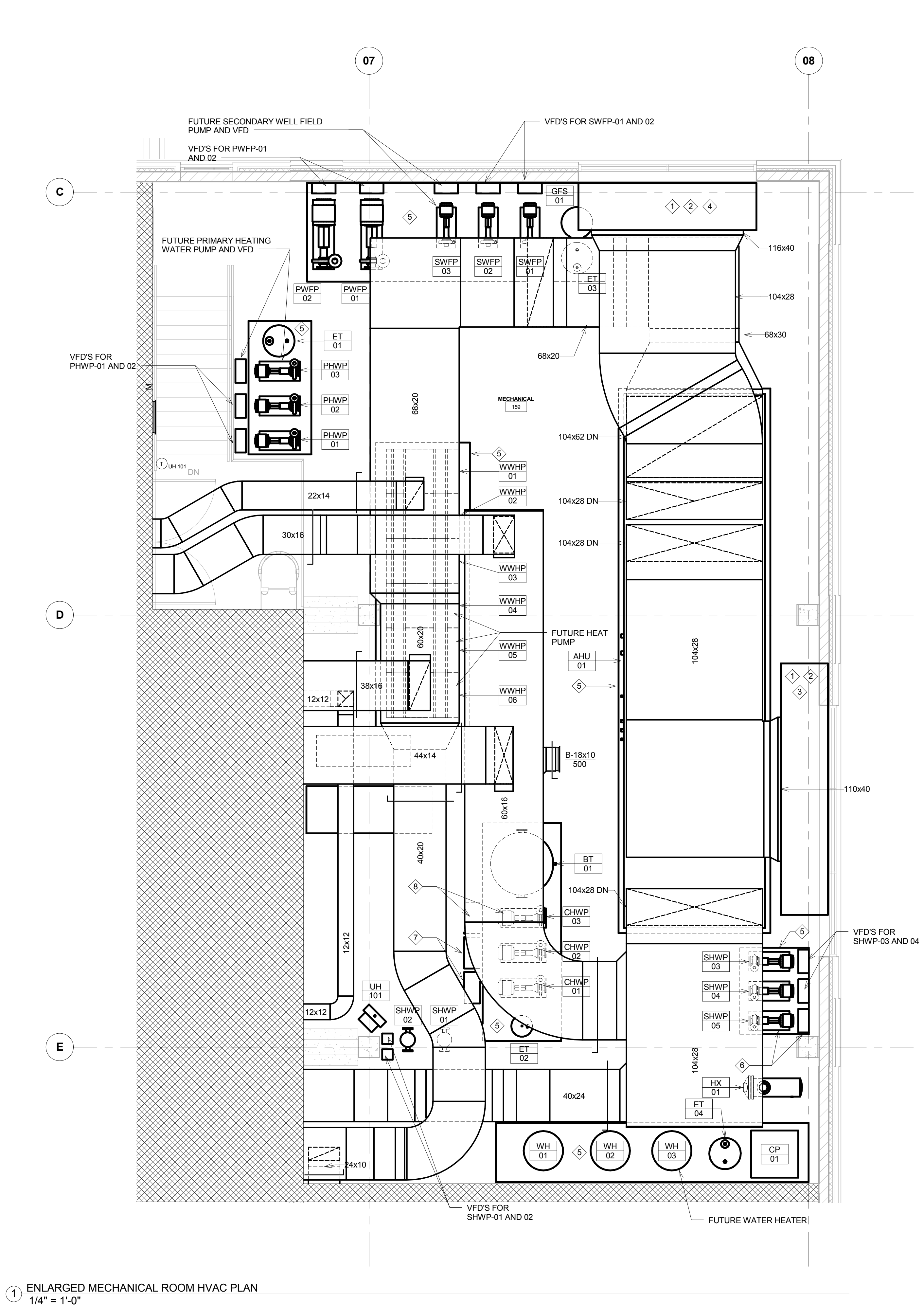


KEY NOTES:

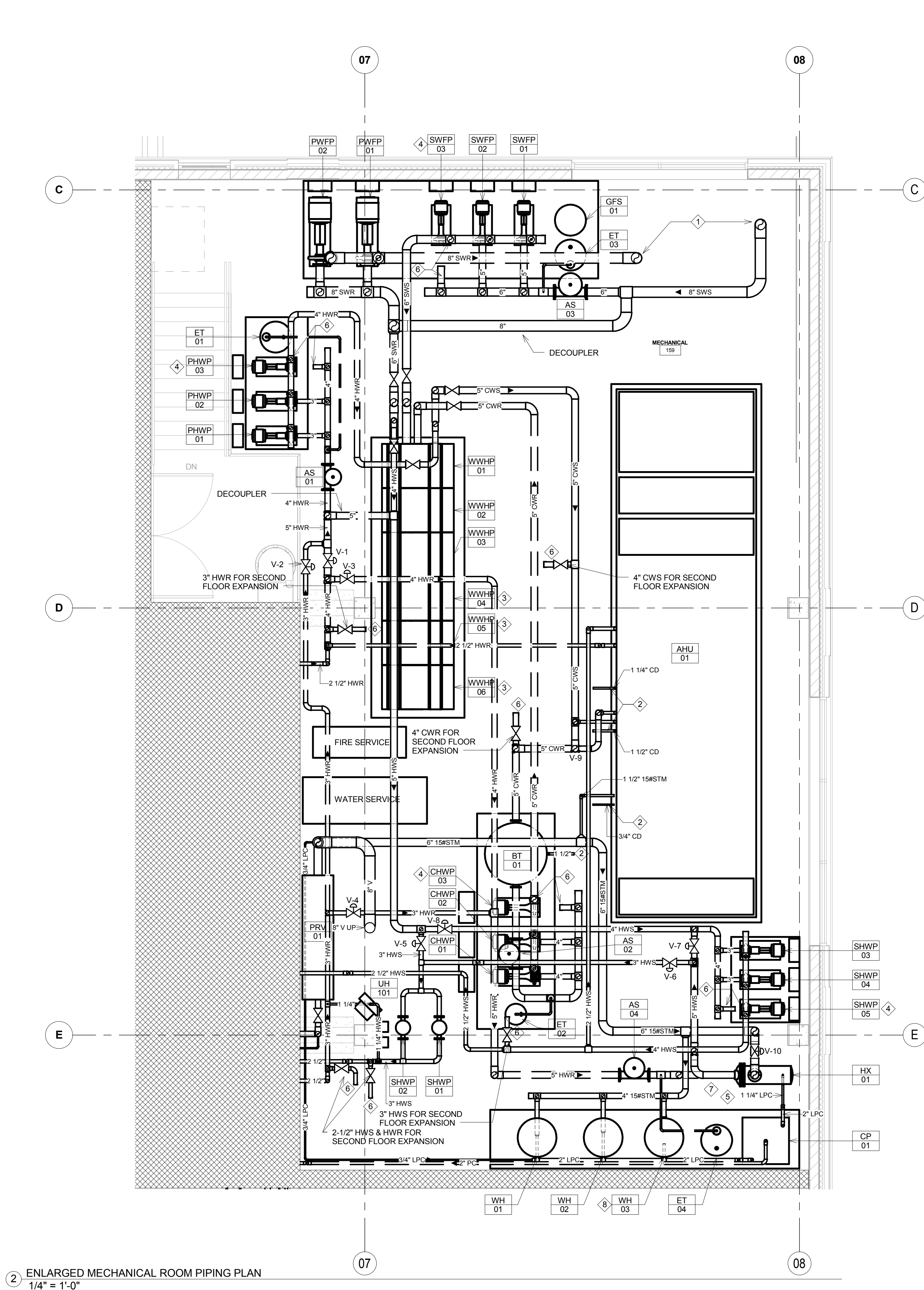
- 1 PROVIDE DOUBLE WALL INSULATED BLANK OFF PANELS FOR UNUSED PORTION OF LOUVER.
- 2 PROVIDE BIRD SCREEN FOR LOUVER.
- 3 4'-6"H x 16'-0"W x 3'D OUTDOOR AIR PLENUM.
- 4 4'-0"H x 11'-4"W x 3'D RELIEF AIR PLENUM.
- 5 PROVIDE 4" HIGH HOUSE KEEPING PAD. SEE ARCHITECTURAL PLANS FOR DETAIL.
- 6 FUTURE SECONDARY HEATING WATER PUMP AND VFD.
- 7 VFD'S FOR CHWP-01 AND 02.
- 8 FUTURE CHILLED WATER PUMP AND VFD.

KEY NOTES:

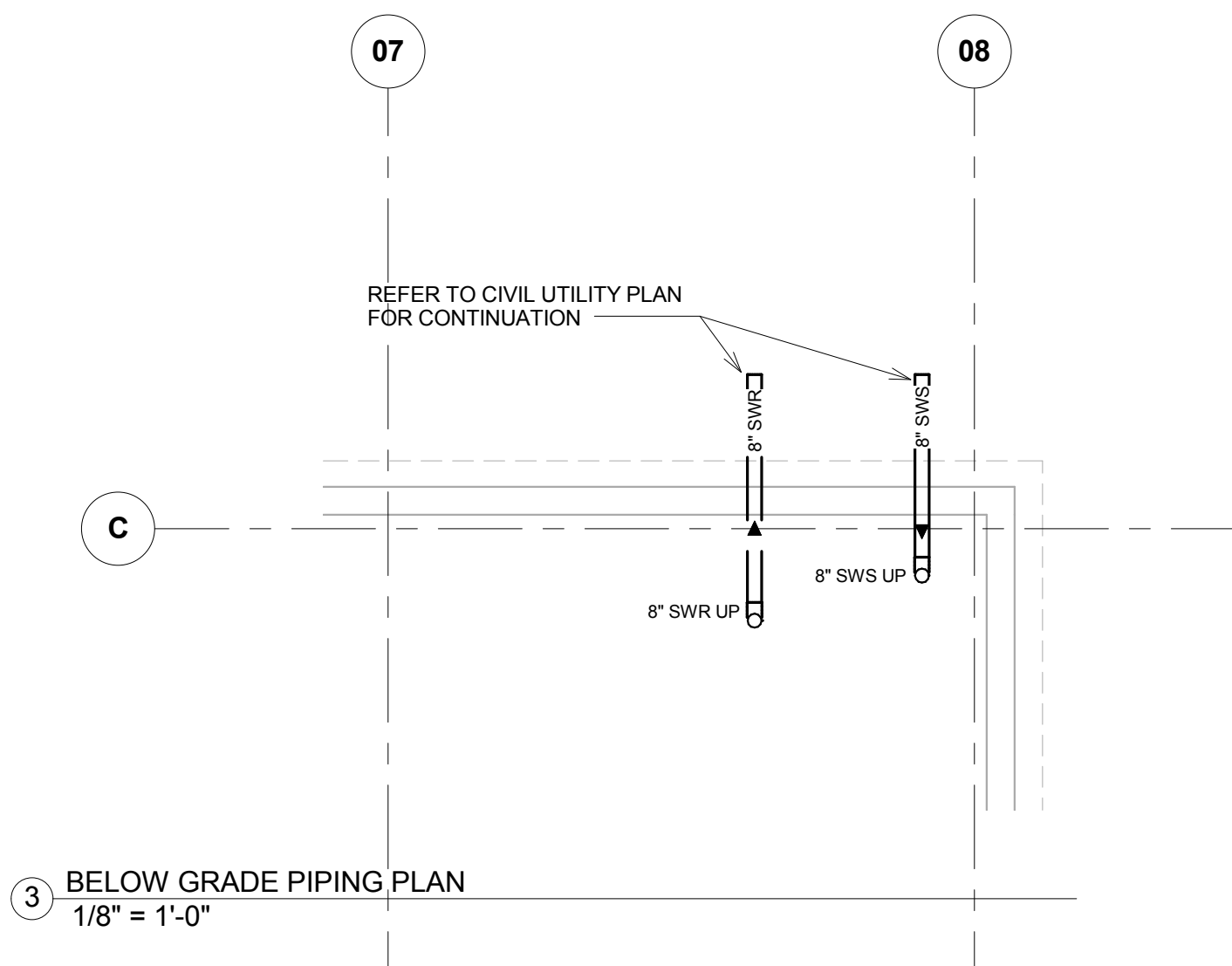
- 1 SWS AND SWP PIPING DOWN. ROUTE BELOW SLAB AND EXTERIOR FOUNDATION WALL FOOTING. SEE CIVIL UTILITY PLAN FOR CONTINUATION.
- 2 ROUTE DRAIN TO NEAREST FLOOR DRAIN.
- 3 FUTURE HEAT PUMP.
- 4 FUTURE PUMP. PROVIDE VALVED AND CAPPED TAKE-OFFS (INLET AND OUTLET) FOR CONNECTION TO FUTURE PUMP.
- 5 FUTURE HEAT EXCHANGER, HX-02, WILL BE MOUNTED BELOW HX-01. EXTEND STEAM LINE PAST HX-01 AND VALVE AND CAP FOR FUTURE CONNECTION TO HX-02.
- 6 VALVE AND CAP FOR FUTURE SECOND FLOOR EXPANSION.
- 7 PROVIDE VALVED AND CAPPED 6" 15#STM, 5" HWS, AND 5" HWR FOR FUTURE HEAT EXCHANGER (HX-02).
- 8 FUTURE WATER HEATER. PROVIDE VALVED AND CAPPED TAKE-OFFS (STEAM AND CONDENSATE) FOR CONNECTION TO FUTURE WATER HEATER.



1 ENLARGED MECHANICAL ROOM HVAC PLAN
1/4" = 1'-0"



2 ENLARGED MECHANICAL ROOM PIPING PLAN
1/4" = 1'-0"



3 BELOW GRADE PIPING PLAN
1/8" = 1'-0"

100% OWNER REVIEW
NOT FOR CONSTRUCTION
12/16/2011



RSP Architects
1220 Marshall Street NE
Minneapolis
Minnesota 55413-1036
612.677.7100
612.677.7499 fax
www.rsparch.com

NOTICE: The designs shown and described herein including all technical drawings, graphics, and media thereof, are proprietary and cannot be copied, duplicated or commercially exploited, in whole or in part, without express written permission of RSP Architects. These are available for limited review and evaluation by clients, consultants, contractors, government agencies, vendors and other personnel only in accordance with this Notice.
© Copyright RSP Architects 2011. All rights reserved.



CONSULTANTS:

Structural
Van Sickle, Allen & Assoc.
2955 Xenium Lane N
Suite 10
Plymouth, MN 55441

Civil
EVS
10250 Valley View Road
Suite 113
Eden Prairie, MN 55344

Landscaping
Damon Farber Assoc.
923 Nicollet Mall
Minneapolis, MN 55402

Fire Protection
Gary Travinski Associates
Engineering
94 Boston Hill
Larkville, PA 18651-3298

MEP
DUNHAM
Dunham Associates, Inc.
60 South Park Street, Suite 1000
Minneapolis, Minnesota 55402-1000
Phone: 612.444.7000
Fax: 612.444.7001
www.dunhaminc.com
mechanical & electrical
consulting engineering
TOWNSHIP/STATE

I hereby certify that this plan, specification or report was prepared by me or under my direct supervision and that I am a duly licensed Engineer under the laws of the State of Minnesota.

Signature
Registration No.
Date 11/17/2011

APPROVED: SERVICE LINE DIRECTOR	DATE	APPROVED: INJECTION CONTROL NURSE	DATE
APPROVED: GEMS COORDINATOR	DATE	APPROVED: PATIENT SAFETY	DATE
APPROVED: PROJECTS SECTION MANAGER	DATE	APPROVED: CHIEF OF POLICE	DATE
APPROVED: DIRECTOR FWS	DATE	APPROVED: SAFETY MANAGER	DATE

DRAWING TITLE ENLARGED MECHANICAL ROOM HVAC & PIPING PLANS	
APPROVED: CHIEF OF STAFF	
APPROVED: MEDICAL CENTER DIRECTOR	

BUILDING NO.	CHECKED BY	THUMB	CAD FILE
DM	BB		
LOCATION 4801 VETERANS DR. SAINT CLOUD, MN	DATE 12/16/2011	SCALE AS NOTED	PROJECT NO. 2012.001.00

