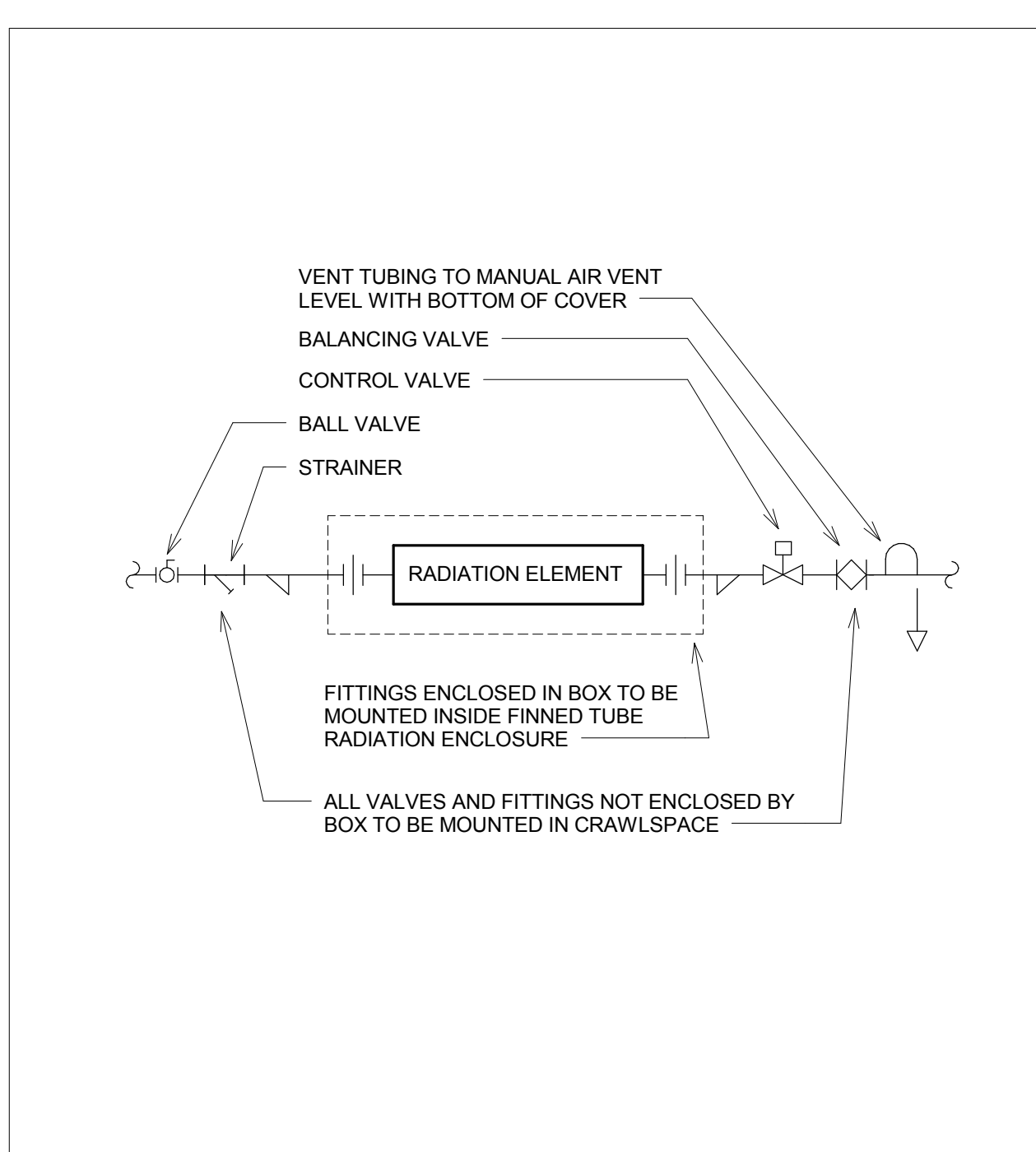
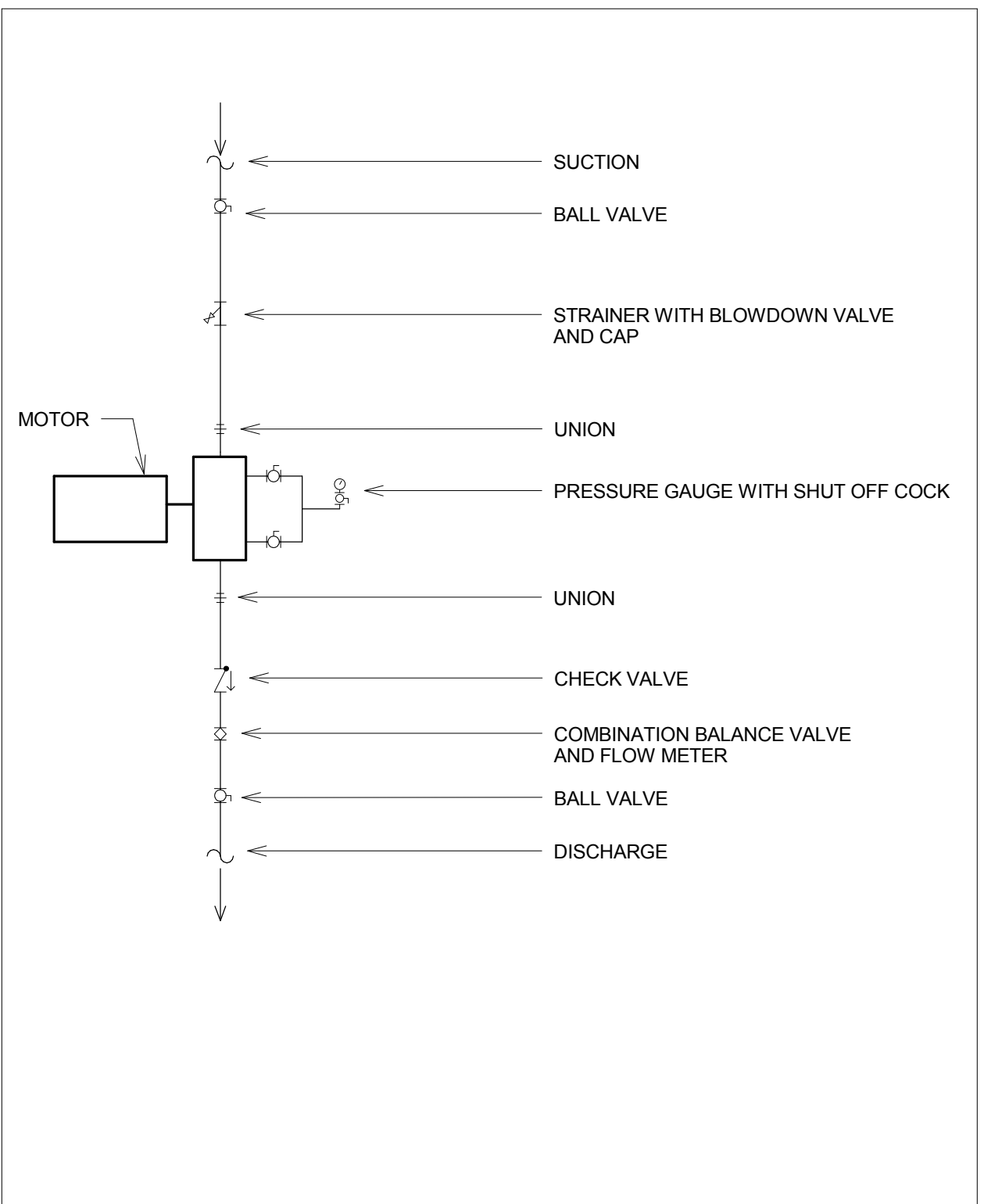


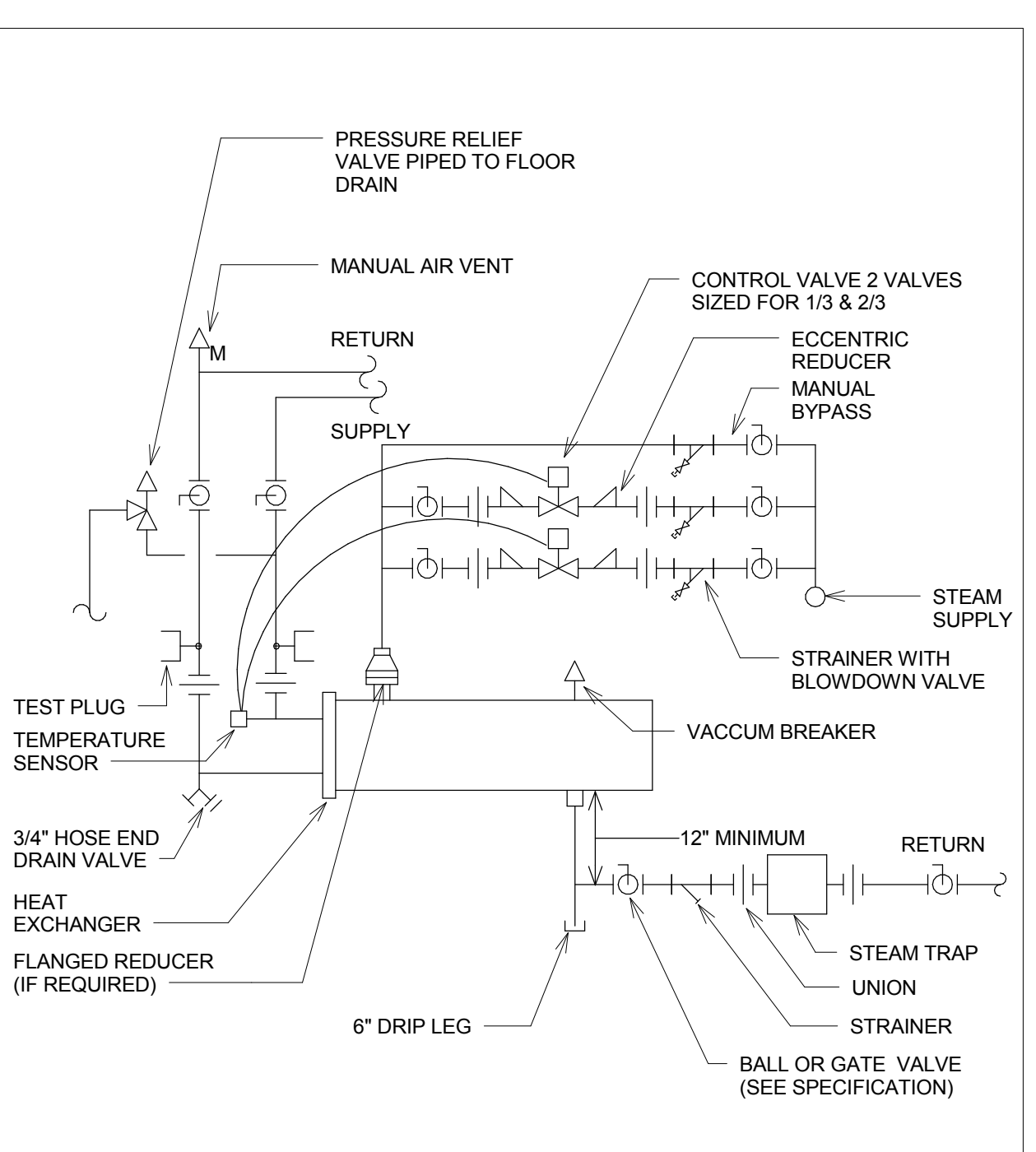
4 SAFETY RELIEF VALVE (SRV) DETAILS
NOT TO SCALE



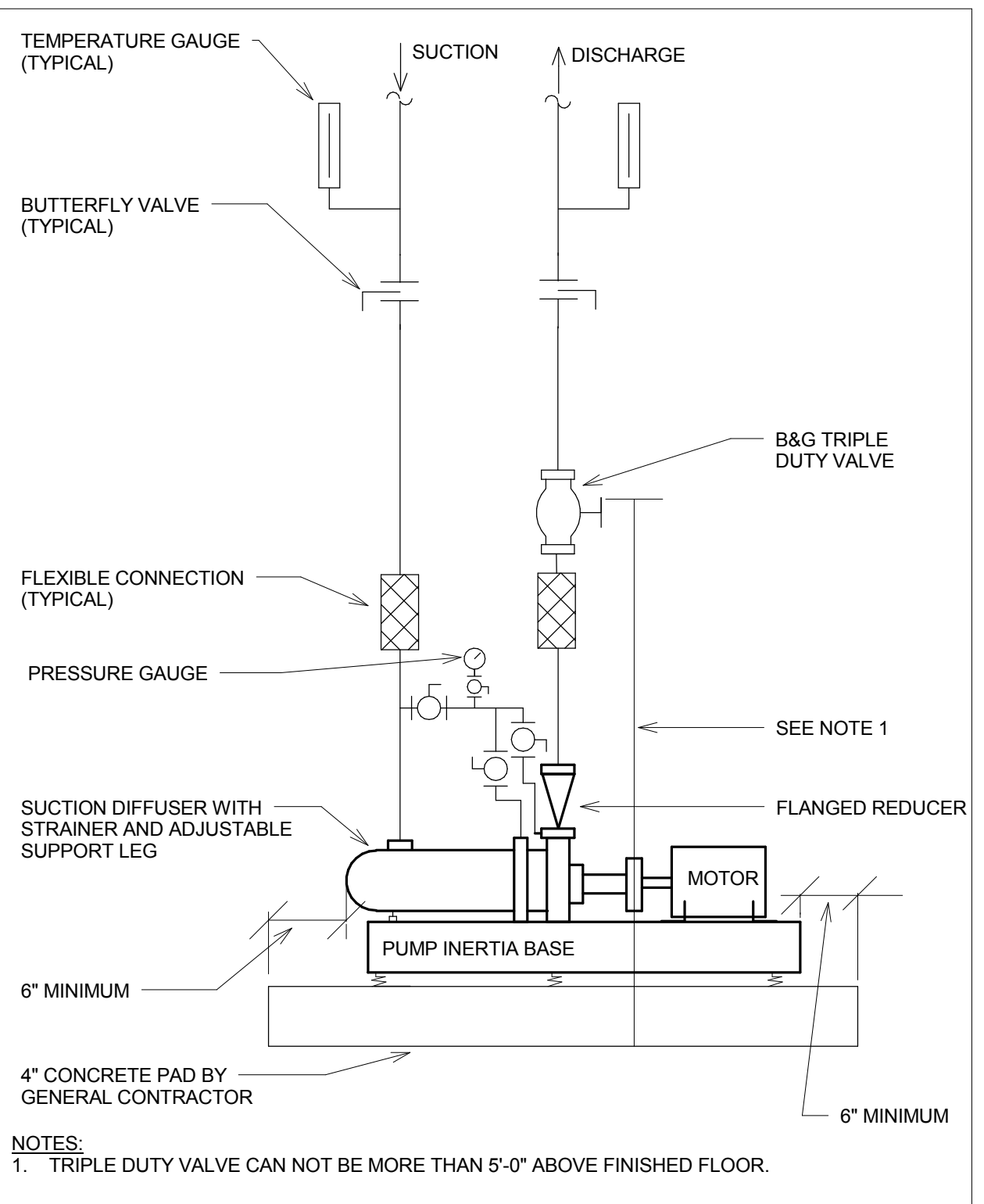
3 HOT WATER RADIATION PIPING DETAIL
NOT TO SCALE



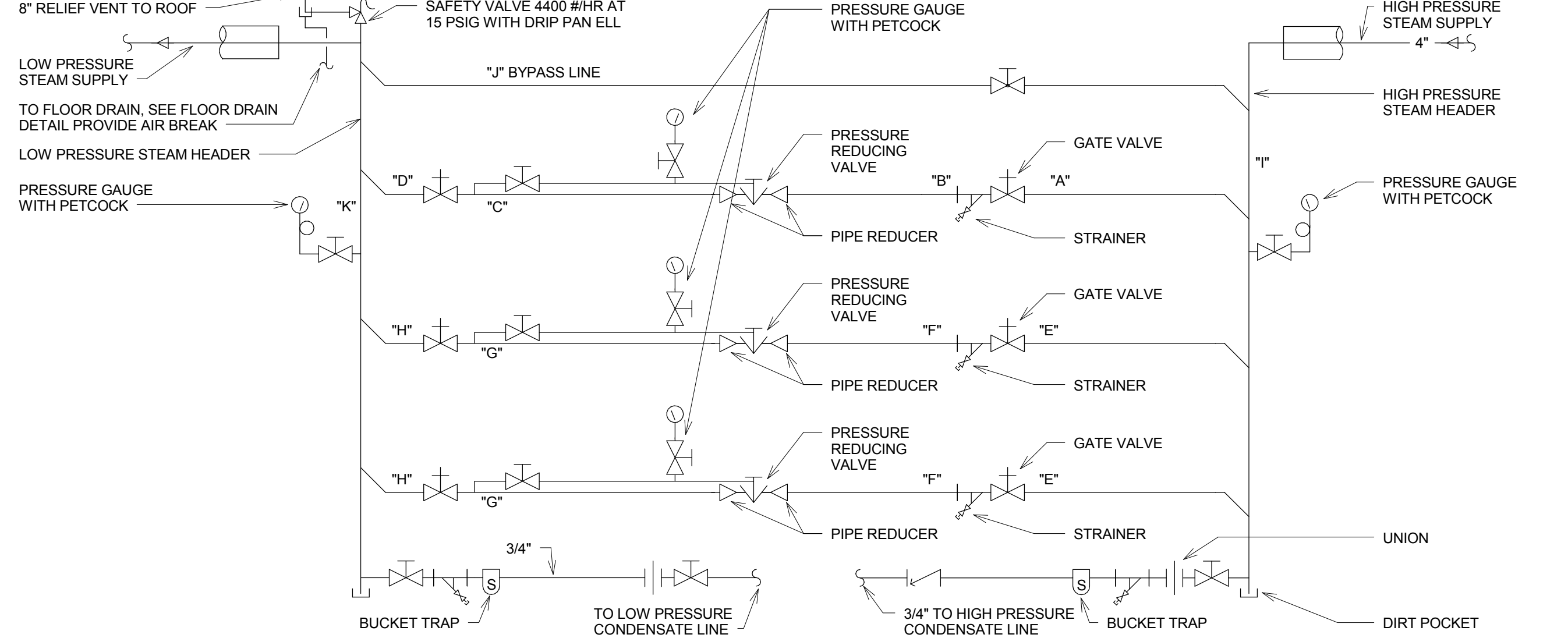
8 INLINE CIRCULATING PUMP DETAIL
NOT TO SCALE



2 STEAM TO HOT WATER CONVERTER PIPING (DUAL VALVE DETAIL)
1/8" = 1'-0"



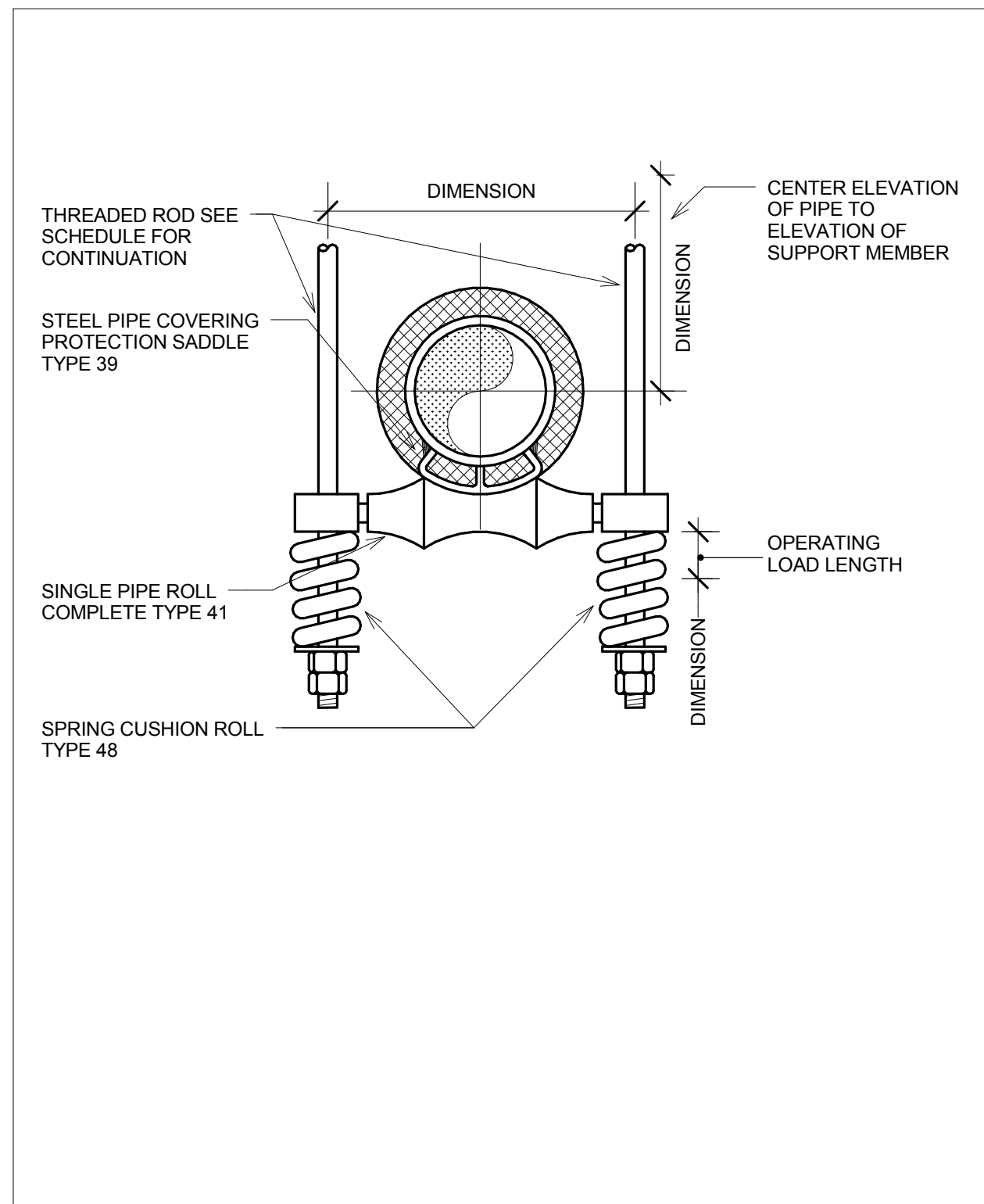
7 END SUCTION PUMP WITH SUCTION DIFFUSER DETAIL
NOT TO SCALE



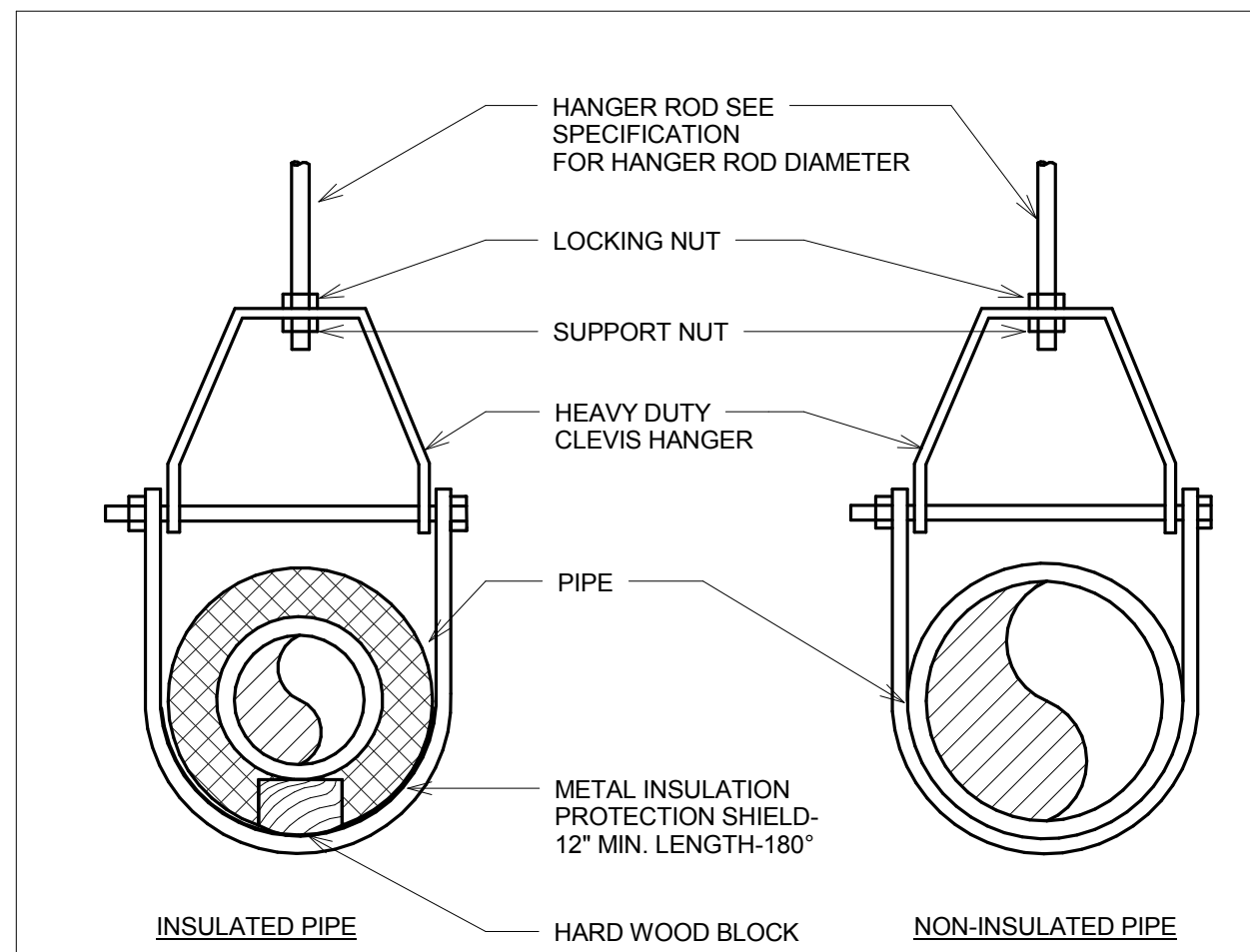
STEAM PRESSURE REDUCING STATION SCHEDULE

STATION	VALVE	INLET PRESS (LBS)	OUTLET PRESS (LBS)	CAPACITY (LBS/HR)	MAX SOUND (DB)	% OF MAX CAP	A SIZE (IN)	B SIZE (IN)	C SIZE (IN)	D SIZE (IN)	E SIZE (IN)	F SIZE (IN)	G SIZE (IN)	H SIZE (IN)	I SIZE (IN)	J SIZE (IN)	K SIZE (IN)
PRV-01 #1	-	100	12	1000	-	90	2	2	20	3	30	3	---	---	---	---	---
PRV-01 #2	-	100	12	1700	-	90	---	---	---	---	---	---	---	---	---	---	---
PRV-01 #3	-	100	12	1700	-	90	---	---	---	---	---	---	---	---	---	---	---

1 STEAM PRESSURE REDUCING STATION DETAIL
NOT TO SCALE

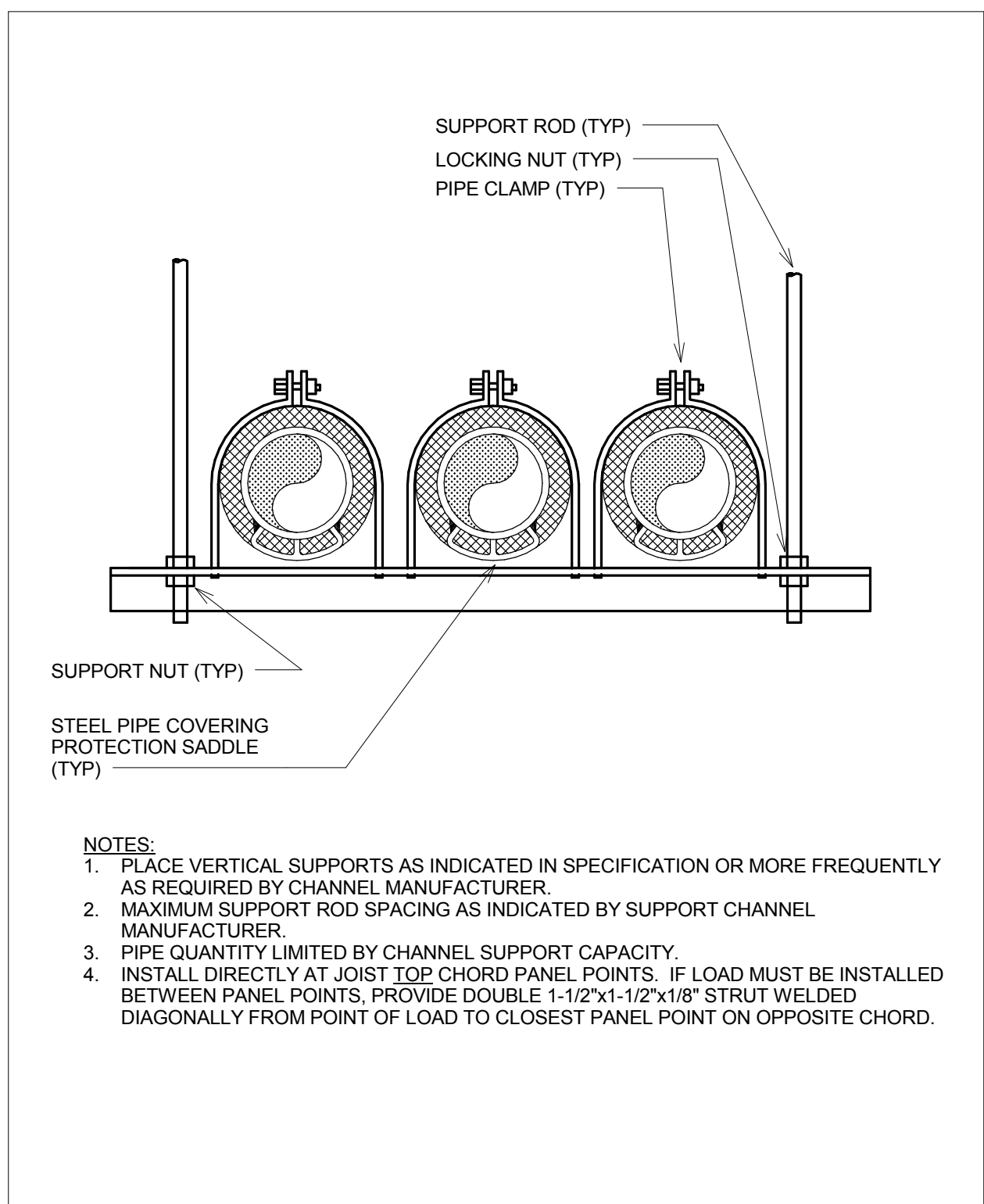


6 TRAPEZE ROLLER WITH SPRINGS DETAIL
NOT TO SCALE

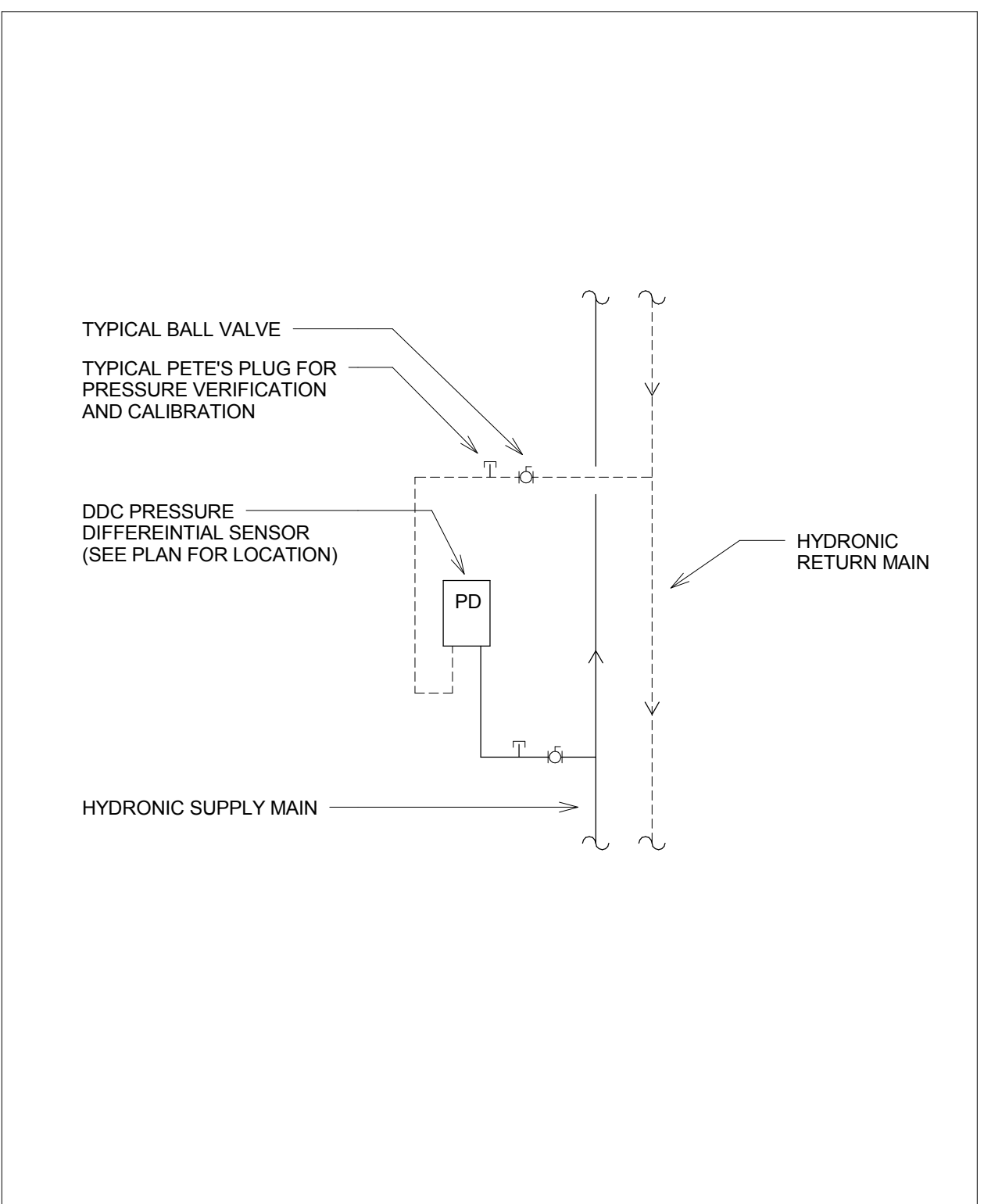


GENERAL NOTES:
1. SUSPEND MECHANICAL HANGER FROM UNISTRUT (OR EQUAL) SYSTEM WITH ADEQUATE CAPACITY TO SUPPORT APPLIED LOADS. INSTALL DIRECTLY AT JOIST TOP OR BOTTOM CHORD PANEL POINTS. IF LOAD MUST BE INSTALLED BETWEEN PANEL POINTS, SEE STRUCTURAL DETAIL.
2. THIS DETAIL APPLIES TO ALL PIPES & SIZES UNLESS SPECIFICALLY NOTED OTHERWISE.
3. FASTEN HANGER RODS TO TOP CHORDS OF BAR JOISTS OR OTHER STRUCTURAL BEAMS. DO NOT FASTEN TO ROOF DECK OR JOIST BRIDGING. DO NOT USE FOR STEAM PIPING SYSTEM.

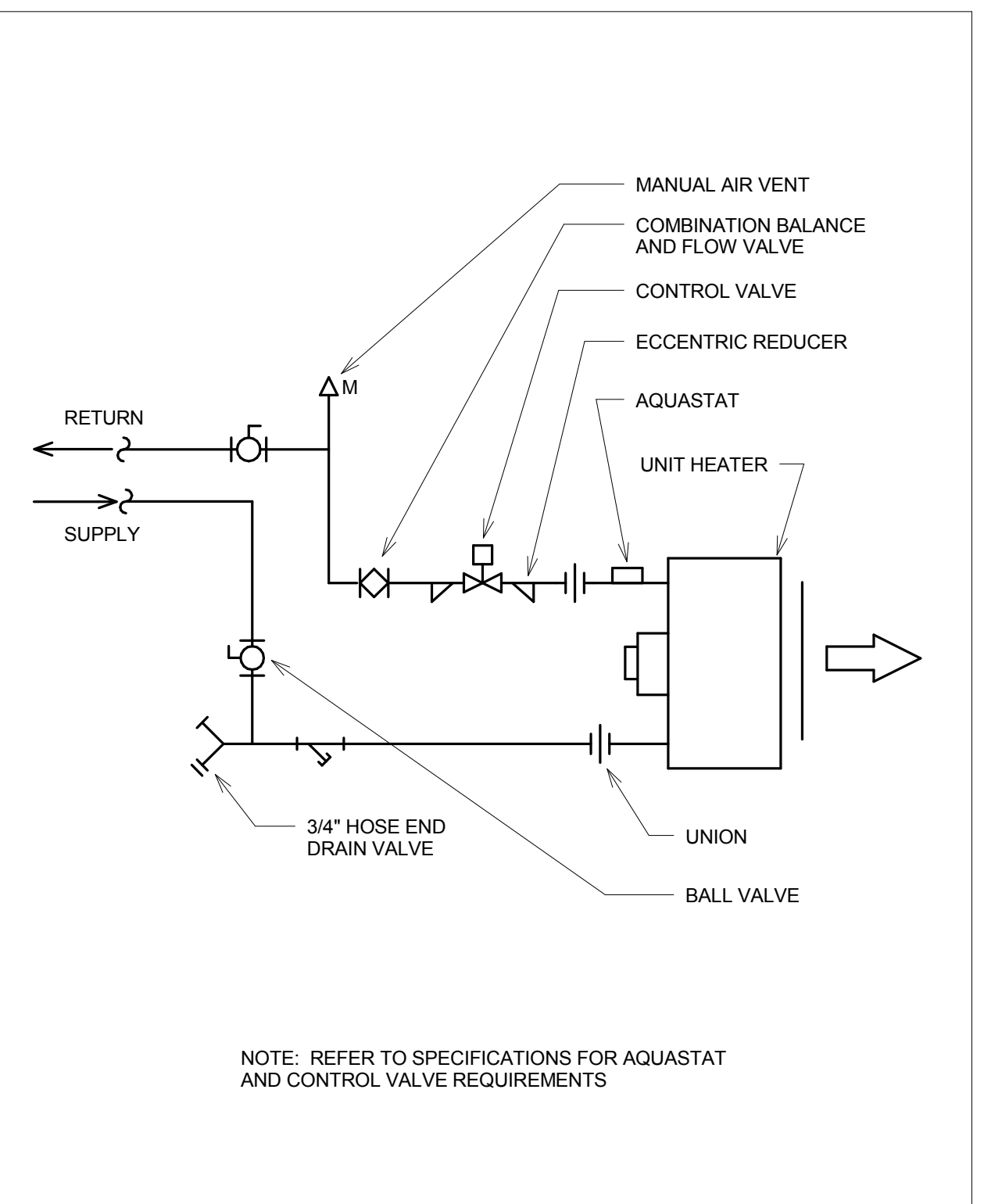
5 CLEVIS HANGER DETAIL
NOT TO SCALE



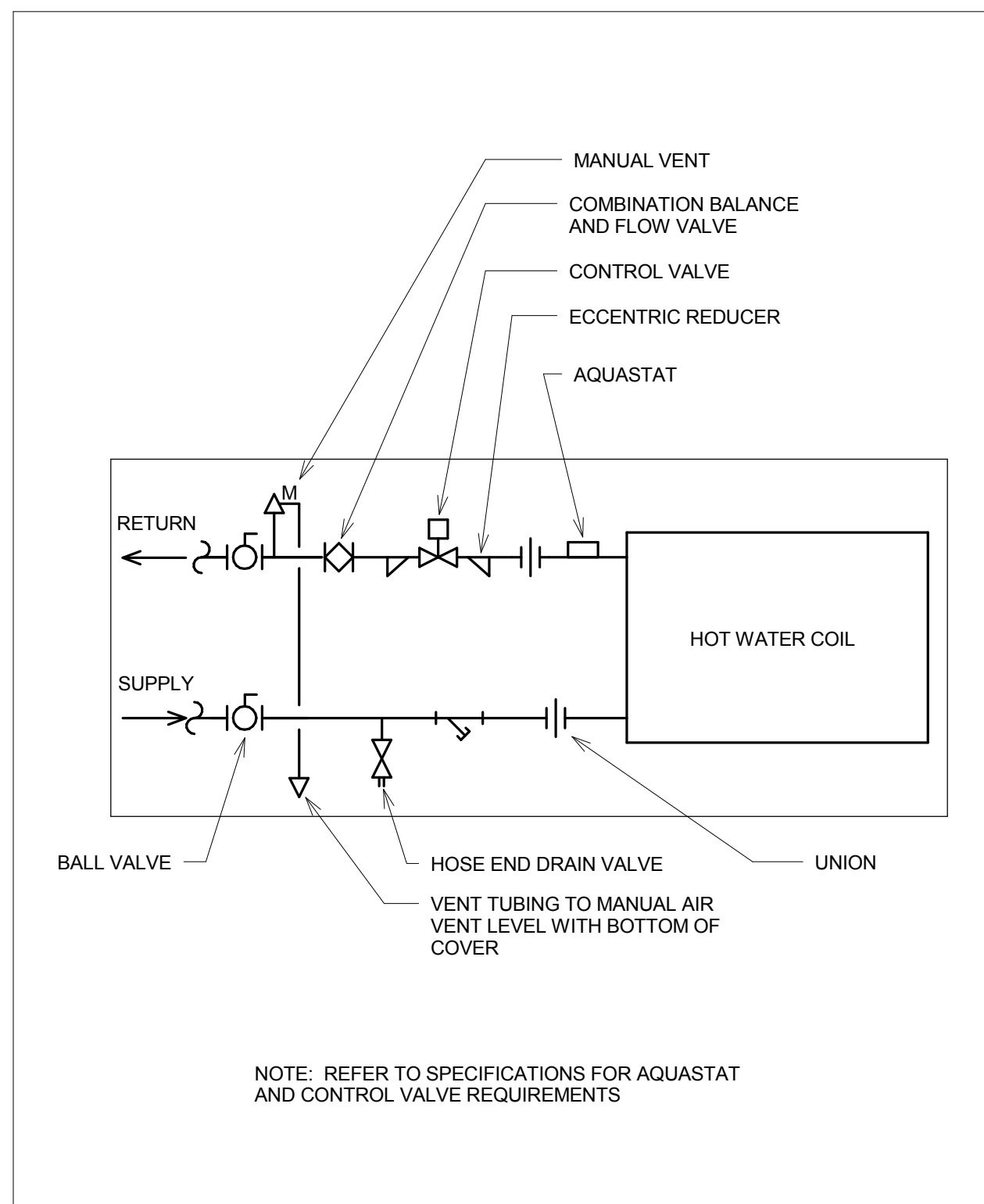
13 TRAPEZE HANGER DETAIL
NOT TO SCALE



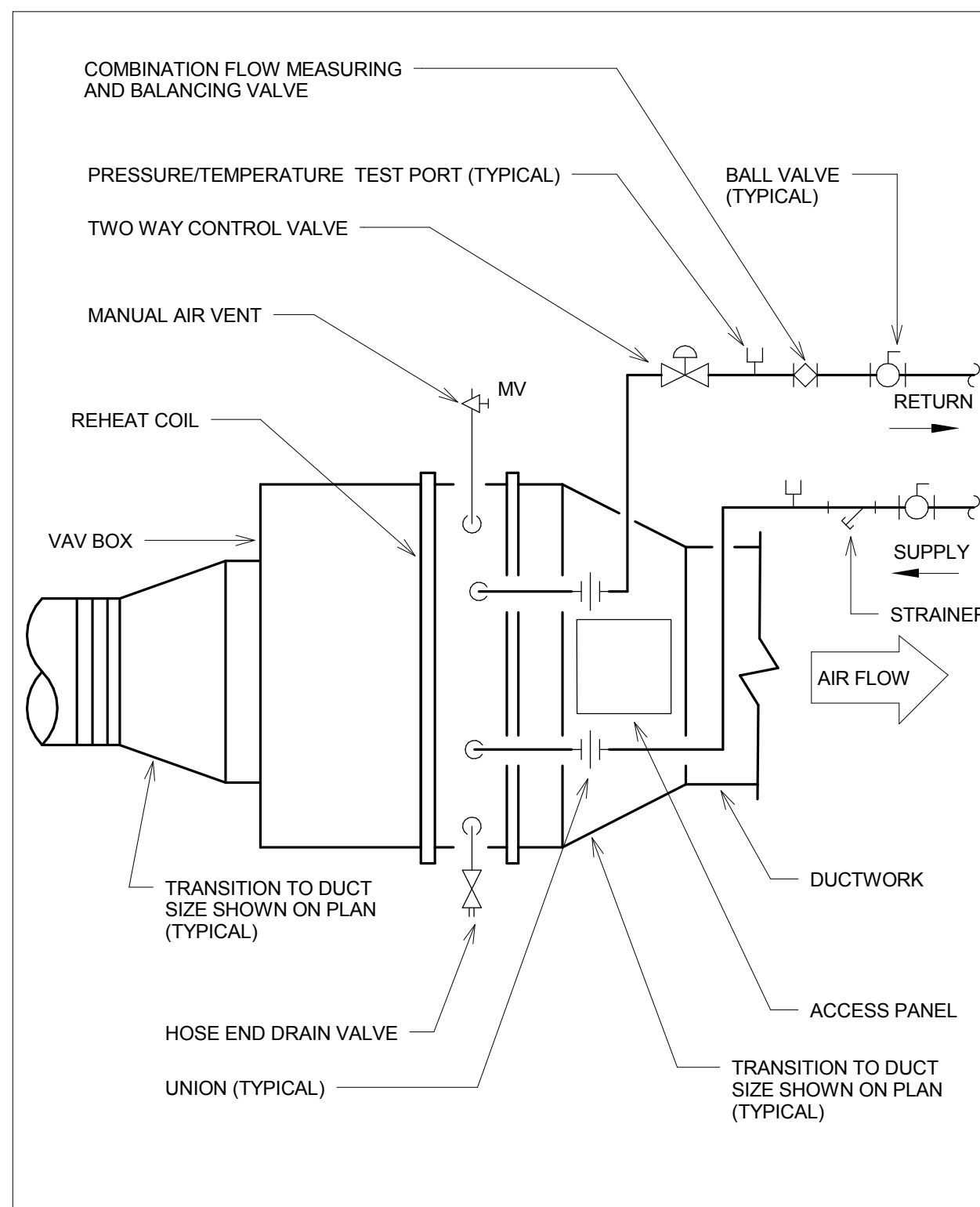
11 PUMPING PRESSURE DIFFERENTIAL SENSOR
NOT TO SCALE



12 HOT WATER UNIT HEATER PIPING DETAIL (2-WAY VALVE)
NOT TO SCALE



10 HOT WATER CABINET UNIT HEATER PIPING DETAIL (2-WAY VALVE)
NOT TO SCALE



9 TYPICAL VAV BOX WITH HOT WATER REHEAT COIL DETAIL
NOT TO SCALE

100% OWNER REVIEW
NOT FOR CONSTRUCTION
12/16/2011



RSP Architects
1220 Marshall Street NE
Minneapolis
Minnesota 55413-1036
612.677.7100
612.677.7499 fax
www.rsparch.com

NOTICE: The designs shown and described herein including all technical drawings, graphics, and models thereof, are proprietary and cannot be copied, duplicated or commercially exploited, in whole or in part, without express written permission of RSP Architects. These are available for limited review and evaluation by clients, consultants, contractors, government agencies, vendors and office personnel only in accordance with this Notice.
© Copyright RSP Architects 2011. All rights reserved.



CONSULTANTS:

Structural
Van Sickle, Allen & Assoc.
2955 Xenium Lane N
Suite 10
Plymouth, MN 55441
Civil
EVS
10250 Valley View Road
Suite 113
Eden Prairie, MN 55344

Landscape
Damon Farber Assoc.
923 Nicollet Mall
Minneapolis, MN 55402
Fire Protection
Gary Travinski Associates
Engineering
94 Boston Hill
Larksville, PA 18851-3298

MEP
DUNHAM
Associates, Inc.
40 South Park Street, Suite 1000
Minneapolis, Minnesota 55402-1000
Phone: 612.448.7000
Fax: 612.448.7000
www.dunhaminc.com
mechanical & electrical
consulting engineering
TOWNHILL/PAULSON

I hereby certify that this plan, specification or report was prepared by me or under my direct supervision and that I am a duly licensed Engineer under the laws of the State of Minnesota.
Signature
Registration No.
Date 11/17/2011

APPROVED: SERVICE LINE DIRECTOR	DATE	APPROVED: INJECTION CONTROL NURSE	DATE
APPROVED: GEMS COORDINATOR	DATE	APPROVED: PATIENT SAFETY	DATE
APPROVED: PROJECTS SECTION MANAGER	DATE	APPROVED: CHIEF OF POLICE	DATE
APPROVED: DIRECTOR TWO	DATE	APPROVED: SAFETY MANAGER	DATE

PROJECT TITLE LONG TERM INTERMEDIATE PSYCHIATRIC UNIT	DATE 12/16/2011
PROJECT NO. 2012.001.00	AS NOTED
PROJECT FILE M400	DATE 12/16/2011
PROJECT FILE M400	DATE 12/16/2011

