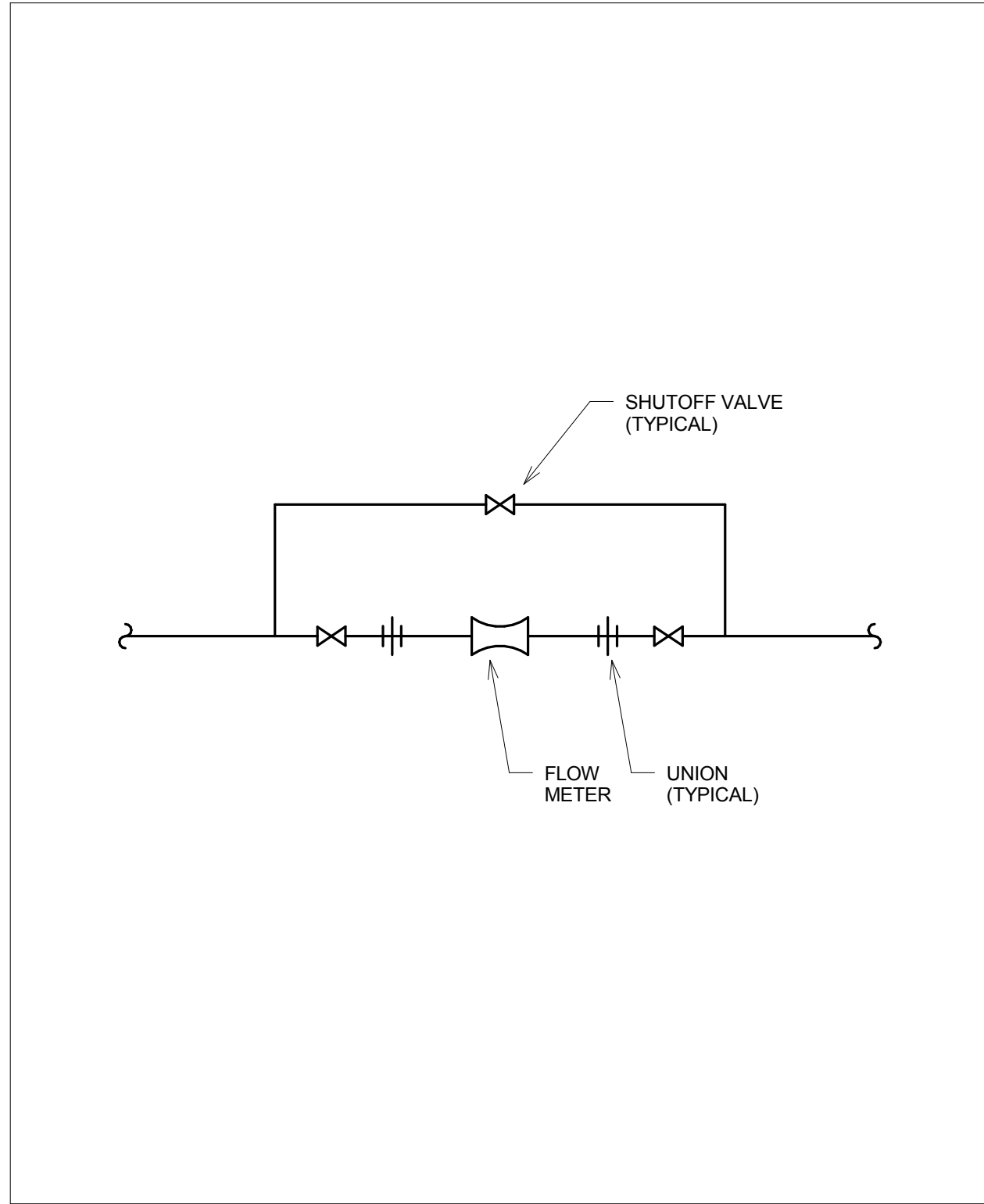
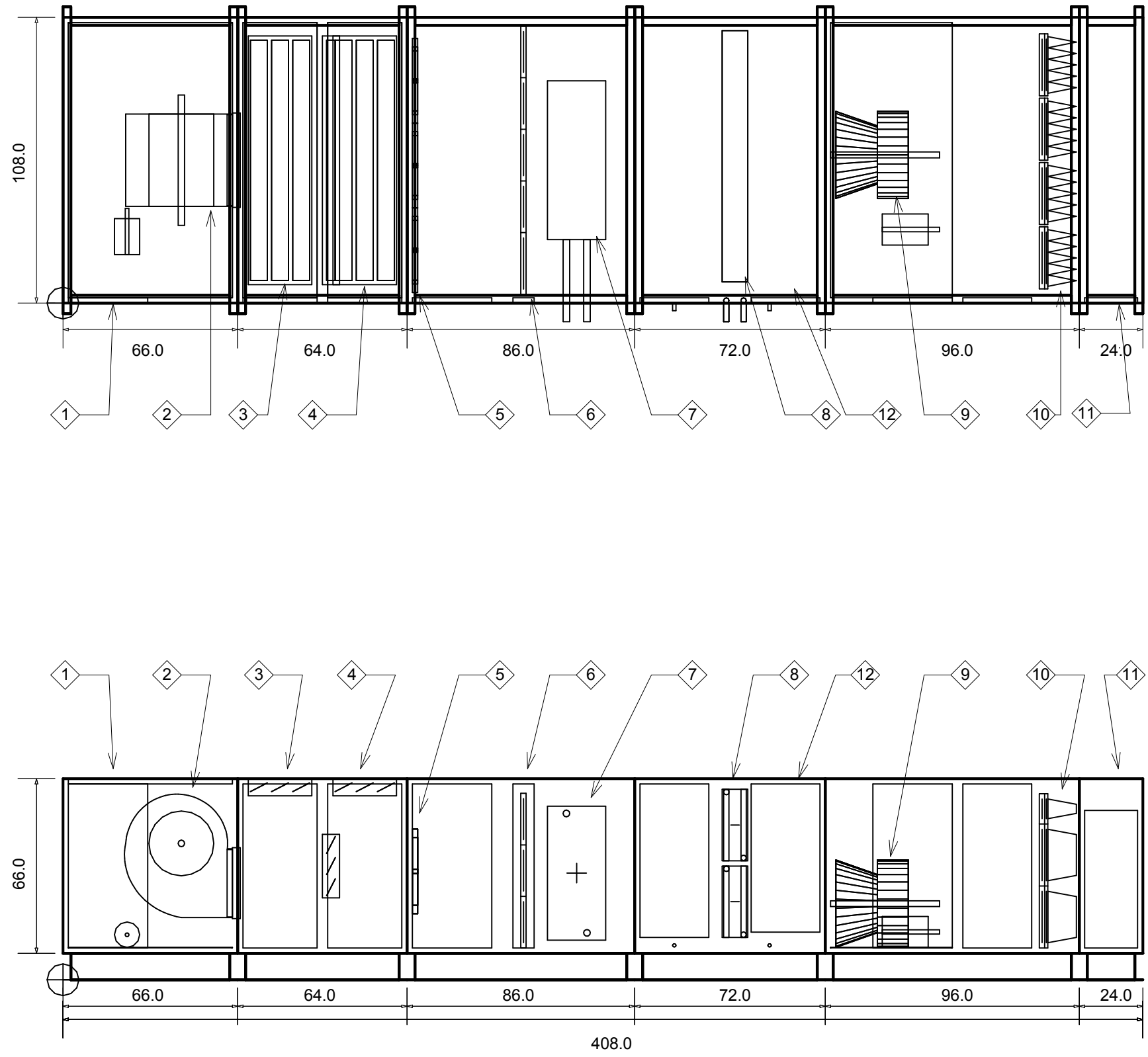


3 AIR HANDLING UNIT CONDENSATE TRAP DETAIL
NOT TO SCALE



2 FLOW METER DETAIL
NOT TO SCALE



1 AHU-01 PLAN & ELEVATION DETAILS
NOT TO SCALE

KEY NOTES:

- 1 RETURN AIR CONNECTION
- 2 RETURN FAN
- 3 RELIEF AIR DAMPER AND CONNECTION
- 4 OUTDOOR AIR DAMPER AND CONNECTION
- 5 BLENDER
- 6 FILTER
- 7 HEATING COIL
- 8 COOLING COIL
- 9 SUPPLY FAN
- 10 FILTER
- 11 SUPPLY AIR CONNECTION
- 12 HUMIDIFIER

NOTES:
1. BASE IS 10.0 INCHES DEEP.

100% OWNER REVIEW
NOT FOR CONSTRUCTION
12/16/2011



RSP Architects
1220 Marshall Street NE
Minneapolis
Minnesota 55413-1036
612.677.7100
612.677.7499 fax
www.rsparch.com

NOTICE: The designs shown and described herein including all technical drawings, graphics, and models thereof, are proprietary and cannot be copied, duplicated or commercially exploited, in whole or in part, without express written permission of RSP Architects. These are available for limited review and evaluation by clients, consultants, contractors, government agencies, vendors and office personnel only in accordance with this Notice.

© Copyright RSP Architects 2011. All rights reserved.



CONSULTANTS:

Structural
Van Sickle, Allen & Assoc.
2955 Xenium Lane N
Suite 10
Plymouth, MN 55441

Civil
EVS
10250 Valley View Road
Suite 113
Eden Prairie, MN 55344

Landscape
Damon Farber Assoc.
923 Nicollet Mall
Minneapolis, MN 55402

Fire Protection
Gary Trivinski Associates
Engineering
Suite 113
Larksville, PA 18651-3298



I hereby certify that this plan, specification or report was prepared by me or under my direct supervision and that I am a duly licensed Engineer under the laws of the State of Minnesota.

Signature

Registration No.

Date 11/17/2011

APPROVED: SERVICE LINE DIRECTOR	DATE	APPROVED: INFECTION CONTROL NURSE	DATE
APPROVED: DEVS COORDINATOR	DATE	APPROVED: PATIENT SAFETY	DATE
APPROVED: PROJECTS SECTION MANAGER	DATE	APPROVED: CHIEF OF POLICE	DATE
APPROVED: DIRECTOR FWS	DATE	APPROVED: SAFETY MANAGER	DATE

MECHANICAL DETAILS	APPROVED: CHIEF OF STAFF	DATE
APPROVED: MEDICAL CENTER DIRECTOR	DATE	

PROJECT TITLE LONG TERM / INTERMEDIATE PSYCHIATRIC UNIT	BUILDING No	DM	BB	DATE 12/16/2011
PROJECT NO. 2032.001.00	LOCATION 4801 VETERANS DR. SAINT CLOUD, MN	DATE 11/17/2011	SCALE AS NOTED	FILE M402

