



R1-5b  
36" x 36"

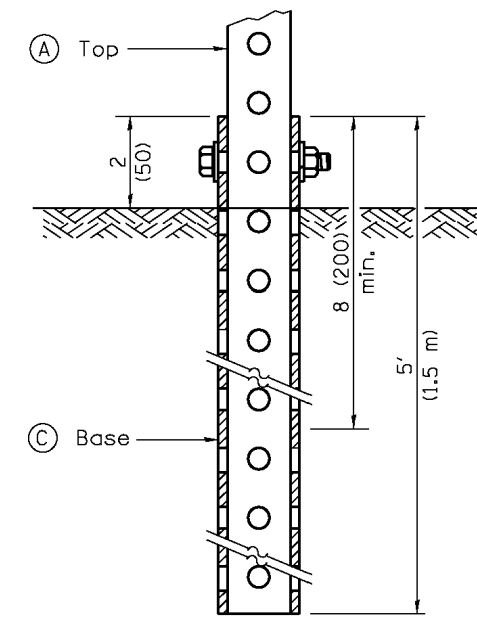
NOTE: SEE DETAIL 10 ON SHEET C3.3 AND 3 ON SHEET C3.4 FOR MOUNTING

1  
C3.4  
PEDESTRIAN CROSSWALK  
SIGN DETAIL (R1-5B - 36" x 36")  
SCALE: NO SCALE

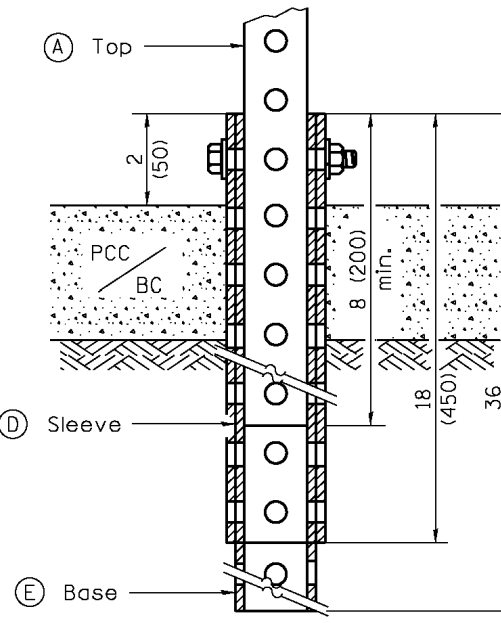


NOTE: SEE DETAIL 10 ON SHEET C3.3 AND 3 ON SHEET C3.4 FOR MOUNTING

2  
C3.4  
PEDESTRIAN CROSSWALK ADVANCED  
WARNING DETAIL (W11-2 - 30" x 30")  
SCALE: NO SCALE



GROUND MOUNT DETAIL



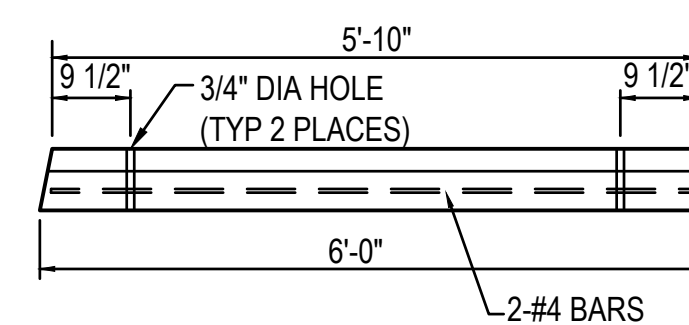
PAVEMENT MOUNT DETAIL

NOTES:

ALL SIGN POSTS AND COMPONENTS  
SHALL HAVE A BLACK POWDER COAT  
FINISH

①	2 x 2 x var. (51 x 51 var.)
②	1 3/4 x 1 3/4 x 12 (44 x 44 x 300)
③	2 1/4 x 2 1/4 x 60 (57 x 57 x 1500)
④	2 1/2 x 2 1/2 x 18 (64 x 64 x 450)
⑤	2 1/4 x 2 1/4 x 36 (57 x 57 x 900)

3  
C3.4  
TELESCOPING STEEL SIGN SUPPORT  
SCALE: NO SCALE

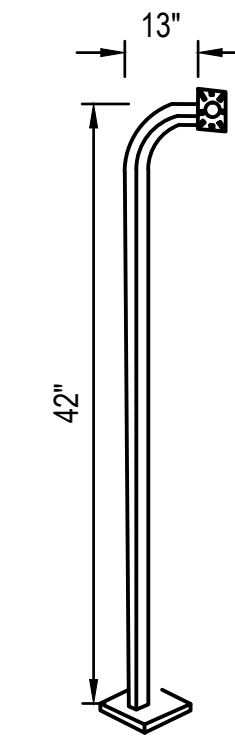


NOTE:

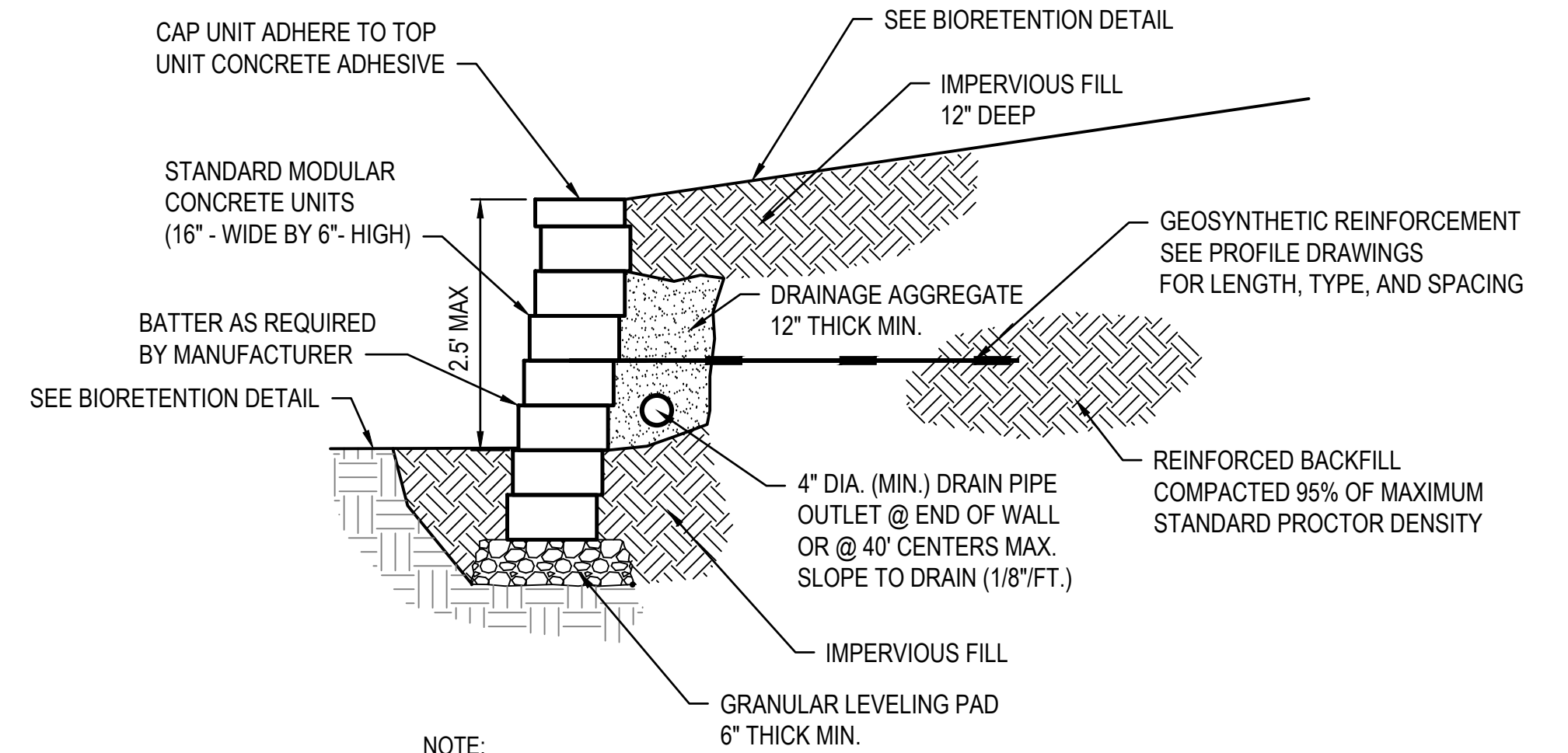
1. PARKING BLOCKS SHALL BE MADE OF CONCRETE
2. PARKING BLOCKS TO BE ANCHORED WITH 5/8" x 24" IRON PINS (2 EACH) DRILLED INTO THE PAVEMENT & FIT SNUG AS TO NOT RACK WHEN SHOVED.

6  
C3.4  
CONCRETE PARKING BLOCK DETAIL  
SCALE: NO SCALE

42" TALL PEDESTAL THAT  
ACCOMMODATES ADA  
COMPLIANT SPECIFICATIONS



7  
C3.4  
KEYCARD PEDESTAL  
SCALE: NO SCALE



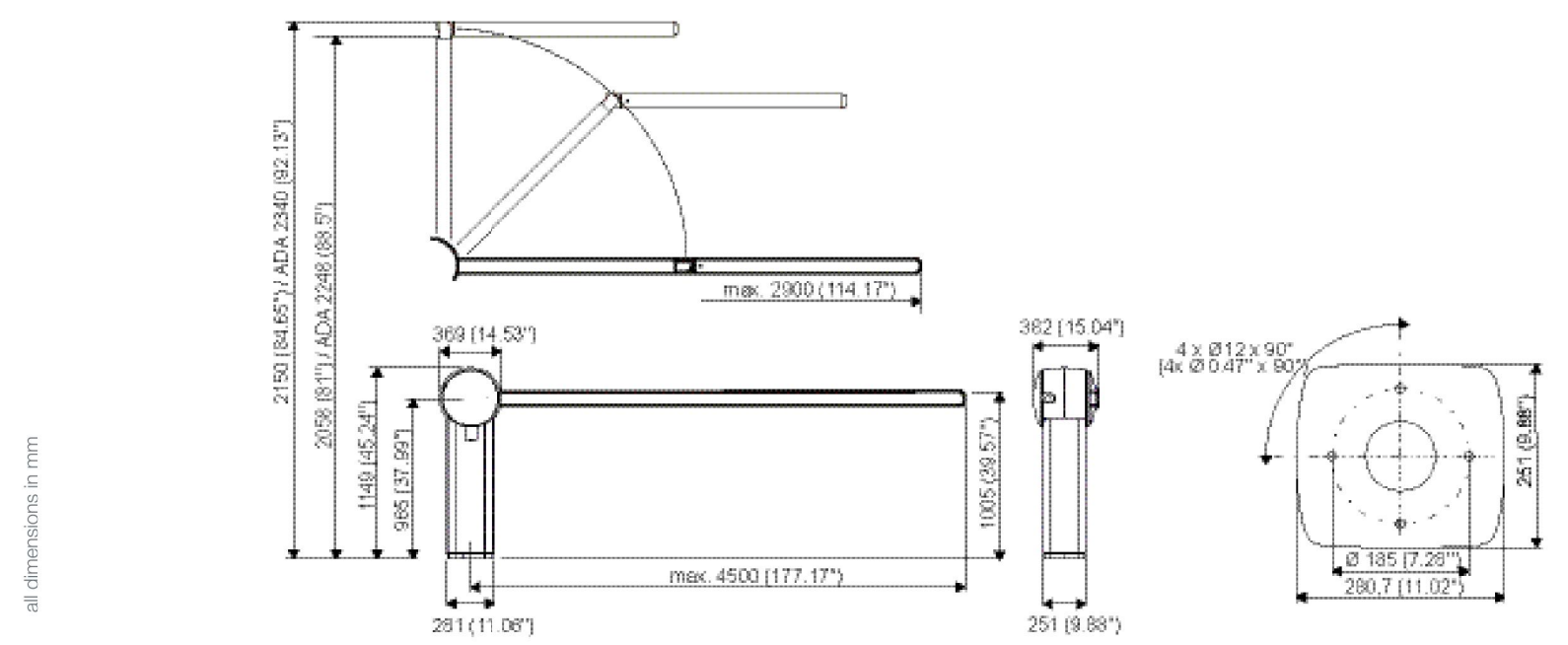
NOTE:

USE GEOGRID AS REQUIRED BY THE MANUFACTURER'S RECOMMENDATIONS.

COLOR OF SEGMENTAL BLOCK WALL SHALL BE SELECTED BY OWNER FROM  
MANUFACTURER'S FULL PALLET OF COLOR OPTIONS.

PROPOSED WALLS NOT TO EXCEED 2.5 FEET IN HEIGHT MEASURED FROM THE  
FINISHED GRADE LINE TO TOP OF WALL. SEE GRADING PLAN FOR TOP AND BOTTOM OF  
WALL ELEVATION AND LOCATIONS.

4  
C3.4  
SEGMENTAL BLOCK WALL  
SCALE: NO SCALE



Features

- Housing made from high-impact resistant plastic; support stand manufactured from eloxed aluminum
- Integrated drive gear motor with frequency converter control and slipping clutch
- Self-locking drive (stops motion in case of power failure)
- Barrier breakage detector
- Variable opening times, configurable in accordance with barrier arm length
- Barrier arms made from GRP
- Barrier arm lengths up to 4,5 m (14,76 ft)
- Barrier arms are easy to mount
- Versions for left-hand and right-hand traffic
- Electronic calculations based on Military Standard (MIL-HDBK-217F)
- 7-year maintenance free service with 600 cycles per day (under standard environmental conditions)
- 2 million cycles MTBM (Mean Time Between Maintenance)

Options

- Standard: Color Traffic Yellow RAL 1023/translucent; non-illuminated for lengths up to 4,5 m (14,76 ft)
- Multi-color version: Color white/translucent, with interior RGB LEDs for optional illumination of barrier arm in red, yellow and green to indicate closed, opening, and open states, respectively; lengths up to 4,5 m (14,76 ft)
- Jointed barrier arm: Overhead clearance: 2,07 m (6,8 ft) or 2,25 m (7,38 ft); Lengths 2,5 m (8,2 ft) or 2,9 m (9,5 ft)
- Multi-color jointed barrier arm with interior RGB LEDs: Overhead clearance: 2,07 m (6,8 ft) or 2,25 m (7,38 ft); Lengths 2,5 m (8,2 ft)

Functional modules

- Up to 2 double loop detectors for detection of vehicles and passage direction
- Bi-directional red warning light to indicate moving barrier arm
- Buzzer for acoustic indication of barrier motion
- Crash guard, made from stainless steel
- Interface for illumination options and optional loop detectors
- Interface for up to 16 additional I/Os
- Barrier lock for Webkey system
- Lock for installation in locking systems
- White contour stripe
- Backlight for contour stripe
- Barrier arm support (with or without magnetic lock)

Standard Version

- Parking barrier with mounting plate, main body manufactured from aluminum, drive motor and washer for barrier arm installation
- Electronic control assembly with data connection to Power, Gate, Lifts Gate or Column, Gate parking column
- Yellow contour stripe
- Triangular key for opening the housing

Technical Specifications	
Dimensions	382 mm x 1149 mm x 369 mm / 15.04" x 45.24" x 14.53" (w x h x d)
Weight	48 kg (105,82 lbs) (without barrier arm)
Operating voltage	100-240 V $\pm$ 10% / 50-60 Hz / Maximum current 1,8 A at 240 V or 4,8 A at 100 V With heater for 220-240 V $\pm$ 10% / 50-60 Hz / 3,8 A maximum current With heater for 100-127 V $\pm$ 10% / 50-60 Hz / 8,1 A maximum current
Temperature range	Standard: -20 °C to +50 °C (-4 °F to +122 °F) Cold Kit (heater): -40 °C to +50 °C (-40 °F to +122 °F) Hot Kit: -20 °C to +55 °C (-4 °F to +131 °F)
Support Stand - Color	Light Gray RAL 7035 (Anodized Aluminum)
Top Section - Color	Dusty Gray RAL 7043 (Plastic)
Base Section - Color	Traffic Gray RAL 7043 (Die-Cast Aluminum)
Contour Stripes - Color	Traffic Yellow RAL 1023
Degree of protection	IP44
System Requirements	Parking Logic V 05.00.04 or higher
Declarations / Certifications	CE, cNRTLus, GOST

SKIDATA AG • Unterebergstraße 40 • A-5063 Grödig (Salzburg) | +43 (0)46 888 0 • | +43 (0)46 888 7 • | info@skidata.com | www.skidata.com • Version 1.74 • 10.01.2018  
© 2018 SKIDATA AG. All rights reserved. The content provided herein is subject to change and possible editorial errors. Country-specific versions may vary. SKIDATA® is a registered trademark of SKIDATA AG in the USA, the European Union and other countries. Terms and conditions of the authorized SKIDATA distributor apply. The operator is fully responsible for compliance with any legal provisions applicable to the operation of the products.

8  
C3.4  
SKIDATA BARRIER ARM  
SCALE: NO SCALE

CONSULTANTS:

ARCHITECT:  
SPUR DESIGN  
320 NW 10TH ST., SUITE A  
OKLAHOMA CITY, OK 73103  
PHONE: 405.842.6100  
CERTIFICATE OF AUTHORITY:  
MO #2012034754 (ARCHITECTURE)

CIVIL ENGINEER:  
OATES ASSOCIATES  
700 OLIVE, SUITE 700  
ST. LOUIS, MO 63101  
PHONE: 314.588.8381  
CERTIFICATE OF AUTHORITY:  
MO #001166 (ENGINEERING)

LAND SURVEYING:  
GLASPER PROFESSIONAL SERVICES, INC.  
13100 MANCHESTER RD., SUITE 85  
ST. LOUIS, MO 63131  
PH: 314.966.9987  
CERTIFICATE OF AUTHORITY:  
MO #2011027103 (LAND SURVEYING)

ELECTRICAL ENGINEER:  
SPUR DESIGN  
11020 KING ST., SUITE 350  
OVERLAND PARK, KS 66210  
PH: 913.369.7200  
CERTIFICATE OF AUTHORITY:  
MO #2014031351 (ENGINEERING)



CIVIL ENGINEER:



720 Olive, Suite 700  
St. Louis, MO 63101  
314.588.8381  
www.oatesassociates.com  
Collinsville St. Louis Belleville St. Charles  
MISSOURI DESIGN FIRM LICENSE NO. 001166

Drawing Title  
SITE PLAN DETAILS

Approved: Project Director

Project Title  
VASTLHCS DEMOLISH  
SEXTRO WAREHOUSE  
JOHN COCHRAN DIVISION

Location  
ST. LOUIS, MO

Date  
04/25/2018

Checked  
TLC

Drawn  
JRD

Project Number  
657-CSI-603JC

Building Number  
30

Drawing Number  
C3.4

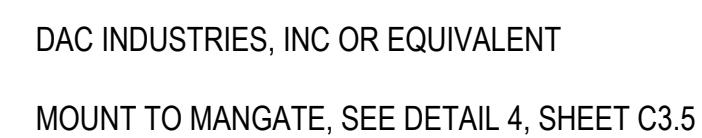
Dwg. 20 -OF- 54

BID DOCUMENTS

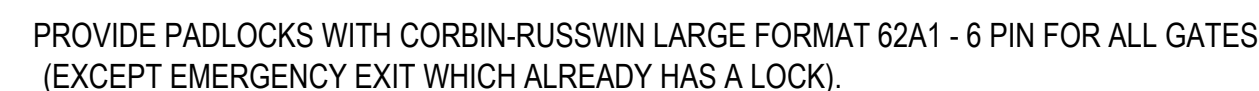
VETERANS  
HEALTH  
ADMINISTRATION







LOCK TO BE COMPATIBLE WITH CORBIN-RUSSWIN LARGE FORMAT 62A1 - 6 PIN FOR ALL GATES.



**GATE OPERATOR AND CONTROLS:**  
GATE OPERATOR MANUFACTURED BY LINEAR / OSCO, MODEL VS-GSLG.

MOTOR AND OPERATOR CONTROLS SHALL BE ENCLOSED IN A WATERPROOF, GALVANIZED STEEL CABINET WITH POWDER COATED FINISH. SHALL INCLUDE COLD WEATHER PACKAGE WITH BOX HEATER.

A NEMA 3 DISCONNECT SHALL BE INSTALLED ON THE GATE OPERATOR.

THE GATE CONTROLS SHALL INCLUDE SHORT CIRCUIT AND OVERLOAD PROTECTION. INCLUDE PROVISIONS IN 24V CONTROL CIRCUIT FOR NORMALLY OPEN AND/OR NORMALLY CLOSED CONTACTS, FOR REMOTE CONTROL OF THE OPEN COMMAND FOR GATE. TERMINATIONS SHALL BE ON A TERMINAL STRIP, WIRING TO PIG-TAILS IS NOT ACCEPTABLE. INCLUDE AUDIBLE DEVICE FOR NOTIFICATION WHEN GATE IS STARTING TO MOVE.

INCLUDE OPEN/CLOSE/STOP PUSHBUTTON STATION INSTALLED INSIDE THE CABINET.

PROVISIONS ON TERMINAL STRIP AND IN CONTROLS FOR SECURITY INTERFACE FOR REMOTE OPEN COMMAND.

INCLUDE PHOTO EYE THRU BEAM (WITH HEATED HEADS) "IR55 INDUSTRIAL THRU-BEAM PHOTOELECTRIC CONTROL" MANUFACTURED BY MMTC TO PREVENT GATE FROM CLOSING WHEN BEAM IS INTERRUPTED. INCLUDE EDGE SAFETIES ON GATE (MILLER ELECTRIC ME-120). WHERE TAIL OF GATE IS NOT WRAPPED BY FENCE AND EXPOSED, INSTALL EDGE SAFETY ON THE BACK SIDE OF GATE ALSO.

INCLUDE PAVEMENT LOOP DETECTORS FOR FREE EXIT. ADD SECOND LOOP ON EXTERIOR OF GATE AND GATE OPERATOR TIMER SO CLOSE DOES NOT START UNTIL VEHICLE CLEARS EXTERIOR LOOP. LOOP DETECTOR SHALL BE MODEL # "10MATRIX2 S-1224" MANUFACTURED BY BEA INC.

ADD KEYED SWITCH WITH 7 PIN BEST LOCK CYLINDER. SWITCH SHALL BE INSTALLED IN WATER PROOF BOX, ON EXTERIOR OF GATE AT CARD READER STAND.

CONSULTANTS:

**ARCHITECT:**  
SPUR DESIGN  
320 NW 10TH ST., SUITE A  
OKLAHOMA CITY, OK 73103  
PHONE: 405.842.6100  
CERTIFICATE OF AUTHORITY:  
MO #2012034754 (ARCHITECTURE)

**CIVIL ENGINEER:**  
OATES ASSOCIATES  
700 OLIVE, SUITE 700  
ST. LOUIS, MO 63101  
PHONE: 314.588.8381  
CERTIFICATE OF AUTHORITY  
MO #001166 (ENGINEERING)

**LAND SURVEYING:**  
GLASPER PROFESSIONAL SERVICES, INC.  
13100 MANCHESTER RD., SUITE 85  
ST. LOUIS, MO 63131  
PH: 314.966.9987  
CERTIFICATE OF AUTHORITY:  
MO #2011027103 (LAND SURVEYING)

**ELECTRICAL ENGINEER:**  
SPUR DESIGN  
11020 KING ST., SUITE 350  
OVERLAND PARK, KS 66210  
PH: 913.369.7200  
CERTIFICATE OF AUTHORITY:  
MO #2014031351 (ENGINEERING)



CIVIL ENGINEER:



**720 Olive, Suite 700  
St. Louis, MO 63101  
314.588.8381  
www.oatesassociates.com**

---

**Collinsville St. Louis Belleville St. Charles**

MISSOURI DESIGN FIRM LICENSE NO.: 001166

Drawing Title	SITE PLAN DETAILS
---------------	-------------------

Approved: Project Director

Project Title	VASTLHCS DEMOLISH SEXTRO WAREHOUSE JOHN COCHRAN DIVISION
---------------	--

Location	ST. LOUIS, MO
----------	---------------

Checked
TLC

Drawn
JRD

Project Number	657-C SI-603JC
----------------	----------------

Building Number  
30

Drawing Number

C3.5

Dwg. 21 -OF- 54

BID DOCUMENTS

**VETERANS  
HEALTH  
ADMINISTRATION**







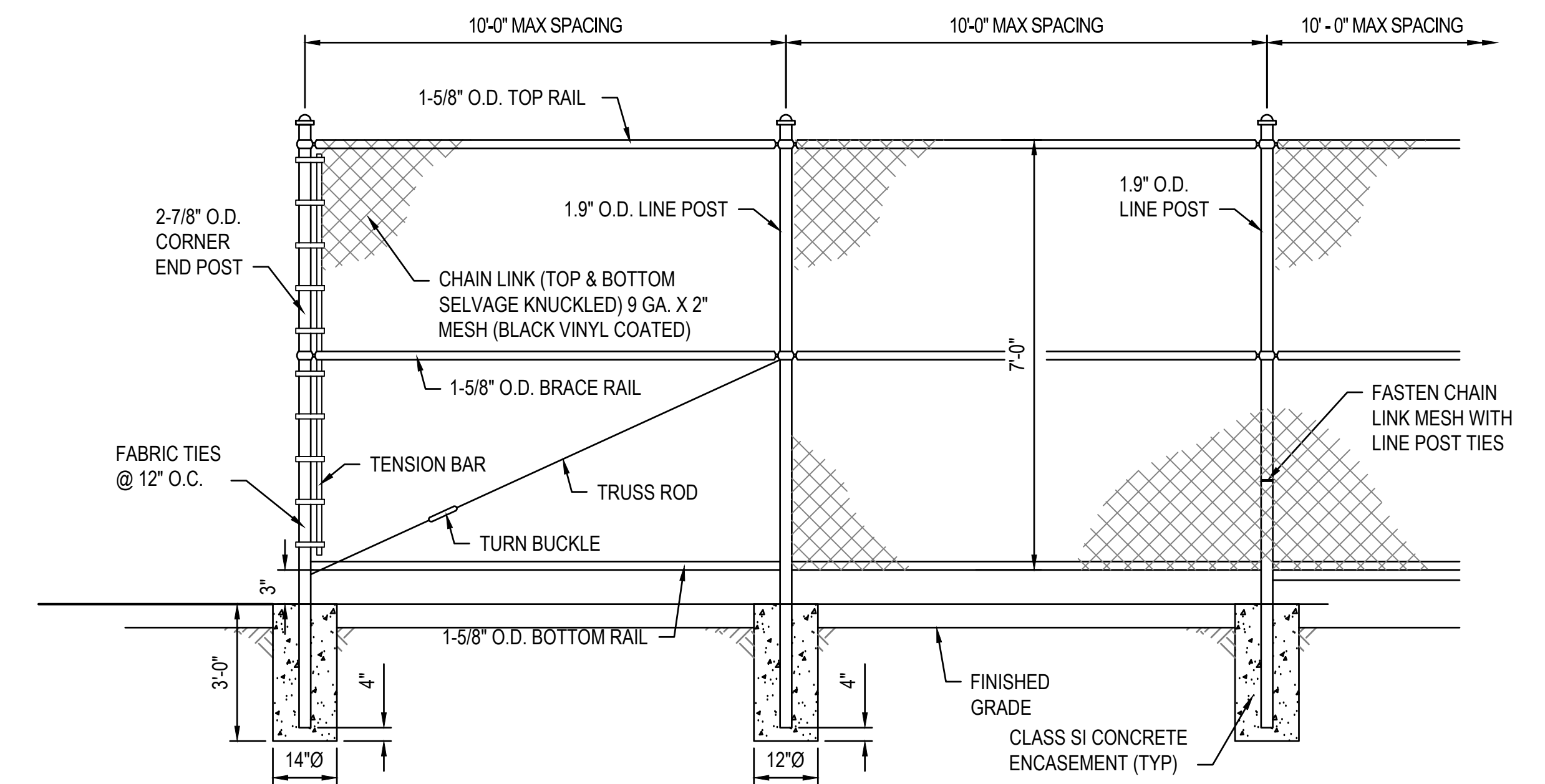
CONCRETE: 5000 PSI MIN, 5-6% AIR  
REINFORCEMENT: WALLS 8x24 GAUGE WWF TO EQUAL .12 SQ. IN. / V.F. MIN.  
FLOOR AND TOP SLAB: #4 REBAR @ 6" O.C. BOTH WAYS (CONFORMS TO ASTM  
C478 AND AASHTO HS-20 STANDARDS)  
SEALANT: 1" MASTIC ROPE SEALANT ON ALL JOINTS  
SHOP DRAWINGS: ENGINEER APPROVED SHOP DRAWINGS MUST BE  
SUBMITTED TO MSD, PRIOR TO THE CONSTRUCTION OF THIS STRUCTURE.  
MSD CONTACT: BRIAN DUNN (314) 335-2072

 Department of  
Veterans Affairs





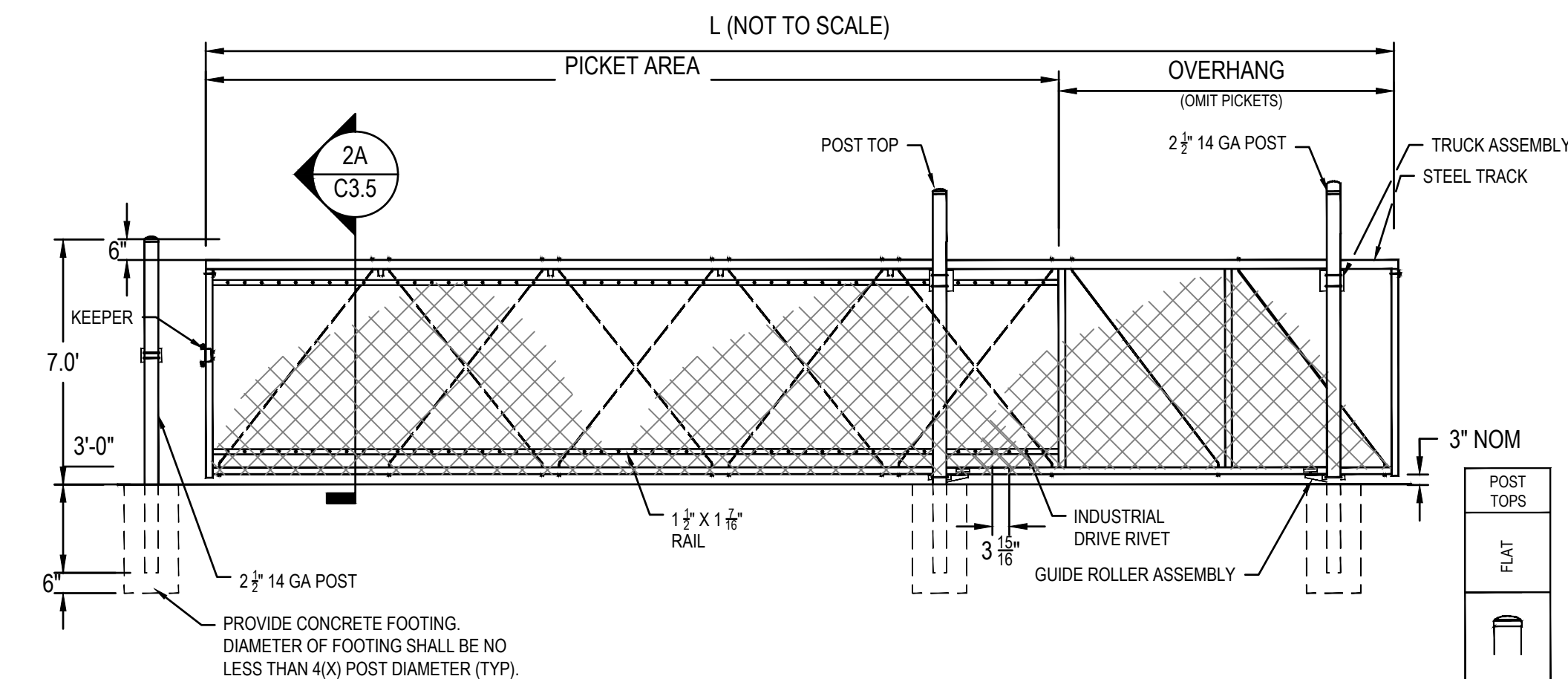




1  
C3.8

BIORETENTION DETAIL

SCALE: NO SCALE

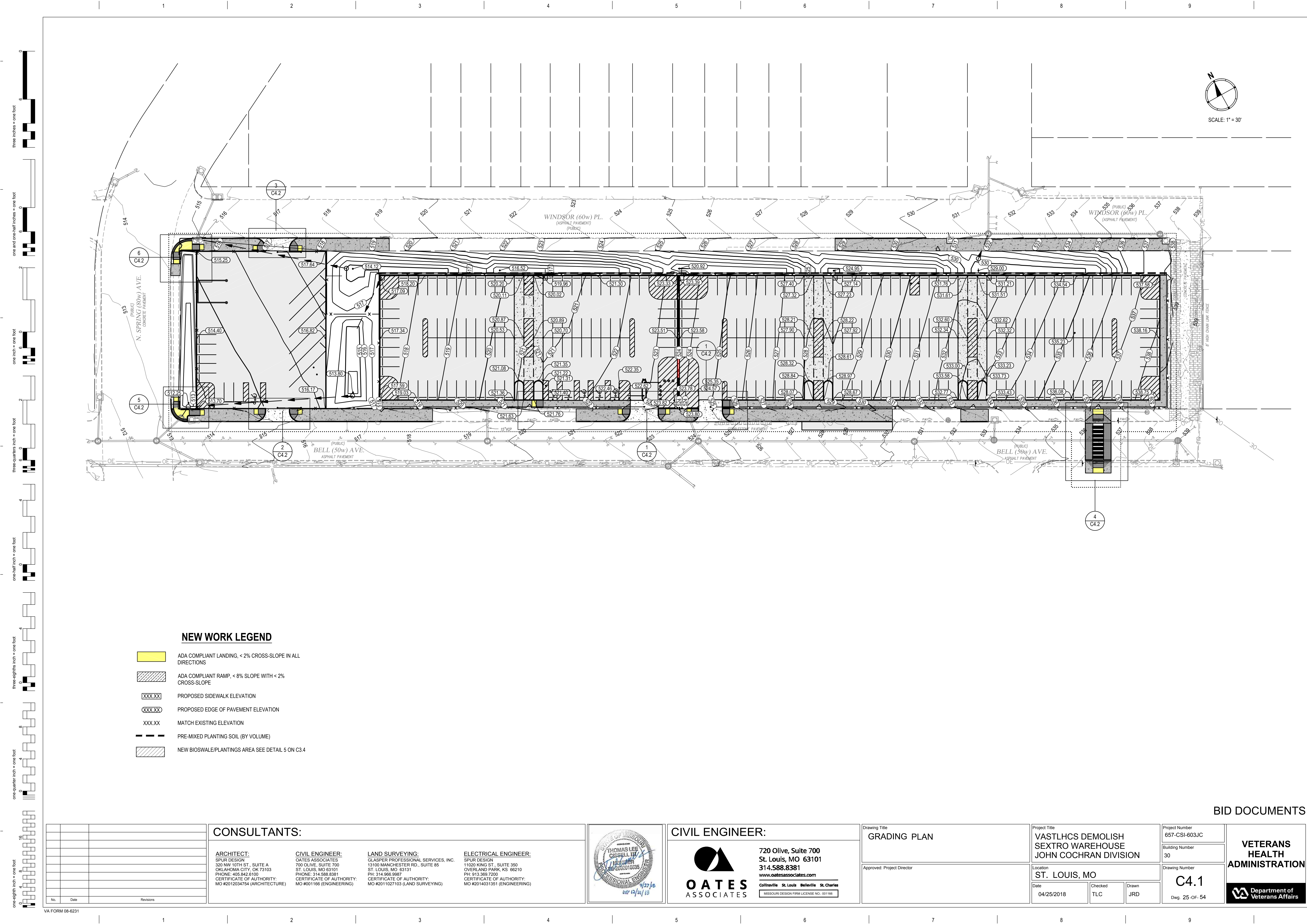


CANTILEVERED SLIDING  
GATE SECTION (TYP)

4 CANTILEVERED SLIDING GATE  
C3.8 SCALE: NO SCALE

 Department of  
Veterans Affairs



[illegible]









SCALE: 1" = 5'



Department of  
Veterans Affairs