

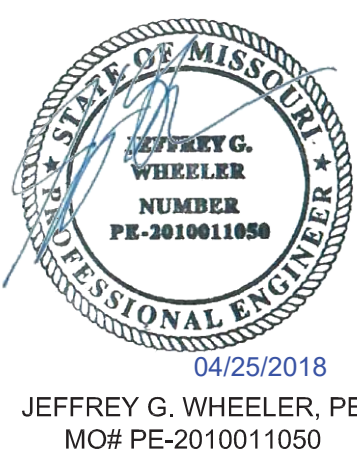
CONSULTANTS:

ARCHITECT:  
SPUR DESIGN  
320 NW 10TH ST., SUITE A  
OKLAHOMA CITY, OK 73103  
PHONE: 405.842.6100  
CERTIFICATE OF AUTHORITY:  
MO #2012034754 (ARCHITECTURE)

CIVIL ENGINEER:  
OATES ASSOCIATES  
100 LANIER COURT, SUITE 1  
COLLINGSVILLE, IL 62234  
PHONE: 618.345.2200  
CERTIFICATE OF AUTHORITY:  
MO #201168 (ENGINEERING)

LAND SURVEYING:  
GLASPER PROFESSIONAL SERVICES, INC.  
13100 MANCHESTER RD., SUITE 85  
ST. LOUIS, MO 63131  
PH: 314.966.9987  
CERTIFICATE OF AUTHORITY:  
MO #2011027103 (LAND SURVEYING)

ELECTRICAL ENGINEER:  
SPUR DESIGN  
11020 KING ST., SUITE 350  
OVERLAND PARK, KS 66210  
PH: 913.369.7200  
CERTIFICATE OF AUTHORITY:  
MO #2014631351 (ENGINEERING)



PRIME CONSULTANT:

RIVERFRONT Safety & Health

A Service Disabled Veteran Owned Small Business (SDVOSB)  
1139 Olive Street, Suite 300 - Saint Louis, MO 63101  
ph 314-434-9492 - fx 314-434-9733  
RiverfrontEnvironmental.com



Drawing Title

TECHNOLOGY LEGEND

Approved: Project Director

Project Title

VASTLHCS DEMOLISH  
SEXTRO WAREHOUSE  
JOHN COCHRAN DIVISION

Location

ST. LOUIS, MO

Date

04/25/2018

Checked

JGW

Drawn

ABM

Project Number

657-CSI-603JC

Building Number

30

Drawing Number

30-TS000

Dwg. 51 -OF- 54

BID DOCUMENTS

Veterans  
Health  
Administration



GENERAL NOTES:

- DRAWINGS ARE DIAGRAMMATIC ONLY AND REPRESENT THE GENERAL SCOPE OF WORK. REVIEW THE GENERAL NOTES, SPECIFICATIONS AND PLANS FOR ADDITIONAL REQUIREMENTS THAT MAY NOT BE SPECIFICALLY CALLED OUT IN THIS PORTION OF THE CONSTRUCTION DOCUMENTS. NOTIFY THE CONTRACTING OFFICERS REPRESENTATIVE (COR) OF ANY CONFLICTS OR DISCREPANCIES PRIOR TO SUBMISSION OF BID.
- DRAWINGS AND SPECIFICATIONS GOVERN WHERE THEY EXCEED CODE REQUIREMENTS.
- UTILITIES PRESENTED ON THESE DRAWINGS ARE SHOWN BASED ON THE BEST AVAILABLE INFORMATION. FIELD VERIFY THE EXACT LOCATIONS IN THE FIELD PRIOR TO COMMENCING CONSTRUCTION. CONTRACTOR SHALL NOTIFY LOCAL UTILITY LOCATING SERVICES AT LEAST 48 HOURS BEFORE PROCEEDING WITH ANY EXCAVATION.
- DAMAGE TO ANY EXISTING UTILITIES SHALL BE REPAIRED IN ACCORDANCE WITH THE VA'S STANDARD CONSTRUCTION SPECIFICATIONS AT NO ADDITIONAL COST.
- TAKE NECESSARY PRECAUTIONS TO PROTECT ROOT SYSTEMS OF SHRUBS, PLANTS, AND TREES ALONG THE AREA OF EXCAVATION.
- EXCAVATED SOILS SHALL NOT BE CONSIDERED OR USED OFF SITE AS CLEAN FILL; MUST BE DISPOSED IN ACCORDANCE WITH RSM6 260.200-345 AT A LICENSED SANITARY LANDFILL FOLLOWING COORDINATION AND APPROVAL BY OWNER. SEE APPLICABLE SECTIONS OF SPECIFICATION 02 83 33.13 FOR DETAILS.
- SOILS SCHEDULED FOR EXCAVATION MAY CONTAIN LEAD ABOVE USGS BACKGROUND CONCENTRATIONS; CONTRACTORS PERFORMING SOIL EXCAVATION RESPONSIBLE FOR DEMONSTRATING COMPLIANCE WITH 29 CFR 1926.62. SEE APPLICABLE SECTIONS OF SPECIFICATION 02 83 33.13 FOR DETAILS.

ABBREVIATIONS

#		E		N	
1P	SINGLE POLE	EC	EMPTY CONDUIT	N	NEUTRAL
1PH	SINGLE-PHASE	EG	EQUIPMENT GROUND	NA	NOT APPLICABLE
3P	THREE POLE	EL	ELEVATION	NEC	NATIONAL ELECTRICAL CODE
3PH	THREE-PHASE	ELEC	ELECTRIC OR ELECTRICAL	NEMA	NATIONAL ELECTRICAL MANUFACTURERS ASSOCIATION
3W	THREE WIRE	ELEV	ELEVATOR	NFPA	NATIONAL FIRE PROTECTION ASSOCIATION
4W	FOUR WIRE	EMCP	EMER. MONITORING CONTROL PANEL	NIC	NOT IN CONTRACT
EMER	EMERGENCY	EMT	ELECTRIC METALLIC TUBING	NL	NIGHT LIGHT
EMI	ELECTROMAGNETIC INTERFERENCE	ENC	ENCLOSURE	NO	NORMALLY OPEN
A		EPO	EMERGENCY POWER OFF	NS	NO SCALE
A/C	AIR CONDITIONING	ESMT	EASEMENT	NTS	NOT TO SCALE
AE	ARCHITECT/ENGINEER	ETO	EXISTING TO BE DEMOLISHED	O	
AAP	ALARM ANNUNCIATOR PANEL	ETR	EXISTING TO REMAIN	OC	ON CENTER
AC	ALTERNATING CURRENT OR ARMORED CABLE	EWC	ELECTRIC WATER COOLER	OD	OUTSIDE DIAMETER
ACC	ACCESSIBLE	EWV	ELECTRIC WATER HEATER	OL	OVERLOAD
ADDL	ADDITIONAL	EXIST	EXISTING	P	POLE
ADJ	ADJACENT, ADJOINING	FA	FIRE ALARM	PA	PUBLIC ADDRESS
ADO	AUTOMATIC DOOR OPENER	FAB	FIRE ALARM ANNUNCIATOR PANEL	PB	PANELBOARD, PULL BOX, OR PUSHBUTTON
AF	AMPERE FRAME OR AMP FUSE	FABX	FIRE ALARM BOX	PBPU	PREFABRICATED BEDSIDE PATIENT UNIT
AFC	ABOVE FINISHED COUNTER, AUTOMATIC FREQUENCY CONTROL, OR AVAILABLE FAULT CURRENT	FACP	FIRE ALARM CONTROL PANEL	PCB	POLYCHLORINATED BIPHENYL
AFF	ABOVE FINISHED FLOOR	FC	FOOTCANDLE	PEC	PHOTOELECTRIC CELL
AFG	ABOVE FINISHED GRADE	FI	FILM ILLUMINATOR	PE	PEDESTAL
AH	AMPERE HOUR	FIXT	FIXTURE	PEND	PENDANT
AHU	AUTHORITY HAVING JURISDICTION	FLA	FULL LOAD AMPS	PH	PHASE
AIC	AMPERE INTERRUPTING CAPACITY	FLEX	FLEXIBLE METALLIC CONDUIT	PANL	PANEL
ALT	ALTERNATE	FLUOR	FLUORESCENT	POD	POWER OPERATED DAMPER
AMB OR A	AMBIENT	FT	FEET OR FOOT	PT	POTENTIAL TRANSFORMER
AMP	AMPERE	FVR	FULL VOLTAGE NON-REVERSING	PTV	POWER TYPE ROOF VENTILATION
ARCH	ARCHITECT			PVC	POLYVINYL CHLORIDE (PLASTIC)
ASC	AMPS SHORT CIRCUIT			PWR	POWER
AT	AMPERE TRIP				
ATS	AUTOMATIC TRANSFER SWITCH				
AUTO	AUTOMATIC				
AV	AUDIO VISUAL				
B		G	G OR GND GROUND OR GENERATOR		
BAT	BATTERY	GEN	GENERATOR	R	REFLECTED CEILING PLAN
BC	BARE COPPER	GFCI	GROUND FAULT CIRCUIT INTERRUPTER	RCP	RECEPTACLE
BD	BOARD	GTB	GROUND TERMINAL BOX	SD	SMOKE DETECTOR
BFF	BELOW FINISH FLOOR	H		SGS	RECESSED RIGID GALVANIZED STEEL
BIL	BASIC INSULATION LEVEL	HID	HIGH INTENSITY DISCHARGE	RM	ROOM
BLDG	BUILDING	HOA	HAND-OFF-AUTOMATIC	RMS	ROOT MEAN SQUARE
BP	BOILER PLANT	HP	HORSEPOWER	REQD	REQUIRED
BRKR	BREAKER	HT	HEIGHT	S	
BYP	BY PASS	HZ	HERTZ	SCC	SHORT CIRCUIT CAPACITY
C		I		SES	SERVICE ENTRANCE SECTION
C	CONDUIT	IESNA	ILLUMINATION ENGINEERING SOCIETY	SD	SQUARE FOOT (FEET)
CAP	CAPACITY	IG	ISOLATED GROUND	SF	SHEET
CAT	CATALOG	IMC	INTERMEDIATE METAL CONDUIT	SI	INTERNATIONAL SYSTEM OF UNITS
CATV	COMMUNITY ANTENNA TELEVISION	INCAND	INCANDESCENT	SPEC	SPECIFICATION
CCR	CONTROL CONTACTOR	IR	INFRARED	SPST	SINGLE POLE, SINGLE THROW
CCTV	CLOSED CIRCUIT TELEVISION	IWH	INSTANTANEOUS WATER HEATER	SURF	SURFACE
CANDELA	CANDELA	J		SW	SWITCH
CD	CONSTRUCTION DOCUMENTS	JB	JUNCTION BOX	SWGR	SWITCHBOARD SWITCHGEAR
CF	CONTRACTOR FURNISHED	J-BOX	JUNCTION BOX	T	
CFICI	CONTRACTOR FURNISHED/OWNER INSTALLED	K		TC	TIME CLOCK
CF/OI	CONTRACTOR FURNISHED/OWNER INSTALLED	KV	KILOVOLT	TEL	TELEPHONE
CFE	CONTRACTOR FURNISHED EQUIPMENT	KVA	KILOVOLT AMPERE	TP	TWISTED PAIR
CHW	CHILLED WATER	KVAH	KILOVOLT AMPERE PER HOUR	TPS	TWISTED PAIR SHIELDED
CHWP	CHILLED WATER PUMP	KVAR	KILOVOLT AMPERE REACTIVE	TTB	TELEPHONE TERMINAL BOARD
CKT	CIRCUIT	KW	KILOWATT	TV	TELEVISION
CKT BRKR	CIRCUIT BREAKER	KWH	KILOWATT HOUR	TYP	TYPICAL
CLF	CURRENT LIMITING FUSE	KWHM	KILOWATT HOUR METER	U	
CLS	CEILING	L		UF	UNDERFLOOR DUCT
CMU	CONCRETE MASONRY UNIT	LED	LIGHT EMITTING DIODE	UGND	UNDERGROUND
COAX	COAX CABLE	LF	LINEAR FEET (FOOT)	UL	UNDERWRITERS LABORATORY
COMM	COMMUNICATION	LUMEN	LUMEN	UNO	UNLESS NOTED OTHERWISE
CONC	CONCRETE	LP	LIGHT POLE	UPS	UNINTERRUPTIBLE POWER SUPPLY
CONT	CONTINUE	LPS	LOW PRESSURE SODIUM	UTIL	UTILITY
CONTR	CONTRACTOR	LRA	LOCKED ROTOR AMPS	V	VOLT
COORD	COORDINATE	LT	LOCAL TEMPERATURE CONTROL PANEL	VA	VOLT AMPERE
CPT	CONTROL POWER TRANSFORMER	LTG	LIGHTING	VAR	VOLT AMPERE REACTIVE
CRI	COLOR RENDERING INDEX	LTG PNL	LIGHTING PANEL	VFD	VARIABLE FREQUENCY DRIVE
CT	CURRENT TRANSFORMER	LTNG	LIGHTNING	VOLT	VOLTAGE
CTV	CABLE TELEVISION	LV	LOW VOLTAGE	W	WATT
CU	COPPER	M		WH	WATER HEATER
CU FT	CUBIC FEET	MATV	MASTER ANTENNA TELEVISION SYSTEM	WP	WEATHERPROOF
D		MAX	MAXIMUM	X	
DB	DECIBEL OR DIRECT BURIAL	MC	METAL-CLAD	XFER	TRANSFER
DC	DIRECT CURRENT	MCA	MINIMUM CIRCUIT AMPS	XFMR	TRANSFORMER
DCP	DIMMER CONTROL PANEL	MCB	MAIN CIRCUIT BREAKER	XP	EXPLOSION PROOF
DEG C	DEGREES CELSIUS	MCC	MOTOR CONTROL CENTER		
DEG F	DEGREES FAHRENHEIT	MDP	MAIN DISTRIBUTION PANEL		
DEMO	DEMOLITION	MECH	MECHANICAL		
DIAG	DIAGRAM	MH	MOTOR GENERATOR		
DISC	DISCONNECT	MIN	MINIMUM		
DISTR	DISTRIBUTION	MOC	MAXIMUM OVERCURRENT PROTECTION		
DISTR PNL	DISTRIBUTION PANEL	MLO	MAIN LUGS ONLY		
DN	DOWN	MT	MOUNT		
DPDT	DOUBLE POLE, DOUBLE THROW	MTD	MOUNTED		
DPST	DOUBLE POLE, SINGLE THROW	MTG	MOUNTING		
DRSW	DOOR SWITCH	MTS	MANUAL TRANSFER SWITCH		
DS	DISCONNECT SWITCH	MV	MEDIUM VOLTAGE		
DWG	DRAWINGS	MVA	MEGAVOLT-AMPERE		
		MW	MEGAWATT		

ANNOTATION

①	MECHANICAL OR FIRE SPRINKLER PLAN NOTE CALL OUT
①	PLUMBING PLAN NOTE CALL OUT
①	ELECTRICAL OR FIRE ALARM PLAN NOTE CALL OUT
①	TECHNOLOGY PLAN NOTE CALL OUT
①	OWNER FURNISHED, CONTRACTOR INSTALLED EQUIPMENT DESIGNATION
①	PLUMBING EQUIPMENT DESIGNATION
①	EQUIPMENT DESIGNATION TAG
①	NEW WORK TO EXISTING WORK CONNECTION POINT
①	DETAIL REFERENCE
①	SECTION CUT DESIGNATION

STANDARD MOUNTING HEIGHTS

ELECTRICAL:	(AFF. AFG UNLESS NOTED OTHERWISE)
AUDIBLE APPLIANCES (CENTERLINE)	84"
ALARMS	48"
ANNUNCIATOR PANELS	48"
CLOCK OUTLETS (CENTERLINE)	84"
CONTROLS (TOP)	48"
EXIT SIGNS (WALL-MOUNTED, BOTTOM)	80"
FIRE ALARM ANNUNCIATOR PANEL (DISPLAY)	60"
FIRE ALARM BELL (EXTERIOR)	120"
FIRE ALARM CONTROL PANEL/UNIT (DISPLAY)	60"
INTERCOM (AFEA ONLY)	36"
INTERCOMS (TOP)	48"
PANELS & PANELBOARDS (TOP)	72"
PULL STATIONS (HANDLE)	48"
PHOTOCELLS	144"
RECEPTACLES (BOTTOM)	18"
RECEPTACLES (EXTERIOR)	24"
RECEPTACLES (GARAGES)	26"
RECEPTACLES IN EQUIPMENT ROOMS (TOP)	48"
RECEPTACLES ABOVE COUNTERTOPS (TOP)	44"
REMOTE INDICATING LIGHT (EQUIPMENT ROOMS)	48"
REMOTE INDICATING LIGHT (FINISHED AREAS)	CEILING
SAFETY SWITCHES & STARTERS	48"
SWITCHES (TOP)	48"
TELEPHONE/DATA/TV OUTLETS (BOTTOM)	18"
VISIBLE APPLIANCES (CENTERLINE)	84"

COMMUNICATION SYMBOLS

☒	COMMUNICATIONS OUTLET, TYPE AS NOTED #D = DATA, # = QUANTITY OF CABLES #TV = CABLE TELEVISION, # = QUANTITY OF CABLES #V = VOICE, # = QUANTITY OF CABLES
☒	COMMUNICATIONS OUTLET, FLOOR BOX, TYPE AS NOTED #D = DATA, # = QUANTITY OF CABLES #TV = CABLE TELEVISION, # = QUANTITY OF CABLES #V = VOICE, # = QUANTITY OF CABLES
☒	MULTI-SERVICE POWER POLE WITH POWER/DATA, TYPE AS NOTED AND/OR SCHEDULED
☒	MULTI-SERVICE FLOOR BOX/POKE-THRU WITH POWER/DATA, TYPE AS NOTED AND/OR SCHEDULED
☒	COMMUNICATIONS OUTLET, CEILING MTD, TYPE AS NOTED #D = DATA, # = QUANTITY OF CABLES #TV = CABLE TELEVISION, # = QUANTITY OF CABLES
☒	WIRELESS ACCESS POINT, CEILING MOUNTED
☒	INTERCOM, "M" DENOTES MASTER STATION
☒	SPEAKER, WALL MOUNTED
☒	SPEAKER, CEILING MOUNTED
☒	VOLUME CONTROL, WALL MOUNTED
☒	CABLE TRAY, TYPE AS NOTED
☒	GROUND BAR, TYPE AS NOTED
☒	SERVER RACK, TWO-POST, FLOOR MOUNTED
☒	SERVER RACK, WALL MOUNTED
☒	SERVER RACK, FOUR-POST, FLOOR MOUNTED
☒	SERVER CABINET, FLOOR MOUNTED
☒	3/4"x4"x8", FIRE-RATED PLYWOOD BACKBOARD
— CATV —	CABLE TELEVISION LINE
— D —	DATA LINE
— FO —	FIBEROPTIC LINE
— IC —	INTERCOM LINE
— S —	SPEAKER LINE
— T —	TELEPHONE LINE
— T/D —	TELEPHONE/DATA LINE
— UC —	UNDERGROUND COMMUNICATIONS LINE, CABLEING TYPE AS NOTED

SECURITY SYMBOLS

☒	CARD READER, PROXIMITY TYPE
☒	DOOR BELL PUSHBUTTON
☒	DOOR BELL PUSHBUTTON
☒	DOOR POSITION MONITOR
☒	EMERGENCY CALL STATION
☒	ELECTRIFIED LOCKING DEVICE, REQUEST TO EXIT SENSOR, LATCH BOLT MONITOR, AND DOOR POSITION SWITCH
☒	ELECTRIFIED LOCKING DEVICE
☒	GLASS BREAK DETECTOR
☒	GATE OPENER
☒	INTRUSION DETECTION KEYPAD
☒	RFID KEY TAG READER
☒	INTRUSION DETECTION MOTION DETECTOR
☒	DURESS PUSHBUTTON
☒	REQUEST TO EXIT BUTTON
☒	SECURITY CAMERA
— CCTV —	CLOSED CIRCUIT TELEVISION LINE, MIN. 1" RACEWAY







A

B

C

D

E

F

F

three inches = one foot

one and one-half inches = one foot

one inch = one foot

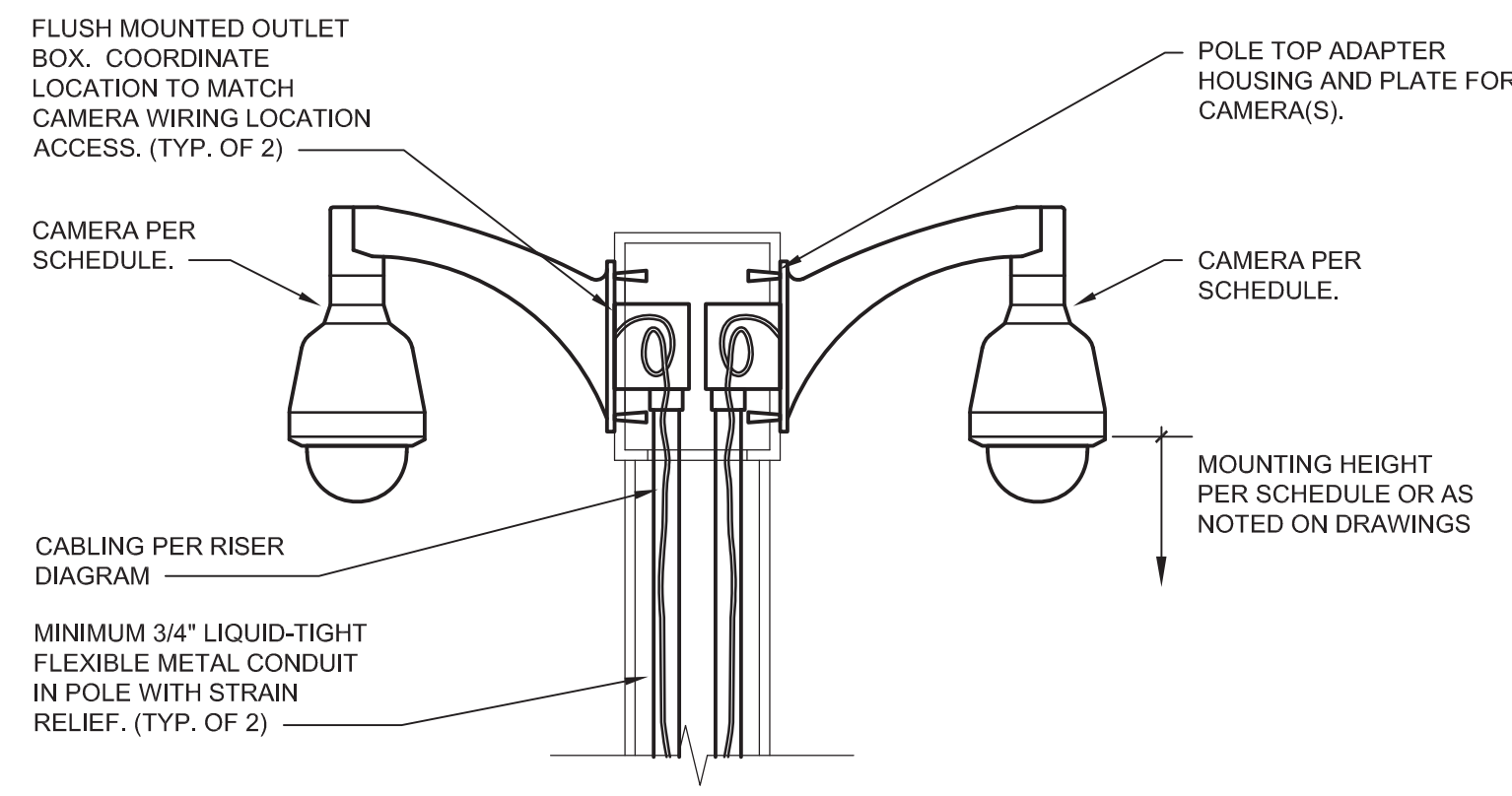
three-quarters inch = one foot

one-half inch = one foot

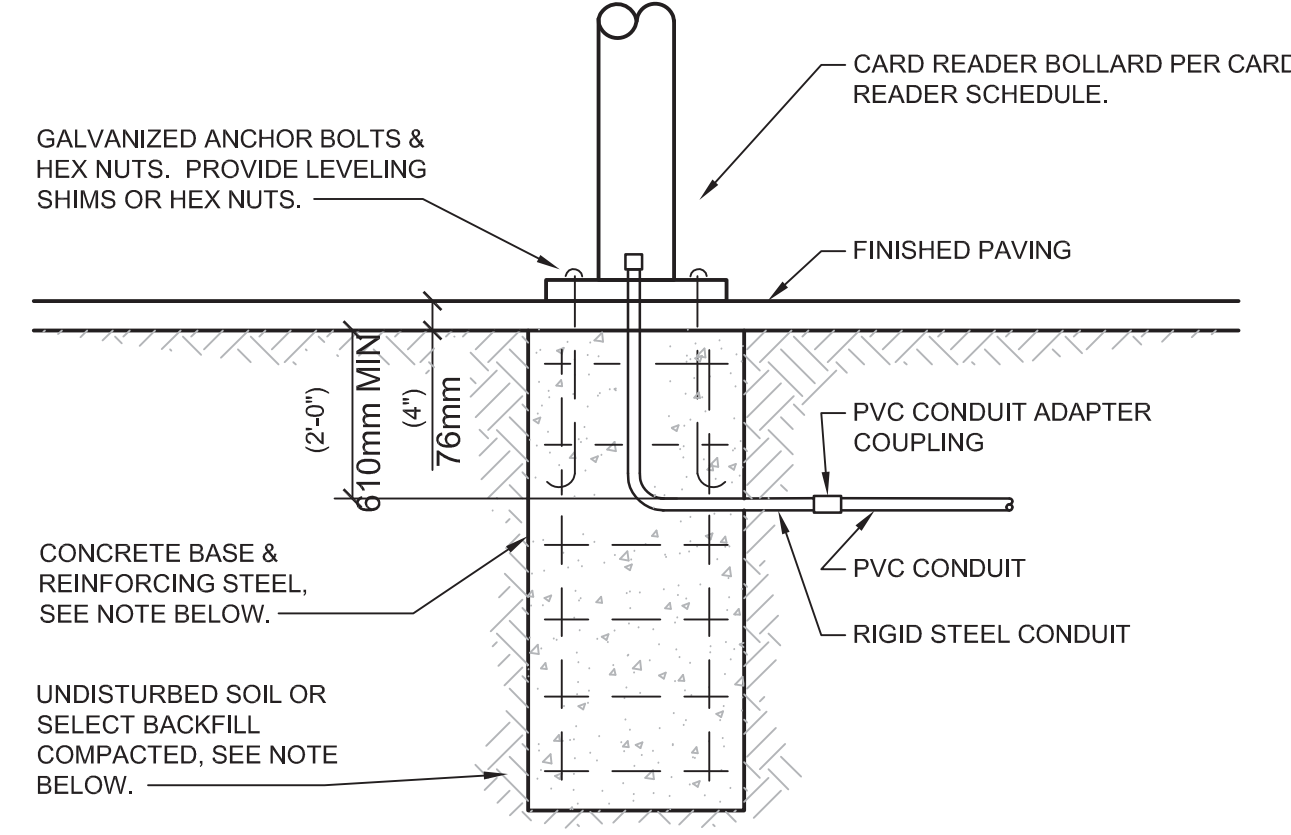
three-eighths inch = one foot

one-quarter inch = one foot

one-eighth inch = one foot

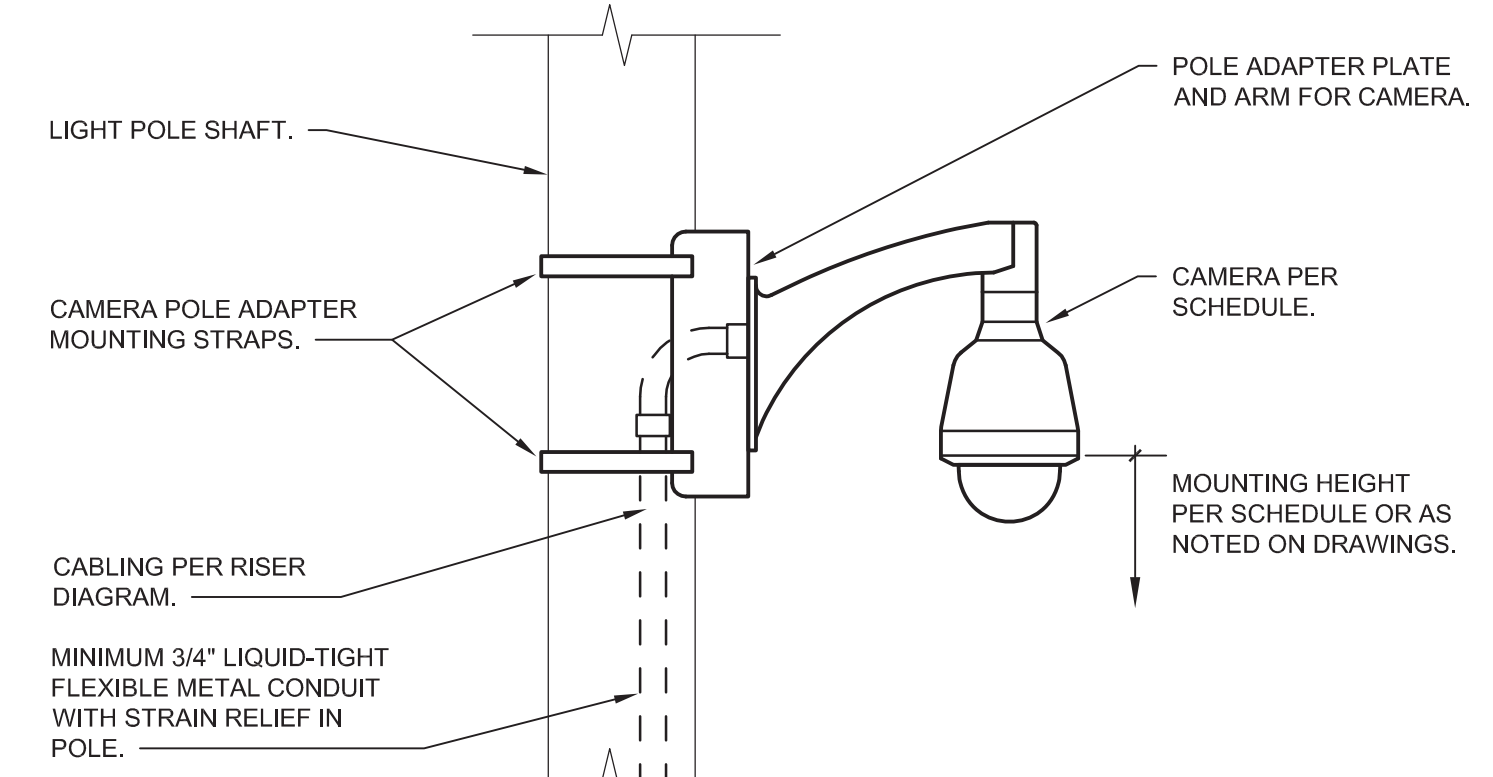


6 EXTERIOR POLE-MOUNTED CAMERA DETAIL  
NOT TO SCALE

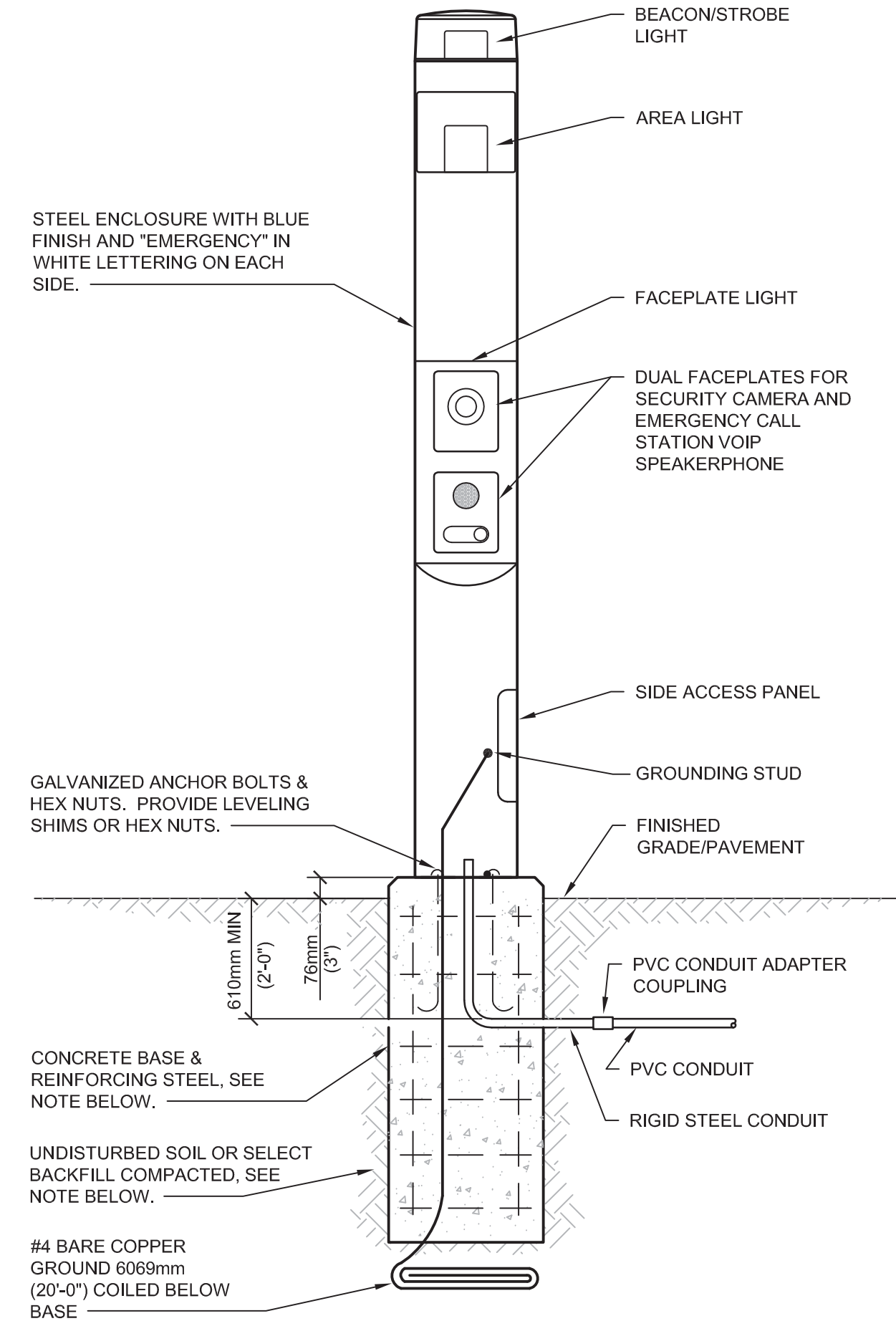


- GENERAL NOTES:
1. BACKFILL, CONCRETE, REINFORCING STEEL, AND ANCHOR BOLTS ARE SHOWN FOR REFERENCE ONLY. POLE BASE STRUCTURAL REQUIREMENTS SHALL BE DESIGNED AND SEALED BY A PROFESSIONAL ENGINEER LICENSED IN THE PROJECT STATE AND SUBMITTED AS PART OF THE SUBMITTAL PROCESS.

7 CARD READER  
BASE DETAIL - PAVED AREAS  
NOT TO SCALE

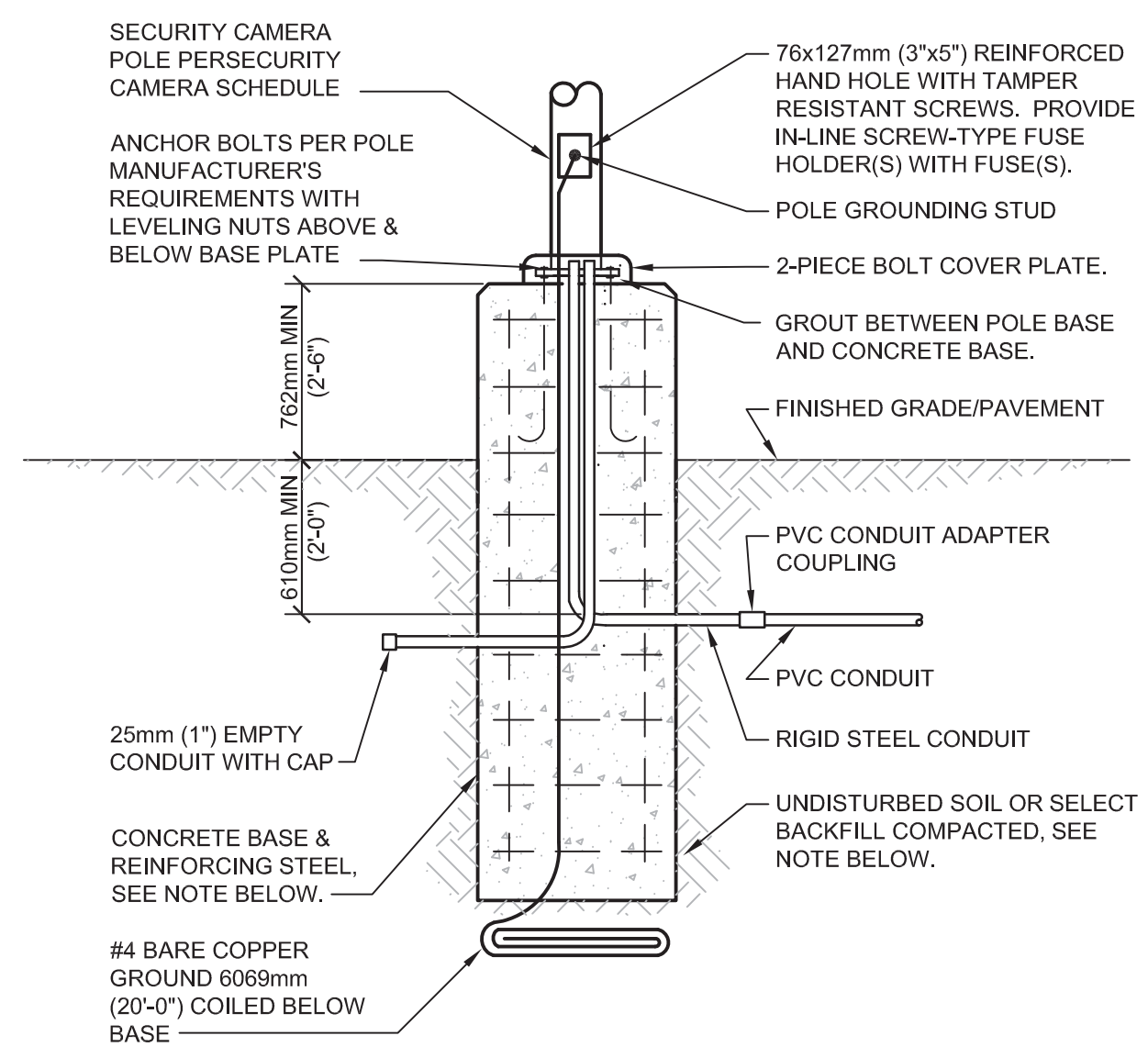


8 EXTERIOR  
LIGHT POLE MOUNTED CAMERA DETAIL  
NOT TO SCALE



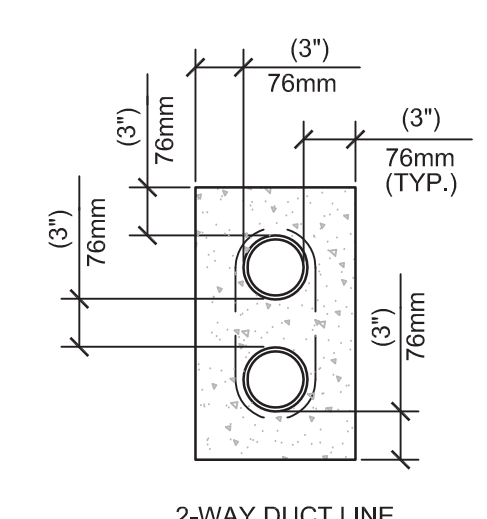
- GENERAL NOTES:
1. BACKFILL, CONCRETE, REINFORCING STEEL, AND ANCHOR BOLTS ARE SHOWN FOR REFERENCE ONLY. POLE BASE STRUCTURAL REQUIREMENTS SHALL BE DESIGNED AND SEALED BY A PROFESSIONAL ENGINEER LICENSED IN THE PROJECT STATE AND SUBMITTED AS PART OF THE SUBMITTAL PROCESS.

4 EMERGENCY CALL STATION  
AND BASE DETAIL  
NOT TO SCALE



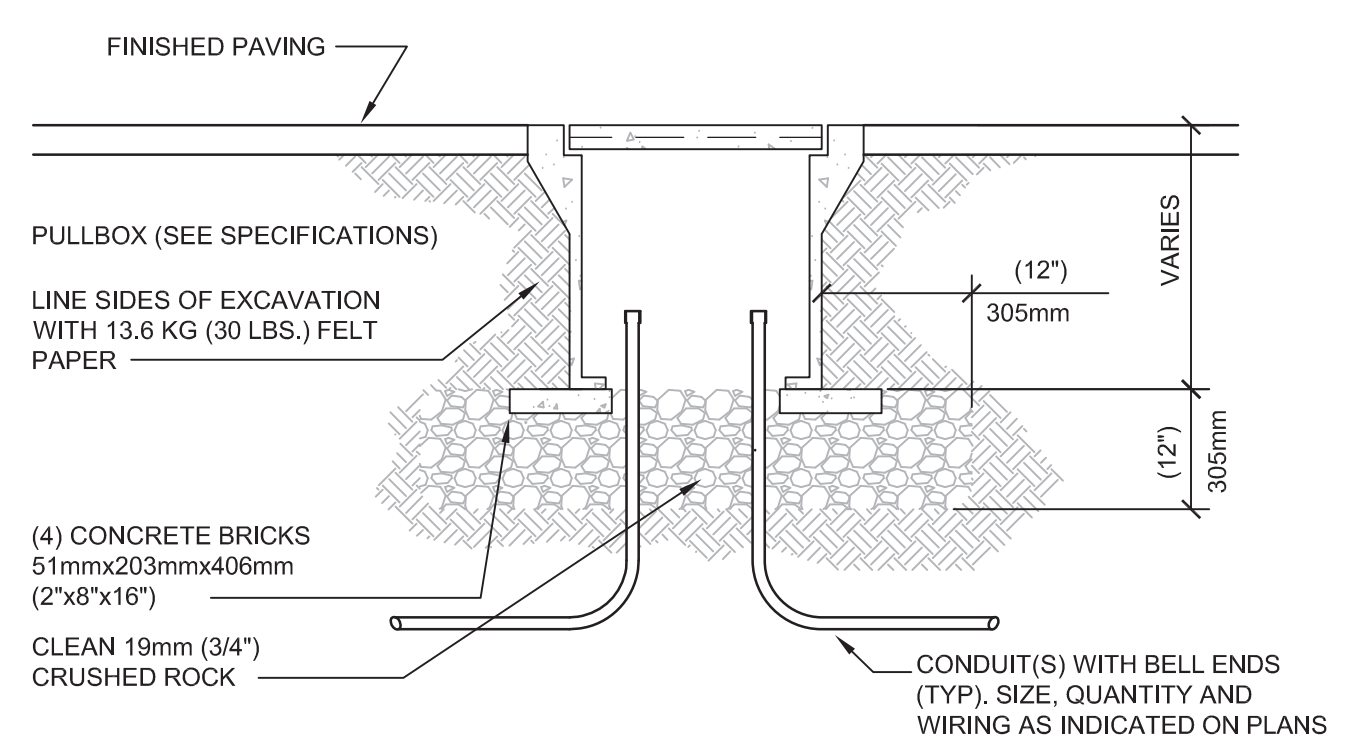
- GENERAL NOTES:
1. BACKFILL, CONCRETE, REINFORCING STEEL, AND ANCHOR BOLTS ARE SHOWN FOR REFERENCE ONLY. POLE BASE STRUCTURAL REQUIREMENTS SHALL BE DESIGNED AND SEALED BY A PROFESSIONAL ENGINEER LICENSED IN THE PROJECT STATE AND SUBMITTED AS PART OF THE SUBMITTAL PROCESS.

5 SECURITY CAMERA  
POLE BASE DETAIL  
NOT TO SCALE

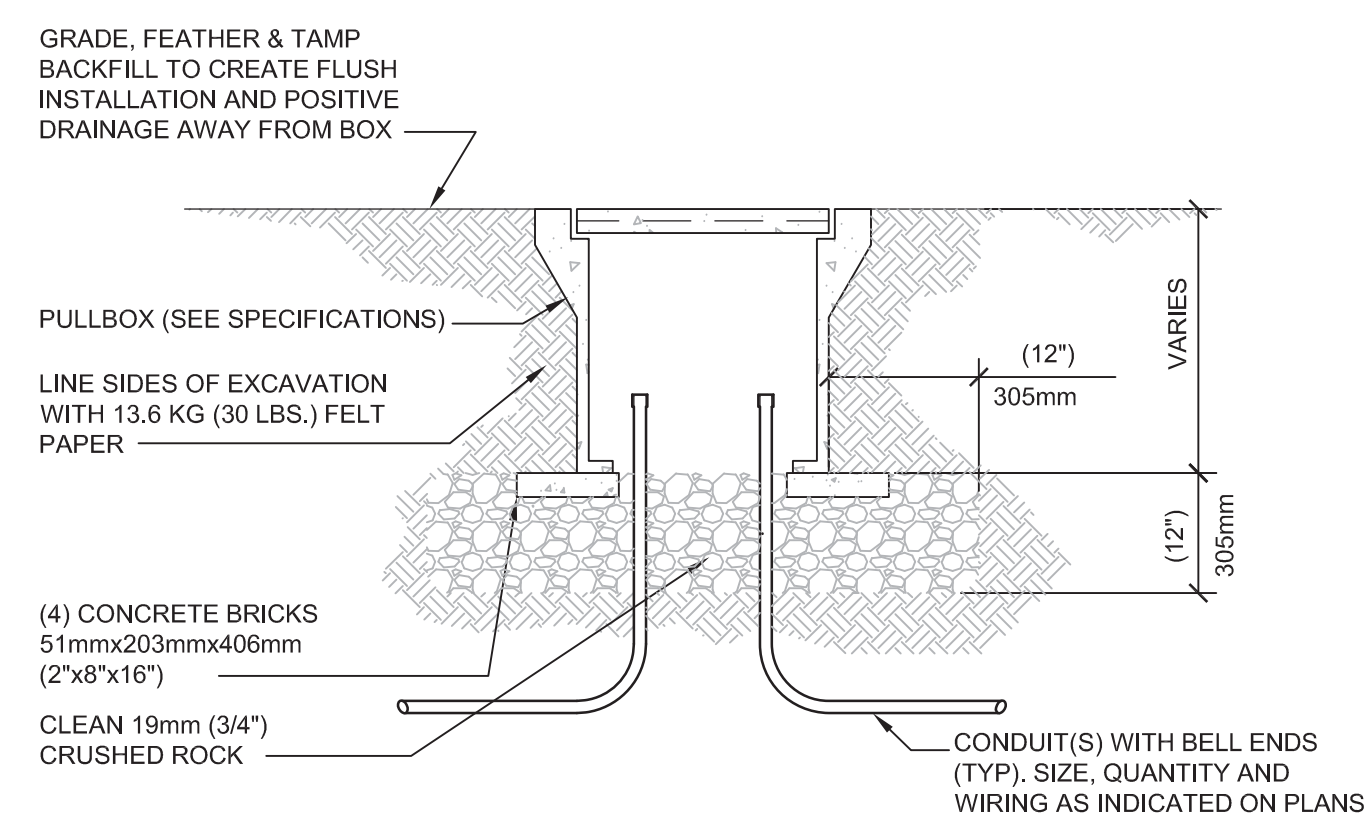


- GENERAL NOTES:
1. CONCRETE SHALL BE 2000 P.S.I. @ 28 DAYS, OR AS SPECIFIED.
  2. PROVIDE #4 REINFORCING RODS ON TOP AND BOTTOM OF DUCTS WHEN CROSSING OR PLACED IN ROADWAYS.
  3. MINIMUM COVER TO TOP OF ENVELOPE SHALL BE 610mm (24") OR AS OTHERWISE SPECIFIED IN SECTION 26 05 41.
  4. PROVIDE COMMUNICATIONS INNERDUCTS AS INDICATED ON THE DRAWINGS.

1 DUCT BANK DETAIL  
NOT TO SCALE



2 UNDERGROUND CONCRETE  
PULLBOX - PAVED AREAS  
NOT TO SCALE



3 UNDERGROUND CONCRETE  
PULLBOX - TURF AREAS  
NOT TO SCALE

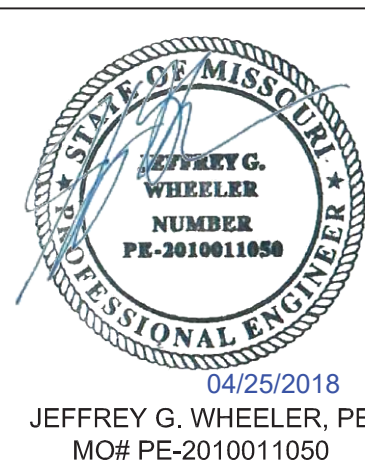
CONSULTANTS:

ARCHITECT:  
SPUR DESIGN  
320 NW 10TH ST., SUITE A  
OKLAHOMA CITY, OK 73103  
PHONE: 405.842.6100  
CERTIFICATE OF AUTHORITY:  
MO #2012034754 (ARCHITECTURE)

CIVIL ENGINEER:  
OATES ASSOCIATES  
100 LANIER COURT, SUITE 1  
COLLINGSVILLE, IL 62234  
PHONE: 618.345.2200  
CERTIFICATE OF AUTHORITY:  
MO #2011166 (ENGINEERING)

LAND SURVEYING:  
GLASPER PROFESSIONAL SERVICES, INC.  
13100 MANCHESTER RD., SUITE 85  
ST. LOUIS, MO 63131  
PH: 314.966.9987  
CERTIFICATE OF AUTHORITY:  
MO #2011027105 (LAND SURVEYING)

ELECTRICAL ENGINEER:  
SPUR DESIGN  
11020 KING ST., SUITE 350  
OVERLAND PARK, KS 66210  
PH: 913.369.7200  
CERTIFICATE OF AUTHORITY:  
MO #2014631351 (ENGINEERING)



PRIME CONSULTANT:

RIVERFRONT Safety & Health  
A Service Disabled Veteran Owned Small Business (SDVOSB)  
1139 Olive Street, Suite 300 - Saint Louis, MO 63101  
ph 314-434-9492 - fx 314-434-9733  
RiverfrontEnvironmental.com

TECHNOLOGY DETAILS

Approved: Project Director

Project Title  
VASTLHCS DEMOLISH  
SEXTRO WAREHOUSE  
JOHN COCHRAN DIVISION

Location  
ST. LOUIS, MO

Date  
04/25/2018

Checked  
JGW

Drawn  
ABM

Project Number  
657-CSE-603JC

Building Number  
30

Drawing Number  
30-TS501  
Dwg. 53 -OF- 54

Veterans  
Health  
Administration







**NOTES:**

1. PROVIDE CAMERA COMPATIBLE WITH EXISTING VASS SYSTEM HEAD-END RECORDING AND MONITORING EQUIPMENT IN BUILDING 1.
2. PROVIDE ALL ACCESSORIES AS REQUIRED FOR A COMPLETE AND OPERATIONAL SYSTEM COMPATIBLE WITH THE EXISTING VASS SYSTEM IN BUILDING 1
3. PROVIDE ALL UPGRADES TO EXISTING VASS SYSTEM IN BUILDING 1 TO INCORPORATE NEW VIDEO SURVEILLANCE CAMERAS.

NOTES:	
1.	PROVIDE CARD READERS COMPATIBLE WITH THE EXISTING PACS SYSTEM AT THE VA FACILITIES.
2.	PROVIDE ALL ACCESSORIES AS REQUIRED FOR A COMPLETE AND OPERATIONAL SYSTEM COMPATIBLE WITH THE EXISTING PACS SYSTEM
3.	PROVIDE ALL UPGRADES TO THE EXISTING PACS SYSTEM TO INCORPORATE ALL NEW DEVICES.



COMMUNICATIONS/SECURITY  
CABINET ELEVATION  
1/2"=1'-0"

CONSULTANTS:

**ARCHITECT:**  
SPUR DESIGN  
320 NW 10TH ST., SUITE A  
OKLAHOMA CITY, OK 73103  
PHONE: 405.842.6100  
CERTIFICATE OF AUTHORITY:  
MO #2012034754 (ARCHITECTURE)

**CIVIL ENGINEER:**  
OATES ASSOCIATES  
100 LANTER COURT, SUITE 1  
COLLINSVILLE, IL 62234  
PHONE: 618.345.2200  
CERTIFICATE OF AUTHORITY  
MO #001166 (ENGINEERING)

**LAND SURVEYING:**  
GLASPER PROFESSIONAL SERVICES, INC  
13100 MANCHESTER RD., SUITE 85  
ST. LOUIS, MO 63131  
PH: 314.966.9987  
CERTIFICATE OF AUTHORITY:  
MO #2011027103 (LAND SURVEYING)

**ELECTRICAL ENGINEER:**  
SPUR DESIGN  
11020 KING ST., SUITE 350  
OVERLAND PARK, KS 66210  
PH: 913.369.7200  
CERTIFICATE OF AUTHORITY:  
MO #2014031351 (ENGINEERING)



PRIME CONSULTANT:

RIVERFRONT Safety &amp; Health

A Service Disabled Veteran Owned Small Business (SDVOSB)  
1139 Olive Street, Suite 300 – Saint Louis, MO 63101  
ph 314-436-9492 – fx 314-436-9733  
RiverfrontEnvironmental.com

Drawing Title

TECHNOLOGY RISER DIAGRAMS  
AND SCHEDULES

Approved: Project Director

Project Title	VASTLHCS DEMOLISH SEXTRO WAREHOUSE JOHN COCHRAN DIVISION
---------------	--

ST. LOUIS, MO

Date

Checked

Drawn

Project Number
657-CSI-603JC

Building Number
30

Drawing Number  
**30-TS601**

**Veterans  
Health  
Administration**

