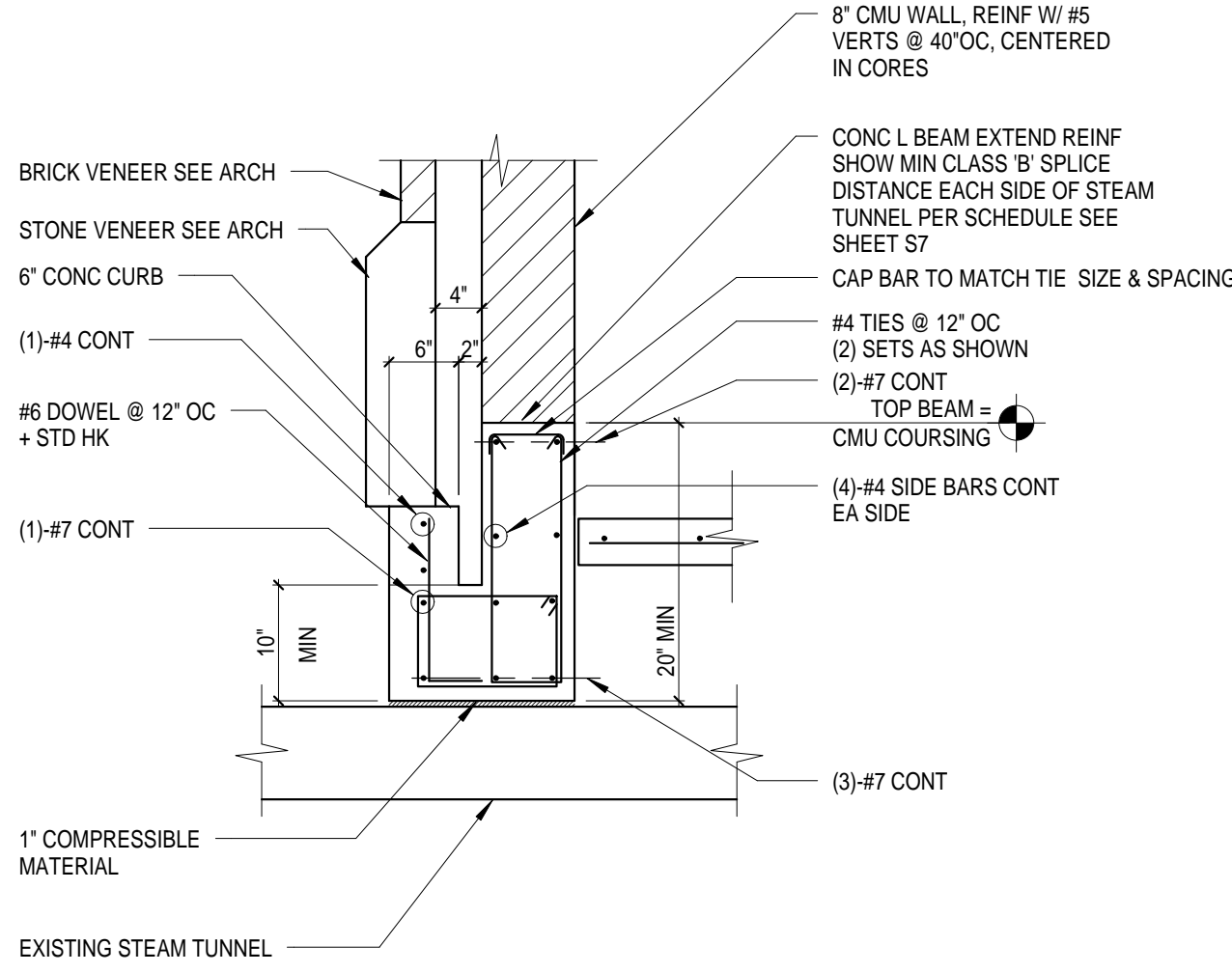
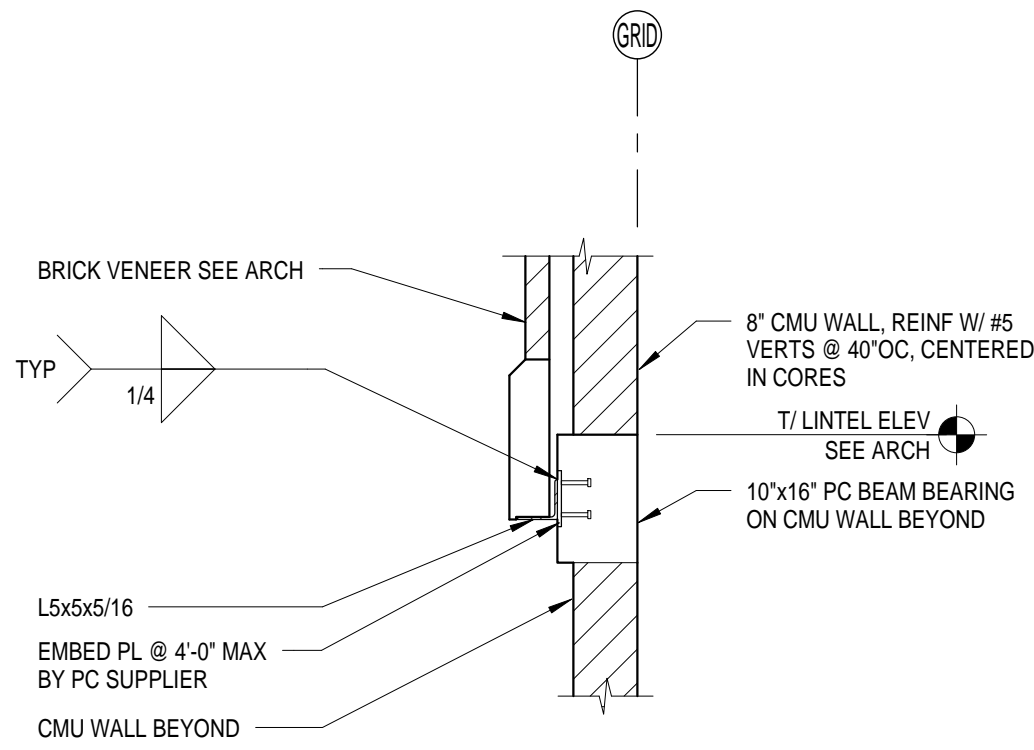


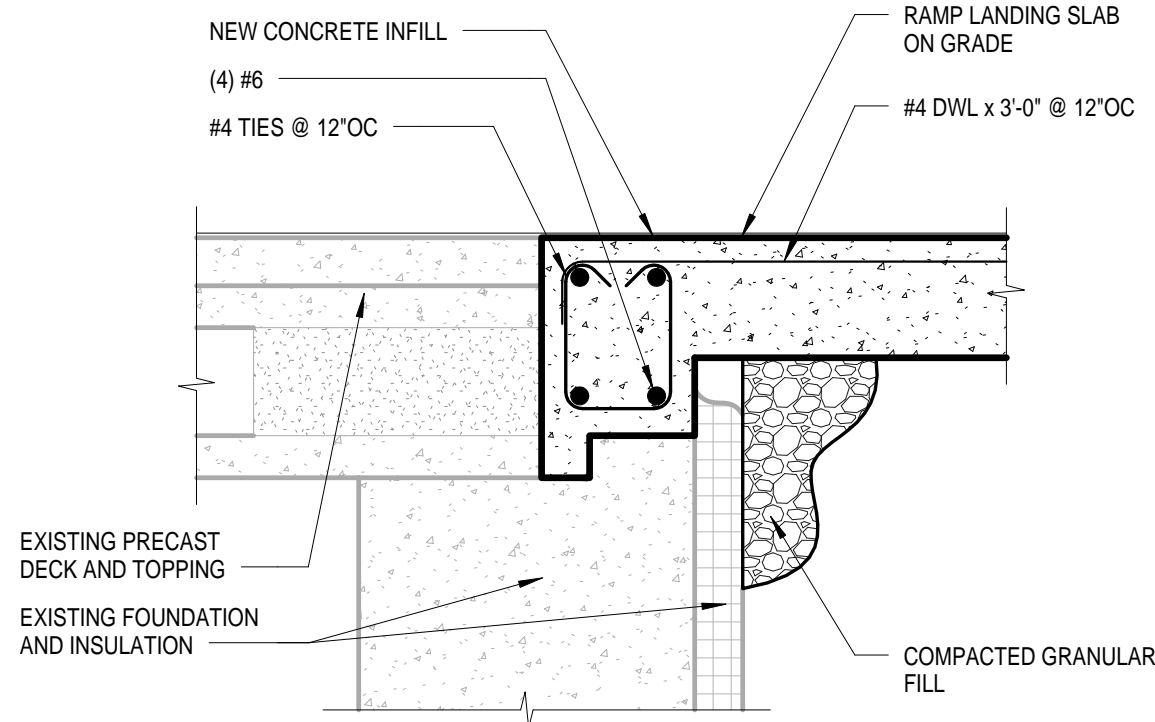
1 SECTION @ EXISTING STEAM TUNNEL
1/2" = 1'-0"



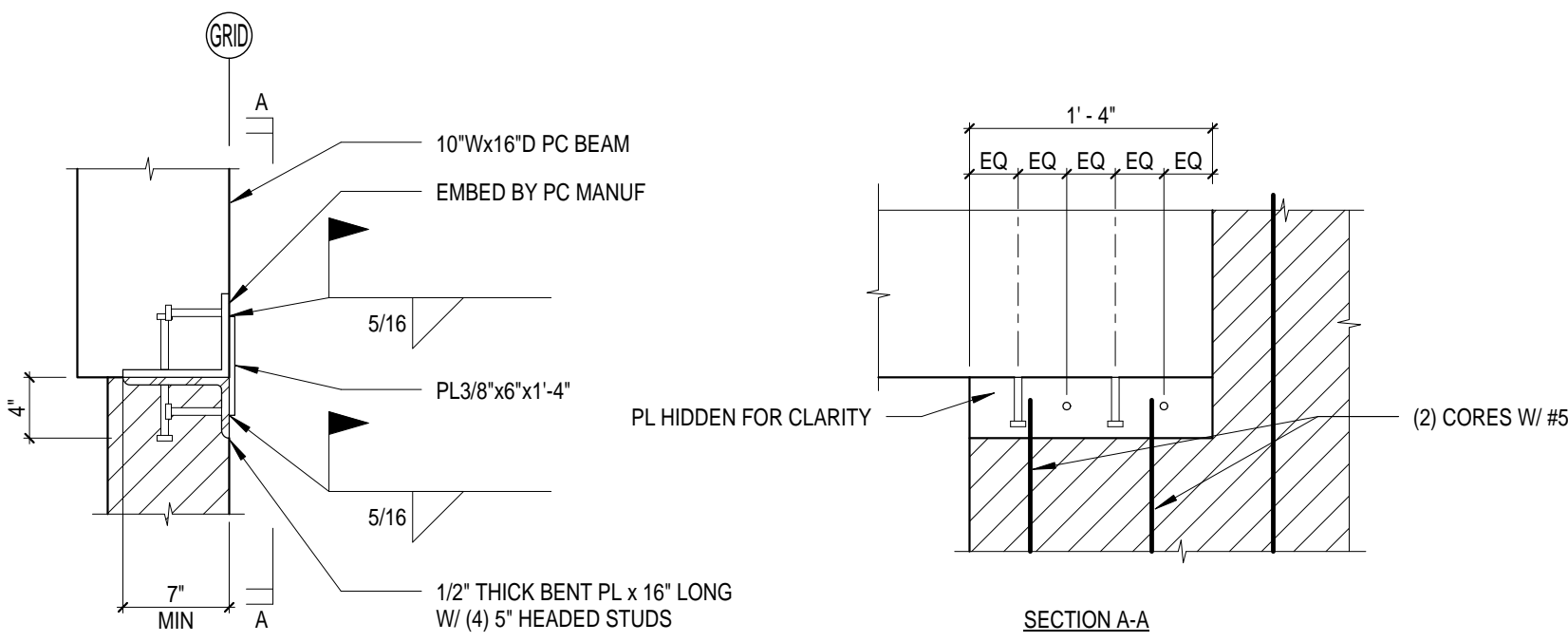
2 S9-2
3/4" = 1'-0"



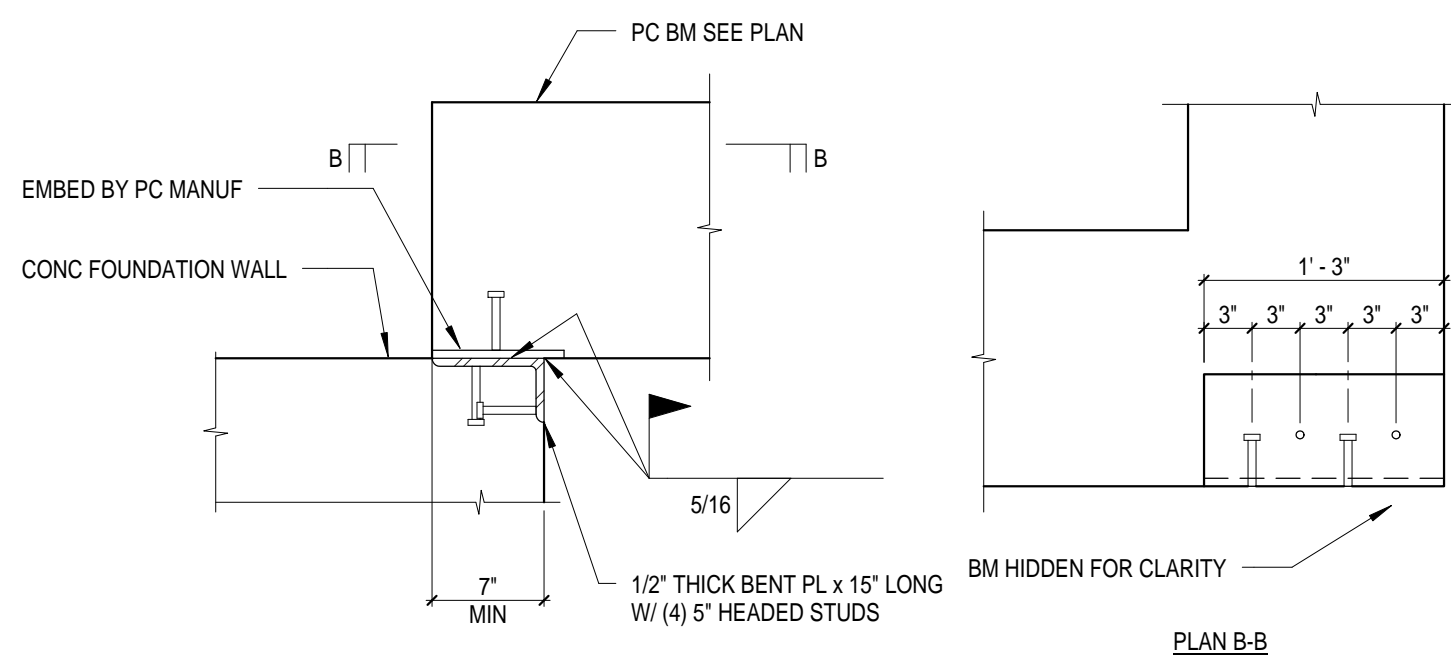
3 PRECAST BM OVER MECH LOUVERS
1/2" = 1'-0"



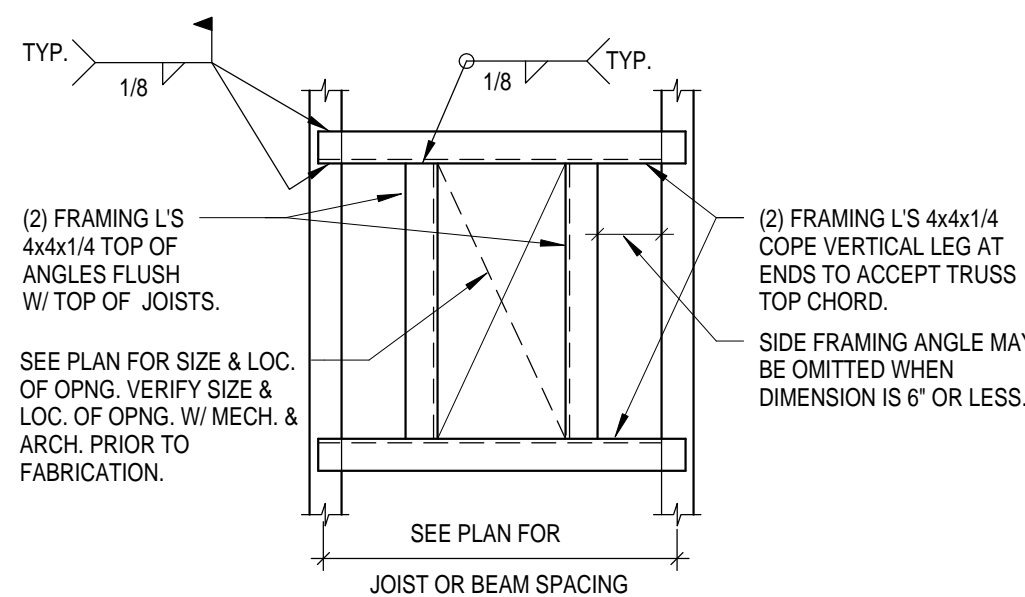
4 CONNECTION LINK FLOOR AT BUILDING #111
1 1/2" = 1'-0"



5 PRECAST BM OVER MECH LOUVERS
1" = 1'-0"



6 PRECAST BM OVER MECH LOUVERS
1" = 1'-0"



7 TYPICAL ROOF OPENING SUPPORT FRAME
3/4" = 1'-0"