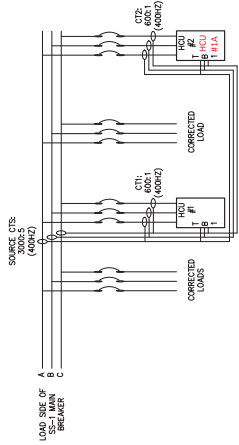
[illegible]

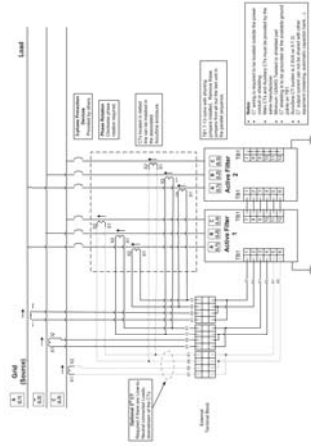
1

HARMONICS NOTES

HARMONICS NOTES



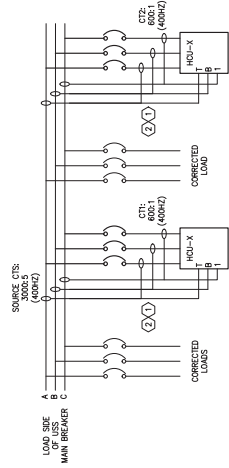
1 **DIAGRAM - HCU #1 INSTALLATION**



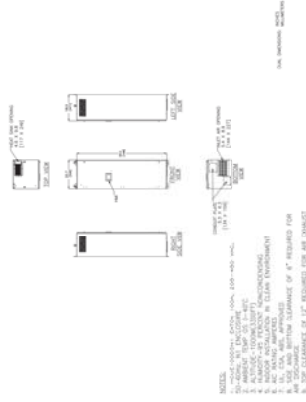
2 **DIAGRAM - EATON HCU #1 GRID (SOURCE) SIDE CT POSITION PARALLEL UNITS**
SCALE: NTS

EQUIPMENT AND SERVICES PROVIDED BY EATON ENGINEERING SERVICES ON 3 DEC 2008:

- 1 - 300A HARMONIC CORRECTION UNIT, 480V
- 1 - 400A HARMONIC CORRECTION UNIT, 480V
- 1 - 600A HARMONIC CORRECTION UNIT, 480V
- 1 - SET OF CABLE TIE RODS FOR INPUT TO HOUSE START-UP SERVICE INCLUDING 6-MONTH FOLLOW-UP FOR HOUSE
- 2 - 400A FRAME MOLDED CASE CIRCUIT BREAKERS WITH MICROPROCESSOR BASED TRIP UNITS: ONE WITH 400A TRIP, ONE WITH 150A TRIP. INCLUDES ALL MOUNTING HARDWARE, COPPER STRAPS AND DEADFRONT COVERS.
- 1 - SET UP AND PROGRAMMING FOR HARMONIC MONITORING



3 **DIAGRAM - TYPICAL HCU-2/3/4 INSTALLATION**
SCALE: NONE



4 DETAIL - HARMONIC CORRECTION UNIT (HCU) 2/3/4 100A, 208-480V
SCALE: NTS

[illegible]

CONSULTANTS:



ARCHITECT/ENGINEERS:

[illegible]

RECORD DRAWINGS

DRAWING CREATION PENDING

CONSULTANTS:		ARCHITECT/ENGINEERS:		RECORD DRAWINGS	
				Project File	
				Emergency Power Circuit Generator Power One-Line	
				Project Number 757	
				Building Number 1A	
				Drawing Number E-EPL	
				Sheet 5 of 9	
				Location CHALLENGER - WHEE IN AMBULATORY CARE CENTER	
				Checked By PJH	
				Date 2017-10-19	
				Approved FARID MEHR, PE CHIEF, ENGINEERING SERVICE	
				Philip J. Heinrich Professional Engineer 083343	
				RECORD DRAWING CREATED 2017-10-19 10:00	
				Columbus VA VA Department of Defense	

DRAWING CREATION PENDING

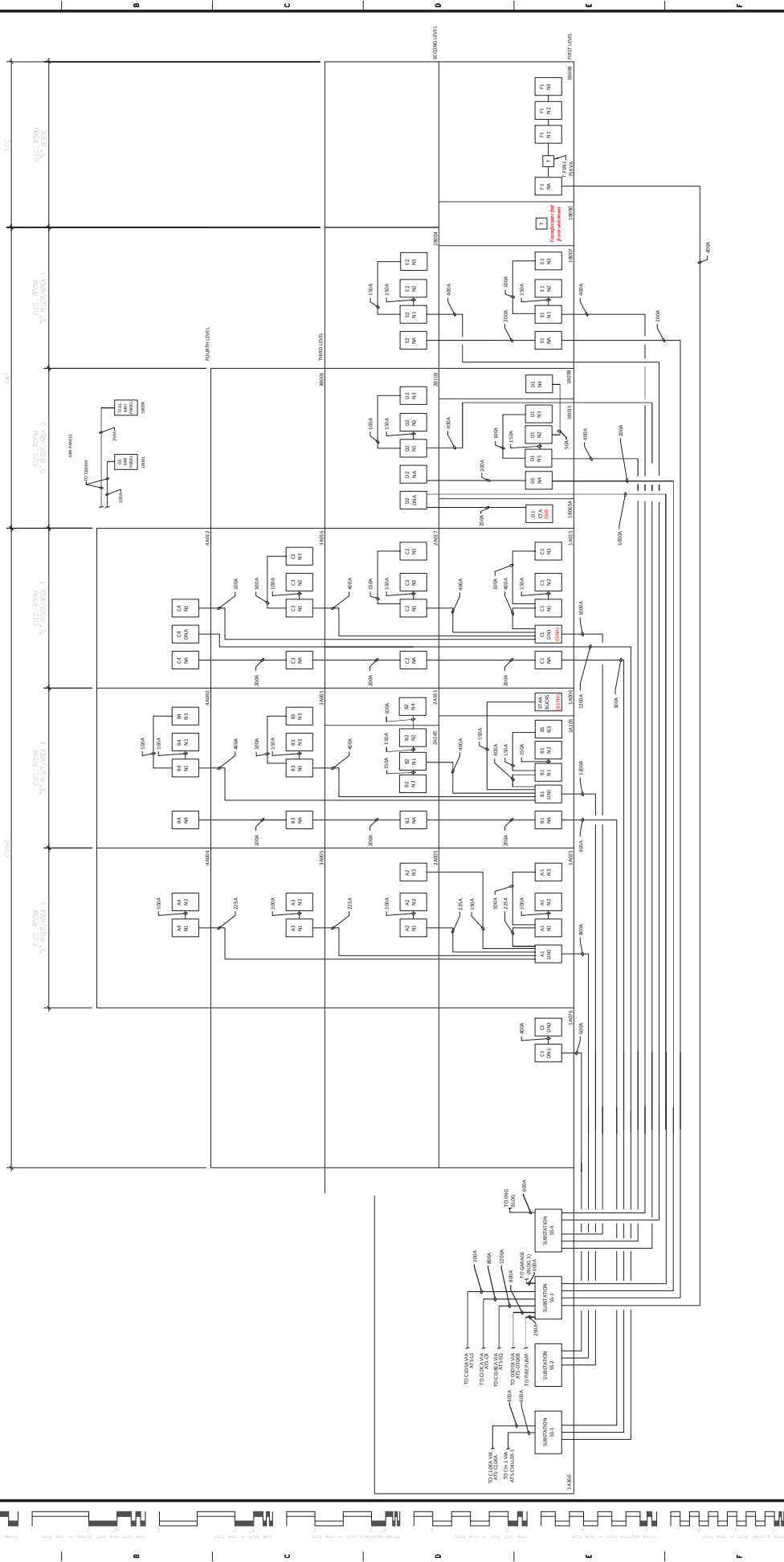
CONSULTANTS:		ARCHITECT/ENGINEERS:		RECORD DRAWINGS	
Project Title		Project Title		Project Title	
Emergency Power Circuit Distribution Panels One-Line		Emergency Power Circuit Distribution Panels One-Line		Emergency Power Circuit Distribution Panels One-Line	
Approval:		Approval:		Approval:	
FARID MEHR, PE CHIEF, ENGINEERING SERVICE		FARID MEHR, PE CHIEF, ENGINEERING SERVICE		FARID MEHR, PE CHIEF, ENGINEERING SERVICE	
Location		Location		Location	
CHALLENGER - WHEE IN AMBULATORY CARE CENTER		CHALLENGER - WHEE IN AMBULATORY CARE CENTER		CHALLENGER - WHEE IN AMBULATORY CARE CENTER	
Date		Date		Date	
2017-10-19		2017-10-19		2017-10-19	
Drawn By:		Drawn By:		Drawn By:	
PJH		PJH		PJH	
Checked By:		Checked By:		Checked By:	
PJH		PJH		PJH	
Drawing Number		Drawing Number		Drawing Number	
1A		1A		1A	
Building Number		Building Number		Building Number	
757		757		757	
Sheet of 3		Sheet of 3		Sheet of 3	
E-EPD		E-EPD		E-EPD	
Columbus VA		Columbus VA		Columbus VA	
VA Department of Defense		VA Department of Defense		VA Department of Defense	

Figure 1 illustrates the construction of a complex fractal curve through a sequence of 10 diagrams. Each diagram shows a horizontal line segment being replaced by a more complex path. The diagrams are labeled 1 through 10. Diagram 1 shows a single horizontal segment. Diagram 2 shows a small square bump added to the middle. Diagram 3 shows a more complex path with multiple bumps. Diagram 4 shows the path becoming more intricate. Diagram 5 shows the path becoming even more complex. Diagram 6 shows the path becoming even more complex. Diagram 7 shows the path becoming even more complex. Diagram 8 shows the path becoming even more complex. Diagram 9 shows the path becoming even more complex. Diagram 10 shows the final, highly complex fractal curve.

[illegible][illegible]

RISER NOTES

1. THE ARCHITECT/ENGINEER/CONSULTANT SHALL BE RESPONSIBLE FOR THE DESIGN OF THE RISER SYSTEMS. THE ELECTRICAL ENGINEER/CONSULTANT SHALL BE RESPONSIBLE FOR THE DESIGN OF THE ELECTRICAL RISER SYSTEMS. THE MECHANICAL ENGINEER/CONSULTANT SHALL BE RESPONSIBLE FOR THE DESIGN OF THE MECHANICAL RISER SYSTEMS. THE PLUMBING ENGINEER/CONSULTANT SHALL BE RESPONSIBLE FOR THE DESIGN OF THE PLUMBING RISER SYSTEMS. THE FIRE PROTECTION ENGINEER/CONSULTANT SHALL BE RESPONSIBLE FOR THE DESIGN OF THE FIRE PROTECTION RISER SYSTEMS. THE RECORD DRAWING SHALL BE USED FOR CONSTRUCTION PURPOSES ONLY.



CONSULTANTS:		ARCHITECT/ENGINEERS:		RECORD DRAWINGS	
				Project No. 757	
				Building Number 1A	
				Drawing Number E-NPR	
				Sheet of 3	
				Location CHALMERS-WHITE LABORATORY CASE CENTER	
				Drawn By: P.J.H.	
				Checked By: 2017-10-19	
				Date 2017-10-19	
				Approval: FARID MEHR, PE CHIEF, ENGINEERING SERVICE	
				Stamp: Philip J. Mehr 0833-63	
				RECORD DRAWING CREATED: 2017-10-19	
				Revisions:	

