

DEPARTMENT OF VETERANS AFFAIRS

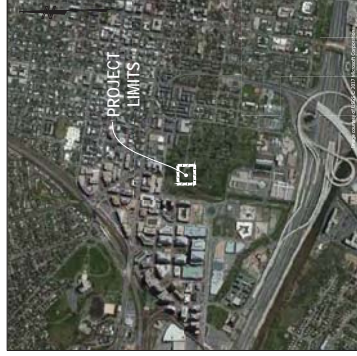


ALEXANDRIA NATIONAL CEMETERY

**CITY OF ALEXANDRIA, VIRGINIA
ROAD, WALKWAY, AND DRAINAGE REPAIRS,
"PACKAGE A"**

PROJECT NUMBER 872-NRM17-10

FINAL CONSTRUCTION DOCUMENTS



LOCAL MAP
SCALE: 1" = 1000'



REGIONAL MAP
SCALE 1" = 1 MILE

DRAWING INDEX

NO.	DRAWING	TITLE
01	G-001	COVER SHEET
02	G-002	GENERAL NOTES
03	G-003	SITE DETAILS
04	QZ-001	EROSION AND SEDIMENT CONTROL NOTES
05	QZ-001	EROSION AND SEDIMENT CONTROL PLAN
06	GZ-101	EXISTING CONDITIONS
07	XP-101	SITE PLAN
08	CS-101	SITE PLAN
09	CS-102	STANDARD SPECIFICATIONS

[illegible]

GENERAL NOTES:

- CONSTRUCTION NOTES:**
1. THE CONTRACTOR SHALL BE RESPONSIBLE FOR REVIEWING THE PLANS PRIOR TO CONSTRUCTION AND FOR NOTIFYING THE ARCHITECT IMMEDIATELY UPON DISCOVERY OF ANY APPROPRIATE REVISIONS CAN BE MADE IF WARRANTED.
 2. DEVELOPMENT OF THE SITE ALLOWING CONSTRUCTION AND MATERIAL SHALL BE IN CONFORMANCE WITH U.S. DEPARTMENT OF AGRICULTURE, NATURAL RESOURCES SERVICE, 1984, CHAPTER 15, 15.02, 15.03, 15.04, 15.05, 15.06, 15.07, 15.08, 15.09, 15.10, 15.11, 15.12, 15.13, 15.14, 15.15, 15.16, 15.17, 15.18, 15.19, 15.20, 15.21, 15.22, 15.23, 15.24, 15.25, 15.26, 15.27, 15.28, 15.29, 15.30, 15.31, 15.32, 15.33, 15.34, 15.35, 15.36, 15.37, 15.38, 15.39, 15.40, 15.41, 15.42, 15.43, 15.44, 15.45, 15.46, 15.47, 15.48, 15.49, 15.50, 15.51, 15.52, 15.53, 15.54, 15.55, 15.56, 15.57, 15.58, 15.59, 15.60, 15.61, 15.62, 15.63, 15.64, 15.65, 15.66, 15.67, 15.68, 15.69, 15.70, 15.71, 15.72, 15.73, 15.74, 15.75, 15.76, 15.77, 15.78, 15.79, 15.80, 15.81, 15.82, 15.83, 15.84, 15.85, 15.86, 15.87, 15.88, 15.89, 15.90, 15.91, 15.92, 15.93, 15.94, 15.95, 15.96, 15.97, 15.98, 15.99, 16.00, 16.01, 16.02, 16.03, 16.04, 16.05, 16.06, 16.07, 16.08, 16.09, 16.10, 16.11, 16.12, 16.13, 16.14, 16.15, 16.16, 16.17, 16.18, 16.19, 16.20, 16.21, 16.22, 16.23, 16.24, 16.25, 16.26, 16.27, 16.28, 16.29, 16.30, 16.31, 16.32, 16.33, 16.34, 16.35, 16.36, 16.37, 16.38, 16.39, 16.40, 16.41, 16.42, 16.43, 16.44, 16.45, 16.46, 16.47, 16.48, 16.49, 16.50, 16.51, 16.52, 16.53, 16.54, 16.55, 16.56, 16.57, 16.58, 16.59, 16.60, 16.61, 16.62, 16.63, 16.64, 16.65, 16.66, 16.67, 16.68, 16.69, 16.70, 16.71, 16.72, 16.73, 16.74, 16.75, 16.76, 16.77, 16.78, 16.79, 16.80, 16.81, 16.82, 16.83, 16.84, 16.85, 16.86, 16.87, 16.88, 16.89, 16.90, 16.91, 16.92, 16.93, 16.94, 16.95, 16.96, 16.97, 16.98, 16.99, 17.00, 17.01, 17.02, 17.03, 17.04, 17.05, 17.06, 17.07, 17.08, 17.09, 17.10, 17.11, 17.12, 17.13, 17.14, 17.15, 17.16, 17.17, 17.18, 17.19, 17.20, 17.21, 17.22, 17.23, 17.24, 17.25, 17.26, 17.27, 17.28, 17.29, 17.30, 17.31, 17.32, 17.33, 17.34, 17.35, 17.36, 17.37, 17.38, 17.39, 17.40, 17.41, 17.42, 17.43, 17.44, 17.45, 17.46, 17.47, 17.48, 17.49, 17.50, 17.51, 17.52, 17.53, 17.54, 17.55, 17.56, 17.57, 17.58, 17.59, 17.60, 17.61, 17.62, 17.63, 17.64, 17.65, 17.66, 17.67, 17.68, 17.69, 17.70, 17.71, 17.72, 17.73, 17.74, 17.75, 17.76, 17.77, 17.78, 17.79, 17.80, 17.81, 17.82, 17.83, 17.84, 17.85, 17.86, 17.87, 17.88, 17.89, 17.90, 17.91, 17.92, 17.93, 17.94, 17.95, 17.96, 17.97, 17.98, 17.99, 18.00, 18.01, 18.02, 18.03, 18.04, 18.05, 18.06, 18.07, 18.08, 18.09, 18.10, 18.11, 18.12, 18.13, 18.14, 18.15, 18.16, 18.17, 18.18, 18.19, 18.20, 18.21, 18.22, 18.23, 18.24, 18.25, 18.26, 18.27, 18.28, 18.29, 18.30, 18.31, 18.32, 18.33, 18.34, 18.35, 18.36, 18.37, 18.38, 18.39, 18.40, 18.41, 18.42, 18.43, 18.44, 18.45, 18.46, 18.47, 18.48, 18.49, 18.50, 18.51, 18.52, 18.53, 18.54, 18.55, 18.56, 18.57, 18.58, 18.59, 18.60, 18.61, 18.62, 18.63, 18.64, 18.65, 18.66, 18.67, 18.68, 18.69, 18.70, 18.71, 18.72, 18.73, 18.74, 18.75, 18.76, 18.77, 18.78, 18.79, 18.80, 18.81, 18.82, 18.83, 18.84, 18.85, 18.86, 18.87, 18.88, 18.89, 18.90, 18.91, 18.92, 18.93, 18.94, 18.95, 18.96, 18.97, 18.98, 18.99, 19.00, 19.01, 19.02, 19.03, 19.04, 19.05, 19.06, 19.07, 19.08, 19.09, 19.10, 19.11, 19.12, 19.13, 19.14, 19.15, 19.16, 19.17, 19.18, 19.19, 19.20, 19.21, 19.22, 19.23, 19.24, 19.25, 19.26, 19.27, 19.28, 19.29, 19.30, 19.31, 19.32, 19.33, 19.34, 19.35, 19.36, 19.37, 19.38, 19.39, 19.40, 19.41, 19.42, 19.43, 19.44, 19.45, 19.46, 19.47, 19.48, 19.49, 19.50, 19.51, 19.52, 19.53, 19.54, 19.55, 19.56, 19.57, 19.58, 19.59, 19.60, 19.61, 19.62, 19.63, 19.64, 19.65, 19.66, 19.67, 19.68, 19.69, 19.70, 19.71, 19.72, 19.73, 19.74, 19.75, 19.76, 19.77, 19.78, 19.79, 19.80, 19.81, 19.82, 19.83, 19.84, 19.85, 19.86, 19.87, 19.88, 19.89, 19.90, 19.91, 19.92, 19.93, 19.94, 19.95, 19.96, 19.97, 19.98, 19.99, 20.00, 20.01, 20.02, 20.03, 20.04, 20.05, 20.06, 20.07, 20.08, 20.09, 20.10, 20.11, 20.12, 20.13, 20.14, 20.15, 20.16, 20.17, 20.18, 20.19, 20.20, 20.21, 20.22, 20.23, 20.24, 20.25, 20.26, 20.27, 20.28, 20.29, 20.30, 20.31, 20.32, 20.33, 20.34, 20.35, 20.36, 20.37, 20.38, 20.39, 20.40, 20.41, 20.42, 20.43, 20.44, 20.45, 20.46, 20.47, 20.48, 20.49, 20.50, 20.51, 20.52, 20.53, 20.54, 20.55, 20.56, 20.57, 20.58, 20.59, 20.60, 20.61, 20.62, 20.63, 20.64, 20.65, 20.66, 20.67, 20.68, 20.69,

6. THE CONTRACTOR SHALL PROVIDE ADEQUATE MEANS OF CLEANING TRUCKS AND/OR EQUIPMENT OF MUD AND DEBRIS, PRIOR TO ENTERING PAVED AREAS. IT IS THE CONTRACTOR'S RESPONSIBILITY TO CLEAN STREETS OF MUD AND/OR LAYING DUST AND TO TAKE

 Gordon <small>ENGINEERING</small> 3013 N. Midland Street, Suite 1 Charleston, WV 25414 Phone: 304-725-8656 Fax: 304-725-8657 www.gordoneng.com	ARCHITECT/ENGINEER OF	
	CONSULTANT	
PROJECT:	DATE:	

ARCHITECT/ENGINEER OF

RECORD

ENGINEERING
PLANNING AND
LANDSCAPE
ARCHITECTURE
SURVEYING
AND MAPPING
CONSULTING

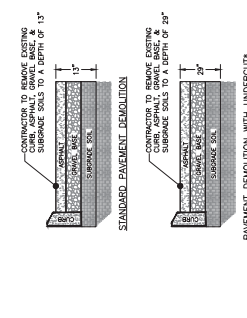
GENERAL NOT

--	--

CEMETERY SITE IMPROVEMENT IS PACKAGE A

	Drawing Number	GI-002	Dwg. 02 of 10
--	----------------	--------	---------------

LOW	LOWEST OR GUT OFF WHITE



D1 PAVEMENT DEMOLITION DETAILS
NTS

CONTRACTOR TO REMOVE EXISTING SURFACE SOILS TO A DEPTH OF 15"

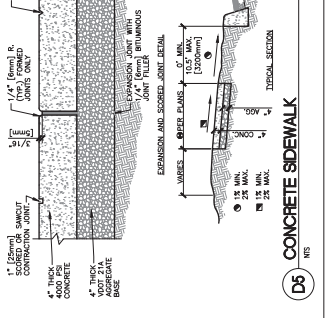
CONTRACTOR TO REMOVE EXISTING SURFACE SOILS TO A DEPTH OF 30"

D2 PAVEMENT SECTION DETAILS
NTS

STANDARD PAVEMENT SECTION

CONTRACTOR TO REMOVE EXISTING SURFACE SOILS TO A DEPTH OF 15"

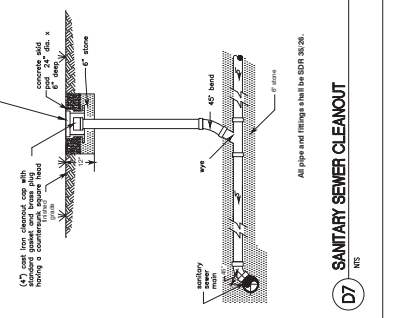
CONTRACTOR TO REMOVE EXISTING SURFACE SOILS TO A DEPTH OF 30"



D3 CONCRETE SIDEWALK
NTS

CONTRACTOR TO REMOVE EXISTING SURFACE SOILS TO A DEPTH OF 15"

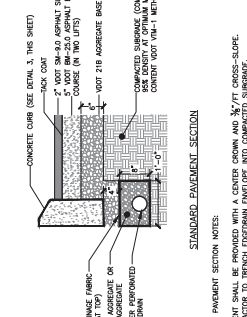
CONTRACTOR TO REMOVE EXISTING SURFACE SOILS TO A DEPTH OF 30"



D4 MOUNTABLE CONCRETE CURB AND GUTTER
NTS

CONTRACTOR TO REMOVE EXISTING SURFACE SOILS TO A DEPTH OF 15"

CONTRACTOR TO REMOVE EXISTING SURFACE SOILS TO A DEPTH OF 30"



D5 CONCRETE SIDEWALK
NTS

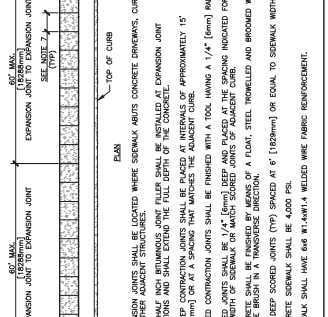
CONTRACTOR TO REMOVE EXISTING SURFACE SOILS TO A DEPTH OF 15"

CONTRACTOR TO REMOVE EXISTING SURFACE SOILS TO A DEPTH OF 30"

D6 VDOT STANDARD ENDWALL EW-1
NTS

CONTRACTOR TO REMOVE EXISTING SURFACE SOILS TO A DEPTH OF 15"

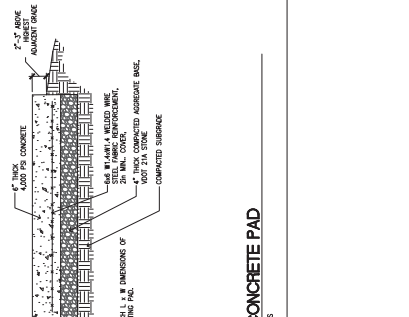
CONTRACTOR TO REMOVE EXISTING SURFACE SOILS TO A DEPTH OF 30"



D7 SANITARY SEWER CLEANOUT
NTS

CONTRACTOR TO REMOVE EXISTING SURFACE SOILS TO A DEPTH OF 15"

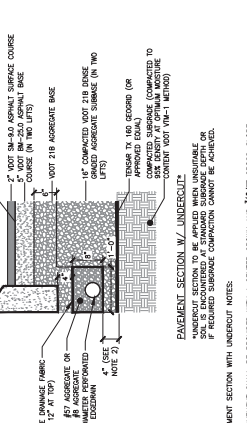
CONTRACTOR TO REMOVE EXISTING SURFACE SOILS TO A DEPTH OF 30"



D8 CONCRETE PAD
NTS

CONTRACTOR TO REMOVE EXISTING SURFACE SOILS TO A DEPTH OF 15"

CONTRACTOR TO REMOVE EXISTING SURFACE SOILS TO A DEPTH OF 30"



D9 CONCRETE CURB AND GUTTER
NTS

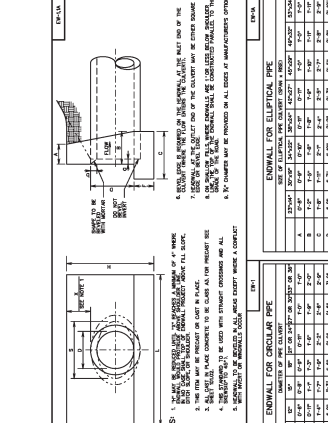
CONTRACTOR TO REMOVE EXISTING SURFACE SOILS TO A DEPTH OF 15"

CONTRACTOR TO REMOVE EXISTING SURFACE SOILS TO A DEPTH OF 30"

D10 VDOT STANDARD DROP INLET D-I
NTS

CONTRACTOR TO REMOVE EXISTING SURFACE SOILS TO A DEPTH OF 15"

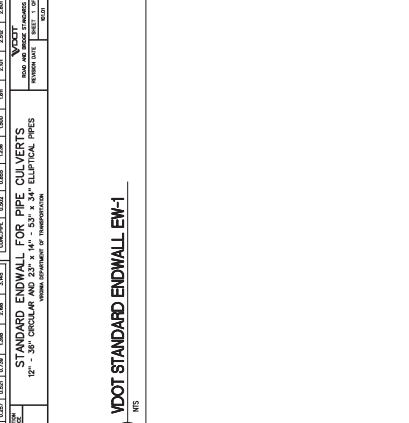
CONTRACTOR TO REMOVE EXISTING SURFACE SOILS TO A DEPTH OF 30"



D11 CONCRETE SIDEWALK
NTS

CONTRACTOR TO REMOVE EXISTING SURFACE SOILS TO A DEPTH OF 15"

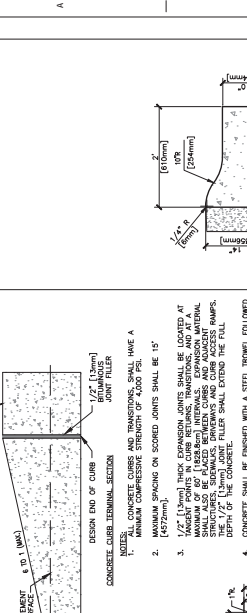
CONTRACTOR TO REMOVE EXISTING SURFACE SOILS TO A DEPTH OF 30"



D12 CONCRETE SIDEWALK
NTS

CONTRACTOR TO REMOVE EXISTING SURFACE SOILS TO A DEPTH OF 15"

CONTRACTOR TO REMOVE EXISTING SURFACE SOILS TO A DEPTH OF 30"



D13 CONCRETE SIDEWALK
NTS

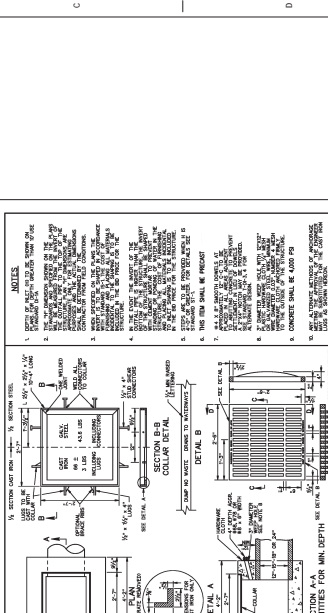
CONTRACTOR TO REMOVE EXISTING SURFACE SOILS TO A DEPTH OF 15"

CONTRACTOR TO REMOVE EXISTING SURFACE SOILS TO A DEPTH OF 30"

D14 MOUNTABLE CONCRETE CURB AND GUTTER
NTS

CONTRACTOR TO REMOVE EXISTING SURFACE SOILS TO A DEPTH OF 15"

CONTRACTOR TO REMOVE EXISTING SURFACE SOILS TO A DEPTH OF 30"



D15 CONCRETE SIDEWALK
NTS

CONTRACTOR TO REMOVE EXISTING SURFACE SOILS TO A DEPTH OF 15"

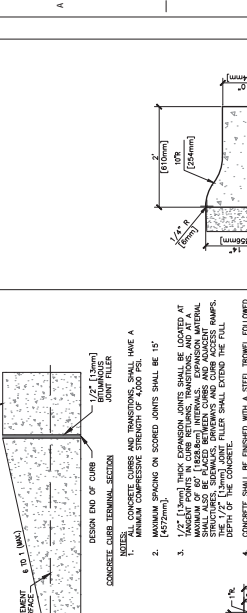
CONTRACTOR TO REMOVE EXISTING SURFACE SOILS TO A DEPTH OF 30"



D16 VDOT STANDARD DROP INLET D-I
NTS

CONTRACTOR TO REMOVE EXISTING SURFACE SOILS TO A DEPTH OF 15"

CONTRACTOR TO REMOVE EXISTING SURFACE SOILS TO A DEPTH OF 30"



D17 SANITARY SEWER CLEANOUT
NTS

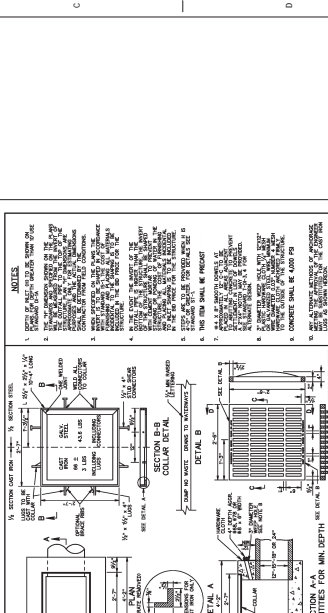
CONTRACTOR TO REMOVE EXISTING SURFACE SOILS TO A DEPTH OF 15"

CONTRACTOR TO REMOVE EXISTING SURFACE SOILS TO A DEPTH OF 30"

D18 CONCRETE PAD
NTS

CONTRACTOR TO REMOVE EXISTING SURFACE SOILS TO A DEPTH OF 15"

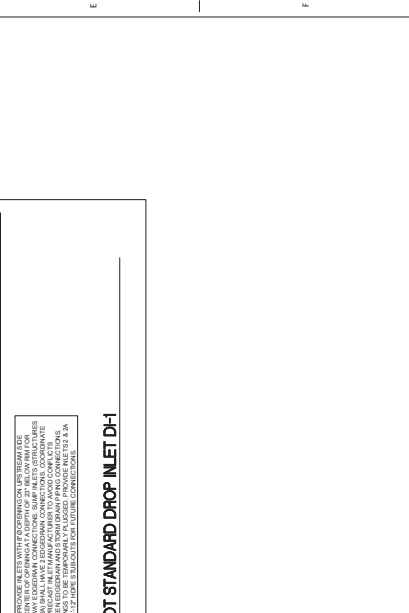
CONTRACTOR TO REMOVE EXISTING SURFACE SOILS TO A DEPTH OF 30"



D19 CONCRETE SIDEWALK
NTS

CONTRACTOR TO REMOVE EXISTING SURFACE SOILS TO A DEPTH OF 15"

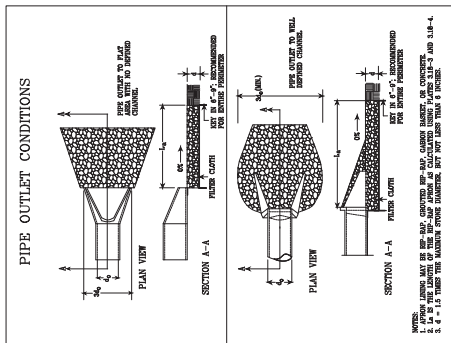
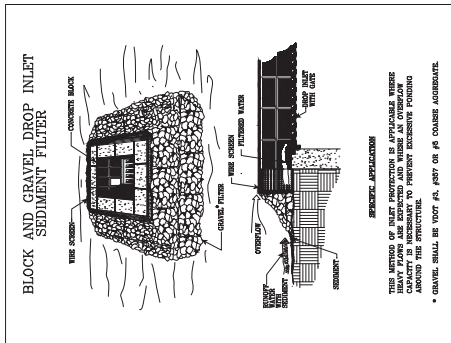
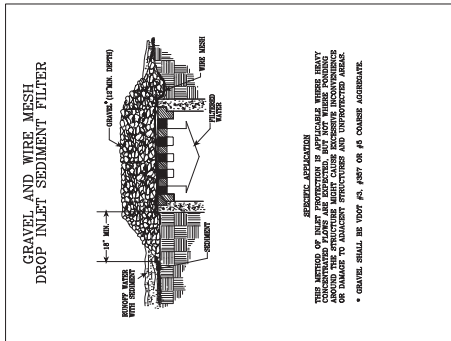
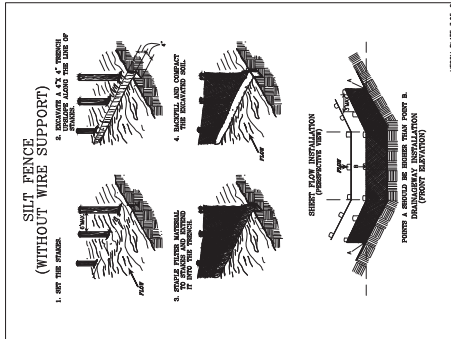
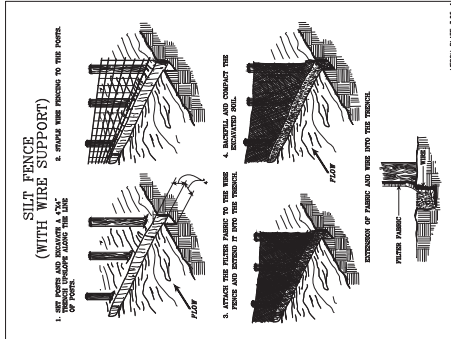
CONTRACTOR TO REMOVE EXISTING SURFACE SOILS TO A DEPTH OF 30"



D20 CONCRETE SIDEWALK
NTS

CONTRACTOR TO REMOVE EXISTING SURFACE SOILS TO A DEPTH OF 15"

CONTRACTOR TO REMOVE EXISTING SURFACE SOILS TO A DEPTH OF 30"

[illegible]

ARCHITECT/ENGINEER OF RECORD

 **Gordon**

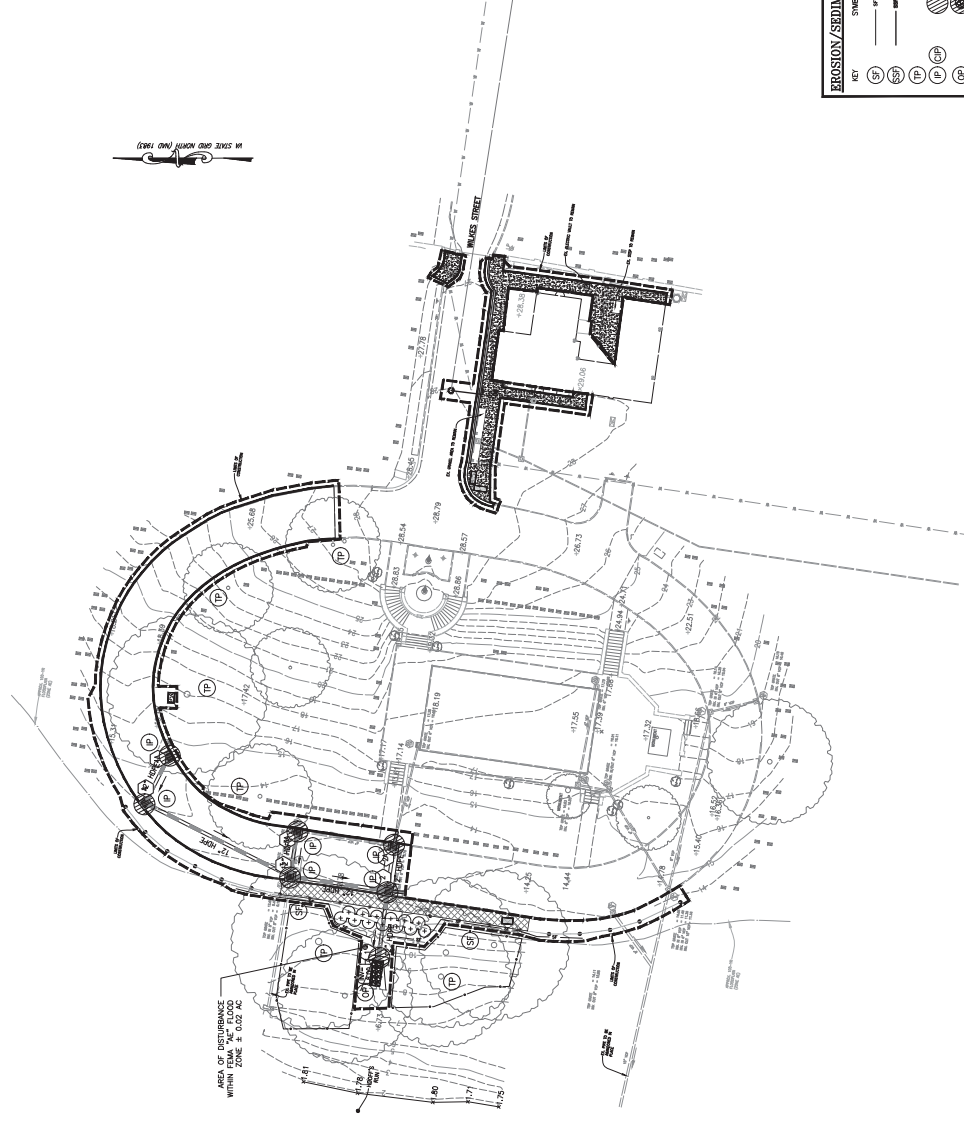
301 N. Mildred Street, Suite 1
Charles Town, WV 25814
Phone: 304-725-8656
www.gordon-us.com

PROGRAMMING AND PLANNING
CIVIL ENGINEERING
LANDSCAPE ARCHITECTURE
SURVEY AND MAPPING
SECURITY CONSULTING

Office of
Construction
and Facilities
Management

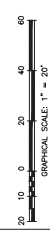
Drawing Title	EROSION AND SEDIMENT CONTROL DETAILS
Approved	Project Director

Final Construction Documents Submission	Project Title: ALEXANDRIA NATIONAL CEMETERY SITE IMPROVEMENTS PACKAGE A	Project Number: 872-ANMT7-10
		Bidding Number: -
	Location: CITY OF ALEXANDRIA, VIRGINIA	Grantee Number: GC-501
	Start Date: September 19, 2017	Drawn By: BSP
	Checked: KMS	



EROSION/SEDIMENT CONTROL LEGEND	
KEY	DESCRIPTION
(P)	PERMEABLE
(S)	SILT FENCE
(SF)	SUPER SILT FENCE
(T)	TREE PROTECTION
(IP)	INLET PROTECTION
(CP)	CULVERT INLET PROTECTION
(OP)	OUTLET PROTECTION
(L)	LIMIT OF CONSTRUCTION
(D)	DRAINAGE DITCH

NOTE: ALL EROSION AND SEDIMENT CONTROLS SHALL REMAIN IN PLACE UNTIL THE PROJECT IS COMPLETE. THE CONTRACTOR SHALL BE RESPONSIBLE FOR MONITORING ALL EROSION AND SEDIMENT CONTROLS AND MAINTAINING THEM THROUGHOUT CONSTRUCTION.



CONSULTANT		ARCHITECT/ENGINEER OF RECORD		STAMP		Office of Construction and Facilities Management		U.S. Department of Veterans Affairs	
Project Title: ALEXANDRIA NATIONAL UNIVERSITY SITE IMPROVEMENTS PACKAGE A		Project Title: EROSION AND SEDIMENT CONTROL PLAN		Project Title: FINAL CONSTRUCTION DOCUMENTS SUBMISSION		Project Title: ALEXANDRIA NATIONAL UNIVERSITY SITE IMPROVEMENTS PACKAGE A		Project Title: ALEXANDRIA NATIONAL UNIVERSITY SITE IMPROVEMENTS PACKAGE A	
Drawing Number: GC-101		Drawing Number: GC-101		Drawing Number: GC-101		Drawing Number: GC-101		Drawing Number: GC-101	
Sheet Title: EROSION AND SEDIMENT CONTROL PLAN		Sheet Title: EROSION AND SEDIMENT CONTROL PLAN		Sheet Title: EROSION AND SEDIMENT CONTROL PLAN		Sheet Title: EROSION AND SEDIMENT CONTROL PLAN		Sheet Title: EROSION AND SEDIMENT CONTROL PLAN	
Date: September 19, 2017		Date: September 19, 2017		Date: September 19, 2017		Date: September 19, 2017		Date: September 19, 2017	
By: [Signature]		By: [Signature]		By: [Signature]		By: [Signature]		By: [Signature]	
Checked: [Signature]		Checked: [Signature]		Checked: [Signature]		Checked: [Signature]		Checked: [Signature]	
Reviewed: [Signature]		Reviewed: [Signature]		Reviewed: [Signature]		Reviewed: [Signature]		Reviewed: [Signature]	

THIS SHEET FOR INFORMATIONAL PURPOSES ONLY

CONSULTANT	ARCHITECT/ENGINEER OF RECORD	STAMP	Office of Construction and Facilities Management U.S. Department of Veterans Affairs	Seal of the U.S. Department of Veterans Affairs	STAMP	ARCHITECT/ENGINEER OF RECORD	CONSULTANT

Gordon
ARCHITECT/ENGINEER OF RECORD
301 N. Market Street, Suite 1
Chapel Hill, NC 27514
www.gordonusa.com



Office of Construction and Facilities Management
U.S. Department of Veterans Affairs

Project Title:
**ALEXANDRIA NATIONAL
CITY SITE IMPROVEMENTS
PACKAGE A**

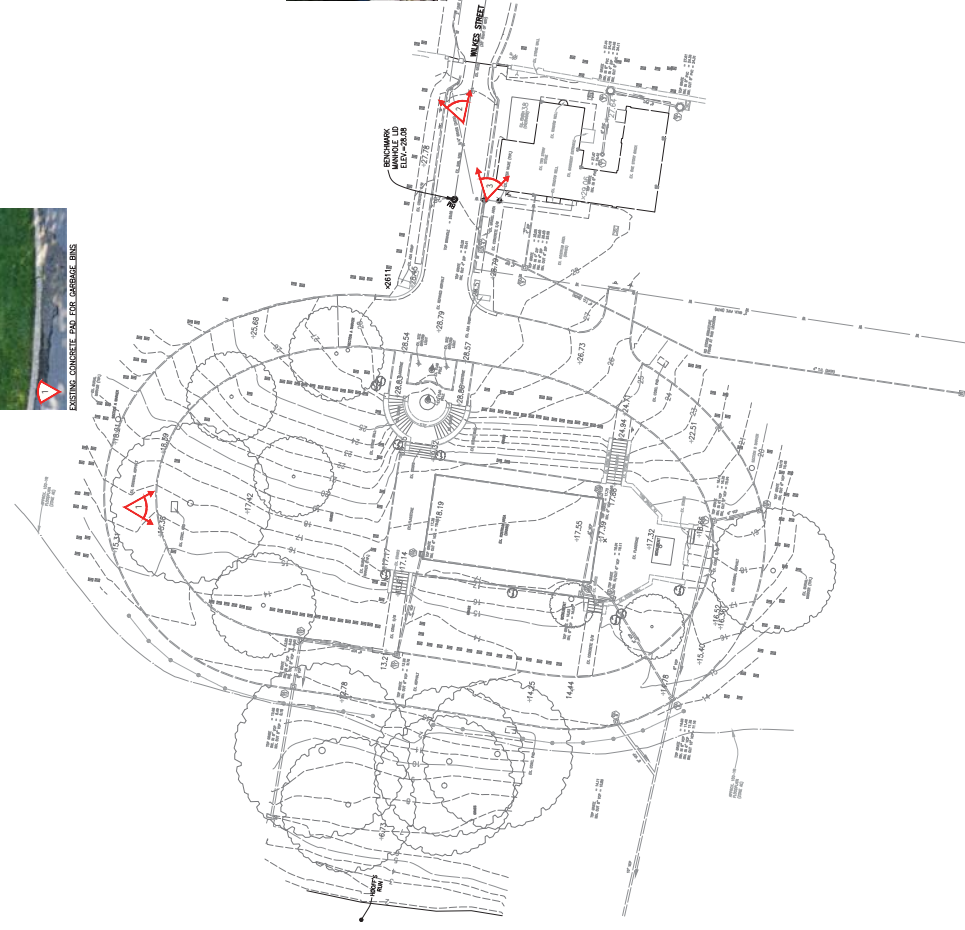
Project No.:
872NRM17-10

Drawing Number:
XP-101

City of Alexandria, Virginia
September 19, 2017



EXISTING CONCRETE CURB & GUTTER



EXISTING CONCRETE CURB & GUTTER



EXISTING CONCRETE CURB & GUTTER



GRAPHICAL SCALE: 1" = 20'

