

DEMOLITION NOTES

- (A) DEMO ACOUSTIC CEILING.
- (B) DEMO WALL, FRAMES DOORS.
- (C) DEMO EVAP SUPPLY GRILL. CAP & FILL CONCRETE STRUCTURE.
- (D) RELOCATE STROBE/SPEAKER:FA & MCOM.
- (E) RELOCATE PULL STATION.
- (F) DEMO FLOORING.
- (G) REMOVE WOOD WINDOW SILL.
- (H) REMOVE MEDIA BOARD. RETURN TO VA.
- (I) RELOCATE DATA/POWER
- (J) EXIT LIGHT TO REMAIN
- (K) MINI-SPLIT AC UNITS TO REMAIN
- (L) REMOVE EXISTING WINDOW.
- (M) REMOVE LAV, CAP WASTE IN CRAWLSPACE. RECONNECT VENTS AS REQUIRED IN CEILING SPACE.
- (N) RELOCATE CIRCUITS AS REQUIRED.
- (O) FIRE SPRINKLERS TO REMAIN.
- (P) REMOVE EXHAUST FAN AND DUCT. SEAL OPENING. DEMO SWITCH & CIRCUIT.
- (Q) REMOVE LIGHT TROFFERS. UTILIZE SINGLE SINGLE CIRCUIT FOR NEW LED FIXTURES.
- (R) REMOVE CORRIDOR WALL FIXTURES.
- (S) VERIFY EGRESS LIGHTING CIRCUIT.
- (T) RELOCATE ALL CENTRAC DEVICES.
- (U) RELOCATE THERMOSTATS.
- (V) REMOVE ANCHOR
- (W) REMOVE TRANSITE BOARD



RESIDENCY GRANT

575-17-05S

DEMOLITION PAGE 2 of 12

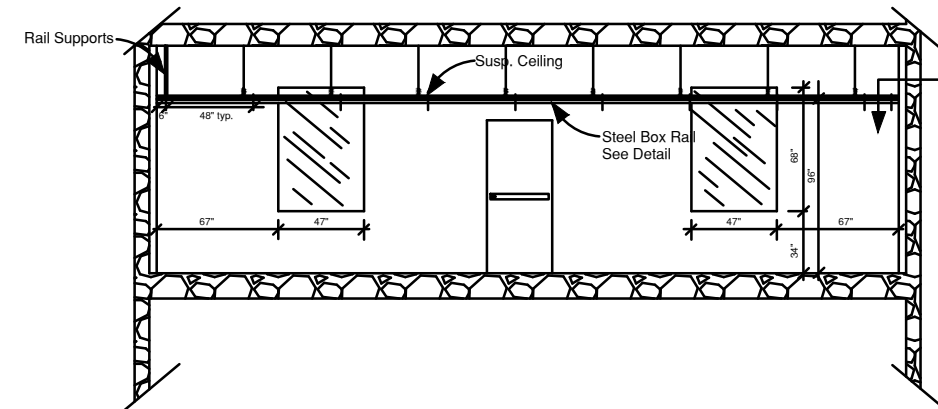
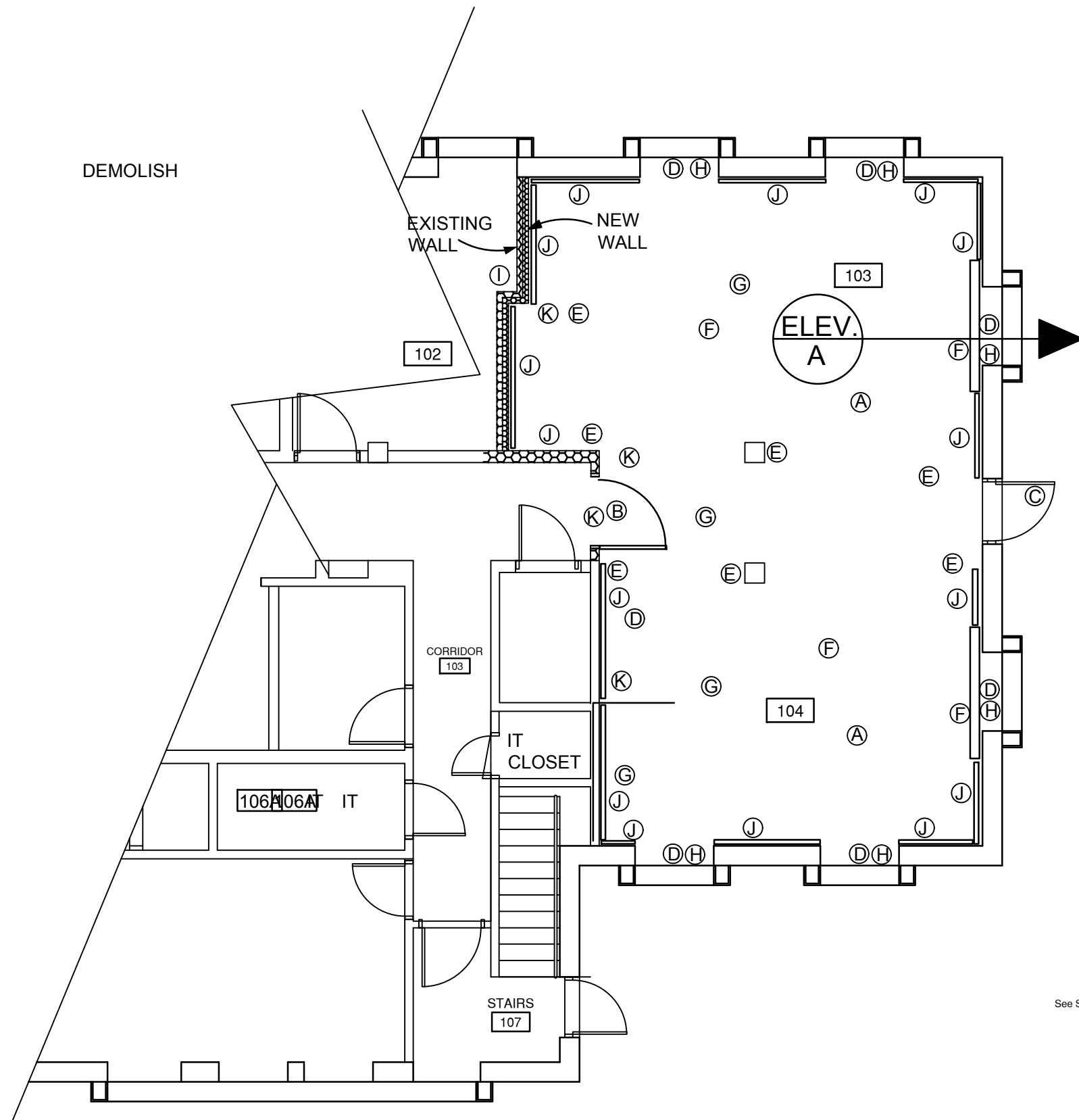
NTS

JHB 5-1-18

ARCHITECTURAL NOTES

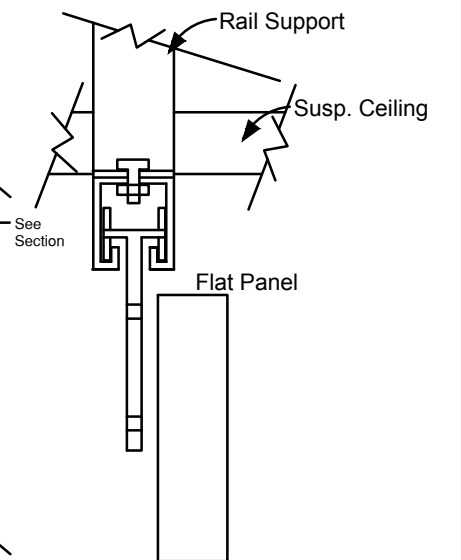
- (A) NEW ACOUSTIC CEILING.
- (B) NEW WALL, FRAME AND DOOR. 3-6x7-0 S.C. CLASSROOM LOCKSET, HOLD OPEN CLOSURE.
- (C) PANIC HARDWARE SET.
- (D) SOLID SURFACE WINDOW SILL.
- (E) PATCH AND PAINT AS ALL INTERIOR AS REQUIRED.
- (F) ELECTRIC OPERATED PROJECTOR SCREEN. FLUSH MOUNT DA-LITE DESIGNER CONTOUR OR APPROVED EQUAL.
- (G) NEW FLOORING. SEE DRWG 12 OF 12.
- (H) NEW BLACK OUT BLINDS. SEE DRWG 12 OF 12.
- (I) HIGH DENSITY SOUND BLANKETS.
- (J) MAGNETIC DRY ERASE BOARD. FIT CORNER TO CORNER. 4'0" WIDE X 6'0" HIGH.
- (K) EXTEND ALL WALLS TO STRUCTURE ABOVE.

DEMOLISH

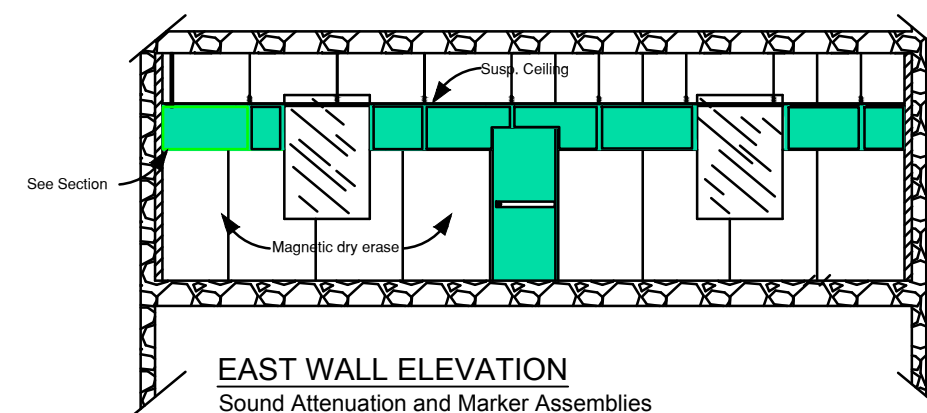


ELEVATION good

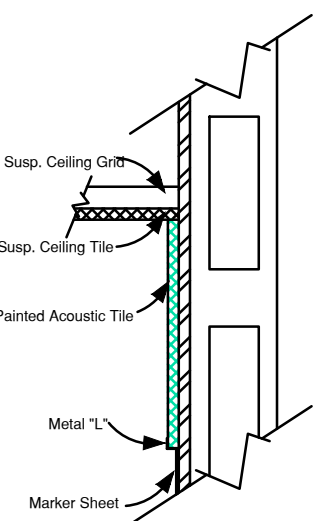
NTS



Flat Panel Section
NTS JHB 5-4-18



Sound Attenuation and Marker Assemblies
NTS JHB 5-4-18



Sound Tile Section
NTS JHB 5-4-18

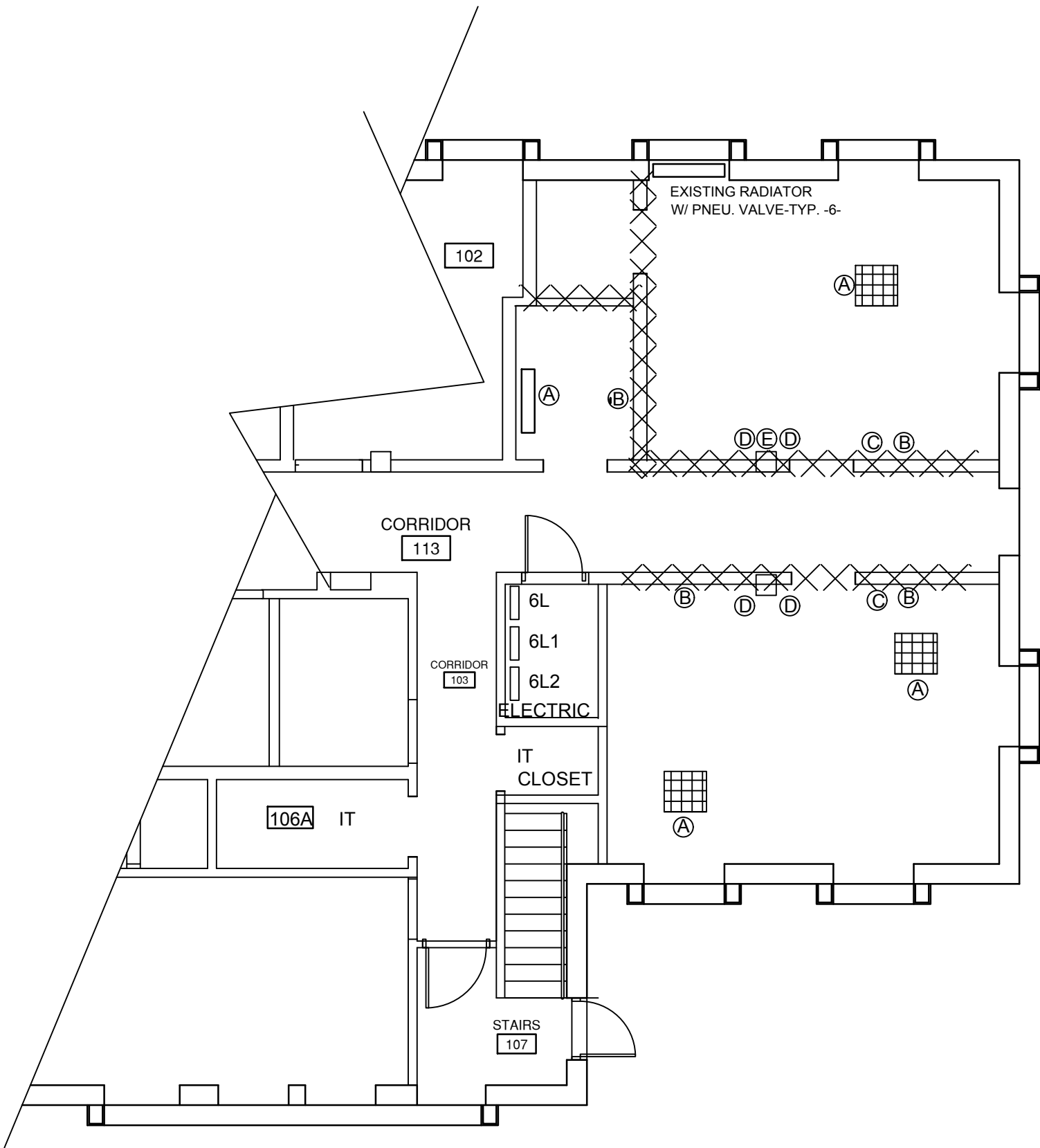
RESIDENCY GRANT

575-17-05S

ARCHITECTURAL PAGE 3 of 12

NTS

JHB 5-1-18



MECHANICAL NOTES

- A REMOVE AND RETAIN -4- FUJITSU AUU36RCLX UNITS. SEE DRWG. 7 OF 9.
- B REMOVE AND RETAIN THERMOSTATS/CONTROL MODULES-MINISPLIT (2).
- C REMOVE AND RELOCATE PNEUMATIC THERMOSTAT.
- D NEW MINI-SPLIT THERMOSTAT LOCATION.
- E PROVIDE SINGLE PNEUMATIC THERMOSTAT FOR -6- EXISTING STEAM RADIATORS.

6L

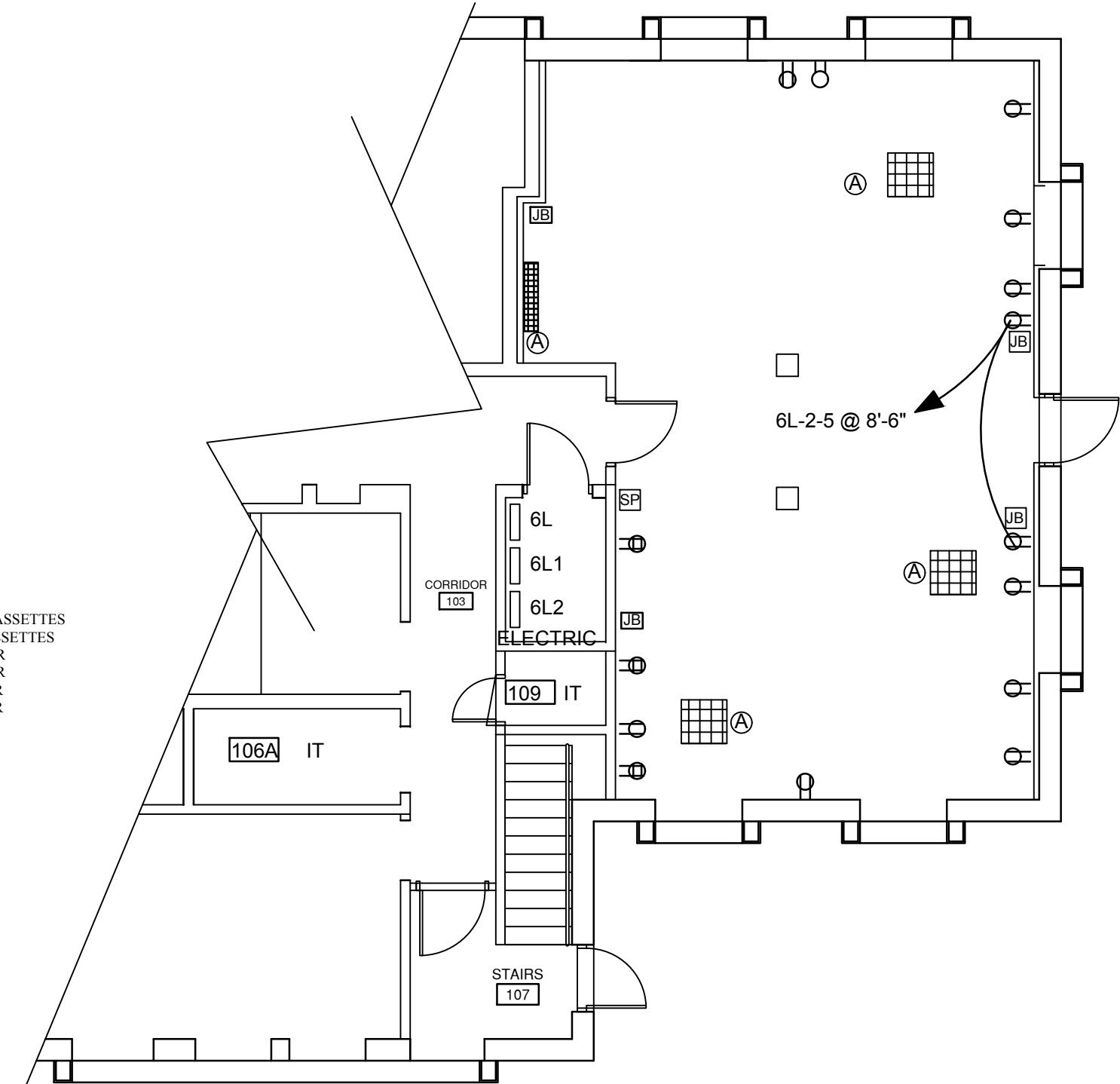
- | | |
|---------------------------------|----------------------|
| 1 LITES OFFICES | 2 RECPT 11 |
| 3 LITES 114 | 4 EWC |
| 5 LITES 115,16A,16B | 6 HC-1 MOTOR |
| 7 RECPT OFFICE | 8 HC-1 MOTOR |
| 9 LITES 115 | 10 HC-2 MOTOR |
| 11 LITES 114,15 | 12 HC-2 MOTOR |
| 13 LITES 117-19,21-22 | 14 HC-3 MOTOR |
| 15 LITES 101,02,02A,EXT | 16 HC-3 MOTOR |
| 17 LITES 104-106,09,13 | 18 HC-4 MOTOR |
| 19 LITES 106A,08,08A,10,11,11A, | 20 HC-4 MOTOR |
| 21 LITES 100 | 22 EC-1 |
| 23 LITES 106,13 | 24 EC-1 |
| 25 LITES BASMENT | 26 CP-1 |
| 27 RECPT 101,02 | 28 CP-1 |
| 29 RECPT 100 | 30 CP-1 |
| 31 RECPT 102A | 32 RECPT 116 |
| 33 RECPT 103,03A | 34 RECPT 115E |
| 35 RECPT 112,12A | 36 RECPT 113 |
| 37 REC 105,06,07,10,11 | 38 RECPT 118 |
| 39 RECPT 108, 08A | 40 RECPT 119,19A |
| 41 RECPT 104,04A | 42 RECPT 120A,21,21A |

6L1

- | | |
|-----------------|-----------------------------|
| 43 SPARE 30A | 44 RECPT |
| 45 SPARE 30A | 46 LITES |
| 47 RECEPT BMT | 48 AIR COMP |
| 49 RECPT OFFICE | 50 RECPT |
| 51 BLANK | 52 EMCSMAT |
| 53 6BP1 60A | 54 DISC HEAT MAT |
| 55 6BP1 60A | 56 SPARE 30A |
| 57 6BP1 60A | 58 MAIN 60A |
| 59 6BP1 60A | 60 MAIN 60A |
| 61 BLANK | 62 MAIN 60A |
| 63 BLANK | 64 BLANK |
| 65 BLANK | 66 BLANK |
| 67 BLANK | 68 BLANK |
| 69 BLANK | 70 BLANK |
| 71 BLANK | 72 BLANK |
| 73 FMS | 74 CONNFERENCE RM CASSETTES |
| 75 ANK | 76 CONFERENCE RM CASSETTES |
| 77N. CONDENSER | 78 N. SMALL CONDENSER |
| 79. CONDENSER | 80 N. SMALL CONDENSER |
| 81S. CONDENSER | 82 S. SMALL CONDENSER |
| 83S.CONDENSER | 84 S. SMALL CONDENSER |

6L2

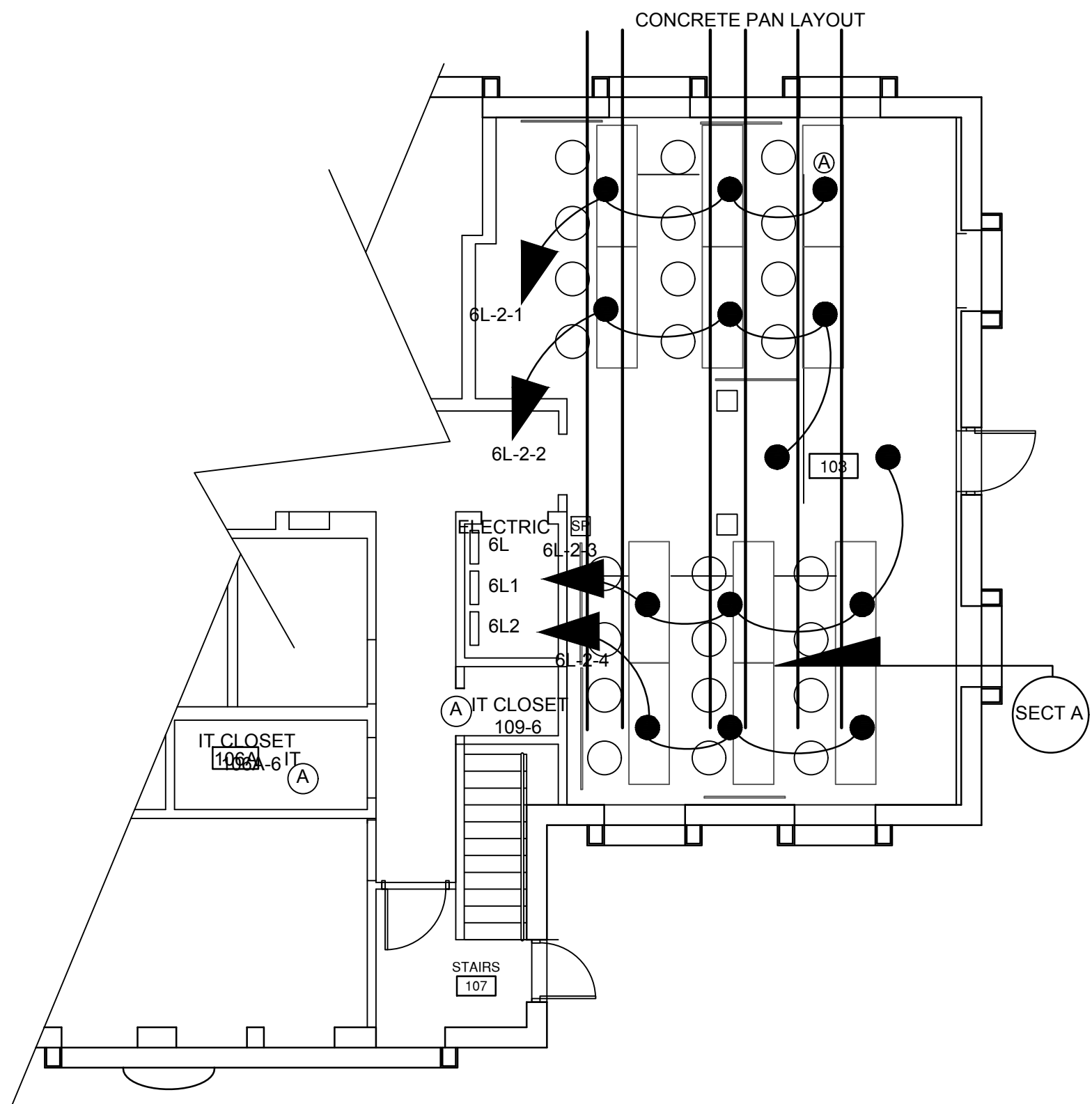
- | | |
|-----------------|----------------------|
| 1 FLR JCK 103 | 2 FLR JCK 103 |
| 3 FLR JCK 103 | 4 FLR JCK 103 |
| 5 BLANK | 6 BLANK |
| 7 BLANK | 8 BLANK |
| 9 BLANK | 10 BLANK |
| 11 BLANK | 12 BLANK |
| 13 BLANK | 14 BLANK |
| 15 BLANK | 16 BLANK |
| 17 BLANK | 18 BLANK |
| 19 SPARE 20A | 20 BLANK |
| 21 SPARE 20A | 22 BLANK |
| 23 SPARE 20A | 24 BLANK |
| 25 SPARE 20A | 26 SPARE 20A |
| 27 SPARE 20A | 28 SPARE 20A |
| 29 SPARE 20A | 30 SPARE 20A |
| 31 SPARE 60A | 32 CONF.RM CASSETTES |
| 33 SPARE 60A | 34 CONF.RM CASSETTES |
| 35 N. CONDENSER | 36 N. SML CONDENSER |
| 37 N. CONDENSER | 38 N. SML CONDENSER |
| 39 S. CONDENSER | 40 S. SML CONDENSER |
| 41 S. CONDENSER | 42 S. SML CONDENSER |



ELECTRICAL NOTES

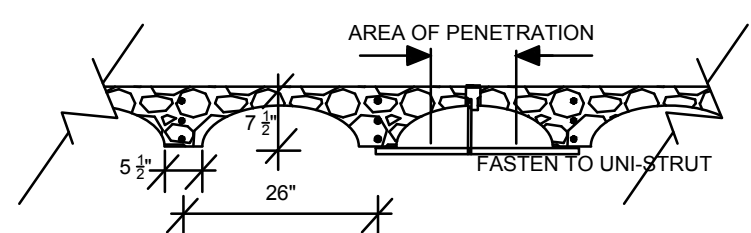
- (A) RECONNECT LINE VOLTAGE.
- (B) PROVIDE CONDUIT/J-BOX @ 48" FOR FLAT PANEL CONTROLS.

NOTE: COORDINATE ALL FLOOR PENETRATIONS. SEE SECTION A, DRAWING NO. 7.



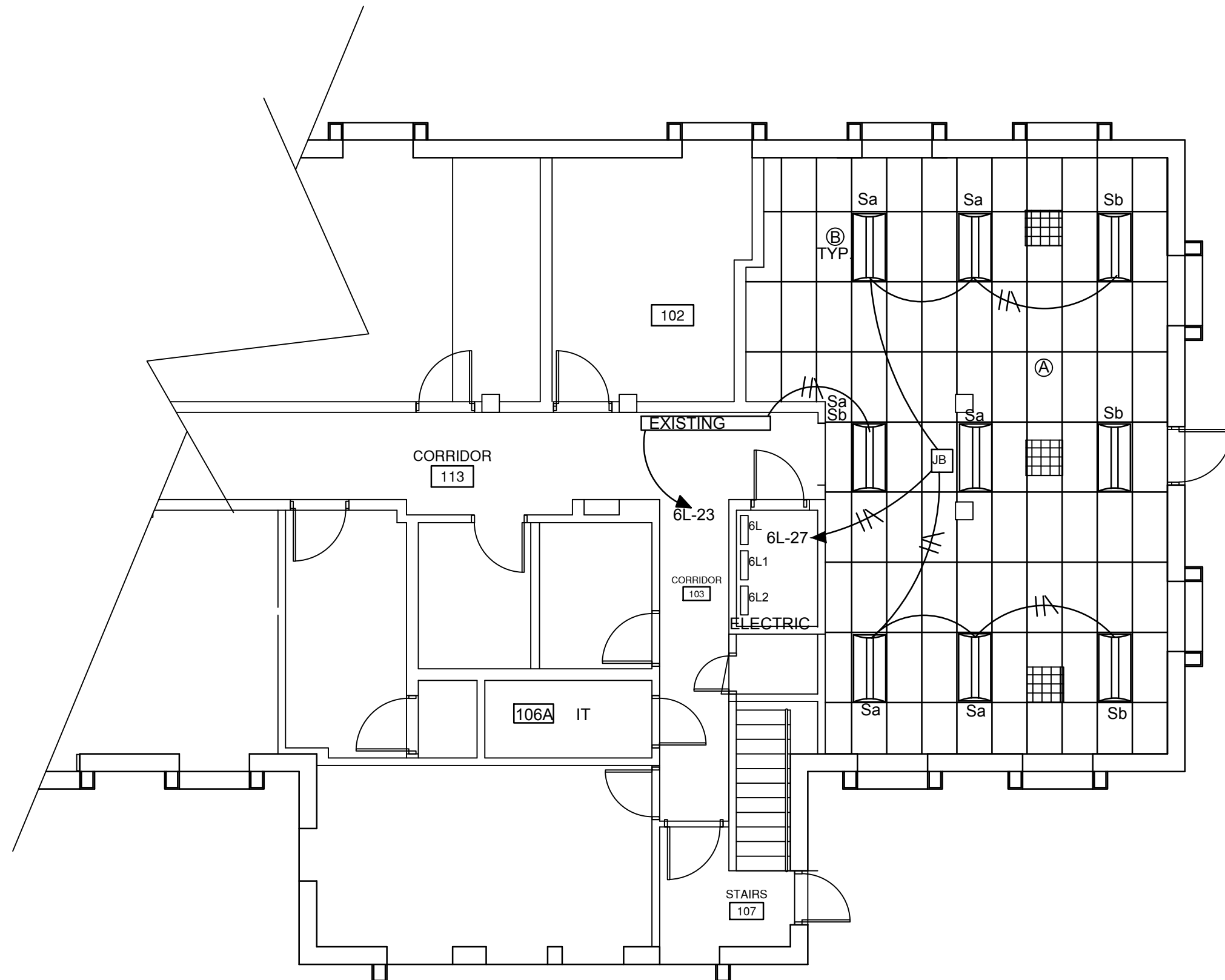
ELECTRICAL NOTES

A Combination power (2) and data (2) floor jack.
 Locate within apex of joist/pan concrete structure.
 See detail.



SECTION A-JOIST/PAN

NTS



REFLECTED CEILING NOTES

- Ⓐ NEW ACOUSTIC CEILING.
- Ⓑ LED LIGHT 2x4 TROFFER/CONTROLS:
2FSL4 EZ1 LP835 N100 OR APP EQUAL
NWSX PDT LV DX-SWITCH/DIMMER.
- Ⓒ CONNECT TO EXISTING EGRESS CIRCUIT.

RESIDENCY GRANT

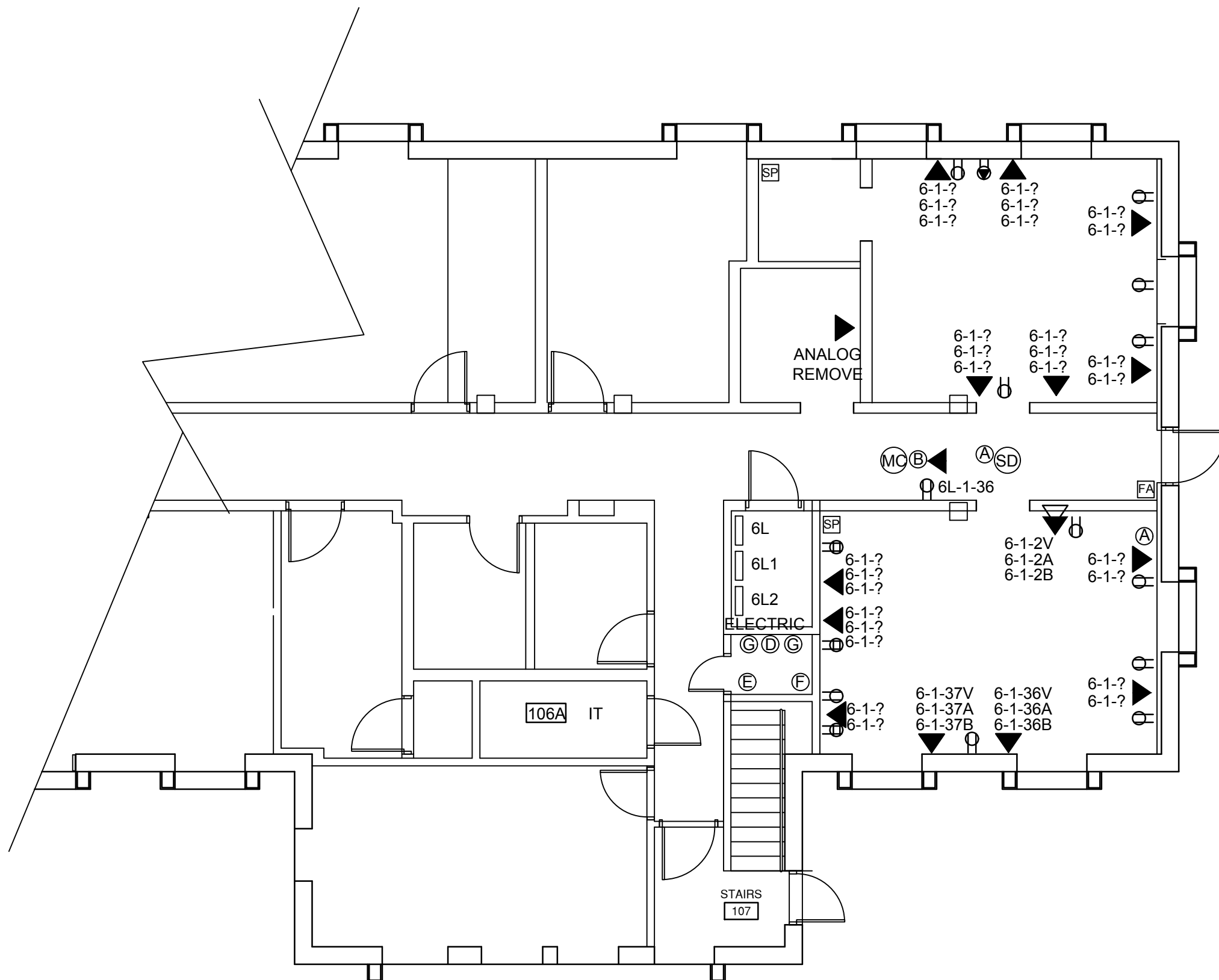
575-17-05S

REFELCTED CEILING

PAGE 8 of 12

NTS

JHB 5-1-18



SPECIAL SYSTEMS NOTES

- A RELOCATE EXISTING FIRE ALARM COMPONENTS.
- B RELOCATE MASS COMM.
- C 2-CAT6e CABLE FROM SERVICE POINT ROOM 106A. TERMINATE.
- D RELOCATE ALL SIGNAL CABLING AND EQUIPMENT FROM 109-6 TO 106A. REMOVE ABANDONED CABLING. TERMINATE AND CERTIFY FUNCTION.
- E JOHNSON CONTROL ACCESS SYSTEM-NIC
- F QUEST WIFI (PINK CAT6e)-NIC
- G FIBER OPTIC JUNCTION BOX-NIC

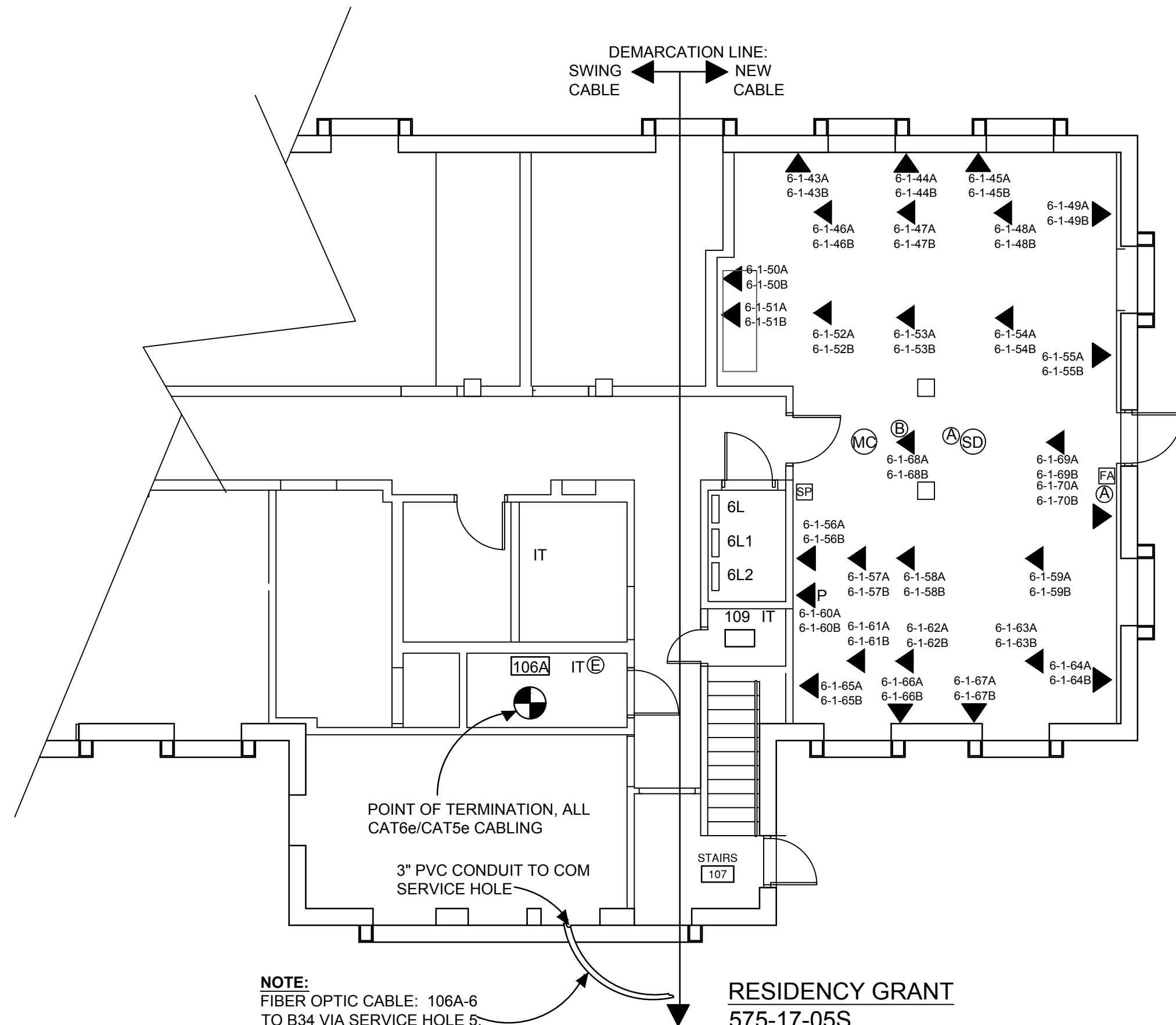
RESIDENCY GRANT

575-17-05S

EXISTING DATA SYSTEMS PAGE 9 of 12

NTS

JHB 5-1-18

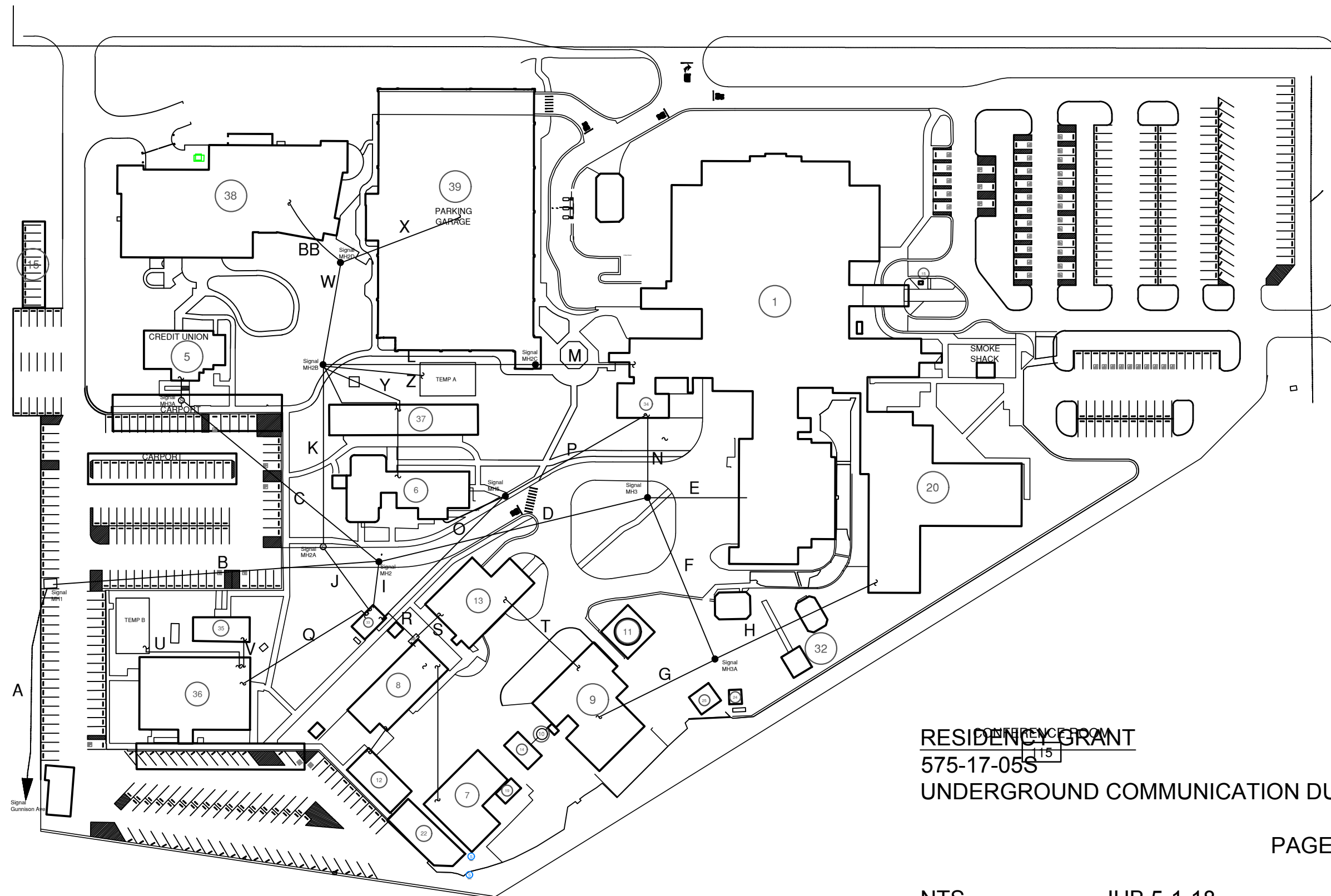


SPECIAL SYSTEMS NOTES

- NOTE: DUPLEX DATA JACK-RJ45 W/ CAT6e
- (A) RELOCATE EXISTING FIRE ALARM COMPONENTS.
 - (B) RELOCATE MASS COMM.
 - (C) 2-CAT6e CABLE FROM SERVICE POINT ROOM 106A. TERMINATE WITH RJ-45.
 - (D) RELOCATE ALL SIGNAL CABLING AND EQUIPMENT FROM 109-6 TO 106A. REMOVE ABANDONDED CABLING. TERMINATE AND CERTIFY FUNCTION.
 - (E) PROVIDE 24 STRAND, MULTIMODE FIBER OPTIC FROM 106A-6 TO BUILDING 34 VIA SERVICE HOLE 5.
 - (F) PROVIDE APC AR203A OR APPROVED EQUAL.
 - (G) PROVIDE TWO (2) LEVITON 5R2UL-F06 OR APPROVED EQUAL.

NOTE:
FIBER OPTIC CABLE: 106A-6
TO B34 VIA SERVICE HOLE 5:
140 L.F. VERIFY

RESIDENCY GRANT
575-17-05S
SPECIAL SYSTEMS PAGE 10 of 12



CONFERENCE ROOM
RESIDENCY GRANT
575-17-05S
UNDERGROUND COMMUNICATION DUCT

