

Robert J. Dole VA Medical Center

Wichita, KS

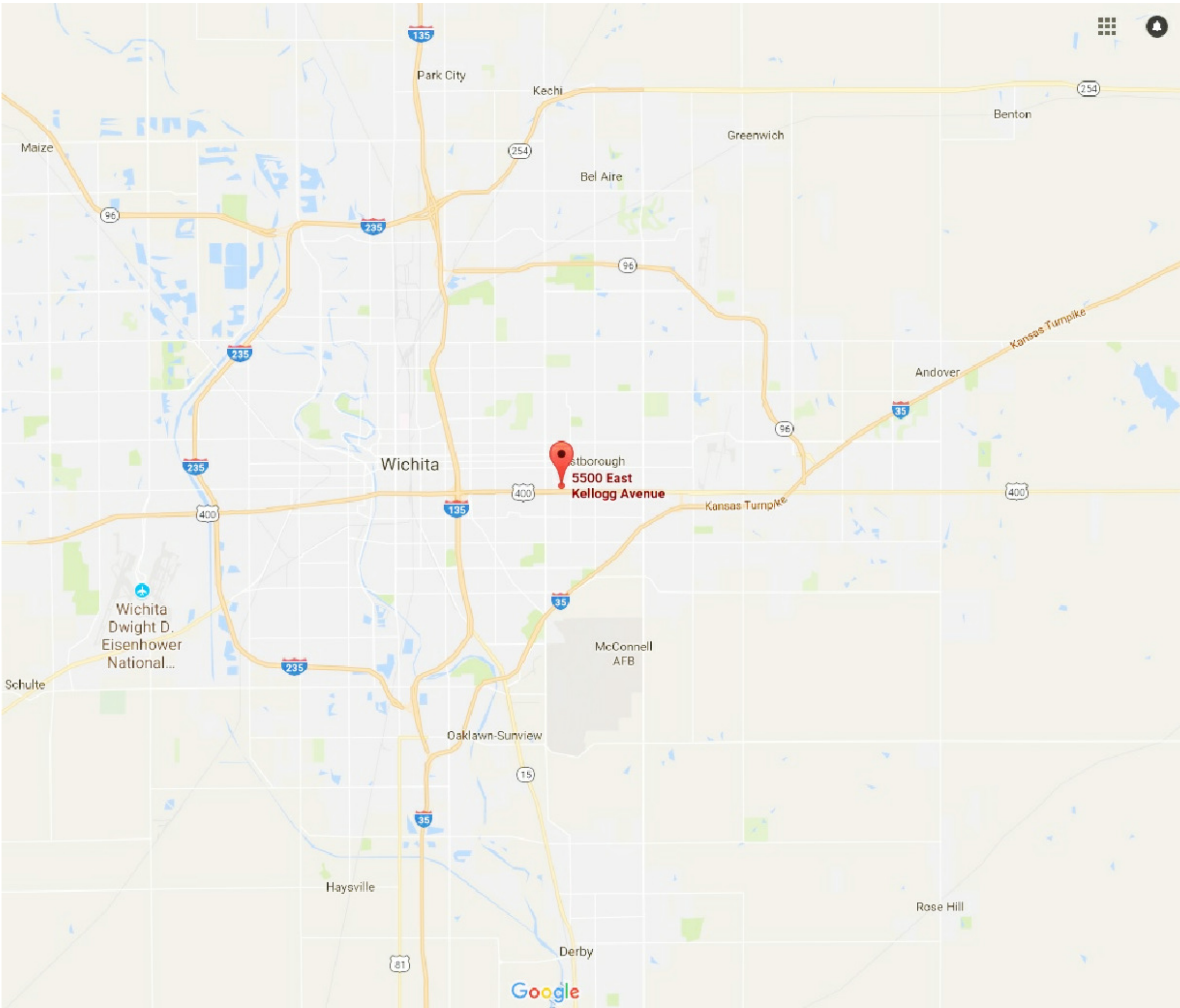
Bldg. 60

Electrical Infrastructure Upgrade

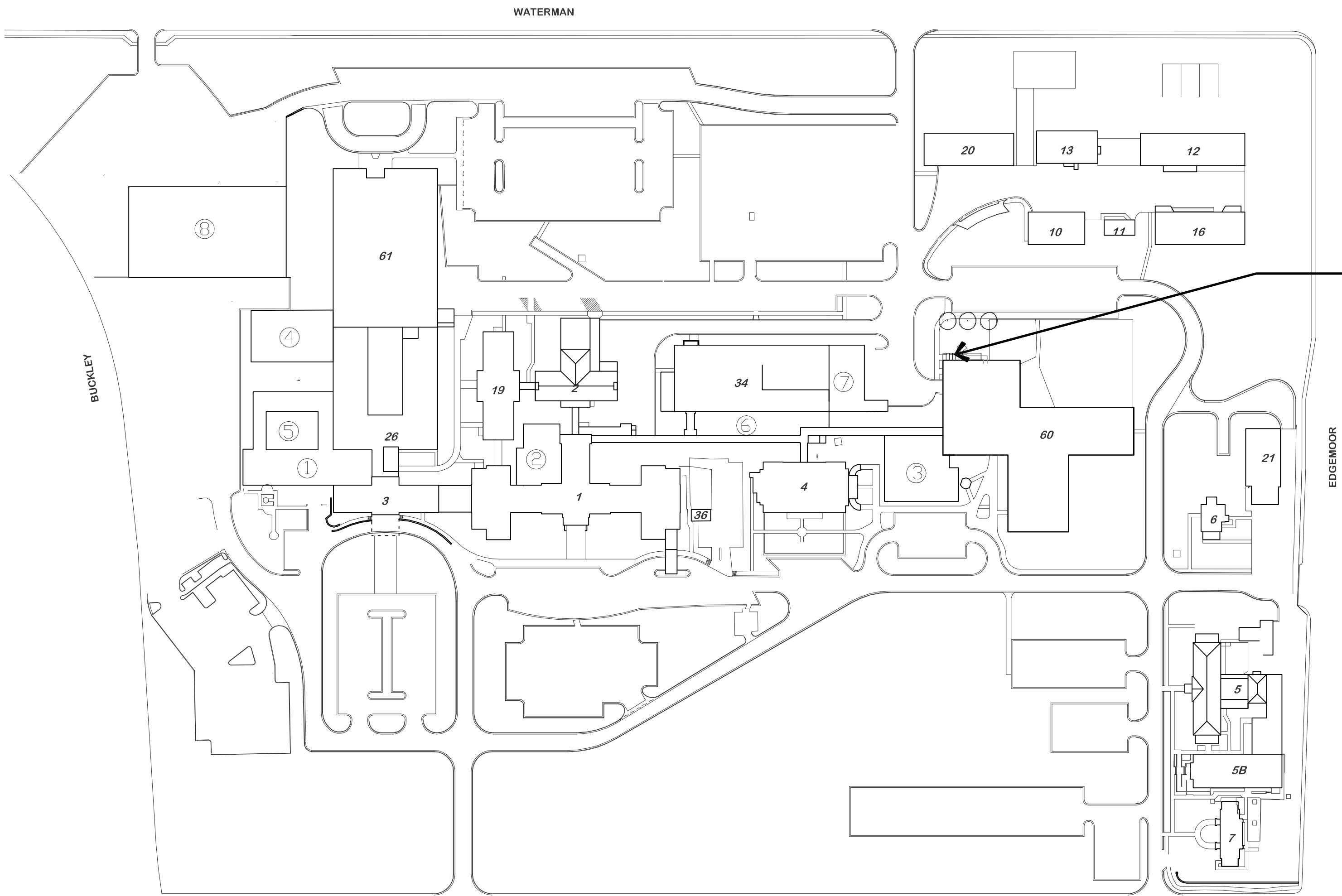
Contract No. VA255-17-C-0220,
Construct Electrical Infrastructure Distribution Point

INDEX OF DRAWINGS:

CS101	COVER SHEET, INDEX OF DRAWINGS, LOCATION MAPS
EG101	ELECTRICAL SYMBOLS LEGEND AND GENERAL NOTES
ES101	ELECTRICAL SITE PLAN
ES102	SITE PLANS
EP101	FIRST FLOOR ELECTRICAL PLANS
EP102	PENTHOUSE ELECTRICAL PLAN
E-501	ELECTRICAL DETAILS
E-601	DEMOLITION ONE-LINE DIAGRAM
E-602	ONE-LINE DIAGRAM
E-603	ONE-LINE DIAGRAM



1 LOCATION MAP
CS101 NO SCALE




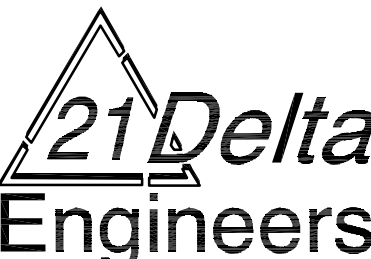
PROJECT
LOCATION
BLDG. 60

2 CAMPUS MAP
CS101 NO SCALE

RICK AMENT, MSA FACHE	MEDICAL CENTER DIRECTOR
DANA FOLEY, PHD	INTERIM ASSOCIATE DIRECTOR
NORMAN J. FOLBES, MARN	ASSOCIATE DIRECTOR OF PATIENT CARE
STED RAFFI, MD	INTERIM CHIEF OF STAFF
VICKI G. BONDIE, MBA	ASSISTANT DIRECTOR

Revisions	Date

CONSULTANT
 FARRIS ENGINEERING OMAHA LINCOLN COLORADO SPRINGS farris-usa.com FE #172103

ARCHITECT/ENGINEER OF RECORD
 21 Delta Engineers 21 Delta Engineers, LLC 14218 Dayton Cir - Suite #5 Omaha, Nebraska 68137-5568 PH: (402) 496-4115 Fax: (402) 384-8900 AE PROJECT NO.:

Stamp

Office of Construction and Facilities Management
 U.S. Department of Veterans Affairs

Drawing Title
COVER SHEET, INDEX OF DRAWINGS, LOCATION MAPS
Approved: Project Director

Phase
BID

Project Title	Project Number
CONSTRUCT ELEC. INFRASTRUCTURE DIST. POINT	589A7-17-201
Location VA MEDICAL CENTER WICHITA, KS	Building Number 60
Issue Date 12/22/17	Drawing Number CS101
Checked MDW	Dwg. 1 of 10
Drawn SCT	

A

B

C

D

E

F

ELECTRICAL SYMBOLS LEGEND (AS APPLICABLE)			
SWITCHING			
SYMBOL	DESCRIPTION	SYMBOL	DESCRIPTION
\$ 1	SINGLE POLE SWITCH - LETTER INDICATES SWITCH LEG	\$ P	PILOT LIGHT SWITCH
\$ 2	DOUBLE POLE SWITCH	\$ T	TIMER SWITCH
\$ 3	THREE-WAY SWITCH	\$ S	SENSOR SWITCH - WALL MOUNTED; SEE LIGHTING CONTROL SCHEME NARRATIVE FOR TYPE
\$ 4	FOUR-WAY SWITCH	◇ S,#	SENSOR - CEILING MOUNTED; SEE LIGHTING CONTROL SCHEME NARRATIVE FOR TYPE
\$ D	DIMMER SWITCH	◇ S,#	SENSOR - WALL MOUNTED; SEE LIGHTING CONTROL SCHEME NARRATIVE FOR TYPE
\$ H	HORSEPOWER RATED SWITCH	◇ DS,#	DAYLIGHT SENSOR - CEILING MOUNTED
\$ F	FUSED SWITCH	H-◇	LIGHTING CONTROL STATION - LETTER INDICATES TYPE
\$ TE	THERMAL ELEMENT		
\$ M	MOMENTARY CONTACT SWITCH		
\$ K	KEY OPERATED SWITCH		
LIGHTING			
LABEL INFORMATION		LETTER INDICATES LUMINAIRE MARK, NUMBER INDICATES ZONE IDENTIFIER, NO NUMBER INDICATES SINGLE ZONE	
○	LUMINAIRE	○	WALL MOUNTED LUMINAIRE
○	LUMINAIRE - LAMPS SWITCHED SEPARATE	○	WALL MOUNTED LUMINAIRE - NIGHT LIGHT
○	LUMINAIRE WITH AUXILIARY LIGHT	●	WALL MOUNTED LUMINAIRE - EMERGENCY
○	LUMINAIRE - EMERGENCY	○	EXIT SIGN - WALL/CEILING MOUNTED
○	LUMINAIRE - NIGHT LIGHT	○	COMBINATION EXIT SIGN/EMERGENCY LIGHTING UNIT
○	WALL MOUNTED LUMINAIRE	○	PHOTOCELL, DAYLIGHT SENSOR
○	WALL MOUNTED LUMINAIRE - EMERGENCY	○	EXTERIOR LUMINAIRE - POLE MOUNTED
○	WALL MOUNTED LUMINAIRE - NIGHT LIGHT	○	EXTERIOR LUMINAIRE - POLE MOUNTED
○	STRIP LUMINAIRE	○	EXTERIOR LUMINAIRE - POLE MOUNTED
○	STRIP LUMINAIRE - EMERGENCY	○	FLOOD LIGHT LUMINAIRE
○	STRIP LUMINAIRE - NIGHT LIGHT	○	EMERGENCY BATTERY PACK
○	LUMINAIRE	○	EMERGENCY LUMINAIRE REMOTE HEADS
○	LUMINAIRE - NIGHT LIGHT	○	TRACK LUMINAIRE
○	LUMINAIRE - EMERGENCY		
POWER DEVICES			
○	SINGLE RECEPTACLE	○	LIGHTING & APPLIANCE PANELBOARD
○	DUPLEX RECEPTACLE	○	POWER DISTRIBUTION EQUIPMENT
○	FOUR-PLY RECEPTACLE - TWO DUPLEX RECEPTACLES	○	TRANSFORMER
○	RANGE RECEPTACLE	○	ENCLOSED CIRCUIT BREAKER
○	SPECIAL RECEPTACLE	○	CABINET (TYPE INDICATED)
○ G	DUPLEX RECEPTACLE - GROUND-FAULT CIRCUIT-INTERRUPTER	○	MOTOR STARTER, LIGHTING CONTACTOR
○ IG	DUPLEX RECEPTACLE - ISOLATED GROUND	○	SAFETY SWITCH
○ WR	DUPLEX RECEPTACLE - WEATHER-RESISTANT GROUND-FAULT CIRCUIT-INTERRUPTER	○	COMBINATION MOTOR STARTER & SAFETY SWITCH
○ A	DUPLEX RECEPTACLE - ON APPLIANCE CIRCUIT	○	MOTOR
○ T	DUPLEX RECEPTACLE - TAMPER-RESISTANT	○	CORD DROP (J-BOX AT CEILING)
○ F	DUPLEX RECEPTACLE - ARC-FAULT RATED	○	CORD DROP (SPECIAL RECEPTACLE AT CEILING)
○ M	DUPLEX RECEPTACLE - MOUNTED IN MILLWORK	○	MULTI-OUTLET ASSEMBLY
○ B	DUPLEX RECEPTACLE - MOUNTED BELOW COUNTER	○	FLUSH FLOOR BOX
○	DUPLEX RECEPTACLE - CEILING MOUNTED	○	FLUSH POKE-THRU
○	DUPLEX RECEPTACLE - BOTTOM HALF SWITCHED	○	DAMPER
○	SPLIT-WIRE RECEPTACLE	○	SOLENOID
○	JUNCTION BOX		
RACEWAYS			
○	HOME RUN TO PANEL	○	TELEPHONE CONDUIT
○	UNSWITCHED LIGHTING CIRCUIT	○	CONDUIT UP
○	MASTER SATELLITE FIXTURE CONNECTION	○	CONDUIT DOWN
○	EMERGENCY CIRCUIT	○	CONDUIT SEAL
○	NIGHT LIGHTING CIRCUIT	○	CABLE TRAY
○	SOUND SYSTEM RACEWAY	○	CONDUIT SLEEVE (NUMBER INDICATES SIZE)
MISCELLANEOUS			
○	EQUIPMENT IDENTIFICATION TAG	○	NF
○	DETAIL REFERENCE	○	WP
○	SHEET REFERENCE	○	WG
○	FACP	○	XP
○	FAAP	○	30/3/103R
○	HOA	○	PROJECTOR INPUT STATION - LETTER INDICATES TYPE
○	CCT	○	PROJECTOR CONTROL STATION
○	PART. CCT	○	LIGHT LINEWORK = EXISTING OR DEMOLITION
○	COR	○	DARK LINEWORK = NEW

GENERAL ELECTRICAL DEMOLITION NOTES

APPLY TO ALL ELECTRICAL SHEETS

- A. COMPLETELY REMOVE ALL ELECTRICAL WIRING, CONDUIT, AND ASSOCIATED ANCILLARY EQUIPMENT SHOWN CROSSHATCHED. ITEMS INDICATED FOR REMOVAL ARE ONLY SUGGESTIVE OF THE AMOUNT OF DEMOLITION WORK INVOLVED. PERFORM A SITE INVESTIGATION TO AID IN DETERMINING THE COMPLETE EXTENT OF DEMOLITION WORK.
- B. COORDINATE AND SCHEDULE ALL NECESSARY POWER OUTAGES WITH THE CONTRACTING OFFICERS REPRESENTATIVE (COR) PRIOR TO PROCEEDING WITH SUCH WORK SO OPERATIONS IN ADJACENT OCCUPIED PORTIONS OF THE BUILDING ARE NOT INTERRUPTED OR RESTRICTED WITHOUT PRIOR APPROVAL.
- C. REMOVE ALL EXISTING BRANCH CIRCUITS INDICATED AS COMPLETELY AS POSSIBLE. REMOVE EXISTING CONDUCTORS COMPLETELY FROM THEIR RACEWAYS AND DO NOT REUSE EXCEPT WHERE SPECIFICALLY INDICATED. WHERE AN EXISTING DEVICE IS REMOVED FROM AN EXISTING CIRCUIT, PROVIDE NEW WIRING AND MAINTAIN CONTINUITY OF EXISTING CIRCUIT.
- D. REMOVE EXISTING COMPONENTS INDICATED AS COMPLETELY AS POSSIBLE. DELIVER EQUIPMENT CONSIDERED SALVAGEABLE BY THE OWNER'S REPRESENTATIVE AND NOT SHOWN FOR REUSE TO THE OWNER'S STORAGE LOCATION. REMOVE NON-SALVAGEABLE EQUIPMENT FROM THE SITE. PROPERLY DISPOSE OF LAMPS AND BALLASTS CONSIDERED HAZARDOUS WASTE.
- E. REMOVE EXISTING SURFACE MOUNTED BOXES, CONDUIT, SURFACE METAL RACEWAY, WIREWAY, ETC. INDICATED AS COMPLETELY AS POSSIBLE. PATCH ABANDONED PENETRATIONS FROM REMOVED FASTENERS. ABANDON IN PLACE NON-ACCESSIBLE BOXES SHOWN REMOVED AND COVER WITH STAINLESS STEEL COVER PLATES. ABANDON IN PLACE NON-ACCESSIBLE CONDUIT SHOWN REMOVED AND CAP OFF IN A SUITABLE MANNER PER LOCAL INSPECTOR'S REQUIREMENTS. CHISEL RACEWAYS STUBBED FROM A CONCRETE FLOOR OR WALL 2 INCHES BELOW ADJACENT SURFACE, GROUT, AND SCREED.
- F. COORDINATE REUSED EXISTING BOX AND CONDUIT LOCATIONS WITH NEW WORK LOCATIONS.
- G. REMOVE ELECTRICAL WORK AT ALL MECHANICAL EQUIPMENT SHOWN REMOVED. COORDINATE EQUIPMENT REMOVAL LOCATIONS WITH MECHANICAL DRAWINGS.

GENERAL ELECTRICAL NOTES

APPLY TO ALL ELECTRICAL SHEETS

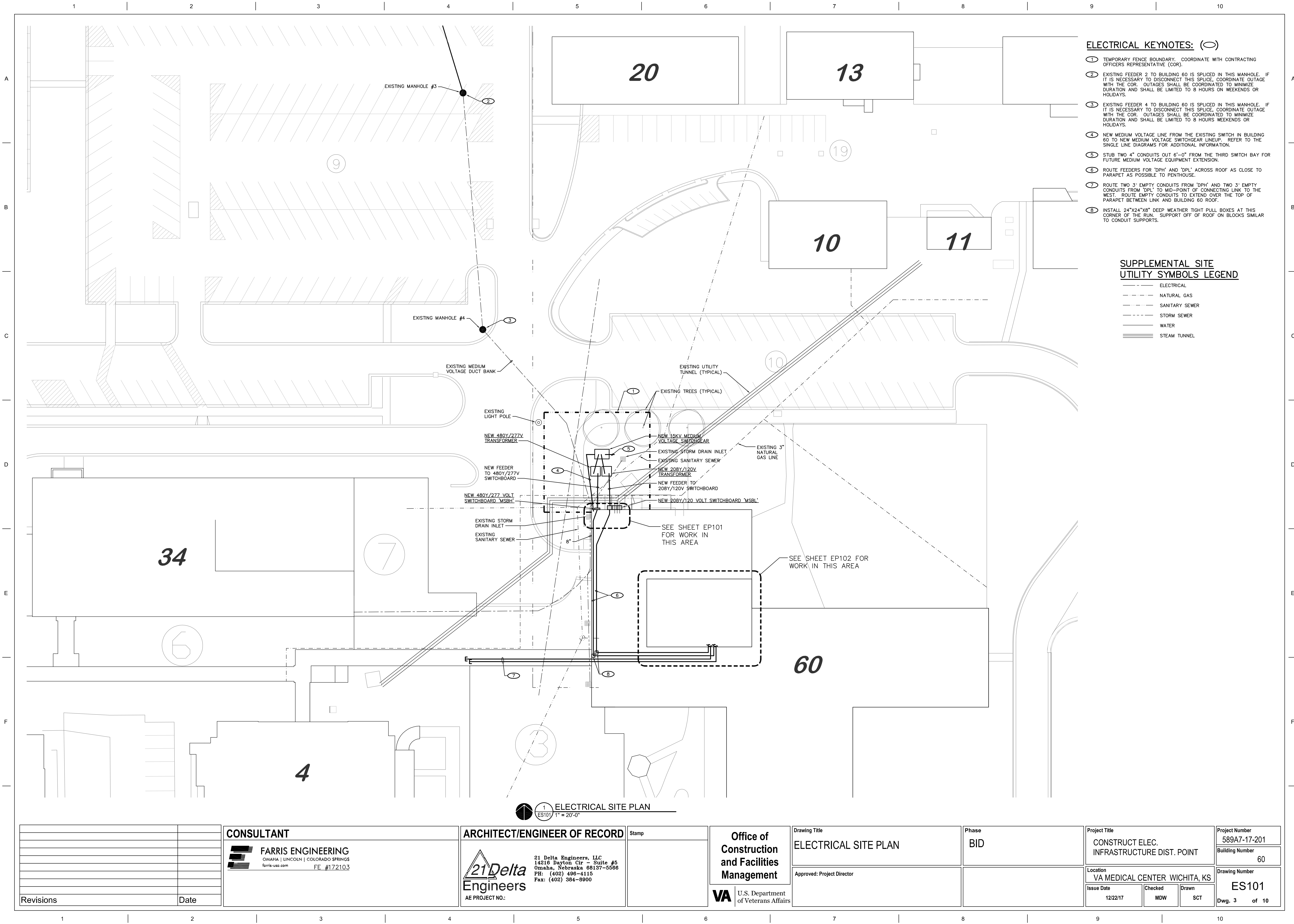
- A. MOUNTING HEIGHTS INDICATED ARE TO CENTER OF ROUGH-IN ABOVE FINISHED FLOOR (AFF).
- B. INSTALL ALL CONDUCTORS IN CONTINUOUS RACEWAY. PROVIDE INSULATED EQUIPMENT GROUNDING CONDUCTOR.
- C. PROVIDE DEDICATED NEUTRAL CONDUCTOR FOR EACH BRANCH CIRCUIT PHASE CONDUCTOR. EXCEPTION: WHERE AN EQUIPMENT MANUFACTURER REQUIRES A MULTIWIRE BRANCH CIRCUIT FOR ONLY ONE UTILIZATION EQUIPMENT AND WHERE ALL UNGROUNDED CONDUCTORS OF THAT CIRCUIT ARE OPENED SIMULTANEOUSLY BY THE BRANCH CIRCUIT OVERCURRENT DEVICE.
- D. CONCEAL ALL CONDUITS IN NEW WALLS, EXISTING STUD WALLS, OR ABOVE SUSPENDED CEILINGS.
- E. WHERE CONDUIT CANNOT BE CONCEALED IN EXISTING WALL OR CEILING CAVITIES, INSTALL CONDUCTORS IN SURFACE METAL RACEWAYS; SURFACE CONDUIT OR METAL SURFACE RACEWAY AT COR'S DISCRETION.
- F. PAINT SURFACE CONDUIT IN FINISHED AREAS, WHEN ALLOWED, TO MATCH SURROUNDING SURFACES. COORDINATE FINISHES WITH COR.
- G. INSTALL EXPOSED OR CONCEALED RACEWAY NEAR METAL CORRUGATED SHEET ROOF DECKING SO NEAREST OUTER RACEWAY SURFACE IS NOT LESS THAN 6 INCHES FROM THE NEAREST SURFACE OF THE ROOF DECKING. EXCEPTION: RIGID METAL CONDUIT AND INTERMEDIATE METAL CONDUIT SHALL NOT BE REQUIRED TO MAINTAIN THIS CLEARANCE.
- H. PATCH, PAINT, REPAIR OR REPLACE ALL WALLS, CEILINGS, OR OTHER BUILDING ELEMENTS DISTURBED DURING INSTALLATION OF ELECTRICAL WORK.
- I. USE ROOM NUMBERS ASSIGNED BY OWNER AND NOT ROOM NUMBERS LISTED ON DRAWINGS FOR LABELING OF PANELBOARD DIRECTORIES, FIRE ALARM PANEL PROGRAMMING, ETC. INCLUDE A DESCRIPTION OF LOAD SUCH AS LIGHTS, RECEPTACLES, MECHANICAL UNIT LOCATIONS, ETC. ON TYPED PANELBOARD DIRECTORIES.

ALTERNATES:

DEDUCT ALTERNATE #1
SHEET ES102, EP101, E-601, E-603 -- REMOVE FROM THE PROJECT
THE DEMOLITION AND REPLACEMENT OF THE 1600 AMP SWITCHBOARD FEEDING BUILDING 60. THE EXISTING SWITCHBOARD WILL REMAIN AND BE REFD.

NOTICE:
DO NOT SCALE DRAWINGS. VERIFY ALL DIMENSIONS AND CLEARANCES FROM ARCHITECTURAL, STRUCTURAL, SHOP AND OTHER APPROPRIATE DRAWINGS OR AT SITE. LAY OUT AND COORDINATE ALL WORK PRIOR TO INSTALLATION TO PROVIDE CLEARANCES REQUIRED FOR OPERATION, MAINTENANCE, AND CODES. VERIFY NON-INTERFERENCE WITH OTHER WORK. DO NOT FABRICATE PRIOR TO VERIFICATION OF CLEARANCES FOR ALL TRADES. THIS NOTICE APPLIES TO ALL FARRIS ENGINEERING PLANS.

		CONSULTANT FARRIS ENGINEERING OMAHA LINCOLN COLORADO SPRINGS farris-usa.com FE #172103	ARCHITECT/ENGINEER OF RECORD 21 Delta Engineers 21 Delta Engineers, LLC 14216 Dayton Cir - Suite #5 Omaha, Nebraska 68137-5568 PH: (402) 496-4115 Fax: (402) 384-8900	Stamp	Office of Construction and Facilities Management VA U.S. Department of Veterans Affairs	Drawing Title GENERAL ELECTRICAL NOTES & SYMBOLS Approved: Project Director	Phase BID	Project Title CONSTRUCT ELEC. INFRASTRUCTURE DIST. POINT	Project Number 589A7-17-201 Building Number 60
Revisions	Date								
								Location VA MEDICAL CENTER WICHITA, KS	Drawing Number EG101 Dwg. 2 of 10
								Issue Date 12/22/17	Checked MDW
								Drawn SCT	



ELECTRICAL KEYNOTES: (○)

- TEMPORARY FENCE BOUNDARY. COORDINATE WITH CONTRACTING OFFICERS REPRESENTATIVE (COR).
- EXISTING FEEDER 2 TO BUILDING 60 IS SPliced IN THIS MANHOLE. IF IT IS NECESSARY TO DISCONNECT THIS SPICE, COORDINATE OUTAGE WITH THE COR. OUTAGES SHALL BE COORDINATED TO MINIMIZE DURATION AND SHALL BE LIMITED TO 8 HOURS ON WEEKENDS OR HOLIDAYS.
- EXISTING FEEDER 4 TO BUILDING 60 IS SPliced IN THIS MANHOLE. IF IT IS NECESSARY TO DISCONNECT THIS SPICE, COORDINATE OUTAGE WITH THE COR. OUTAGES SHALL BE COORDINATED TO MINIMIZE DURATION AND SHALL BE LIMITED TO 8 HOURS WEEKENDS OR HOLIDAYS.
- NEW MEDIUM VOLTAGE LINE FROM THE EXISTING SWITCH IN BUILDING 60 TO NEW MEDIUM VOLTAGE SWITCHGEAR LINEUP. REFER TO THE SINGLE LINE DIAGRAMS FOR ADDITIONAL INFORMATION.
- STUB TWO 4" CONDUITS OUT 6'-0" FROM THE THIRD SWITCH BAY FOR FUTURE MEDIUM VOLTAGE EQUIPMENT EXTENSION.
- ROUTE FEEDERS FOR 'DPH' AND 'DPL' ACROSS ROOF AS CLOSE TO PARAPET AS POSSIBLE TO PENTHOUSE.
- ROUTE TWO 3' EMPTY CONDUITS FROM 'DPH' AND TWO 3' EMPTY CONDUITS FROM 'DPL' TO MID-POINT OF CONNECTING LINK TO THE WEST. ROUTE EMPTY CONDUITS TO EXTEND OVER THE TOP OF PARAPET BETWEEN LINK AND BUILDING 60 ROOF.
- INSTALL 24"x24"x8" DEEP WEATHER TIGHT PULL BOXES AT THIS CORNER OF THE RUN. SUPPORT OFF OF ROOF ON BLOCKS SIMILAR TO CONDUIT SUPPORTS.

SUPPLEMENTAL SITE UTILITY SYMBOLS LEGEND

- ELECTRICAL
- NATURAL GAS
- SANITARY SEWER
- STORM SEWER
- WATER
- STEAM TUNNEL

1 ELECTRICAL SITE PLAN
ES101 1" = 20'-0"

Revisions	Date

CONSULTANT

FARRIS ENGINEERING
OMAHA | LINCOLN | COLORADO SPRINGS
farris-usa.com FE #172103

ARCHITECT/ENGINEER OF RECORD

21 Delta Engineers
21 Delta Engineers, LLC
14218 Dayton Cir - Suite #5
Omaha, Nebraska 68137-5568
PH: (402) 496-4115
Fax: (402) 384-8900
AE PROJECT NO.:

Stamp

**Office of
Construction
and Facilities
Management**

VA U.S. Department
of Veterans Affairs

Drawing Title

ELECTRICAL SITE PLAN

Phase

BID

Project Title

CONSTRUCT ELEC.
INFRASTRUCTURE DIST. POINT

Project Number

589A7-17-201

Building Number

60

Location

VA MEDICAL CENTER WICHITA, KS

Drawing Number

ES101

Issue Date

12/22/17

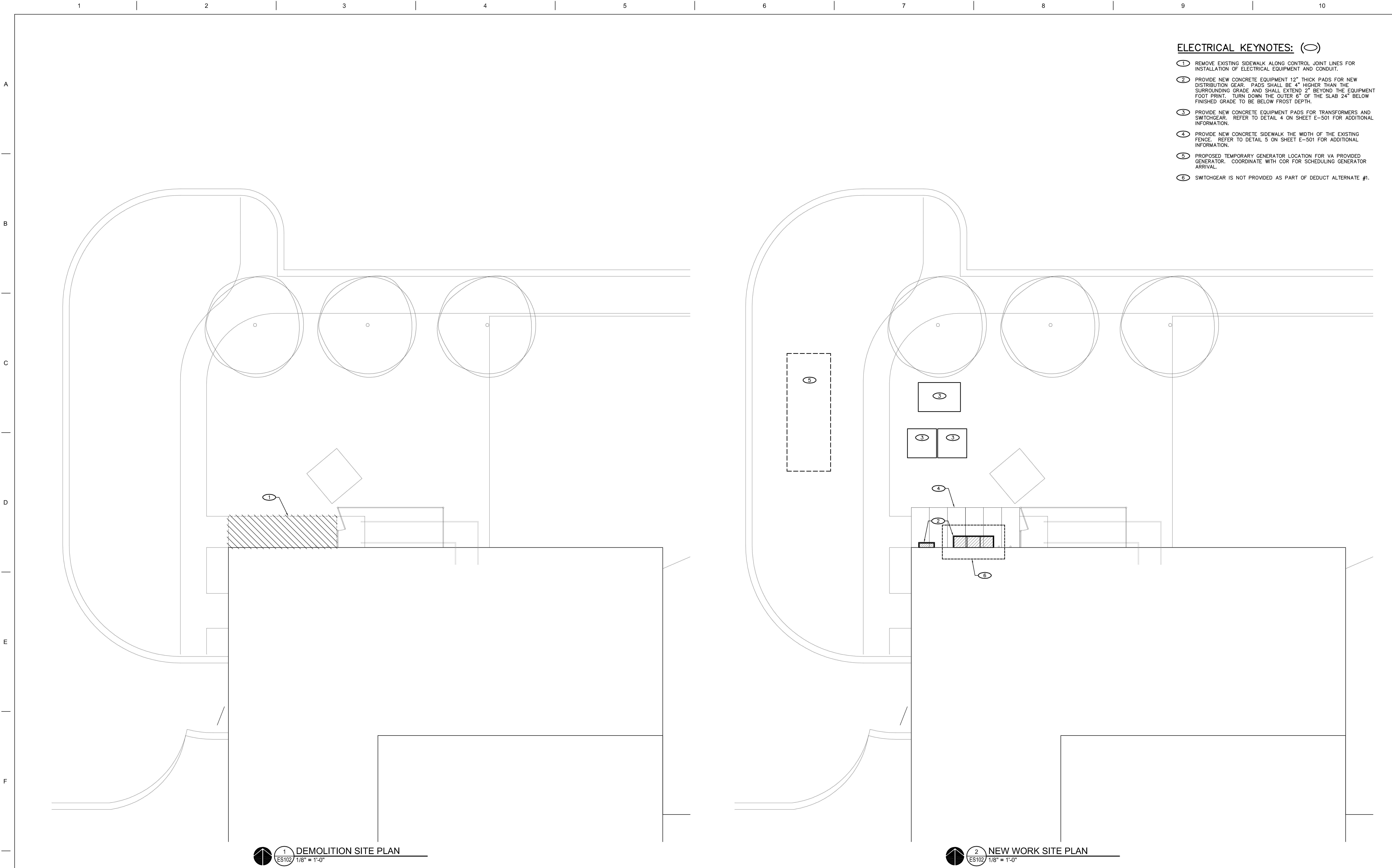
Checked

MDW

Drawn

SCT

Dwg. 3 of 10



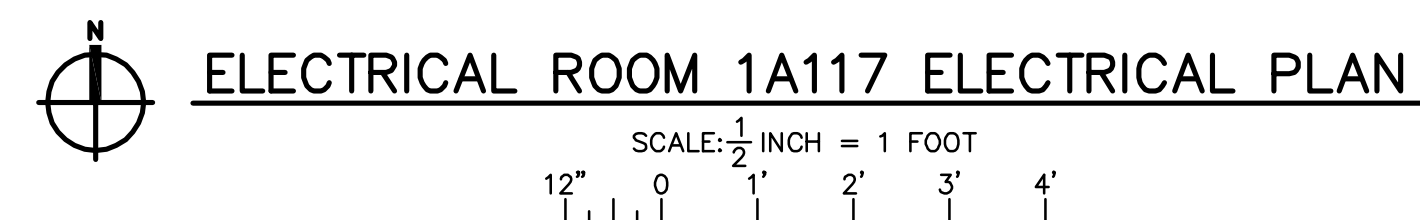
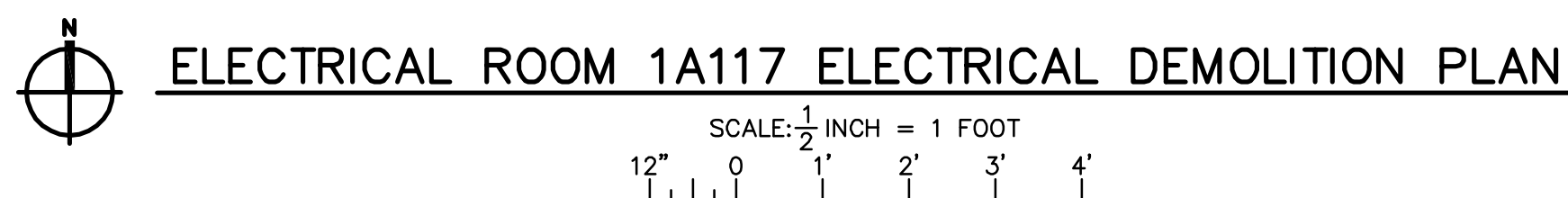
ELECTRICAL KEYNOTES: (○)

- 1 REMOVE EXISTING SIDEWALK ALONG CONTROL JOINT LINES FOR INSTALLATION OF ELECTRICAL EQUIPMENT AND CONDUIT.
- 2 PROVIDE NEW CONCRETE EQUIPMENT 12" THICK PADS FOR NEW DISTRIBUTION GEAR. PADS SHALL BE 4" HIGHER THAN THE SURROUNDING GRADE AND SHALL EXTEND 2' BEYOND THE EQUIPMENT FOOT PRINT. TURN DOWN THE OUTER 6" OF THE SLAB 24" BELOW FINISHED GRADE TO BE BELOW FROST DEPTH.
- 3 PROVIDE NEW CONCRETE EQUIPMENT PADS FOR TRANSFORMERS AND SWITCHGEAR. REFER TO DETAIL 4 ON SHEET E-501 FOR ADDITIONAL INFORMATION.
- 4 PROVIDE NEW CONCRETE SIDEWALK THE WIDTH OF THE EXISTING FENCE. REFER TO DETAIL 5 ON SHEET E-501 FOR ADDITIONAL INFORMATION.
- 5 PROPOSED TEMPORARY GENERATOR LOCATION FOR VA PROVIDED GENERATOR. COORDINATE WITH COR FOR SCHEDULING GENERATOR ARRIVAL.
- 6 SWITCHGEAR IS NOT PROVIDED AS PART OF DEDUCT ALTERNATE #1.

1
ES102 1/8" = 1'-0"
DEMOLITION SITE PLAN


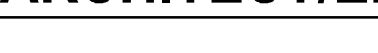
2
ES102 1/8" = 1'-0"
NEW WORK SITE PLAN

		<div>CONSULTANT</div> <div><div><div></div><div>FARRIS ENGINEERING</div><div>OMAHA LINCOLN COLORADO SPRINGS</div><div>farris-usa.com</div></div><div>FE #172103</div></div>	<div>ARCHITECT/ENGINEER OF RECORD</div> <div><div><div>21Delta</div><div>Engineers</div></div><div>21 Delta Engineers, LLC 14216 Dayton Cir - Suite #5 Omaha, Nebraska 68137-5566 PH: (402) 496-4115 Fax: (402) 384-8900</div></div> <div>AE PROJECT NO.:</div>	Stamp	<div>Office of Construction and Facilities Management</div> <div>VAU.S. Department of Veterans Affairs</div>	Drawing Title	Project Title	Project Number																																																																																																																																																																																																																																																																																																																																																																																																																																																																																																																																																																																																																																																																																																																																																																																																																																																																																																																																																																																																																																																																																																																																																																																																																																																																																																																																																																																																																																																																																																																																																																																																																																																																																																											
SITE PLANS	CONSTRUCT ELEC. INFRASTRUCTURE DIST. POINT					589A7-17-201																																																																																																																																																																																																																																																																																																																																																																																																																																																																																																																																																																																																																																																																																																																																																																																																																																																																																																																																																																																																																																																																																																																																																																																																																																																																																																																																																																																																																																																																																																																																																																																																																																																																																																													
						Building Number																																																																																																																																																																																																																																																																																																																																																																																																																																																																																																																																																																																																																																																																																																																																																																																																																																																																																																																																																																																																																																																																																																																																																																																																																																																																																																																																																																																																																																																																																																																																																																																																																																																																																																													
						60																																																																																																																																																																																																																																																																																																																																																																																																																																																																																																																																																																																																																																																																																																																																																																																																																																																																																																																																																																																																																																																																																																																																																																																																																																																																																																																																																																																																																																																																																																																																																																																																																																																																																																													
Approved: Project Director						Drawing Number																																																																																																																																																																																																																																																																																																																																																																																																																																																																																																																																																																																																																																																																																																																																																																																																																																																																																																																																																																																																																																																																																																																																																																																																																																																																																																																																																																																																																																																																																																																																																																																																																																																																																																													
						ES102																																																																																																																																																																																																																																																																																																																																																																																																																																																																																																																																																																																																																																																																																																																																																																																																																																																																																																																																																																																																																																																																																																																																																																																																																																																																																																																																																																																																																																																																																																																																																																																																																																																																																																													
Revisions	Date																																																																																																																																																																																																																																																																																																																																																																																																																																																																																																																																																																																																																																																																																																																																																																																																																																																																																																																																																																																																																																																																																																																																																																																																																																																																																																																																																																																																																																																																																																																																																																																																																																																																																																																		</



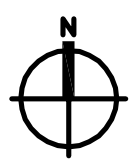
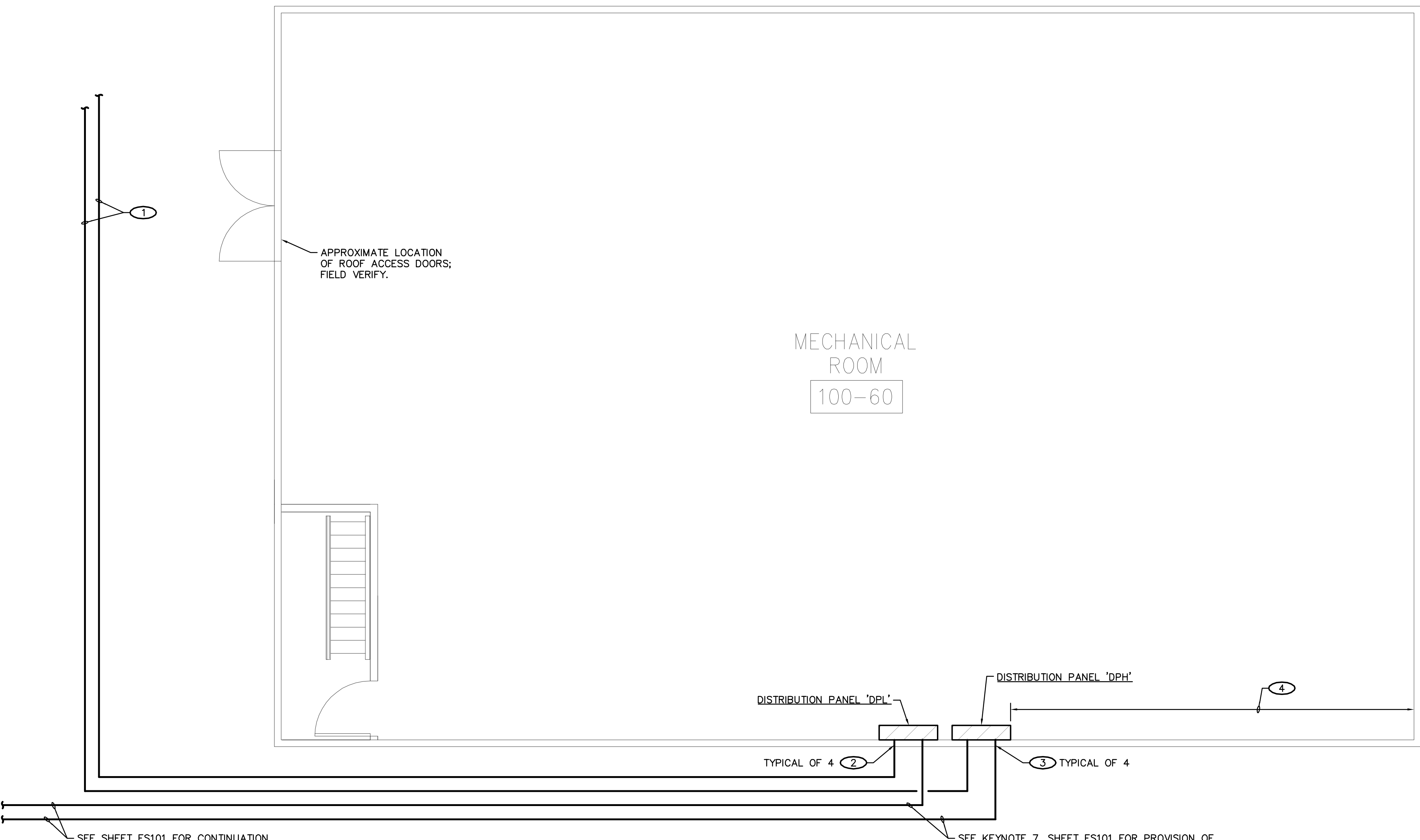
- 1 REMOVE EXISTING 300 KVA TRANSFORMER AND TRANSITION SECTIONS. RECYCLE AND/OR DISPOSE OF MATERIALS PROPERLY. TRANSFORMER NAMEPLATE INDICATES ORIGINAL CONSTRUCTION WAS WITH NON-PCB OIL.
- 2 REMOVE EXISTING MAIN SECTION OF DISTRIBUTION BOARD.
- 3 EXISTING BUSS AND DISTRIBUTION SECTION ENCLOSURE SHALL REMAIN. REMOVE EXISTING INTERIOR BUS BARS AND CIRCUIT BREAKERS. THESE SECTIONS SHALL BE USED AS SPLICE BOX FOR CONNECTING NEW FEEDERS TO EXISTING.
- 4 REMOVE CONDUIT AND WIRE FROM BUSS SECTION TO EXISTING MDP.
- 5 REMOVE EXISTING WALL MOUNTED AIR CONDITIONING UNIT. PATCH HOLES WALL TO MATCH EXISTING MATERIALS IN CROSS SECTION.
- 6 REMOVE EXISTING CONCRETE FLOOR AND SUBGRADE AS NECESSARY TO EXPOSE THE NEW DUCT. PATCH FLOOR TO EXISTING SWITCH. PROTECT EXISTING SWITCHGEAR FROM DUST AND DEBRIS DURING THE PROCESS.
- 7 BACKFILL AND REPLACE EXISTING FLOOR SLAB TO MATCH PREVIOUS EXISTING MATERIAL AND THICKNESS.
- 8 ROUTE THE 480 AND 208 VOLT FEEDERS FROM 'MSBH' AND 'MSBL' TO PENHOUSE DISTRIBUTION PANELS UP EXTERIOR WALL AND ACROSS ROOF. SEE SHEET EP102 FOR FURTHER INFORMATION.
- 9 REMOVE 208 VOLT FEEDERS FROM 'MSBL' THROUGH WALL AND DIRECTLY TO MAIN BREAKER OF EXISTING MDP. SEE ONE-LINE RISK DIAGRAM FOR SIZE.

- (12) ROUTE 208 VOLT FEEDERS FROM "MSBL" THROUGH WALL AND TO SPICE BOX AND CONNECT TO EXISTING FEEDERS. SEE ONE-LINE RISER DIAGRAM SHEET E-603 FOR QUANTITY AND SIZES.
- (11) ALL EXTERIOR PENETRATIONS OF WALL SHALL BE SEALED EXTERNALLY AT THE PERIMETER OF THE CONDUIT AND SEALED INTERNALLY AT THE CONDUCTORS AT THE WALL BOUNDARY. PROVIDE PULL BOX OR BOXES AS REQUIRED AT INTERIOR OF WALL TO FACILITATE INSTALLATION AND SEALING OF CONDUITS.
- (12) AFTER COMPLETION OF ALL SPLICES TO EXISTING CONDUCTORS, PROVIDE SHEET METAL SLATE TO SIDES OF EXISTING MEDIUM VOLTAGE SWITCH OR SWITCHGEAR AT FACTORY SUPPLIED STAINLESS STEEL PLATE SCREWED OR BOLTED TO THE EXISTING ENCLOSURE. USE A MINIMUM OF THREE INDIVIDUAL COVERS PER SIDE RATHER THAN ONE LARGE PIECE.
- (13) COORDINATE WITH COR FOR VA PROVIDED TEMPORARY GENERATOR TO PROVIDE POWER TO BUILDING 60 FOR THE DURATION OF THE OUTAGES AT BUILDING 60. CONNECT TO THE EXISTING SWITCHGEAR FOR AS LONG AS POSSIBLE.
- (14) THIS WORK GOES AWAY AS PART OF DEDUCT ALTERNATE #1. SEE SHEET EG01 FOR ALTERNATE DESCRIPTION.
- (15) PROVIDE GROUND BAR AT LOCATION SHOWN. PROVIDE TO NEW SERVICES AND EXISTING GROUNDING ELECTRODES.

		<div>CONSULTANT</div> <div><div></div><div>FARRIS ENGINEERING</div><div>OMAHA LINCOLN COLORADO SPRINGS</div><div>farris-usa.com</div><div>FE #172103</div></div>	<div>ARCHITECT/ENGINEER OF RECORD</div> <div><div></div><div><div>21 Delta Engineers, LLC</div><div>14216 Dayton Cir - Suite #5</div><div>Omaha, Nebraska 68137-5566</div><div>PH: (402) 496-4115</div><div>Fax: (402) 384-8900</div></div></div> <div>AE PROJECT NO.:</div>	Stamp	<div>Office of Construction and Facilities Management</div> <div><div>VA</div><div>U.S. Department of Veterans Affairs</div></div>	Drawing Title	Phase	Project Title	Project Number
						CONSTRUCT ELEC. INFRASTRUCTURE DIST. POINT	589A7-17-201		
							Building Number		
							60		
						Location	Drawing Number		
						VA MEDICAL CENTER WICHITA, KS	EP101		
		Issue Date	Checked	Drawn	Dwg. 5 of 10				
		12/22/17	MDW	SCF					
Revisions	Date								

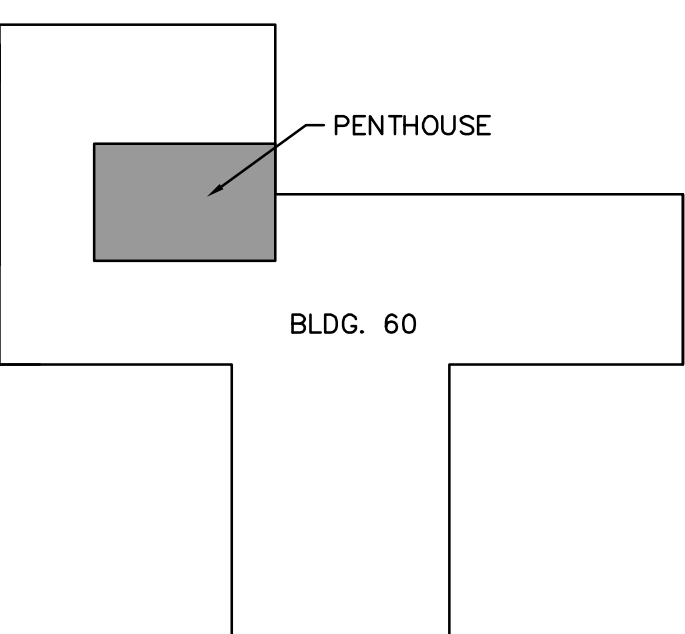
ELECTRICAL KEYNOTES: (O)

- ① ROUTE FEEDERS TO "DPH" AND "DPL" ACROSS ROOF TO SOUTH EXTERIOR WALL OF PENTHOUSE. CONDUITS SHALL BE SUPPORTED ACROSS ROOF WITH 8-LINE SERIES "DB" OR EQUAL RACEWAY SUPPORT BLOCKS. ROUTE CONDUIT TO EAST WALL OF PENTHOUSE, FOLLOWING REMOVAL AND A PATH TO THE STAIRWAY UP TO THE ROOF. COORDINATE ROUTING OF CONDUIT WITH MECHANICAL EQUIPMENT, VENTS, DUCTWORK, ETC. INSTALLED AT THIS LOCATION. SEE "MECHANICAL" DRAWING SET DETAIL 6 ON SHEET E-501 FOR ADDITIONAL INFORMATION.
- ② CONDUIT SHALL RISE UP EXTERIOR WALL OF PENTHOUSE, ENTER PENTHOUSE INTO PULL BOX ADJACENT TO DISTRIBUTION PANEL, THEN HORIZONTALLY INTO PANEL. DO NOT PENETRATE WALL AND ENTER DIRECTLY INTO THE BACK OF DISTRIBUTION PANEL.
- ③ ALL EXTERIOR PENETRATIONS OF PENTHOUSE WALL SHALL BE SEALED EXTERNALLY AT THE PERIMETER OF THE CONDUIT AND SEALED INTERNALLY AT OTHER SIDE OF THE WALL BOUNDARY. PROVIDE PULL BOX OR BOXES AS REQUIRED AT INTERIOR OF WALL TO FACILITATE INSTALLATION AND SEALING OF CONDUITS.
- ④ LOCATE PANELS APPROXIMATELY 23' FROM EAST WALL. LOCATION MAY BE ADJUSTED SLIGHTLY TO ACCORD FOR EXISTING CONDITIONS.



PENTHOUSE ELECTRICAL PLAN

SCALE: $\frac{1}{4}$ INCH = 1 FOOT

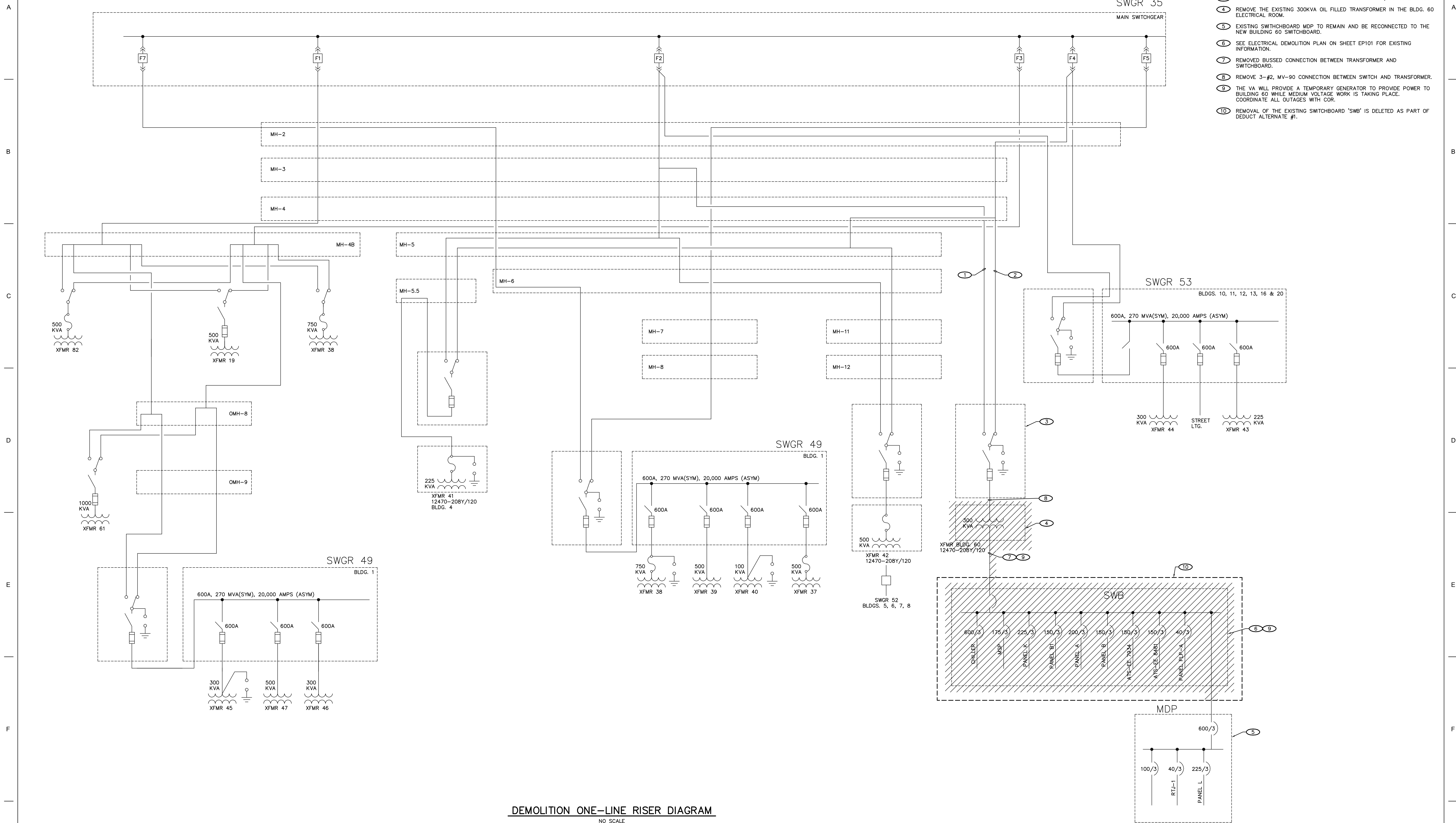


KEYPLAN



NO SCALE

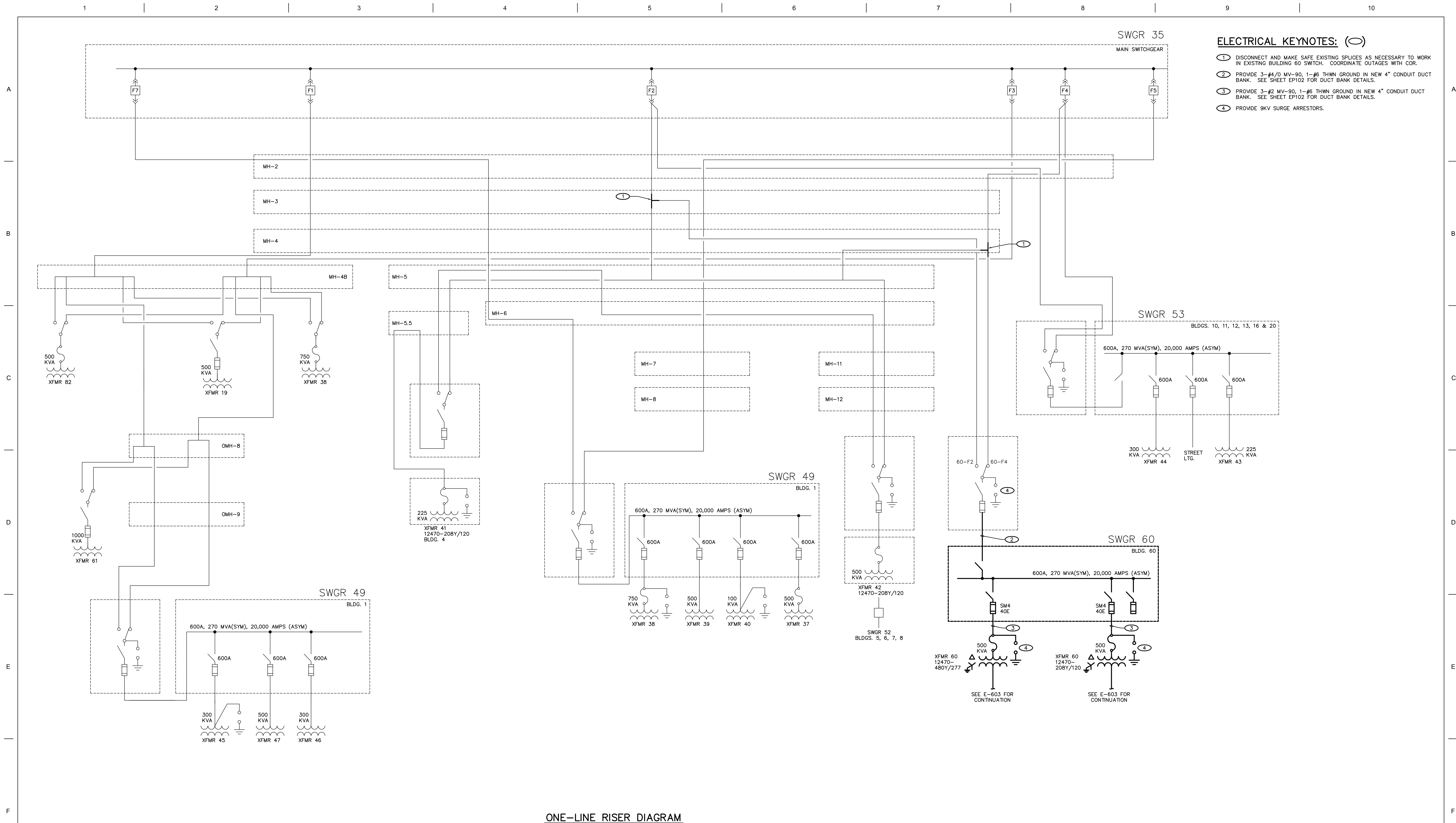
[illegible]





DEMOLITION ONE-LINE RISER DIAGRAM

		<div>CONSULTANT</div> <div><div></div><div>FARRIS ENGINEERING</div><div>OMAHA LINCOLN COLORADO SPRINGS</div><div>farris-usa.com</div><div>FE #172103</div></div>	<div>ARCHITECT/ENGINEER OF RECORD</div> <div><div></div><div>21 Delta Engineers, LLC</div><div>14216 Dayton Cir - Suite #5</div><div>Omaha, Nebraska 68137-5566</div><div>PH: (402) 496-4115</div><div>Fax: (402) 384-8900</div></div> <div>AE PROJECT NO.:</div>	Stamp	<div>Office of Construction and Facilities Management</div> <div><div>VA</div><div>U.S. Department of Veterans Affairs</div></div>	Drawing Title	Phase	Project Title	Project Number		
						DEMOLITION ONE-LINE DIAGRAM	BID	CONSTRUCT ELEC. INFRASTRUCTURE DIST. POINT	589A7-17-201		
						Approved: Project Director		Location VA MEDICAL CENTER WICHITA, KS	Building Number 60		
								Issue Date 12/22/17	Checked MDW	Drawn SCT	Drawing Number E-601
											Dwg. 8 of 10
Revisions	Date										



- ELECTRICAL KEYNOTES:** (○)
- 1 DISCONNECT AND MAKE SAFE EXISTING SPLICES AS NECESSARY TO WORK IN EXISTING BUILDING 60 SWITCH. COORDINATE OUTAGES WITH COR.
 - 2 PROVIDE 3-#4/0 MV-90, 1-#6 THWN GROUND IN NEW 4" CONDUIT DUCT BANK. SEE SHEET EP102 FOR DUCT BANK DETAILS.
 - 3 PROVIDE 3-#2 MV-90, 1-#6 THWN GROUND IN NEW 4" CONDUIT DUCT BANK. SEE SHEET EP102 FOR DUCT BANK DETAILS.
 - 4 PROVIDE 9KV SURGE ARRESTORS.

ONE-LINE RISER DIAGRAM
NO SCALE

		<div>CONSULTANT</div> <div><div><div></div><div></div><div></div><div></div></div><div>FARRIS ENGINEERING</div><div>OMAHA LINCOLN COLORADO SPRINGS</div><div>farris-usa.com</div><div>FE #172103</div></div>	<div>ARCHITECT/ENGINEER OF RECORD</div> <div><div><div></div><div></div><div></div><div></div></div><div>21Delta</div><div>Engineers</div></div> <div>21 Delta Engineers, LLC 14216 Dayton Cir - Suite #5 Omaha, Nebraska 68137-5568 PH: (402) 496-4115 Fax: (402) 384-8900</div> <div>AE PROJECT NO.:</div>	<div>Stamp</div>	<div>Office of Construction and Facilities Management</div> <div>VAU.S. Department of Veterans Affairs</div>	<div>Drawing Title</div> <div>ONE-LINE DIAGRAM</div>	<div>Phase</div> <div>BID</div>	<div>Project Title</div> <div>CONSTRUCT ELEC. INFRASTRUCTURE DIST. POINT</div>	<div>Project Number</div> <div>589A7-17-201</div>
						<div>Building Number</div> <div>60</div>			
						<div>Location</div> <div>VA MEDICAL CENTER WICHITA, KS</div>	<div>Drawing Number</div> <div>E-602</div>		
						<div>Issue Date</div> <div>12/22/17</div>	<div>Checked</div> <div>MDW</div>	<div>Drawn</div> <div>SCT</div>	<div>Dwg. 9 of 10</div>
Revisions	Date								

F

- F**