

Distance from Sprinkler to Side of Beam	Maximum Allowable Distance Deflector above Bottom of Beam
Less than 1 ft	0 in.
1 ft to less than 1 ft 6 in	2 1/2 in.
1 ft 6 in to less than 2 ft	3 1/2 in.
2 ft to less than 2 ft 6 in	5 1/2 in.
2 ft 6 in to less than 3 ft	7 1/2 in.
3 ft to less than 3 ft 6 in	9 1/2 in.
3 ft 6 in to less than 4 ft	12 in.
4 ft to less than 4 ft 6 in	14 in.
4 ft 6 in to less than 5 ft	16 in.
5 ft to less than 5 ft 6 in	18 in.
5 ft 6 in to less than 6 ft	20 in.
6 ft to less than 6 ft 6 in	24 in.
6 ft 6 in to less than 7 ft	30 in.
7 ft to less than 7 ft 6 in	35 in.

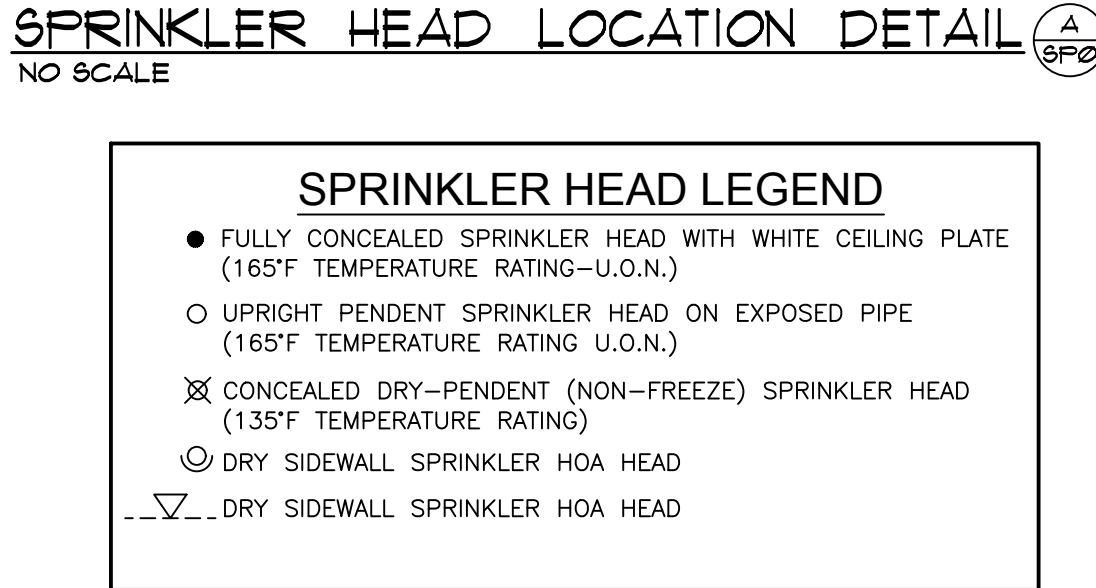
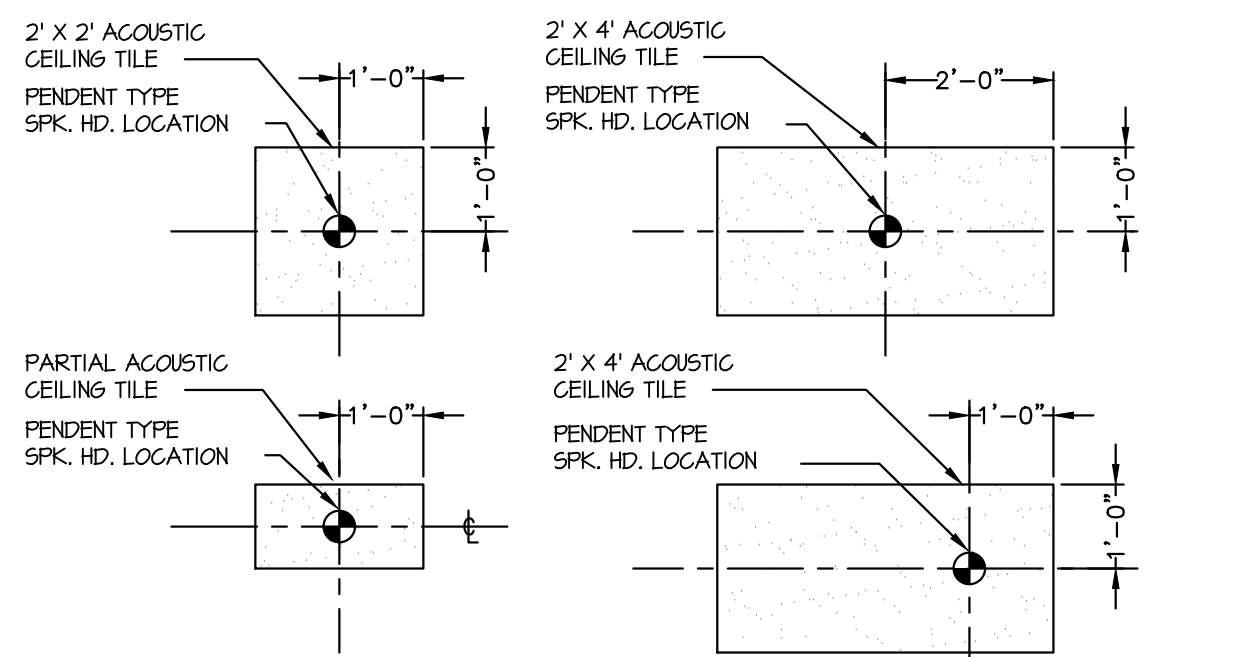


### GENERAL NOTES:

- ALL SYSTEM COMPONENTS AND MATERIALS TO BE UL LISTED AND INSTALLED PER NFPA AND MANUFACTURE'S LISTING.
- THE SPRINKLER CONTRACTOR SHALL SECURE FLOW TEST DATA FROM THE HYDRANT(S) NEAREST THE PROJECT SITE. IF RECENT FLOW TEST DATA IS NOT AVAILABLE FROM VA OR CITY RECORDS, PERFORM THE NECESSARY FLOW TESTS AS REQUIRED BY NFPA STANDARDS TO DETERMINE THE CHARACTER OF THE AVAILABLE WATER SUPPLY, AND SUBMIT THAT DATA WITH THE CALCULATIONS.
- THE SPRINKLER SYSTEM IS DESIGNED IN ACCORDANCE WITH NFPA 13. ALL MATERIAL TO BE UL LISTED, SEVEN WORKING DAYS NOTICE TO OWNER AND/OR REPRESENTATIVE IS REQUIRED PRIOR TO ANY TESTING. ALL TESTING TO BE WITNESSED AND SIGNED BY A REPRESENTATIVE OF THE OWNER. ALL WORK IS TO BE COORDINATED WITH OTHER TRADES PRIOR TO FABRICATION OR INSTALLATION. WHENEVER POSSIBLE, ATTEMPTS HAVE BEEN MADE WITH THIS LAYOUT TO COORDINATE WITH OTHER TRADES, BASED ON ARCHITECT AND ENGINEERS DRAWINGS. HYDRAULIC CALCULATIONS ARE BASED ON THE COMPONENTS AND PIPING AS SHOWN ON FP DRAWINGS. ANY ALTERATIONS WILL CHANGE CALCULATIONS AND SHOULD BE VERIFIED PRIOR TO CHANGE. REFER TO ALL ARCHITECTURAL, MECHANICAL, ELECTRICAL, STRUCTURAL AND SITE PLANS FOR ADDITIONAL INFORMATION. SPRINKLER CONTRACTOR TO SUBMIT MANUFACTURE'S TECHNICAL DATA AND SPECIFICATIONS ON ALL EQUIPMENT USED. THE OWNER IS RESPONSIBLE FOR PROVIDING ADEQUATE HEAT TO PROTECT ALL TYPES OF FIRE PROTECTION SYSTEMS FROM FREEZING AND FROM MECHANICAL DAMAGE. THE OWNER IS RESPONSIBLE FOR MAINTAINING THE PROPER OPERATING CONDITION OF HIGHER SYSTEMS) AND DEVICES. SPRINKLER CONTRACTOR TO INCLUDE REPAIR AND SERVICE FOR A PERIOD OF ONE YEAR FROM COMPLETION AND ACCEPTANCE OF SYSTEM. SPARE SPRINKLER HEADS SHALL BE PROVIDED AND STORED IN A CABINET ON THE PREMISES AS FOLLOWS:
  - (1) 1 TO 300 SPRINKLERS ..... 6 HEADS
  - (2) 301 TO 1000 SPRINKLERS ..... 12 HEADS
  - (3) OVER 1000 SPRINKLERS ..... 24 HEADSHEAD KRENCHES FOR EACH TYPE OF SPRINKLER USED IS TO BE STORED IN CABINET.
- SCOPE OF WORK - SPRINKLER CONTRACTOR IS TO MODIFY AND/OR INSTALL IN ACCORDANCE WITH APPLICABLE CODES, STANDARDS AND SPECIFICATIONS A COMPLETE MET TYPE AUTOMATIC SPRINKLER SYSTEM.
- TO BE PERFORMED IN A WORKMANSHIP LIKE MANNER BY PERSONS TRAINED IN SIMILAR TYPE INSTALLATIONS AND LICENSED, WHERE REQUIRED, BY THE A/E.
- HYDRAULIC INFORMATION IS TO BE PROVIDED AT THE MAIN SPRINKLER RISER ON A HYDRAULIC DATA PLATE.
- EARTHQUAKE BRACING IS TO BE PROVIDED AS PER CODE AND/OR VA DESIGN GUIDES.
- ALL INSPECTOR'S TEST CONNECTIONS AND LOW POINT DRAINS TO BE INSTALLED PER CODES AND STANDARDS. ALL PIPING TO EXTERIOR TO BE GALVANIZED 40.
- ALL HANGERS TO BE INSTALLED PER NFPA AND OTHER APPLICABLE CODES, REFER TO DETAILS FOR ADDITIONAL INFORMATION.
- PIPING TO BE FITTED:
  - MET PIPE SYSTEMS - LEVEL OR SLIGHT PITCH TO DRAIN.
  - DRY PIPE SYSTEMS - MAINS & X-MAINS - 1/4\"/>
- MAIN PIPING - SCH. 10 BLACK STEEL PIPE - CUT, GROOVED AND DEBURRED.
- X-MAINS & BRANCH LINES - SCH. 10 BLACK STEEL PIPE - CUT, REAMED AND THREADED, DRY SYSTEM PIPING TO BE GALVANIZED.
- PIPE JOINT COMPOUND APPLIED TO MALE THREADS ONLY.
- PROVIDE SPARE HEAD CABINET WITH A MINIMUM OF 2 OF EACH TYPE OF SPRINKLER HEAD USED.
- SYSTEM TO BE HYDROSTATICALLY TESTED @ 200PSI FOR 2 HOURS - PER NFPA #13.
- LOW POINTS OF SYSTEM SHALL HAVE PROVISIONS FOR PROPER DRAINAGE.

### SPRINKLER SYSTEM NOTES

- FIRE PROTECTION CONTRACTOR SHALL VISIT THE SITE PRIOR TO BIDDING AND FULLY FAMILIARIZE HIMSELF WITH THE EXISTING CONDITIONS. ANY DEVIATIONS OR DISCREPANCIES BETWEEN THESE DRAWINGS AND ACTUAL EXISTING CONDITIONS SHALL BE PROMPTLY BROUGHT TO THE ATTENTION OF THE ARCHITECT FOR CLARIFICATION. BID SHALL INCLUDE ALL COSTS DUE TO EXISTING CONDITIONS.
- FIRE PROTECTION CONTRACTOR SHALL DESIGN AND INSTALL THE REQUIRED NEW SYSTEM OR MODIFICATIONS TO THE EXISTING HYDRAULICALLY CALCULATED MET PIPE SPRINKLER SYSTEM FOR THE ENTIRE DEEMED SPACE INDICATED HEREIN THESE DOCUMENTS. THE SYSTEM SHALL BE DESIGNED AND INSTALLED IN ACCORDANCE WITH THE REQUIREMENTS OF NFPA-13 FOR ORDINARY HAZARD GROUP I OCCUPANCY, (UNLESS NOTED OTHERWISE PROVIDING A SPRINKLER DENSITY OF 0.15 GPM/SQ FT OVER THE MOST REMOTE 1000 SQFT).
- FIRE PROTECTION CONTRACTOR SHALL PREPARE AND FILE SPRINKLER SHOP DRAWINGS AND HYDRAULIC CALCULATIONS WITH THE VA, COR, AND ENGINEER, AND SHALL RECEIVE ALL NECESSARY APPROVALS PRIOR TO COMMENCEMENT OF ANY INSTALLATION WORK.
- CONSTRUCTION DOCUMENTS FOR FIRE PROTECTION / SPRINKLER SYSTEMS ARE TO BE SUBMITTED FOR APPROVAL PRIOR TO INSTALLATION BY SPRINKLER CONTRACTOR UNDER SEPARATE PERMIT APPLICATION. FIRE PROTECTION SYSTEMS ARE TO BE MAINTAINED IN ACCORDANCE WITH ORIGINAL INSTALLATION STANDARDS. REQUIRED FIRE PROTECTION SYSTEM SHALL BE MODIFIED AS NECESSARY TO MAINTAIN PROTECTION WHENEVER BUILDING IS ALTERED.
- FOR EXISTING SYSTEM REMOVE OR RELOCATE EXISTING SPRINKLER HEADS AND FURNISH AND INSTALL NEW AS PER NFPA-13 RECOMMENDATIONS, TO PROVIDE ADEQUATE COVERAGE OF THE ENTIRE DEEMED PREMISES, AND AS SPECIFIED/SHOWN.
- THE FIRE PROTECTION CONTRACTOR SHALL BE RESPONSIBLE FOR OBTAINING FLOW TEST DATA AND PREPARING HYDRAULIC CALCULATIONS.
- NEW SPRINKLER HEADS SHALL BE APPROVED STANDARD TYPES, PENDENT AND UPRIGHT, AND DESIGNED FOR CORRECT COVERAGE. CHARGE PLATED "TYCO", "GRINELL", "VIKING", "STARR" OR EQUAL. SEE PLANS FOR SPRINKLER HEAD TYPES.
- ALL SPRINKLER WORK SHALL COMPLY WITH ALL NFPA-13 RECOMMENDATIONS, AND SHALL BE PERFORMED IN ACCORDANCE WITH THE RULES AND REGULATIONS OF THE VA.
- ALL SPRINKLER SYSTEM WORK SHALL BE SUBJECT TO THE ACCEPTANCE AND APPROVAL OF THE OWNER'S INSURERS AND SHALL BE DESIGNED TO SECURE THE BEST POSSIBLE INSURANCE RATES ON THE BUILDING AND ITS CONTENTS.
- FIRE PROTECTION CONTRACTOR SHALL FILE FOR, OBTAIN AND PAY FOR ALL REQUIRED PERMITS AND INSPECTIONS.
- FIRE PROTECTION CONTRACTOR SHALL ARRANGE FOR ANY SHUTDOWNS OF THE EXISTING SYSTEM WITH THE VA, COR, AND LOCAL FIRE DEPARTMENT REPRESENTATIVE, AND SHALL SECURE IN WRITING PRIOR TO SHUTDOWN APPROVALS FROM SAME. ADDITIONALLY, THE FIRE PROTECTION CONTRACTOR SHALL PAY FOR ANY LABOR, MATERIALS, AND FEES NECESSARY FOR SHUTDOWN.
- IN THE EVENT OF THE FIRE PROTECTION SYSTEM BEING "OUT OF SERVICE", THE FIRE DEPARTMENT & VACOR SHALL BE NOTIFIED IMMEDIATELY, AND IF REQUIRED BY VA, SAID BUILDING TO BE EVACUATED OR PROVIDED WITH AN APPROVED FIRE WATCH SYSTEM WILL BE PROVIDED FOR ALL UNPROTECTED OCCUPANTS UNTIL SYSTEM IS RETURNED TO SERVICE.
- WHEN UTILIZED, FIRE WATCHES SHALL BE PROVIDED BY MIN. OF ONE APPROVED MEANS OF NOTIFICATION OF THE FIRE DEPT. THE ONLY DUTY OF THE FIRE WATCH IS TO PERFORM CONSTANT PATROLS OF THE PREMISES AND KEEP WATCH FOR FIRES.
- FIRE PROTECTION CONTRACTOR SHALL CAREFULLY EXAMINE ALL EXISTING SPRINKLER SYSTEM PIPING AND COMPONENTS, AND SHALL REPAIR OR REPLACE ANY LEAKING OR DEFECTIVE PIPING OR COMPONENTS.
- SPRINKLER PIPE MATERIAL AND INSTALLATION SHALL MATCH EXISTING.
- FIRE PROTECTION CONTRACTOR SHALL PROVIDE ALL REQUIRED TEST AND DRAIN CONNECTIONS, WHETHER OR NOT THEY ARE INDICATED HEREON THESE PLANS.
- FIRE PROTECTION CONTRACTOR SHALL PROVIDE AND INSTALL ALL NECESSARY ALARM INITIATING DEVICES AND SUPERVISORY DEVICES, AND SHALL COORDINATE THE ELECTRICAL REQUIREMENTS FOR THEM WITH THE E.G. AND/OR FIRE ALARM CONTRACTOR FOR THEIR CONNECTION TO THE FIRE ALARM SYSTEM.
- FIRE PROTECTION CONTRACTOR IS RESPONSIBLE FOR ALL DAMAGES TO ANY PORTION OF THE EXISTING SPRINKLER SYSTEM ON ANY PORTION OF THE BUILDING INCURRED BY HIM DURING CONSTRUCTION.
- UPON COMPLETION OF THE INSTALLATION, FIRE PROTECTION CONTRACTOR SHALL DEMONSTRATE TO THE SATISFACTION OF THE COR AND THE OWNER'S INSURANCE UNDERWRITERS, THE OPERATION OF THE ENTIRE PROTECTION SYSTEM, INCLUDING ALL ALARM INITIATING DEVICES AND SYSTEM SUPERVISORY DEVICES.
- PRIOR TO REQUESTING FINAL APPROVAL, THE SPRINKLER CONTRACTOR SHALL FURNISH A WRITTEN STATEMENT TO THE COR INDICATING THAT THE FIRE PROTECTION SYSTEM HAS BEEN INSTALLED PER APPROVED PLANS, AND HAS BEEN TESTED AS REQUIRED. ANY EXCEPTIONS FROM THE DESIGN STANDARDS SHALL BE NOTED AND COPIES OF APPROVALS ATTACHED TO THE FORE MENTIONED WRITTEN STATEMENT.
- ANY DUCTS OR OTHER OBSTRUCTIONS BELOW SPRINKLER HEADS WHICH EXCEED 4'-0" SHALL BE PROTECTED WITH A SEPARATE SPRINKLER LINE UNDER THE OBSTRUCTION.
- COORDINATE INSTALLATION OF SPRINKLER WORK WITH ALL OTHER TRADES INVOLVED. PROVIDE ADEQUATE CLEARANCE AROUND EQUIPMENT FOR OPERATION AND MAINTENANCE.



### SEISMIC BRACING NOTES:

- ALL PIPING 2-1/2 IN. NOMINAL DIAMETER AND LARGER MUST BE BRACED.
- TRANSVERSE AND VERTICAL BRACING SHALL OCCUR AT 40 FT. INTERVALS (MAX) AND LONGITUDINAL BRACING AT 80 FT. INTERVALS (MAX).
- BRACING IS NOT REQUIRED FOR PIPING SUSPENDED BY HANGERS 12 IN. OR LESS IN LENGTH AS MEASURED FROM THE TOP OF THE PIPE TO THE BOTTOM OF THE SUPPORT WHERE THE HANGER IS ATTACHED.

### NOTE:

THIS SPRINKLER DRAWING IS INTENDED FOR PRICING PURPOSES ONLY. THE FIRE PROTECTION CONTRACTOR SHALL PREPARE A COMPLETE SET OF WORKING FIRE PROTECTION DRAWINGS IN ACCORDANCE WITH NFPA-13, AND ALL VA AND LOCAL REQUIREMENTS. PIPE SIZES SHALL BE DETERMINED BY HYDRAULIC CALCULATIONS USING THE CURRENT SITE SPECIFIC FLOW DATA.

### DRAWING SYMBOLS

- 2 PL105: DETAIL NUMBER, DRAWING NUMBER WHERE DRAWN
- CROSS HATCHED AREAS ARE NOT IN CONTRACT AND ARE EXISTING TO REMAIN, UNLESS SPECIFICALLY NOTED OR SHOWN OTHERWISE.
- E.T.R.
- THIS SYMBOL SHOWS THE APPROXIMATE POINT WHERE NEW WORK STARTS AND EXISTING IS TO REMAIN FOR DEMOLITION THIS SYMBOL SHOW THE APPROXIMATE POINT WHERE DEMOLITION STOPS AND EXISTING IS TO REMAIN FOR REVISED WORK.

### DRAWINGS AND CALCULATIONS:

- THE SPRINKLER CONTRACTOR SHALL PREPARE SUBMITTAL DRAWINGS AND HYDRAULIC CALCULATIONS FOR THE SPACE IN ACCORDANCE WITH THE OWNER'S INSURANCE COMPANY, AND LOCAL FIRE AUTHORITY REQUIREMENTS.
- THE SPRINKLER SYSTEM SHALL BE DESIGNED FOR ORDINARY HAZARD (GROUP I) OCCUPANCY, PROVIDING A DENSITY OF 0.15 GPM/SQ FT OVER THE MOST REMOTE 1000 SQUARE FOOT AREA.
- THE SPRINKLER CONTRACTOR SHALL SECURE FLOW TEST DATA FROM THE HYDRANT(S) NEAREST THE PROJECT SITE. IF RECENT FLOW TEST DATA IS NOT AVAILABLE FROM LANDLORD OR CITY RECORDS, PERFORM THE NECESSARY FLOW TESTS AS REQUIRED BY NFPA STANDARDS TO DETERMINE THE CHARACTER OF THE AVAILABLE WATER SUPPLY, AND SUBMIT THAT DATA WITH THE CALCULATIONS.

### DRAWING INDEX

DRAWING No.	DRAWING TITLE
FP001	FIRE SPRINKLER NOTES AND DETAILS
FP100	TUNNEL FIRE SPRINKLER PLAN
FP101	LEVEL 1 FIRE SPRINKLER PLAN

CONSULTANTS		ARCHITECT/ENGINEER OF RECORD		Drawing Title		Phase		Project Title		Project Number	
Electrical Heapy Engineering 1400 W. Dorothy Lane Dayton OH 45409 Tel: 618.529.5262 Matt Graham		Industrial Hygienist John A Jurgiel & Assoc. 123 N. Main Street St. Charles, MO 63301 Tel: 636.757.3060 636.757.3064		Department of Veteran's Affairs Medical Center Jefferson Barracks Division		100% Construction Documents		Renovate Nutrition Center and Food Services		Building Number 60	
Revisions:		Date:		Approved:		FULLY SPRINKLERED		Location 1 Jefferson Barracks Dr. , Building 60 St. Louis, MO 63125		Drawing Number FP001	
								Issue Date March 29, 2018		Checked DH	
										Drawn BZ	



GENERAL NOTES:

1. NO FIRE SPRINKLER PROTECTION IS REQUIRED IN TUNNEL UNLESS NOTED OTHERWISE.

PLAN NOTES:

1. NEW 4"FP UP TO FDC; SEE SHEET FP101 FOR CONTINUATION.
2. ROUTE NEW FP UNDER EXISTING STEAM PIPING NEXT CEILING OF TUNNEL.
3. NEW 4"FP UP TO RISER, SEE SHEET FP101 FOR CONTINUATION.
4. SEE PICTURE A/FP100 FOR VIEW OF TUNNEL TOWARDS PIT ACCESS.
5. SEE PICTURE B/FP100 FOR VIEW OF TUNNEL TOWARDS NORTH.
6. SEE PICTURE C/FP100 FOR VIEW OF TUNNEL TOWARDS NORTH.
7. SEE PICTURE D/FP100 FOR VIEW OF TUNNEL TOWARDS NORTH.



A TUNNEL PICTURE  
N.T.S.



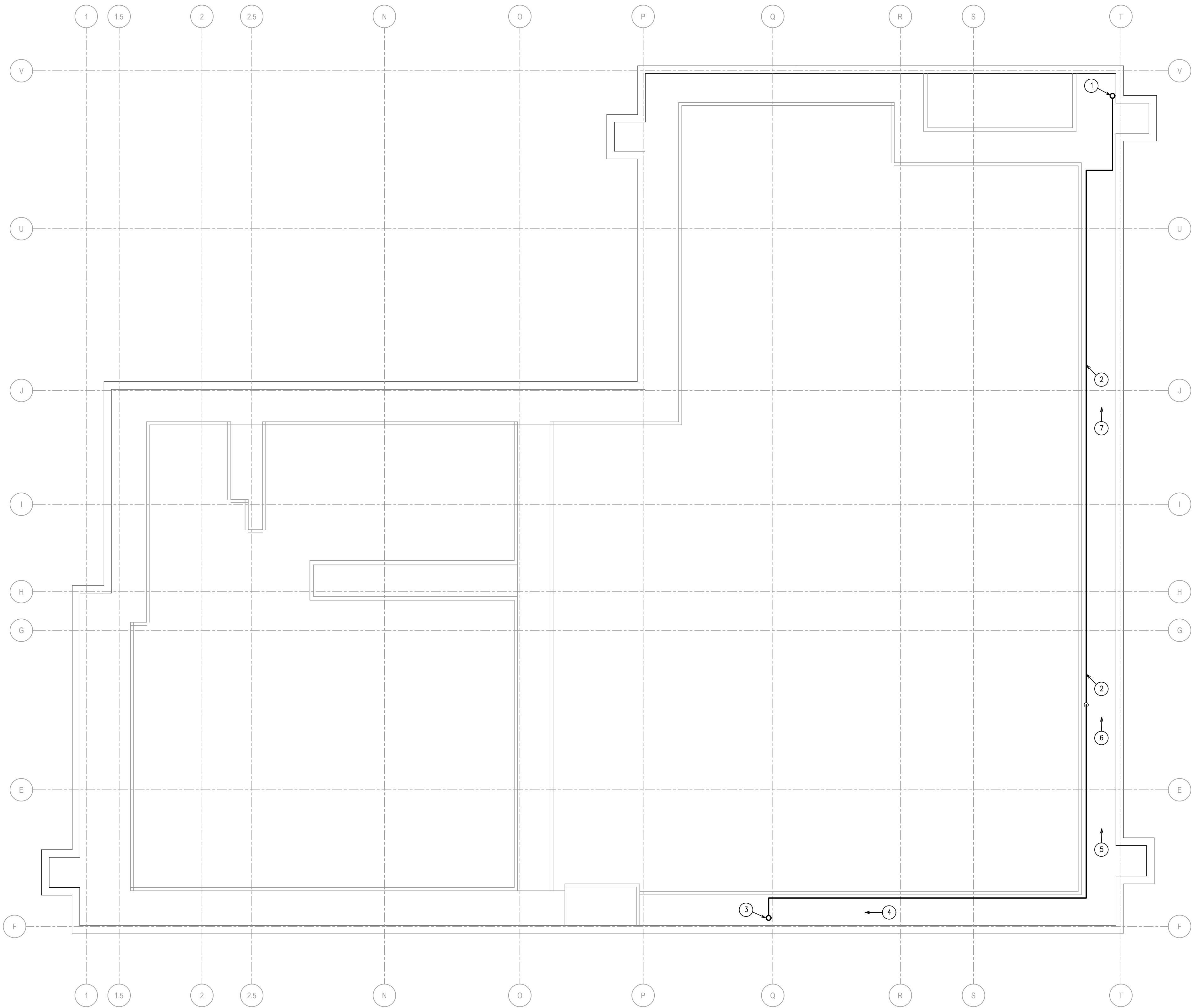
B TUNNEL PICTURE  
N.T.S.



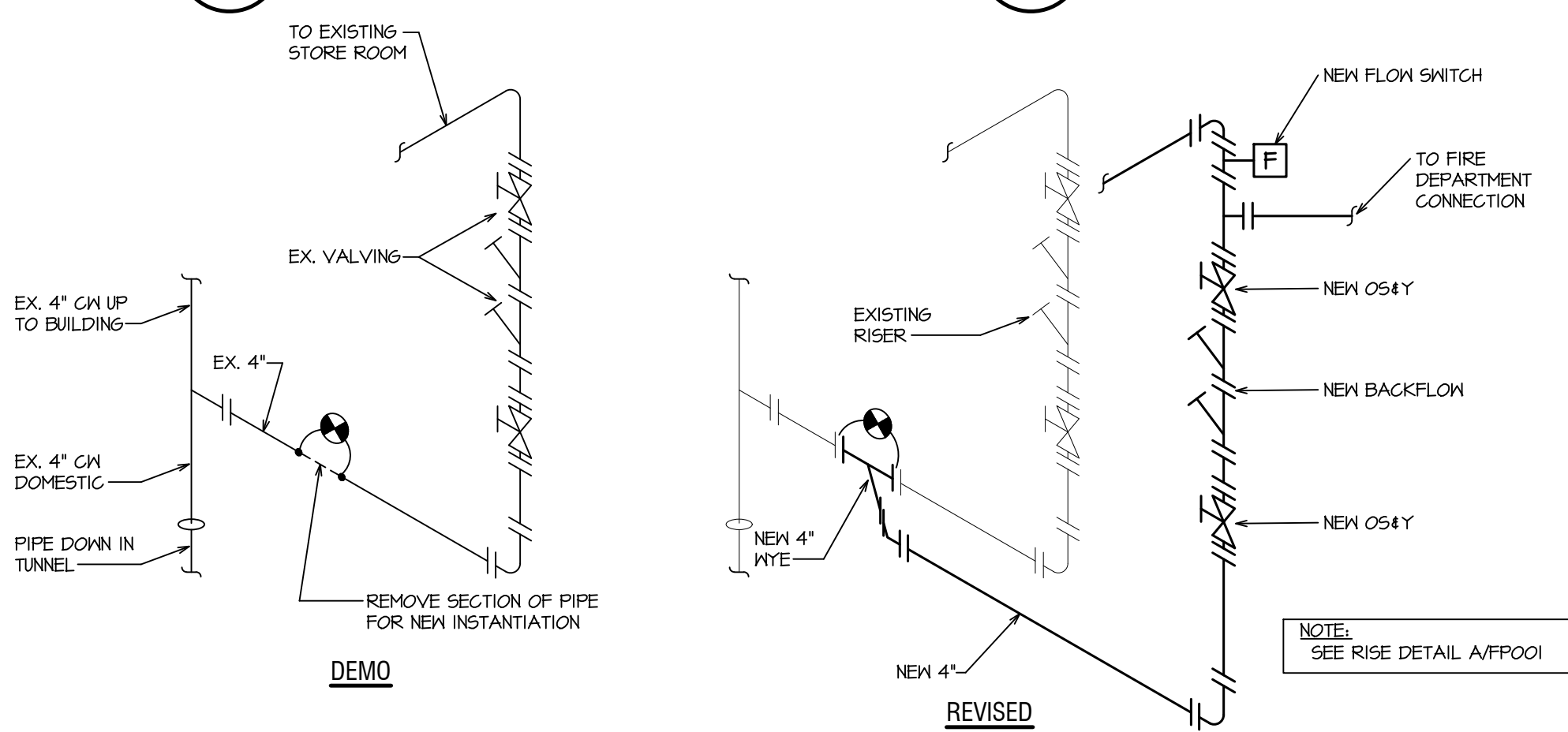
C TUNNEL PICTURE  
N.T.S.



D TUNNEL PICTURE  
N.T.S.



F4 TUNNEL FIRE SPRINKLER PLAN  
1/8" = 1'-0"



E FIRE SPRINKLER RISER  
N.T.S.

--	--	--	--	--	--	--	--	--	--	--	--	--	--	--	--	--	--	--	--	--	--	--	--	--	--	--	--	--	--	--	--	--	--	--	--	--	--	--	--	--	--	--	--	--	--	--	--	--	--	--	--	--	--	--	--	--	--	--	--	--	--	--	--	--	--	--	--	--	--	--	--	--	--	--	--	--	--	--	--	--	--	--	--	--	--	--	--	--	--	--	--	--	--	--	--	--	--	--	--	--	--	--	--	--	--	--	--	--	--	--	--	--	--	--	--	--	--	--	--	--	--	--	--	--	--	--	--	--	--	--	--	--	--	--	--	--	--	--	--	--	--	--	--	--	--	--	--	--	--	--	--	--	--	--	--	--	--	--	--	--	--	--	--	--	--	--	--	--	--	--	--	--	--	--	--	--	--	--	--	--	--	--	--	--	--	--	--	--	--	--	--	--	--	--	--	--	--	--	--	--	--	--	--	--	--	--	--	--	--	--	--	--	--	--	--	--	--	--	--	--	--	--	--	--	--	--	--	--	--	--	--	--	--	--	--	--	--	--	--	--	--	--	--	--	--	--	--	--	--	--	--	--	--	--	--	--	--	--	--	--	--	--	--	--	--	--	--	--	--	--	--	--	--	--	--	--	--	--	--	--	--	--	--	--	--	--	--	--	--	--	--	--	--	--	--	--	--	--	--	--	--	--	--	--	--	--	--	--	--	--	--	--	--	--	--	--	--	--	--	--	--	--	--	--	--	--	--	--	--	--	--	--	--	--	--	--	--	--	--	--	--	--	--	--	--	--	--	--	--	--	--	--	--	--	--	--	--	--	--	--	--	--	--	--	--	--	--	--	--	--	--	--	--	--	--	--	--	--	--	--	--	--	--	--	--	--	--	--	--	--	--	--	--	--	--	--	--	--	--	--	--	--	--	--	--	--	--	--	--	--	--	--	--	--	--	--	--	--	--	--	--	--	--	--	--	--	--	--	--	--	--	--	--	--	--	--	--	--	--	--	--	--	--	--	--	--	--	--	--	--	--	--	--	--	--	--	--	--	--	--	--	--	--	--	--	--	--	--	--	--	--	--	--	--	--	--	--	--	--	--	--	--	--	--	--	--	--	--	--	--	--	--	--	--	--	--	--	--	--	--	--	--	--	--	--	--	--	--	--	--	--	--	--	--	--	--	--	--	--	--	--	--	--	--	--	--	--	--	--	--	--	--	--	--	--	--	--	--	--	--	--	--	--	--	--	--	--	--	--	--	--	--	--	--	--	--	--	--	--	--	--	--	--	--	--	--	--	--	--	--	--	--	--	--	--	--	--	--	--	--	--	--	--	--	--	--	--	--	--	--	--	--	--	--	--	--	--	--	--	--	--	--	--	--	--	--	--	--	--	--	--	--	--	--	--	--	--	--	--	--	--	--	--	--	--	--	--	--	--	--	--	--	--	--	--	--	--	--	--	--	--	--	--	--	--	--	--	--	--	--	--	--	--	--	--	--	--	--	--	--	--	--	--	--	--	--	--	--	--	--	--	--	--	--	--	--	--	--	--	--	--	--	--	--	--	--	--	--	--	--	--	--	--	--	--	--	--	--	--	--	--	--	--	--	--	--	--	--	--	--	--	--	--	--	--	--	--	--	--	--	--	--	--	--	--	--	--	--	--	--	--	--	--	--	--	--	--	--	--	--	--	--	--	--	--	--	--	--	--	--	--	--	--	--	--	--	--	--	--	--	--	--	--	--	--	--	--	--	--	--	--	--	--	--	--	--	--	--	--	--	--	--	--	--	--	--	--	--	--	--	--	--	--	--	--	--	--	--	--	--	--	--	--	--	--	--	--	--	--	--	--	--	--	--	--	--	--	--	--	--	--	--	--	--	--	--	--	--	--	--	--	--	--	--	--	--	--	--	--	--	--	--	--	--	--	--	--	--	--	--	--	--	--	--	--	--	--	--	--	--	--	--	--	--	--	--	--	--	--	--	--	--	--	--	--	--	--	--	--	--	--	--	--	--	--	--	--	--	--	--	--	--	--	--	--	--	--	--	--	--	--	--	--	--	--	--	--	--	--	--	--	--	--	--	--	--	--	--	--	--	--	--	--	--	--	--	--	--	--	--	--	--	--	--	--	--	--	--	--	--	--	--	--	--	--	--	--	--	--	--	--	--	--	--	--	--	--	--	--	--	--	--	--	--	--	--	--	--	--	--	--	--	--	--	--	--	--	--	--	--	--	--	--	--	--	--	--	--	--	--	--	--	--	--	--	--	--	--	--	--	--	--	--	--	--	--	--	--	--	--	--	--	--	--	--	--	--	--	--	--	--	--	--	--	--	--	--	--	--	--	--	--	--	--	--	--	--	--	--	--	--	--	--	--	--	--	--	--	--	--	--	--	--	--	--	--	--	--	--	--	--	--	--	--	--	--	--	--	--	--	--	--	--	--	--	--	--	--	--	--	--	--	--	--	--	--	--	--	--	--	--	--	--	--	--	--	--	--	--	--	--	--	--	--	--	--	--	--	--	--	--	--	--	--	--	--	--	--	--	--	--	--	--	--	--	--	--	--	--	--	--	--	--	--	--	--	--	--	--	--	--	--	--	--	--	--	--	--	--	--	--	--	--	--	--	--	--	--	--	--	--	--	--	--	--	--	--	--	--	--	--	--	--	--	--	--	--	--	--	--	--	--	--	--	--	--	--	--	--	--	--	--	--	--	--	--	--	--	--	--	--	--	--	--	--	--	--	--	--	--	--	--	--	--	--	--	--	--	--	--	--	--	--	--	--	--	--	--	--	--	--	--	--	--	--	--	--	--	--	--	--	--	--	--	--	--	--	--	--	--	--	--	--	--	--	--	--	--	--	--	--	--	--	--	--	--	--	--	--	--	--	--	--	--	--	--	--	--	--	--	--	--	--	--	--	--	--	--	--	--	--	--	--	--	--	--	--	--	--	--	--	--	--	--	--	--	--	--	--	--	--	--	--	--	--	--	--	--	--	--	--	--	--	--	--	--	--	--	--	--	--	--	--	--	--	--	--	--	--	--	--	--	--	--	--	--	--	--	--	--	--	--	--	--	--	--	--	--	--	--	--	--	--	--	--	--	--	--	--	--	--	--



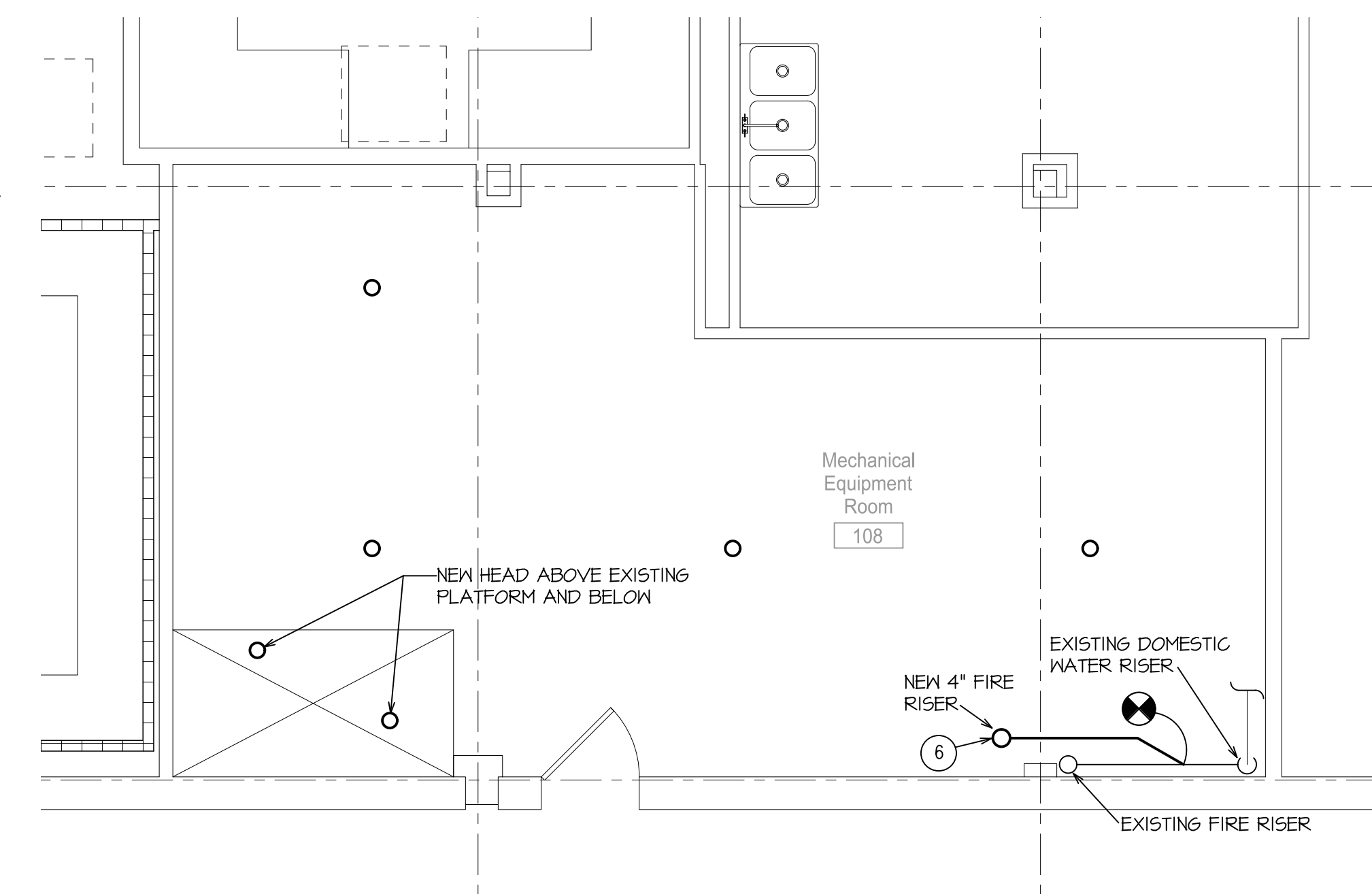


GENERAL NOTES:

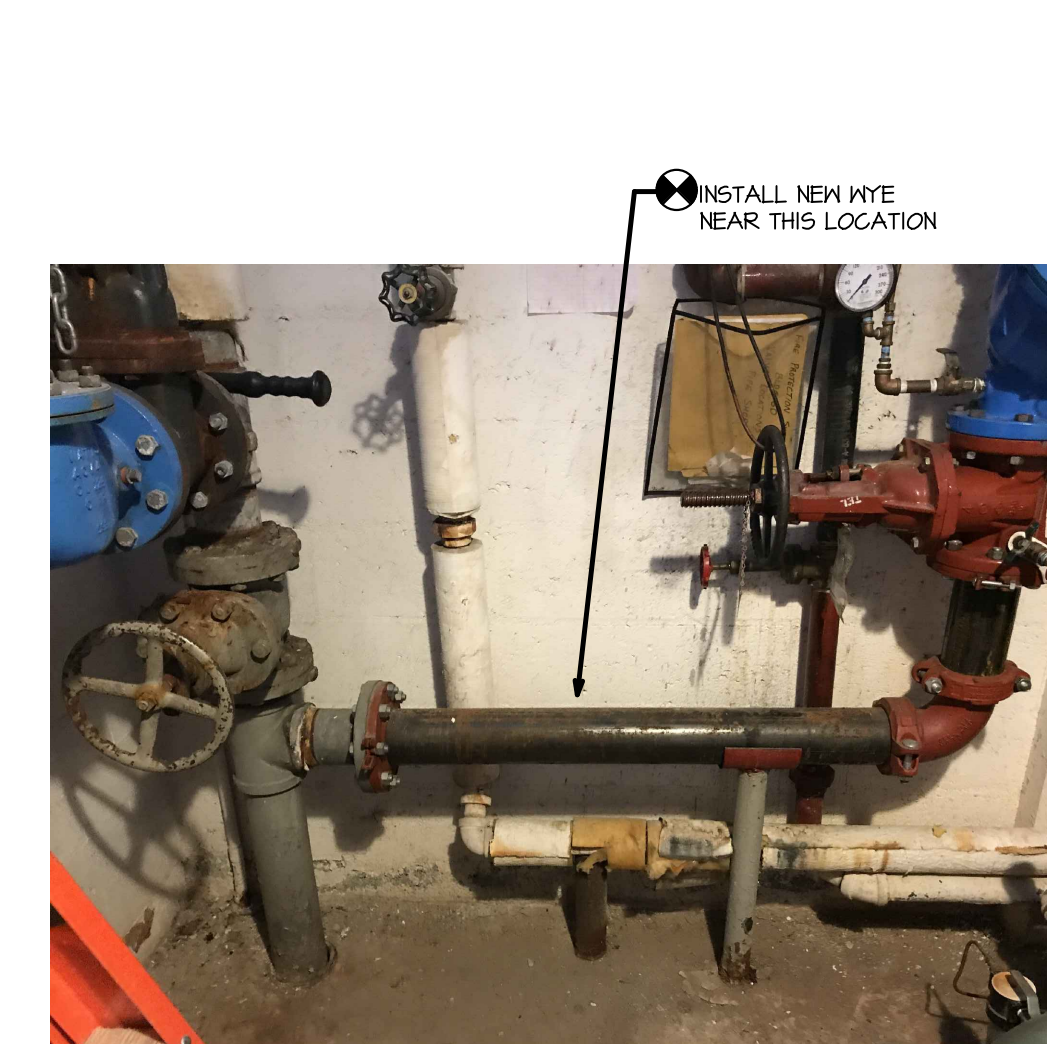
1. COORDINATE WORK INSTALLATION WITH MECHANICAL AND ELECTRICAL CONTRACTORS.

PLAN NOTES:

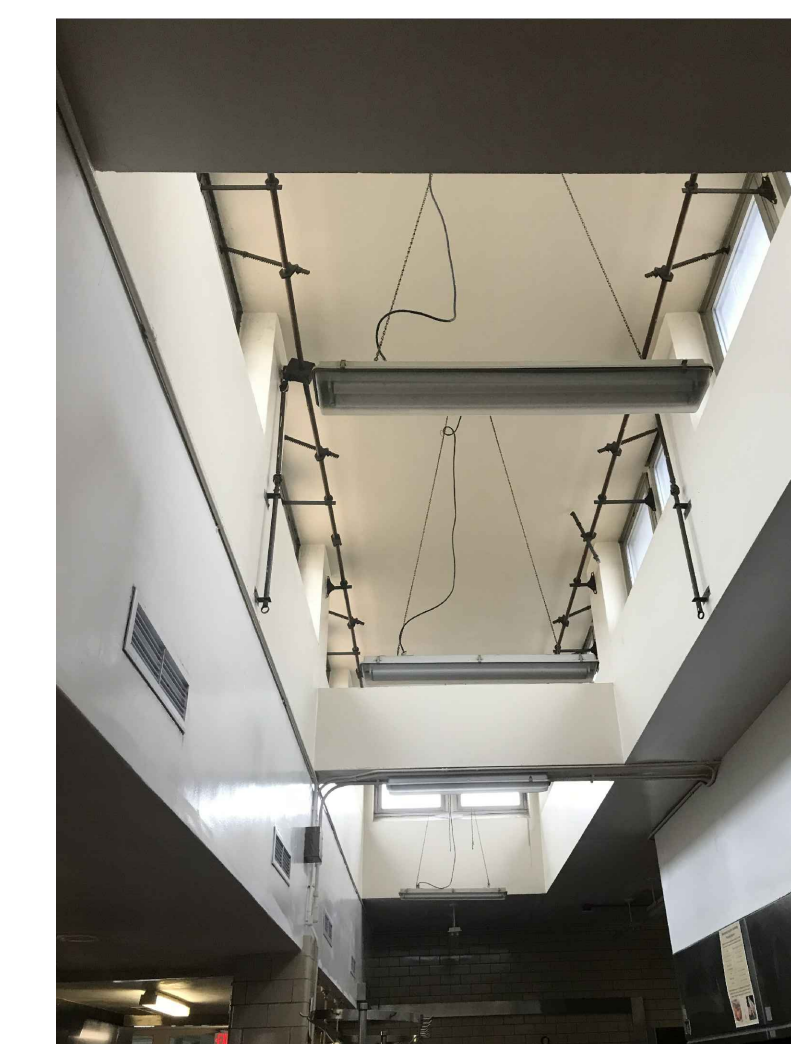
- 1 SEE PICTURE A/F/F01 FOR VIEW OF EXISTING SPRINKLER RISER.
- 2 SEE PICTURE B/F/F01 FOR VIEW OF EXISTING CLEARGLASTOY TO BE SPRINKLERED.
- 3 SEE PICTURE C/F/F01 FOR VIEW OF TYPICAL KITCHEN TO BE SPRINKLERED.
- 4 LINE OF BULK HEAD, SEE ARCHITECTURAL SHEET A101.
- 5 EXISTING EXPOSED DRYWALL CEILING, SEE ARCHITECTURAL SHEET A101.
- 6 SEE TYPICAL RISER DETAIL A/F/F01 AND DETAIL E/F/F01.
- 7 NEW 4"HP DOWN INTO TUNNEL. CORE DRILL FLOOR AS REQUIRED.
- 8 NEW FIRE DEPARTMENT CONNECTION, VERIFY WITH V&A AND LOCAL FIRE DEPARTMENT ON TYPE OF CONNECTION REQUIRED.
- 9 EXISTING SPRINKLER PIPING AND HEADS TO REMAIN.



**B8** ENLARGED PLAN  
1/4" = 1'-0"



**A** EXISTING RISER PICTURE  
N.T.S.



**B** CLEARSTORY PICTURE  
N.T.S.



**C** KITCHEN PICTURE  
N.T.S.

		CONSULTANTS		ARCHITECT/ENGINEER OF RECORD				Drawing Title <b>LEVEL 1 FIRE SPRINKLER PLAN</b>		Project Title <b>100% Construction Documents</b>		Phase <b>100% Construction Documents</b>		Project Title Renovate Nutrition Center and Food Services		Project Number Building Number 60	
		Electrical Heavy Engineering 1400 W. Dorothy Lane Dayton OH 45409 Tel 618.529.5262 Matt Graham		Industrial Hygienist John A Jurgiel & Assoc. 123 N. Main Street St. Charles, MO 63301 Tel 636.757.3060 636.757.3064		   		1 S. Memorial Dr. Suite 1800 St. Louis, MO 63102 (314) 621 - 4343 Bob Dunn bdunn@fox-arch.com		Approved:		Location 1 Jefferson Barracks Dr., Building 60 St. Louis, MO 63125		Drawing Number <b>FP101</b>			
Revisions:		Date:								<b>FULLY SPRINKLERED</b>		Issue Date March 29, 2018		Checked DH		Drawn BZ	