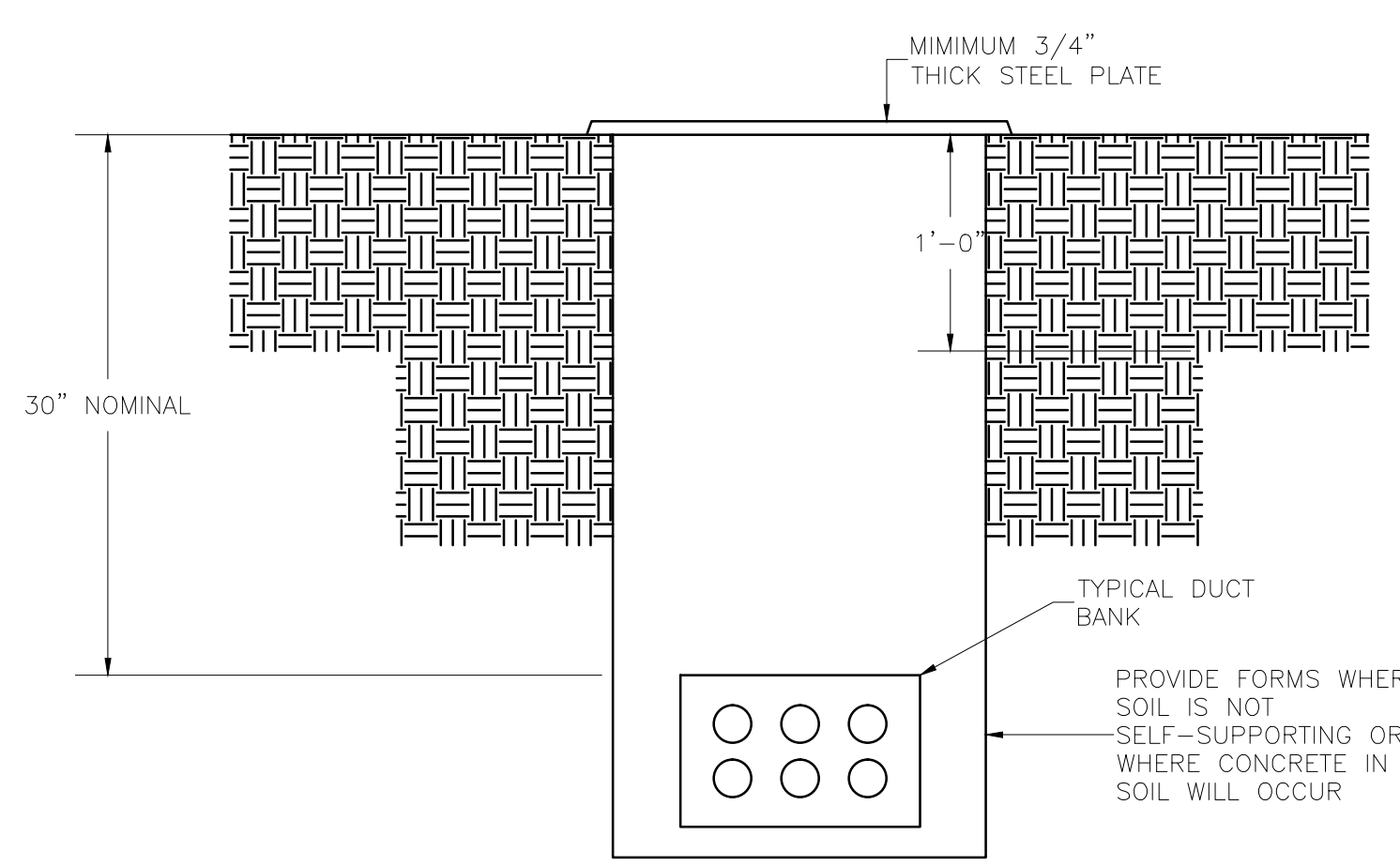
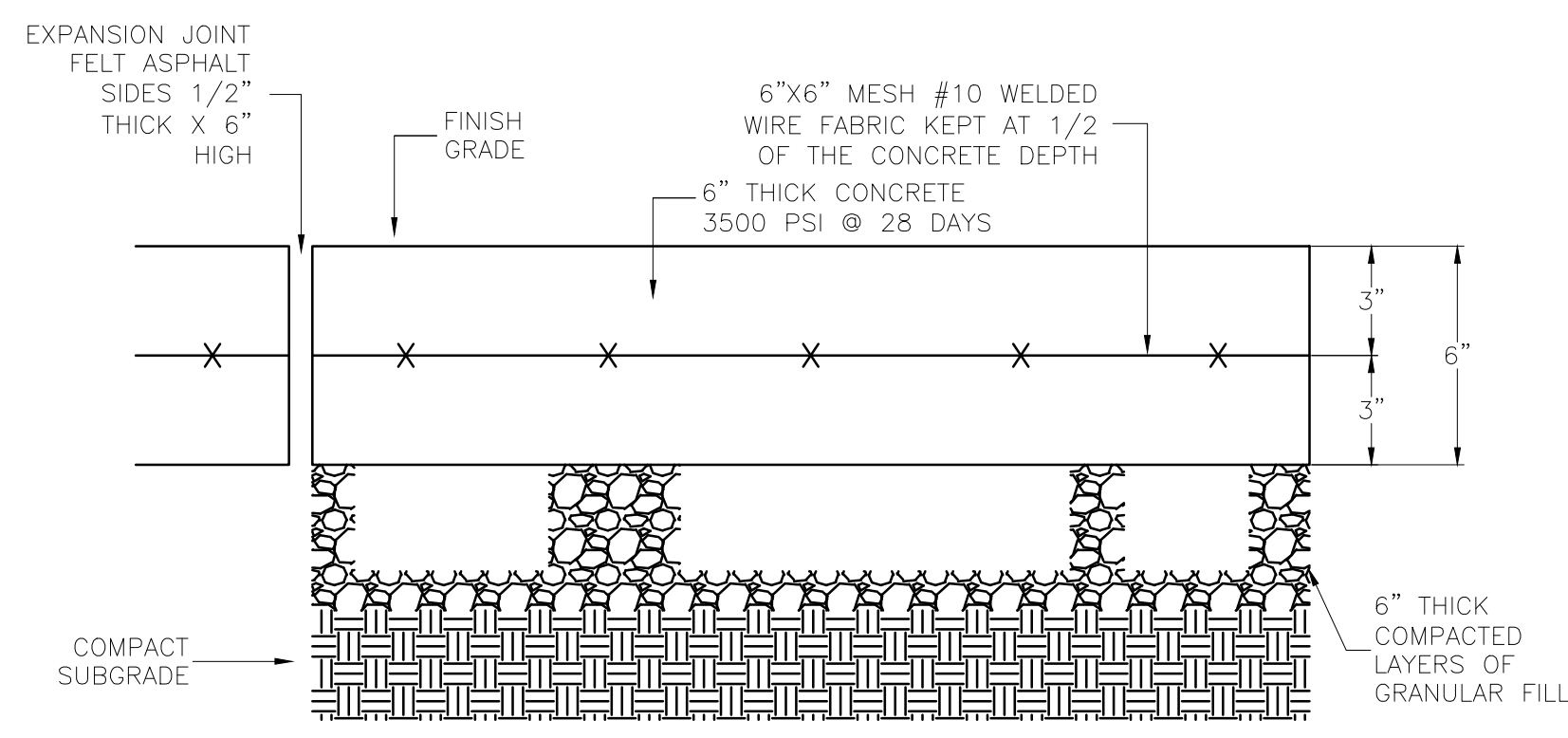


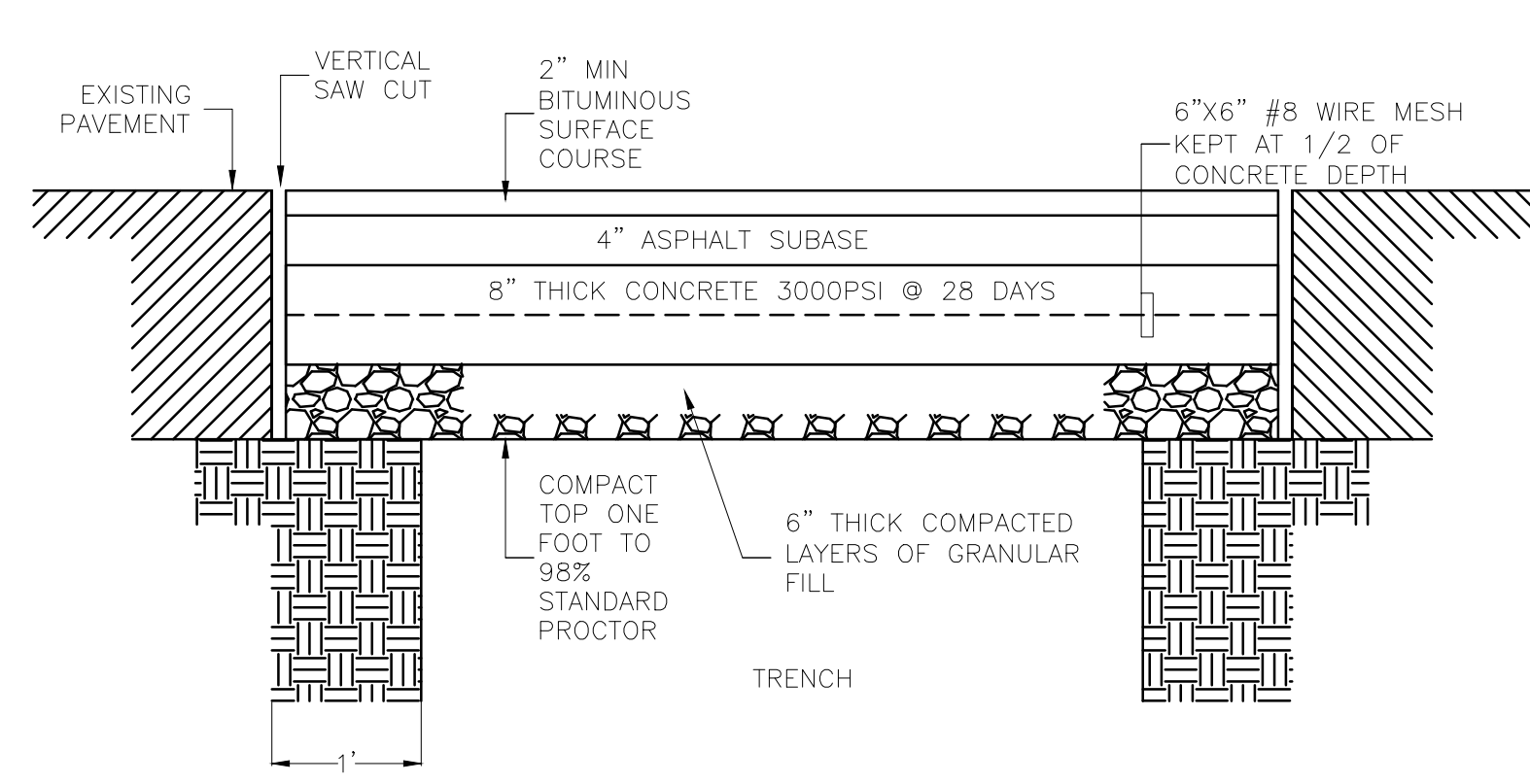
three inches = one foot  
one and one half inches = one foot  
one inch = one foot  
three quarters inch = one foot  
one half inch = one foot  
three eighths inch = one foot  
one quarter inch = one foot  
one eighth inch = one foot



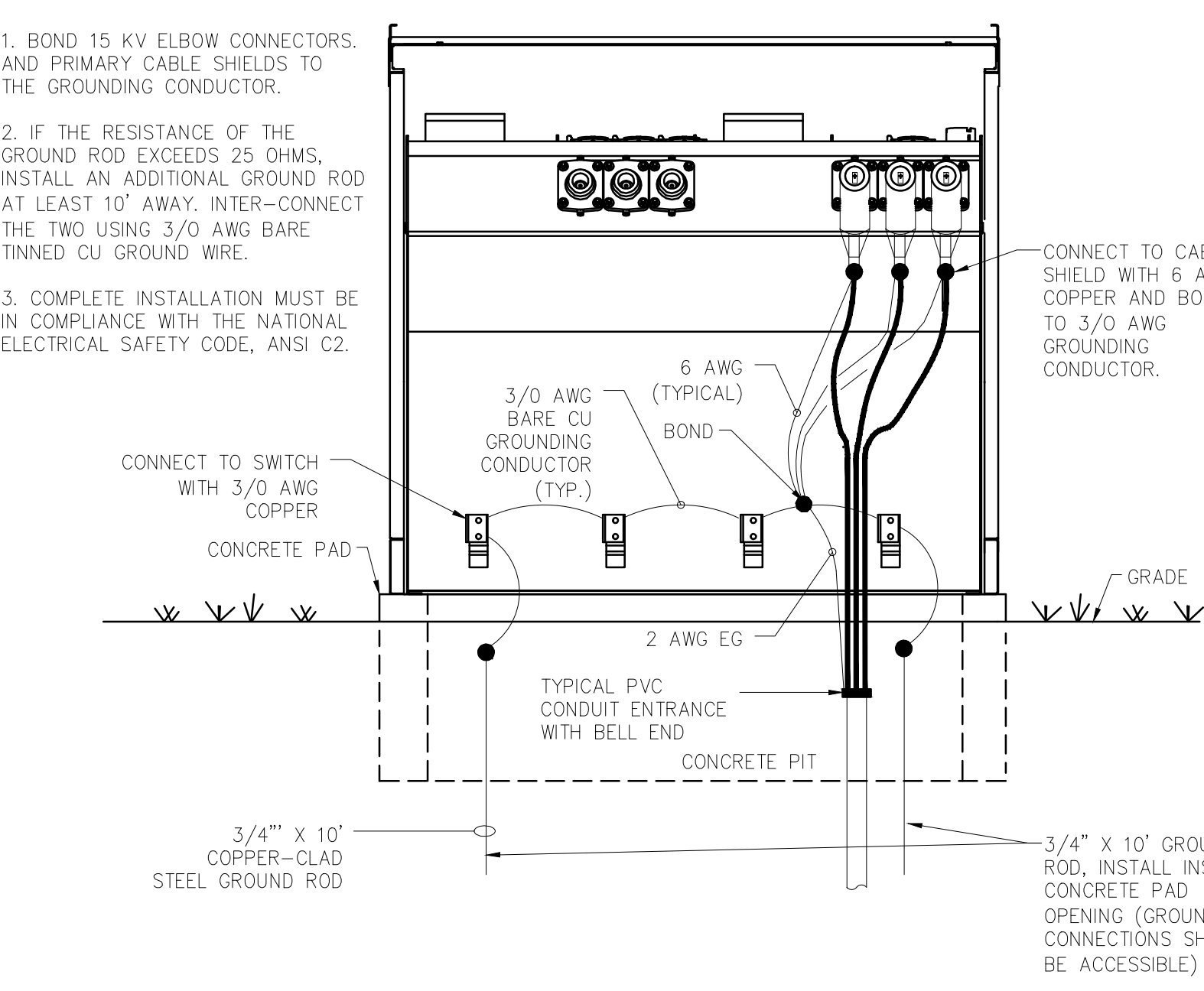
1 STEEL PLATE COVER ON TRENCH  
E-501 SCALE: NTS



5 REPLACEMENT SIDEWALK DETAIL  
E-501 SCALE: NTS

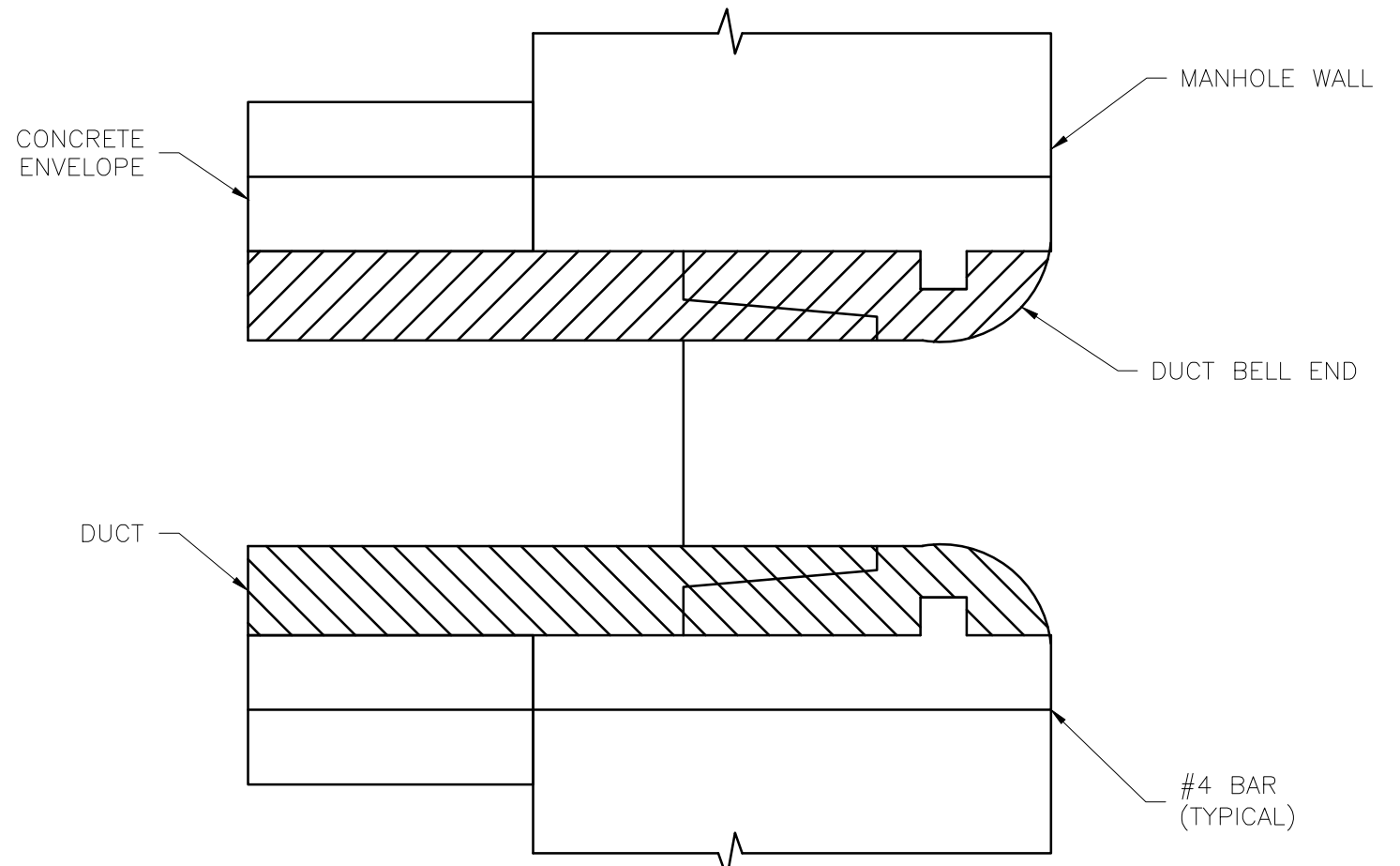


8 TYPICAL UTILITY TRENCH IN EXISTING PAVEMENT  
E-501 SCALE: NTS

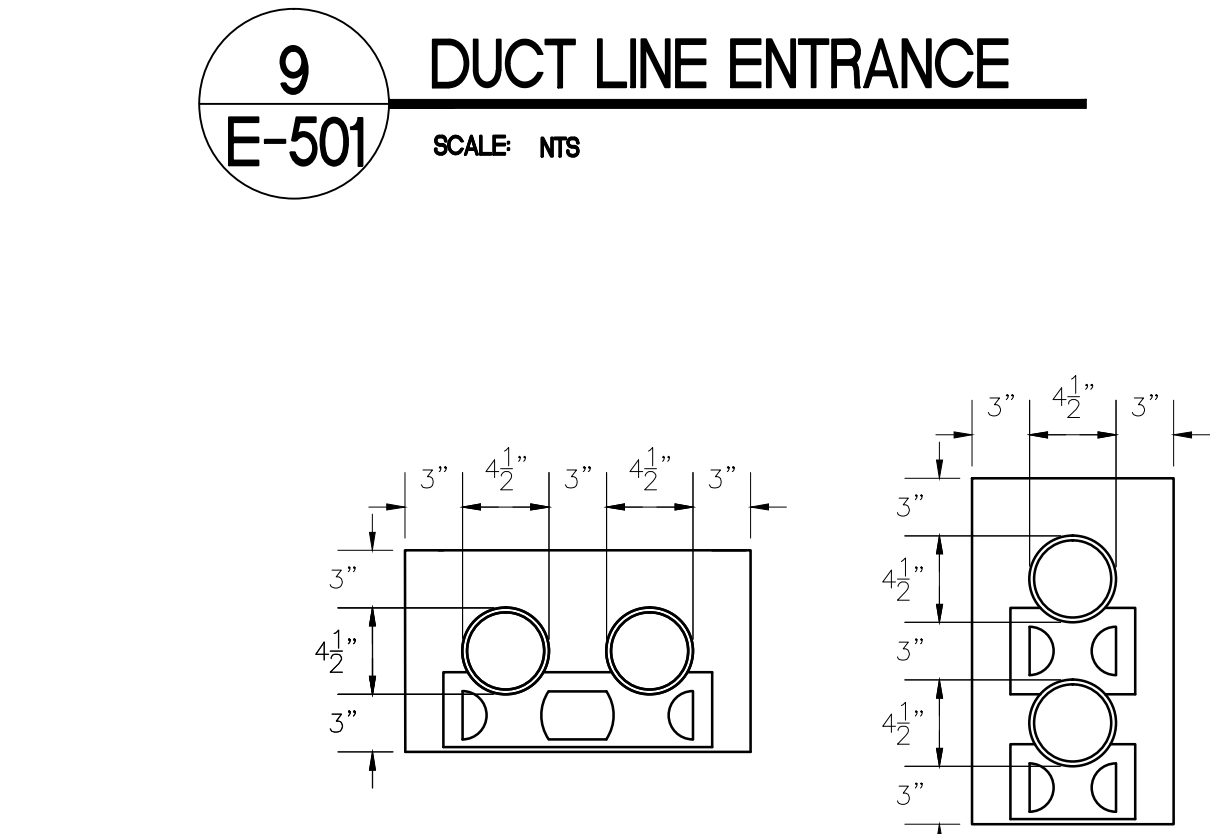


14 ELECTRICAL SWITCHGEAR GROUNDING  
E-501 SCALE: NTS

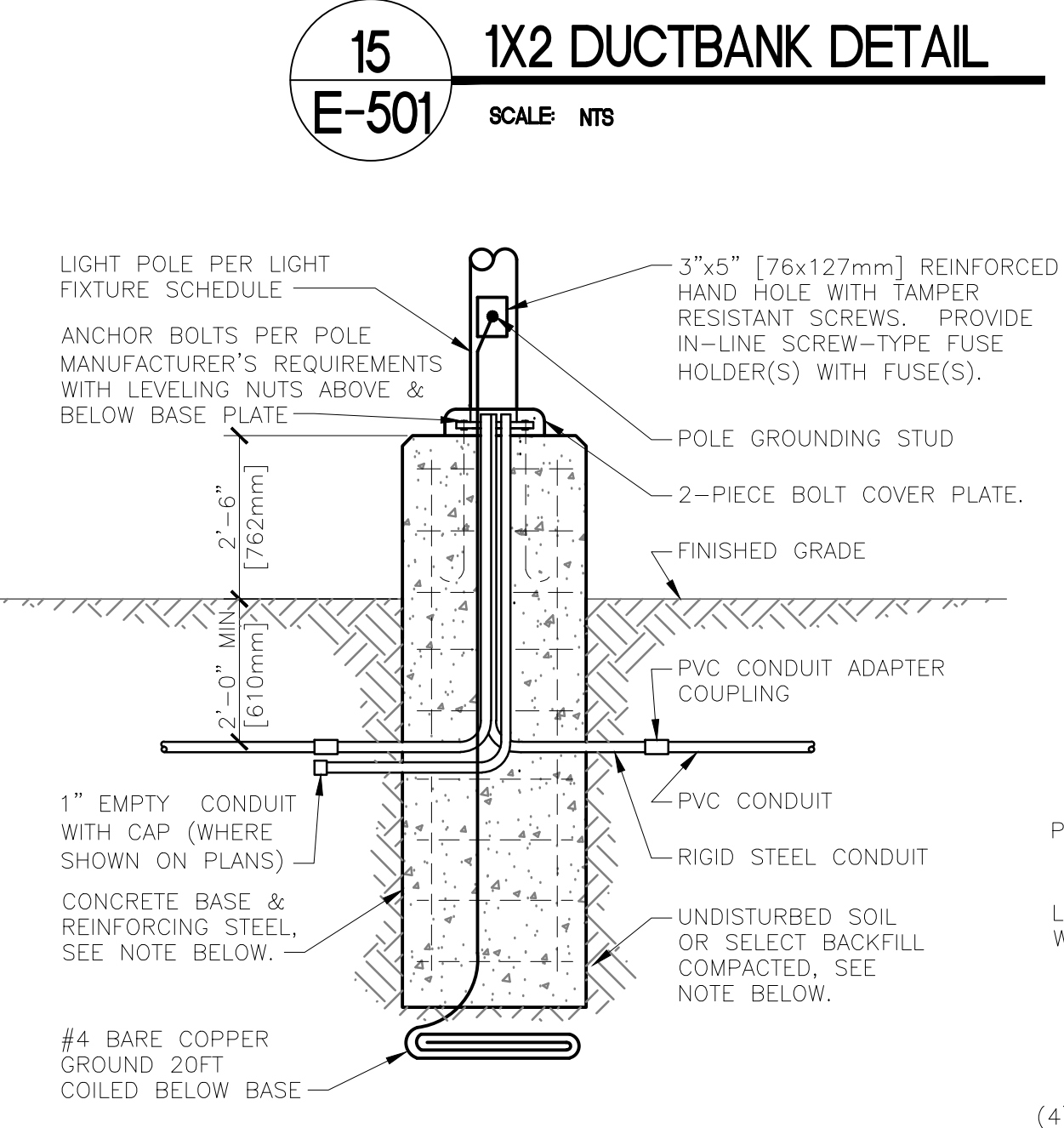
- NOTES FOR DETAIL 1/E-501:
1. ALL TRENCHES SHALL BE COVERED AFTER WORKING HOURS.
  2. ON TRENCHES ACROSS ROADS, MAINTAIN STEEL PLATES ACROSS HALF THE ROAD DURING CONSTRUCTION TO MINIMIZE IMPACT ON TRAFFIC.
  3. PROVIDE FLAGMEN TO DIRECT TRAFFIC DURING TIMES WHEN TRAFFIC FLOW IS IMPAIRED.



10 TO REPLACE REMOVED CURB AND GUTTER  
E-501 SCALE: NTS



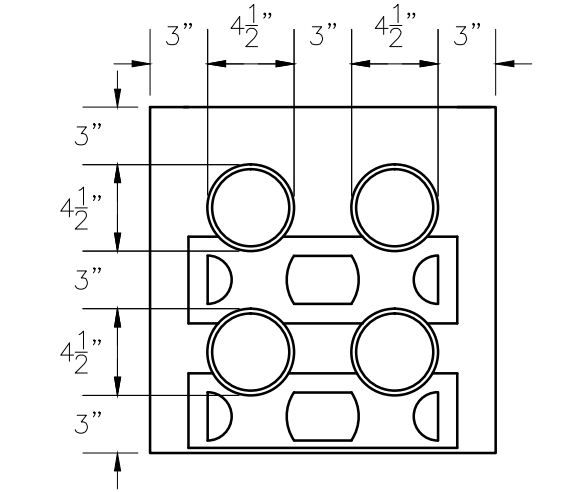
9 DUCT LINE ENTRANCE  
E-501 SCALE: NTS



15 1X2 DUCTBANK DETAIL  
E-501 SCALE: NTS

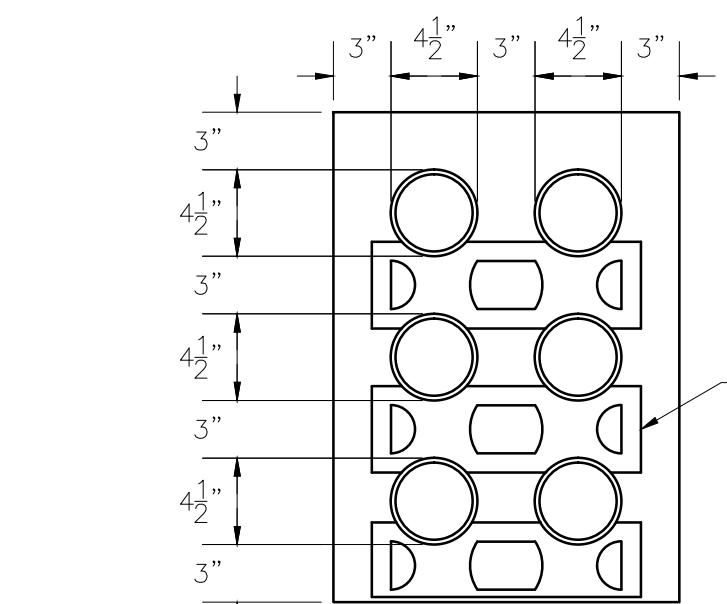
NOTE:  
BACKFILL, CONCRETE, REINFORCING STEEL, AND ANCHOR BOLTS ARE SHOWN FOR REFERENCE ONLY. STRUCTURAL DESIGN IS SHOWN ON STRUCTURAL DRAWINGS.

12 POLE BASE DETAIL  
E-501 SCALE: NTS

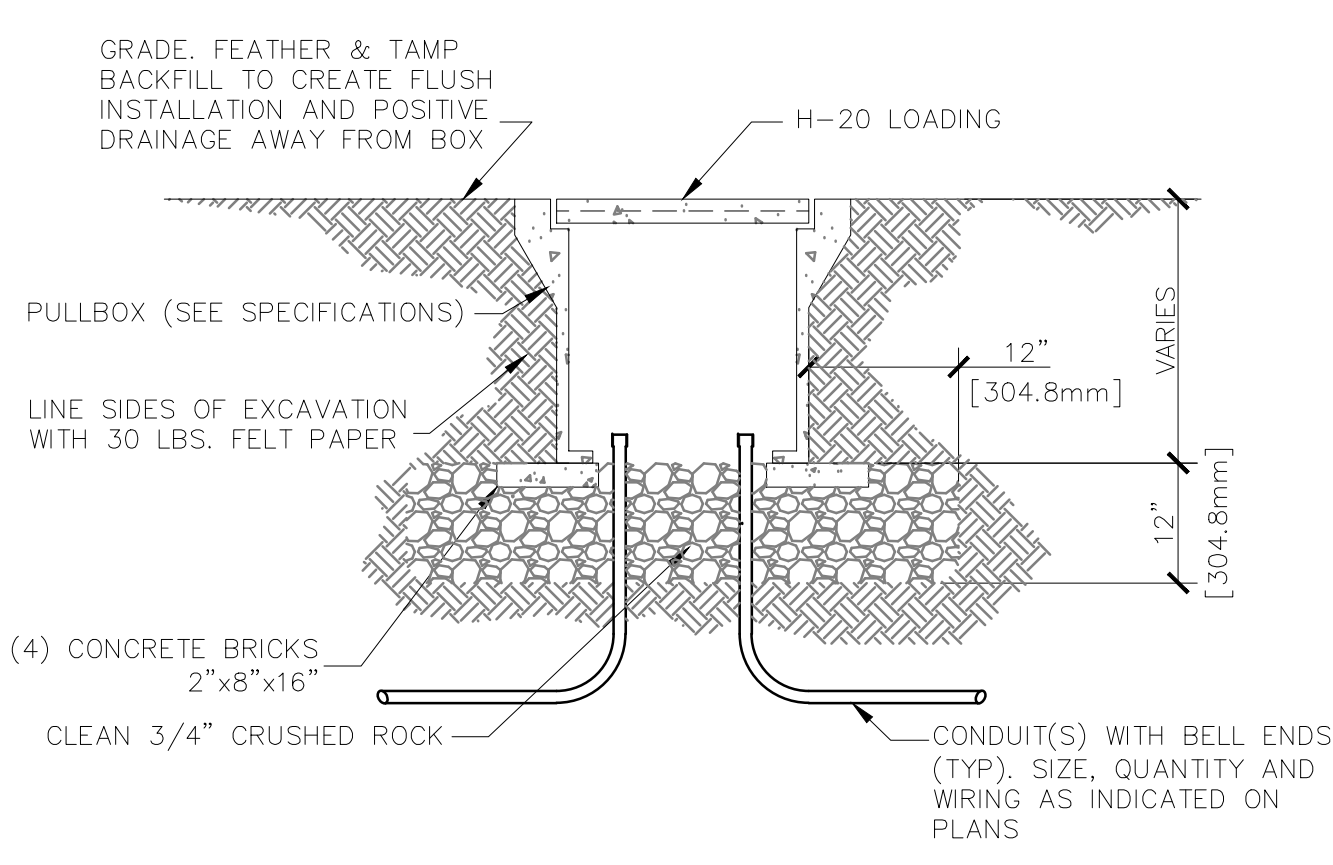


2 2X2 DUCTBANK DETAIL  
E-501 SCALE: NTS

- NOTES FOR DETAIL 2/E-501 & 3/E-501:
1. ELECTRICAL DUCT BANK SHALL BE CONSTRUCTED OF RED-DYE CONCRETE.
  2. CONCRETE SHALL HAVE A MINIMUM 30-DAY STRENGTH OF 3,000 PSI.
  3. PROVIDE REINFORCING RODS ON TOP OF DUCTS WHEN CROSSING OR PLACED IN ROADWAYS OR WHEN ENTERING BUILDINGS OR MANHOLES.
  4. RESTORE FINISHED GRADE TO MATCH EXISTING.
  5. ASPHALT & CONCRETE SHALL BE SAW-CUT PRIOR TO REMOVAL.
  6. NOMINAL COVER TO TOP OF ENVELOPE SHALL BE 30". PROVIDE CONDUIT SPACERS.

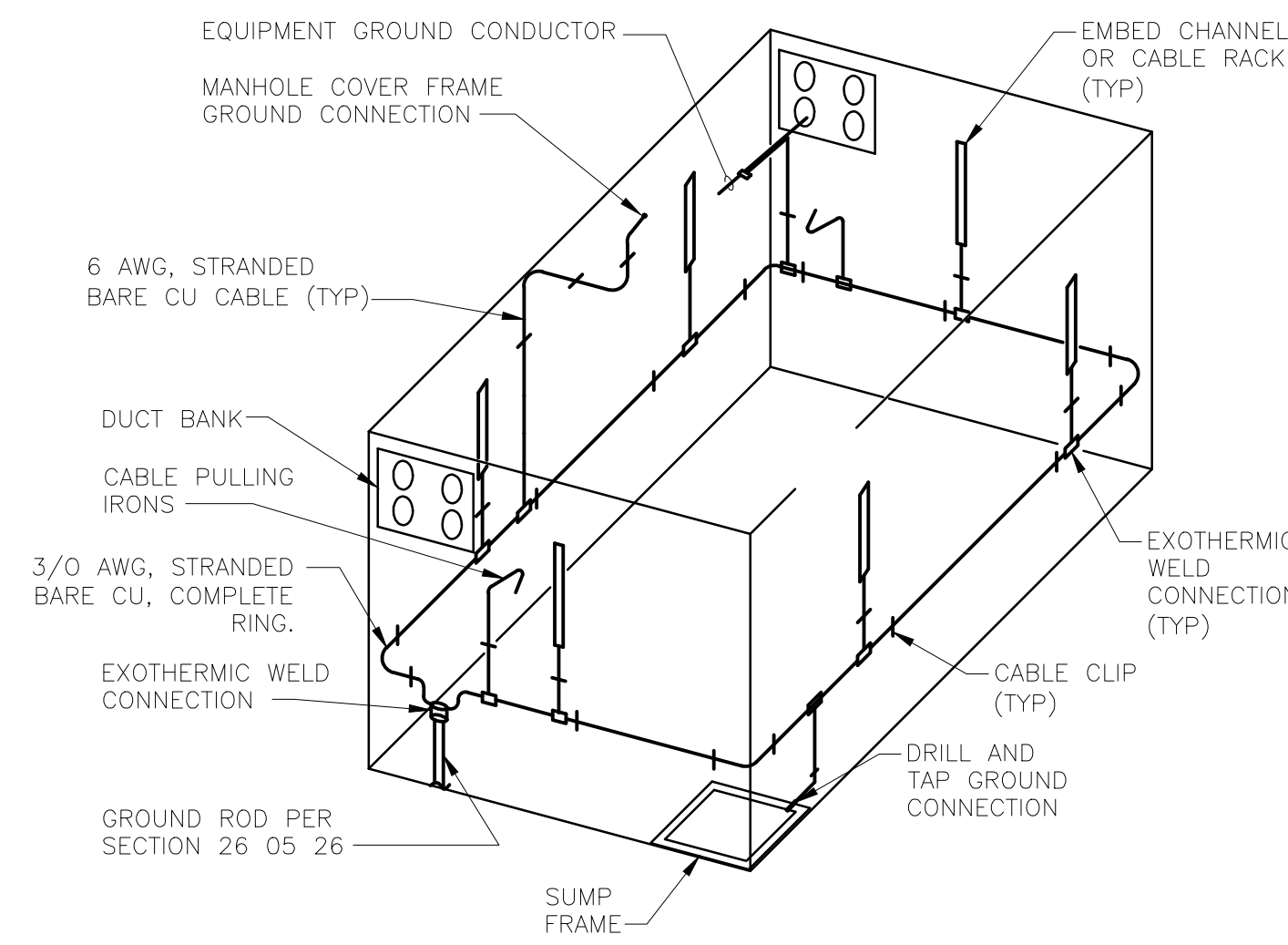


3 2X3 DUCTBANK DETAIL  
E-501 SCALE: NTS

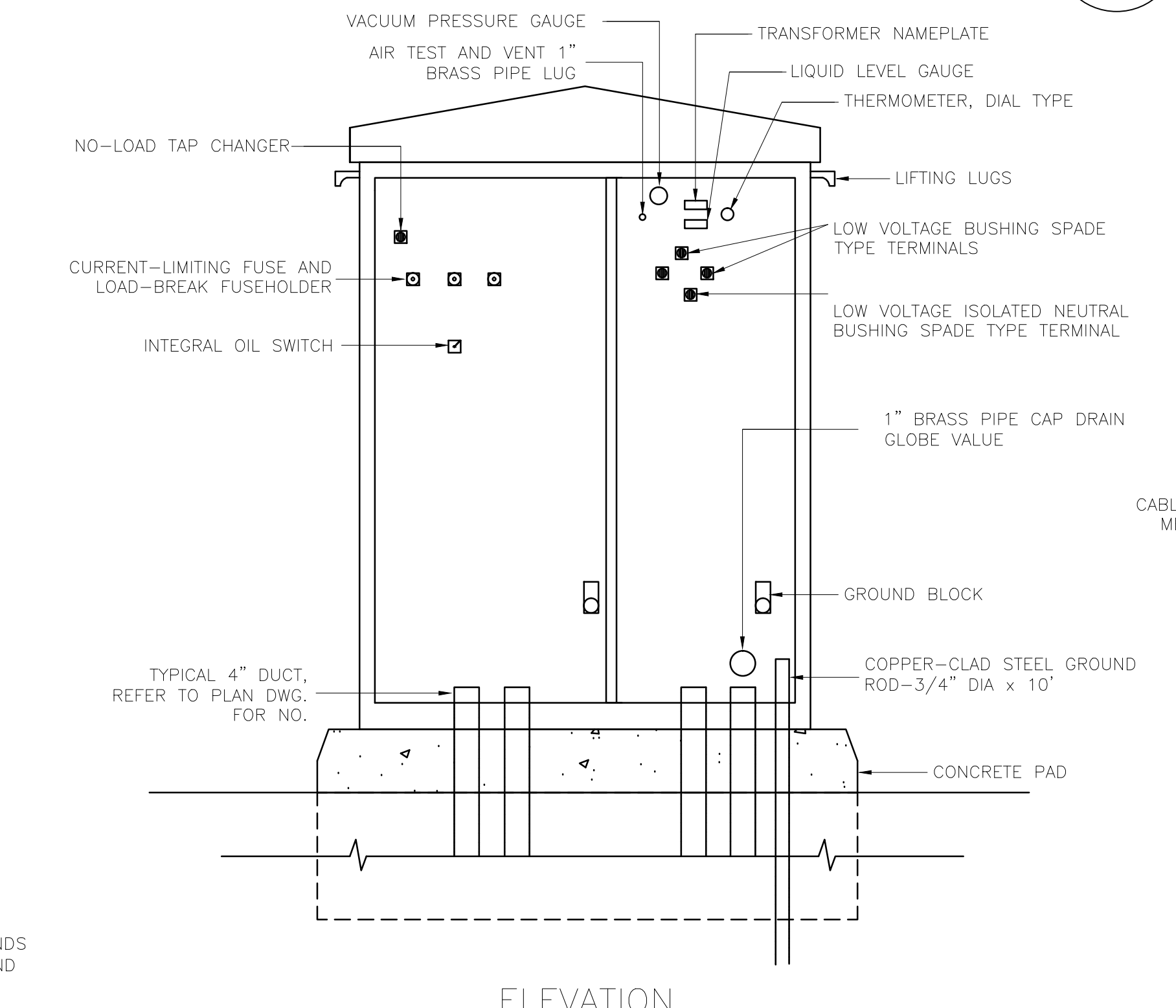


13 UNDERGROUND CONCRETE PULLBOX  
E-501 SCALE: NTS

- NOTES FOR DETAIL 7/E-501:
1. INSTALL A 3/0 AWG BARE STRANDED COPPER GROUNDING CONDUCTOR AROUND THE INSIDE PERIMETER OF THE VAULT AND ANCHOR TO THE WALLS WITH METALLIC CABLE CLIPS.
  2. BOND THE GROUNDING CONDUCTOR TO THE DUCT BANK EQUIPMENT GROUNDING CONDUCTORS, THE EXPOSED NON CURRENT CARRYING METAL PARTS OF RACKS, SUMP COVERS, AND LIKE ITEMS IN THE VAULTS WITH A MINIMUM 6 AWG BARE COPPER JUMPER.
  3. CONNECT THE GROUNDING CONDUCTOR TO THE GROUND ROD BY AN EXOTHERMIC WELDING PROCESS.
  4. BOND THE GROUNDING CONDUCTOR TO THE DUCT BANK EQUIPMENT GROUNDING CONDUCTORS, THE EXPOSED NON CURRENT CARRYING METAL PARTS OF RACKS, SUMP COVERS, AND LIKE ITEMS IN THE VAULTS WITH A MINIMUM 6 AWG BARE COPPER JUMPER.

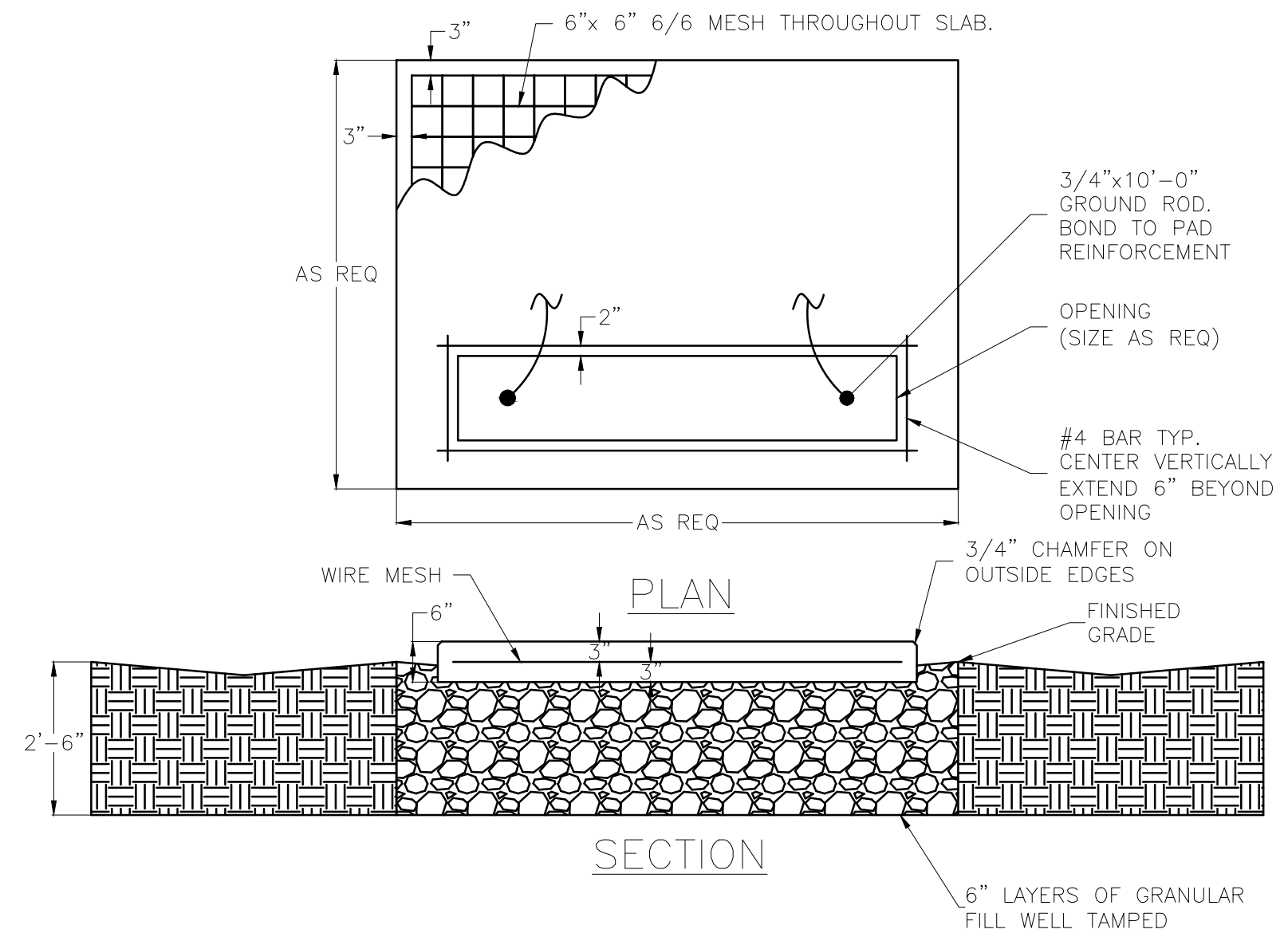


7 TYPICAL VAULT GROUNDING DETAIL  
E-501 SCALE: NTS

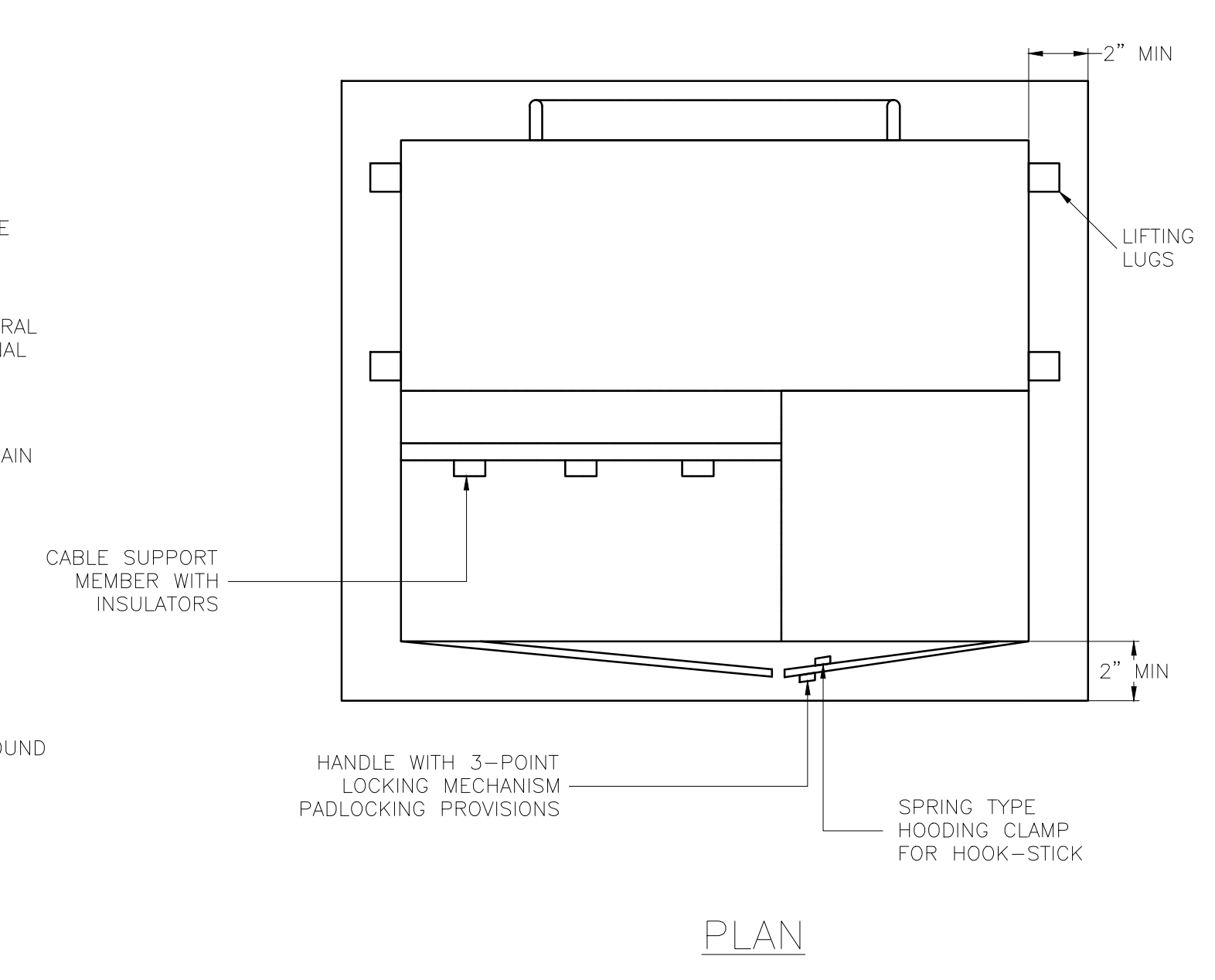


4 PADMOUNTED TRANSFORMER DETAIL  
E-501 SCALE: NTS

- NOTES FOR DETAIL 6/E-501:
1. CONCRETE SHALL BE 3000PSI AND BE TESTED IN ACCORDANCE WITH PROJECT SPECIFICATIONS.
  2. EXTEND GROUND ROD 2" ABOVE SLAB TO ACCOMMODATE GROUND JUMPER.
  3. PROVIDE TRANSFORMER FASTENING POINTS ACCORDING TO EQUIP. MANUFACTURER'S REQUIREMENTS.
  4. PROVIDE GROUND RODS IN BOTH PRIMARY & SECONDARY VAULTS.



6 TYPICAL TRANSFORMER AND SWITCH PAD DETAIL  
E-501 SCALE: NTS



- NOTES FOR DETAIL 11/E-501:
1. HIGH VOLTAGE COMPARTMENT SHALL BE INACCESSIBLE UNLESS LOW VOLTAGE COMPARTMENT DOOR IS OPEN.
  2. HIGH & LOW VOLTAGE DOORS SHALL BE EQUIPPED WITH DOOR GUIDES AND STOPS.
  3. TRANSFORMER SHALL BE SECURELY FASTENED TO PAD.
  4. ALL EXPOSED HARDWARE SHALL BE TAMPERPROOF.

100% CONSTRUCTION DOCUMENTS

PATIENT SAFETY MANAGER		INFECTION PREVENTIONIST		SUPERVISOR, PROJECT SECTION		PROJECT MANAGER (COTR)		Professional Stamp/Seal		Drawing Title ELECTRICAL DETAILS		Project Title COATESVILLE - VA MEDICAL CENTER A/E INSTALL EMERGENCY GENERATOR		Date 9/23/11	
SUPERVISION, BIOMED/ M&O		ENVIRON HEALTH FIRE/SAFETY SECTION		SAFETY/OCCUPATIONAL HEALTH MANAGER		CHIEF, ACQUISITION MGT SECT, CONTRACTING OFFICER		Approved: Chief Engineering Service		Drawn DJR/NAC		Building Number ---		Project No. 542-11-104	
VA POLICE CHIEF		PATIENT CARE SECTION		GENERAL PROPERTIES SECTION		GENERAL UTILITIES SECTION		Approved: Medical Center Director		Checked JMB/JDC		Location COATESVILLE, PENNSYLVANIA		DRAWING No. E-501	
Revisions		Date												Dwg. 11 of 16	

**ENGINEERS/ARCHITECT:**

**APOGEE**  
Consulting Group, PA  
Raleigh, NC  
Indianapolis, IN  
Atlanta, GA  
Columbia, MD  
www.apogee-pa.com  
(919) 858-7420  
Apogee Project # 2010 228

**WALDON STUDIO**  
ARCHITECTS & PLANNERS, PC  
6325 Woodside Court, Suite 310  
Columbia, Maryland 21046  
Tel: 410.290.9580 Fax: 410.290.5777  
www.waldonstudio.com

**WSP • SELLS**  
Transportation & Infrastructure

**LandDesign**

VA