

LOUVER SCHEDULE												
MARK	LOCATION	SYSTEM AND/OR SERVICE	TYPE	APPLICATION	SIZE		AIR FLOW		APD		DAMPER TYPE	REMARKS
					IN	[mm]	CFM	[L/s]	IN	[Pa]		
1-L1	SIDEWALL	GENERATOR RADIATOR	EXHAUST	DUCTED	120"x96"		67870	[32000]	0.15	[38]	GRAVITY	QTY 2
1-L2	SIDEWALL	GENERATOR INTAKES	INTAKE	GRAVITY	120"x102"		73485	[35000]	0.15	[38]	MOTORIZED	QTY 2
1-L3	SIDEWALL	NOMINAL VENTILATION	INTAKE	GRAVITY	18"x24"		1448	[680]	0.15	[38]	MOTORIZED

NOTES:
1. COORDINATE FINAL GENERATOR INTAKE AND EXHAUST DISCHARGE LOUVER SIZES WITH SELECTED GENERATOR MANUFACTURER'S RECOMMENDATION.
2. PROVIDE WITH BIRD/INSECT SCREENING.

FAN SCHEDULE																								
MARK	LOCATION	AREA AND/OR BLDG SERVED	SYSTEM AND/OR SERVICE	AIR FLOW		TSP		FAN								MOTOR ELECTRICAL							CONTROL SEQUENCE	REMARKS
								TYPE	WHEEL	CLASS	ARRANGEMENT, ROTATION, AND DISCHARGE	DIAMETER		MIN % EFF	DRIVE	FAN MAX RPM	NOMINAL POWER			PHASE	VOLT	RPM		
				CFM	[L/s]	IN	[Pa]					IN	[mm]				BHP	HP	[kW]					
EF-1	GEN ENC	GEN ENC	EXHAUST	750	[350]	0.125	[31]	ROOFTOP	AXIAL	---	UPBLAST	11	[280]		DIRECT	2895	0.1	0.125	[10]	1	230	1550	CONSTANT	SEE CONTROL NOTES

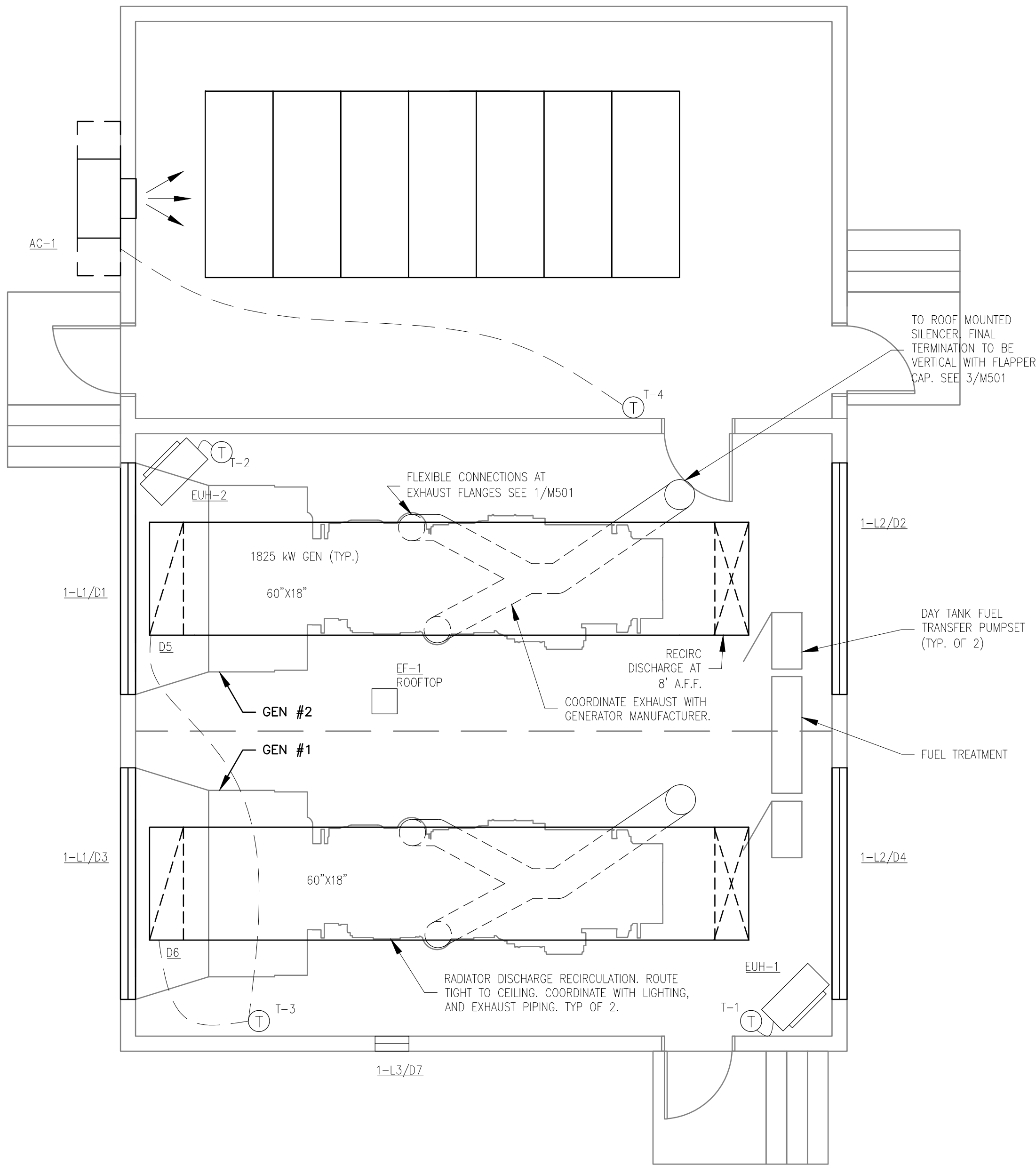
NOTES:
1. PROVIDE WITH ROOF CURB.
2. PROVIDE DISCONNECT SWITCH.

ELECTRIC UNIT HEATER SCHEDULE																	
MARK	LOCATION	AREA AND/OR BLDG SERVED	TYPE	AIR FLOW		EAT		MIN CAPACITY		POWER			FAN MOTOR				REMARKS
				CFM	L/S	*F	[*C]	BTUH	[W]	AMP	PHASE	VOLT	HP	[W]	PHASE	VOLT	
EUH-1	GENERATOR ENCLOSURE	GENERATOR ENCLOSURE	HORIZONTAL	580	[270]	41.4	[23]	17065	[5000]	20.8	1	240	25	[199]	1	240	
EUH-2	GENERATOR ENCLOSURE	GENERATOR ENCLOSURE	HORIZONTAL	580	[270]	41.4	[23]	17065	[5000]	20.8	1	240	25	[199]	1	240	

NOTES:
1. PROVIDE UNIT MOUNTED THERMOSTAT, SET THERMOSTAT TO 50°F.
2. PROVIDE UNIVERSAL CEILING BRACKET.
3. PROVIDE DISCONNECT SWITCH.
4. HEATERS SHALL BE MOUNTED 8" ABOVE FINISHED FLOOR.

ROOM HEATING AND COOLING UNIT SCHEDULE (THRU-WALL ELECTRIC HEATING COIL, SELF-CONTAINED REFRIGERATION)																	
MARK	LOCATION	NOMINAL HIGH SPEED AIR FLOW	COOLING CAPACITY								COOLING ELECTRICAL POWER			MIN HEATING CAPACITY		REMARKS	
			MIN TOTAL CAPACITY		MIN SENS CAPACITY		EAT				AMPS	PHASE	VOLT				
							Db		Wb								
			CFM	[L/s]	BTUH	[W]	BTUH	[W]	°F	[°C]	°F	[°C]					BTUH
AC-1	SWITCHGEAR RM	1100	[520]	38800	[11000]	26300	[7700]	90	[32]	67	[19]	35	1	230	17080	[5000]	BASIS OF DESIGN BARD MODEL V08A1-A05

NOTES:
1. PROVIDE UNIT WITH VENTILATION AIR BLANK OFF PLATE, LOW AMBIENT CONTROL KIT FOR OPERATION TO 0° F, TIME GUARD CONTROL, UNIT INSTALLED FILTER, DIRECTIONAL SUPPLY GRILLE, AND 7 DAY PROGRAMMABLE THERMOSTAT. PROVIDE DISCONNECT SWITCH.
2. MOUNT UNIT WITH BOTTOM OF SUPPLY GRILLE 8"-0" ABOVE FINISHED FLOOR.
3. MOUNT UNIT THERMOSTAT ON INSULATED BACK PLATE TO INSURE THERMOSTAT IS REPORTING ROOM TEMPERATURE AND NOT WALL TEMPERATURE.
4. SET AC-1'S THERMOSTAT TO 77° IN COOLING MODE, 50° IN HEATING.
5. OR EQUAL BY MARVAIR.



1
M-103
GENERATOR ENCLOSURE MECHANICAL PLAN
SCALE: 1/4" = 1'

CONTROL NOTES
1. EMERGENCY GENERATOR 1 AND 2 SHALL BE INTERLOCKED WITH CORRESPONDING D2 AND D4 DAMPERS. ON LOSS OF POWER OR GENERATOR 1 START COMMAND, D4 SHALL OPEN. WHEN EMERGENCY GENERATOR 1 IS STOPPED D4 SHALL CLOSE. ON LOSS OF POWER OR GENERATOR 2 START COMMAND, D2 SHALL OPEN. WHEN EMERGENCY GENERATOR 2 IS STOPPED D2 SHALL CLOSE.
2. NOMINAL EXHAUST FAN EF-1 SHALL BE INTERLOCKED WITH D7 AND EMERGENCY GENERATORS 1 AND 2. EF-1 SHALL RUN CONTINUOUSLY WHILE GENERATOR'S ARE DE-ENERGIZED AND SHALL TURN OFF UPON GENERATOR START UP AND D7 SHALL CLOSE.
3. POWER OPERATED, OPPOSED BLADE, DAMPERS D5 AND D6 SHALL BE INTERLOCKED WITH ROOM THERMOSTAT T-3 SET AT 60°F. ON A DROP IN ROOM TEMPERATURE BELOW 60°F D5 AND D6 SHALL MODULATE OPEN. ON A RISE IN ROOM TEMPERATURE ABOVE 60°F D5 AND D6 SHALL MODULATE CLOSED.
4. ELECTRIC UNIT HEATERS EUH-1 AND EUH-2 SHALL BE INTERLOCKED WITH ROOM THERMOSTATS T1 AND T2 SET AT 50°F. ON A DROP IN ROOM TEMPERATURE BELOW 48°F ELECTRIC UNIT HEATERS SHALL BE ENERGIZED.

100% CONSTRUCTION DOCUMENTS

Revisions

Date

ENGINEERS/ARCHITECT:

APOGEE

Consulting Group, PA

Raleigh, NC
Indianapolis, IN
Atlanta, GA
Columbia, MD
www.apogee-pa.com
Apogee Project # 2010 228

WALDON STUDIO

ARCHITECTS & PLANNERS, PC

6325 Woodside Court, Suite 310
Columbia, Maryland 21046
Tel: 410.290.9580 Fax: 410.290.5777
www.waldonstudio.com

WSP

SELLS

LandDesign

Transportation & Infrastructure

Professional Stamp/Seal

Drawing Title
GENERATOR ENCLOSURE
MECHANICAL PLAN

Project Title
COATESVILLE - VA MEDICAL
CENTER AVE INSTALL
EMERGENCY GENERATOR

Date
9/23/11

Project No.
542-11-104

Building Number

Location
COATESVILLE, PENNSYLVANIA

Drawn
DJR/NAC

Checked
JMB/JDC

DRAWING No.
M-103

Dwg. 4 Of 5

VA