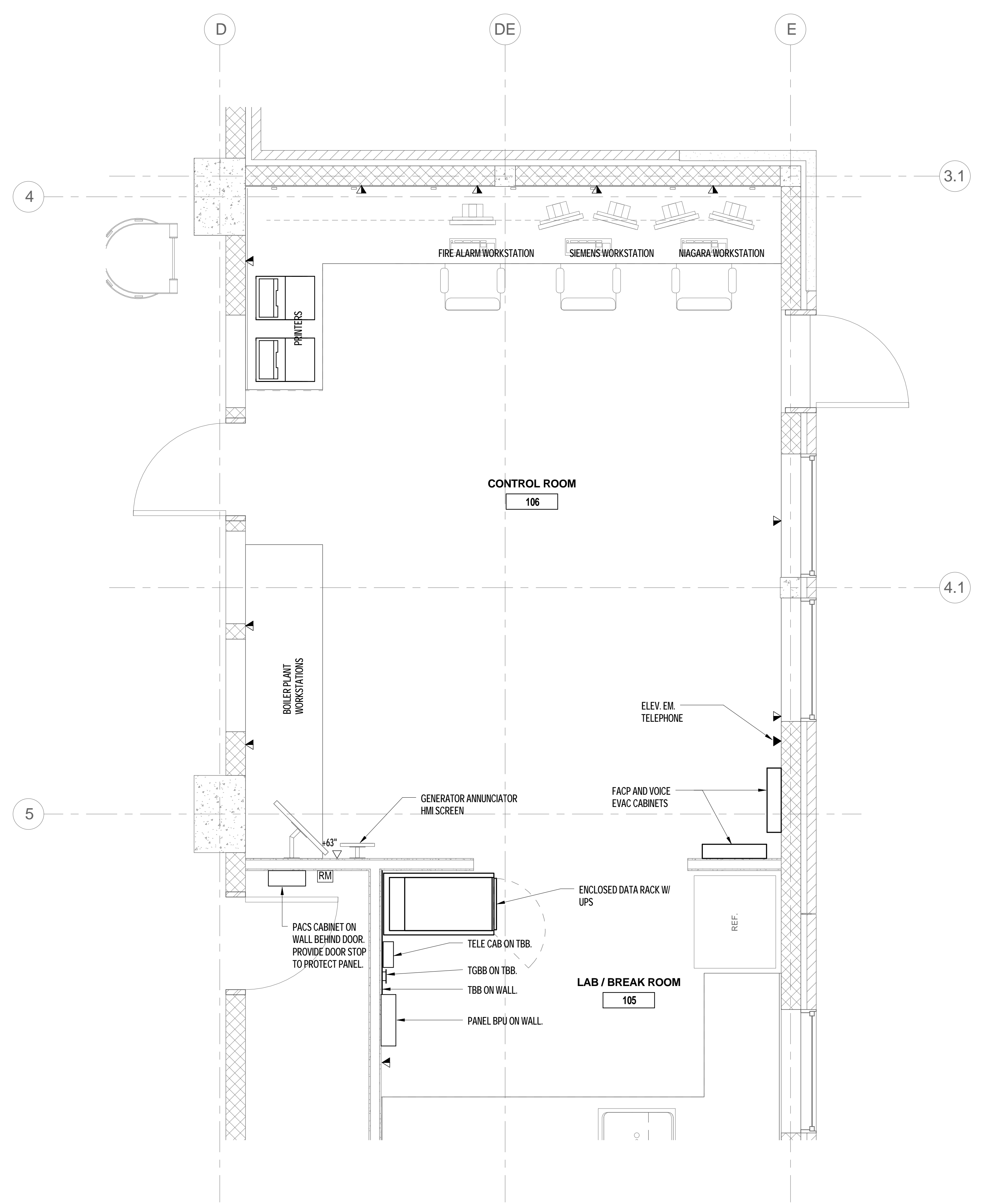
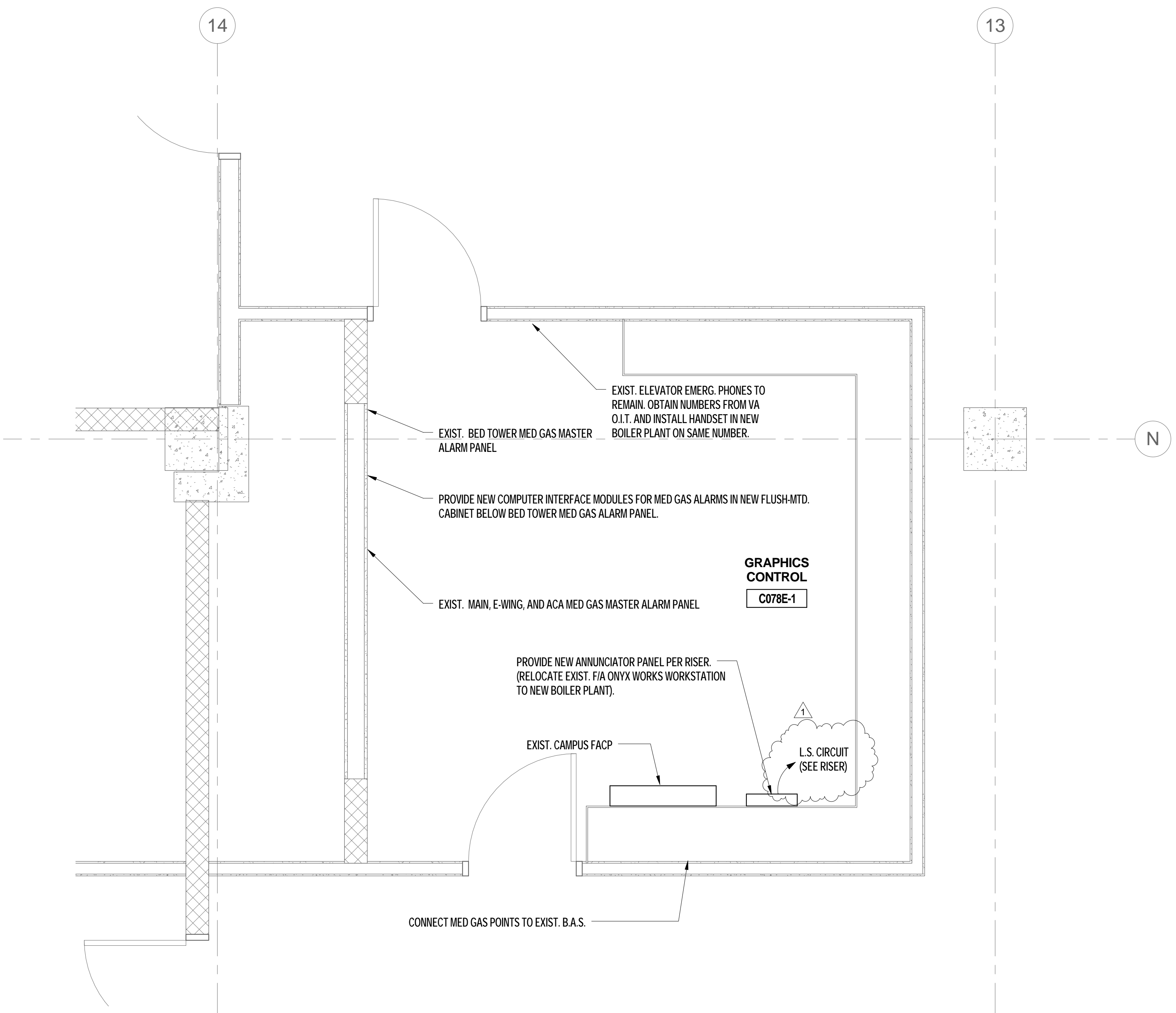


three inches = one foot
one and one half inches = one foot
one inch = one foot
three quarters inch = one foot
one half inch = one foot
three eighths inch = one foot
one eighth inch = one foot
one quarter inch = one foot



1 ENLARGED CONTROL ROOM - SYSTEMS
1/2" = 1'-0"



2 ENLARGED GRAPHIC CONTROL C078-1 - SYSTEMS
1/2" = 1'-0"

REV 1 - L.S. CIRCUIT	5/31/2018	CONSULTANTS:	ENGINEER-OF-RECORD CHAD J. FRALICK	FL P.E. NO. 73811	ARCHITECT/ENGINEERS: AKEA INC. 3603 NW 98th Street, Suite B Gainesville, FL 32606 Phone: (352) 474-6124 Fax: (352) 553-4437 COA: FL #26693 AKEA Project No. 083-14	Drawing Title ENLARGED CONTROL ROOM PLANS	Project Title REPLACE BOILERS - FCA D, ENERGY AT THE MALCOM RANDALL VAMC	Project Number 573-14-600	Office of Construction and Facilities Management 	
						Approved: Project Director	Location GAINESVILLE, FLORIDA	Building Number		Drawing Number ET102
Revisions:	Date						Date FEBRUARY 28, 2018	Checked CJF		Drawn CJF

FINAL DESIGN
APPROVED FOR CONSTRUCTION