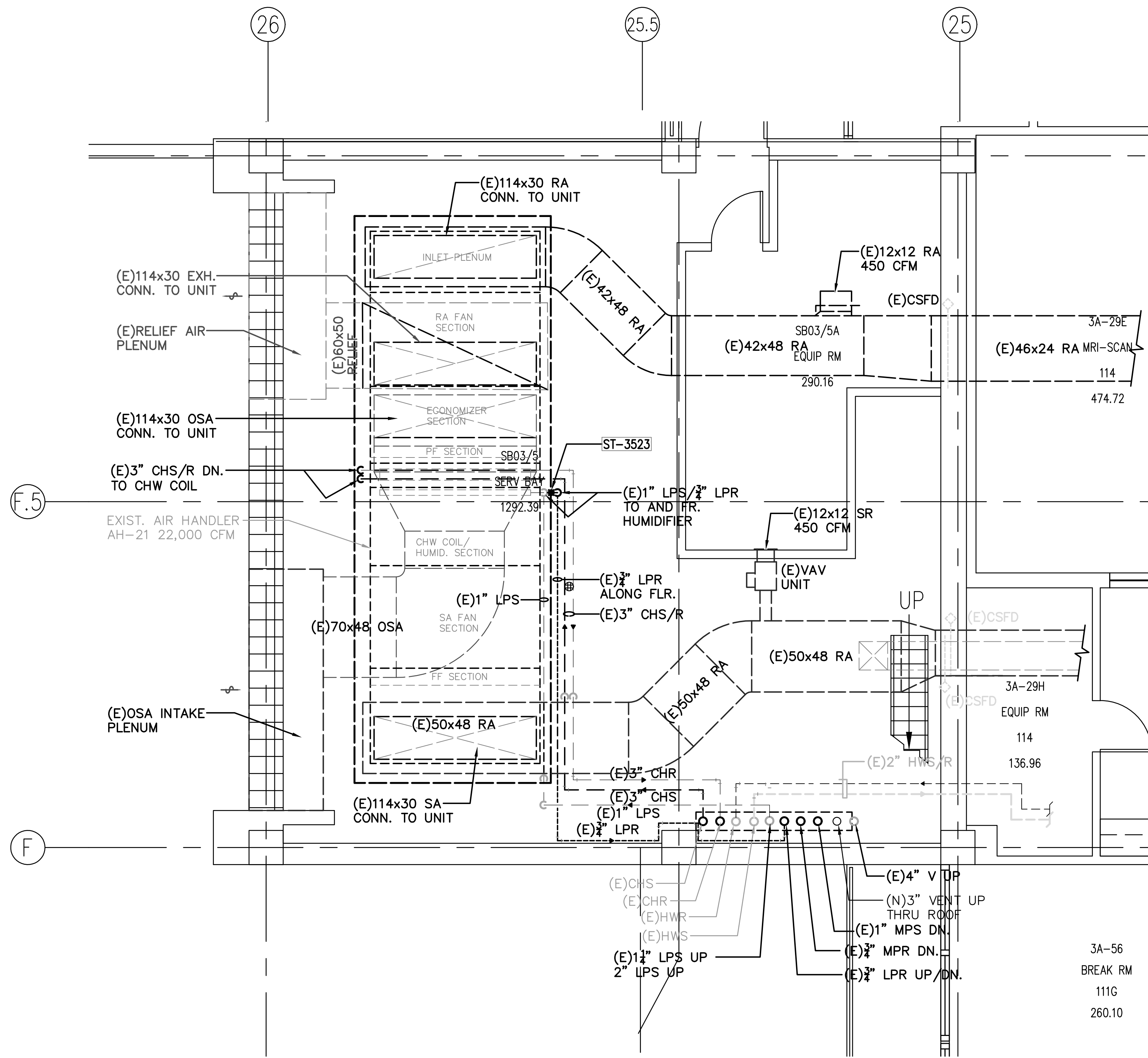
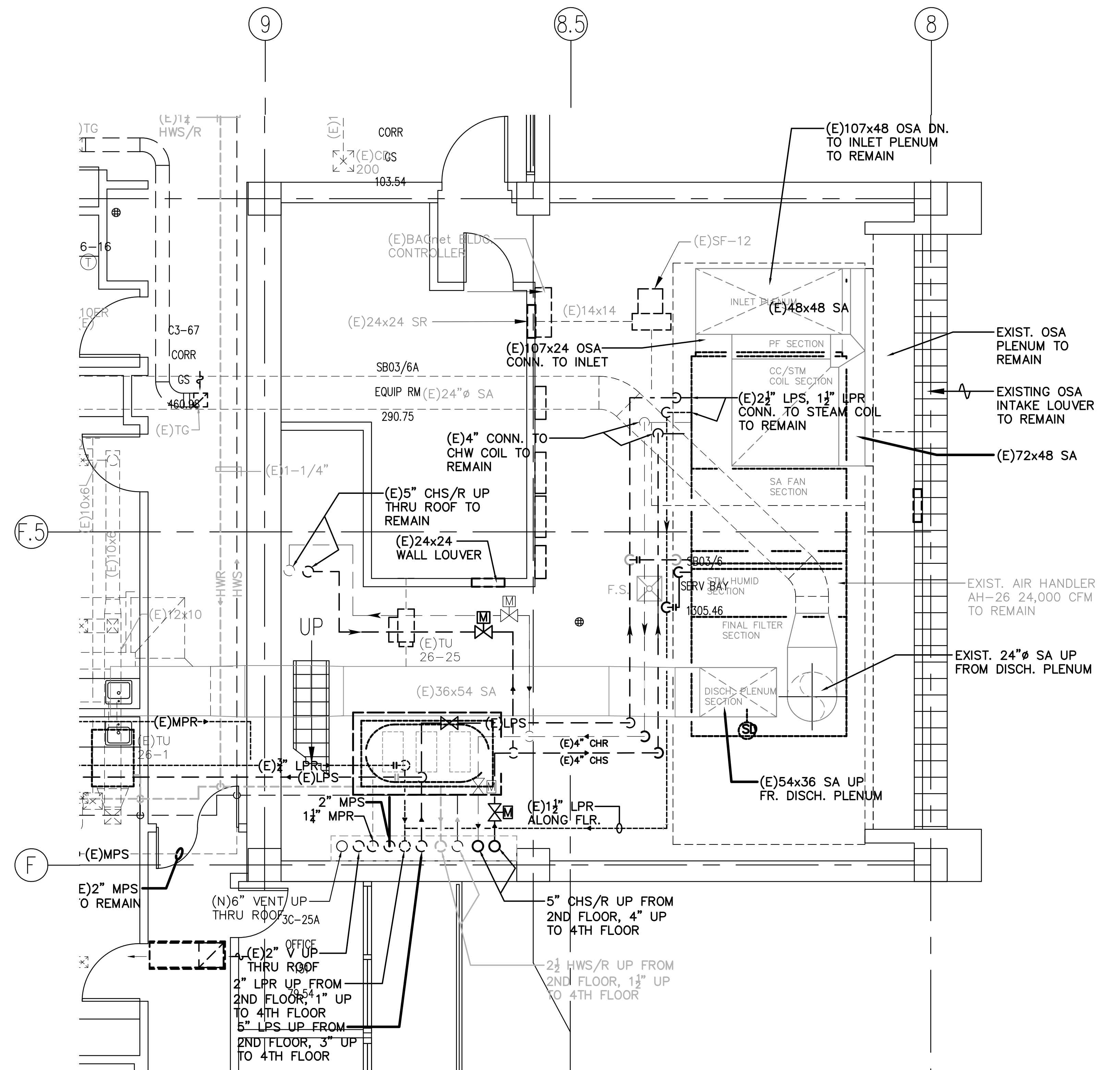


1  
2  
3  
4  
5  
6  
7  
8  
9



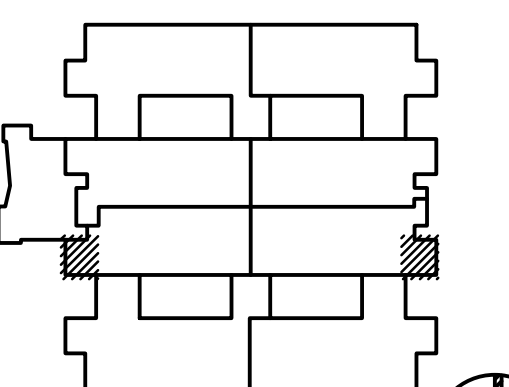
PARTIAL THIRD FLOOR SERVICE BAY #5  
1/4"=1'-0"



PARTIAL THIRD FLOOR SERVICE BAY #6  
1/4"=1'-0"

### STEAM TRAP GENERAL NOTES

1. REFER TO THE STEAM TRAP SURVEY REPORT ON SHEETS M-003, M004, AND M005. ALL STEAM TRAPS THAT ARE REPORTED AS LEAKING (LK), PLUGGED (PL), AND BLOWING THRU (BT) SHALL BE REPLACED WITH STEAM TRAPS OF SIMILAR TYPE AND CONNECTION SIZE.
2. ALL END OF MAIN STEAM TRAPS (DRIP TRAPS ONLY) THAT ARE TO BE REPLACED SHALL BE COMPLETE WITH UNIVERSAL STEAM TRAP STATION SIMILAR TO SPIRAX SARCO MODEL USTS-II OR APPROVED EQUAL IN ARMSTRONG AND WATSON McDaniel. THE UNIVERSAL STEAM TRAP STATION SHALL BE MANUFACTURED OF ALL STAINLESS STEEL CONSTRUCTION, COMPLETE WITH (2) ISOLATION VALVES, (1) INTEGRAL INLET STARINER, (1) TRAP TEST VALVES, AND (1) STRAINER BLOWDOWN VALVE. THE EXISTING STEAM TRAP ASSEMBLY SHALL BE REMOVED BETWEEN THE INLET AND OUTLET ISOLATION VALVES.
3. DEFECTIVE PROCESS AND HEATING COIL STEAM TRAPS SHALL BE REPLACED WITH CONVENTIONAL MECHANICAL TRAPS (INVERTED BUCKET OR FLOAT AND THERMOSTATIC) OF SIMILAR TYPE AND CONNECTION SIZE, DUE TO THE RELATIVELY HIGH CONDENSATE CAPACITIES.
4. DRAWINGS ARE ESSENTIALLY DIAGRAMMATIC. CONTRACTOR SHALL FIELD-SURVEY TO VERIFY THE ACTUAL TRAP LOCATIONS AND INSTALL ALL TRAPS WITH THE REQUIRED SERVICE CLEARANCES.
5. ALL STEAM TRAP BYPASS VALVES SHALL BE REMOVED, AND PIPE CONNECTIONS TO THE MAINS SHALL BE CAPPED-OFF.
6. STEAM AND CONDENSATE RETURN PIPE INSULATION SHALL BE INSPECTED, DAMAGED AND MISSING PIPE INSULATION AND JACKETING SHALL BE REPLACED WITH NEW. PROVIDE AN ALLOWANCE OF 50 LIN. FT. OF PIPE INSULATION PER AIR HANDLER.



Key Plan

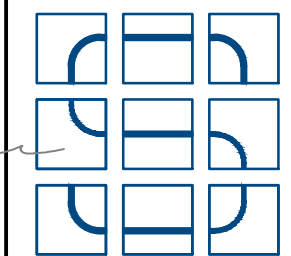
OWNER:



DEPARTMENT OF VETERANS AFFAIRS  
NETWORK CONTRACTING OFFICE 22  
4811 AIRPORT PLAZA DRIVE, SUITE 600  
LONG BEACH, CA 90815



ENGINEERS/CONSULTANTS:



**Schwab**  
Engineering & Management  
A Certified SB/DVBE Firm  
1000 E. Walnut Street, Suite 227, Pasadena, CA 91106  
t: 888.900.3823 f: 626.463.2739 www.schwabeng.com  
Project No.: 0215.747.00

Drawing Title

PARTIAL THIRD FLOOR  
STEAM TRAP LOCATION PLAN (SB #5 AND #6)

Approved Project Director

Project Title

JERRY L. PETTIS MEMORIAL  
VA LOMA LINDA HEALTHCARE SYSTEM  
CORRECT STEAM DEFICIENCIES

Location

1201 BENTON STREET, LOMA LINDA, CALIFORNIA 92357

Date

JUNE 18, 2017

Checked

ACV/JDC

Drawn

JDC/JC

Project Number

605-15-351

Building Number

Building 1

Drawing Number

M-403.3

Drawn by

of

Office of  
Construction  
and Facilities  
Management



Department of  
Veterans Affairs