

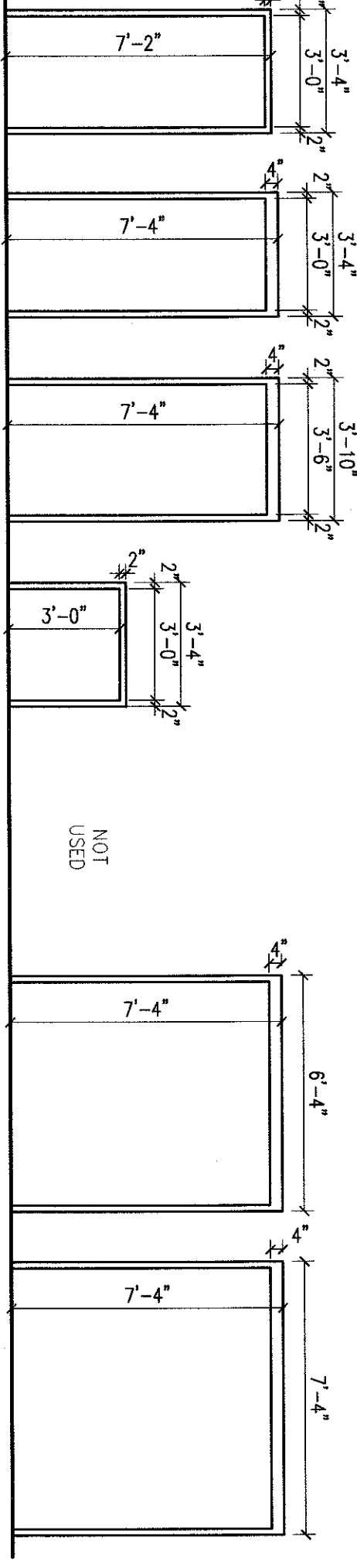
DOOR AND FRAME SCHEDULE:

DR. NO.	DOOR				FRAME			FIRE R.T.G.	H.M.R. SET	REMARKS
	SIZE	MATERIAL	GLAZING	TYPE	MATERIAL	TYPE	JAMB			
01	PAN 3'-0" x 7'-0"	H.M.	1/4" TEMP.	A	H.M.	6	-	-	8	⑤
02	PAN 3'-0" x 7'-0"	H.M.		B	H.M.	6	3/2" x 7'-0"	4/4" x 7'-0"	11	②
03	3'-0" x 7'-0"	SCMD		A	H.M.	1	3/2" x 7'-0"	4/4" x 7'-0"	-	2
04	3'-0" x 7'-0"	SCMD		A	H.M.	1	3/2" x 7'-0"	4/4" x 7'-0"	-	1A
05	PAN 3'-0" x 7'-0"	H.M.		A	H.M.	6	3/2" x 7'-0"	4/4" x 7'-0"	9	② ③
06	PAN 3'-0" x 7'-0"	H.M.		A	H.M.	6	3/2" x 7'-0"	4/4" x 7'-0"	11	③
07	3'-0" x 7'-0"	SCMD		A	H.M.	1	3/2" x 7'-0"	4/4" x 7'-0"	-	6A
08	3'-0" x 7'-0"	SCMD		A	H.M.	1	3/2" x 7'-0"	4/4" x 7'-0"	-	1
09	3'-0" x 7'-0"	SCMD		A	H.M.	1	3/2" x 7'-0"	4/4" x 7'-0"	-	6A
10	3'-0" x 7'-0"	SCMD		A	H.M.	1	3/2" x 7'-0"	4/4" x 7'-0"	-	1
11	3'-0" x 7'-0"	SCMD		A	H.M.	1	3/2" x 7'-0"	4/4" x 7'-0"	-	2
12	3'-0" x 7'-0"	SCMD		A	H.M.	1	3/2" x 7'-0"	4/4" x 7'-0"	-	3A
13	2'-0" x 7'-0"	SCMD		A	H.M.	1	3/2" x 7'-0"	4/4" x 7'-0"	-	2
14	3'-0" x 7'-0"	SCMD		A	H.M.	1	3/2" x 7'-0"	4/4" x 7'-0"	-	3
15	3'-0" x 7'-0"	SCMD		A	H.M.	1	3/2" x 7'-0"	4/4" x 7'-0"	-	3
16	PAN 3'-0" x 7'-0"	H.M.		B	H.M.	6	3/2" x 7'-0"	4/4" x 7'-0"	7	⑤
17	PAN 3'-0" x 7'-0"	H.M.	WIRE GLASS	B	H.M.	7	3/2" x 7'-0"	4/4" x 7'-0"	7	⑤
18	PAN 3'-0" x 7'-0"	H.M.		A	H.M.	2	3/2" x 7'-0"	4/4" x 7'-0"	4	① ②
19	PAN 3'-0" x 7'-0"	H.M.		A	H.M.	6	3/2" x 7'-0"	4/4" x 7'-0"	12	① ②
20	PAN 3'-0" x 7'-0"	H.M.		A	H.M.	6	3/2" x 7'-0"	4/4" x 7'-0"	9	② ③
21	PAN 3'-0" x 7'-0"	SCMD		A	H.M.	6	3/2" x 7'-0"	4/4" x 7'-0"	9	② ③
22	PAN 3'-0" x 7'-0"	SCMD		A	H.M.	6	3/2" x 7'-0"	4/4" x 7'-0"	9	② ③
23	3'-0" x 7'-0"	H.M.		A	H.M.	2	3/2" x 7'-0"	4/4" x 7'-0"	6	① ②
24	PAN 3'-0" x 7'-0"	H.M.		A	H.M.	6	3/2" x 7'-0"	4/4" x 7'-0"	9	② ③
25	PAN 3'-0" x 7'-0"	H.M.		A	H.M.	6	3/2" x 7'-0"	4/4" x 7'-0"	9	② ③
26	NOT USED	-		-	-	-	-	-	-	-
27	3'-0" x 7'-0"	SCMD		A	H.M.	1	3/2" x 7'-0"	4/4" x 7'-0"	6A	②
28	3'-0" x 7'-0"	SCMD		A	H.M.	1	3/2" x 7'-0"	4/4" x 7'-0"	-	1
29	3'-0" x 7'-0"	SCMD		A	H.M.	1	3/2" x 7'-0"	4/4" x 7'-0"	-	1
30	3'-0" x 7'-0"	SCMD		A	H.M.	1	3/2" x 7'-0"	4/4" x 7'-0"	-	1
31	3'-0" x 7'-0"	SCMD		A	H.M.	1	3/2" x 7'-0"	4/4" x 7'-0"	-	1
32	3'-0" x 7'-0"	SCMD		A	H.M.	1	3/2" x 7'-0"	4/4" x 7'-0"	-	1
33	3'-0" x 7'-0"	SCMD		A	H.M.	1	3/2" x 7'-0"	4/4" x 7'-0"	-	6A
34	3'-0" x 7'-0"	H.M.		A	H.M.	1	3/2" x 7'-0"	4/4" x 7'-0"	6A	②
35	3'-0" x 7'-0"	H.M.		A	H.M.	3	3/2" x 7'-0"	4/4" x 7'-0"	5	① ②
36	3'-0" x 7'-0"	H.M.		A	H.M.	2	3/2" x 7'-0"	4/4" x 7'-0"	6	① ②
37	PAN 3'-0" x 7'-0"	H.M.		A	H.M.	6	3/2" x 7'-0"	4/4" x 7'-0"	11	②
38	3'-0" x 7'-0"	H.M.		A	H.M.	6	3/2" x 7'-0"	4/4" x 7'-0"	-	6
39	PAN 3'-0" x 7'-0"	H.M.		A	H.M.	6	3/2" x 7'-0"	4/4" x 7'-0"	12	① ②
40	3'-0" x 7'-0"	H.M.		A	H.M.	1	3/2" x 7'-0"	4/4" x 7'-0"	68	③
41	PAN 3'-0" x 7'-0"	H.M.	1/4" TEMP.	B	H.M.	6	3/2" x 7'-0"	4/4" x 7'-0"	10	③
42	PAN 3'-0" x 7'-0"	H.M.		A	H.M.	6	3/2" x 7'-0"	4/4" x 7'-0"	11	②
43	3'-0" x 7'-0"	H.M.		A	H.M.	6	3/2" x 7'-0"	4/4" x 7'-0"	13	③
44	3'-0" x 7'-0"	H.M.		A	H.M.	1	3/2" x 7'-0"	4/4" x 7'-0"	3	③
45	3'-0" x 7'-0"	H.M.		A	H.M.	1	3/2" x 7'-0"	4/4" x 7'-0"	4	③
46	PAN 3'-0" x 7'-0"	H.M.		A	H.M.	1	3/2" x 7'-0"	4/4" x 7'-0"	6	① ②
47	PAN 3'-0" x 7'-0"	H.M.		A	H.M.	1	-	3/2" x 7'-0"	14	③
48	3'-0" x 3'-0"	H.M.		A	H.M.	4	9/4" x 7'-0"	9/4" x 7'-0"	029	①
49	3'-0" x 3'-0"	H.M.		A	H.M.	4	9/4" x 7'-0"	9/4" x 7'-0"	029	①

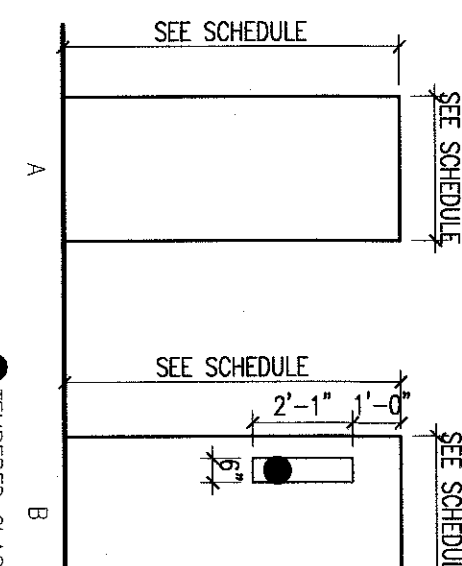
DOOR SCHEDULE REMARKS:
 ① BASE RESISTANT (BR) DOOR AND FRAME ② DOOR TO BE PROVIDED WITH LOW ENERGY OPERATORS ③ DOOR TO BE PROVIDED WITH AUTO DOOR OPENER
 ④ CARGO READER ⑤ MAGNETIC DOOR HOLDERS ⑥ EXT. DECKERS WITH ELECTRIC DOOSING

GENERAL NOTES:
 1. SHIP DECKS FOR DOORS, FRAMES, AND FINISH HARDWARE SHALL BE SUBMITTED TO THE CORP AND ARCHITECT FOR REVIEW PRIOR TO ORDER AND INSTALLATION.
 2. THE CONTRACTOR RESPONSIBLE FOR INSTALLING DOORS, FRAMES AND HARDWARE SHALL FIELD VERIFY ALL CONDITIONS AND REPORT ANY PROPOSED VARIATIONS TO CHANGES TO THE CORP.

DR. NO.	DOOR	MATERIAL	FINISH	FIRE Rtg.	REMARKS
010	12'-0" x 12'-0"	OVERHEAD COILING DOOR	STEEL	PAINT	ONE HOUR
011	7'-0" x 6'-0"	OVERHEAD COILING DOOR	STEEL	PAINT	ONE HOUR
012	7'-0" x 6'-0"	OVERHEAD COILING DOOR	STEEL	PAINT	ONE HOUR
013	7'-0" x 6'-0"	OVERHEAD COILING DOOR	STEEL	PAINT	ONE HOUR
014	7'-0" x 6'-0"	OVERHEAD COILING DOOR	STEEL	PAINT	ONE HOUR
015	7'-0" x 6'-0"	OVERHEAD COILING DOOR	STEEL	PAINT	ONE HOUR
016	7'-0" x 6'-0"	OVERHEAD COILING DOOR	STEEL	PAINT	ONE HOUR
017	4'-0" x 6'-0"	OVERHEAD COILING DOOR	STEEL	PAINT	ONE HOUR
018	4'-0" x 6'-0"	OVERHEAD COILING DOOR	STEEL	PAINT	ONE HOUR
019	4'-0" x 6'-0"	OVERHEAD COILING DOOR	STEEL	PAINT	ONE HOUR
020	4'-0" x 6'-0"	OVERHEAD COILING DOOR	STEEL	PAINT	ONE HOUR
021	4'-0" x 6'-0"	OVERHEAD COILING DOOR	STEEL	PAINT	ONE HOUR
022	4'-0" x 6'-0"	OVERHEAD COILING DOOR	STEEL	PAINT	ONE HOUR

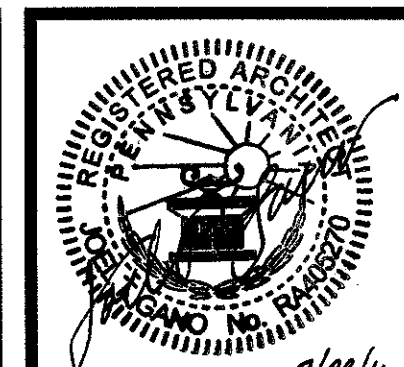


FRAME TYPES:



DOOR TYPES:

FULLY SPRINKLERED BUILDING BID DOCUMENTS



PARADIGM
 ENGINEERS AND CONSTRUCTORS
 PO BOX 436223
 Louisville, Kentucky 40253
 502-839-8511 www.paradigmusa.com

UPGRADE SPD AND SECURITY DOCK
 PROJECT: 646-367
 VA PITTSBURGH
 HEALTHCARE SYSTEM
 UNIVERSITY DRIVE C
 PITTSBURGH, PENNSYLVANIA 15240

Department of Veterans Affairs
 DATE: 7-28-11
 DRAWING NO.: A7.0
 DOOR SCHEDULES, TYPES AND DETAILS