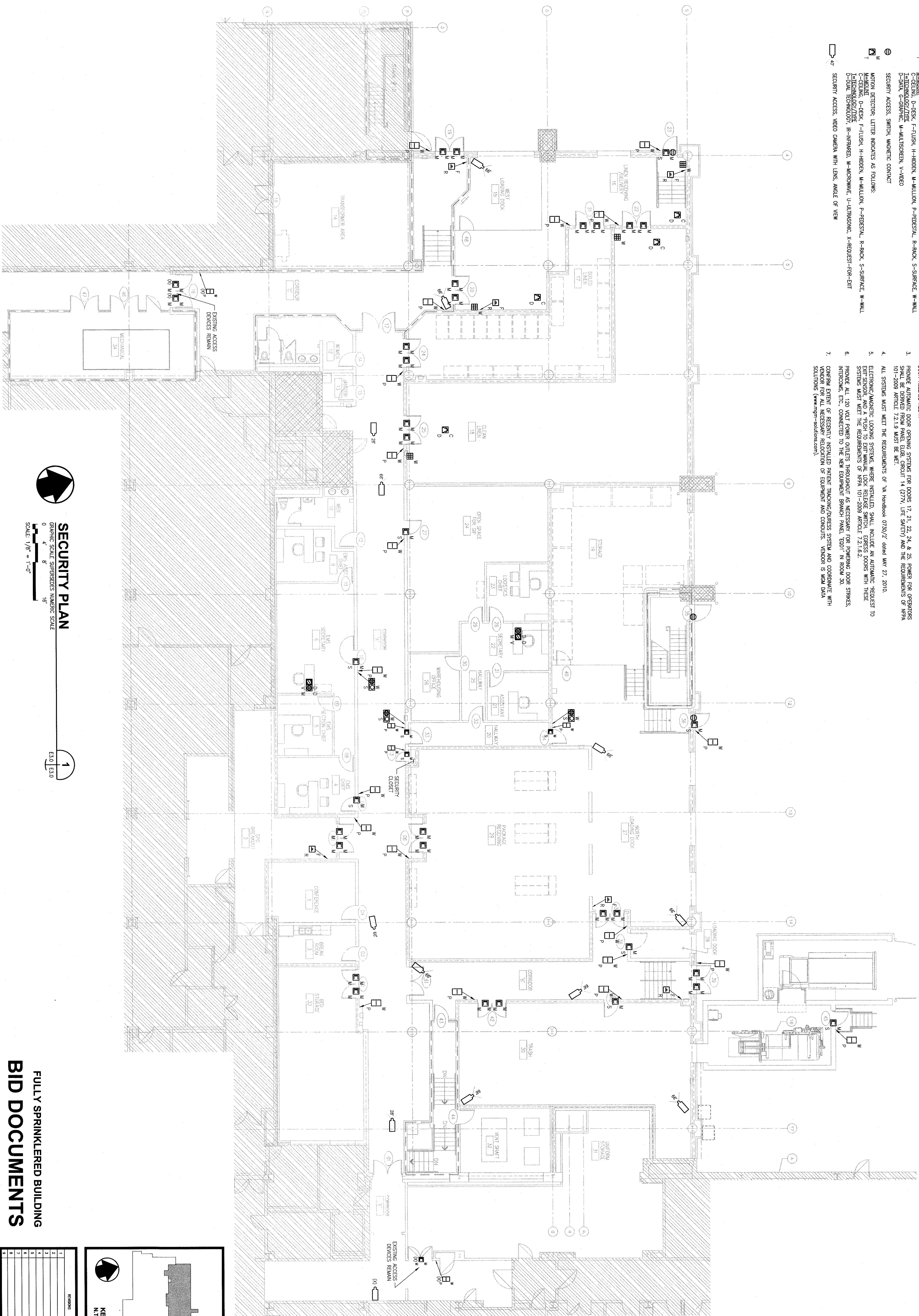


CARD ACCESS READER, LETTER INDICATES AS FOLLOWS:  
 C-CELLING, D-DESK, F-FLUSH, H-HIDDEN, M-MULLION, P-POSTERIAL, R-RACK, S-SURFACE, W-WALL  
 I-INTERLOCK/DOOR/TYPE  
 B-BRAND, M-MONUMENT, STRIP, P-PROXIMITY, S-SMART CARD  
 ELECTRONIC LOCK, LETTER INDICATES AS FOLLOWS:  
 M-MAGNETIC  
 D-DESK, F-FLUSH, H-HIDDEN, M-MULLION, P-POSTERIAL, S-SURFACE, W-WALL  
 I-INTERLOCK/DOOR/TYPE  
 D-DEADLOCK, H-HANDSET, L-LATCH SET, M-MAGNETIC, S-SWIRE  
 INTERCOM, LETTER INDICATES AS FOLLOWS:  
 C-CELLING, D-DESK, F-FLUSH, H-HIDDEN, M-MULLION, P-POSTERIAL, R-RACK, S-SURFACE, W-WALL  
 I-INTERLOCK/DOOR/TYPE  
 M-MOBILE, S-SPEAKERPHONE  
 SECURITY ACCESS, CONTROL UNIT WITH CLOSED CIRCUIT TELEVISION CAMERA  
 MONITOR, LETTER INDICATES AS FOLLOWS:  
 C-CELLING, D-DESK, F-FLUSH, H-HIDDEN, M-MULLION, P-POSTERIAL, R-RACK, S-SURFACE, W-WALL  
 I-INTERLOCK/DOOR/TYPE  
 D-DATA, G-GRAFIC, M-MULTISCREEN, V-VIDEO  
 SECURITY ACCESS, SWITCH, MONUMENT CONTACT  
 MOTION DETECTOR, LETTER INDICATES AS FOLLOWS:  
 M-MAGNETIC  
 D-DESK, F-FLUSH, H-HIDDEN, M-MULLION, P-POSTERIAL, R-RACK, S-SURFACE, W-WALL  
 I-INTERLOCK/DOOR/TYPE  
 D-DUAL, TECHNOLOGY, R-REINFORCED, M-MICROWAVE, U-ULTRASONIC, X-REQUEST-DOOR-EXIT  
 SECURITY ACCESS, VIDEO CAMERA WITH LENS, ANGLE OF VIEW

- M** VISION DEVICE; LETTER INDICATOR AS FOLLOWS:  
C-CENTING, D-DISK, F-FLASH, H-HIDDEN, M-MULTIPLAN, P-PEDISTAL, R-RACK, S-SURFACE, W-WALL  
**N** NOTATION  
T TYPING  
**M** MOUNTING  
PUSH BUTTON; LETTER INDICATORS AS FOLLOWS:  
C-CENTING, D-DISK, F-FLASH, H-HIDDEN, M-MULTIPLAN, P-PEDISTAL, R-RACK, S-SURFACE, W-WALL  
TELEPHONE/DIAL TYPE  
B-BELL, PUSH, D-DIRECT, P-PANIC, R-ROOM RELEASE, X-REQUEST, FOR EXT
- NOTES**
1. STAIR-UP CONDUITS FROM DEVICES TO ACCESSIBLE CLAIMS IN SECURE AREAS AND METAL A WHOLE-DOOR LOCKER (A) OR UNLOCKED CLAIM) PROVIDE FULL COMPLIANCE WITH CARBING AND FLAME, CONNECTION FOR SECURE ACCESS, SURVEILLANCE, AND INTERVIEW DETECTION SHALL BE PROVIDED BY OTHERS.
  2. PROVIDE COMBINATION CAMERA/INTERCOM SYSTEMS FOR DOORS 13 & 24, TO DESK OF SECRETARY 22, AND DOOR 10 TO DESK OF DESK SECRETARY 6, BASIS OF DESIGN, APPOINT JKS DESKS CONSISTING OF JK-1 AND MASTER MONITOR STATION, JK-10 VIDEO ROOM STATION, PS-1020L POWER SUPPLY, AND RS-1800 DOOR RELEASE, RELOC.
  3. PROVIDE AUTOMATIC DOOR OPENING SYSTEMS FOR DOORS 17, 21, 22, 24, & 25. POWER FOR OPERATIONS SHALL BE DERIVED FROM POWER CABLE (ENCLOSURE 14) (27V), LINE SAFETY AND THE REQUIREMENTS OF NFPA 101-2009 ARTICLE 7.12.10 MUST BE MET.
  4. ALL SYSTEMS MUST MEET THE REQUIREMENTS OF VA Handbook 0750-77 dated May 27, 2010.
  5. ELECTRONIC/MAGNETIC LOCKING SYSTEMS, WHEN INSTALLED, SHALL INCLUDE AN AUTOMATIC REQUEST TO EXIT SENSOR AND A PUSH TO EXIT MAGNETIC LOCK RELEASE SWITCH. THESE SYSTEMS MUST MEET THE REQUIREMENTS OF NFPA 101-2009 ARTICLE 7.12.1.6.2.
  6. PROVIDE ALL 120 VOLT POWER OUTLETS THROUGHOUT AS NECESSARY FOR POWERING DOOR STRIKES, INTERCOMS, ETC., CONNECTED TO THE NEW EQUIPMENT BRANCH PANEL, ECOT-1 IN ROOM 30.
  7. CONTROL PANEL OF RECEIPTLY INSTALLED PATIENT TRACKING/ADDRESS SYSTEM AND COORDINATE WITH VENDOR FOR ALL NECESSARY RELOCATION OF EQUIPMENT AND CONDUITS. VENDOR IS MOD DATA SOLUTIONS ([www.msi-solutions.com](http://www.msi-solutions.com)).

1. STAIR-UP CONDUITS FROM DEVICES TO ACCESSIBLE CEILINGS IN SECURE AREAS AND INSTALL A BUSH-PLASTED THE CABLE-TYPE STAIRS ABOVE CEILING TO SECURITY CLASP IN CORRIDOR A, IN AREAS WITH AN OPENED STRUCTURE AND SECURED CEILING PROHIBITING ACCESS TO THE CEILING.
2. THE REQUIREMENTS FOR SECURE AREAS, SINGLE-LEVEL, AND ANTI-THEFT DETECTION SHALL BE PROVIDED BY OTHERS.
3. POWER COMMUNITY CABLES/NETWORKS STRIPS FOR DOORS 13, 14, 15 AND 25 OF SECURITY 22, AND 26 UP TO DESK OF DESK SECRETARY 6, BASES OF DESKOR, AND STRIPS CONSISTING OF: 10-120V MASTER WARMER STATION, 3K-6A VIDEO DOOR STATION, PS-1820V, POWER SUPPLY, AND RT-18A DOOR RELEASE RELAY.
4. STAIRS MUST MEET THE REQUIREMENTS OF VA Handbook 0759-27 dated May 21, 2010.
5. ELECTRONIC/COMMUNITY CABLES STRIPS, WERE INSTALLED, SHALL INCLUDE AN AUTOMATIC RELEASE TO EXTENSION, AND A PLUSH TO EXTENDING CORD RELEASE SWITCH. CORDS DROPPED WITH THESE SYSTEMS WILL MEET THE REQUIREMENTS OF NPA-10-2009 April 21, 1.6.2.
6. PROVIDE ALL 120 VOLT POWER OUTLETS THROUGHOUT AS NECESSARY FOR POWERING DOOR STRIKES, COMMERCIAL ETC., CONNECTED TO THE NEW EQUIPMENT BRANCH PANEL, 2001 IN ROOM 30.
7. INFORM CLIENT OF SECURITY INSTALLED PARTIAL TROUBLESHOOTING/TESTS SYSTEM AND COORDINATE WITH VENDOR FOR ALL NECESSARY RELOCATION OF EQUIPMENT AND CONDUITS. VENDOR IS USED DATA SOURCES ([www.fairfax.com](http://www.fairfax.com)).



**GRAPHIC SCALE SUPERSEDES NUMERIC SCALE**

0 4 8 16'

SCALE: 1/8" = 1'-0"

1

E3.0	E3.0
------	------

A key plan map of the N.T.S. (Naval Test Station) area. The map shows the coastline of the United States, with the Gulf of Mexico to the south and the Atlantic Ocean to the east. A shaded rectangular area indicates the location of the site. A north arrow is located in the top left corner.

REMARKS		DATE
1		
2		
3		
4		
5		
6		
7		
8		
9		