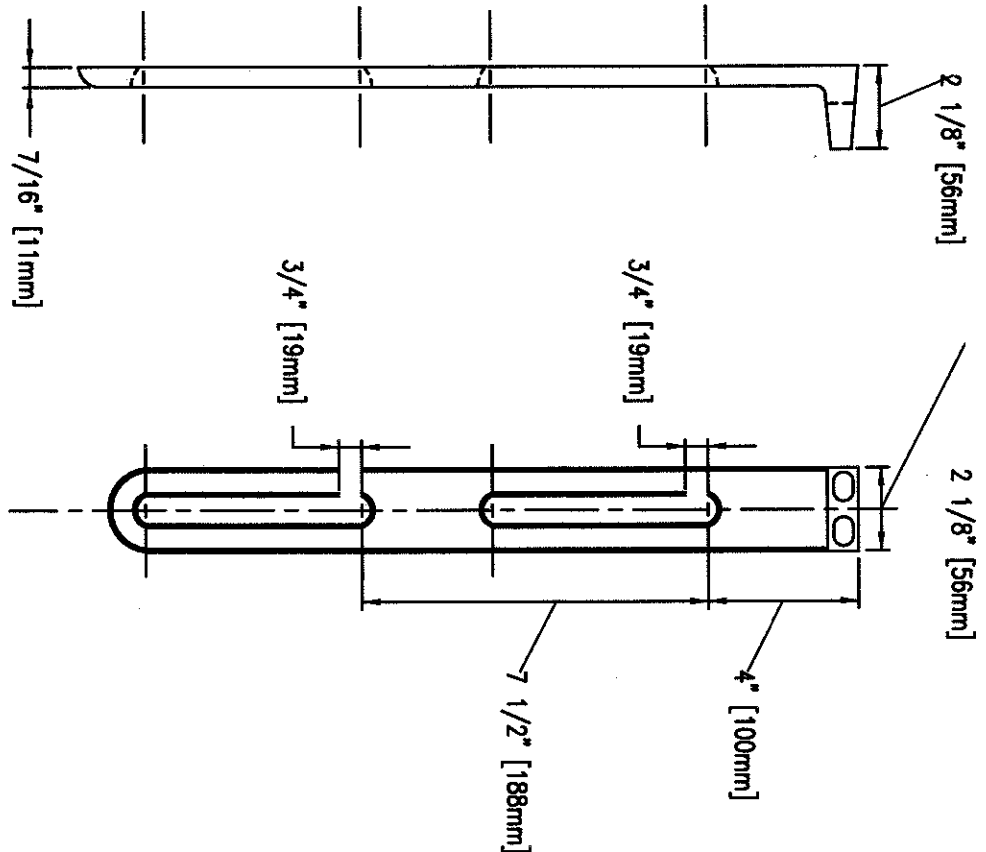
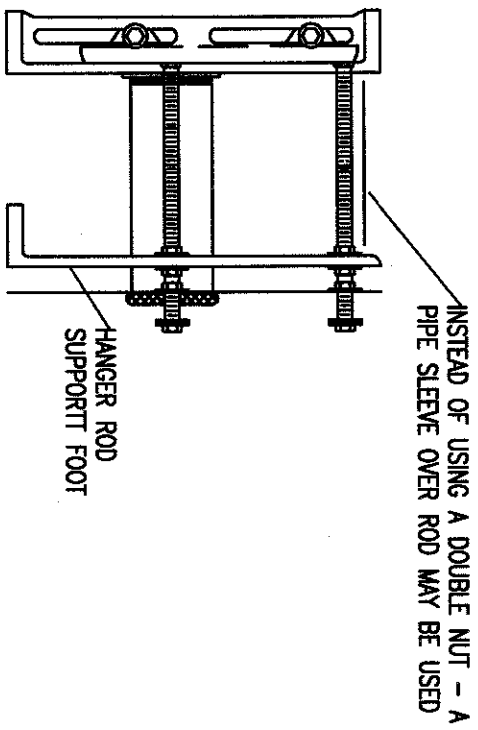
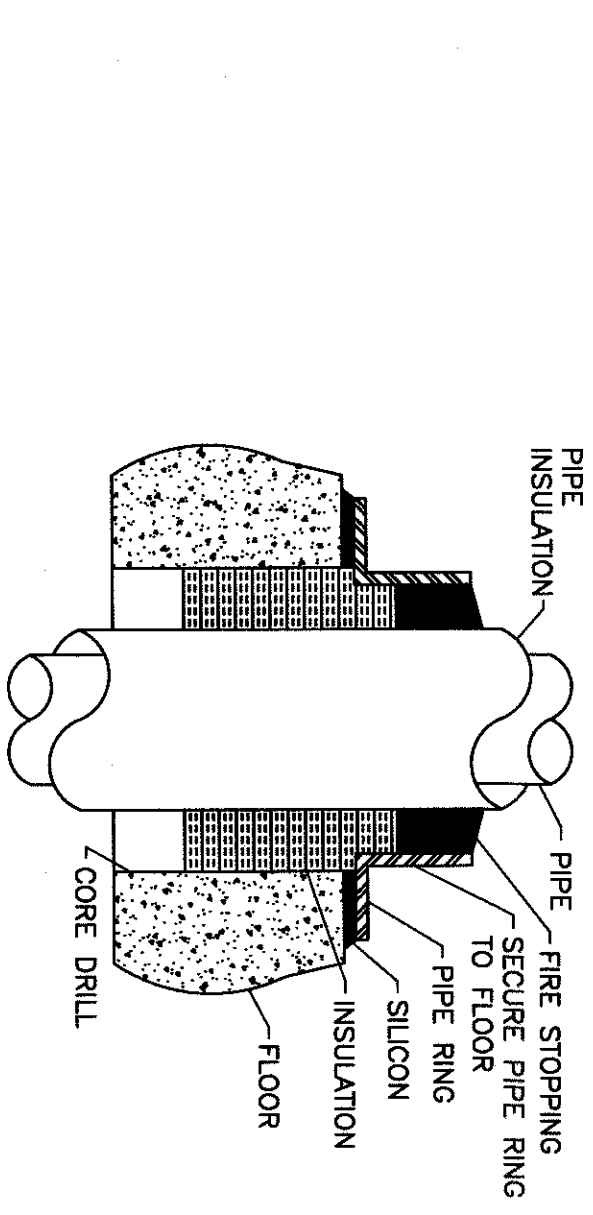
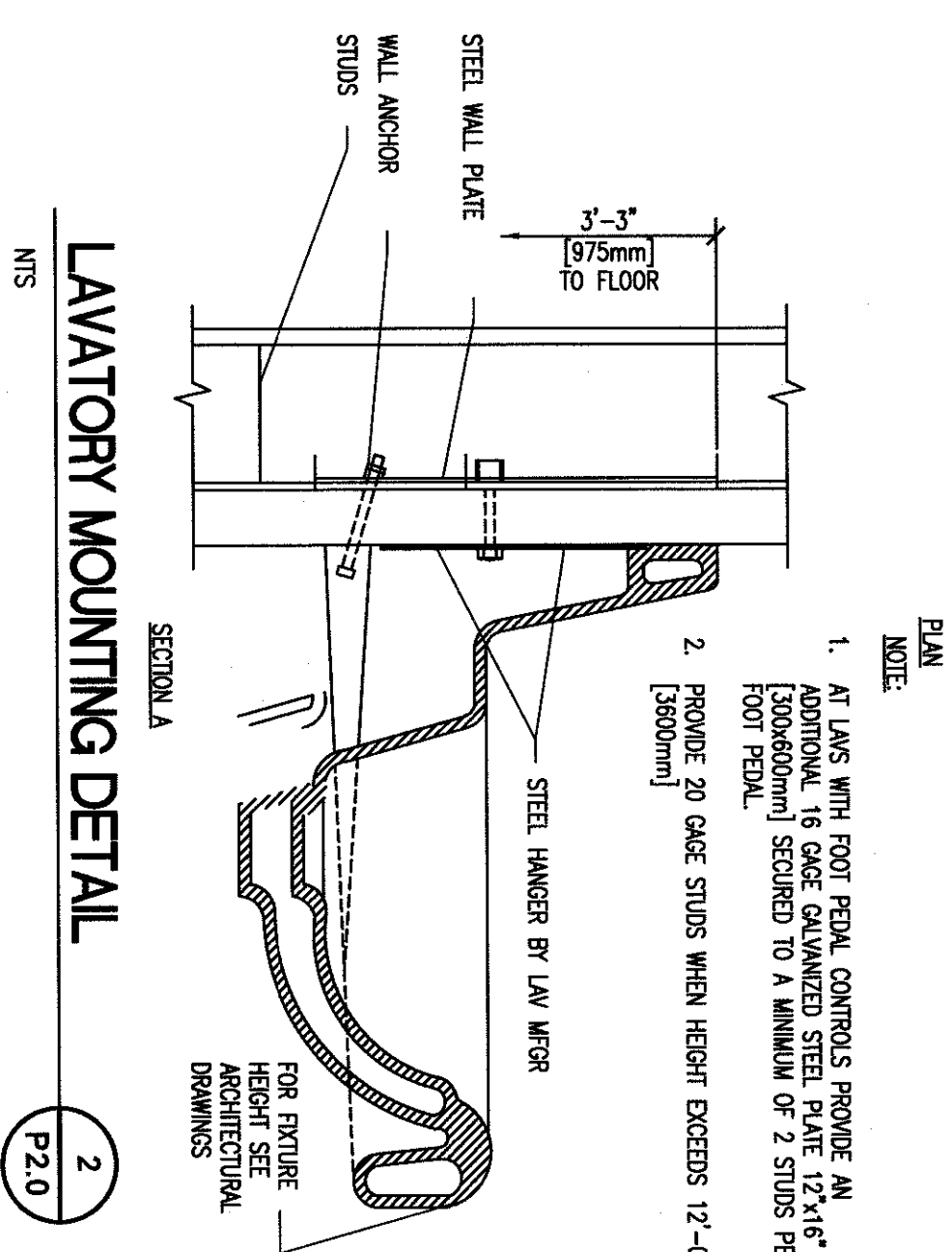
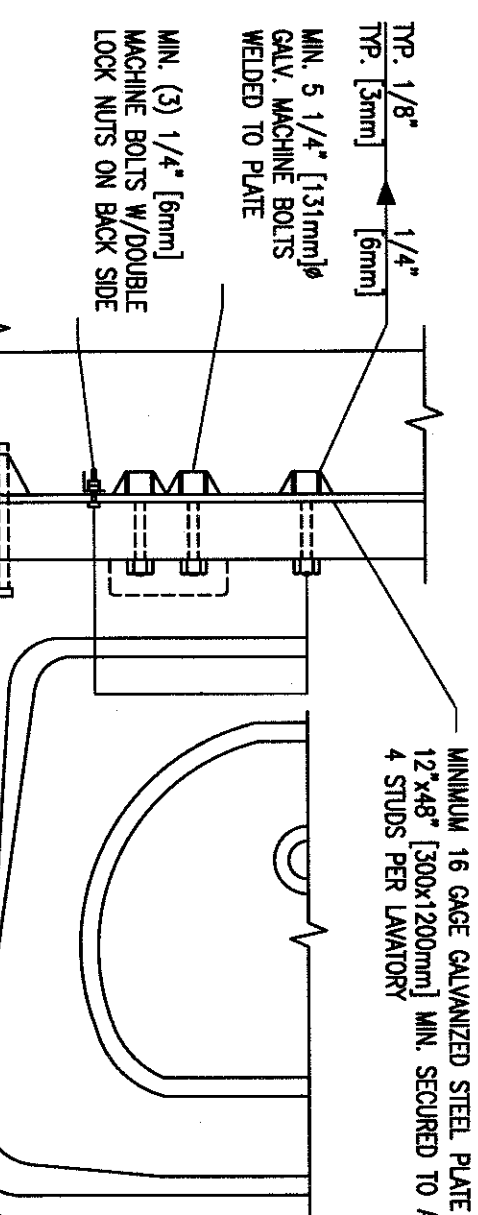


SCHEDULE OF PLUMBING FIXTURES AND SPECIALTIES											
MARK	FIGURE	MANUFACTURER	MODEL NO.	TYPE	MATERIAL	STYLE	Faucet / Valve				SYMBOL
							MANUFACTURER & MODEL	SPOUT	HANDLES	CONTROLS	
T1	TOILET	KOHLER	K-4320	WALL-MOUNTED	VITREOUS CHINA	EDUCATED	ZURN MODEL 28600AW	---	---	---	T1
U1	URINAL	KOHLER	K-4960-ET	WALL-MOUNTED	VITREOUS CHINA	---	ZURN MODEL 28600AW	---	---	---	U1
L1	LAVATORY	KOHLER	K-1180-4	SINK-RECESSED	VITREOUS CHINA	---	ZURN ADVANTAGE MODEL 28915	---	HANDS FREE	---	L1
MS1	WSP SINK	ZURN	Z1896-24	FLOOR-MOUNTED	HIGH-DENSITY COMPOSITE	---	AMERICAN STANDARD MODEL 584.110	---	BROS. TONE-MOUNTED	---	MS1
DS1	DOUBLE-WELL SINK	ELAY	DSR 3717	SELF-DRAINING	STAINLESS STEEL	---	ELAY MODEL LOCKER (MAIN SINK), ELAY LX1414 (CORNER)	---	CORNER/BACK	HANDLES	DS1

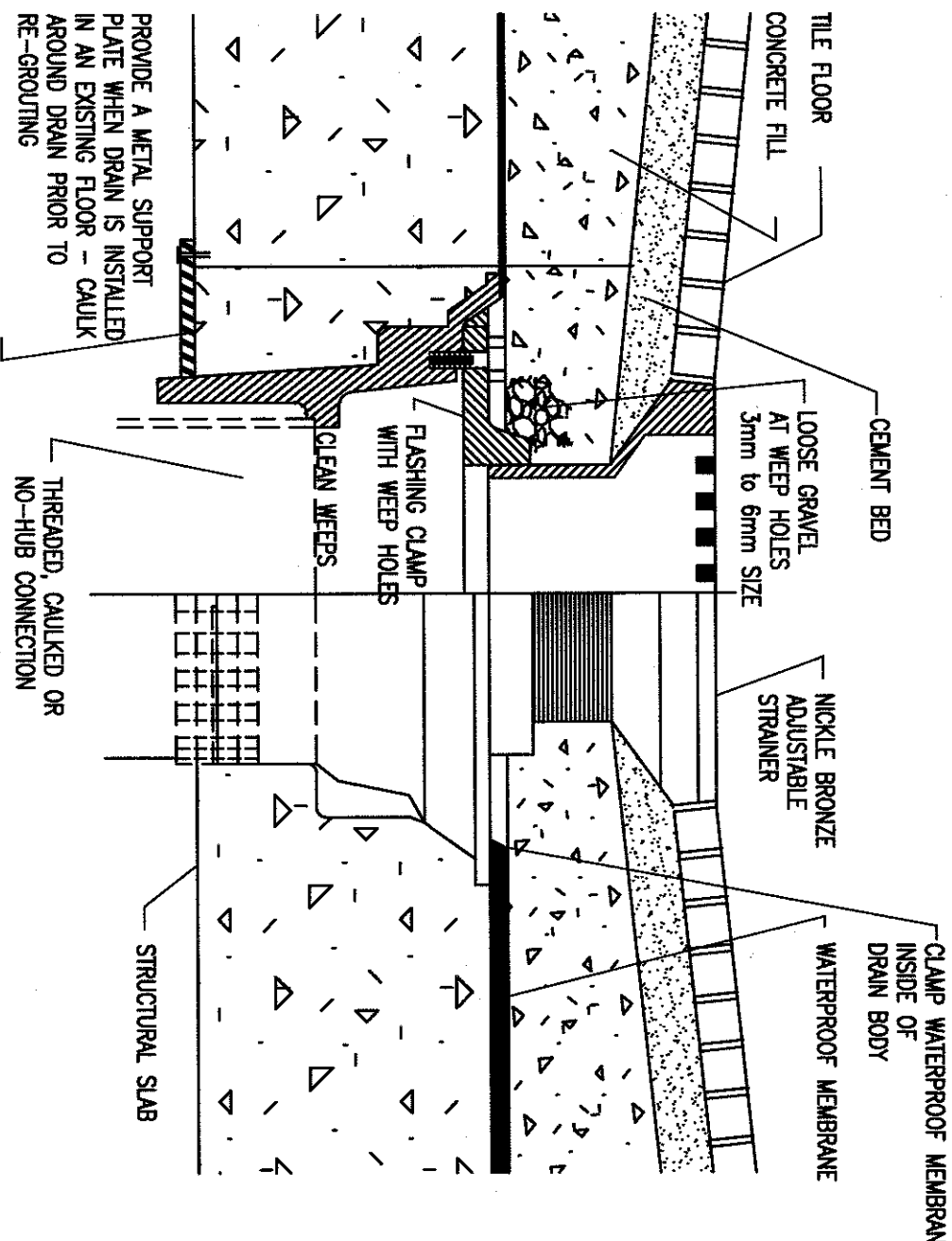
SCHEDULE OF PLUMBING DRAINS					
MARK	FIGURE	MANUFACTURER	MODEL NO.	TYPE	REMARKS
F01	FLOOR DRAIN	ZURN	FD-2554 OR HD-LOCK	NO HUB OR HUB-LOCK	NO HUB OR HUB-LOCK



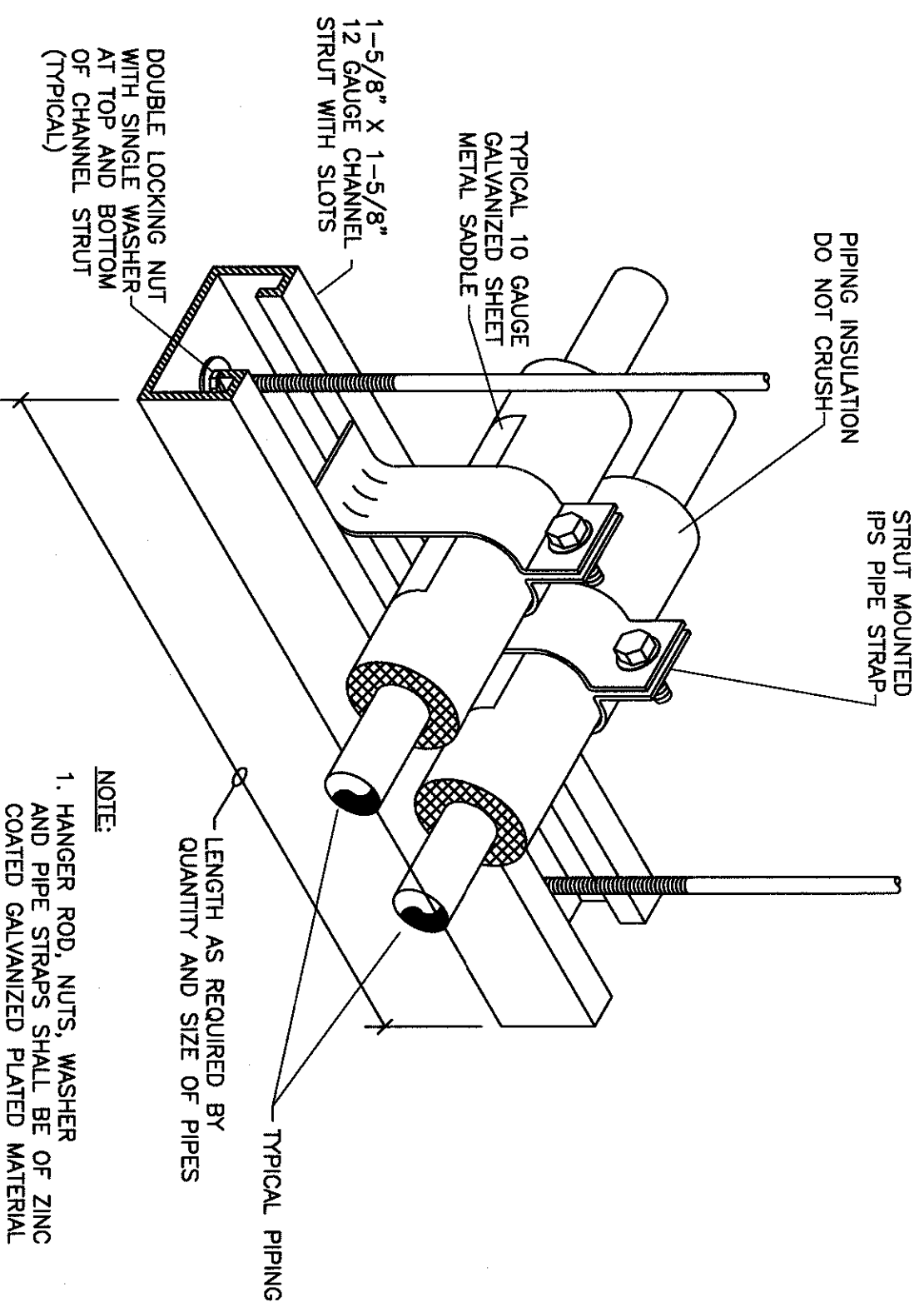
HANGER ROD SUPPORT FOOT



INSTALLATION OF HANGER SUPPORT FOOT

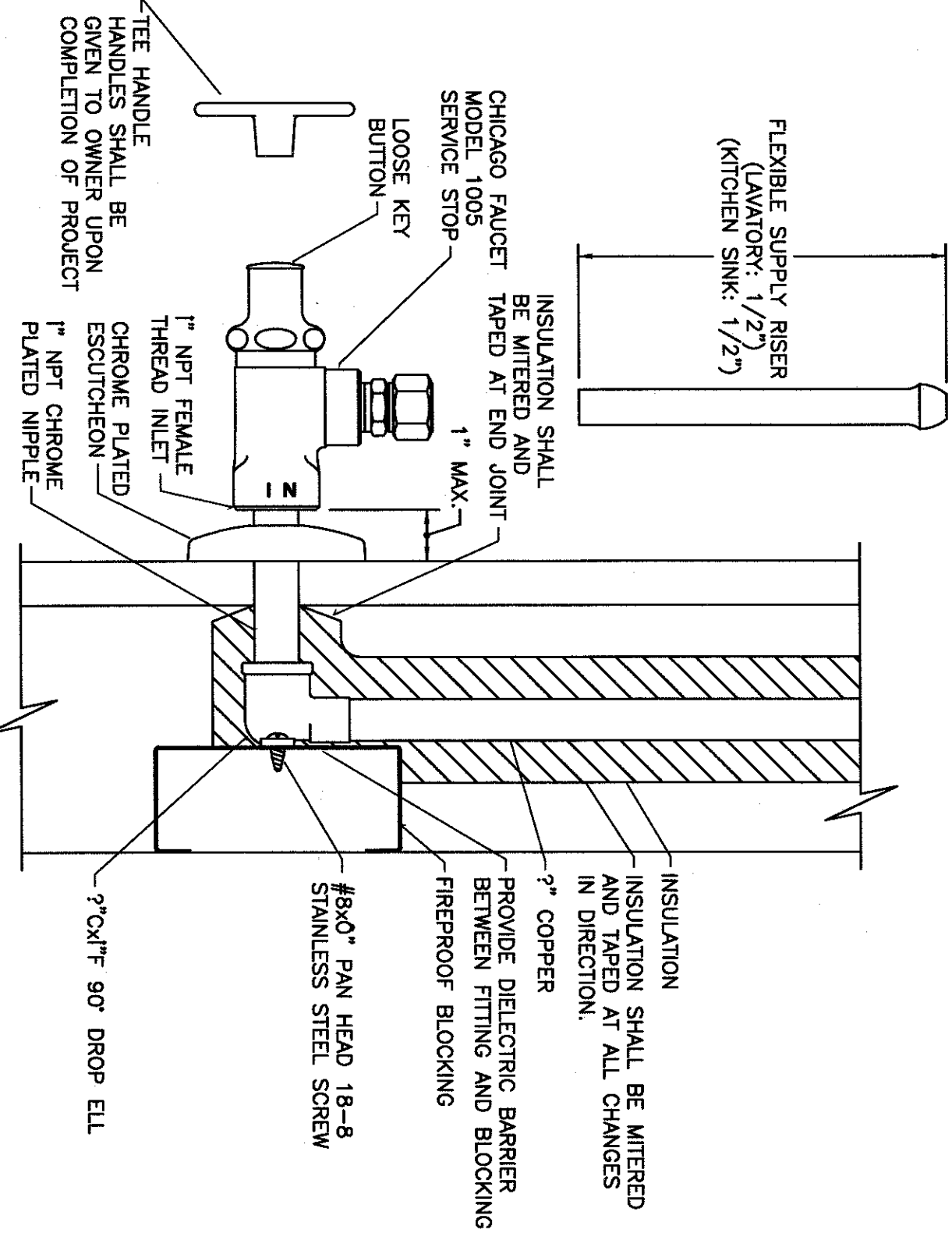


FLOOR DRAIN DETAIL

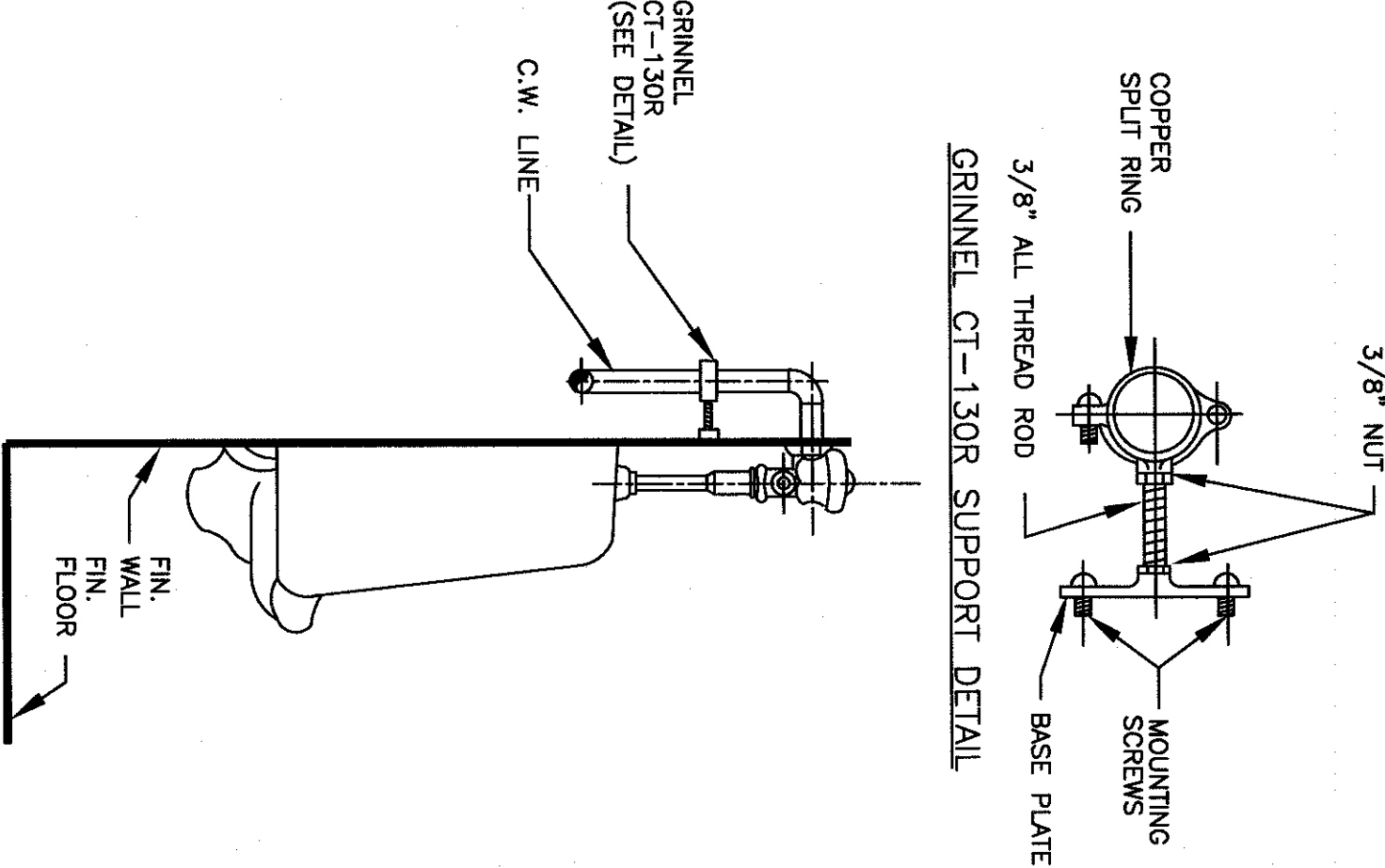


TRAPEZE INSULATED PIPE HANGER DETAIL

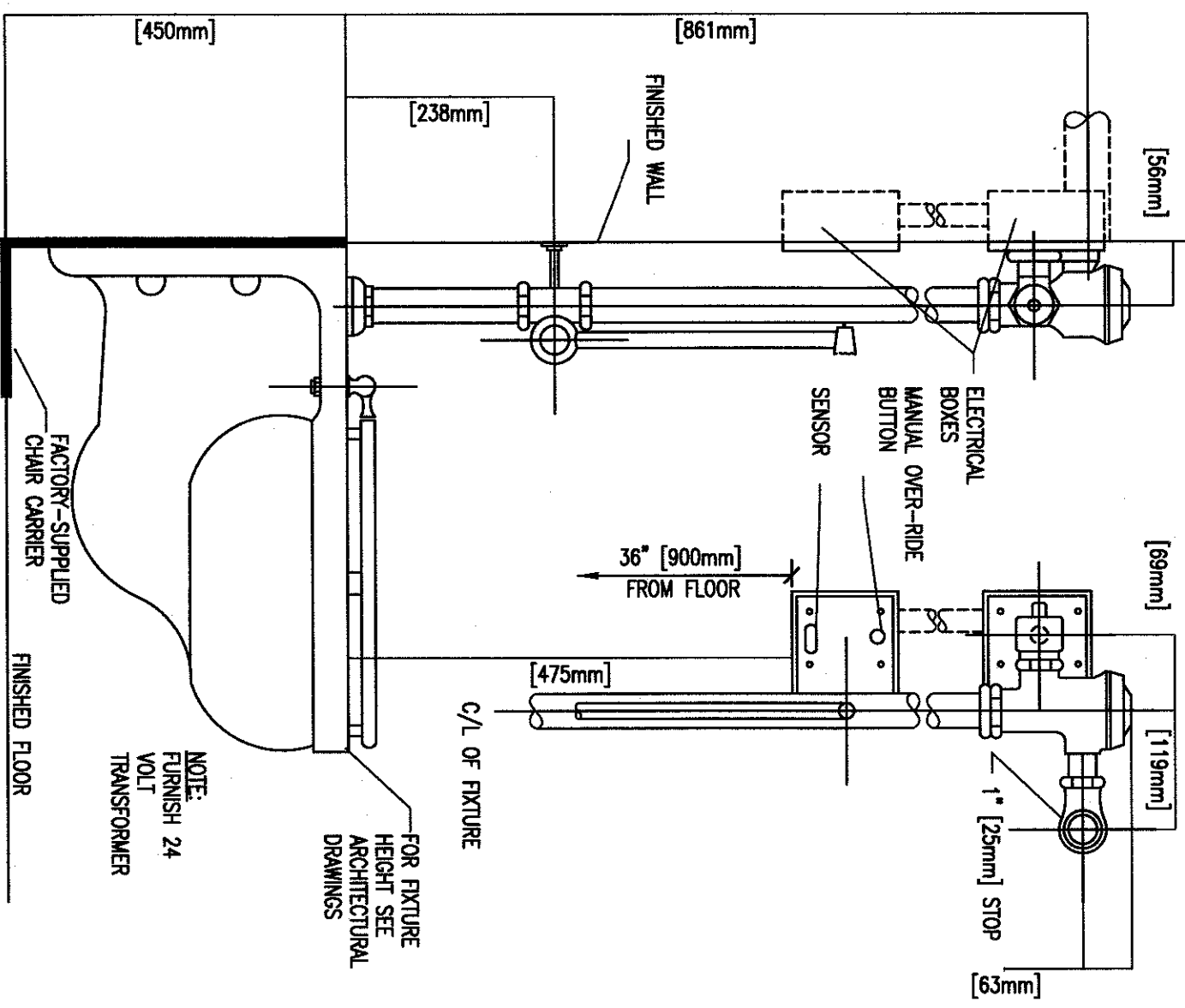
FIXTURE UNIT HOOK-UP SCHEDULE											
TYPE	WASTE PIPE SIZE, IN.	VENT PIPE SIZE, IN.	C/W SUPPLY, IN.	HW SUPPLY, IN.	DOMESTIC DW	DOMESTIC HW	DOMESTIC TW	SANITARY WASTE	SANITARY VENT	REMARKS	
WATER CLOSET	4"	2"	1-1/4"	---	---	---	---	4"	2"		
FLUSH VALVE	2"	2"	3/4"	---	---	---	---	1/2"	1/2"		
SINK/TOILET	1-1/2"	1-1/2"	1/2"	---	---	---	---	3"	1 1/2"		
LAVATORY	1-1/2"	1-1/2"	1/2"	---	---	---	---	3"	1 1/2"		
SERVICE SINK	3"	1-1/2"	1"	---	---	---	---	1 1/2"	1 1/2"		
WASH BASIN	---	---	---	---	---	---	---	---	---		
FLOOR DRAIN	3"	---	---	---	---	---	---	---	---		



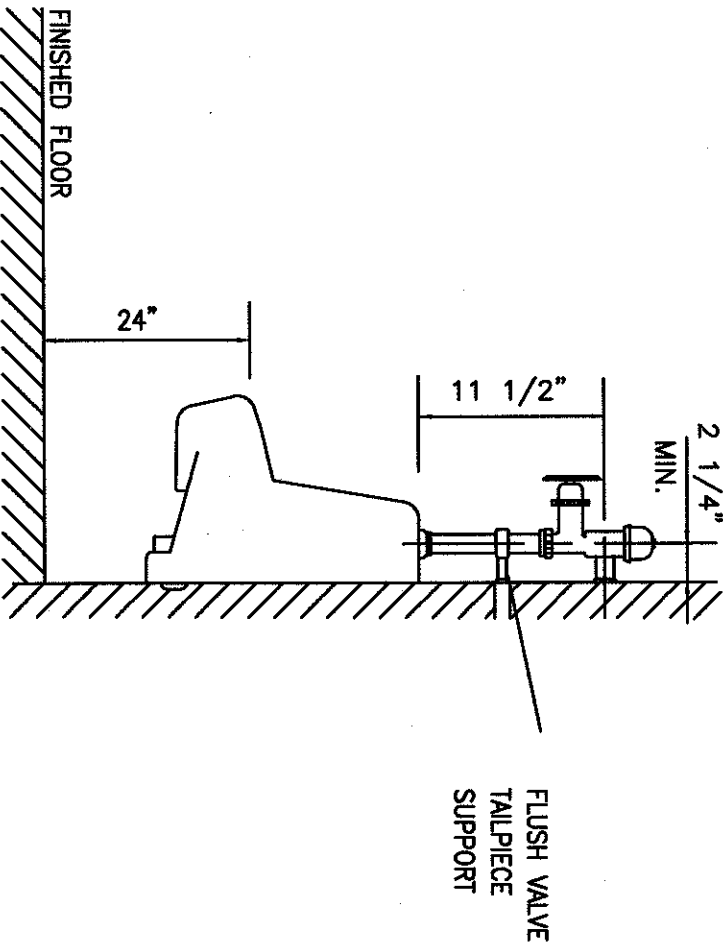
SERVICE STOP DETAIL



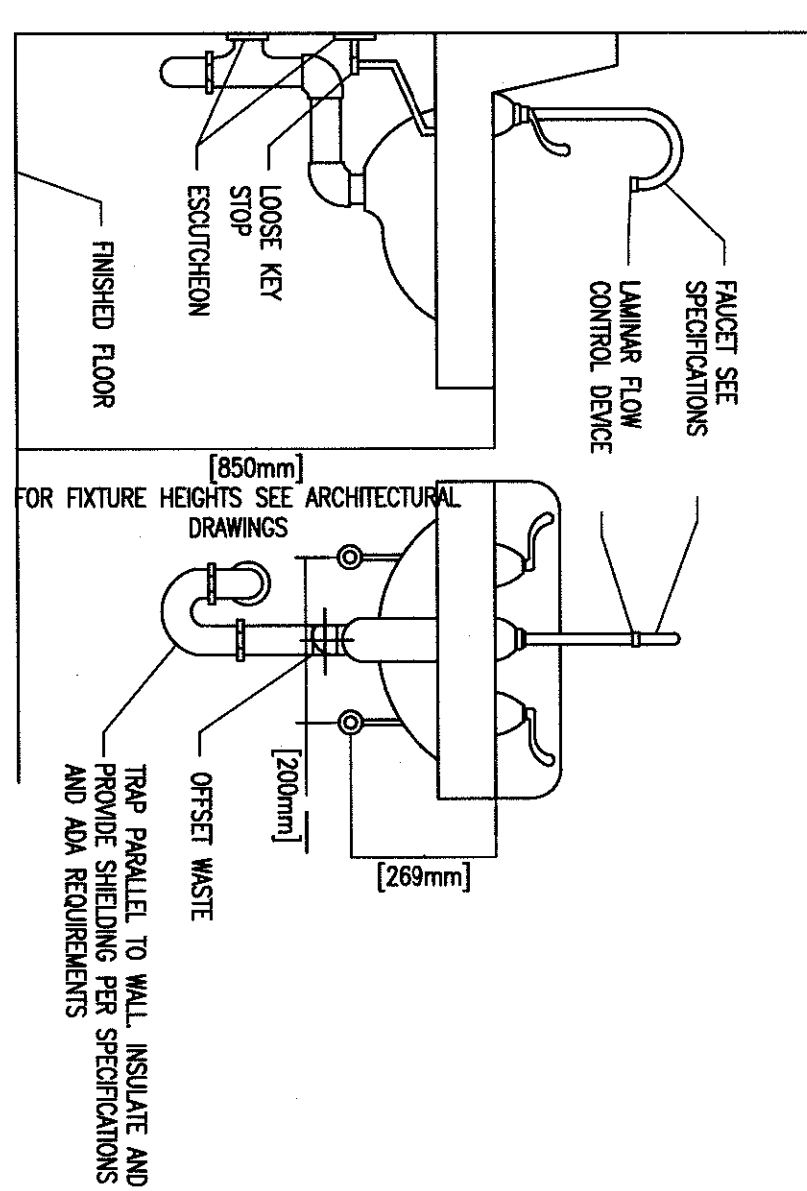
TYPICAL BRACKET AND GRINNEL CT-130R SUPPORT DETAIL FOR URINAL FLUSH VALVES



P-113 WATER CLOSET DETAIL - SENSOR OPERATED



URINAL FLUSH VALVE SUPPORT DETAIL



TYPICAL WHEEL CHAIR LAVATORY DETAIL

REVISIONS	DATE
1	
2	
3	
4	
5	
6	
7	
8	

DATE	7-28-11
DESIGNED	
CHECKED	
PLUMBING DETAILS AND SCHEDULES	
DRAWING NO.	P2.0
REV. NO.	



Department of
Veterans Affairs

UPGRADE SPD AND SECURITY DOCK
PROJECT: 646-367
VA PITTSBURGH
HEALTHCARE SYSTEM
UNIVERSITY DRIVE C
PITTSBURGH, PENNSYLVANIA 15240

PARADIGM
ENGINEERS AND CONSTRUCTORS
PO BOX 436223
Louisville, Kentucky 40253
502-338-8511 www.paradigmusa.com

