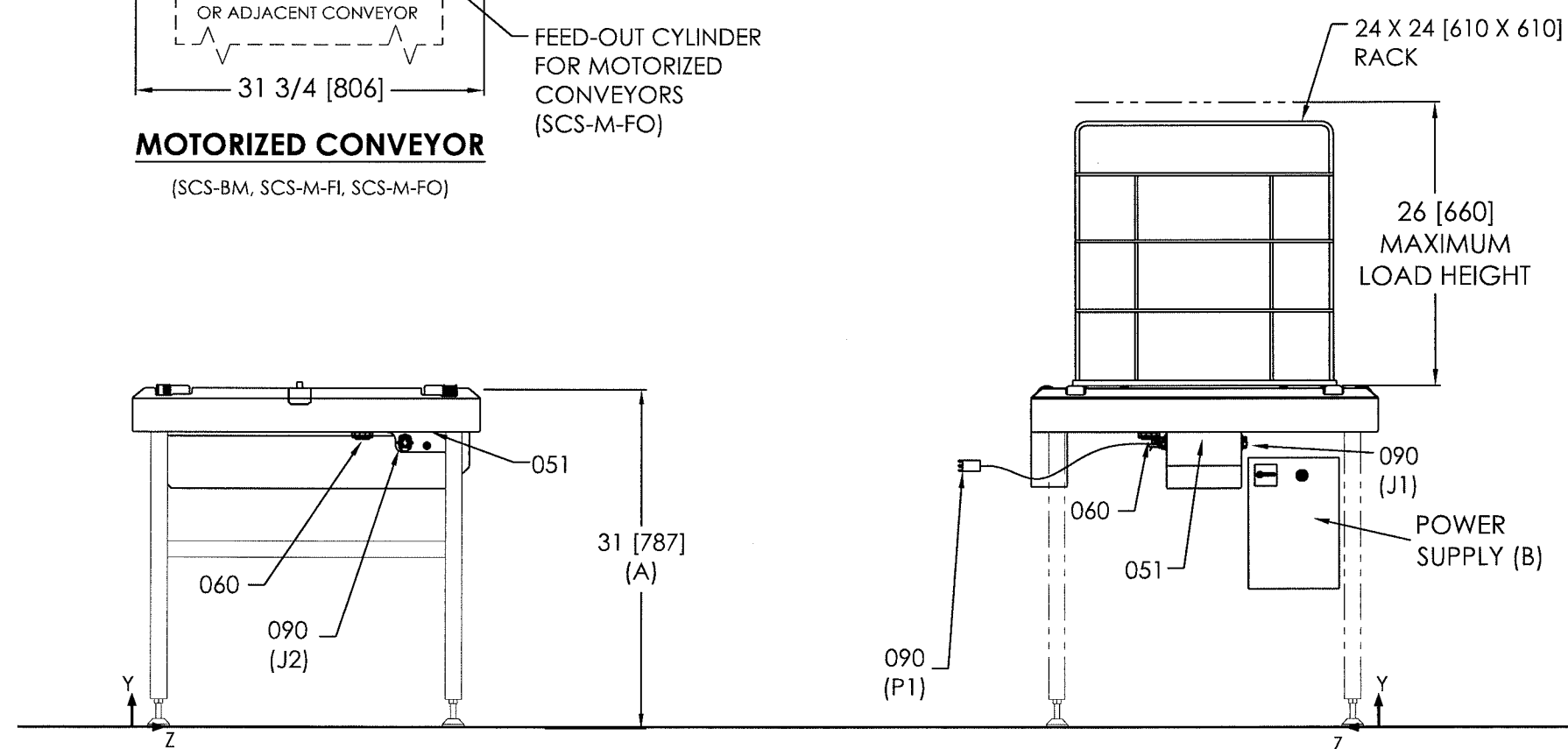


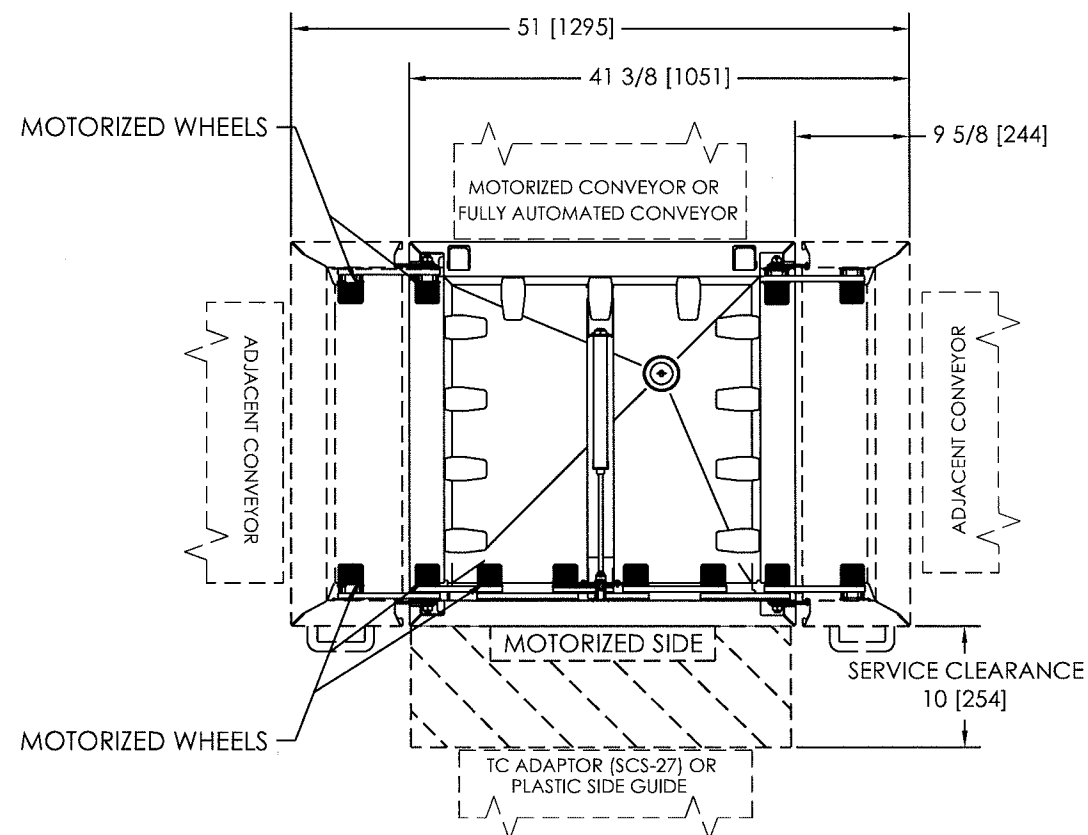
INTERFACE LEGEND	
051	- AIR (IF FEED-OUT/ FEED-IN FEATURE)
060	- DRAIN CONNECTION
090	- ELECTRICAL SUPPLY DC RECEPTACLE :J2
	- COMMUNICATION RECEPTACLE: J1 (FOR DOWNSTREAM CONVEYOR/WASHER CONNECTION)
	- COMMUNICATION PLUG: P1 (FOR UPSTREAM CONVEYOR/WASHER CONNECTION)
~	PHASE

CONNECTION POSITION WITH REFERENCE POINT			
	SCS		
	X	Y	Z
051	27 1/2 [699]	27 [686]	16 [406]
060	20 7/8 [530]	26 3/8 [670]	20 7/8 [530]

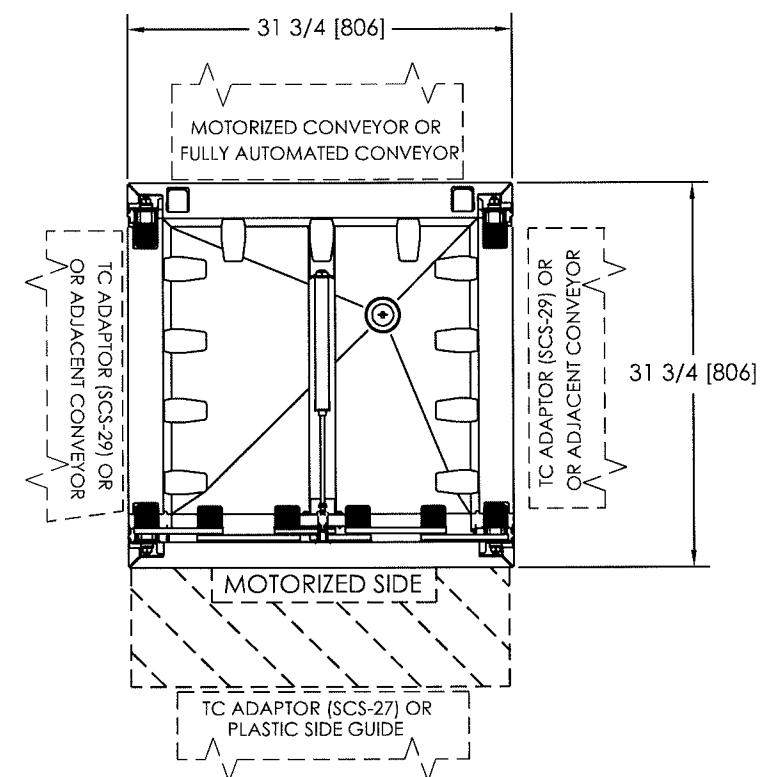


INTERFACE LEGEND	
051	- AIR
060	- DRAIN CONNECTION
090	- ELECTRICAL SUPPLY DC RECEPTACLE :J2
	- COMMUNICATION RECEPTACLE: J1 (PUSH) (FOR CONVEYOR RECEIVING RACK BY CYLINDER)
	- COMMUNICATION RECEPTACLE: J1 (FOR CONVEYOR RECEIVING RACK BY MOTORIZED WHEELS)
	- COMMUNICATION PLUG: P1 (FOR UPSTREAM CONVEYOR CONNECTION)

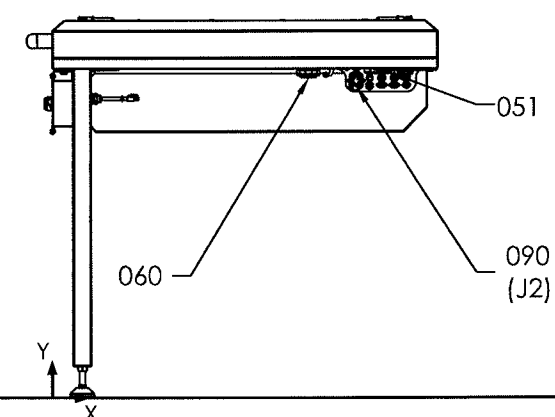
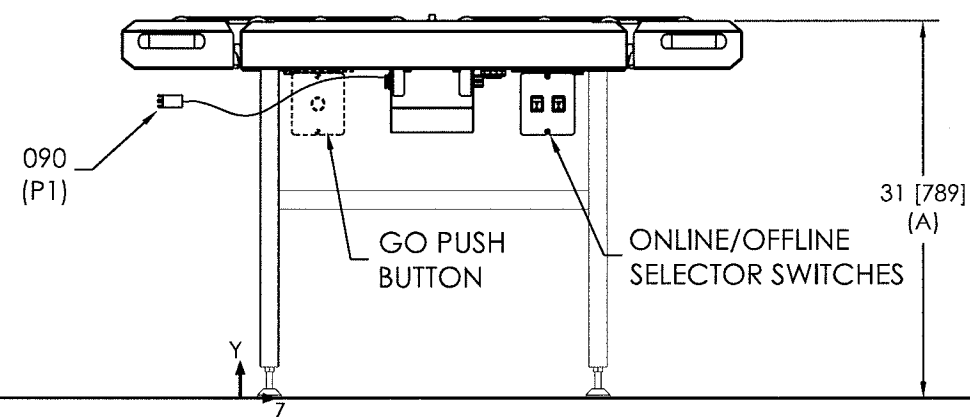
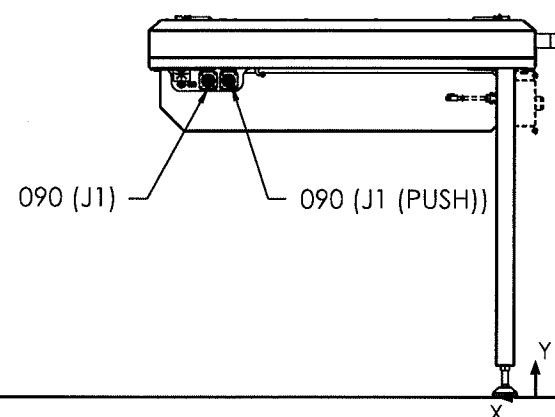
CONNECTION POSITION WITH REFERENCE POINT			
	SCS		
	X	Y	Z
051	29 1/2 [750]	26 3/4 [680]	15 7/8 [405]
060	20 7/8 [530]	25 3/4 [655]	20 7/8 [530]

**FULLY AUTOMATED CONVEYOR WITH LIFT GATE**

(SCS-FA-L-ULG, SCS-FA-L-DLG, SCS-FA-L-2LG, SCS-FA-R-ULG, SCS-FA-R-DLG, SCS-FA-R-2LG)

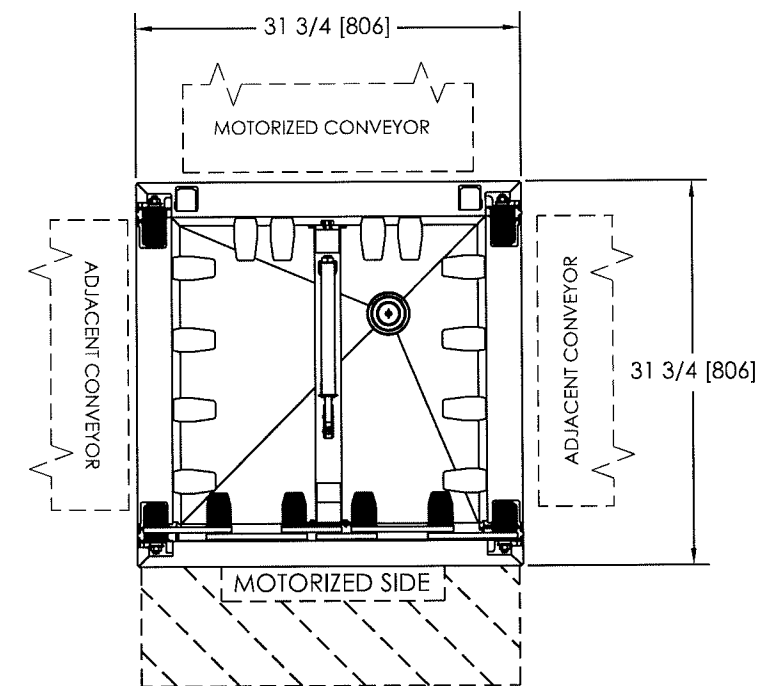
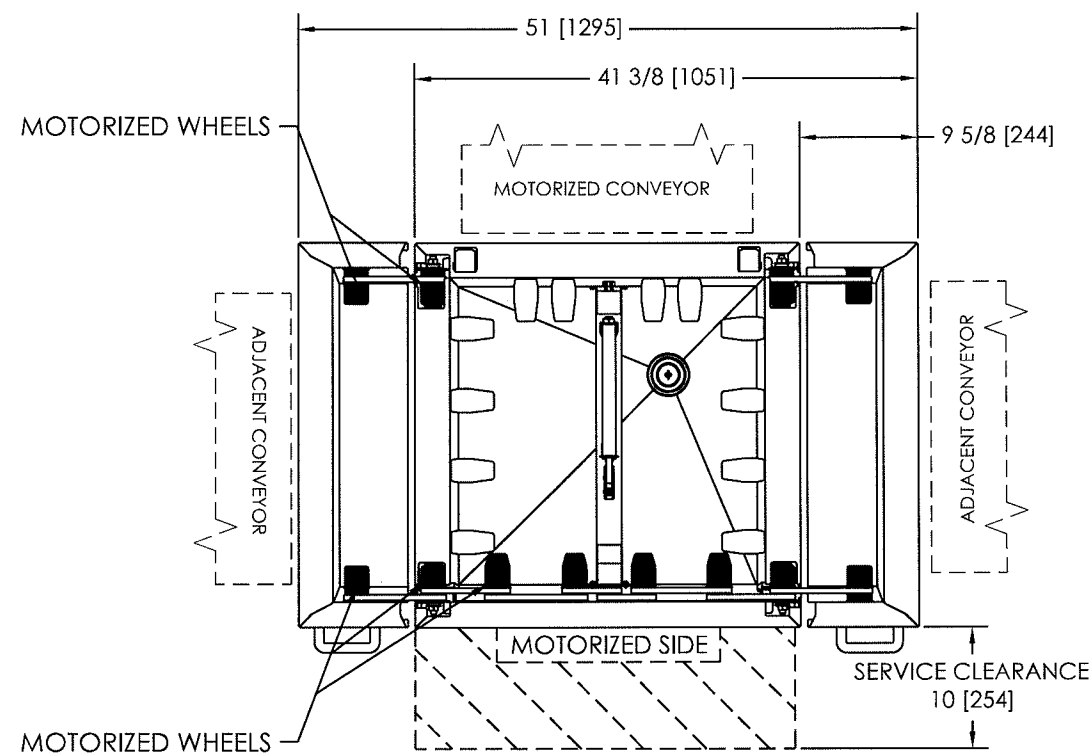
**FULLY AUTOMATED CONVEYOR**

(SCS-FA-L, SCS-FA-R)



INTERFACE LEGEND	
051	- AIR
060	- DRAIN CONNECTION
090	- ELECTRICAL SUPPLY DC RECEPTACLE :J2
	- COMMUNICATION RECEPTACLE: J1
	- COMMUNICATION PLUG: P1 ROLL (RECEIVING RACK FROM MAIN FLOW UPSTREAM CONVEYOR)
	- COMMUNICATION PLUG: P1 (RECEIVING RACK FROM WASHER'S FLOW UPSTREAM CONVEYOR)

CONNECTION POSITION WITH REFERENCE POINT			
	SCS		
	X	Y	Z
051	27 3/4 [705]	27 [686]	15 7/8 [405]
060	20 7/8 [530]	25 3/4 [655]	20 7/8 [530]

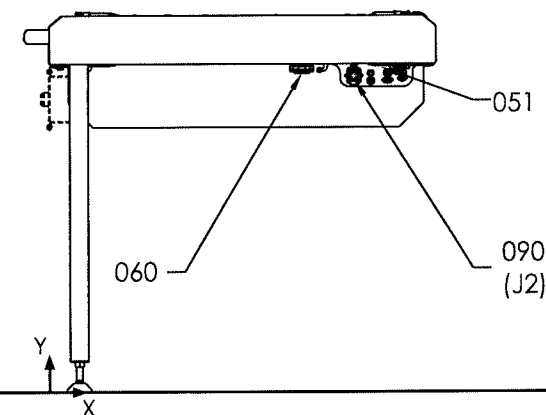
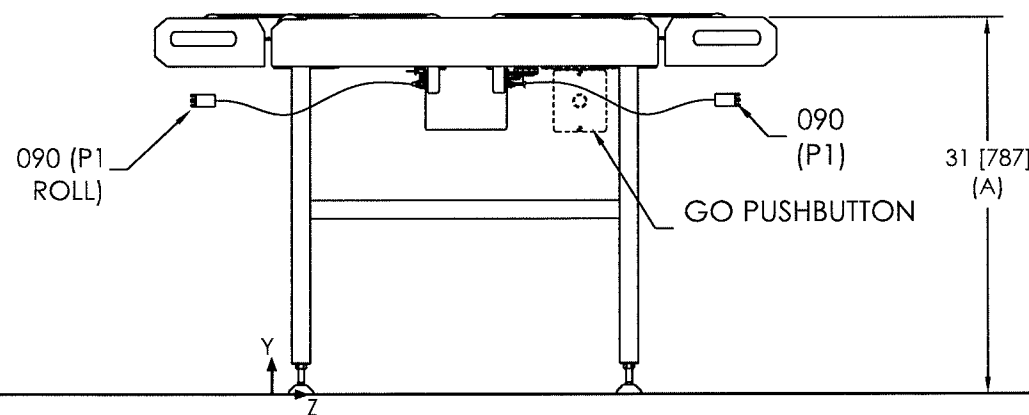
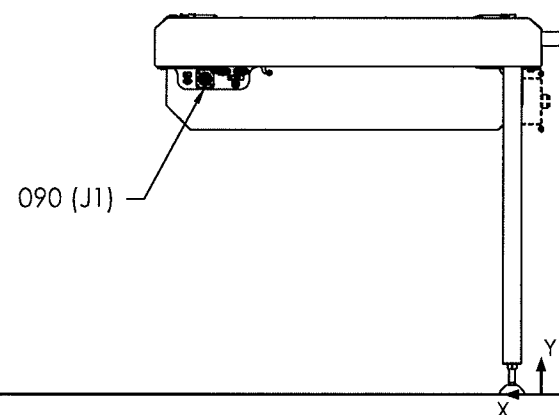


**FULLY AUTOMATED UNLOAD CONVEYOR WITH LIFT GATE**

(SCS-FAU-L-ULG, SCS-FAU-L-DLG, SCS-FAU-L-2LG, SCS-FAU-R-ULG, SCS-FAU-R-DLG, SCS-FAU-R-2LG)

**FULLY AUTOMATED UNLOAD CONVEYOR**

(SCS-FAU-L, SCS-FAU-R)



STERIS Canada Corporation

This document contains confidential and proprietary information of STERIS Corporation. Neither this document nor the information herein are to be reproduced, distributed, used or disclosed, either in part or in whole, except as specifically authorized by STERIS Corporation.

TITLE SCS CONVEYOR SYSTEM  
FULLY AUTOMATED UNLOAD CONVEYORS  
DOMESTIC

DWN. Christine Fortier

Drawing Number

920506414.B

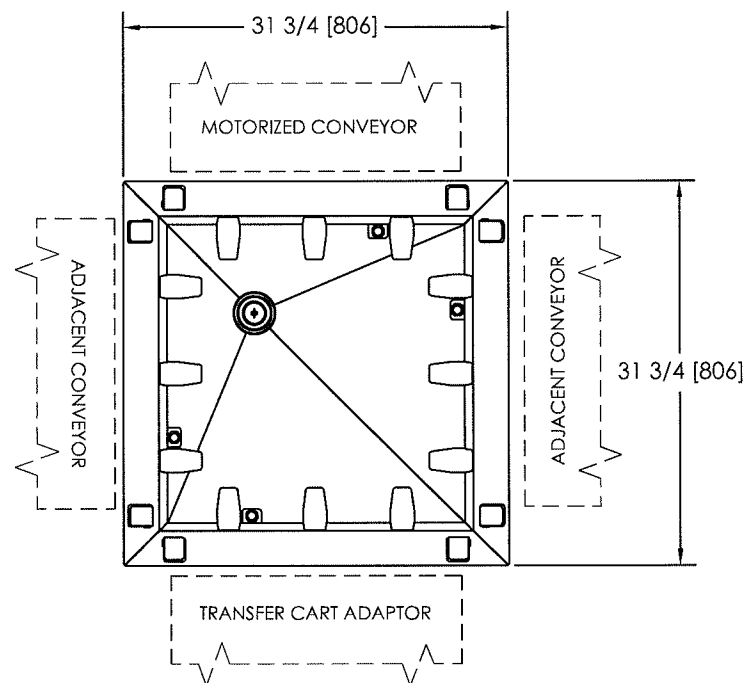
Released

INTERFACE LEGEND

- |     |   |
|-----|---|
| 060 | - DRAIN CONNECTION  |
| 090 | - ELECTRICAL SUPPLY DC RECEPTACLE :J2   |
|     | - COMMUNICATION PLUG: P1 ROLL<br>(RECEIVING RACK FROM MAIN FLOW UPSTREAM<br>CONVEYOR) |
|     | - COMMUNICATION PLUG: P1<br>(RECEIVING RACK FROM WASHER'S FLOW<br>UPSTREAM CONVEYOR)  |

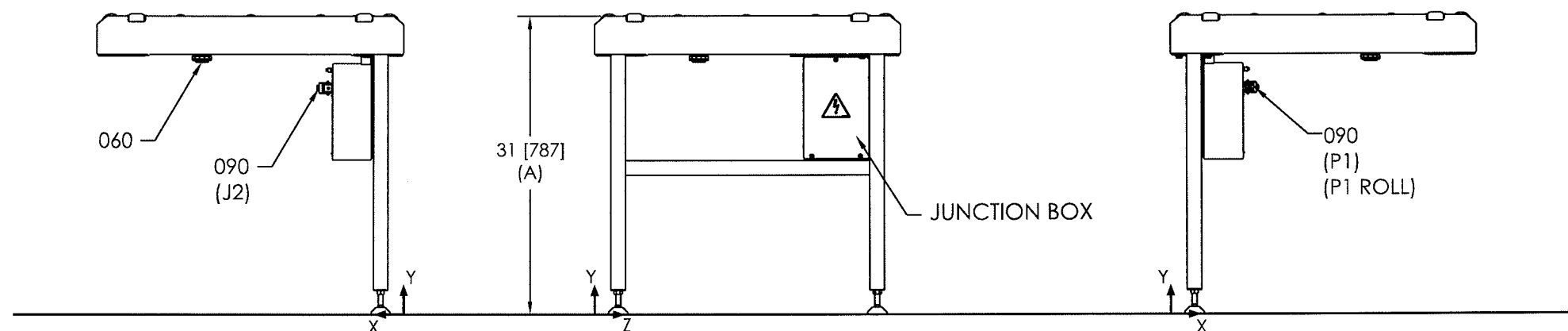
CONNECTION POSITION WITH REFERENCE POINT

	SCS		
	X	Y	Z
060	20 7/8 [530]	25 3/4 [655]	10 7/8 [530]



**FULLY AUTOMATED UNLOAD  
LINE END CONVEYOR**

(SCS-FAU-LE)



STERIS Canada Corporation

This document contains confidential and proprietary information of STERIS Corporation. Neither this document nor the information herein are to be reproduced, distributed, used or disclosed, either in part or in whole, except as specifically authorized by STERIS Corporation.

TITLE SCS CONVEYOR SYSTEM  
FULLY AUTOMATED UNLOAD LINE END CONVEYOR  
DOMESTIC

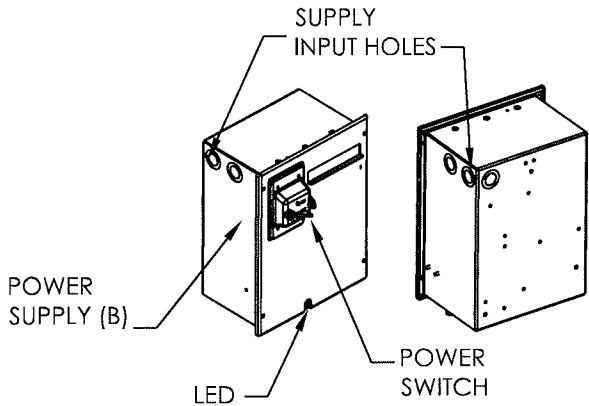
DWN. Christine Fortier

Drawing Number

920506414.B

POWER SUPPLY INFORMATION CHART

Supply box Input (Main) Voltage	Customer Supply wires	Frequency	Required Protection
120Vac (1~) (F)	L+N+PE	60 Hz	15 A
200-240Vac (1~)	L+L+PE	60 Hz	
200-240Vac (1~)	L+N+PE	50 Hz	
200-480Vac (3~)	L+L+PE	50/60 Hz	
380-480Vac (3~)	L+N+PE	50/60 Hz	
OUTPUT VOLTAGE		24V DC	
MAX. CAPACITY PER POWER SUPPLY (G)		4 POWERED CONVEYORS	
MAX. CAPACITY PER CIRCUIT DISCONNECT SWITCH	120V (F)	2 POWER SUPPLIES	
	200V +	4 POWER SUPPLIES	

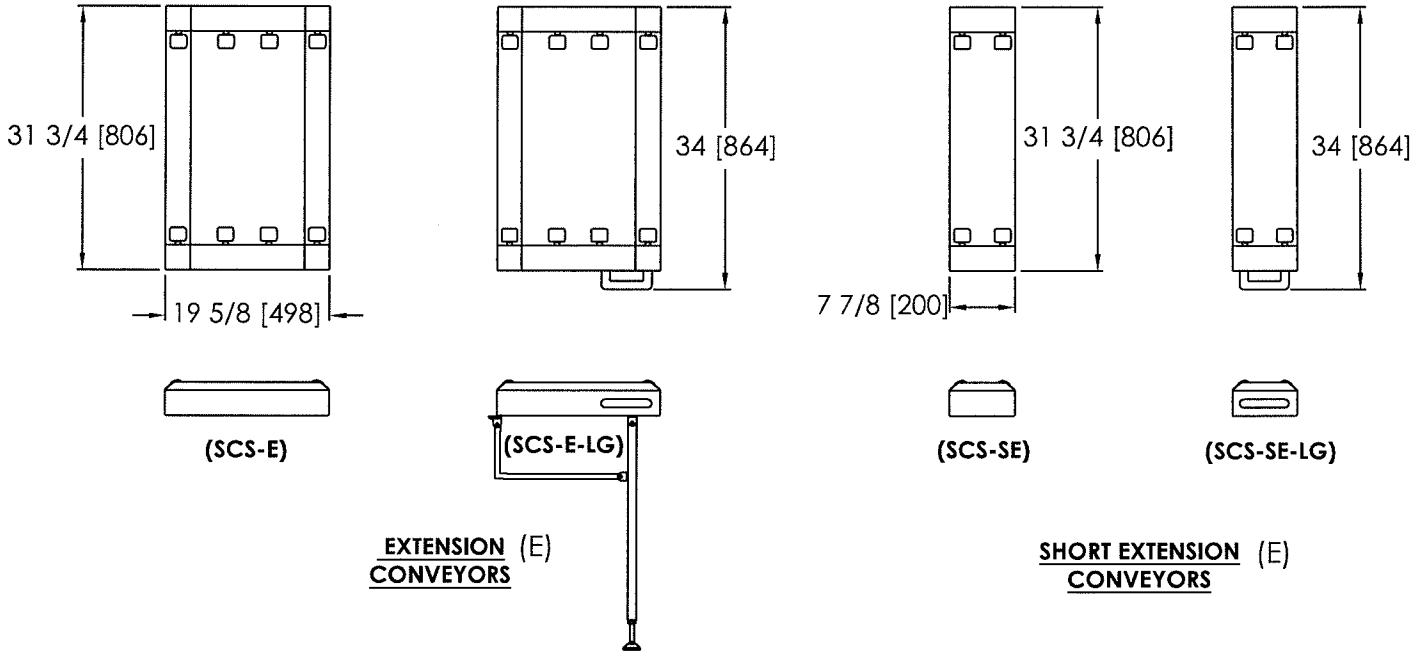


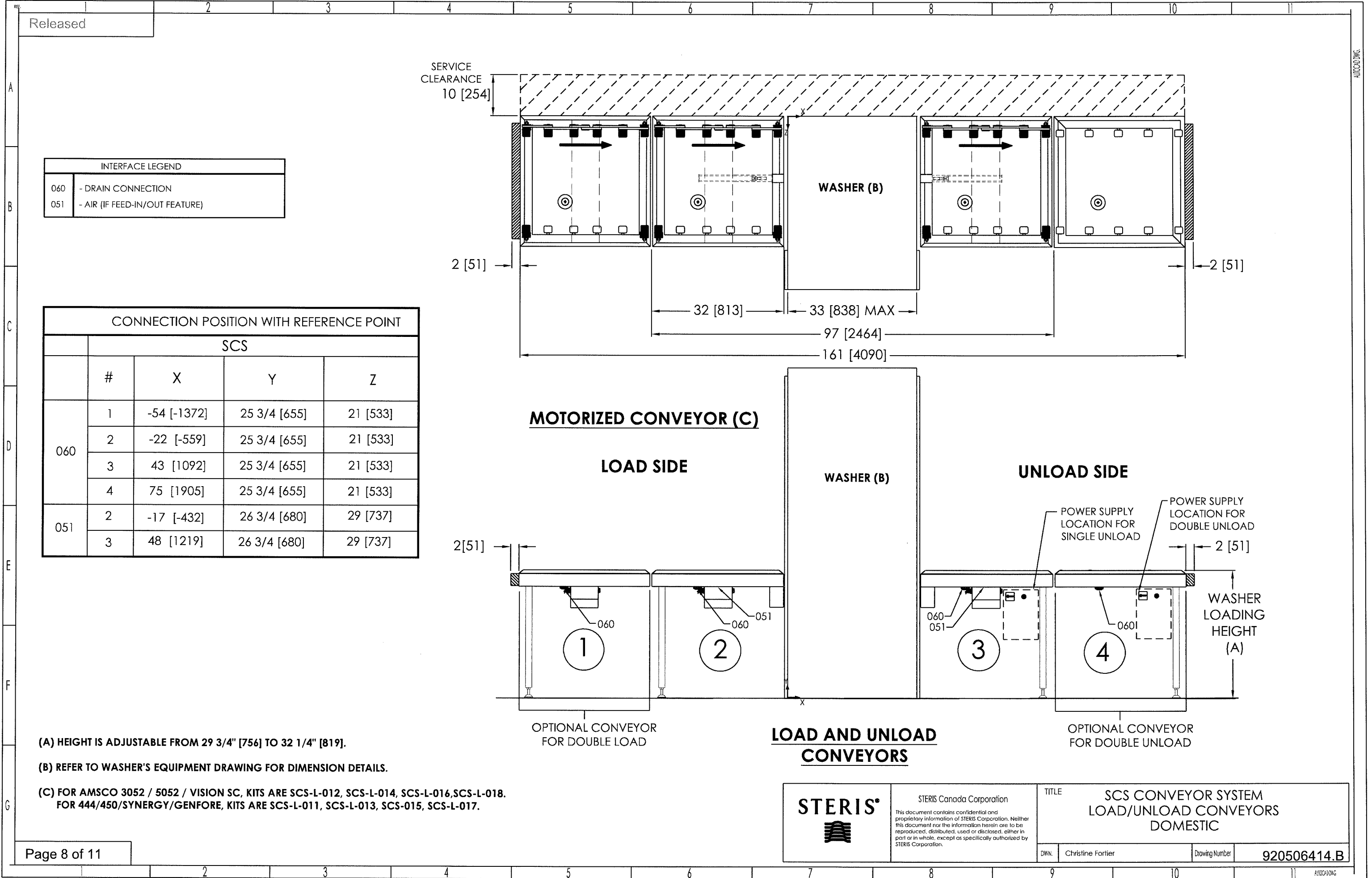
- NOTES:
- (A) HEIGHT IS ADJUSTABLE FROM 29" [737] TO 33" [838] .
  - (B) POWER SUPPLY SHOULD BE PLACED UNDERNEATH CONVEYOR. EXACT POSITION MUST BE SPECIFIED ON THE LAYOUT. A DISCONNECT SWITCH MUST BE INSTALLED ON THE ELECTRICAL LINE.
  - (C) A TEE ADAPTOR IS PROVIDED BY STERIS.
  - (D) A DRAIN CONNECTION KIT FOR UP TO 4 CONVEYORS IS AVAILABLE AS AN ACCESSORY (SCS-10).
  - (E) EXTENSION CONVEYORS ARE ALWAYS ATTACHED TO CONVEYORS.
  - (F) FOR 120 VAC INPUT VOLTAGE, A DIP SWITCH MUST BE SET TO THE 120 VOLTS POSITION IN THE POWER SUPPLY BOX.
  - (G) A MAXIMUM OF 4 POWERED CONVEYORS (MOTORIZED CONVEYORS AND NON-MOTORIZED CONVEYORS WITH FEED-OUT) PER POWER SUPPLY. EACH CONVEYOR IS INDIVIDUALLY CONNECTED (IN PARALLEL).
- SCS-LE OR SCS-2W-LE CONVEYORS SHOULD NOT BE CONSIDERED AS POWERED BECAUSE THEY ARE NOT CONNECTED TO A POWER SUPPLY. THESE CONVEYORS ARE POWERED BY BEING CONNECTED TO THE UPSTREAM MOTORIZED CONVEYOR.
- DISCONNECT SWITCHES ARE NOT PROVIDED BY STERIS.

- GENERAL NOTES:
1. CUSTOMER MUST BE SURE THAT MACHINE STANDS ON A NON-COMBUSTIBLE FLOOR.
  2. ALL CONNECTIONS SHOULD BE IN ACCORDANCE WITH LOCAL CODES.
  3. MAIN SUPPLY MUST BE PERMANENTLY CONNECTED.

UTILITY REQUIREMENTS CHART

	DESCRIPTION	CONNECTION		PRESSURE RANGE (DYNAMIC)	OPERATING CONSUMPTION
		TYPE	SIZE		
051	AIR (C) (Connected to washer supply )	Pneumatic Coupling	5/32 [4]	SAME AS WASHER (80 DYNAMIC TO 125 STATIC PSIG [550-860 kPa])	(1 SCFM [1.8 M³/H])
060	DRAIN (D)	MALE	1 1/2 [38]		
090	ELECTRICAL (See Power Supply table)	CONDUIT	1/2 [13]		
	SHIPPING DIMENSION W x H x L AND WEIGHT				36"[914] X 13"[330] X 35 1/2"[902] 88 Lbs [40Kg]
	MAXIMUM WEIGHT FOR ONE MODULE AND ITS LOAD				225 LB [102 Kg]






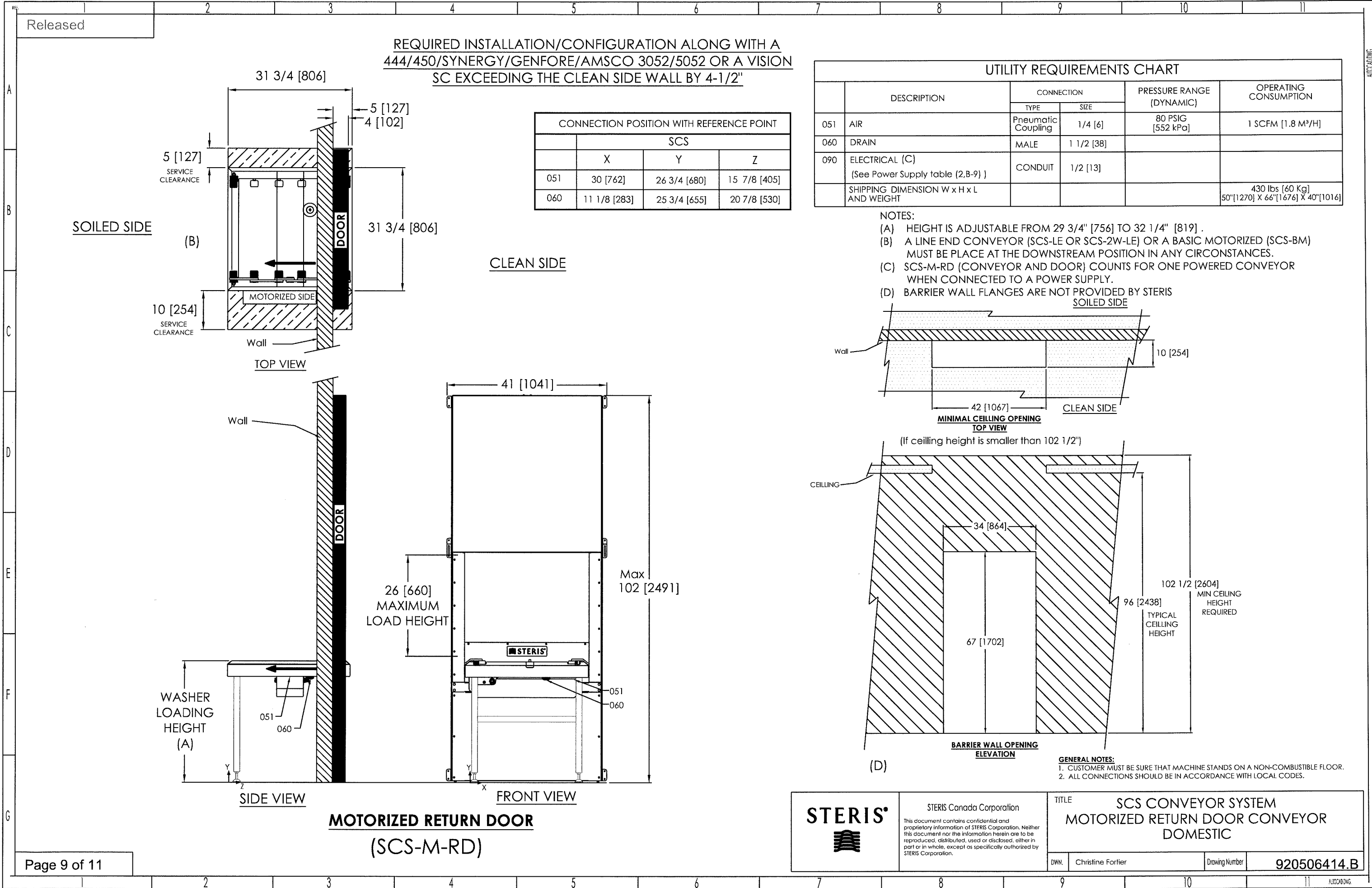
(A) HEIGHT IS ADJUSTABLE FROM 29 3/4" [756] TO 32 1/4" [819].

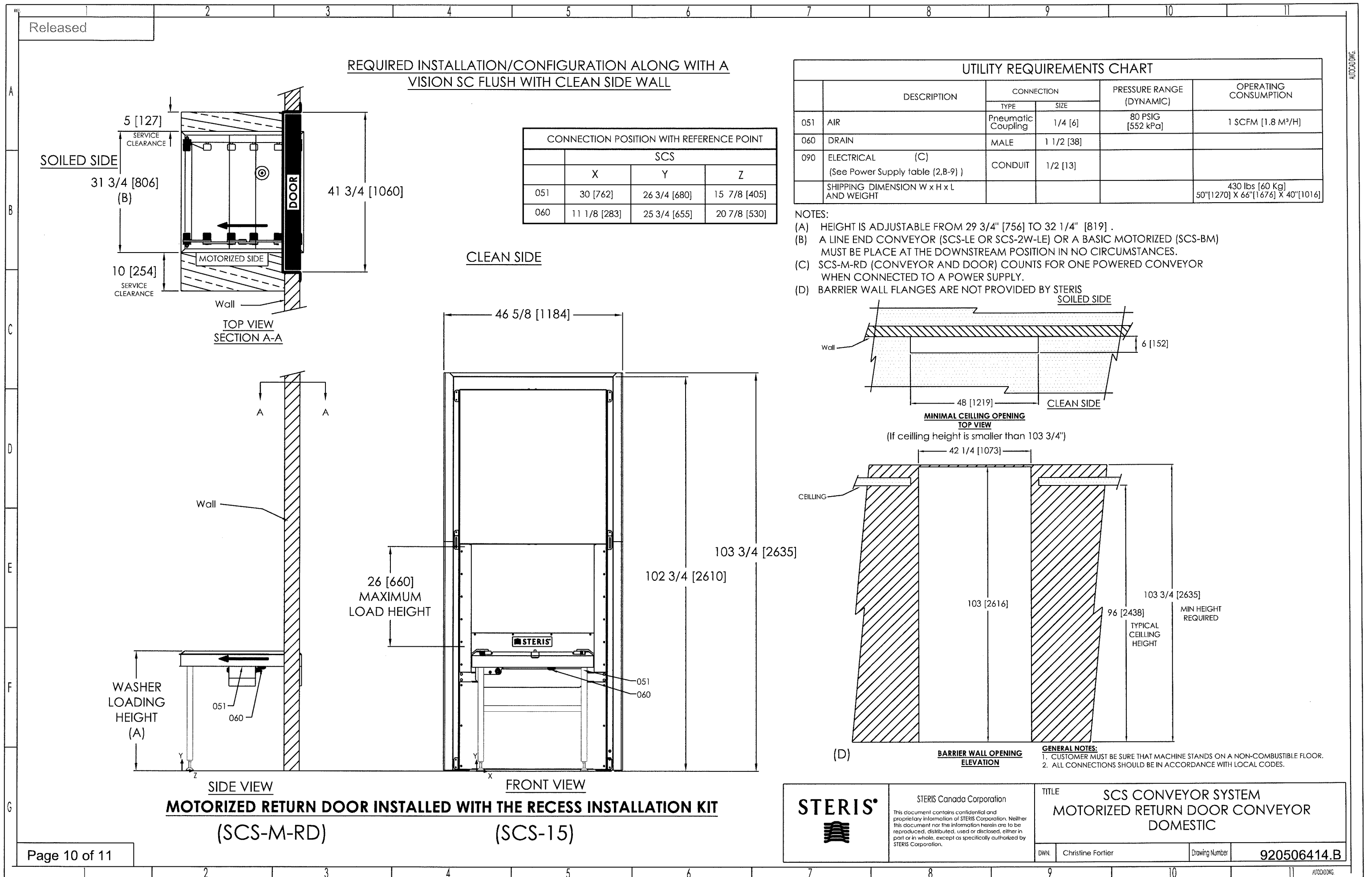
(B) REFER TO WASHER'S EQUIPMENT DRAWING FOR DIMENSION DETAILS.

(C) FOR AMSCO 3052 / 5052 / VISION SC, KITS ARE SCS-L-012, SCS-L-014, SCS-L-016, SCS-L-018.  
FOR 444/450/SYNERGY/GENFORE, KITS ARE SCS-L-011, SCS-L-013, SCS-015, SCS-L-017.

<b>STERIS</b> 	STERIS Canada Corporation <small>This document contains confidential and proprietary information of STERIS Corporation. Neither this document nor the information herein are to be reproduced, distributed, used or disclosed, either in part or in whole, except as specifically authorized by STERIS Corporation.</small>	TITLE <b>SCS CONVEYOR SYSTEM LOAD/UNLOAD CONVEYORS DOMESTIC</b>	
	DWN. Christine Fortier	Drawing Number	<b>920506414.B</b>







Signature History Record			
Signature	Role	Vote	Event Date
Mario Grondin	Author	Submit	2013-09-23 12:16:28 EDT
Maxime Metivier	Approver	Approved	2013-09-23 13:39:20 EDT