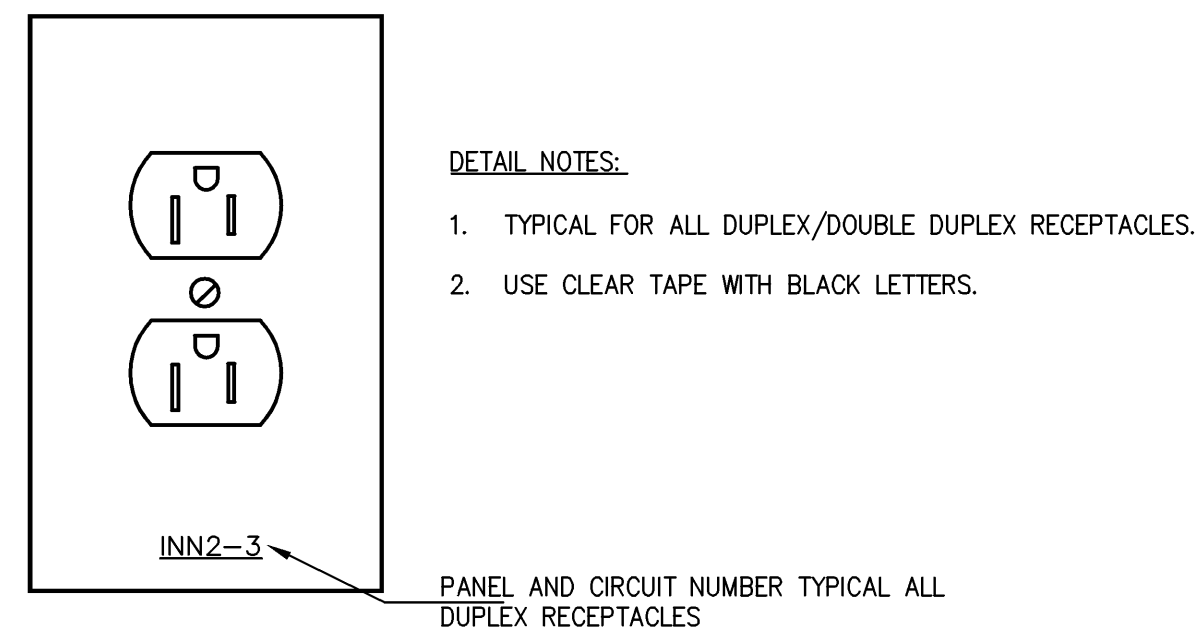
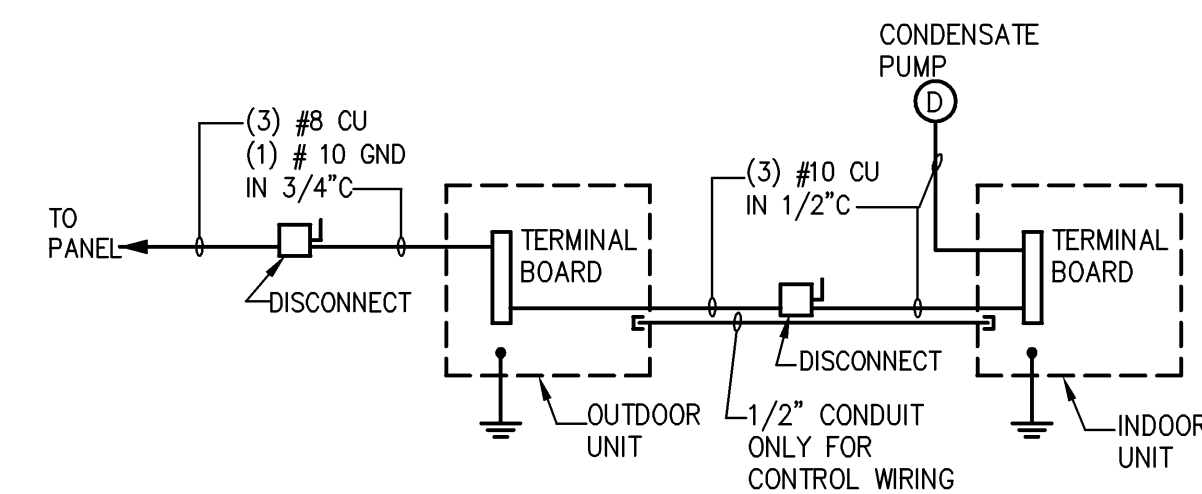


**1 TRENCHING DETAIL - SECONDARY FEEDER**  
PRIMARY FEEDERS - SIMILAR

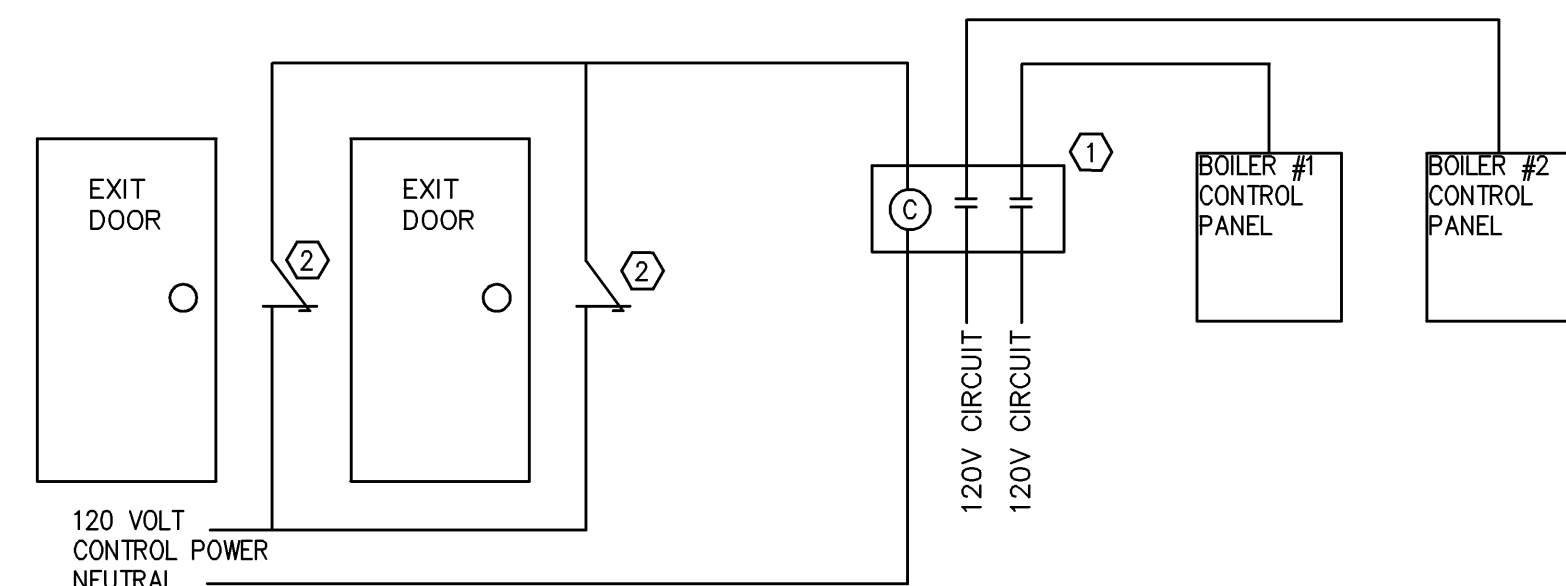
- NO SCALE DETAIL 1 NOTES:
- SEE SPECIFICATION FOR TRENCH AND BACKFILL REQUIREMENTS. RETURN SURFACE TO EXISTING CONDITION. WHERE RUN UNDER PAVING, REPAVE TO MATCH SURROUNDINGS.
  - BACKFILL WITH ORIGINAL NATIVE SOIL.
  - PROVIDE 3" CONCRETE TOP COVER AND 3" SIDE COVER FOR DUCTS, TYPICAL.
  - LAY IN PLASTIC INDICATOR STRIP, 12" BELOW GRADE. 3" RED, NON DETECTABLE, WORDING: "CAUTION BURIED ELECTRIC LINE" BLACK LETTERING. ACCEPTABLE MANUFACTURERS: BRADY, PANDUIT.
  - PROVIDE MINIMUM 12 INCHES SPACE BETWEEN POWER AND GAS LINE.



**4 DEVICE PLATE DETAIL**

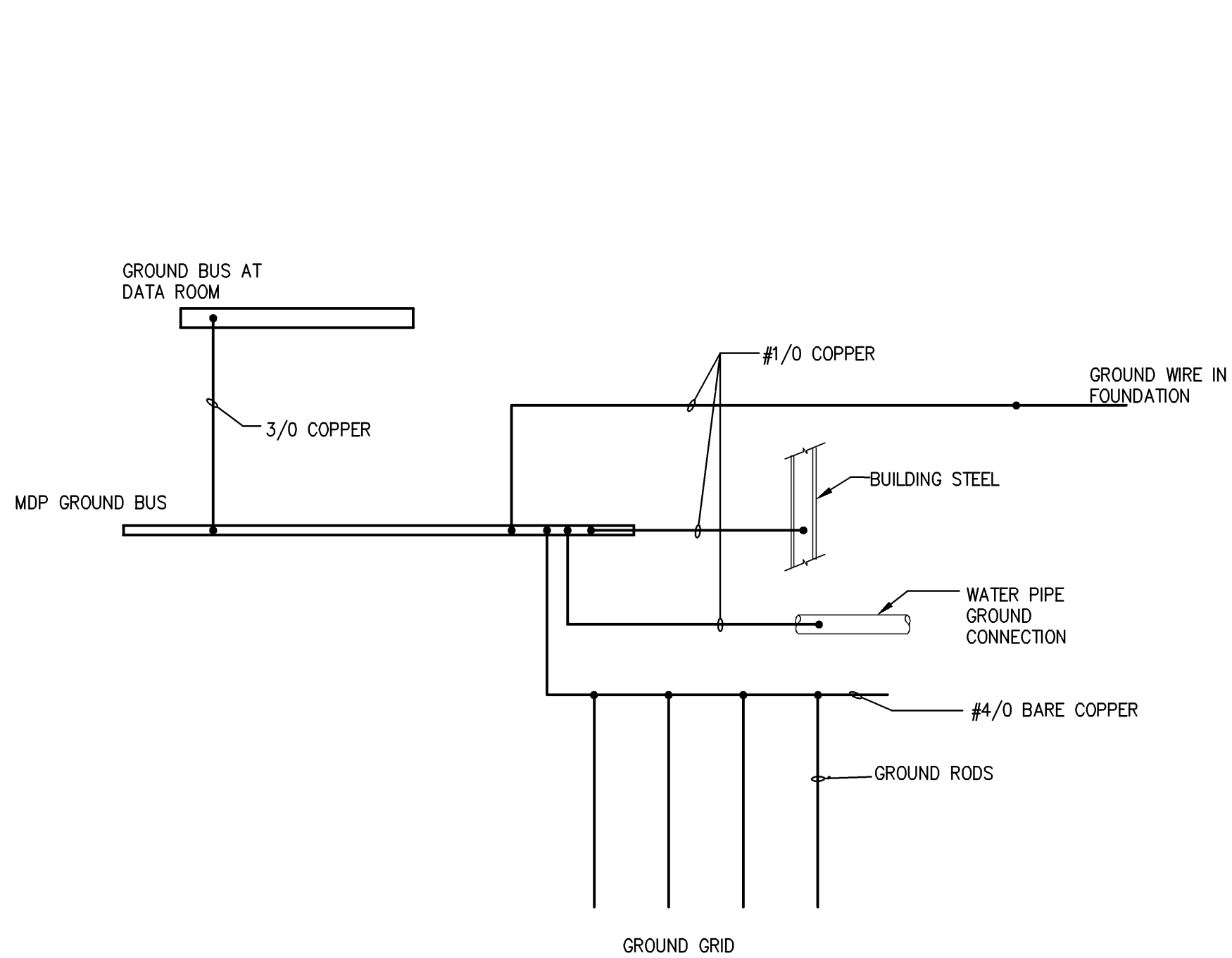


**2 AC TYPICAL WIRING SCHEMATIC**

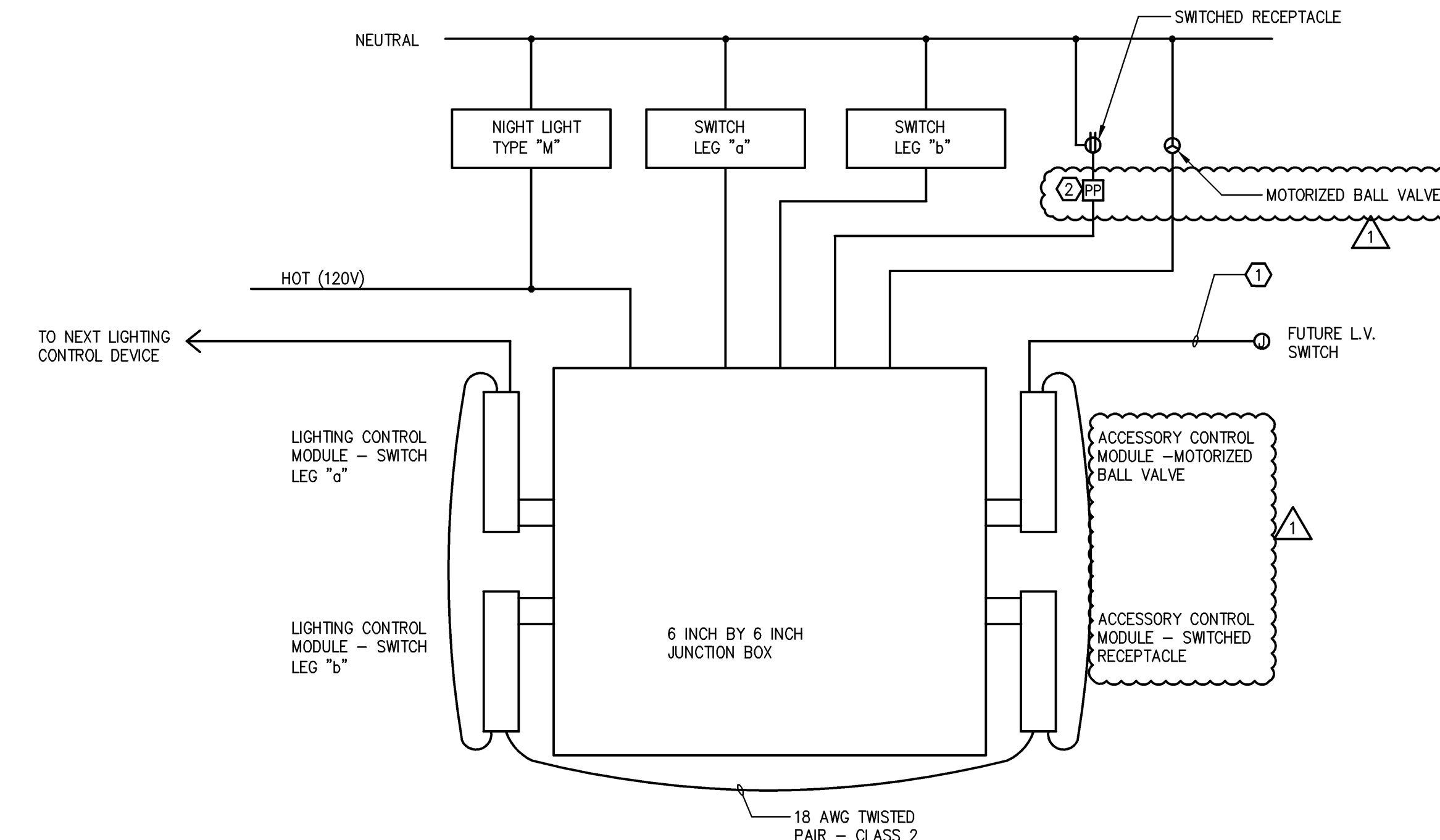


**5 EMERGENCY BOILER SHUTDOWN CONTROL DIAGRAM**

- EMERGENCY BOILER SHUTDOWN CONTROL DIAGRAM NOTES:
- PROVIDE RELAY AT BOILER CONTROL PANEL TO REMOVE POWER TO BOILERS. RELAY SHALL BE ELECTRICALLY HELD. NUMBER OF POLES IN RELAY SHALL MATCH OR EXCEED NUMBER OF PHASE CONDUCTORS PROVIDING POWER TO THE BOILER CONTROL PANELS. SQUARE D CONTACTOR L SERIES OR APPROVED.
  - PROVIDE PUSH PULL STATION AT EACH BOILER ROOM DOOR FOR SHUTDOWN OF BOILERS. PULL STATION SHALL BE LOCATED JUST OUTSIDE THE BOILER ROOM DOOR(S). IF THE BOILER ROOM DOOR IS ON THE BUILDING EXTERIOR, THE SWITCH SHALL BE LOCATED JUST INSIDE THE DOOR. PUSH PULL STATION SHALL CONTAIN AT LEAST ONE NORMALLY CLOSED SET OF CONTACTS. SQUARE D ZB5AX4 SERIES OR APPROVED.

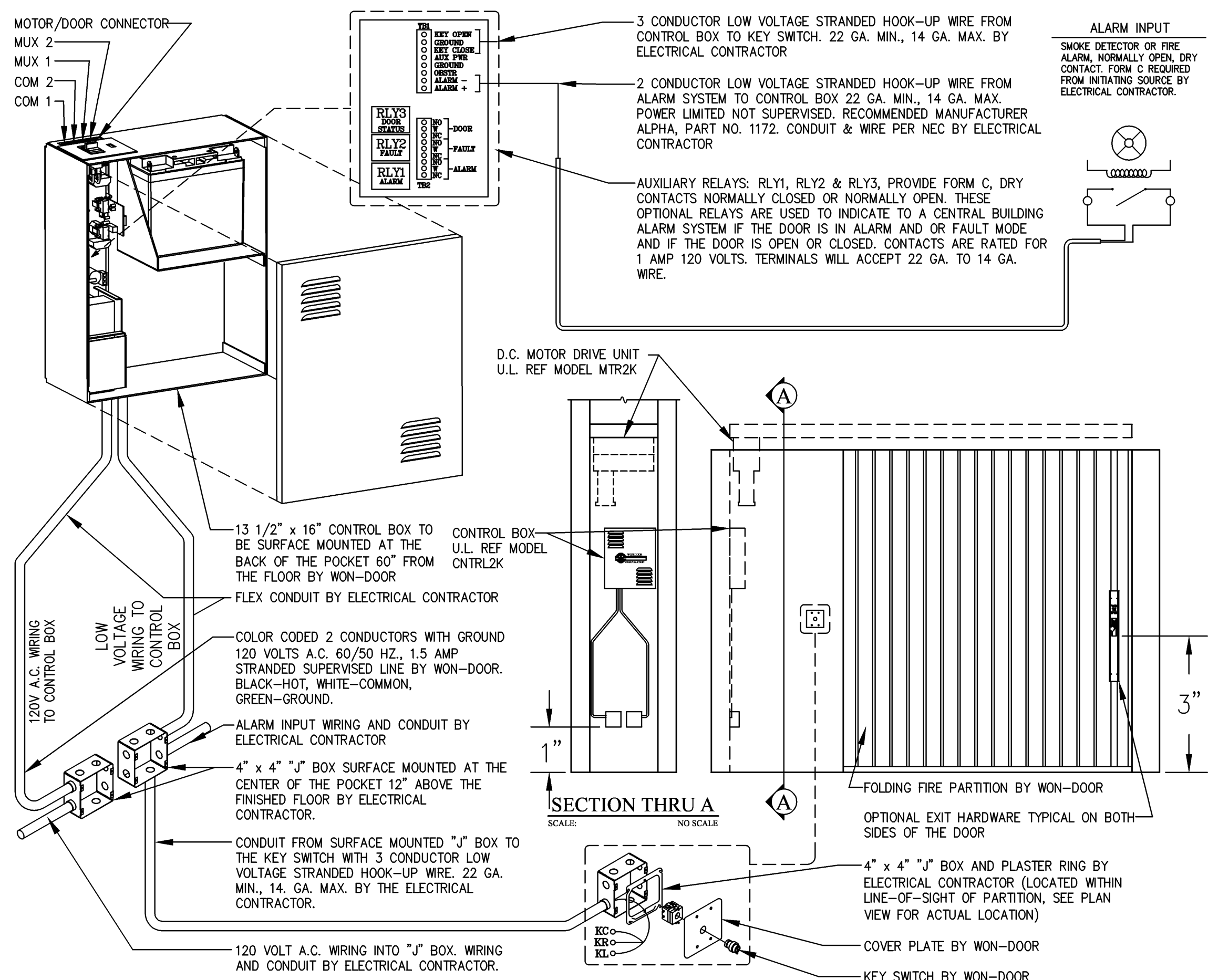


**7 GROUNDING DETAIL**

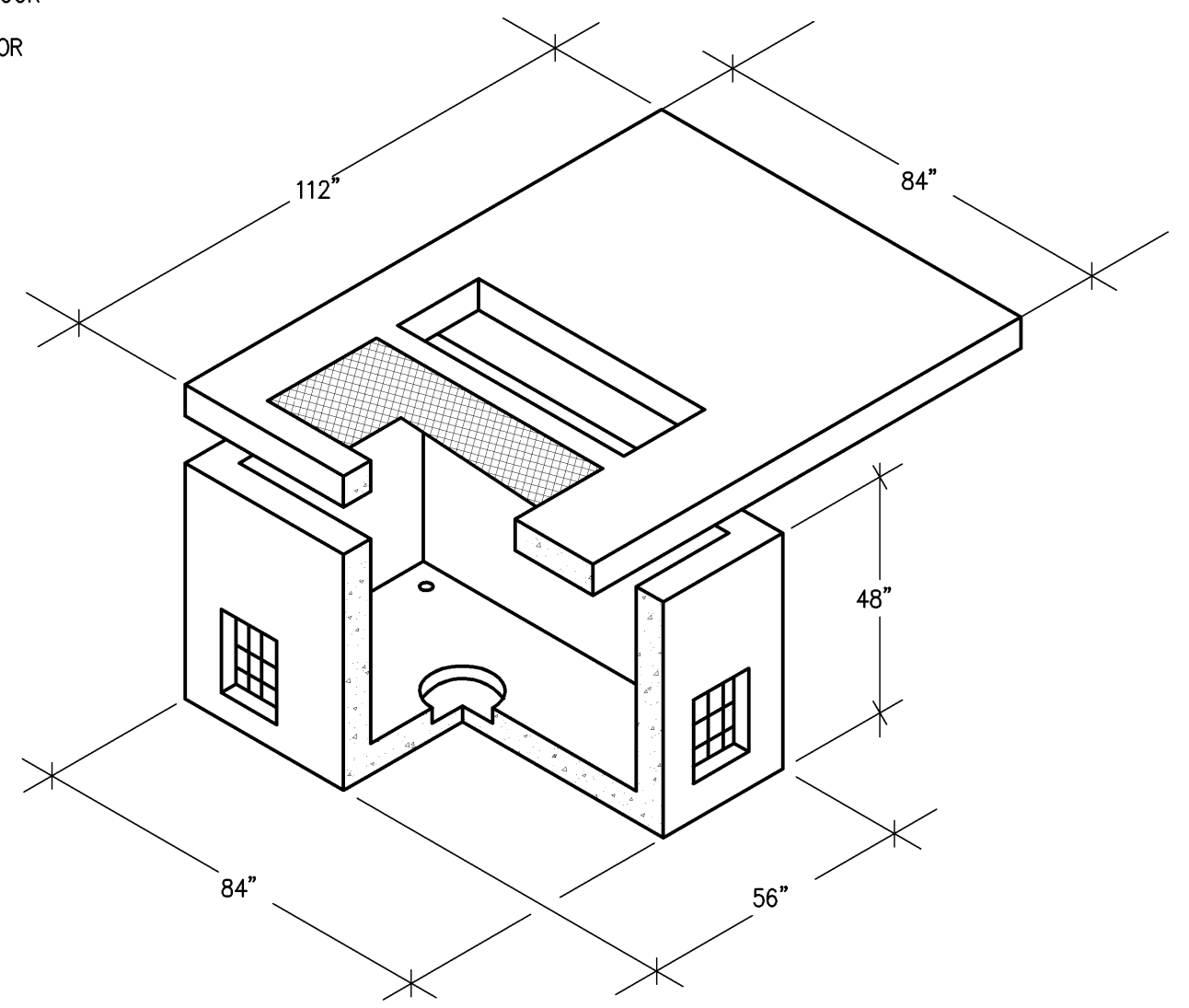


**8 PATIENT ROOM RELAY PANEL - WIRING DIAGRAM**

- DETAIL 2 NOTES:
- PROVIDE 18 AWG TWISTED PAIR TO EMPTY JUNCTION FOR INSTALLATION OF FUTURE LOW VOLTAGE SWITCH.
  - PROVIDE POWER PACK IN CONJUNCTION WITH ACCESSORY CONTROL MODULE TO ALLOW SWITCHING OF 20 AMP CIRCUIT SERVING RECEPTACLE.



**6 WON-DOOR DETAIL**



**9 TRANSFORMER/SECTIONALIZING PAD VAULT WITH ACCESS**

<p>ADDENDUM 1</p> <p>Revisions:</p> <p>10 AUG 2012</p> <p>Date</p>	<p><b>CONSULTANTS:</b></p> <p><b>BALZHISER &amp; HUBBARD</b></p> <p>ENGINEERS 2100-031-10es-105.dwg</p>	<p><b>ARCHITECT/ENGINEERS:</b></p> <p><b>Tina Ely architect</b></p> <p>2915 Wingate Street / Eugene, OR 97408</p> <p>541.521.2477 / Tina.Ely@comcast.net</p>	<p>Drawing Title</p> <p><b>ELECTRICAL DETAILS</b></p> <p>Approved: Project Director</p>	<p>Project Title</p> <p><b>SEISMIC REPLACEMENT BLDG 2</b></p> <p><b>PHASE 1 MINOR</b></p> <p><b>ACUTE PSYCHIATRIC WARD</b></p> <p>Location</p> <p><b>ROSEBURG, OREGON</b></p> <p>Date</p> <p><b>30 APR 2012</b></p>	<p>VA Project Number</p> <p><b>653-322</b></p> <p>Building Number</p> <p><b>086</b></p> <p>Sheet Number</p> <p><b>ES-105</b></p>	<p>Office of Construction and Facilities Management</p> <p>Department of Veterans Affairs</p>
--	---	--	---	---	--	---