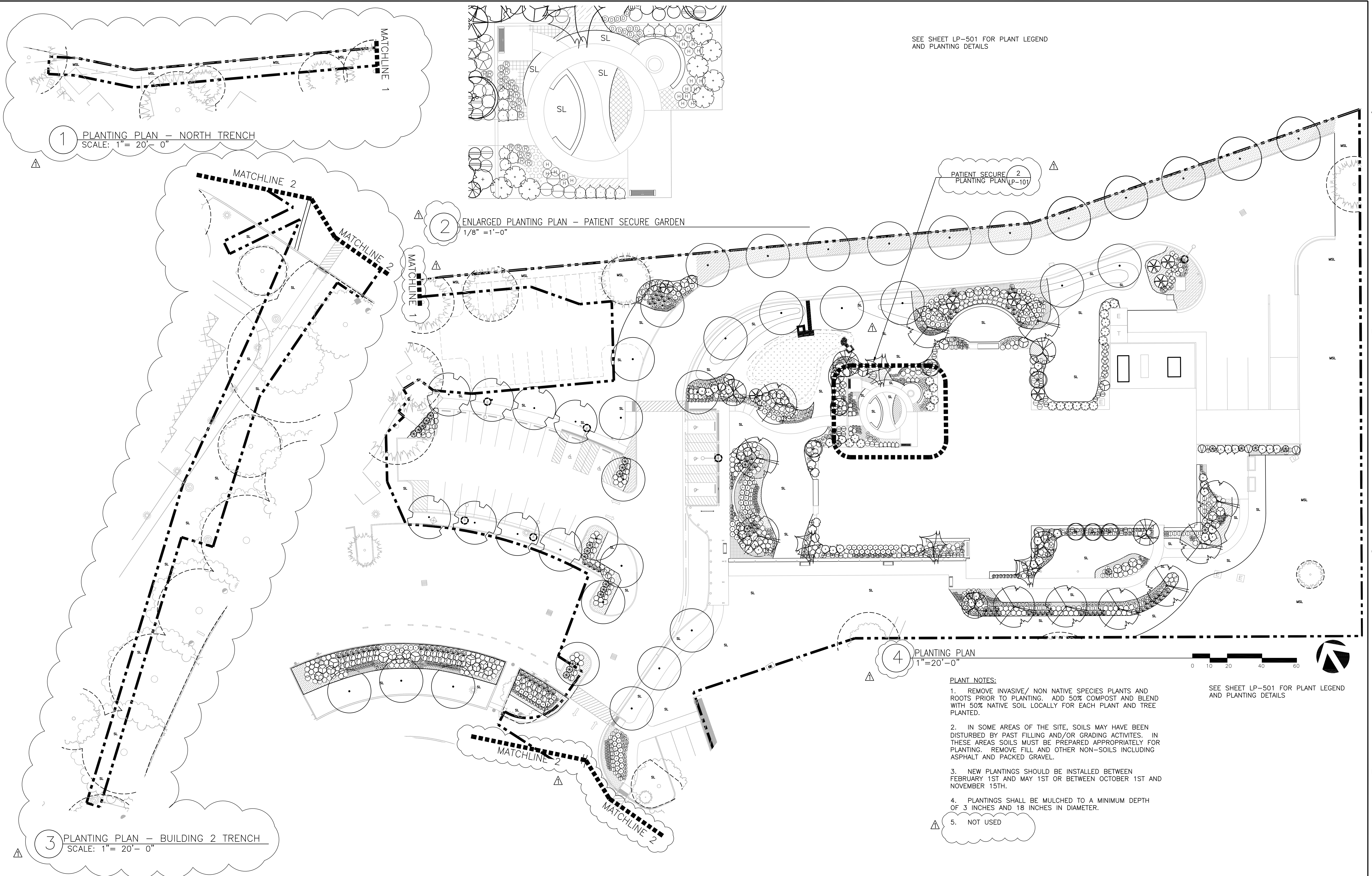


three inches = one foot  
one and one half inches = one foot  
one inch = one foot  
three quarters inch = one foot  
one half inch = one foot  
three eighths inch = one foot  
one quarter inch = one foot  
one eighth inch = one foot



Revisions	Date	CONSULTANT	STAMP	ARCHITECT	Drawing Title	Project Title	VA Project Number	Office of Construction and Facilities Management
					LANDSCAPE PLANTING PLAN	SEISMIC REPLACEMENT BLDG 2 PHASE 1 MINOR ACUTE PSYCHIATRIC WARD	653-322	
					Approved: Project Director	Location	Building Number	
						ROSEBURG, OREGON	086	
						Date	Sheet Number	
						30 APR 2012	LP-101	
						Checked	Drawn	
						LMB	LMB	
ADDENDUM #1	08/10/2012							