



EXTERIOR CAMERAS

CAMERA 1- Pelco Sarix SMP external cameras

CAMERA 2- Pelco Sarix SMP external cameras

CAMERA 3- Pelco Sarix SMP external cameras

CAMERA 4- Pelco Sarix SMP external cameras

CAMERA 5- Pelco Sarix SMP external cameras

CAMERA 6 - Pelco Sarix SMP external cameras

CAMERA 7 - Pelco Sarix SMP external cameras

NOTES:
1. SEE SPECIFICATIONS FOR CONTACTOR TYPE

NOTES:
1. SEE SPECIFICATIONS FOR CONTACTOR TYPE

CIRCUIT NUMBER	TRIP	BRK/AGE	POLES	EQUIPMENT SERVED	WVA	WBE	DESCRIPTION	CONDUIT	REMARKS
1	200	3	SPACE		1000				
2	625	600	3	SP-1	450	4-150	WHL	2/0	2 SECS
3	100	3	LP1		170	1/0		2	
4	100	3	LP1		170	1/0		2	
5	125	125	3	RPT, RPT, RPT TRANSFORMER	60	1/0		2	
6	125	125	3	RPT, RPT, RPT TRANSFORMER	130	1/0		2	
7	125	125	3	RPT, RPT, RPT TRANSFORMER	100	1/0		2	
8	600	600	3	ATS #1 NORMAL FEED	318	2-SECS	1500 KWH	1/0	
9	150	150	3	ATS #1 NORMAL FEED	170	1/0		2	
10	60	100	3	ATS #2 NORMAL FEED	170	1/0		2	NOTE 4
11	200	200	3	SP-1	170	1/0		2	
12	200	200	3	SP-1	170	1/0		2	NOTE 3
13	200	200	3	SP-1	170	1/0		2	
14	100	3	SPACE						

CONNECTED WVA: 1,393
DEMAND WVA: 829

CONNECTED AMPS: 1,875
DEMAND AMPS: 921

- NOTES:
1. PROVIDE MINIMUM AMPERES INTERRUPTING CAPACITY (AIC) AND BUS BRACING: 35000 AMPERES.
 2. CHARACTERISTICS:
WVA: 480
HETZ: 60
PHASE: 3
WBE: 12000 WITH GEL PROTECTION
 3. PROPER PHASING MUST BE CHECKED PRIOR TO MOBILE OPERATION. USE ON BOARD PHASE INDICATOR IN MAIN PANEL.
 4. BREAKER SHALL HAVE PROVISIONS FOR LOCKOUT IN THE OPEN POSITION.

DISTRIBUTION PANEL DP SCHEDULE									
CIRCUIT NUMBER	TRIP	BRK/AGE	POLES	EQUIPMENT SERVED	WVA	WBE	DESCRIPTION	CONDUIT	REMARKS
1	125	125	3	SP-1	170	1/0		2	
2	125	125	3	SP-1	170	1/0		2	
3	125	125	3	SP-1	170	1/0		2	
4	125	125	3	SP-1	170	1/0		2	
5	125	125	3	SP-1	170	1/0		2	
6	125	125	3	SP-1	170	1/0		2	
7	125	125	3	SP-1	170	1/0		2	
8	125	125	3	SP-1	170	1/0		2	
9	125	125	3	SP-1	170	1/0		2	
10	125	125	3	SP-1	170	1/0		2	
11	125	125	3	SP-1	170	1/0		2	
12	125	125	3	SP-1	170	1/0		2	
13	125	125	3	SP-1	170	1/0		2	
14	125	125	3	SP-1	170	1/0		2	
15	125	125	3	SP-1	170	1/0		2	
16	125	125	3	SP-1	170	1/0		2	
17	125	125	3	SP-1	170	1/0		2	
18	125	125	3	SP-1	170	1/0		2	
19	125	125	3	SP-1	170	1/0		2	
20	125	125	3	SP-1	170	1/0		2	
21	125	125	3	SP-1	170	1/0		2	
22	125	125	3	SP-1	170	1/0		2	
23	125	125	3	SP-1	170	1/0		2	
24	125	125	3	SP-1	170	1/0		2	
25	125	125	3	SP-1	170	1/0		2	
26	125	125	3	SP-1	170	1/0		2	
27	125	125	3	SP-1	170	1/0		2	
28	125	125	3	SP-1	170	1/0		2	
29	125	125	3	SP-1	170	1/0		2	
30	125	125	3	SP-1	170	1/0		2	
31	125	125	3	SP-1	170	1/0		2	
32	125	125	3	SP-1	170	1/0		2	
33	125	125	3	SP-1	170	1/0		2	
34	125	125	3	SP-1	170	1/0		2	
35	125	125	3	SP-1	170	1/0		2	
36	125	125	3	SP-1	170	1/0		2	
37	125	125	3	SP-1	170	1/0		2	
38	125	125	3	SP-1	170	1/0		2	
39	125	125	3	SP-1	170	1/0		2	
40	125	125	3	SP-1	170	1/0		2	
41	125	125	3	SP-1	170	1/0		2	
42	125	125	3	SP-1	170	1/0		2	
43	125	125	3	SP-1	170	1/0		2	
44	125	125	3	SP-1	170	1/0		2	
45	125	125	3	SP-1	170	1/0		2	
46	125	125	3	SP-1	170	1/0		2	
47	125	125	3	SP-1	170	1/0		2	
48	125	125	3	SP-1	170	1/0		2	
49	125	125	3	SP-1	170	1/0		2	
50	125	125	3	SP-1	170	1/0		2	
51	125	125	3	SP-1	170	1/0		2	
52	125	125	3	SP-1	170	1/0		2	
53	125	125	3	SP-1	170	1/0		2	
54	125	125	3	SP-1	170	1/0		2	
55	125	125	3	SP-1	170	1/0		2	
56	125	125	3	SP-1	170	1/0		2	
57	125	125	3	SP-1	170	1/0		2	
58	125	125	3	SP-1	170	1/0		2	
59	125	125	3	SP-1	170	1/0		2	
60	125	125	3	SP-1	170	1/0		2	
61	125	125	3	SP-1	170	1/0		2	
62	125	125	3	SP-1	170	1/0		2	
63	125	125	3	SP-1	170	1/0		2	
64	125	125	3	SP-1	170	1/0		2	
65	125	125	3	SP-1	170	1/0		2	
66	125	125	3	SP-1	170	1/0		2	
67	125	125	3	SP-1	170	1/0		2	
68	125	125	3	SP-1	170	1/0		2	
69	125	125	3	SP-1	170	1/0		2	
70	125	125	3	SP-1	170	1/0		2	
71	125	125	3	SP-1	170	1/0		2	
72	125	125	3	SP-1	170	1/0		2	
73	125	125	3	SP-1	170	1/0		2	
74	125	125	3	SP-1	170	1/0		2	
75	125	125	3	SP-1	170	1/0		2	
76	125	125	3	SP-1	170	1/0		2	
77	125	125	3	SP-1	170	1/0		2	
78	125	125	3	SP-1	170	1/0		2	
79	125	125	3	SP-1	170	1/0		2	
80	125	125	3	SP-1	170	1/0		2	
81	125	125	3	SP-1	170	1/0		2	
82	125	125	3	SP-1	170	1/0		2	
83	125	125	3	SP-1	170	1/0		2	
84	125	125	3	SP-1	170	1/0		2	
85	125	125	3	SP-1	170	1/0		2	
86	125	125	3	SP-1	170	1/0		2	
87	125	125	3	SP-1	170	1/0		2	
88	125	125	3	SP-1	170	1/0		2	
89	125	125	3	SP-1	170	1/0		2	
90	125	125	3	SP-1	170	1/0		2	
91	125	125	3	SP-1	170	1/0		2	
92	125	125	3	SP-1	170	1/0		2	
93	125	125	3	SP-1	170	1/0		2	
94	125	125	3	SP-1	170	1/0		2	
95	125	125	3	SP-1	170	1/0		2	
96	125	125	3	SP-1	170	1/0		2	
97	125	125	3	SP-1	170	1/0		2	
98	125	125	3	SP-1	170	1/0		2	
99	125	125	3	SP-1	170	1/0		2	
100	125	125	3	SP-1	170	1/0		2	
101	125	125	3	SP-1	170	1/0		2	
102	125	125	3	SP-1	170	1/0		2	
103	125	125	3	SP-1	170	1/0		2	
104	125	125	3	SP-1	170	1/0		2	
105	125	125	3	SP-1	170	1/0		2	
106	125	125	3	SP-1	170	1/0		2	
107	125	125	3	SP-1	170	1/0		2	
108	125	125	3	SP-1	170	1/0		2	
109	125	125	3	SP-1	170	1/0		2	
110	125	125	3	SP-1	170	1/0		2	
111	125	125	3	SP-1	170	1/0		2	
112	125	125	3	SP-1	170	1/0		2	
113	125	125	3	SP-1	170	1/0		2	
114	125	125	3	SP-1	170	1/0		2	
115	125	125	3	SP-1	170	1/0		2	
116	125	125	3	SP-1	170	1/0		2	
117	125	125	3	SP-1	170	1/0		2	
118	125	125	3	SP-1	170	1/0		2	
119	125	125	3	SP-1	170	1/0		2	
120	125	125	3	SP-1	170	1/0		2	
121	125	125	3	SP-1	170	1/0		2	
122	125	125	3	SP-1	170	1/0		2	
123	125	125	3	SP-1	170	1/0		2	
124	125	125	3	SP-1	170	1/0		2	
125	125	125	3	SP-1	170	1/0		2	
126	125	125	3	SP-1	170	1/0		2	
127	125	125	3	SP-1	170	1/0		2	
128	125	125	3	SP-1	170	1/0		2	
129	125	125	3	SP-1	170	1/0		2	
130	125	125	3	SP-1	170	1/0		2	
131	125	125	3	SP-1	170	1/0		2	
132	125	125	3	SP-1	170	1/0		2	
133	125	125	3	SP-1	170	1/0		2	
134	125	125	3	SP-1	170	1/0		2	
135	125	125	3	SP-1	170	1/0		2	
136	125	125	3	SP-1	170	1/0		2	
137	125	125	3	SP-1	170	1/0		2	
138	125	125	3	SP-1	170	1/0		2	
139	125	125	3	SP-1	170	1/0		2	
140	125	125	3	SP-1	170	1/0		2	
141	125	125	3	SP-1	170	1/0		2	
142	125	125	3	SP-1	170	1/0		2	
143	125	125	3	SP-1	170	1/0		2	
144	125	125	3	SP-1	170	1/0		2	
145	125	125	3	SP-1	170	1/0		2	
146	125	125	3	SP-1	170	1/0		2	
147	125	125	3	SP-1	170	1/0		2	
148	125	125	3	SP-1	170	1/0		2	
149	125	125	3	SP-1	170	1/0		2	
150	125	125	3	SP-1	170	1/0		2	
151	125	125	3	SP-1	170	1/0		2	
152	125	125	3	SP-1	170	1/0		2	
153	125	125	3	SP-1	170	1/0		2	
154	125	125	3	SP-1	170	1/0		2	
155	125	125	3	SP-1	170	1/0		2	
156	125	125	3	SP-1	170	1/0		2	
157	125	125	3	SP-1	170	1/0		2	
158	125	125	3	SP-1	170	1/0		2	
159	125	125	3	SP-1	170	1/0		2	
160	125	125	3	SP-1	170	1/0		2	
161	125	125	3	SP-1	170	1/0		2	
162	125	125	3	SP-1	170	1/0		2	
163	125	125	3	SP-1	170	1/0		2	
164	125	125	3	SP-1	170	1/0		2	
165	125	125	3	SP-1	170	1/0		2	
166	125	125	3	SP-1	170	1/0		2	
167	125	125	3	SP-1	170	1/0		2	
168	125	125	3	SP-1	170	1/0		2	
169	125	125	3	SP-1	170	1/0		2	
170	125	125	3	SP-1	170	1/0		2	
171	125	125	3	SP-1	170	1/0		2	
172	125	125	3	SP-1	170	1/0		2	
1									

[illegible]

TABLE 201										PAGE 201	
VOLUME 2002-2022										PAGE 202	
PAGES 1 A B C D E										PAGE 203	
CONTRACTED WORK	W/L	CON	CON	A	B	C	CON	CON	W/L	CONTRACTED WORK	W/L
CONTRACTED WORK	1.4	20/1	1	1.4					20/1	CONTRACTED WORK	20/1
CONTRACTED WORK	1.4	20/1	2		1.8				20/1	CONTRACTED WORK	20/1
CONTRACTED WORK	1.4	20/1	3						20/1	CONTRACTED WORK	20/1
CONTRACTED WORK	1.4	20/1	4						20/1	CONTRACTED WORK	20/1
CONTRACTED WORK	1.4	20/1	5						20/1	CONTRACTED WORK	20/1
CONTRACTED WORK	1.4	20/1	6						20/1	CONTRACTED WORK	20/1
CONTRACTED WORK	1.4	20/1	7	1.0					20/1	CONTRACTED WORK	20/1
CONTRACTED WORK	1.4	20/1	8		1.2				20/1	CONTRACTED WORK	20/1
CONTRACTED WORK	1.4	20/1	9			1.2			20/1	CONTRACTED WORK	20/1
CONTRACTED WORK	1.4	20/1	10				1.0		20/1	CONTRACTED WORK	20/1
CONTRACTED WORK	1.4	20/1	11					1.0	20/1	CONTRACTED WORK	20/1
CONTRACTED WORK	1.4	20/1	12						20/1	CONTRACTED WORK	20/1
CONTRACTED WORK	1.4	20/1	13	0.8					20/1	CONTRACTED WORK	20/1
CONTRACTED WORK	1.4	20/1	14		0.8				20/1	CONTRACTED WORK	20/1
CONTRACTED WORK	1.4	20/1	15			1.2			20/1	CONTRACTED WORK	20/1
CONTRACTED WORK	1.4	20/1	16				1.8		20/1	CONTRACTED WORK	20/1
CONTRACTED WORK	1.4	20/1	17					1.0	20/1	CONTRACTED WORK	20/1
CONTRACTED WORK	1.4	20/1	18						20/1	CONTRACTED WORK	20/1
CONTRACTED WORK	1.4	20/1	19	0.8					20/1	CONTRACTED WORK	20/1
CONTRACTED WORK	1.4	20/1	20					0.8	20/1	CONTRACTED WORK	20/1
CONTRACTED WORK	1.4	20/1	21						20/1	CONTRACTED WORK	20/1
CONTRACTED WORK	1.4	20/1	22						20/1	CONTRACTED WORK	20/1
CONTRACTED WORK	1.4	20/1	23						20/1	CONTRACTED WORK	20/1
CONTRACTED WORK	1.4	20/1	24						20/1	CONTRACTED WORK	20/1
CONTRACTED WORK	1.4	20/1	25						20/1	CONTRACTED WORK	20/1
CONTRACTED WORK	1.4	20/1	26						20/1	CONTRACTED WORK	20/1
CONTRACTED WORK	1.4	20/1	27						20/1	CONTRACTED WORK	20/1
CONTRACTED WORK	1.4	20/1	28						20/1	CONTRACTED WORK	20/1
CONTRACTED WORK	1.4	20/1	29						20/1	CONTRACTED WORK	20/1
CONTRACTED WORK	1.4	20/1	30						20/1	CONTRACTED WORK	20/1
CONTRACTED WORK	1.4	20/1	31						20/1	CONTRACTED WORK	20/1
CONTRACTED WORK	1.4	20/1	32						20/1	CONTRACTED WORK	20/1
CONTRACTED WORK	1.4	20/1	33						20/1	CONTRACTED WORK	20/1
CONTRACTED WORK	1.4	20/1	34						20/1	CONTRACTED WORK	20/1
CONTRACTED WORK	1.4	20/1	35						20/1	CONTRACTED WORK	20/1
CONTRACTED WORK	1.4	20/1	36						20/1	CONTRACTED WORK	20/1
CONTRACTED WORK	1.4	20/1	37						20/1	CONTRACTED WORK	20/1
CONTRACTED WORK	1.4	20/1	38						20/1	CONTRACTED WORK	20/1
CONTRACTED WORK	1.4	20/1	39						20/1	CONTRACTED WORK	20/1
CONTRACTED WORK	1.4	20/1	40						20/1	CONTRACTED WORK	20/1
CONTRACTED WORK	1.4	20/1	41						20/1	CONTRACTED WORK	20/1
CONTRACTED WORK	1.4	20/1	42						20/1	CONTRACTED WORK	20/1
CONTRACTED WORK	1.4	20/1	43						20/1	CONTRACTED WORK	20/1
CONTRACTED WORK	1.4	20/1	44						20/1	CONTRACTED WORK	20/1
CONTRACTED WORK	1.4	20/1	45						20/1	CONTRACTED WORK	20/1
CONTRACTED WORK	1.4	20/1	46						20/1	CONTRACTED WORK	20/1
CONTRACTED WORK	1.4	20/1	47						20/1	CONTRACTED WORK	20/1
CONTRACTED WORK	1.4	20/1	48						20/1	CONTRACTED WORK	20/1
CONTRACTED WORK	1.4	20/1	49						20/1	CONTRACTED WORK	20/1
CONTRACTED WORK	1.4	20/1	50						20/1	CONTRACTED WORK	20/1
CONTRACTED WORK	1.4	20/1	51						20/1	CONTRACTED WORK	20/1
CONTRACTED WORK	1.4	20/1	52						20/1	CONTRACTED WORK	20/1
CONTRACTED WORK	1.4	20/1	53						20/1	CONTRACTED WORK	20/1
CONTRACTED WORK	1.4	20/1	54						20/1	CONTRACTED WORK	20/1
CONTRACTED WORK	1.4	20/1	55						20/1	CONTRACTED WORK	20/1
CONTRACTED WORK	1.4	20/1	56						20/1	CONTRACTED WORK	20/1
CONTRACTED WORK	1.4	20/1	57						20/1	CONTRACTED WORK	20/1
CONTRACTED WORK	1.4	20/1	58						20/1	CONTRACTED WORK	20/1
CONTRACTED WORK	1.4	20/1	59						20/1	CONTRACTED WORK	20/1
CONTRACTED WORK	1.4	20/1	60						20/1	CONTRACTED WORK	20/1
CONTRACTED WORK	1.4	20/1	61						20/1	CONTRACTED WORK	20/1
CONTRACTED WORK	1.4	20/1	62						20/1	CONTRACTED WORK	20/1
CONTRACTED WORK	1.4	20/1	63						20/1	CONTRACTED WORK	20/1
CONTRACTED WORK	1.4	20/1	64						20/1	CONTRACTED WORK	20/1
CONTRACTED WORK	1.4	20/1	65						20/1	CONTRACTED WORK	20/1
CONTRACTED WORK	1.4	20/1	66						20/1	CONTRACTED WORK	20/1
CONTRACTED WORK	1.4	20/1	67						20/1	CONTRACTED WORK	20/1
CONTRACTED WORK	1.4	20/1	68						20/1	CONTRACTED WORK	20/1
CONTRACTED WORK	1.4	20/1	69						20/1	CONTRACTED WORK	20/1
CONTRACTED WORK	1.4	20/1	70						20/1	CONTRACTED WORK	20/1
CONTRACTED WORK	1.4	20/1	71						20/1	CONTRACTED WORK	20/1
CONTRACTED WORK	1.4	20/1	72						20/1	CONTRACTED WORK	20/1
CONTRACTED WORK	1.4	20/1	73						20/1	CONTRACTED WORK	20/1
CONTRACTED WORK	1.4	20/1	74						20/1	CONTRACTED WORK	20/1
CONTRACTED WORK	1.4	20/1	75						20/1	CONTRACTED WORK	20/1
CONTRACTED WORK	1.4	20/1	76						20/1	CONTRACTED WORK	20/1
CONTRACTED WORK	1.4	20/1	77						20/1	CONTRACTED WORK	20/1
CONTRACTED WORK	1.4	20/1	78						20/1	CONTRACTED WORK	20/1
CONTRACTED WORK	1.4	20/1	79						20/1	CONTRACTED WORK	20/1
CONTRACTED WORK	1.4	20/1	80						20/1	CONTRACTED WORK	20/1
CONTRACTED WORK	1.4	20/1	81						20/1	CONTRACTED WORK	20/1
CONTRACTED WORK	1.4	20/1	82						20/1	CONTRACTED WORK	20/1
CONTRACTED WORK	1.4	20/1	83						20/1	CONTRACTED WORK	20/1
CONTRACTED WORK	1.4	20/1	84						20/1	CONTRACTED WORK	20/1
CONTRACTED WORK	1.4	20/1	85						20/1	CONTRACTED WORK	20/1
CONTRACTED WORK	1.4	20/1	86						20/1	CONTRACTED WORK	20/1
CONTRACTED WORK	1.4	20/1	87						20/1	CONTRACTED WORK	20/1
CONTRACTED WORK	1.4	20/1	88						20/1	CONTRACTED WORK	20/1
CONTRACTED WORK	1.4	20/1	89						20/1	CONTRACTED WORK	20/1
CONTRACTED WORK	1.4	20/1	90						20/1	CONTRACTED WORK	20/1
CONTRACTED WORK	1.4	20/1	91						20/1	CONTRACTED WORK	20/1
CONTRACTED WORK	1.4	20/1	92						20/1	CONTRACTED WORK	20/1
CONTRACTED WORK	1.4	20/1	93						20/1	CONTRACTED WORK	20/1
CONTRACTED WORK	1.4	20/1	94						20/1	CONTRACTED WORK	20/1
CONTRACTED WORK	1.4	20/1	95						20/1	CONTRACTED WORK	20/1
CONTRACTED WORK	1.4	20/1	96						20/1	CONTRACTED WORK	20/1
CONTRACTED WORK	1.4	20/1	97						20/1	CONTRACTED WORK	20/1
CONTRACTED WORK	1.4	20/1	98						20/1	CONTRACTED WORK	20/1
CONTRACTED WORK	1.4	20/1	99						20/1	CONTRACTED WORK	20/1
CONTRACTED WORK	1.4	20/1	100						20/1	CONTRACTED WORK	20/1

PANEL M21 VOLTAGE 480V/277V PHASES 3, 4, WIRE 4, G.										AMP 800 MARK M20 AC RATING 35,000									
(WITH FEED-THRU LOADS)										SERVICE ENTRANCE SCHEDULE									
EQUIPMENT	WVA	CB	CKT	A	B	C	CKT	CB	WVA	EQUIPMENT	WVA	CB	CKT	A	B	C	CKT	CB	WVA
RTU-4	10.0	1/25/1	1	20.1			2	25/2	10.1	RTU-5	10.0	1/25/1	1	20.1			2	25/2	10.1
RTU-7	10.0	1/25/1	5	20.1			6	25/2	10.1	RTU-8	10.0	1/25/1	5	20.1			6	25/2	10.1
RTU-5	11.3	1/25/1	13	13.3			14	13/3	13.3	RTU-6	11.3	1/25/1	13	13.3			14	13/3	13.3
20-4-1	2.5	20/3	19	8.5			20	20/3	8.5	20-4-3	2.5	20/3	19	8.5			20	20/3	8.5
20-4-2	4.0	20/3	25	6.0			26	20/3	6.0	20-4-4	4.0	20/3	25	6.0			26	20/3	6.0
20-5-1	2.5	20/3	31	5.8			32	20/3	5.8	20-5-3	2.5	20/3	31	5.8			32	20/3	5.8
20-5-2 & 20-5-5	4.0	20/3	37	10.0			38	20/3	10.0	20-5-4	4.0	20/3	37	10.0			38	20/3	10.0
PHASE TOTALS	67.5								67.5	CONNECTED AMP (WITH MP2):	67.5								67.5
CONNECTED AMPS WITH MP2 & MP3A:	545								545	DEMAND AMP WITH MP2 & MP3A:	545								545

PANEL M23 VOLTAGE 480V/277V PHASES 3, 4, WIRE 4, G.										AMP 800 MARK M20 AC RATING 35,000									
(WITH FEED-THRU LOADS)										SERVICE ENTRANCE SCHEDULE									
EQUIPMENT	WVA	CB	CKT	A	B	C	CKT	CB	WVA	EQUIPMENT	WVA	CB	CKT	A	B	C	CKT	CB	WVA
RTU-11	5.9	1/25/1	1	13.3			2	25/2	13.3	RTU-10	5.9	1/25/1	1	13.3			2	25/2	13.3
RTU-11	7.4	1/25/1	7	13.4			8	13/3	13.4	RTU-11	7.4	1/25/1	7	13.4			8	13/3	13.4
RTU-2	20.9	1/25/1	13	27.7			14	13/3	27.7	RTU-10	20.9	1/25/1	13	27.7			14	13/3	27.7
MC-2-1	2.7	20/3	19	5.2			20	20/3	5.2	20-1-3	2.7	20/3	19	5.2			20	20/3	5.2
20-1-2	3.3	20/3	25	5.8			26	20/3	5.8	20-1-4	3.3	20/3	25	5.8			26	20/3	5.8
20-9-1	6.0	20/3	31	9.3			32	20/3	9.3	20-9-3	6.0	20/3	31	9.3			32	20/3	9.3
20-9-2	3.3	20/3	37	5.3			38	20/3	5.3	20-9-4	3.3	20/3	37	5.3			38	20/3	5.3
PHASE TOTALS	78.9								78.9	CONNECTED AMP (WITH MP4):	78.9								78.9
CONNECTED AMPS WITH MP4:	480								480	DEMAND AMP (WITH MP4):	480								480

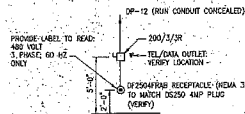
PANEL B21 VOLTAGE 208V/120V PHASES 3, 4, WIRE 4, G.										AMP 225 MARK M20 AC RATING 10,000									
(WITH FEED-THRU LOADS)										SERVICE ENTRANCE SCHEDULE									
EQUIPMENT	WVA	CB	CKT	A	B	C	CKT	CB	WVA	EQUIPMENT	WVA	CB	CKT	A	B	C	CKT	CB	WVA
MECH ROOM 152	1.2	20/1	1	1.4			2	20/1	1.4	SPARE	1.2	20/1	1	1.4			2	20/1	1.4
MECH ROOM 153	1.2	20/1	5				6	20/1		SPARE	1.2	20/1	5				6	20/1	
ROOMS 153 & 154A	1.2	20/1	7	1.0			8	20/1	1.0	SPARE	1.2	20/1	7	1.0			8	20/1	1.0
ROOMS 148 & 150	1.2	20/1	9				10	20/1		SPARE	1.2	20/1	9				10	20/1	
ROOMS 148 & 149	1.2	20/1	11				12	20/1		SPARE	1.2	20/1	11				12	20/1	
COMMERCIAL	1.2	20/1	13	1.2			14	20/1	1.2	SPARE	1.2	20/1	13	1.2			14	20/1	1.2
ARMED-155-159	1.0	20/1	15				16	20/1		SPARE	1.0	20/1	15				16	20/1	
COMMERCIAL	1.4	20/1	17				18	20/1		SPARE	1.4	20/1	17				18	20/1	
ROOMS 151 & 152	1.4	20/1	19	1.4			20	20/1	1.4	SPARE	1.4	20/1	19	1.4			20	20/1	1.4
ROOM 153	1.4	20/1	21				22	20/1		SPARE	1.4	20/1	21				22	20/1	
ROOM C-154-154A	1.0	20/1	23				24	20/1		SPARE	1.0	20/1	23				24	20/1	
OFFICE 151	1.4	20/1	25	1.4			26	20/1	1.4	SPARE	1.4	20/1	25	1.4			26	20/1	1.4
CONCRETE 159	1.0	20/1	27				28	20/1		SPARE	1.0	20/1	27				28	20/1	
WIP	0.8	20/1	29				30	20/1		SPARE	0.8	20/1	29				30	20/1	
PART FANS	1.4	20/1	31	1.4			32	20/1	1.4	SPARE	1.4	20/1	31	1.4			32	20/1	1.4
CF-18	0.5	20/1	33				34	20/1		SPARE	0.5	20/1	33				34	20/1	
CF-19	0.5	20/1	35				36	20/1		SPARE	0.5	20/1	35				36	20/1	
CHANGING LUG PACKS	0.2	20/1	37	0.2			38	20/1	0.2	SPARE	0.2	20/1	37	0.2			38	20/1	0.2
WIP PUMP	1.1	20/2	39				40	20/1		SPARE	1.1	20/2	39				40	20/1	
PHASE TOTALS	13.6								13.6	CONNECTED AMP (SECTION 1 WITH FEED-THRU LOADS)	13.6								13.6

PANEL M22 VOLTAGE 480V/277V PHASES 3, 4, WIRE 4, G.										AMP 800 MARK M20 AC RATING 35,000									
(WITH FEED-THRU LOADS)										SERVICE ENTRANCE SCHEDULE									
EQUIPMENT	WVA	CB	CKT	A	B	C	CKT	CB	WVA	EQUIPMENT	WVA	CB	CKT	A	B	C	CKT	CB	WVA
20-1-2	6.0	20/3	1	12.8			2	20/3	12.8	20-11-3	6.0	20/3	1	12.8			2	20/3	12.8
20-7-4	3.3	20/3	7	7.3			8	20/3	7.3	20-7-1	3.3	20/3	7	7.3			8	20/3	7.3
20-8-3	6.0	20/3	13	10.0			14	20/3	10.0	20-7-3	6.0	20/3	13	10.0			14	20/3	10.0
SPARE	6.0	20/3	19	8.5			20	20/3	8.5	20-8-4	6.0	20/3	19	8.5			20	20/3	8.5
SPARE	2.5	20/3	25	5.8			26	20/3	5.8	SPARE	2.5	20/3	25	5.8			26	20/3	5.8
SPARE	2.5	20/3	31	5.8			32	20/3	5.8	SPARE	2.5	20/3	31	5.8			32	20/3	5.8
SPARE	2.5	20/3	37	5.8			38	20/3	5.8	SPARE	2.5	20/3	37	5.8			38	20/3	5.8
PHASE TOTALS	209								209	CONNECTED AMP:	209								209

PANEL M25 VOLTAGE 480V/277V PHASES 3, 4, WIRE 4, G.										AMP 800 MARK M20 AC RATING 35,000									
(WITH FEED-THRU LOADS)										SERVICE ENTRANCE SCHEDULE									
EQUIPMENT	WVA	CB	CKT	A	B	C	CKT	CB	WVA	EQUIPMENT	WVA	CB	CKT	A	B	C	CKT	CB	WVA
20-11-1	3.3	20/3	1	9.3			2	20/3	9.3	20-11-3	3.3	20/3	1	9.3			2	20/3	9.3
20-11-2	3.3	20/3	7	6.6			8	20/3	6.6	20-11-4	3.3	20/3	7	6.6			8	20/3	6.6
20-11-1	3.3	20/3	13	6.6			14	20/3	6.6	20-12-5	3.3	20/3	13	6.6			14	20/3	6.6
20-12-1	3.3	20/3	15	6.6			16	20/3	6.6	20-12-8	3.3	20/3	15	6.6			16	20/3	6.6
20-12-2	3.3	20/3	21	3.3			22	20/3	3.3	20-12-8	3.3	20/3	21	3.3			22	20/3	3.3
20-12-3	3.3	20/3	27	3.3			28	20/3	3.3	20-12-8	3.3	20/3	27	3.3			28	20/3	3.3
20-12-4	3.3	20/3	33	3.3			34	20/3	3.3	20-12-8	3.3	20/3	33	3.3			34	20/3	3.3
20-12-5	2.5	20/3	37	2.5			38	20/3	2.5	20-12-8	2.5	20/3	37	2.5			38	20/3	2.5
PHASE TOTALS	303								303	CONNECTED AMP:	303								303

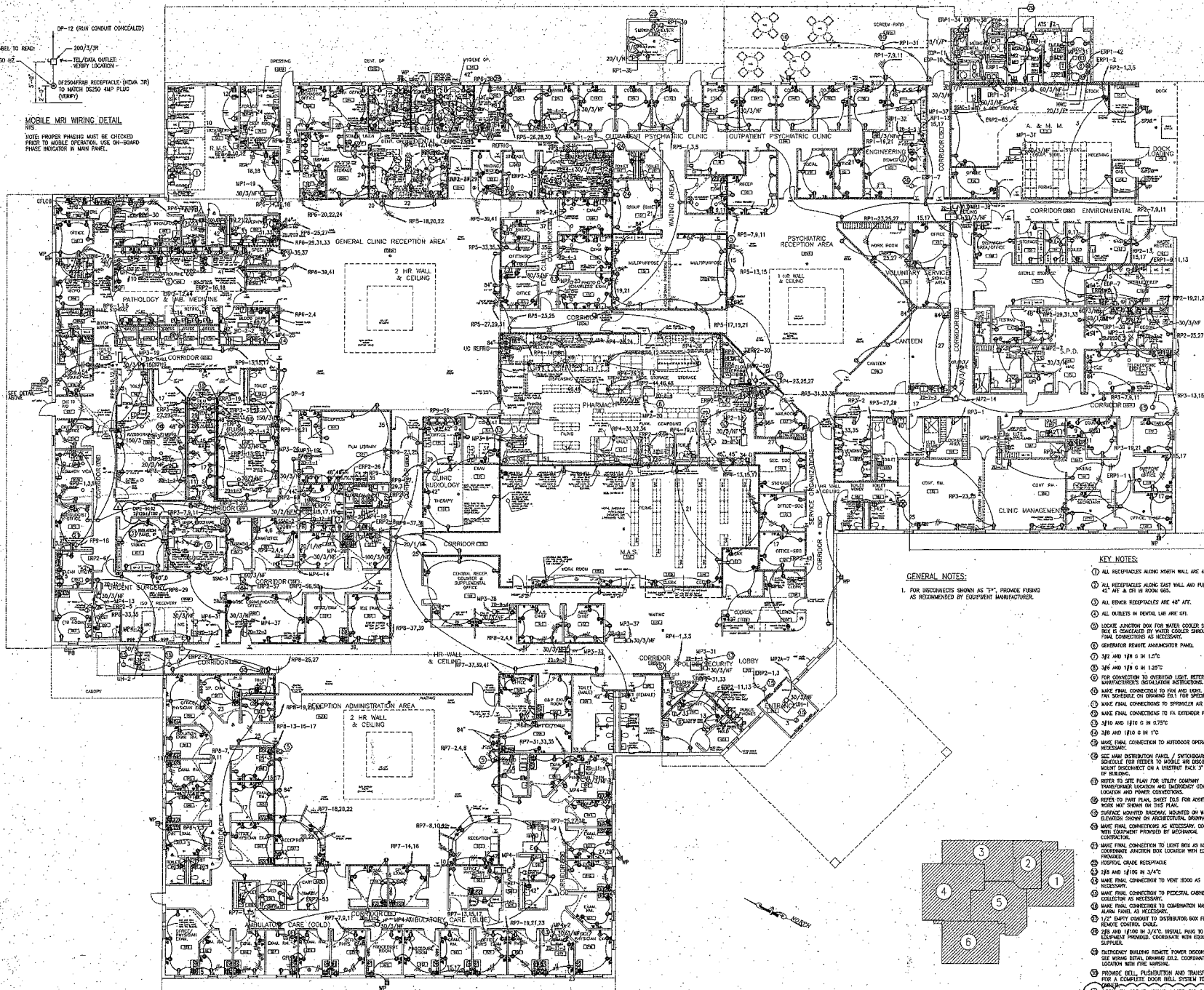
PANEL B22 VOLTAGE 208/120 PHASES 3, 4, WIRE 4, G.										AMP 225 MARK M20 AC RATING 10,000										
(WITH FEED-THRU LOADS)										SERVICE ENTRANCE SCHEDULE										
EQUIPMENT	WVA	CB	CKT	A	B	C	CKT	CB	WVA	EQUIPMENT	WVA	CB	CKT	A	B	C	CKT	CB	WVA	
PLAN 1-100	1.4	20/1	1	1.4			2	20/1	1.4	SPARE	1.4	20/1	1	1.4			2	20/1	1.4	
ROOMS 151 & 159	1.4	20/1	3				4	20/1		SPARE	1.4	20/1	3				4	20/1		
MECH ROOM 152	1.4	20/1	5				6	20/1		SPARE	1.4	20/1	5				6	20/1		
ROOMS 151, 152 & 153	1.0	20/1	7	1.0			8	20/1	1.0	SPARE	1.0	20/1	7	1.0			8	20/1	1.0	
ROOMS 154 & 155	1.2	20/1	9				10	20/1		SPARE	1.2	20/1	9				10	20/1		
ROOMS 156 & 158	1.0	20/1	11				12	20/1		SPARE	1.0	20/1	11				12	20/1		
ROOM 158	0.8	20/1	13	0.8			14	20/1	0.8	SPARE	0.8	20/1	13	0.8			14	20/1	0.8	
ROOM 158	0.8	20/1	15				16	20/1		SPARE	0.8	20/1	15				16	20/1		
CHIMNEY 167	1.2	20/1	17				18	20/1		SPARE	1.2	20/1	17				18	20/1		
ROOM 168	0.8	20/1	19	0.8			20	20/1	0.8	SPARE	0.8	20/1	19	0.8			20	20/1	0.8	
ROOM 169	1.0	20/1	21				22	20/1		SPARE	1.0	20/1	21				22	20/1		
ROOM 169	0.8	20/1	23				24	20/1	0.8	20/1	0.8	20/1	23				24	20/1	0.8	
TELEPHONE 170	1.2	20/1	25	1.0			26	20/1	1.2	SPARE	1.2	20/1	25	1.0			26	20/1	1.2	
TELEPHONE 175	1.2	20/1	27	1.2			28	20/1	1.2	SPARE	1.2	20/1	27	1.2			28	20/1	1.2	
ROOM 174	1.2	20/1	29				30	20/1		SPARE	1.2	20/1	29				30	20/1		
ROOMS 170 & 171	1.0	20/1	31	1.0			32	20/1	1.0	SPARE	1.0	20/1	31	1.0			32	20/1	1.0	
LAUNDRY & SHOWER	1.0	20/1	33				34	20/1		SPARE	1.0	20/1	33				34	20/1		
OUTLET CHARGER	0.5	20/1	35				36	20/1	0.5	20/1	0.5	20/1	35				36	20/1	0.5	
EXD. SOUTH LUG	1.2	20/1	37	1.1			38	20/1	1.2	SPARE	1.2	20/1	37	1.1			38	20/1	1.2	
EXD. SOUTH LUG	1.2	20/1	39				40	20/1		SPARE	1.2	20/1	39				40	20/1		
EXD. SOUTH LUG	0.8	20/1	41				42	20/1	0.8	20/1	0.8	20/1	41				42	20/1	0.8	
PHASE TOTALS																				
CONNECTED AMP'S				61.3				71.0				CONNECTED WATTS				12,100				12,100





MOBILE MRI WIRING DETAIL

NOTE: WIRING PHASES MUST BE CHECKED PRIOR TO MOBILE OPERATION. USE ON-BUILD PHASE INDICATOR IN MAIN PANEL.

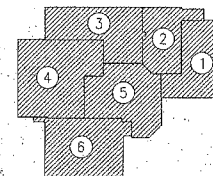


GENERAL NOTES:

1. FOR RECEPTACLES SHOWN AS "T", PROVIDE FEEDING AS RECOMMENDED BY EQUIPMENT MANUFACTURER.

KEY NOTES:

1. ALL RECEPTACLES ALONG NORTH WALL ARE 48" AFF. UOL.
2. ALL RECEPTACLES ALONG EAST WALL AND FURNITURE ARE 42" AFF. & 91" IN ROOM UOL.
3. ALL OTHER RECEPTACLES ARE 48" AFF.
4. ALL OUTLETS IN SPECIAL USE ARE 48"
5. LOWER CLOSET BOX FOR WATER COOLER SHOWN THAT BOX IS CONCEALED BY WATER COOLER SHROUD. MAKE FINAL CONNECTIONS AS NECESSARY.
6. GENERATOR REMOTE ANNUNCIATOR PANEL.
7. 3/4" AND 1/2" G IN 1.5'.
8. 3/4" AND 1/2" G IN 1.25'.
9. FOR CONNECTION TO OVERHEAD LIGHT, REFER TO MANUFACTURER'S INSTALLATION INSTRUCTIONS.
10. MAKE FINAL CONNECTION TO FAN AND LIGHT, REFER TO THE SPECIFICATIONS ON DRAWING E01 FOR SPECIFICATIONS.
11. MAKE FINAL CONNECTION TO SPRINKLER AND COMPRESSOR.
12. MAKE FINAL CONNECTIONS TO FA EXTERIOR PANEL.
13. 3/16" AND 1/16" G IN 0.75'.
14. 3/8" AND 1/8" G IN 1'.
15. MAKE FINAL CONNECTION TO AUTODOOR SENSORS AS NECESSARY.
16. SEE MAIN DISTRIBUTION PANEL / PHOTOGRAPHIC SCHEDULE FOR FEEDER TO X-RAY DISCONNECT. MOUNT DISCONNECT ON A UNIFRUIT BACK 3" OFF FACE OF BUILDING.
17. REFER TO SITE PLAN FOR UTILITY COMPANY TRANSMISSION LOCATION AND EMERGENCY OPERATOR LOCATION AND POWER CONNECTIONS.
18. REFER TO FINAL PANEL SHEET E01 FOR ADDITIONAL WORK NOT SHOWN ON THIS PLAN.
19. SURFACE MOUNTED RACQING, MOUNTED ON WALL AT ELEVATION SHOWN ON ARCHITECTURAL DRAWINGS.
20. MAKE FINAL CONNECTIONS AS NECESSARY. COORDINATE WITH EQUIPMENT PROVIDED BY MECHANICAL CONTRACTOR.
21. MAKE FINAL CONNECTION TO LEAKS BOX AS NECESSARY. COORDINATE JUNCTION BOX LOCATION WITH EQUIPMENT MANUFACTURER.
22. JUNCTION GRADE RECEPTACLE.
23. 3/8" AND 1/16" G IN 3/4'.
24. MAKE FINAL CONNECTION TO VENT 1000 AS NECESSARY.
25. MAKE FINAL CONNECTION TO FEDERAL CABINET DUST COLLECTOR AS NECESSARY.
26. MAKE FINAL CONNECTION TO COMBINATION WATER ALARM PANEL AS NECESSARY.
27. 1/2" RAMPY CORDSET TO DISTRIBUTION BOX FOR REMOTE CONTROL CABLE.
28. 3/8" AND 1/16" G IN 3/4'. INSTALL PLUG TO MATCH EQUIPMENT PROVIDED. COORDINATE WITH EQUIPMENT SUPPLIER.
29. EXTERIOR BUILDING REMOTE POWER SCHEDULE. SEE WORKING DRAWING E01. COORDINATE EXACT LOCATION WITH FIRE MARSHAL.
30. PROVIDE BELL, PULLSTATION AND TRANSFORMER PLUS A COMPLETE DOOR BELL SYSTEM TO SUIT OWNER.
31. REFER TO SPECIFICATIONS 18075 FOR PANEL DESCRIPTION. COORDINATE EXACT LOCATION AND WALL DEPTH FOR 8" DEEP PANEL WITH INSULON EQUIPMENT.



DATE	NO. REVISIONS	DATE	NO. REVISIONS
7/1/02	1	7/1/02	1
12/2/02	2	12/2/02	2
1/17/03	3	1/17/03	3
3/9/03	4	3/9/03	4
4/2/03	5	4/2/03	5
5/1/03	6	5/1/03	6

DATE	NO. REVISIONS	DATE	NO. REVISIONS
7/1/02	1	7/1/02	1
12/2/02	2	12/2/02	2
1/17/03	3	1/17/03	3
3/9/03	4	3/9/03	4
4/2/03	5	4/2/03	5
5/1/03	6	5/1/03	6

DATE	NO. REVISIONS	DATE	NO. REVISIONS
7/1/02	1	7/1/02	1
12/2/02	2	12/2/02	2
1/17/03	3	1/17/03	3
3/9/03	4	3/9/03	4
4/2/03	5	4/2/03	5
5/1/03	6	5/1/03	6

DATE	NO. REVISIONS	DATE	NO. REVISIONS
7/1/02	1	7/1/02	1
12/2/02	2	12/2/02	2
1/17/03	3	1/17/03	3
3/9/03	4	3/9/03	4
4/2/03	5	4/2/03	5
5/1/03	6	5/1/03	6

DATE	NO. REVISIONS	DATE	NO. REVISIONS
7/1/02	1	7/1/02	1
12/2/02	2	12/2/02	2
1/17/03	3	1/17/03	3
3/9/03	4	3/9/03	4
4/2/03	5	4/2/03	5
5/1/03	6	5/1/03	6

DATE	NO. REVISIONS	DATE	NO. REVISIONS
7/1/02	1	7/1/02	1
12/2/02	2	12/2/02	2
1/17/03	3	1/17/03	3
3/9/03	4	3/9/03	4
4/2/03	5	4/2/03	5
5/1/03	6	5/1/03	6

DATE	NO. REVISIONS	DATE	NO. REVISIONS
7/1/02	1	7/1/02	1
12/2/02	2	12/2/02	2
1/17/03	3	1/17/03	3
3/9/03	4	3/9/03	4
4/2/03	5	4/2/03	5
5/1/03	6	5/1/03	6

DATE	NO. REVISIONS	DATE	NO. REVISIONS
7/1/02	1	7/1/02	1
12/2/02	2	12/2/02	2
1/17/03	3	1/17/03	3
3/9/03	4	3/9/03	4
4/2/03	5	4/2/03	5
5/1/03	6	5/1/03	6

DATE	NO. REVISIONS	DATE	NO. REVISIONS
7/1/02	1	7/1/02	1
12/2/02	2	12/2/02	2
1/17/03	3	1/17/03	3
3/9/03	4	3/9/03	4
4/2/03	5	4/2/03	5
5/1/03	6	5/1/03	6

DATE	NO. REVISIONS	DATE	NO. REVISIONS
7/1/02	1	7/1/02	1
12/2/02	2	12/2/02	2
1/17/03	3	1/17/03	3
3/9/03	4	3/9/03	4
4/2/03	5	4/2/03	5
5/1/03	6	5/1/03	6

DATE	NO. REVISIONS	DATE	NO. REVISIONS
7/1/02	1	7/1/02	1
12/2/02	2	12/2/02	2
1/17/03	3	1/17/03	3
3/9/03	4	3/9/03	4
4/2/03	5	4/2/03	5
5/1/03	6	5/1/03	6

DATE	NO. REVISIONS	DATE	NO. REVISIONS
7/1/02	1	7/1/02	1
12/2/02	2	12/2/02	2
1/17/03	3	1/17/03	3
3/9/03	4	3/9/03	4
4/2/03	5	4/2/03	5
5/1/03	6	5/1/03	6

DATE	NO. REVISIONS	DATE	NO. REVISIONS
7/1/02	1	7/1/02	1
12/2/02	2	12/2/02	2
1/17/03	3	1/17/03	3
3/9/03	4	3/9/03	4
4/2/03	5	4/2/03	5
5/1/03	6	5/1/03	6

DATE	NO. REVISIONS	DATE	NO. REVISIONS
7/1/02	1	7/1/02	1
12/2/02	2	12/2/02	2
1/17/03	3	1/17/03	3
3/9/03	4	3/9/03	4
4/2/03	5	4/2/03	5
5/1/03	6	5/1/03	6

DATE	NO. REVISIONS	DATE	NO. REVISIONS
7/1/02	1	7/1/02	1
12/2/02	2	12/2/02	2
1/17/03	3	1/17/03	3
3/9/03	4	3/9/03	4
4/2/03	5	4/2/03	5
5/1/03	6	5/1/03	6

DATE	NO. REVISIONS	DATE	NO. REVISIONS
7/1/02	1	7/1/02	1
12/2/02	2	12/2/02	2
1/17/03	3	1/17/03	3
3/9/03	4	3/9/03	4
4/2/03	5	4/2/03	5
5/1/03	6	5/1/03	6

DATE	NO. REVISIONS	DATE	NO. REVISIONS
7/1/02	1	7/1/02	1
12/2/02	2	12/2/02	2
1/17/03	3	1/17/03	3
3/9/03	4	3/9/03	4
4/2/03	5	4/2/03	5
5/1/03	6	5/1/03	6

DATE	NO. REVISIONS	DATE	NO. REVISIONS
7/1/02	1	7/1/02	1
12/2/02	2	12/2/02	2
1/17/03	3	1/17/03	3
3/9/03	4	3/9/03	4
4/2/03	5	4/2/03	5
5/1/03	6	5/1/03	6

DATE	NO. REVISIONS	DATE	NO. REVISIONS
7/1/02	1	7/1/02	1
12/2/02	2	12/2/02	2
1/17/03	3	1/17/03	3
3/9/03	4	3/9/03	4
4/2/03	5	4/2/03	5
5/1/03	6	5/1/03	6

DATE	NO. REVISIONS	DATE	NO. REVISIONS
7/1/02	1	7/1/02	1
12/2/02	2	12/2/02	2
1/17/03	3	1/17/03	3
3/9/03	4	3/9/03	4
4/2/03	5	4/2/03	5
5/1/03	6	5/1/03	6

DATE	NO. REVISIONS	DATE	NO. REVISIONS
7/1/02	1	7/1/02	1
12/2/02	2	12/2/02	2
1/17/03	3	1/17/03	3
3/9/03	4	3/9/03	4
4/2/03	5	4/2/03	5
5/1/03	6	5/1/03	6

DATE	NO. REVISIONS	DATE	NO. REVISIONS
7/1/02	1	7/1/02	1
12/2/02	2	12/2/02	2
1/17/03	3	1/17/03	3
3/9/03	4	3/9/03	4
4/2/03	5	4/2/03	5
5/1/03	6	5/1/03	6

DATE	NO. REVISIONS	DATE	NO. REVISIONS
7/1/02	1	7/1/02	1
12/2/02	2	12/2/02	2
1/17/03	3	1/17/03	3
3/9/03	4	3/9/03	4
4/2/03	5	4/2/03	5
5/1/03	6	5/1/03	6

DATE	NO. REVISIONS	DATE	NO. REVISIONS
7/1/02	1	7/1/02	1
12/2/02	2	12/2/02	2
1/17/03	3	1/17/03	3
3/9/03	4	3/9/03	4
4/2/03	5	4/2/03	5
5/1/03	6	5/1/03	6

DATE	NO. REVISIONS	DATE	NO. REVISIONS
7/1/02	1	7/1/02	1
12/2/02	2	12/2/02	2
1/17/03	3	1/17/03	3
3/9/03	4	3/9/03	4
4/2/03	5	4/2/03	5
5/1/03	6	5/1/03	6

DATE	NO. REVISIONS	DATE	NO. REVISIONS
7/1/02	1	7/1/02	1
12/2/02	2	12/2/02	2
1/17/03	3	1/17/03	3
3/9/03	4	3/9/03	4
4/2/03	5	4/2/03	5
5/1/03	6	5/1/03	6

DATE	NO. REVISIONS	DATE	NO. REVISIONS
7/1/02	1	7/1/02	1
12/2/02	2	12/2/02	2
1/17/03	3	1/17/03	3
3/9/03	4	3/9/03	4
4/2/03	5	4/2/03	5
5/1/03	6	5/1/03	6

DATE	NO. REVISIONS	DATE	NO. REVISIONS
7/1/02	1	7/1/02	1
12/2/02	2	12/2/02	2
1/17/03	3	1/17/03	3
3/9/03	4	3/9/03	4
4/2/03	5	4/2/03	5
5/1/03	6	5/1/03	6

DATE	NO. REVISIONS	DATE	NO. REVISIONS
7/1/02	1	7/1/02	1
12/2/02	2	12/2/02	2
1/17/03	3	1/17/03	3
3/9/03	4	3/9/03	4
4/2/03	5	4/2/03	5
5/1/03	6	5/1/03	6

DATE	NO. REVISIONS	DATE	NO. REVISIONS
7/1/02	1	7/1/02	1
12/2/02	2	12/2/02	2
1/17/03	3	1/17/03	3
3/9/03	4	3/9/03	4
4/2/03	5	4/2/03	5
5/1/03	6	5/1/03	6

DATE	NO. REVISIONS	DATE	NO. REVISIONS
7/1/02	1	7/1/02	1
12/2/02	2	12/2/02	2
1/17/03	3	1/17/03	3
3/9/03	4	3/9/03	4
4/2/03	5	4/2/03	5
5/1/03	6	5/1/03	6

DATE	NO. REVISIONS	DATE	NO. REVISIONS
7/1/02	1	7/1/02	1
12/2/02	2	12/2/02	2
1/17/03	3	1/17/03	3
3/9/03	4	3/9/03	4
4/2/03	5	4/2/03	5
5/1/03	6	5/1/03	6

DATE	NO. REVISIONS	DATE	NO. REVISIONS
7/1/02	1	7/1/02	1
12/2/02	2	12/2/02	2
1/17/03	3	1/17/03	3
3/9/03	4	3/9/03	4
4/2/03	5	4/2/03	5
5/1/03	6	5/1/03	6

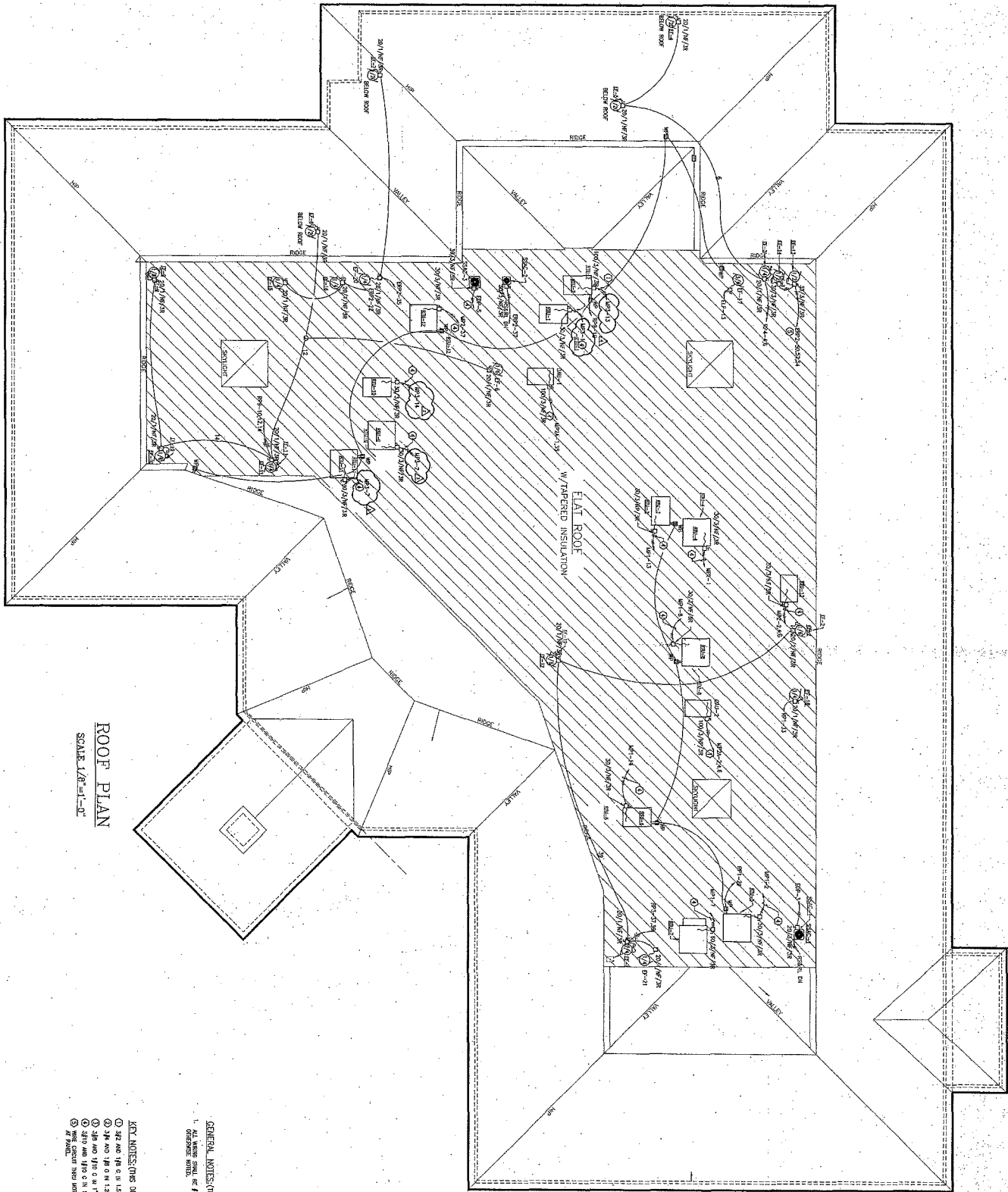
DATE	NO. REVISIONS	DATE	NO. REVISIONS
7/1/02	1	7/1/02	1
12/2/02	2	12/2/02	2
1/17/03	3	1/17/03	3
3/9/03	4	3/9/03	4
4/2/03	5	4/2/03	5
5/1/03	6	5/1/03	6

DATE	NO. REVISIONS	DATE	NO. REVISIONS
7/1/02	1	7/1/02	1
12/2/02	2	12/2/02	2
1/17/03	3	1/17/03	3
3/9/03	4	3/9/03	4
4/2/03	5	4/2/03	5
5/1/03	6	5/1/03	6

DATE	NO. REVISIONS	DATE	NO. REVISIONS
7/1/02	1	7/1/02	1
12/2/02	2	12/2/02	2
1/17/03	3	1/17/03	3
3/9/03	4	3/9/03	4
4/2/03	5	4/2/03	5
5/1/03	6	5/1/03	6

DATE	NO. REVISIONS	DATE	NO. REVISIONS
7/1/02	1	7/1/02	1
12/2/02	2	12/2/02	2
1/17/03	3	1/17/03	3
3/9/03	4	3/9/03	4
4/2/03	5	4/2/03	5
5/1/03	6	5/1/03	6

DATE	NO. REVISIONS
------	---------------



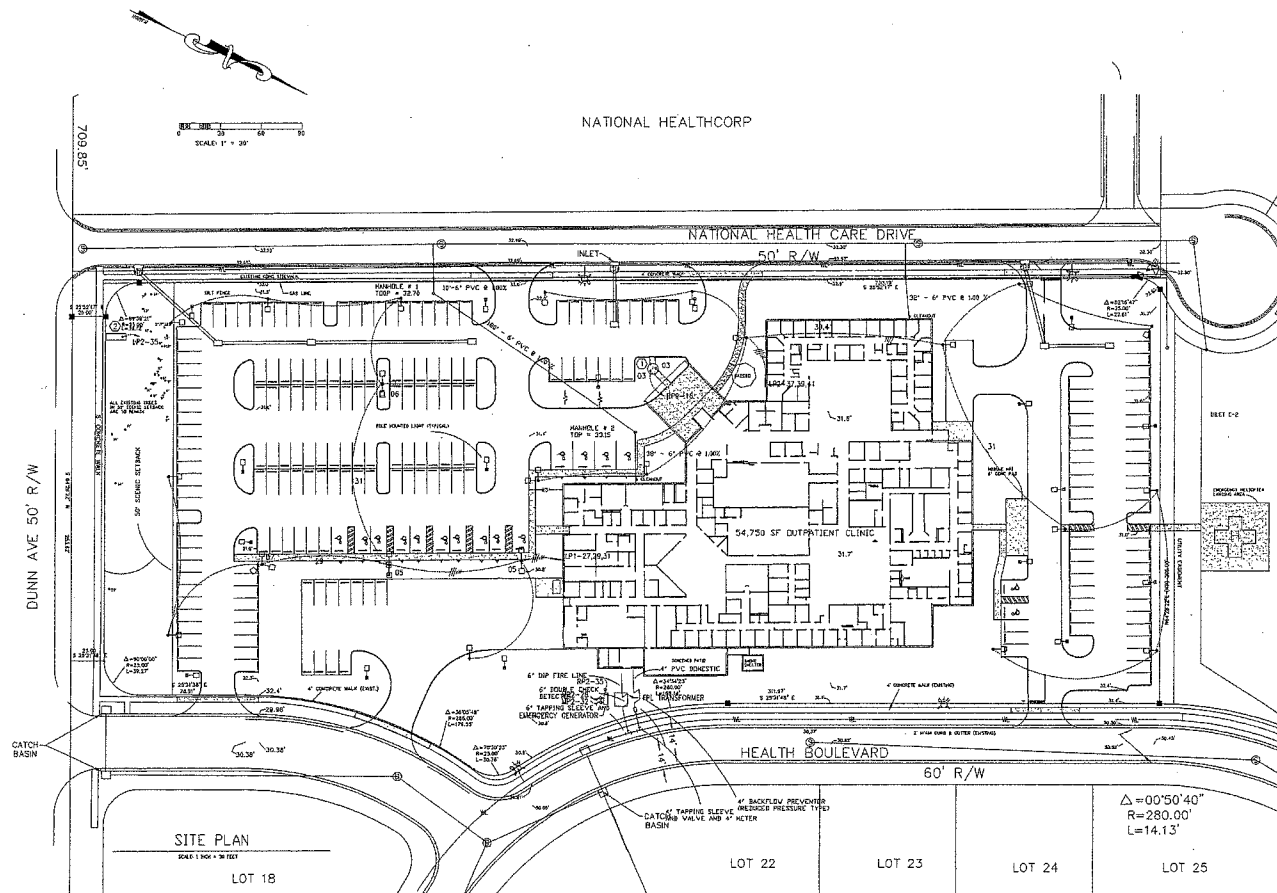
ROOF PLAN
SCALE 1/8"=1'-0"

GENERAL NOTES (THIS DRAWING ONLY)
1. ALL WORK SHALL BE IN ACCORDANCE WITH THE LATEST EDITIONS OF THE NATIONAL ELECTRICAL CODE (NEC) AND THE NATIONAL FIRE PROTECTION ASSOCIATION (NFPA) 70B.
2. ALL WORK SHALL BE IN ACCORDANCE WITH THE LATEST EDITIONS OF THE NATIONAL ELECTRICAL CODE (NEC) AND THE NATIONAL FIRE PROTECTION ASSOCIATION (NFPA) 70B.
3. ALL WORK SHALL BE IN ACCORDANCE WITH THE LATEST EDITIONS OF THE NATIONAL ELECTRICAL CODE (NEC) AND THE NATIONAL FIRE PROTECTION ASSOCIATION (NFPA) 70B.
4. ALL WORK SHALL BE IN ACCORDANCE WITH THE LATEST EDITIONS OF THE NATIONAL ELECTRICAL CODE (NEC) AND THE NATIONAL FIRE PROTECTION ASSOCIATION (NFPA) 70B.
5. ALL WORK SHALL BE IN ACCORDANCE WITH THE LATEST EDITIONS OF THE NATIONAL ELECTRICAL CODE (NEC) AND THE NATIONAL FIRE PROTECTION ASSOCIATION (NFPA) 70B.
6. ALL WORK SHALL BE IN ACCORDANCE WITH THE LATEST EDITIONS OF THE NATIONAL ELECTRICAL CODE (NEC) AND THE NATIONAL FIRE PROTECTION ASSOCIATION (NFPA) 70B.
7. ALL WORK SHALL BE IN ACCORDANCE WITH THE LATEST EDITIONS OF THE NATIONAL ELECTRICAL CODE (NEC) AND THE NATIONAL FIRE PROTECTION ASSOCIATION (NFPA) 70B.
8. ALL WORK SHALL BE IN ACCORDANCE WITH THE LATEST EDITIONS OF THE NATIONAL ELECTRICAL CODE (NEC) AND THE NATIONAL FIRE PROTECTION ASSOCIATION (NFPA) 70B.
9. ALL WORK SHALL BE IN ACCORDANCE WITH THE LATEST EDITIONS OF THE NATIONAL ELECTRICAL CODE (NEC) AND THE NATIONAL FIRE PROTECTION ASSOCIATION (NFPA) 70B.
10. ALL WORK SHALL BE IN ACCORDANCE WITH THE LATEST EDITIONS OF THE NATIONAL ELECTRICAL CODE (NEC) AND THE NATIONAL FIRE PROTECTION ASSOCIATION (NFPA) 70B.

DEPARTMENT OF VETERANS AFFAIRS OUTPATIENT CLINIC
DAYTONA, FLORIDA
SFO NO. 573 - 184 - 002 - 89
ELECTRICAL ROOF PLAN

HEIDORN DEVELOPMENT
HC 64 BOX 120
SHARPSVILLE, PA 15555
(717) 654-3056 Fax: (717) 654-2083

NO. REVISIONS	DATE	NO. REVISIONS	DATE
1	7/14/00	1	7/14/00
2	7/14/00	2	7/14/00
3	7/14/00	3	7/14/00
4	7/14/00	4	7/14/00
5	7/14/00	5	7/14/00
6	7/14/00	6	7/14/00
7	7/14/00	7	7/14/00
8	7/14/00	8	7/14/00
9	7/14/00	9	7/14/00
10	7/14/00	10	7/14/00



GENERAL NOTES:

1. ALL OUTDOOR FIXTURES SHALL BE TYPE 04 UNLESS OTHERWISE NOTED.
2. ALL WIRING TO OUTDOOR FIXTURES SHALL BE 2/8 AND 1/8 IN 1/2 UNLESS OTHERWISE NOTED.
3. PROVIDE MINIMUM PAGING FOR EACH POLE FIXTURE.
4. REFER TO TIMELOCK DETAIL, SHEET E01 FOR COORDINATE OF OUTSIDE LIGHTING.

KEY NOTES:

- ① INSTALL FIXTURES IN A 180° CONFIGURATION AS SHOWN. INSTALL FIXTURES 3' BACK FROM BASE OF POLE CORRECT THROUGH INTERNAL PHOTOCELL.
- ② MAKE FINAL CONNECTION TO VA ENTRANCE SIGN AS NECESSARY. VERIFY LOCATION PRIOR TO INSTALLATION.

DEPARTMENT OF VETERANS AFFAIRS OUTPATIENT CLINIC DALLAS, FLORIDA SFD NO. 573 - 104 - 002 - 99		HEIDORN DEVELOPMENT MC 54 BOX 2D 6700 PINE HILL RD. #200 DUNN AVE. DALLAS, TEXAS 75248-2003		NO. REVISIONS	DATE
ELECTRICAL SITE PLAN				- VA REVIEW	7/14/00
				- BUILDING PERMIT SET	10/21/00
Newcomb & Boyd Consulting Engineering Group One Main Building 7th Atlanta, Georgia 30318-7761 404-555-1340 404-555-1028 F COMMERCIAL N&S 708 7 Sheet1					
SCALE					
PROJECT NO.	580221				
DATE	JULY 3, 2000				
SCALE	1" = 30'				
DRAWING NO.	E3.0				
1 OF 1					

