

SHEET NOTES

1. DEMOUNTABLE PARTITION: BASIC OF DESIGN TO BE STEELCLAD VLA
2. DEMOUNTABLE PARTITION: PARTITION FINISH ON CORRIDOR SIDE TO BE P1 TO U.V.A. SEE S.P.102
3. DEMOUNTABLE PARTITION: PARTITION FINISH ON INTERIOR OFFICE SIDE TO BE P1 TO U.V.A.
4. DEMOUNTABLE PARTITION: DOORS AND TRANSOMS OVER DOORS TO BE P1.

KEY NOTES

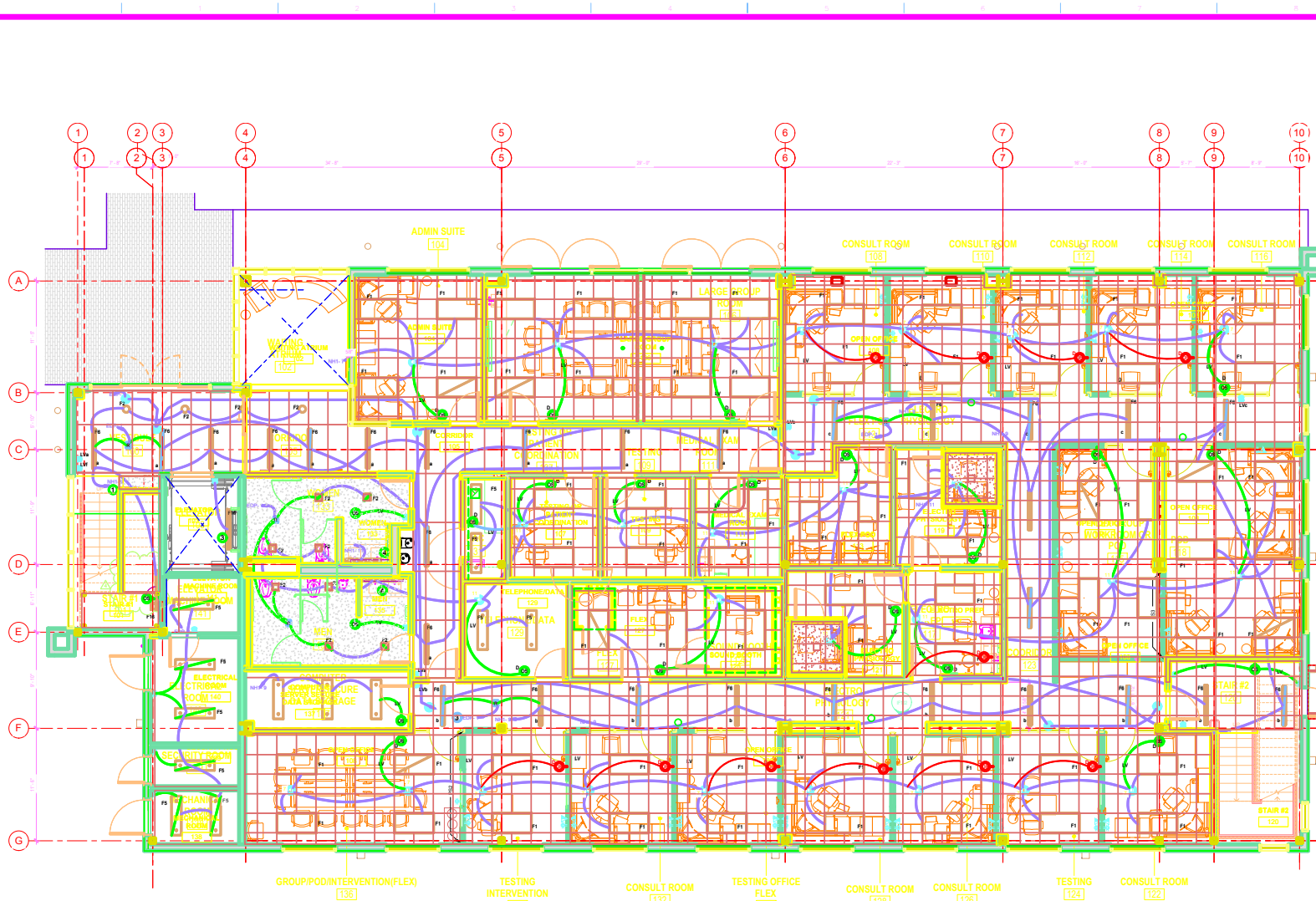
LEGEND

- NON-RATED PARTITION
- WINDOW
- DOOR
- 1-HR RATED PARTITION
- DEMOUNTABLE PARTITION SYSTEM - GLAZED PANEL
- DEMOUNTABLE PARTITION SYSTEM - DOOR
- DEMOUNTABLE PARTITION SYSTEM - STEEL PANEL ON BACK PAINTED GLASS PANEL
- FOURPLEX OUTLET
- DATA OUTLET

DEMOUNTABLE PARTITION FINISH LEGEND

- P1: WHITE WALNUT - 3304
- P2: PAINTED STEEL - WHEAT 4051
- P3: PAINTED STEEL - WHEAT 4042
- P4: PAINTED STEEL - SEASIDE 4043
- P5: PAINTED GLASS COLOR WASH 4044
- P6: CLEAR LAMINATED WHEAT
- P7: 5-PHASE GLASS CRIPPA LIGHT GLASS

FURNISHING AND DEMOUNTABLE PARTITION SYSTEM SUBMISSION



1 FIRST FLOOR OFFICE DEMOUNTABLE PARTITION AND FURNISHING PLAN
1/4" = 1'-0"

CONSULTANTS:		ARCHITECT		Drawing Title		Project Title		Project Number		Office of Construction and Facilities Management	
POLYTECH ASSOCIATES INC.		POLYTECH ASSOCIATES INC.		FIRST FLOOR OFFICE DEMOUNTABLE PARTITION AND FURNISHING PLAN		NEUROCOG TB RESEARCH BUILDING / BUILDING IN DEMOLITION / NEW PARKING LOT		810-125		Building Number	
235 Pine Street, 17th Floor		235 Pine Street, 17th Floor		Approved Project Director		Location		Drawing Number		IF101	
San Francisco, CA 94104		San Francisco, CA 94104				150 MUR ROAD, MARTINEZ, CA 94553					
TEL (415) 397-3117		TEL (415) 397-3117				Date		Checked		Drawn	
FAX (415) 397-1517		FAX (415) 397-1517				03/06/2016		JB		BA	