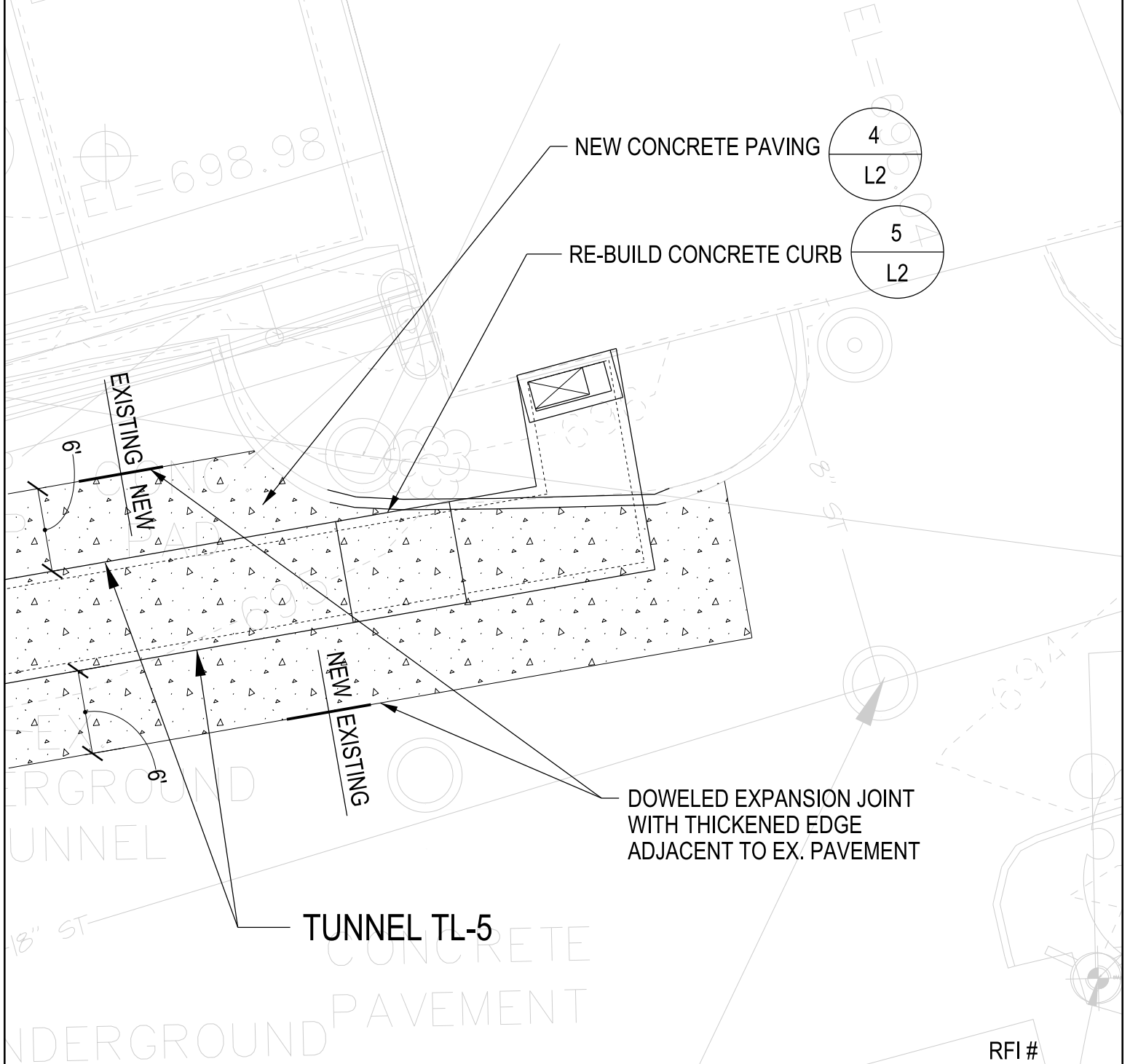


EXIST SAN MH
TR=696.02
IE IN(W)=686.32
IE OUT(E)=686.32



HEERY

design

125 South Dubuque Street, Suite 500
Iowa City, Iowa 52240-4003
319.354.4700

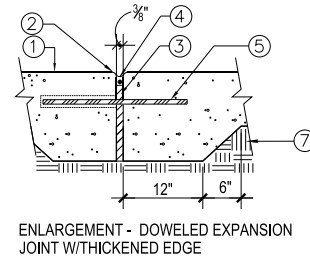
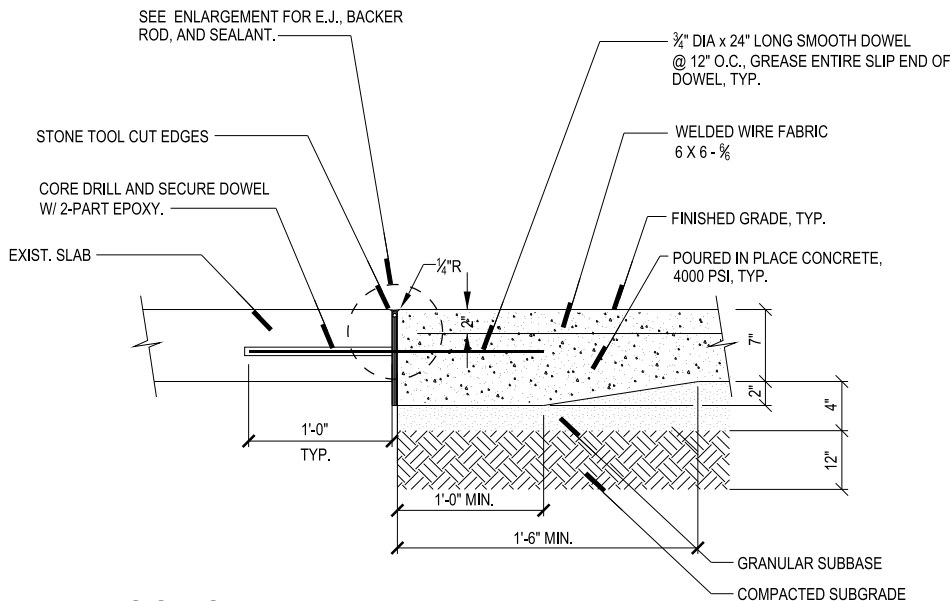
PROJECT
ICVA HEALTH CARE SYSTEM IOWA CITY, IOWA
MECHANICAL SITE DEVELOPMENT
(PROJ. # 636A8-12-003)
DRAWING TITLE
ADDENDUM 1

PROJ. NO. 1125501
DATE 08-10-12
DR. BY JT
CHK. BY LB
DRAWING
APPLIES TO L2

SUPPLEMENTAL
DRAWING NO.

SD-01

1 SHEET
OF 6

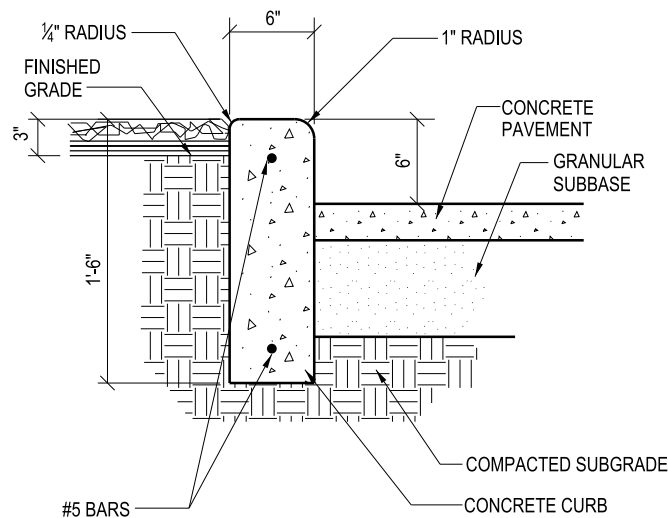


- NOTES:
1. CONCRETE PAVING.
 2. 1/4" TOOLED RADIUS EDGE.
 3. PRE-MOLDED EXPANSION JOINT FILLER.
 4. MASTIC SEALANT, COLOR TO MATCH ADJACENT PAVING. IN THOSE AREAS WITH SIMULATED NATURAL SURFACE (I.E. DIRT) APPLY SAND WHEN WET TO REDUCE MASTIC SHEEN.
 5. 3/4" DIA. x 24" LONG SMOOTH STEEL SLIP DOWEL, CENTER IN CONCRETE
 6. EXISTING CONCRETE PAVING
 7. COMPACTED SUB BASE
 8. CURB OR WALL FACE WHERE EDGE CONDITION EXISTS
 9. TOOLED JOINT WITHOUT RADIUS EDGE TO BE STRIKED IN IRREGULAR LINE PRIOR TO STAMP & SKIN APPLICATIONS

CONCRETE PAVEMENT TYPICAL SECTION

4

NTS



5

CURB, TYPICAL SECTION

NTS

RFI #

SUPPLEMENTAL
DRAWING NO.

SD-01

2 SHEET OF 6

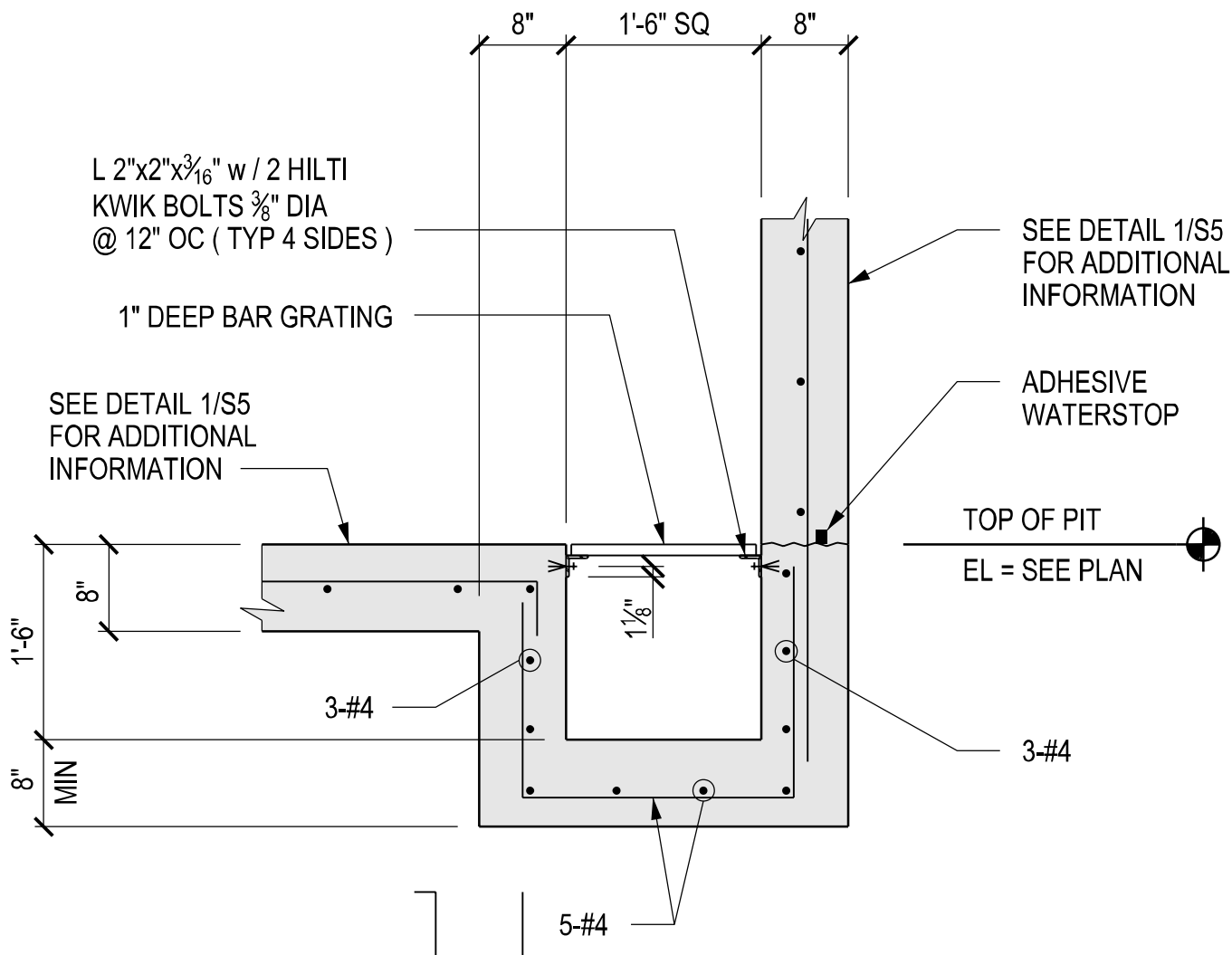
HEERY

design

125 South Dubuque Street, Suite 500
Iowa City, Iowa 52240-4003
319.354.4700

PROJECT
ICVA HEALTH CARE SYSTEM IOWA CITY, IOWA
MECHANICAL SITE DEVELOPMENT
(PROJ. # 636A8-12-003)
DRAWING TITLE
ADDENDUM 1

PROJ. NO. 1125501
DATE 08-10-12
DR. BY JT
CHK. BY LB
DRAWING
APPLIES TO L2



HEERY

design

125 South Dubuque Street, Suite 500
Iowa City, Iowa 52240-4003
319.354.4700

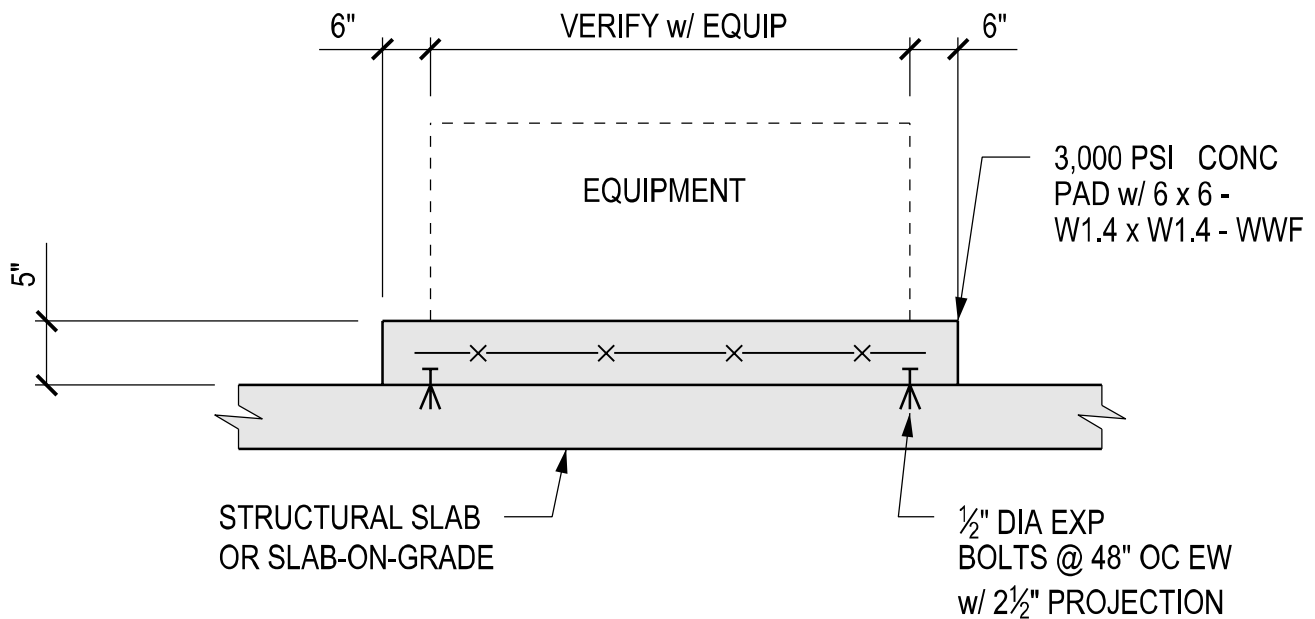
PROJECT
ICVA HEALTH CARE SYSTEM IOWA CITY, IOWA
MECHANICAL SITE DEVELOPMENT
(PROJ. # 636A8-12-003)
DRAWING TITLE
ADDENDUM 1

PROJ. NO. 1125501
DATE 08-10-12
DR. BY CGT
CHK. BY CGT
DRAWING APPLIES TO S6

RFI #
SUPPLEMENTAL
DRAWING NO.

SD-01

3 SHEET OF 6



COORDINATE PAD SIZE AND LOCATION w/ MECH DWGS

12 TYP HOUSEKEEPING PAD



125 South Dubuque Street, Suite 500
Iowa City, Iowa 52240-4003
319.354.4700

PROJECT
ICVA HEALTH CARE SYSTEM IOWA CITY, IOWA
MECHANICAL SITE DEVELOPMENT
(PROJ. # 636A8-12-003)
DRAWING TITLE
ADDENDUM 1

PROJ. NO. 1125501
DATE 08-10-12
DR. BY CGT
CHK. BY CGT
DRAWING
APPLIES TO S6

RFI #

SUPPLEMENTAL
DRAWING NO.

SD-01

4 SHEET OF 6

HEERY

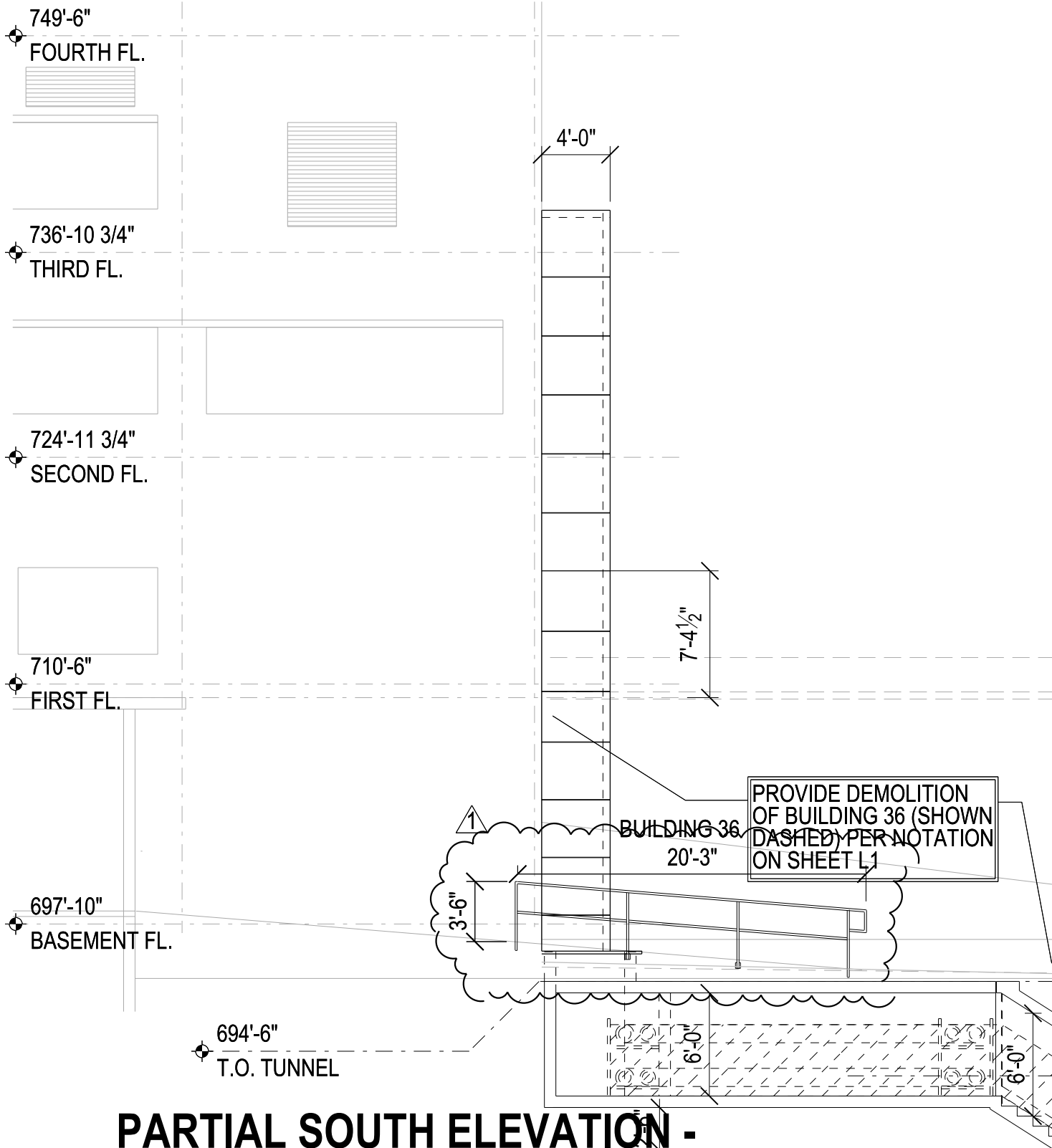
design

125 South Dubuque Street, Suite 500
Iowa City, Iowa 52240-4003
319.354.4700

PROJECT
ICVA HEALTH CARE SYSTEM IOWA CITY, IOWA
MECHANICAL SITE DEVELOPMENT
(PROJ. # 636A8-12-003)
DRAWING TITLE
ADDENDUM 1

PROJ. NO. 1125501
DATE 08-10-12
DR. BY JMB
CHK. BY JMB
DRAWING
APPLIES TO H10

RFI #
SUPPLEMENTAL
DRAWING NO.
SD-01
5 SHEET OF 6



PARTIAL SOUTH ELEVATION - BUILDING 1, TUNNEL, AND BLDG. 16

1

1/8"=1'-0"

RFI #



design

125 South Dubuque Street, Suite 500
Iowa City, Iowa 52240-4003
319.354.4700

PROJECT
ICVA HEALTH CARE SYSTEM IOWA CITY, IOWA
MECHANICAL SITE DEVELOPMENT
(PROJ. # 636A8-12-003)
DRAWING TITLE
ADDENDUM # 1

PROJ. NO. 1125501
DATE 08-10-12
DR. BY FF
CHK. BY DN
DRAWING APPLIES TO A5

SUPPLEMENTAL
DRAWING NO.

SD-01

SHEET 6 OF 6