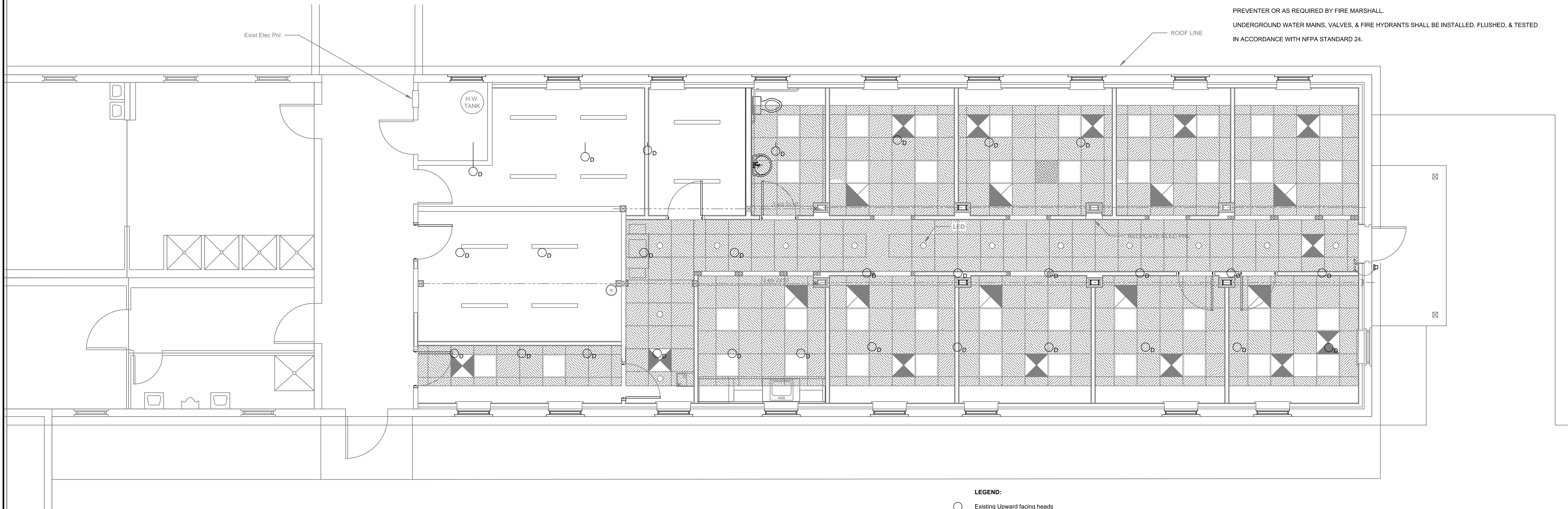
[illegible]

OBTAIN THE SERVICES OF A STATE QUALIFIED AND LICENSED SPRINKLER CONTRACTOR TO DESIGN,
OBTAIN NECESSARY STATE AND LOCAL APPROVALS OF DESIGN AND INSTALL A COMPLETE FIRE
PROTECTION SPRINKLER SYSTEM PER CODE & NFPA 13 CODE. FIRE PROTECTION CONTRACTOR
SHALL SUBMIT COPIES OF THE DESIGN CALCULATIONS, FLOW TESTS, ETC. FOR ARCHITECT/ENGINEER
APPROVAL AND SUBMIT REQUIRED COPIES TO LOCAL FIRE AUTHORITIES FOR APPROVAL PRIOR TO
INSTALLATION OF SYSTEM. FIRE PROTECTION CONTRACTOR SHALL COORDINATE WITH GENERAL
CONTRACTOR, MECHANICAL, PLUMBING AND ELECTRICAL CONTRACTOR TO ADJUST FOR INTERFERENCES
AND ADJUST SPRINKLER DESIGN AND LAYOUT ACCORDINGLY. FIRE PROTECTION CONTRACTOR SHALL
FIELD TEST THE SPRINKLER SYSTEM PER STATE AND LOCAL CODE AND NFPA 13 STANDARDS.
SPRINKLER SYSTEM SHALL BE WET-PIPE TYPE .

SPRINKLERS SHALL BE CONCEALED TYPE - IF INSTALLED IN SUSPENDED CEILING, & CENTER IN CEILING
GRID. INCOMING SPRINKLER LINE SHALL HAVE AN ASSE 1013 REDUCED PRESSURE BACKFLOW
PREVENTER OR AS REQUIRED BY FIRE MARSHALL.

UNDERGROUND WATER MAINS, VALVES, & FIRE HYDRANTS SHALL BE INSTALLED, FLUSHED, & TESTED
IN ACCORDANCE WITH NFPA STANDARD 24.



○ Existing Upward facing heads

○_D Existing Downward facing heads

Note: New/Relocated heads to be center of tile.

1 Floor Plan - Existing Sprinkler Heads on Reflected Ceiling Plan
1/4" = 1' 0"

[illegible]