

**SCOPE OF WORK**  
**REPLACE FLOWER WATERING STATIONS**  
**MOUNTAIN HOME NATIONAL CEMETERY**  
**MOUNTAIN HOME, TENNESSEE**

- A. Scope of Work.** Furnish all labor, tools, materials, and equipment to demolish and remove the fifteen (15) existing hydrants from the flower watering stations and replace with new hydrants at Mountain Home National Cemetery (See Figures 1 and 2 below). At each watering station (See Figure 3 below), the existing trash and flower vase receptacles shall be reused. The existing hydrants shall be removed from the site and properly disposed of. The new hydrants will tie into the existing water source. The new concrete slab shall be 4" thick of 3000 psi concrete sloped to drain with a medium broom finish. Any sod/turf disturbed by construction activities must be replaced to its original condition. The composition of the grass species in the sod shall be a tall fescue and bluegrass mix. Remove any excess materials and debris.

The new water hydrants shall meet the following requirements:

- Furnish and install the flower watering stations, including trash and vase receptacles and hydrant. Complete any required work necessary to make the water supply equipment operate using the water supply source indicated.
- Flower watering station materials, finishes, and colors shall fully comply with the attached specifications and Contract Drawings or be deemed as approved equal.
- Water spigots shall be Haws model 6252 EHLF Faucet Valve or approved equal. This spigot is an ADA compliant spigot operated with a paddle that allows the water to flow when pushed either right or left, with 2 Kg (5 lbs) of force or less. The assembly shall be installed with a pressure regulating valve and isolation valve installed in a meter box. The assembly is to be blown out if located in a region where the temperatures seasonally go below freezing. The spigot assembly shall contain all pipes, fittings, attachments, mounting base, and any other ancillary materials or equipment to produce a fully functional water spigot assembly, as indicated on the drawings, from the connection to the irrigation water system at the isolation valve for the spigot.
- Install water spigot assemblies according to manufacturer's recommendations, including pipe, isolation valve, fittings, pressure reducing valve, and valve boxes. All anchoring hardware shall be stainless steel. Coordinate all work with other trades.
- Hydrant: See Specification Section 32 33 00 Site Furnishings

- Curb Stop Valve: Brass body, 300 psi minimum working pressure. ASTM B-62, female threaded connections, with stop and waste feature. Acceptable manufacturers are Ford, Mueller, A.Y. McDonald or approved equal.
- Pressure Regulator: Use an adjustable, bronze body pressure regulator with integral stainless steel strainer. Spring range 25-75 psi, 1-inch inlet and outlet. Acceptable manufacturers and models are Apollo Series 36, Watts Model 223, Wilkins Model 600 or approved equal.
- Copper Pipe: Use Type 'M' soft tubing conforming to ASTM Standard B88. Use wrought copper or cast bronze fittings, soldered, flared mechanical, or threaded joint per installation details or local code. Use a 95-percent tin and 5-percent antimony solder.
- Valve Box: Use plastic jumbo-size rectangular valve box with black lid. Acceptable manufacturer is Carson Maclean Highline (Pentek), Rain Bird, or approved equal.
- Minimum cover: 18-inches over flower watering station supply pipe (distance from top of pipe to finish grade). Compact backfill material to achieve 95 percent maximum dry density according to ASTM D698.
- Flower Watering Station Hydrant Connection Assembly: Coordinate exact locations with the COR. Components up to and including Copper Type 'M' Pipe are to be installed before concrete slab. After concrete slab is finished, complete installation of remaining components. Coordinate installation with concrete contractor. Adjust pressure regulating valve to regulate the downstream operating pressure to 30 psi.
- Brand "FW" in 2-inch high by 3/16-inch deep letters on valve box lid.

The replacement water hydrant installation shall be in accordance with the following standards/specifications (See Attachment 1):

- Section 32 33 00, Site Furnishings
- Section 32 90 00, Planting
- Section 03 30 00, Cast-In-Place Concrete
- Section 32 05 23, Cement and Concrete for Exterior Improvements

**Figure 1: Location Map**

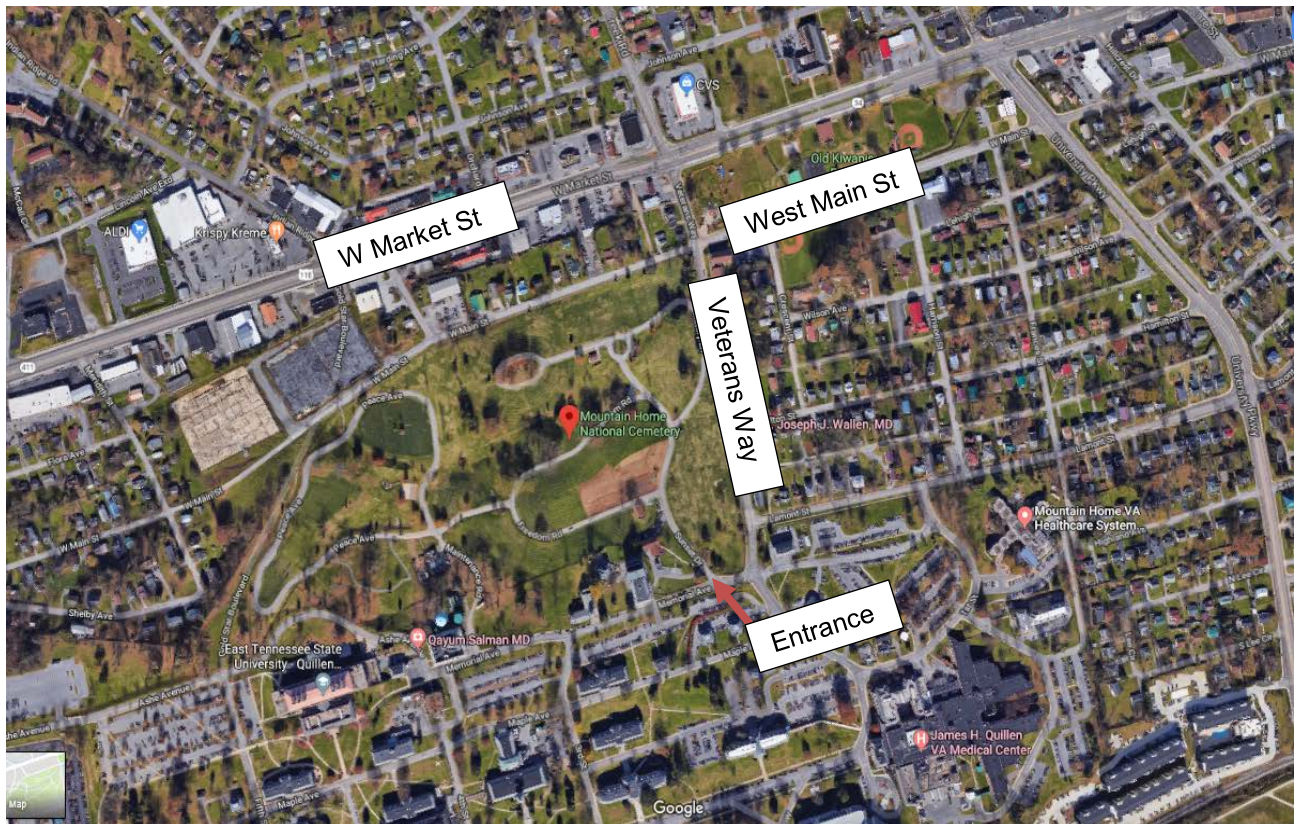
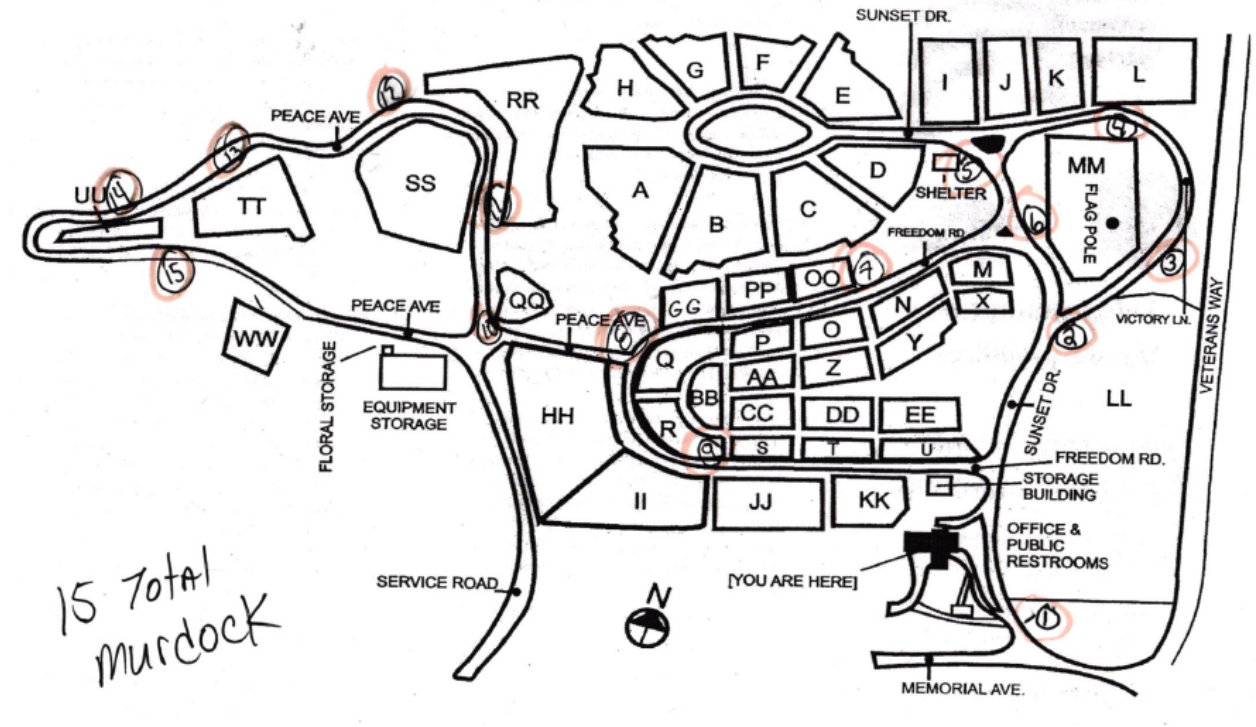






Figure 3: Hydrant Locations

## Mountain Home National Cemetery



**B. Cemetery Location.**

Mountain Home National Cemetery  
53 Memorial Avenue  
Mountain Home, TN 37684  
Phone: (423) 979-3535

**C. Drawings and Specifications:**

1. None

**D. Project Information.**

1. Period of Performance. The contractor shall complete all work within 30 calendar days after issuance of Notice to Proceed. Time stated includes final cleanup of the premises.
2. Work Hours. All work shall be performed between the normal business hours of 7:30 am to 4:30 pm, Monday thru Friday, excluding Federal Legal holidays.
3. Pre-bid Site Inspection. A pre-bid site inspection is recommended. Contact the Cemetery Director at (423) 979-3535 to make site visit arrangements.
4. Pre-construction Meeting. The contractor shall not commence performance of work until the Contracting Officer has conducted a preconstruction meeting or has advised the contractor that a preconstruction meeting is not required.
5. Detailed Work Plan. The contractor shall provide in writing a detailed work plan which presents the contractor's plan for completing the work. The contractor's plan shall be responsive with the scope of work and describe, in detail, the approach to be used for each task required. For each task, the contractor shall identify all necessary subtasks (if any), associated costs by task, and milestone dates. Four copies of the contractor's work plan shall be provided to the Contracting Officer's Representative (COR) prior to issuance of the Notice to Proceed.
6. Changes to the Scope of Work. Any changes to the scope of work shall be authorized and approved only by the Contracting Officer. Any costs incurred by the contractor through directions of parties other than the Contracting Officer shall be borne by the contractor.

**E. Standards of Conduct.** The National Cemetery Administration honors veterans with a final resting place and lasting memorials that commemorate their service to our Nation. National Cemeteries are national shrines. The standards of work, appearance, and procedures performed by the contractor at the cemetery shall reflect this nations concern for those interred there. Due to the sensitive mission of the cemetery, contractor personnel must exercise and exhibit absolute decorum, composure, and stability at all times.

1. The burial activities at a National Cemetery shall take precedence over construction activities. The Contractor shall cooperate and coordinate with the Cemetery Director in arranging construction schedule activities to cause the least possible interference with cemetery activities in actual burial areas. Construction noise during the interment services shall not disturb the service. Trucks and workmen shall not pass through the service area during this period.

2. The contractor shall cease work operations as necessary to ensure that no contract work causes any funeral, ceremony, procession or visitation be delayed, altered, or otherwise impacted in such a way that the dignity, serenity or security of the event is compromised.
3. The Contractor is required to discontinue his work sufficiently in advance of Easter Sunday, Mother's Day, Father's Day, Memorial Day, Veteran's Day and Federal holidays, to permit the contractor to clean up all areas of operation adjacent to existing burial plots before these dates. Cleaning up shall include the removal of all equipment, tools, materials and debris and leaving the areas in a clean, neat condition.
4. Workmen are subject to rules of the Cemetery applicable to their conduct. While on site at the National Cemetery, contractor personnel shall be required to adhere to the following standards of dress and conduct while performing work in the national cemetery. These standards and regulations are enforceable under Title 38, U.S.C., Section 218.
5. Contractor personnel appearance and conduct shall be professional and unobtrusive at all times. Shirts and full length pants must be worn at all times.
6. Smoking is not allowed in any building at the National Cemetery.
7. The playing of radios, etc., is prohibited on site or in buildings. The contractor's work force is governed by the same rules governing cemetery employees. All individuals failing to comply will be removed from the site.
8. Sexual harassment will not be tolerated and the offending individual(s) will be removed from the site.
9. Contractor personnel shall not sleep on cemetery grounds, sit or stand on installed grave markers, or put, place or lean equipment or materials on grave markers.
10. Questions from cemetery visitors shall be politely referred or directed to cemetery personnel.
11. The contractor shall ensure that all employees behave with appropriate decorum, courtesy, and respect while within the cemetery or at its perimeter or entrances. Shouting, cursing, angry outbursts, sleeping, intoxication, unsafe driving of private or company vehicles, and violence or criminal acts of any kind will not be tolerated and is cause for immediate removal from the cemetery.
12. The contractor and subcontractors shall not fuel equipment in grass/turf areas. Petroleum based products will damage the grass/turf. Contractor shall bear all costs associated with removing any contaminated soil as a result of fueling in grass/turf areas and shall resod the area.