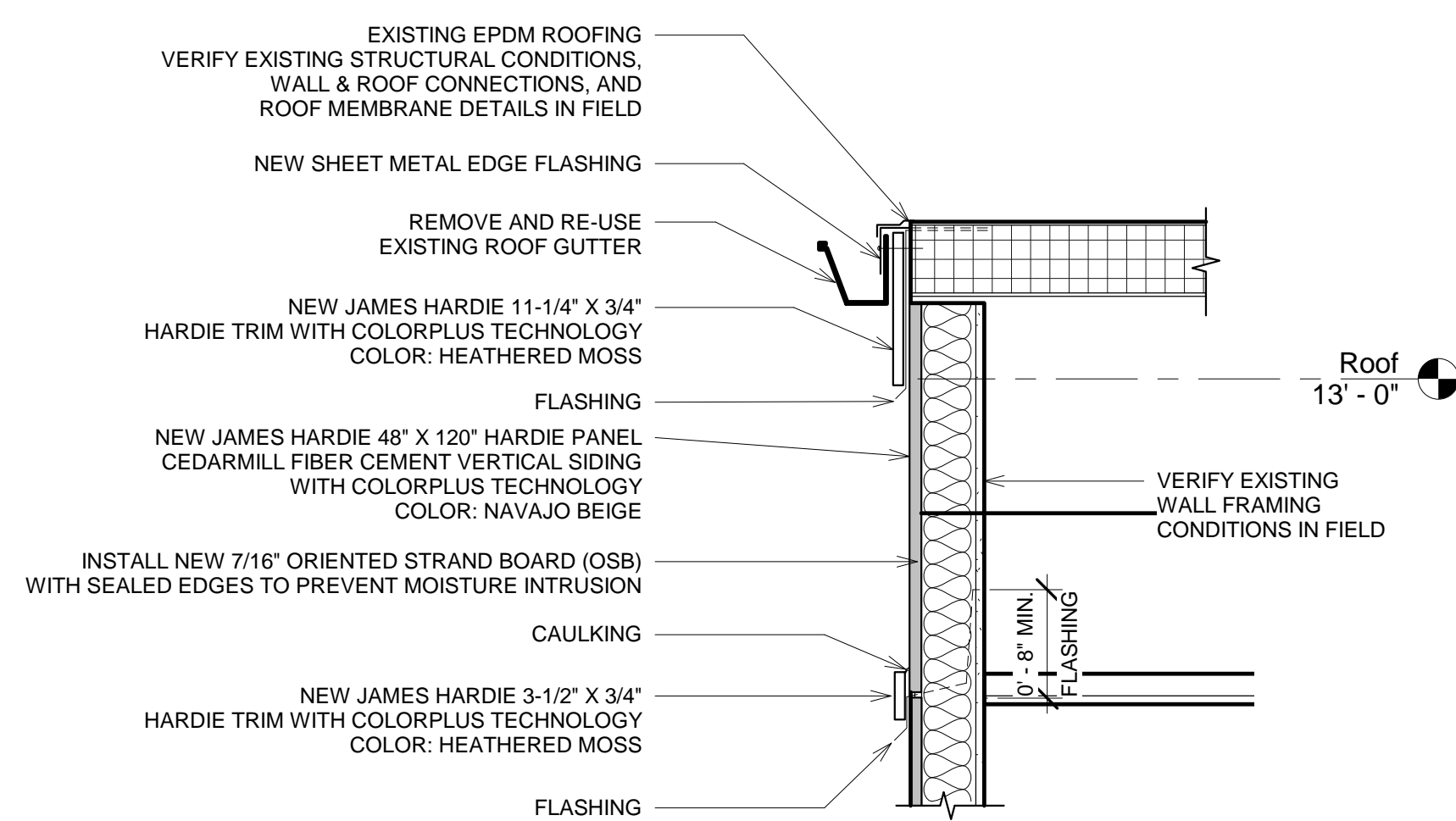


Section 3 - TYPICAL NEW CONDITION @
WALL
1/2" = 1'-0"

NOTES:

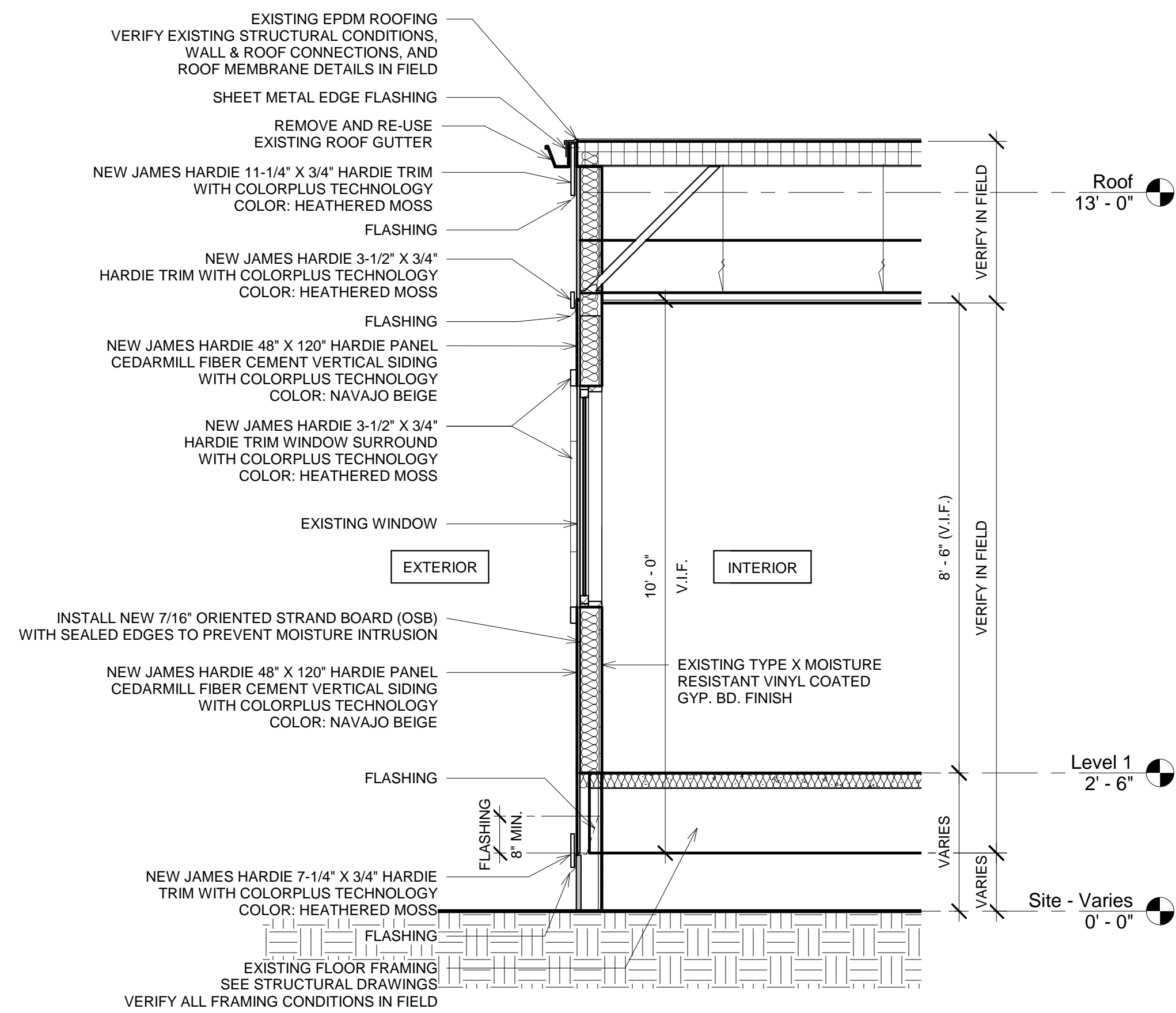
HARDIE BOARD SIDING AND ASSOCIATED PRODUCTS ARE BEING USED AS A STANDARD AND PRODUCTS OF EQUAL OR HIGHER GRADE MAY BE USED.



Section 3 - ENLARGED DETAIL @ ROOF & WALL
 3 1" = 1'-0"

NOTES:

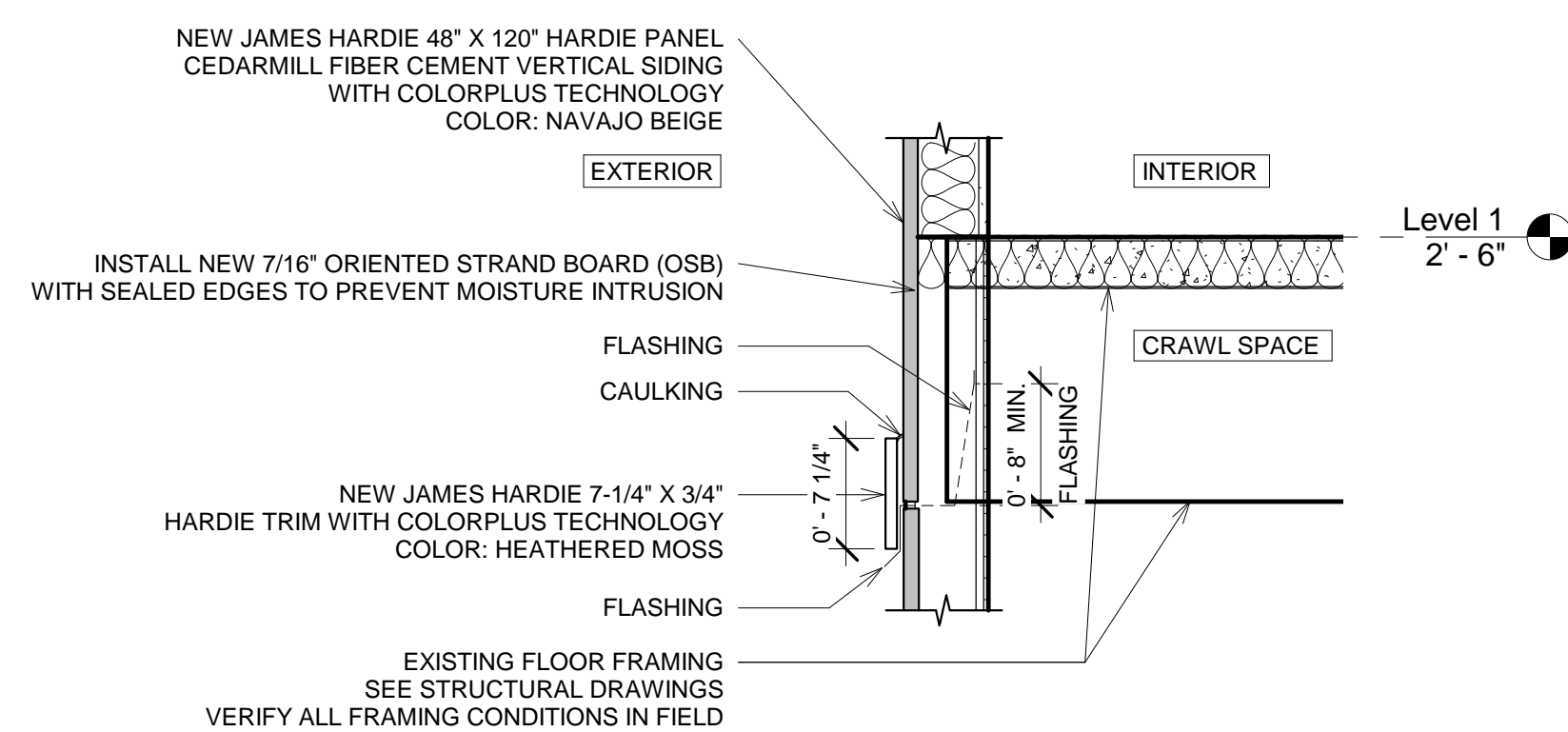
HARDIE BOARD SIDING AND ASSOCIATED PRODUCTS ARE BEING USED AS A STANDARD AND PRODUCTS OF EQUAL OR HIGHER GRADE MAY BE USED.



Section 4 - TYPICAL NEW CONDITION @
WINDOW
1/2" = 1'-0"

NOTES:

HARDIE BOARD SIDING AND ASSOCIATED PRODUCTS ARE BEING USED AS A STANDARD AND PRODUCTS OF EQUAL OR HIGHER GRADE MAY BE USED.



Section 3 - ENLARGED DETAIL @ WALL &
CRAWL SPACE
4 1" = 1'-0"

NOTES:


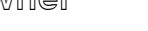
HARDIE BOARD SIDING AND ASSOCIATED PRODUCTS ARE BEING USED AS A STANDARD AND PRODUCTS OF EQUAL OR HIGHER GRADE MAY BE USED.

REVISIONS:		DATE

VA FORM 08-6231

CONSULTANTS:

ARCHITECT/ENGINEERS:

DRAWING TITLE DETAILED WALL SECTIONS - ENLARGED WALL SECTIONS		PROJECT TITLE HAMMOND C.B.O.C. EXTERIOR WALL REPAIR PROJECT		PROJECT NUMBER 629-17-105		BUILDING NUMBER	
APPROVED: PROJECT DIRECTOR		LOCATION NEW ORLEANS, LOUISIANA 70119		DOCUMENT SET PACKAGE		 	
				DRAWING NUMBER A102			
		DATE 04/11/18		CHECKED FEMI	DRAWN FEMI		