

ARCHITECTURAL ABBREVIATIONS

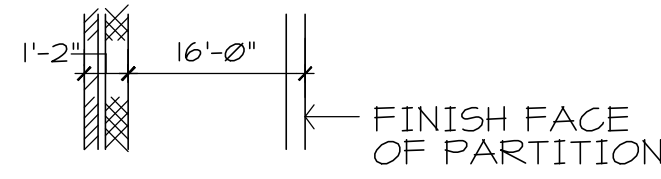
AB	ANCHOR BOLT	SCHED	SCHEDULED
ADD	ADDENDUM	SHT	SHEET
AFF	ABOVE FINISH FLOOR	SIM	SIMILAR
ALT	ALTERNATE	SPEC	SPECIFICATION
APT	APARTMENT	SPR	SEMI PRIVATE ROOM
ARCH	ARCHITECTURAL	STOR	STORAGE
		STRUCT	STRUCTURAL
		SU	SOILED UTILITY
BLDG	BUILDING	TOIL	TOILET
BR	BEDROOM	TOJ	TOP OF JOIST
		TOM	TOP OF MASONRY
CJ	CORNER GUARD	TOS	TOP OF STEEL
CL	CLEAN LINEN	TOW	TOP OF WALL
CMU	CONCRETE MASONRY UNIT	TRN	TRAINING
CONC	CONCRETE	TYP	TYPICAL
CONF	CONFERENCE	UNO	UNLESS NOTED OTHERWISE
CONT	CONTINUOUS	VEST	VESTIBULE
CONTR	CONTRACTOR	VIF	VERIFY IN FIELD
COTR	CONTRACTING OFFICER'S TECHNICAL REPRESENTATIVE		
		W/	WITH
CW	CLEAN UTILITY	WHL CHR	WHEELCHAIR
	CASEWORK	W/O	WITHOUT
DIA	DIAMETER		
DWGS	DRAWINGS		
EB	EXPANSION BOLT		
EJ	EXPANSION JOINT		
EL	ELEVATION		
ELEC	ELECTRICAL		
ELEV	ELEVATOR		
EQ	EQUAL		
EQUIP	EQUIPMENT		
EXIST	EXISTING		
EXT	EXTERIOR		
EWG	ELECTRIC WATER COOLER		
FE	FIRE EXTINGUISHER		
FEC	FIRE EXTINGUISHER CABINET		
FL	FLOOR		
FRT	FIRE RETARDANT TREATED		
GALV	GALVANIZED		
GWB	GYPSUM WALL BOARD		
HR	HOOR		
ID	INSIDE DIAMETER		
INT	INTERIOR		
ISOL	ISOLATION		
JAN	JANITOR		
LOC	LIMITS OF CONSTRUCTION		
LP	LOW POINT		
MACH	MACHINE		
MAINT	MAINTENANCE		
MECH	MECHANICAL		
MED	MEDICAL		
MO	MASONRY OPENING		
NA	NOT APPLICABLE		
NIC	NOT IN CONTRACT		
NTS	NOT TO SCALE		
OC	ON CENTER		
OD	OUTSIDE DIAMETER		
OH	OPPOSITE HAND		
PR	PRIVATE ROOM		
PT	PHYSICAL THERAPY		
R	RADIUS		
RE	REFER		
RECPT	RECEPTION		
RM	ROOM		
RO	ROUGH OPENING		

ARCHITECTURAL SHEET NUMBERING SERIES

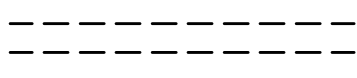
A0.	GENERAL INFORMATION, FIRE PROTECTION PLANS	A5.	EXTERIOR ELEVATIONS, BUILDING SECTIONS
AD1.	ARCHITECTURAL DEMOLITION	A6.	WALL SECTIONS, AND EXTERIOR DETAILS
A1.	FLOOR PLANS, ROOF PLAN	A7.	INTERIOR DETAILS, ELEVATIONS, SECTIONS
A2.	ENLARGED PLANS	A8.	VERTICAL CIRCULATION
A3.	REFLECTED CEILING PLANS	A9.	SPECIAL CONSTRUCTION
A4.	SCHEDULES		

NOTE: THESE ARE STANDARD SHEET SERIES
NUMBERS AND ALL SHEET SERIES
NOTED ON THIS SHEET MAY NOT APPLY.

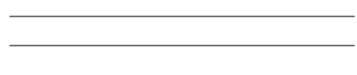
ARCHITECTURAL SYMBOLS



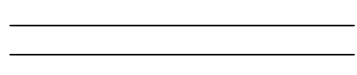
Dimension Line



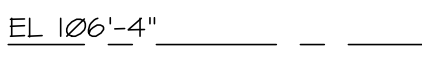
Existing Construction
To Be Removed



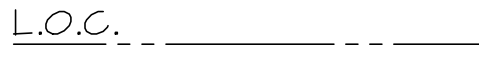
Existing Construction
To Remain



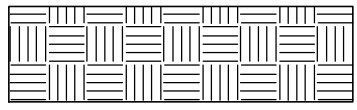
New Construction



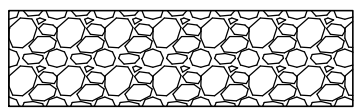
Building Elevation



Limits Of Construction



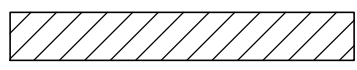
Earth



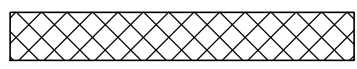
Porous Fill
(Stone Or Gravel)



Cast-in-place Concrete



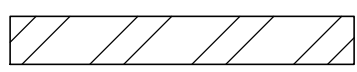
Brick



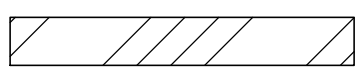
Concrete Masonry Units



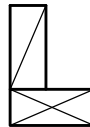
Marble / Granite



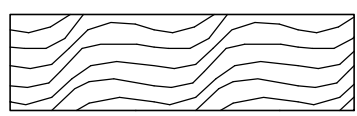
Steel (Large Scale)



Other Metals
(Large Scale)



Wood Blocking



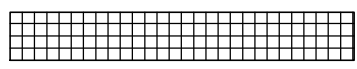
Finish Wood



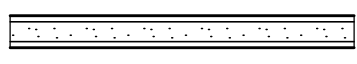
Plywood



Batt Insulation



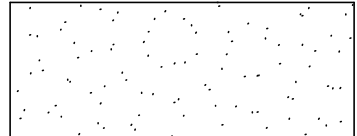
Rigid Insulation



Gypsum Wall Board

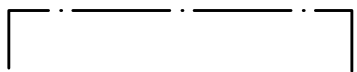


Glass

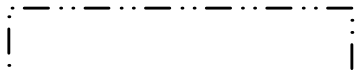


Sand, Cement, Grout

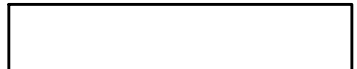
EQUIPMENT SYMBOLS:



VV Item - VA Supplied
and Installed



VC Item - VA Supplied
and Contractor Installed



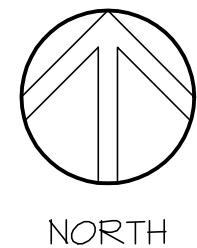
CC Item - Contractor
Supplied and Installed



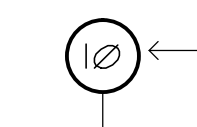
Equipment Number

NOTE: THESE ARE STANDARD SYMBOLS AND ALL
SYMBOLS NOTED ON THIS SHEET MAY NOT
APPLY.

ARCHITECTURAL SYMBOLS

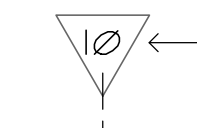


North Symbol



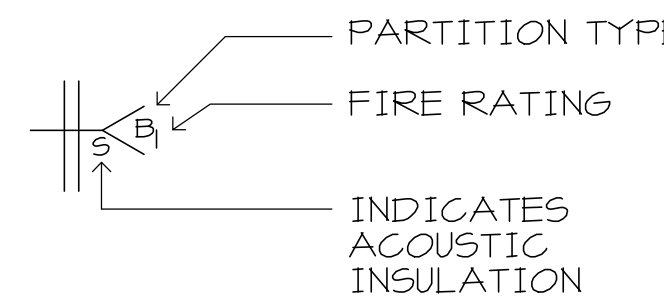
COLUMN NUMBER

Column Grid Line
New Construction

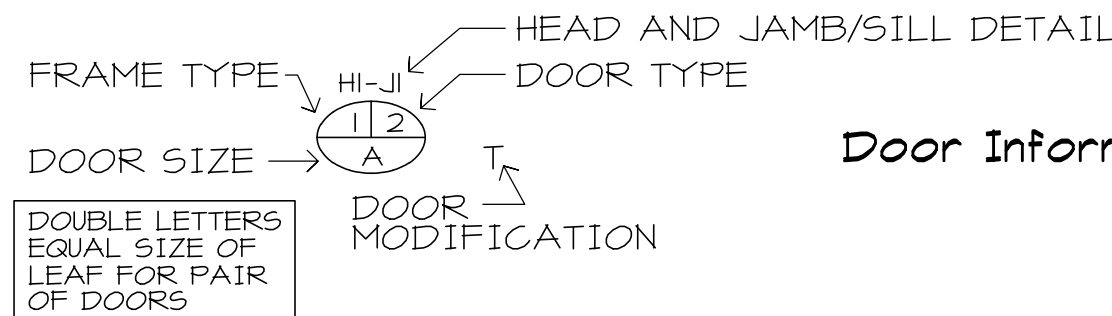


COLUMN NUMBER

Column Grid Line
Existing Construction



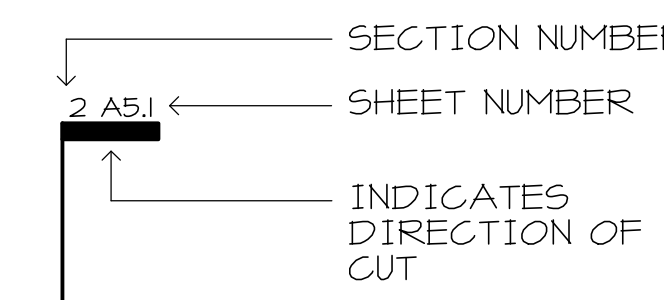
Partition Information



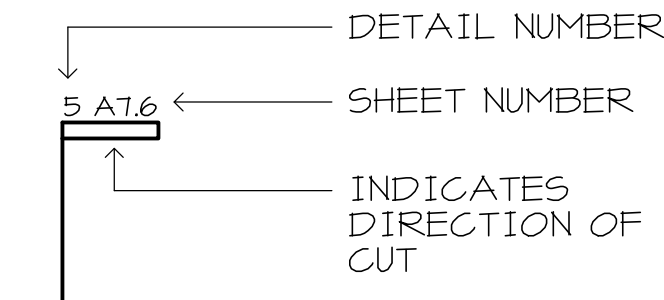
Door Information



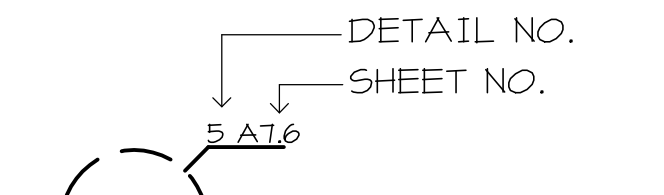
Room Information



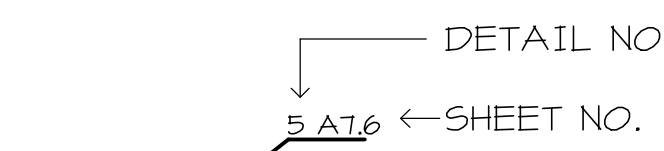
Plan and Vertical
Section Reference



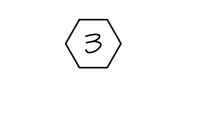
Section Detail
Reference



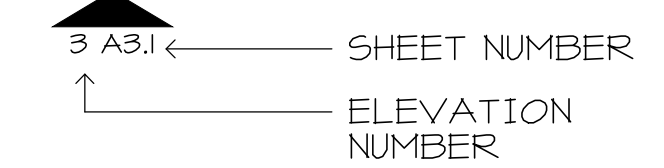
Plan Detail
Reference



Enlarged Plan
Reference



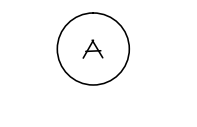
Demolition Symbol



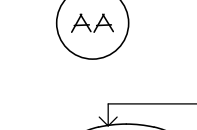
Elevation Symbol



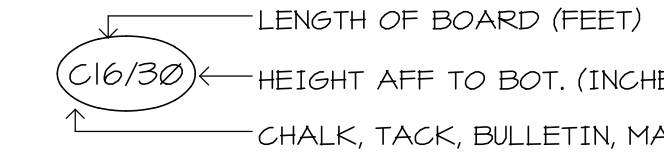
Glass Type



Window Type



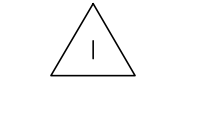
Storefront Type



Chalkboard Type



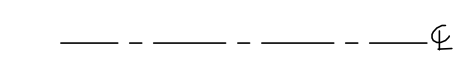
Toilet Accessories



Revision Number



Matchline



Center Line



Plan Spot Elevation



Louver Type

NOTE: THESE ARE STANDARD SYMBOLS AND ALL
SYMBOLS NOTED ON THIS SHEET MAY NOT
APPLY.

PROJECT INFORMATION

PROJECT PHASING DESCRIPTION

PHASE ONE OF THE PROJECT INCLUDES THE CONSTRUCTION OF A NEW TWO-STORY 11,825 SQUARE FOOT DINING AND COMMUNITY LIVING CENTER LOCATED ON THE ROOF OF EXISTING BUILDING 2A AND ADJACENT TO EXISTING BUILDING 2. IN ADDITION, PHASE ONE WILL INCLUDE THE EXTENSION OF THE EXISTING EGRESS LOBBY ON THE BASEMENT LEVEL AT THE URGENT CARE ADMITTING AND WAITING AREA (APPROXIMATELY 5940 SQUARE FEET). THE PHASE ONE SCOPE OF WORK ALSO INCLUDES THE EXTENDING AND RECONFIGURATION OF THE EXISTING EGRESS STAIRWAY IN BUILDING 2A.

PHASE TWO OF THE PROJECT INCLUDES THE RENOVATION OF APPROXIMATELY 3,430 SQUARE FEET OF EXISTING BUILDING 2, CONSISTING OF THE EXISTING SECOND AND THIRD FLOOR PATIENT DINING ROOMS, NURSE STATIONS, MEDICATION STORAGE ROOMS AND ADJACENT SUPPORTING SPACES AT THE COMPLETION OF THE NEW PHASE ONE CONSTRUCTION. THE SCOPE OF WORK ALSO INCLUDES THE REPLACEMENT OF FLOORING IN THE MAIN CORRIDORS AND ELEVATOR LOBBIES OF BOTH FLOORS. PHASE TWO RENOVATION WORK WILL BE SUBDIVIDED INTO ADDITIONAL PHASES ON EACH FLOOR (SEE FLOOR PLANS) TO MINIMIZE INTERRUPTIONS TO HOSPITAL SERVICES.

DESIGN CRITERIA

BUILDING CODE (2009 IBC-BUILDING, STRUCTURAL, PLUMBING AND MECHANICAL)

ELECTRICAL CODE (NEC 2009)

NFPA 101 LIFE SAFETY CODE (LATEST EDITION)

ENERGY CODE (IECC 2009-VIRGINIA USBC)

ACCESSIBILITY CODE (2009 IBC-VIRGINIA USBC)

AMERICANS WITH DISABILITIES ACT (LATEST EDITION)

DEPARTMENT OF VETERANS AFFAIRS FIRE PROTECTION DESIGN MANUAL (FIFTH EDITION, APRIL 2009)

DEPARTMENT OF VETERANS AFFAIRS BARRIER FREE DESIGN GUIDE (PG-18-13, NOVEMBER 2007)

DEPARTMENT OF VETERANS AFFAIRS ARCHITECTURAL DESIGN MANUAL FOR AMBULATORY CARE/OUTPATIENT CLINIC PROJECTS (MAY 2006)

DEPARTMENT OF VETERANS AFFAIRS DESIGN GUIDE FOR AMBULATORY CARE (HOSPITAL BASED-REVISED JANUARY 2009)

CODE INFORMATION

BUILDING TYPE: HOSPITAL DINING FACILITY (NEW ADDITION)
PATIENT AND ADMINISTRATIVE SUPPORT (RENOVATED AREAS)

NFPA CONSTRUCTION TYPE: TYPE I (332)

NFPA 101 OCCUPANCY CLASSIFICATIONS: MIXED OCCUPANCIES (NON-SEPARATED)
MOST RESTRICTIVE OCCUPANCY-HEALTH CARE
RENOVATED AREAS-HEALTH CARE
NEW ADDITION-ASSEMBLY

IBC CONSTRUCTION TYPE: TYPE I-A

IBC OCCUPANCY CLASSIFICATION: NON-SEPARATED, MIXED USE OCCUPANCY (1-2, A)
MOST RESTRICTIVE OCCUPANCY-INSTITUTIONAL (1-2)
RENOVATED AREAS-INSTITUTIONAL
NEW ADDITION-ASSEMBLY

BUILDING FULLY SPRINKLED: YES
EXITS PER FLOOR: 2
TRAVEL DISTANCE: I-2 200 FT. (IBC) 200 FT. (NFPA)
A 250 FT. (WITH SPRINKLER SYSTEM)

ALLOWABLE AREA (TABLE 503):
OCCUPANCY GROUP A (CONSTRUCTION TYPE I-A) UNLIMITED S.F. PER FLOOR
UNLIMITED STORIES
UNLIMITED HEIGHT

OCCUPANCY GROUP I-2 (CONSTRUCTION TYPE I-A) UNLIMITED S.F. PER FLOOR
UNLIMITED STORIES
UNLIMITED HEIGHT

FIRE RESISTANCE REQUIREMENTS

PRIMARY STRUCTURAL FRAME	3 HR.	UL X752
EXTERIOR BEARING WALLS	N/A	N/A
INTERIOR BEARING WALLS	N/A	N/A
INTERIOR BEARING WALLS (SUPPORTING ROOF ONLY)	N/A	N/A
STAIR ENCLOSURES	2 HRS.	AS PER 2009 IBC
SHAFT WALLS (INCLUDING MECH. CHASES)	N/A	N/A
EXIT ACCESS CORRIDORS (NO RATING REQUIRED WITH AUTOMATIC SPRINKLER SYSTEM)	0	N/A
FLOOR CONSTRUCTION	2 HR.	UL D916
ROOF CONSTRUCTION	1-1/2 HR.	UL F526
FIRE STOPPING AT WALL CAVITIES	1 HR.	UL 2079
STORAGE ROOMS (GREATER THAN 250 S.F.)	1 HR.	UL 465

PROJECT STATISTICS

SITE LOCATION: DEPARTMENT OF VETERANS AFFAIRS MEDICAL CENTER
1970 ROANOKE BOULEVARD
ROANOKE, VIRGINIA 24153

NUMBER OF FLOORS BELOW GRADE: 1
NUMBER OF FLOORS ABOVE GRADE: 3
PARKING SPACES PROVIDED: N/A
ACCESSIBLE PARKING SPACES PROVIDED: N/A

SQUARE FOOTAGE	NEW CONSTRUCTION	RENOVATED CONSTRUCTION
THIRD FLOOR	5,473 S.F. (PHASE ONE)	1,672 S.F. (PHASE TWO)
SECOND FLOOR	6,352 S.F. (PHASE ONE)	1,750 S.F. (PHASE TWO)
BASEMENT FLOOR		590 S.F. (PHASE ONE)
TOTAL	11,825 S.F.	4,020 S.F.

Drawing Title:
ARCHITECTURAL SYMBOLS,
ABBREVIATIONS AND
PROJECT INFORMATION

Project Title:
Patient Dining Area CLC
VA Medical Center
SFCS Commission Number: 6527.00

Project Number:
658-307
Building Number(s):
2/2A

Approved: Chief of Facility Management Services

Location:
Salem, Virginia

Drawing Number:

Approved: Medical Center Director

Date:

Checked:

Drawn:

A0.0

Dwg 2 of 65

Office of
Construction
and Facilities
Management

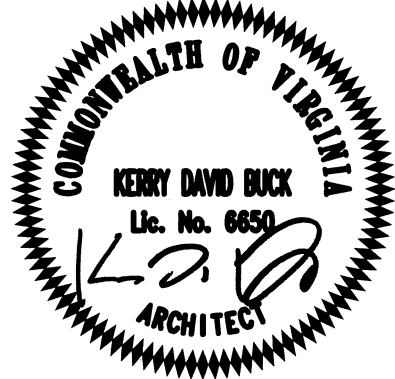


ARCHITECT/ENGINEERS:

SFCS

SFCS Inc. • 305 South Jefferson Street
Roanoke, Virginia 24011.2003
540.344.6664 • Fax 540.343.6925
www.sfcs.com

Architecture
Engineering
Planning
Interiors



Approved: Energy Engineer

CONSTRUCTION
DOCUMENTS

Approved: Infection Control

Approved: Service Chief

Approved: Safety Manager

Approved: Chief of Staff

Approved: GEMS Coordinator

Approved: Associate Director