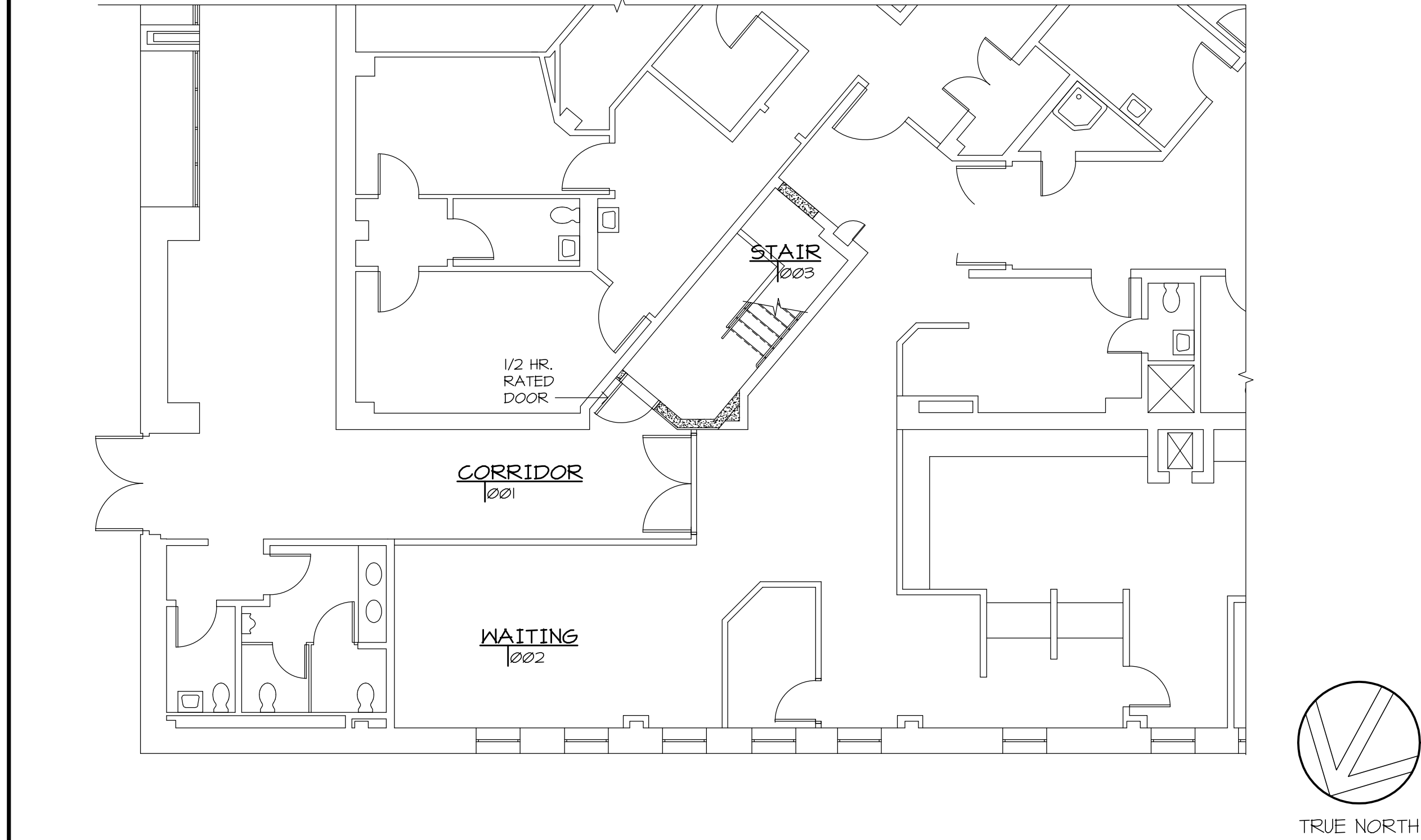
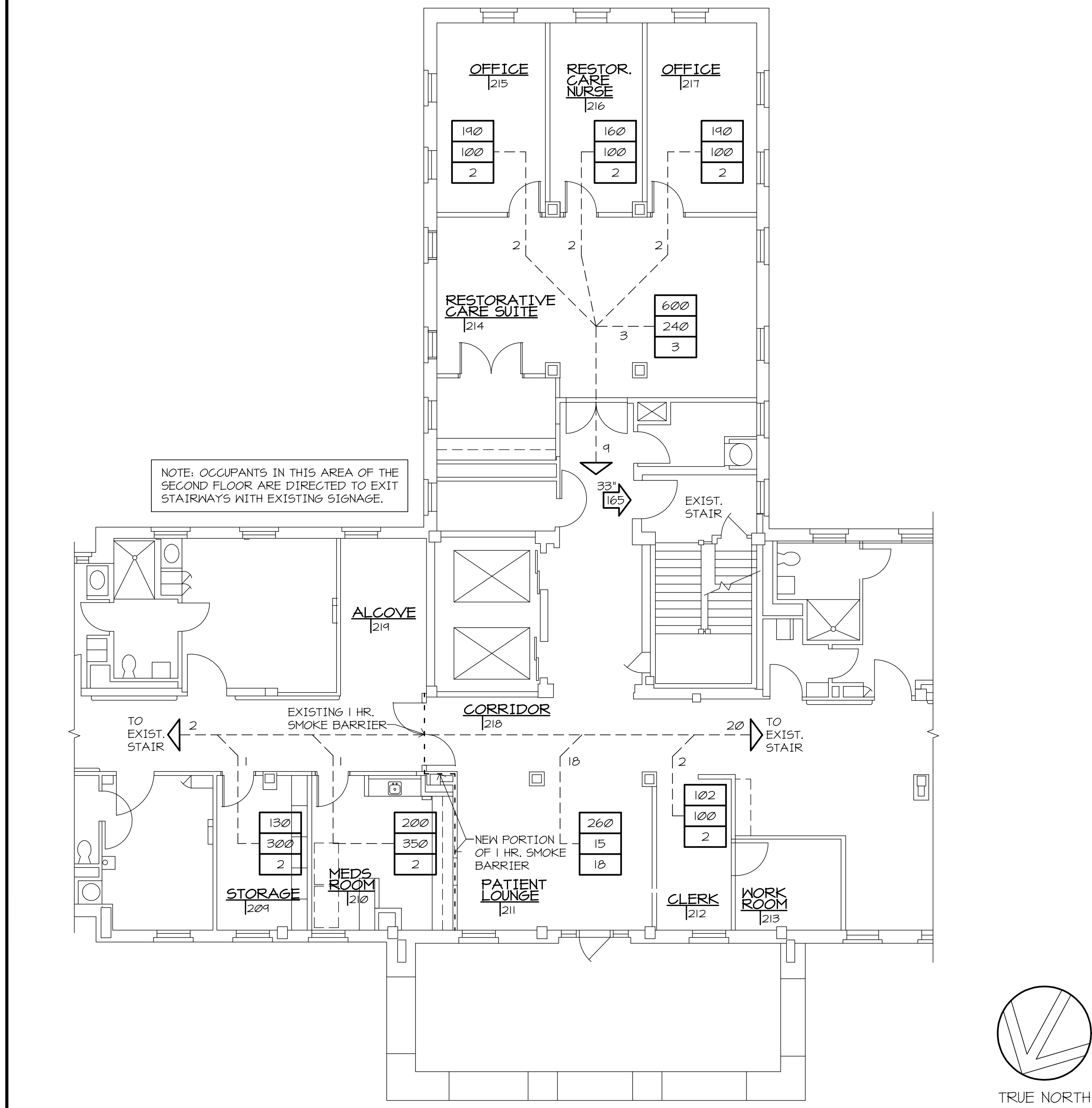


three inches = one foot  
one inch = one foot  
one and one half inches = one foot  
three quarters inch = one foot  
one half inch = one foot  
three eighths inch = one foot  
one quarter inch = one foot  
one eighth inch = one foot



PARTIAL EXIST. BASEMENT FLR. FIRE PROTECTION PLAN 1/8" = 1'-0" 3



PARTIAL EXIST. SECOND FLOOR FIRE PROTECTION PLAN 1/8" = 1'-0" 2

**FIRE PROTECTION LEGEND**

- 1 HR. FIRE RATED WALL
- 2 HR. FIRE RATED WALL
- 3 HR. FIRE RATED WALL
- 1 HR. RATED SMOKE BARRIER

**EGRESS LEGEND**

**OCCUPANT LOAD CALCULATIONS**

3000	FLOOR AREA IN S.F.
100	ALLOWABLE S.F. PER PERSON
30	OCCUPANT LOAD

**MEANS OF EGRESS**

- NUMBER OF OCCUPANTS ALONG EGRESS PATH
- PATH OF EGRESS

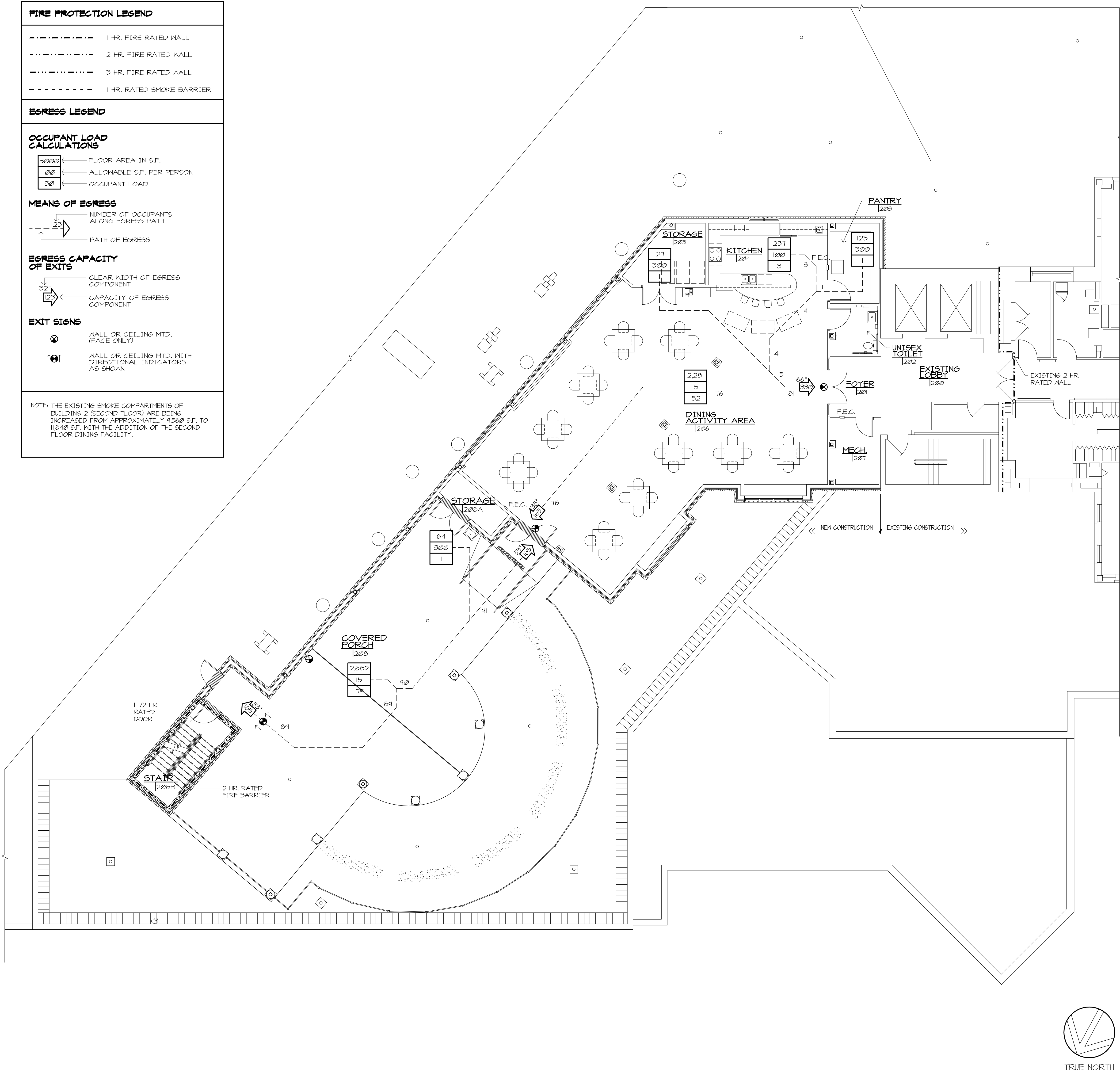
**EGRESS CAPACITY OF EXITS**

- CLEAR WIDTH OF EGRESS COMPONENT
- CAPACITY OF EGRESS COMPONENT

**EXIT SIGNS**

- WALL OR CEILING MTD. (FACE ONLY)
- WALL OR CEILING MTD. WITH DIRECTIONAL INDICATORS AS SHOWN

NOTE: THE EXISTING SMOKE COMPARTMENTS OF BUILDING 2 (SECOND FLOOR) ARE BEING INCREASED FROM APPROXIMATELY 4350 S.F. TO 11840 S.F. WITH THE ADDITION OF THE SECOND FLOOR DINING FACILITY.



SECOND FLOOR NEW ADDITION FIRE PROTECTION PLAN 1/8" = 1'-0" 1

ARCHITECT/ENGINEERS: <b>SFCs</b> SFCs Inc. • 305 South Jefferson Street Roanoke, Virginia 24011.2003 540.344.6664 • Fax 540.343.6925 www.sfc.com			Approved Energy Engineer	Approved Infection Control	Approved Service Chief	Drawing Title: <b>BASEMENT AND SECOND FLOOR FIRE PROTECTION PLANS</b>	Project Title: <b>Patient Dining Area CLC VA Medical Center</b> SFCs Commission Number: 6527.00		Project Number: <b>658-307</b>	Office of Construction and Facilities Management 
Revisions:			CONSTRUCTION DOCUMENTS		Approved Safety Manager	Approved Chief of Staff	Approved Chief of Facility Management Services	Location: <b>Salem, Virginia</b>	Building Number(s): <b>2/2A</b>	
Date:				Approved GEMS Coordinator	Approved Associate Director	Approved Medical Center Director	Date: <b>03/15/12</b>	Checked: <b>DPJ</b>	Drawn: <b>ABC</b>	Dwg. 4 of 65