

A

B

C

D

E

F

A

B

C

D

E

F

FINISH LEGEND

ABBREVIATIONS					
ACT	Acoustical Ceiling Tile	EPXY	Epoxy	RB	Rubber Base
BR	Bumper Rail Wall Guard	EXIST	Existing	RST	Rubber Stair Tread
CPT	Carpet	GWB	Gypsum Wall Board	SVF	Sheet Vinyl Flooring
CR	Chair Rail	ICB	Integral Cove Base	VCT	Vinyl Composition Tile
CT	Ceramic Tile	PL	Plastic Laminate	VPF	Vinyl Plank Flooring
DS	Divider Strip	PNT	Paint	VNG	Vinyl Wallcovering
				WD	Wood

Code	Material	Manufacturer	Pattern	Color	Specifications	Remarks

Flooring						
CPT-1	Carpet Tile	Lees	Spring Flourish GL003	Grey Down 100		Commons
CPT-2	Carpet Tile	Lees	Autumn Harvest GL002	Grey Down 100		Offices
VPF-1	Vinyl Plank Floor	Amico	Wood	Cherry ARCH1000		General Woodlook
VPF-2	Vinyl Plank Floor	Amico	Wood	Light Cherry ARCH1000		Accent Woodlook
LVT-1	Luxury Vinyl Tile	Amico	Stone	Jana Yellow AROSJA75		Stone/ Kitchens
SV-1	Sheet Vinyl	Teknoflor	Granite II	B612		Back of house
RUB-1	Rubber Tile	Johnsonite	Hammered	41 Sea Breeze		Stair landing
CT-1	Ceramic Tile	Crossville	Bluestone	AV202 Arizona Brown/HON	12x12	Toilets
CT-2	Ceramic Tile	Crossville	Plan	PNT01 Sand	12x24 (herringbone pattern)	Covered Porch

Wall Base & Accessories						
RB-1	Rubber Base	Johnsonite	Millwork Profile-Mandalay	01 Snow White	6" high	Commons
RB-2	Rubber Base	Johnsonite	Traditional	09 Clay	4" high	Back of house & offices
RB-3	Rubber Base	Johnsonite	Traditional	41 Sea Breeze	4" high	Stair landing
CTB-1	Ceramic Tile Base	Crossville	Bluestone	AV202 Arizona Brown/HON		Toilets
STD-1	Stair Tread	Johnsonite	Hammered	41 Sea Breeze		Tread & Risers

Wall Finishes-Wallcovering/Mahscot/Ceramic Tile/Paint						
WP-1	Wall Protection	Koragard- Traffic Patterns	Gridlock scenic paint	TP-6521-85	transitions to match	Dining/Activity
WP-2	Wall Protection	Koragard- Traffic Patterns	Tiburon Shagreen Max	TP-1421-35	transitions to match	Corridor
CWT-1	Ceramic Wall Tile	American Olean	Infusion	Belge Wall 1FT1	6x20	Toilets Wet Wall
CWT-2	Ceramic Wall Tile	Voguebay (contact international tile & marble)	Bluetooth marble mosaic	Emperador	Mosaic	Toilets Accent
CWT-3	Ceramic Wall Tile	Architectural (contact international tile & marble)	Cadence Collection (glass /mosaic)	Harmony 16 Blends	1-1/4"x1-1/4" Driftwood	Kitchen backsplashes
PNT-1	Paint	Sherwin Williams	Macadamia	SW6142		Dining/Activity
PNT-2	Paint	Benjamin Moore	Bone White	I-03		Trim
PNT-3	Paint	Sherwin Williams	Silvermist	SW7621		Corridor above CR
PNT-4	Paint	Sherwin Williams	Softer tan	SW6141		Back of house
PNT-5	Paint	Sherwin Williams	LemonVerbena	SW7726		Accent (green)
PNT-6	Paint	Sherwin Williams	TBD	TBD		Accent (orange)
PNT-7	Paint	Benjamin Moore	Rushing River	1574		Accent (blue)

Cabinetry & Casework						
PL-1	Plastic Laminate	Wileonart	Luna Crest	1052K-35		Toilet Support
GZ-1	Quartz	Zodiaq		Mossy Green		Kitchens
SS-1	Solid Surface	Corian		Pine		Reception
SS-2	Solid Surface	Corian		Hazelnut		Toilets
CAB-1	Cabinet	Merillat	Classic Series / Sommerston Hill	Sable on Maple		Kitchen (Res. Casework)
ST-1	Stain	To match Merrillat		Sable on Maple		Reception / Arch. millwork

Ceiling						
ACT-1	Acoustical Ceiling Tile	Armstrong or equal	Ultima		2x2 tegular	Commons
ACT-2	Acoustical Ceiling Tile	Armstrong or equal	Dune		2x2 lay-in	Back of house

Misc Items						
FAB-1	Fabric	Robert Allen	TBD	TBD		Dining Bench Cushion
FAB-2	Fabric	Robert Allen	Circle Rings	Birch	Comice Arch to select style	Dining Window treatment
FAB-3	Fabric	Maharam	Play 901871	005 Agate		Reception Tackboard (frameless)

FINISH SCHEDULE

ROOM NO.	ROOM NAME	FLOOR	BASE	CHRL	CRVN	WALL				CEILING		REMARKS
						NORTH	SOUTH	EAST	WEST	MATERIAL	FINISH	
BASEMENT												
001	CORRIDOR		VPF-1	RB-1	PNT-2	PNT-2	WP-2/PNT-3	WP-2/PNT-3	WP-2/PNT-3	WP-2/PNT-3		
002	WAITING		VPF-1 / LVT-1	RB-1		PNT-2	PNT-1	PNT-5	PNT-1	PNT-1		NOTE 1
003	RECEPTION		CPT-2	RB-1	PNT-2	PNT-2	PNT-1	PNT-1	PNT-5	PNT-1		NOTE 1
SECOND FLOOR												
200	EXISTING LOBBY		LVT-1 / VPF-1&2	RB-1	PNT-2	PNT-2	WP-2/PNT-3	WP-2/PNT-3	WP-2/PNT-3	WP-2/PNT-3		
201	FOYER		VPF-1	RB-1	PNT-2	PNT-2	WP-2/PNT-3	WP-2/PNT-3	WP-2/PNT-3	WP-2/PNT-3		
202	UNISEX TOILET		CT-1	CTB-1/ CWT-1&2			PNT-4	PNT-4	PNT-4	CWT-1 & 2		NOTE 2
203	STORAGE		SV-1	RB-2			PNT-4	PNT-4	PNT-4	PNT-4		
204	KITCHEN		LVT-1	RB-1	PNT-2	PNT-2	PNT-2	CWT-4/PNT-2	CWT-4/PNT-2	PNT-2		NOTE 3
205	STORAGE		SV-1	RB-2			PNT-4	PNT-4	PNT-4	PNT-4		
206	DINING/ACTIVITY		LVT-1 / VPF-1&2	RB-1	PNT-2	PNT-2	WP-1/PNT-1	WP-1/PNT-1	WP-1/PNT-1	WP-1/PNT-1		NOTE 1
207	MECH		SV-1	RB-2			PNT-4	PNT-4	PNT-4	PNT-4		
208	COVERED PORCH		CT-2									
208A	STORAGE		CT-2				PNT-4	PNT-4	PNT-4	PNT-4		
208B	STAIR		STD-1	RB-3			PNT-4	PNT-4	PNT-4	PNT-4		NOTE 4
209	STORAGE		SV-1	RB-2			PNT-4	PNT-4	PNT-4	PNT-4		
210	MED ROOM		SV-1	RB-2			PNT-4	PNT-4	PNT-4	PNT-4		
211	PATIENT LOUNGE		CPT-1	RB-1		PNT-2	PNT-5	PNT-5	PNT-5	PNT-5		
212	CLERK		VPF-1	RB-1		PNT-2	PNT-3	PNT-3	PNT-3	PNT-3		
213	WORK ROOM		CPT-2	RB-2			PNT-1	PNT-1	PNT-1	PNT-1		
214	RES. CARE SUITE		VPF-1	RB-1		PNT-2	PNT-1	PNT-7	PNT-1	PNT-1		NOTE 1
215	OFFICE		CPT-2	RB-3			PNT-1	PNT-1	PNT-1	PNT-1		
216	RES. CARE NURSE		CPT-2	RB-3			PNT-1	PNT-1	PNT-1	PNT-1		
217	OFFICE		CPT-2	RB-2			PNT-1	PNT-1	PNT-1	PNT-1		
218	CORRIDOR		VPF-1	RB-1	PNT-2	PNT-2	WP-2/PNT-3	WP-2/PNT-3	WP-2/PNT-3	WP-2/PNT-3		
219	ALCOVE		VPF-1	RB-1	PNT-2	PNT-2	WP-2/PNT-3	WP-2/PNT-3	WP-2/PNT-3	WP-2/PNT-3		
220	CORRIDOR		VPF-1	RB-1	PNT-2	PNT-2	WP-2/PNT-3	WP-2/PNT-3	WP-2/PNT-3	WP-2/PNT-3		
221	ROOM		CPT-1	RB-1		PNT-2	PNT-6	PNT-6	PNT-6	PNT-6		
222	CORRIDOR		VPF-1 & 2	RB-1	PNT-2	PNT-2	WP-2/PNT-3	WP-2/PNT-3	WP-2/PNT-3	WP-2/PNT-3		NOTE 1
223	CORRIDOR		VPF-1	RB-1	PNT-2	PNT-2	WP-2/PNT-3	WP-2/PNT-3	WP-2/PNT-3	WP-2/PNT-3		
224	ROOM		CPT-1	RB-1		PNT-2	PNT-3	PNT-3	PNT-3	PNT-3		
THIRD FLOOR												
300	EXISTING LOBBY		LVT-1 / VPF-1&2	RB-1	PNT-2	PNT-2	WP-2/PNT-3	WP-2/PNT-3	WP-2/PNT-3	WP-2/PNT-3		
301	FOYER		VPF-1	RB-1	PNT-2	PNT-2	WP-2/PNT-3	WP-2/PNT-3	WP-2/PNT-3	WP-2/PNT-3		
302	UNISEX TOILET		CT-1	CTB-1/ CWT-1&2			PNT-4	PNT-4	PNT-4	CWT-1 & 2		NOTE 2
303	STORAGE		SV-1	RB-2			PNT-4	PNT-4	PNT-4	PNT-4		
304	KITCHEN		LVT-1	RB-1	PNT-2	PNT-2	PNT-2	CWT-4/PNT-2	CWT-4/PNT-2	PNT-2		NOTE 3
305	STORAGE		SV-1	RB-2			PNT-4	PNT-4	PNT-4	PNT-4		
306	DINING/ACTIVITY		LVT-1 / VPF-1&2	RB-1	PNT-2	PNT-2	WP-1/PNT-1	WP-1/PNT-1	WP-1/PNT-1	WP-1/PNT-1		NOTE 1
307	MECH		SV-1	RB-2			PNT-4	PNT-4	PNT-4	PNT-4		
308	COVERED PORCH		CT-2									
308A	STORAGE		CT-2				PNT-4	PNT-4	PNT-4	PNT-4		
308B	STAIR		STD-1	RB-3			PNT-4	PNT-4	PNT-4	PNT-4		NOTE 4
309	STORAGE		SV-1	RB-2			PNT-4	PNT-4	PNT-4	PNT-4		
310	MED ROOM		SV-1	RB-2			PNT-4	PNT-4	PNT-4	PNT-4		
311	RECEPTION		CPT-1	RB-1		PNT-2	PNT-5	PNT-5	PNT-5	PNT-5		
312	HC TOILET		CT-1	CTB-1			PNT-7	PNT-7	PNT-7	PNT-7		
313	CORRIDOR		VPF-1	RB-1	PNT-2	PNT-2	WP-2/PNT-3	WP-2/PNT-3	WP-2/PNT-3	WP-2/PNT-3		
314	STORAGE		SV-1	RB-2			PNT-4	PNT-4	PNT-4	PNT-4		
315	OFFICE		CPT-2	RB-2			PNT-6	PNT-1	PNT-1	PNT-1		NOTE 1
316	OFFICE		CPT-2	RB-2			PNT-1	PNT-6	PNT-1	PNT-1		NOTE 1
317	CONSERVATIVE		GPT-1	RB-1			PNT-3	PNT-3	PNT-3	PNT-3		

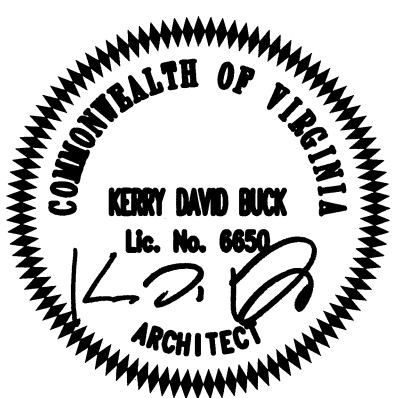
Revisions	Date

ARCHITECT/ENGINEERS:

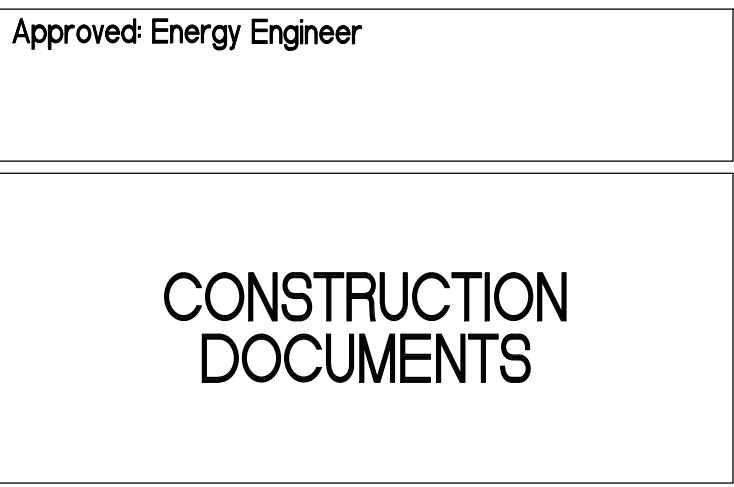
SFCS

SFCS Inc. • 305 South Jefferson Street
Roanoke, Virginia 24011.2003
540.344.6664 • Fax 540.343.6925
www.sfcs.com

Architecture
Engineering
Planning
Interiors



Approved: Energy Engineer



Approved: Infection Control

Approved: Safety Manager

Approved: GEMS Coordinator

Approved: Service Chief

Approved: Chief of Staff

Approved: Associate Director

Drawing Title:

FINISH LEGEND
AND SCHEDULE

Approved: Chief of Facility Management Services

Approved: Medical Center Director

Project Title:

Patient Dining Area CLC
VA Medical Center
SFCS Commission Number: 6527.00

Location:

Salem, Virginia

Date:

03/15/12

Checked:

-

Drawn:

-

Project Number:
658-307

Building Number(s):
2/2A

Drawing Number:

A4.3

Dwg. 20 of 65

Office of
Construction
and Facilities
Management

