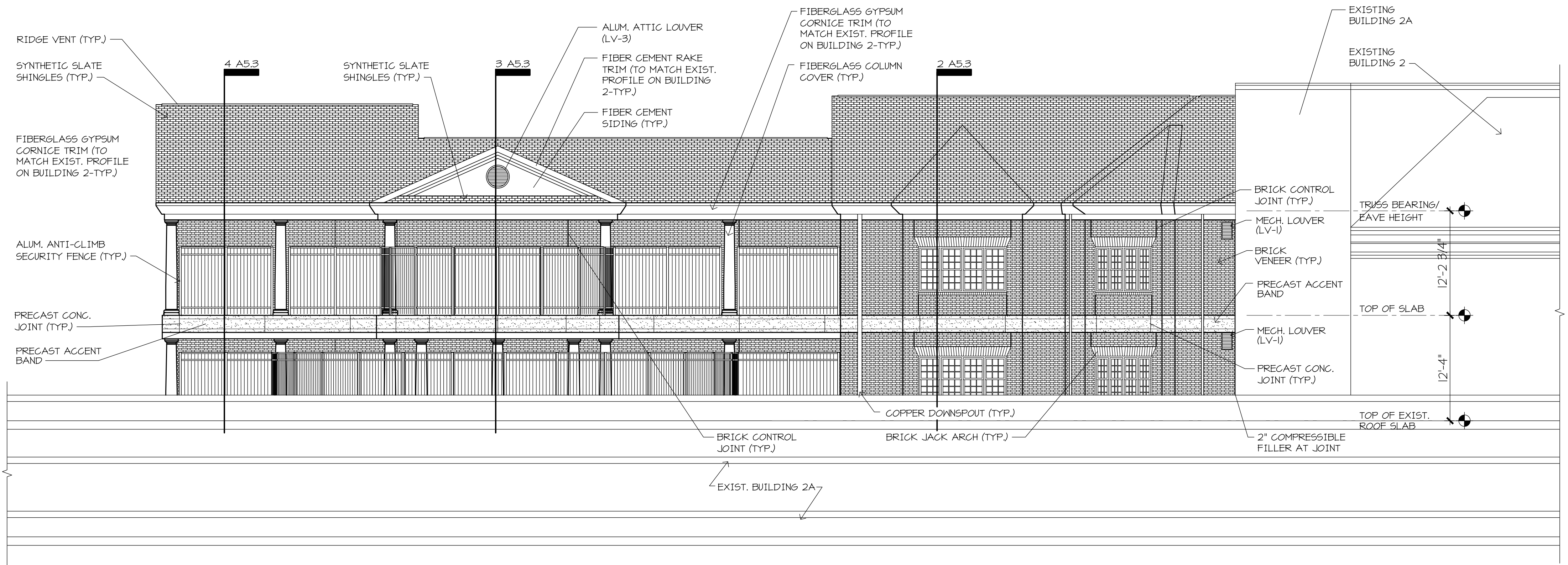


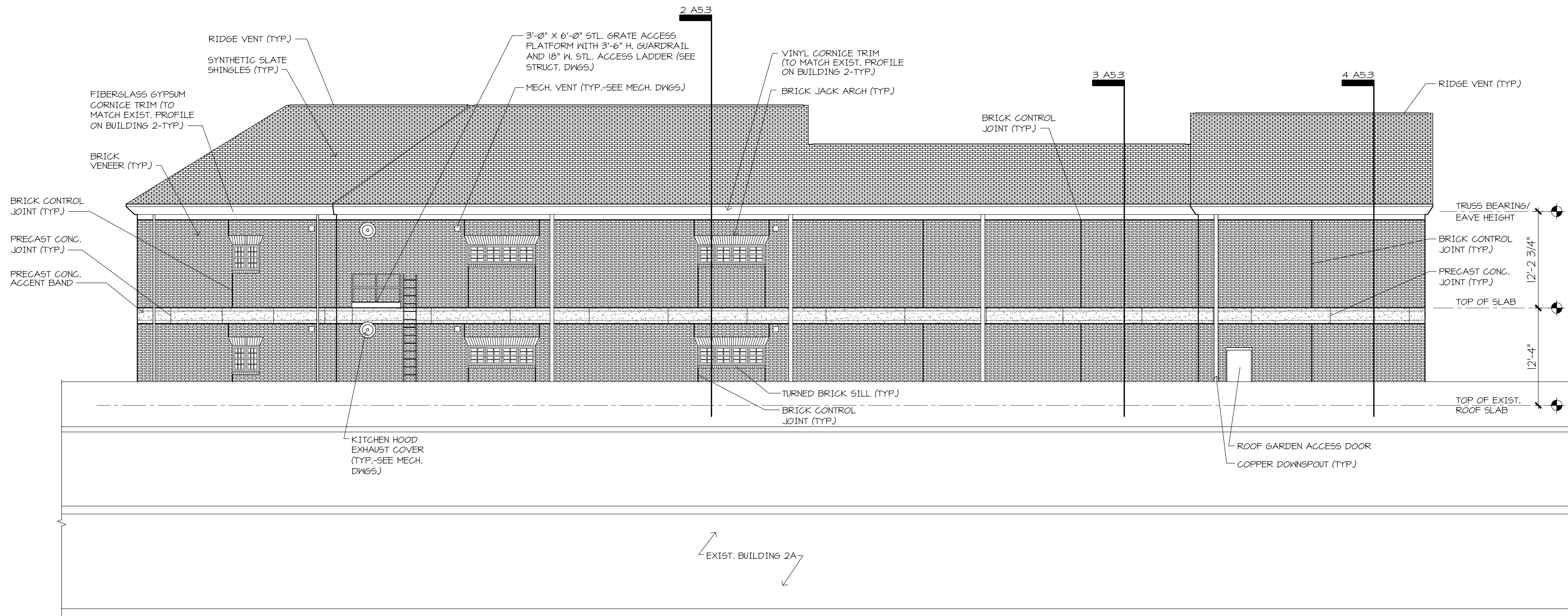
three inches = one foot
one and one half inches = one foot
one inch = one foot
three quarters inch = one foot
one half inch = one foot
three eighths inch = one foot
one quarter inch = one foot
one eighth inch = one foot



WEST ELEVATION

1/8" = 1'-0"

2



EAST ELEVATION

1/8" = 1'-0"

NOT USED

SCALE

3

ARCHITECT/ENGINEERS:

SFCS

SFCS Inc. • 305 South Jefferson Street
Roanoke, Virginia 24011.2003
540.344.6664 • Fax 540.343.6925
www.sfcs.com

Architecture
Engineering
Planning
Interiors



Approved: Energy Engineer

CONSTRUCTION
DOCUMENTS

Approved: Infection Control

Approved: Safety Manager

Approved: GEMS Coordinator

Approved: Service Chief

Approved: Chief of Staff

Approved: Associate Director

Drawing Title:
**EXTERIOR
ELEVATIONS**

Approved: Chief of Facility Management Services

Approved: Medical Center Director

Project Title:
**Patient Dining Area CLC
VA Medical Center**
SFCS Commission Number: 6527.00

Location:
Salem, Virginia

Date:
03/15/12

Checked:
DPJ

Drawn:
ABC

Project Number:
658-307

Building Number(s):
2/2A

Drawing Number:
A5.2

Dwg. 22 of 65

Office of
Construction
and Facilities
Management

Department of
Veterans Affairs