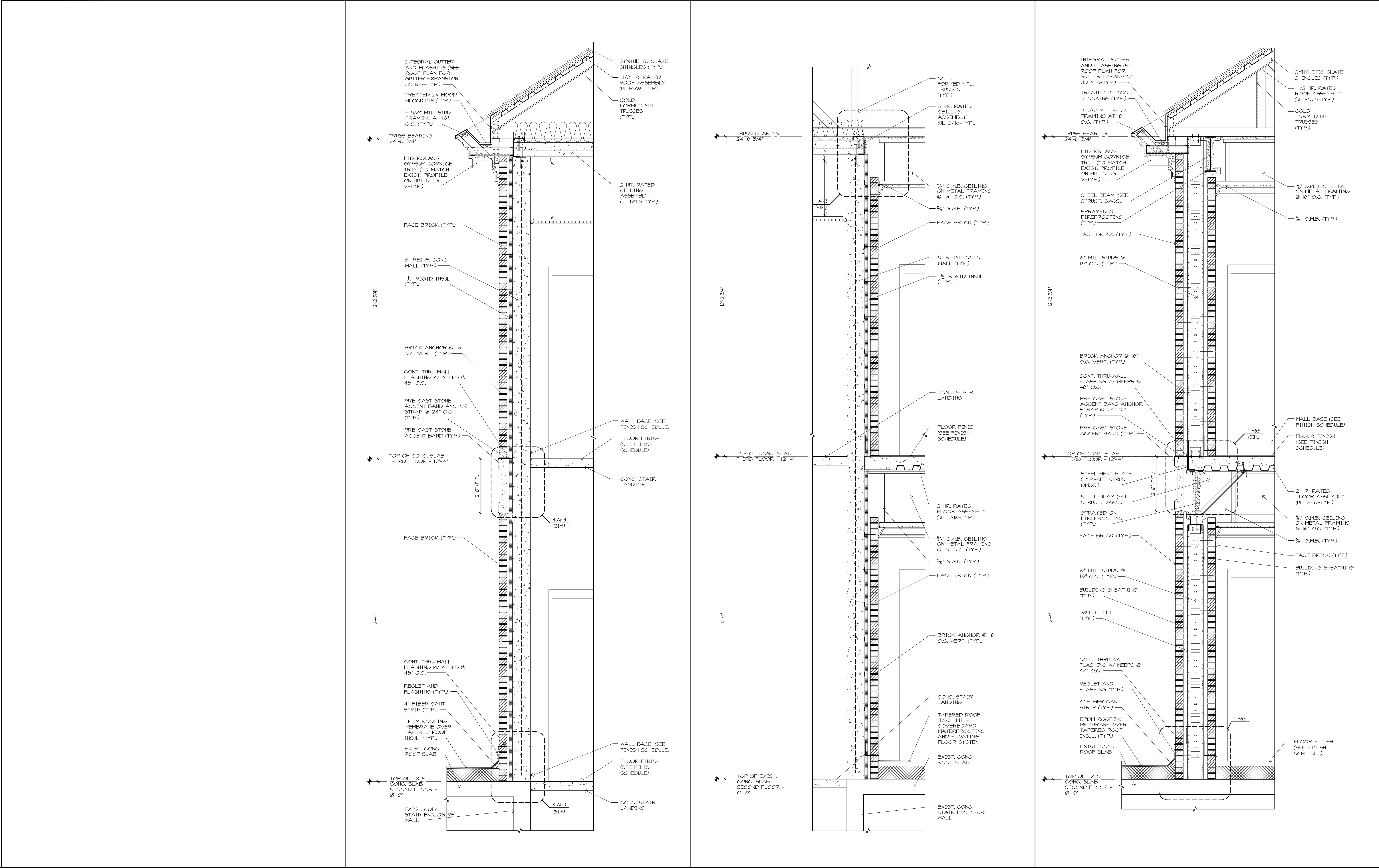


three inches = one foot
one and one half inches = one foot
one inch = one foot
three quarters inch = one foot
one half inch = one foot
three eighths inch = one foot
one quarter inch = one foot
one eighth inch = one foot



NOT USED		SCALE 4	WALL SECTION	3/4" = 1'-0"	3	WALL SECTION	3/4" = 1'-0"	2	WALL SECTION	3/4" = 1'-0"	
ARCHITECT/ENGINEERS:		Approved Energy Engineer		Approved Infection Control		Approved Service Chief		Drawing Title:		Project Title:	
SFCs		CONSTRUCTION DOCUMENTS		Approved Safety Manager		Approved Chief of Staff		WALL SECTIONS		Patient Dining Area CLC	
SFCs Inc. • 305 South Jefferson Street				Approved GEMS Coordinator		Approved Associate Director		Approved Chief of Facility Management Services		VA Medical Center	
Roanoke, Virginia 24011.2003								Approved Medical Center Director		SFCs Commission Number: 6527.00	
540.344.6664 • Fax 540.343.6925								Location:		Salem, Virginia	
www.sfc.com								Date:		Checked:	
Revisions:								03/15/12		DPJ	
Date:								ABC		A6.2	
								Dwg. 25 of 65		Office of Construction and Facilities Management	
										Department of Veterans Affairs	