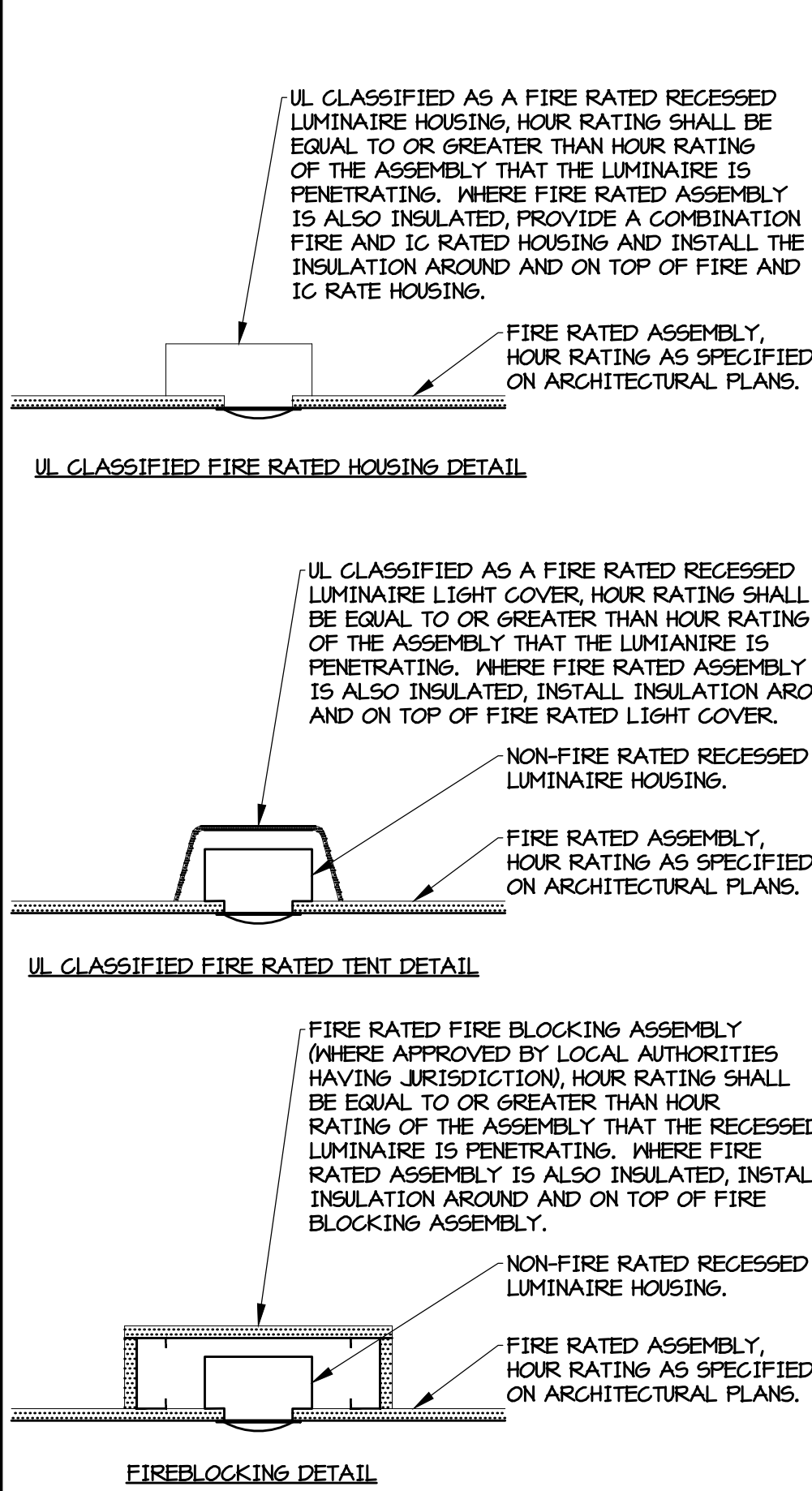
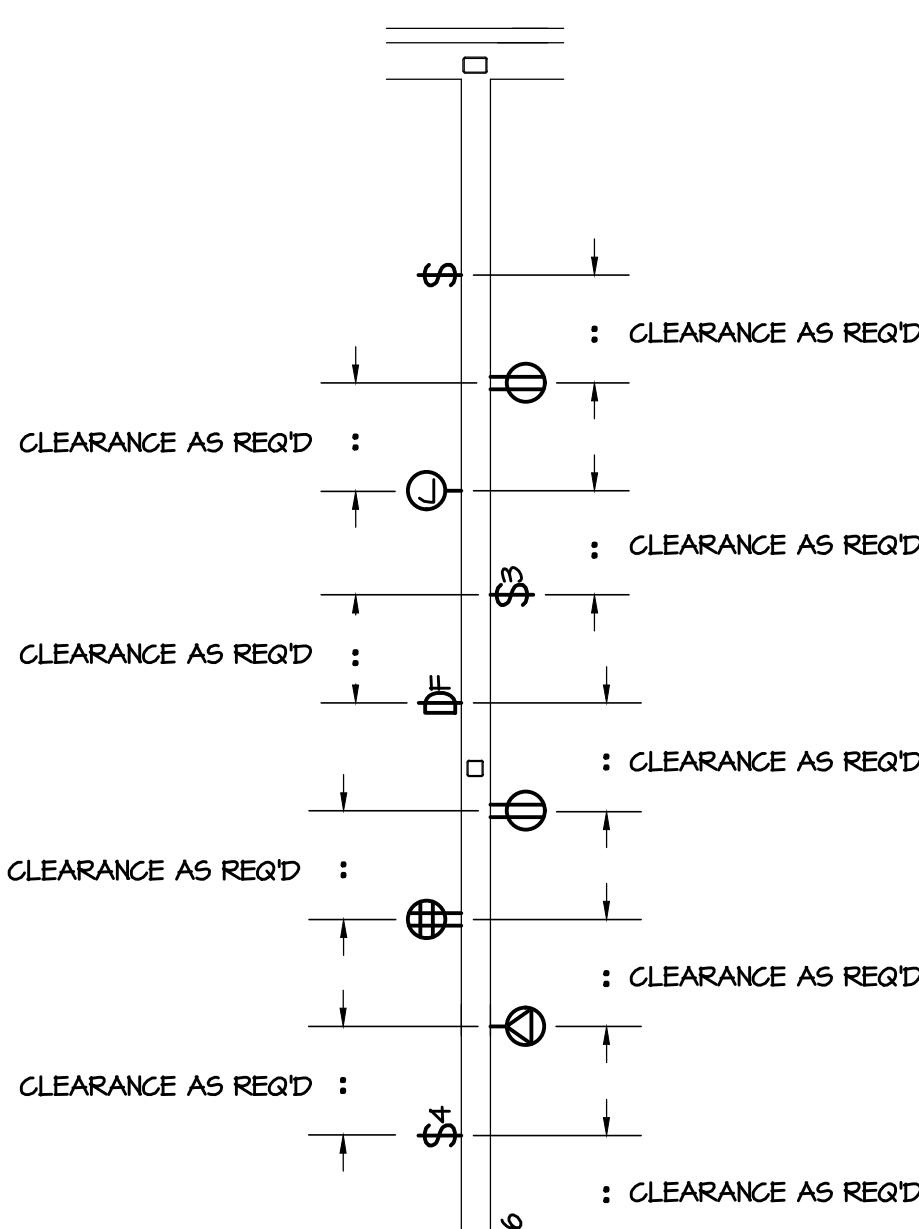


three inches = one foot
one and one half inches = one foot
one inch = one foot
one half inch = one foot
three quarters inch = one foot
one quarter inch = one foot
one eighth inch = one foot
one sixteenth inch = one foot



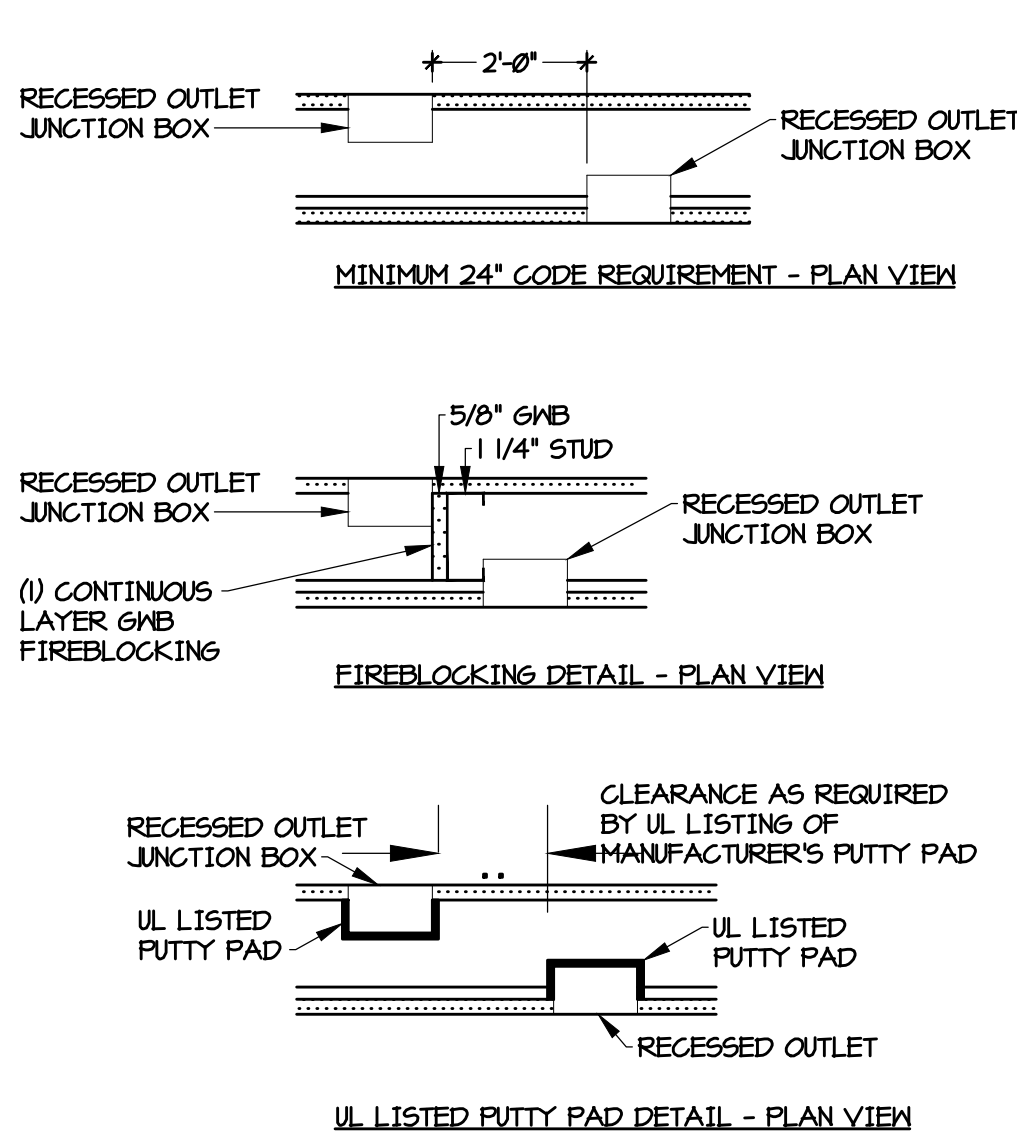
DETAILS FOR LUMINAIRE PENETRATIONS IN FIRE RATED ASSEMBLIES

NOTE: RECESSED LUMINAIRES IN FIRE-RESISTANCE-RATED HORIZONTAL ASSEMBLIES ARE MEMBRANE PENETRATIONS AND MUST COMPLY WITH 712.4.1.1.1 OR 712.4.1.1.2 OF THE 2006 IBC CODE. RECESSED LUMINAIRES SHALL BE INSTALLED SUCH THAT THE REQUIRED FIRE RESISTANCE WILL NOT BE REDUCED.



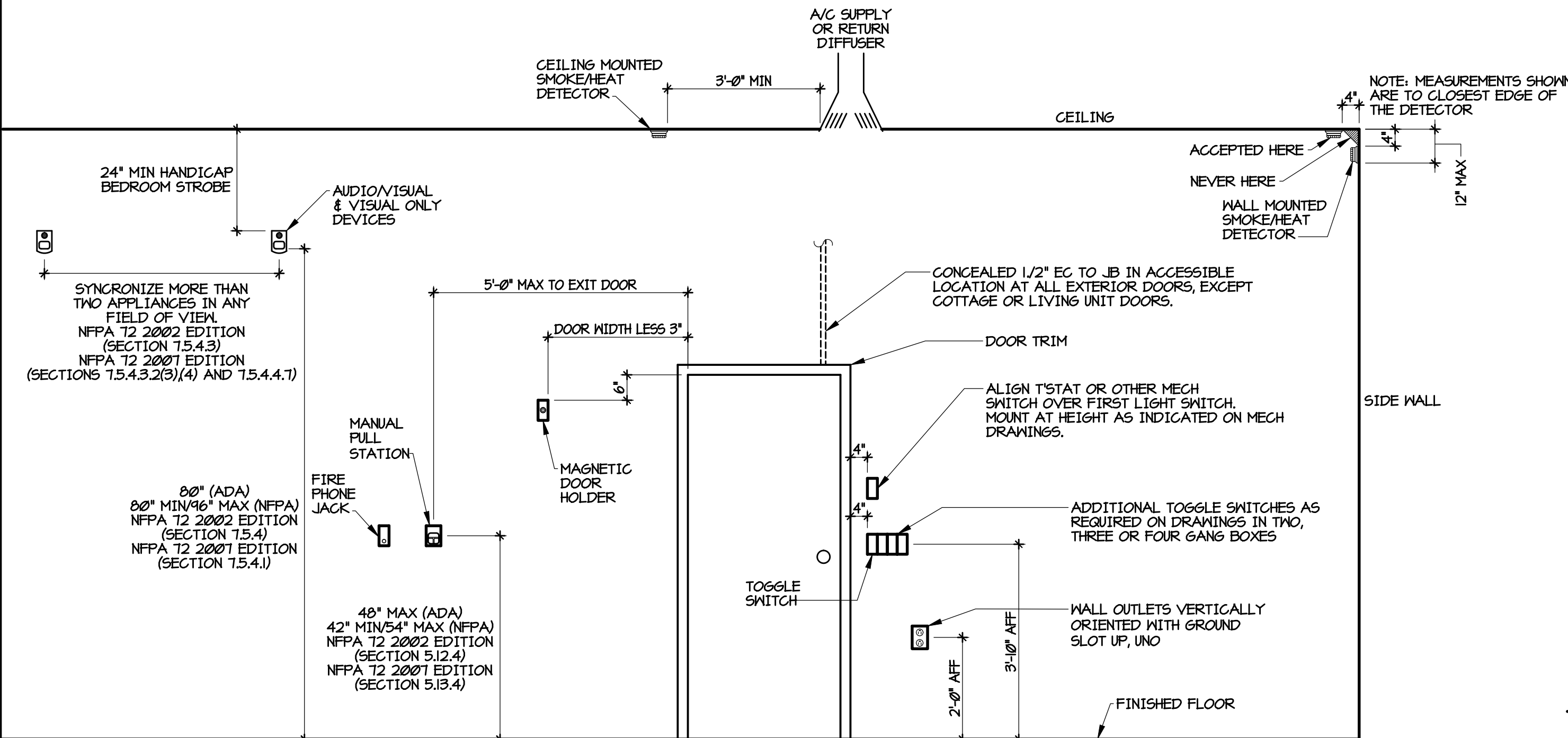
PARTIAL FIRE OR ACOUSTICAL RATED PARTITION

NOTE: TYPICAL OF RECESSED WALL MOUNTED ELECTRICAL DEVICES LOCATED AT FIRE AND ACOUSTICAL RATED PARTITIONS. REFER TO 'DETAILS FOR MEMBRANE PENETRATIONS IN FIRE & ACOUSTICAL RATED WALLS' ON THIS DRAWING AND TO SPECIFICATIONS.



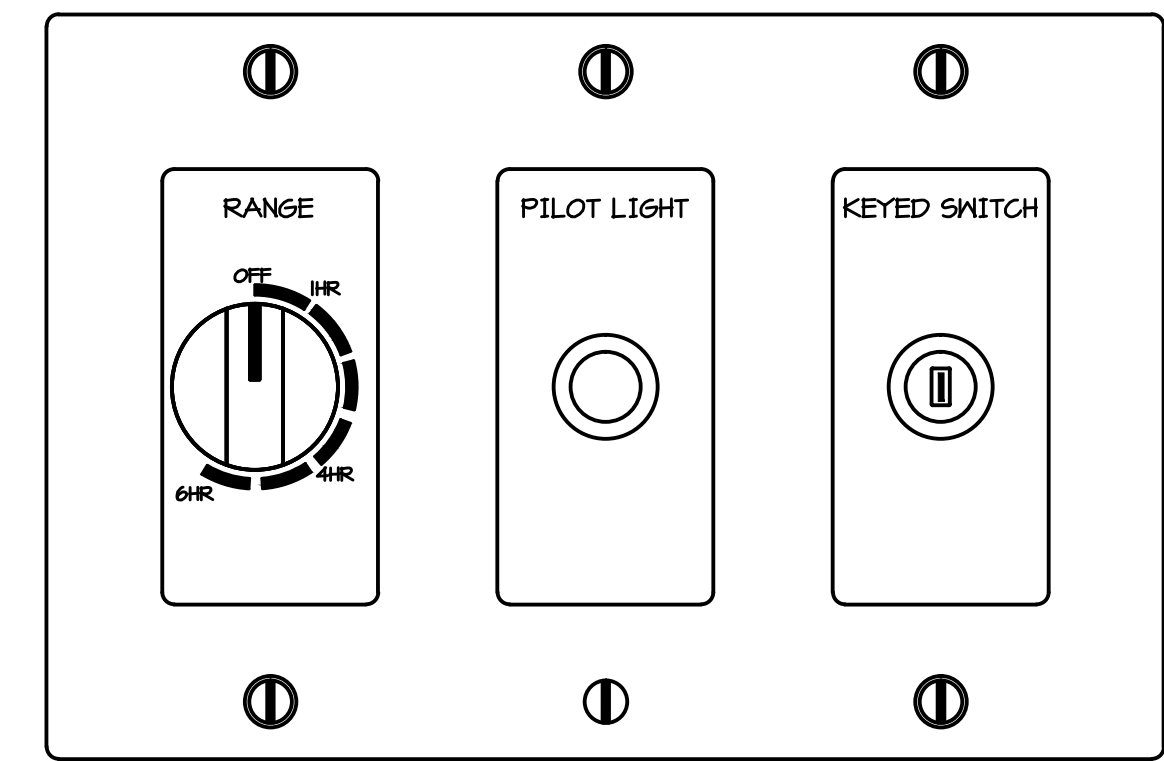
DETAILS FOR MEMBRANE PENETRATIONS IN FIRE & ACOUSTICAL RATED ASSEMBLIES

NOTE: RECESSED ELECTRICAL BOXES IN RATED ASSEMBLIES ARE MEMBRANE PENETRATIONS AND MUST COMPLY WITH 712.3.2 OF THE 2006 IBC CODE. RECESSED OUTLET BOXES ON OPPOSITE SIDES OF THE WALL MUST BE SEPARATED BY 24\"/>



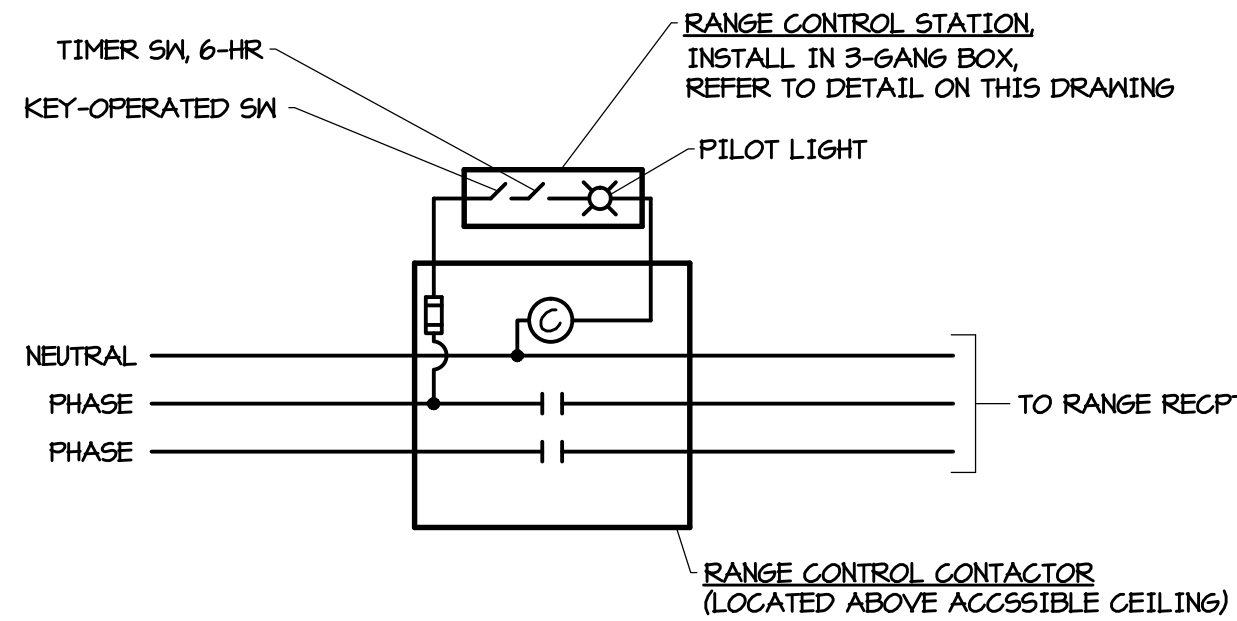
ELEVATION - OUTLET BOXES MTd AT DOORS - TYP

NO SCALE



DETAIL - RANGE CONTROL SWITCH

NO SCALE



COOKTOP CONTROL WIRING DIAGRAM

SCHEMATIC

ELECTRICAL ABBREVIATIONS (NOTE 1)

A OR ABV	AMPERE ABOVE	IC	INTERCOM OR INTERRUPTING CAPACITY
AC	ALTERNATING CURRENT	IG	ISOLATED GROUND
ACB	ADJUSTABLE FREQUENCY DRIVE	IMC	INTERMEDIATE METAL CONDUIT
AFD	ADJUSTABLE FREQUENCY DRIVE	INC	INCANDESCENT
AFF	ABOVE FINISHED FLOOR	INIT	INITIAL
AIG	AMPERES INTERRUPTING CAPACITY	JB	JUNCTION BOX
AL	ALUMINUM	KO	KNOCKOUT
AMP	AMPLIFIER	KV	KILOVOLT
ASYM	ASYMMETRICAL	KVA	KILOVOLT-AMPERE
ATS	AUTOMATIC TRANSFER SWITCH	KVAR	KILOVOLT-AMPERE REACTIVE
AWG	AMERICAN WIRE GAGE	KWH	KILOWATT-HOUR
BEL	BELOW	LA	LIGHTNING ARRESTER
BD	BUS DUCT	LPS	LOW PRESSURE SODIUM
BDT	BOTTOM BREAKER	LIT	LIGHTING
C	COUNTERTOP	LUM	LUMENS
CA	CABLE	MAG	MAGNETIC
CAB	CABINET	MAN	MANUAL
CATV	COMMUNITY ANTENNA TELEVISION OR CABLE TELEVISION	MAV	MASTER ANTENNA TELEVISION
CB	CIRCUIT BREAKER	MCB	MAIN CIRCUIT BREAKER
CCTV	CLOSED CIRCUIT TELEVISION	MCC	MOTOR CONTROL CENTER
CF	COMPACT FLUORESCENT	MCM	THOUSAND CIRCULAR MILS
CKT	CIRCUIT	M/G	MOTOR/GENERATOR
CL	CEILING	MH	METAL HALIDE OR MOUNTING HEIGHT
CND	CONDUIT	MIN	MINIMUM
CNTR	CENTER	MLO	MAIN LOSS ONLY
CONB	COMBINATION	MOD	MOTOR OPERATED DAMPER
COND	CONDUCTOR	MOT	MOTOR
CONN	CONNECTION	MS	MAGNETIC STARTER
CONT	CONTACTOR	MNTG	MOUNTED OR MOUNTING
CT	CURRENT TRANSFORMER	MTR	METER
CTRL	CONTROL	MV	MERCURY VAPOR
CU	COPPER	NEG	NATIONAL ELECTRICAL CODE
GM	COLD WATER	NEUT	NEUTRAL
DB	DOOR BELL	NFSS	NON-FUSIBLE SAFETY SWITCH NUMBER
DC	DIRECT CURRENT	NO	OVERHEAD
DIM	DIMENSION	P	POLE
DISC	DISCONNECT	PB	PULL BOX OR PUSHBUTTON
DR	DOOR RELEASE SERVICE	PBS	PUSHBUTTON STATION
DS	DOOR SWITCH	PHS	PHASE
DWG	DRAWING	PINL	PANEL
E OR EMER	EMERGENCY EXISTING TO BE RELOCATED	PINLBD	PANELBOARD
ELEV	ELEVATION/ELEVATOR	PK	PRIMARY
EM	EXISTING TO BE REMOVED	PT	POTENTIAL TRANSFORMER
EML	EXIST REMOVED AND RELOCATED TO THIS POSITION	PVC	POLYVINYL CHLORIDE
ENH	EXISTING TO BE REMOVED AND NEW INSTALLED	PWR	POWER
EHT	ELECTRICAL METALLIC TUBING	QTY	QUANTITY
ENCL	ENCLOSURE	RECPT	RECEPTACLE
ENG	ENGINE	REFRIG	REFRIGERATOR
EP	EXPLOSIONPROOF	RSC	RIGID STEEL CONDUIT
EQUIP	EQUIPMENT	SCC	SHORT CIRCUIT CURRENT
ER	EXISTING TO REMAIN	SOR	MOTOR OPERATED SMOKE DAMPER
ERG	ELEVATOR RECALL	SEC	SECONDARY
ENG	ELECTRIC WATER COOLER	SHR	SURFACE METAL RACENWAY
EXIST	EXISTING	SPKR	SPEAKER
EXT	EXTERIOR	SR	SURFACE RACENWAY
FA	FIRE ALARM	SS	SURGE SUPPRESSOR/ISOLATED GROUND
FACP	FIRE ALARM CONTROL PANEL	STR	STARTER
FDR	FEEDER	SN	SWITCH
FC	FOOTCANDLE	SHBD	SWITCHBOARD
FLOR	FLUORESCENT	SHGR	SWITCHGEAR
FSS	FUSIBLE SAFETY SWITCH	SYM	SYMMETRICAL
FXTR	FIXTURE	S/N	SOLID NEUTRAL
GD	GARAGE DOOR	TC	TIME CLOCK
GEN	GENERATOR	TEL	TELEPHONE
GF OR GF1	GROUND FAULT	TV	TELEVISION
GND	GROUND	TYP	TYPICAL
H	HORIZONTAL	UF	UNDERFLOOR
HG	HOSPITAL GRADE	UG	UNDERGROUND
HST	HIGH INTENSITY DISCHARGE	UL	UNDERWRITERS' LABORATORIES
HID	HEIGHT	UNO	UNLESS NOTED OTHERWISE
HOA	HAND-OFF-AUTOMATIC	V	VOLT
HP	HORSEPOWER OR HEAT PUMP	V/A	VOLT-AMPERE
HPF	HIGH POWER FACTOR	VAR	VOLT-AMPERE REACTIVE
HPS	HIGH PRESSURE SODIUM	VM	VOLTMETER
HTR	HEATER	W	WATT OR WIRE
HN	HOT WATER	WP	WEATHERPROOF
HZ	HERTZ	XFER	TRANSFER
		XFMR	TRANSFORMER

NOTES (ELECTRICAL ABBREVIATIONS):
1. REFER TO OTHER ABBREVIATION LISTS ELSEWHERE IN THESE DOCUMENTS FOR ABBREVIATIONS NOT LISTED HERE.

ELEC SYMBOL LEGEND (NOTE 1)

MTG. HGT. (NOTE 2)	SYMBOL (NOTES 3 & 4)	DESCRIPTION
	PLAN NOTE DESIGNATION.	
	LUMINAIRE TYPE DESIGNATION. "D" = PROVIDE DIMMING BALLAST FOR LUMINAIRE.	
	CEILING MOUNTED FLUORESCENT LUMINAIRE. (NOTE 6)	
	WALL MOUNTED FLUORESCENT LUMINAIRE. (NOTE 6)	
	CEILING MOUNTED INCANDESCENT, FLUORESCENT OR HID LUMINAIRE. (NOTE 6)	
	WALL MOUNTED INCANDESCENT, FLUORESCENT OR HID LUMINAIRE. (NOTE 6)	
	CEILING MOUNTED EXIST. SHADED QUADRANT(S) INDICATES FACE(S). PROVIDE ARROWS AS INDICATED ON DRAWINGS. LUMINAIRE TYPE "X", UNO.	
	SURFACE OR PENDANT CEILING MOUNTED INCANDESCENT, FLUORESCENT OR HID LUMINAIRE. (NOTE 6)	
	CEILING MOUNTED RECESSED FLUORESCENT LUMINAIRE. (NOTE 6)	
4'-0"	GENERAL USE SWITCH, SINGLE POLE.	
4'-0"	GENERAL USE SWITCH, THREE WAY.	
4'-0"	RANGE CONTROL SWITCH. REFER TO WIRING DIAGRAM & DETAIL ON THIS DRAWING.	
4'-0"	FLUORESCENT DIMMER SWITCH, WALL-BOX MOUNTED.	
	PHOTOCELL, SURFACE MOUNTED.	
	OCCUPANCY SENSOR SWITCH, CEILING MOUNTED. DUAL TECHNOLOGY TYPE UNLESS INDICATED OTHERWISE. "IR" = INFRARED TYPE. "U" = ULTRASONIC TYPE. "2" = 2-POLE DUAL RELAYS LOWERCASE ALPHABETIC SUBSCRIPT, WHERE SHOWN, INDICATES LOADS CONTROLLED. SET TIME DELAY TO AUTOMATIC UNLESS INDICATED OTHERWISE. SET TO AUTO-ON OPERATION UNLESS INDICATED OTHERWISE.	
4'-0"	OCCUPANCY SENSOR SWITCH WALL MOUNTED. DUAL TECHNOLOGY TYPE UNLESS INDICATED OTHERWISE. "IR" = INFRARED TYPE. "U" = ULTRASONIC TYPE. "2" = 2-POLE DUAL RELAYS LOWERCASE ALPHABETIC SUBSCRIPT, WHERE SHOWN, INDICATES LOADS CONTROLLED. SET TIME DELAY TO AUTOMATIC UNLESS INDICATED OTHERWISE. SET TO AUTO-ON OPERATION UNLESS INDICATED OTHERWISE.	
2'-0"	DUPLEX RECEPTACLE, WALL. ALPHA-NUMERIC OR NUMERIC SUBSCRIPT, WHERE SHOWN, INDICATES CIRCUIT. "C" = MOUNT BOTTOM 6"-1" ABOVE BACKSPASH / COUNTER. (TYPICAL FOR ALL RECEPTACLES)	
2'-0"	TWO DUPLEX RECEPTACLES IN A TWO GANG OUTLET BOX, WALL. PROVIDE BARRIER BETWEEN RECEPTACLES UNLESS CONNECTED TO SAME BRANCH CIRCUIT.	
	DUPLEX RECEPTACLE, FLOOR.	
	SPECIAL PURPOSE RECEPTACLE (TYPE AS NOTED), FLOOR.	
2'-0"	SPECIAL PURPOSE RECEPTACLE, WALL. "D" = DRYER (NEMA 14-30R), "R" = RANGE (NEMA 14-30R), UNO.	
2'-0"	JUNCTION BOX, WALL.	
2'-0"	TELEDATA OUTLET, WALL. "H" = WALL TYPE TELEDATA OUTLET MOUNTED 54" AFF.	
	SMOKE DETECTOR, CEILING.	
	HEAT DETECTOR, CEILING.	
4'-0"	FIRE ALARM MANUAL PULL STATION.	
	ADDRESSABLE FIRE ALARM CHIME WITH INTEGRAL VISUAL DEVICE, WALL MOUNTED. REFER TO ELEVATIONS - ELECTRICAL & FIRE ALARM DEVICES' FOR MOUNTING HEIGHTS. NUMBER INDICATES CANDELA RATING OF VISUAL DEVICE.	
	ADDRESSABLE FIRE ALARM VISUAL DEVICE, WALL MOUNTED. REFER TO ELEVATIONS - ELECTRICAL & FIRE ALARM DEVICES' FOR MOUNTING HEIGHTS. NUMBER INDICATES CANDELA RATING OF VISUAL DEVICE.	
	NURSES' CALL MASTER STATION.	
4'-0"	NURSES' CALL EMERGENCY STATION, WALL.	
7'-4"	NURSES' CALL CORRIDOR DOME LIGHT, WALL.	
	SOUND SYSTEM SPEAKER, CEILING.	
6'-0" TO TOP	SURFACE MOUNTED 208/120 VOLT PANELBOARD.	
5'-0" TO TOP	DISCONNECT SWITCH. "N" = NON-FUSIBLE, "F" = FUSIBLE, "3" = TOGGLE SWITCH TYPE. NUMBER INDICATES DISCONNECT SWITCH 3-POLES/40 AMP RATING/FUSED AT 45 AMP.	
5'-0" TO TOP	MANUAL MOTOR STARTER WITH PILOT LIGHT, SURFACE MOUNTED. "F" = FLUSH MOUNTED.	
5'-0" TO TOP	COMBINATION MAGNETIC MOTOR STARTER AND FUSED DISCONNECT SWITCH.	
	GROUND CONNECTION.	
	SPRINKLER SYSTEM WATER FLOW DETECTOR SWITCH.	
	SPRINKLER SYSTEM VALVE SUPERVISORY SWITCH.	

NOTES (ELECTRICAL SYMBOL LEGEND):

- THESE ARE STANDARD SYMBOLS AND MAY NOT ALL APPEAR ON THE PROJECT DRAWINGS. HOWEVER, WHEREVER THIS SYMBOL APPEARS ON THE PROJECT DRAWINGS, THE ITEM SHALL BE FURNISHED AND INSTALLED.
- UNLESS NOTED OTHERWISE, MOUNTING HEIGHTS ARE FROM FINISHED FLOOR TO CENTERLINE OF OUTLET. WHERE THE MOUNTING HEIGHT INDICATED ON PLAN IS DIFFERENT FROM THE LEGEND, THE PLAN TAKES PRECEDENCE.
- INSTALL RECEPTACLE AND TELEPHONE OUTLET BOXES (OR OTHER OUTLET BOXES SUCH AS TV, COMPUTER, ETC.) 6" APART (EDGE TO EDGE) WHERE SHOWN SIDE BY SIDE ON WALL.
- SEE ELECTRICAL ABBREVIATIONS FOR ALPHABETIC SUBSCRIPT WITH SYMBOL, UNO.
- ARROW(S) INDICATE DIRECTION OF MAXIMUM LIGHT DISTRIBUTION.
- = COMPLETE LUMINAIRE CONNECTED ON EMERGENCY CIRCUIT.

Revisions:	Date:	ARCHITECT/ENGINEERS: SFCS Architecture Engineering Planning Interiors SFCS Inc. • 305 South Jefferson Street Roanoke, Virginia 24011.2003 540.344.6664 • Fax 540.343.6925 www.sfcs.com	 Approved Energy Engineer Approved Infection Control Approved Service Chief Approved Safety Manager Approved Chief of Staff Approved GEMS Coordinator Approved Associate Director	Drawing Title: ELECTRICAL SYMBOL LEGEND, ABBREVIATIONS + DETAILS Approved Chief of Facility Management Services Approved Medical Center Director	Project Title: Patient Dining Area CLC VA Medical Center SFCS Commission Number: 6527.00 Location: Salem, Virginia Date: 03/15/12 Checked: WAM Drawn: CIW	Project Number: 658-307 Building Number(s): 2/2A Drawing Number: E0.1 Dwg 56 of 65	Office of Construction and Facilities Management
------------	-------	--	--	--	---	---	---