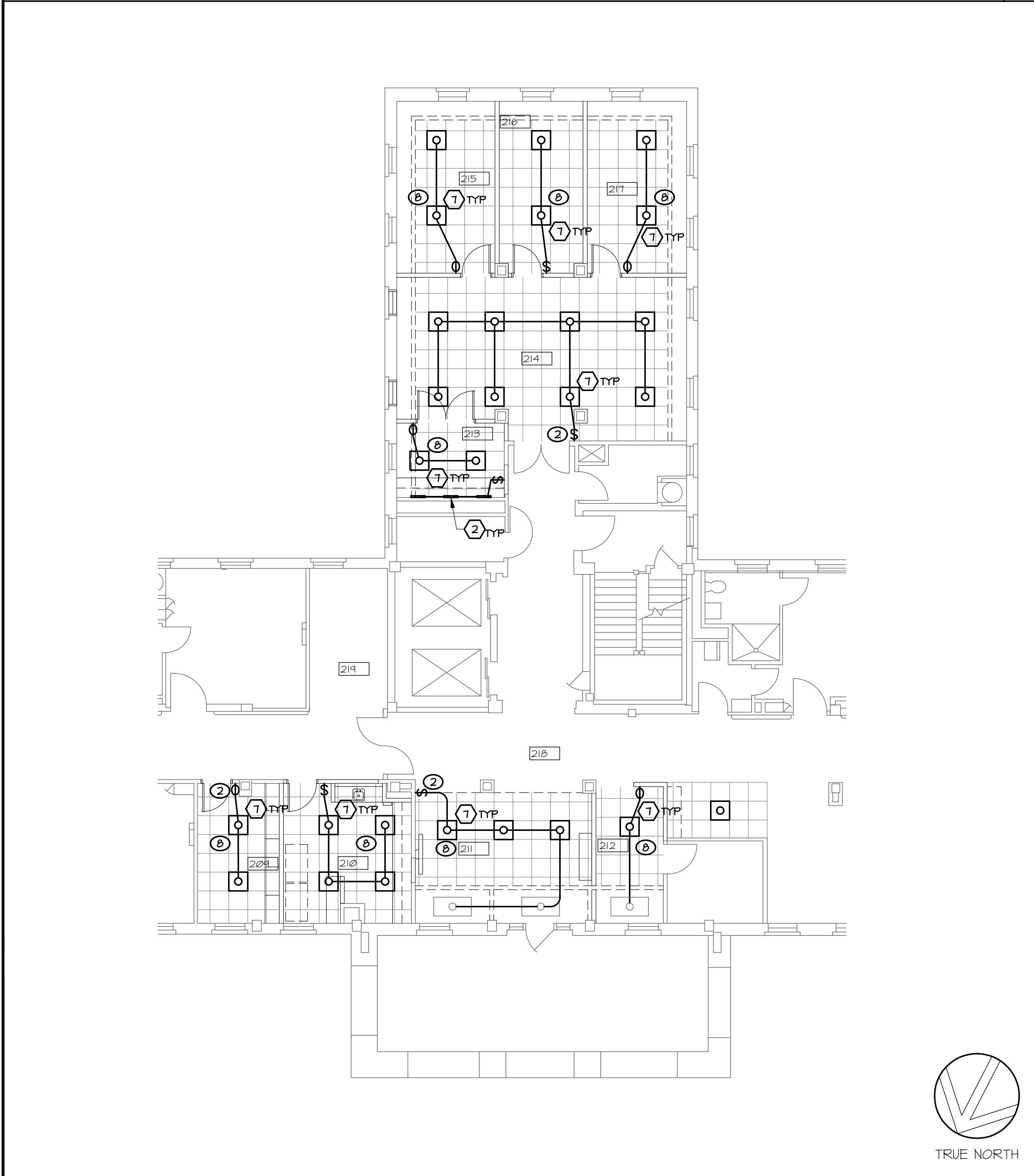


three inches = one foot  
one and one half inches = one foot  
one inch = one foot  
three quarters inch = one foot  
one half inch = one foot  
three eighths inch = one foot  
one quarter inch = one foot  
one eighth inch = one foot

PARTIAL EXISTING BASEMENT PLAN - BLDG 2A LIGHTING 1/8" = 1'-0" 3



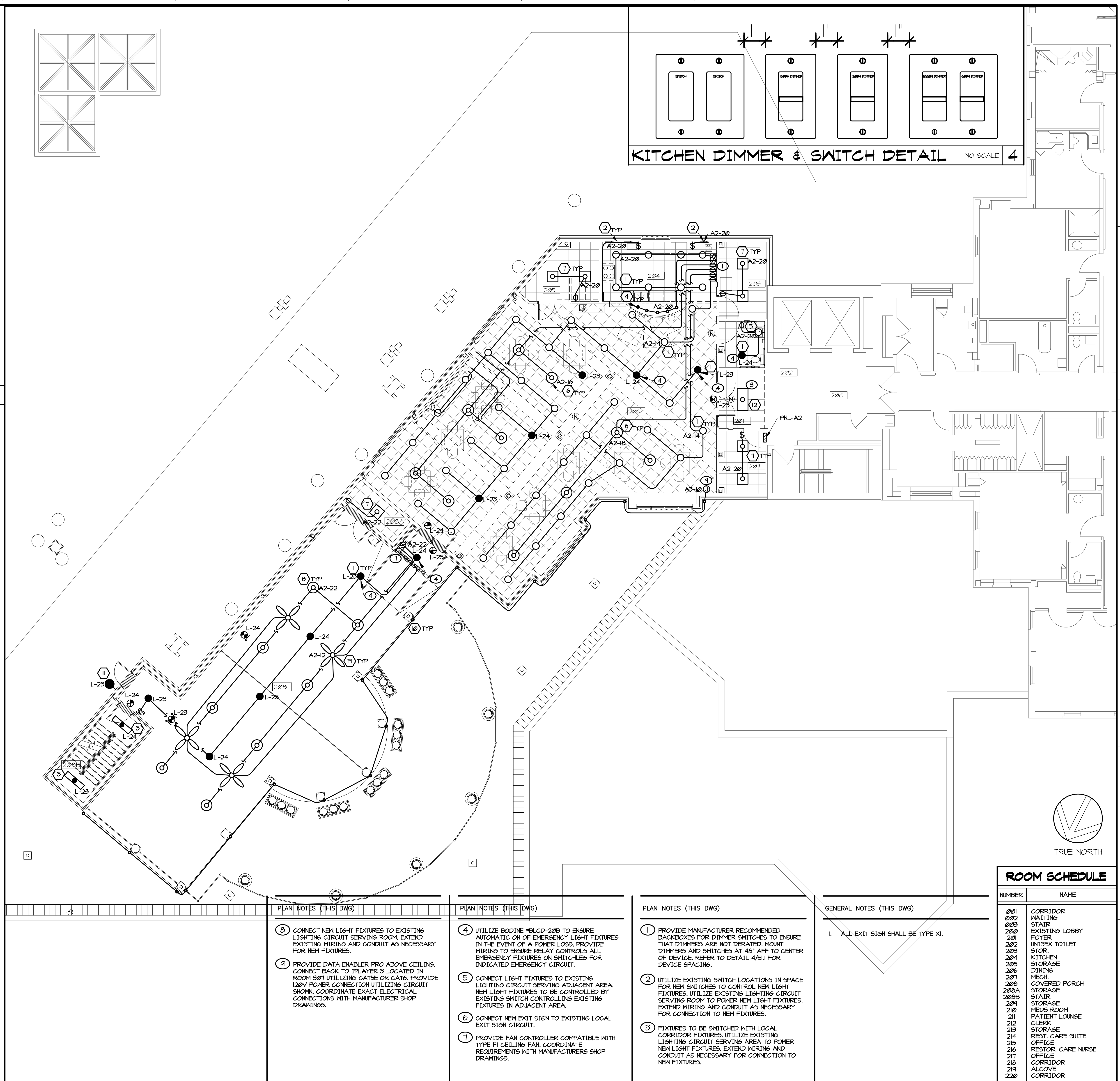
PARTIAL EXISTING SECOND FLOOR PLAN - LIGHTING 1/8" = 1'-0" 2

ARCHITECT/ENGINEERS:

**SFCs** Architecture  
Engineering  
Planning  
Interiors

SFCs Inc. • 305 South Jefferson Street  
Roanoke, Virginia 24011.2003  
540.344.6664 • Fax 540.343.6925  
www.sfc.com

Revisions: \_\_\_\_\_ Date: \_\_\_\_\_



SECOND FLOOR AND ROOF PLAN - LIGHTING 1/8" = 1'-0" 4

Approved Energy Engineer

Approved Infection Control

Approved Service Chief

Approved Safety Manager

Approved Chief of Staff

Approved GEMS Coordinator

Approved Associate Director

Approved Chief of Facility Management Services

Approved Medical Center Director

Drawing Title:  
**SECOND FLOOR PLAN - LIGHTING**

Project Title:  
Patient Dining Area CLC  
VA Medical Center  
SFCs Commission Number: 6527.00

Location:  
Salem, Virginia

Date:  
03/15/12

Checked:  
WAM

Drawn:  
CIW

Project Number:  
658-307

Building Number(s):  
2/2A

Drawing Number:  
E1.1

Dwg. 59 of 65

Office of Construction and Facilities Management

Department of Veterans Affairs