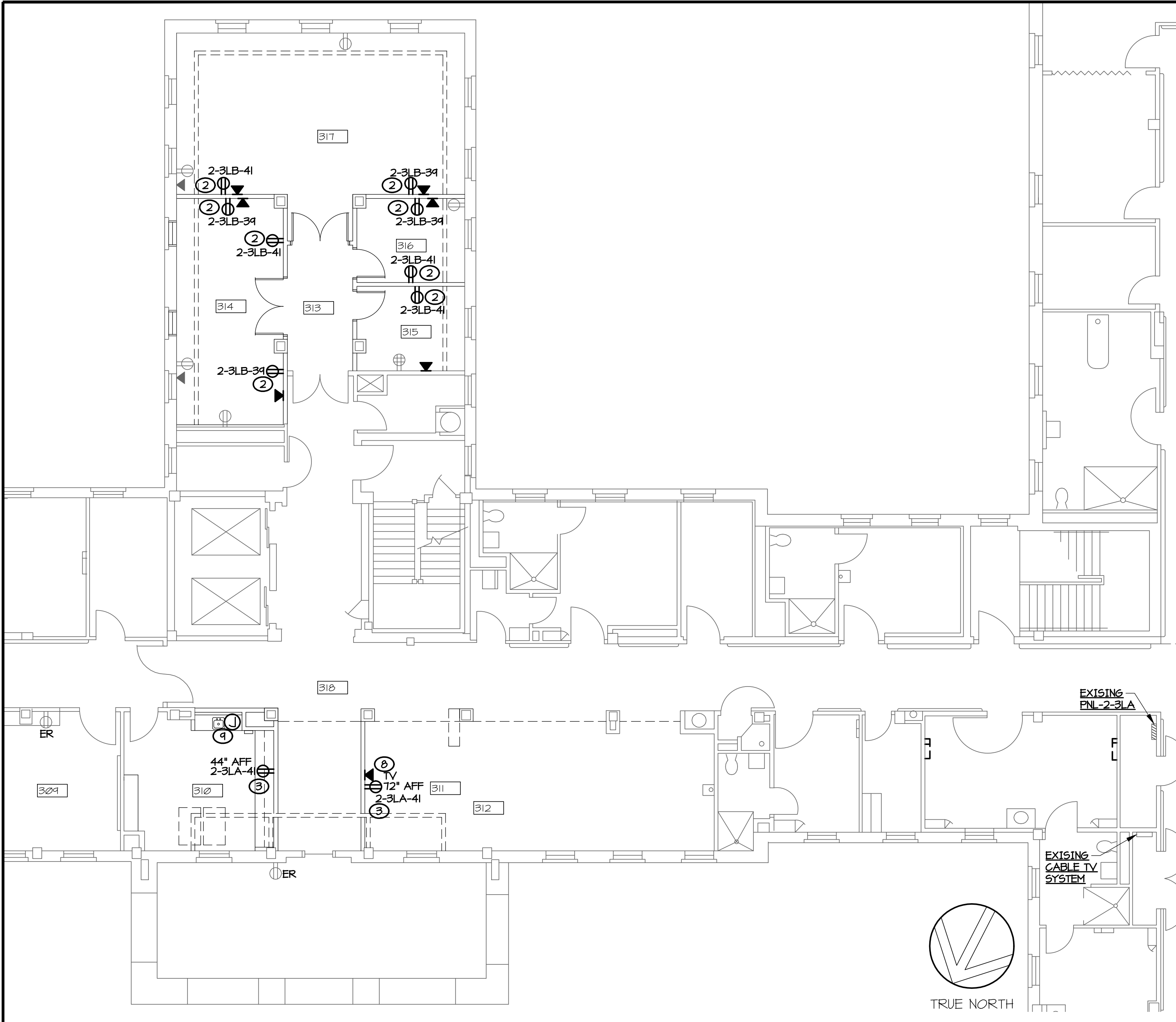
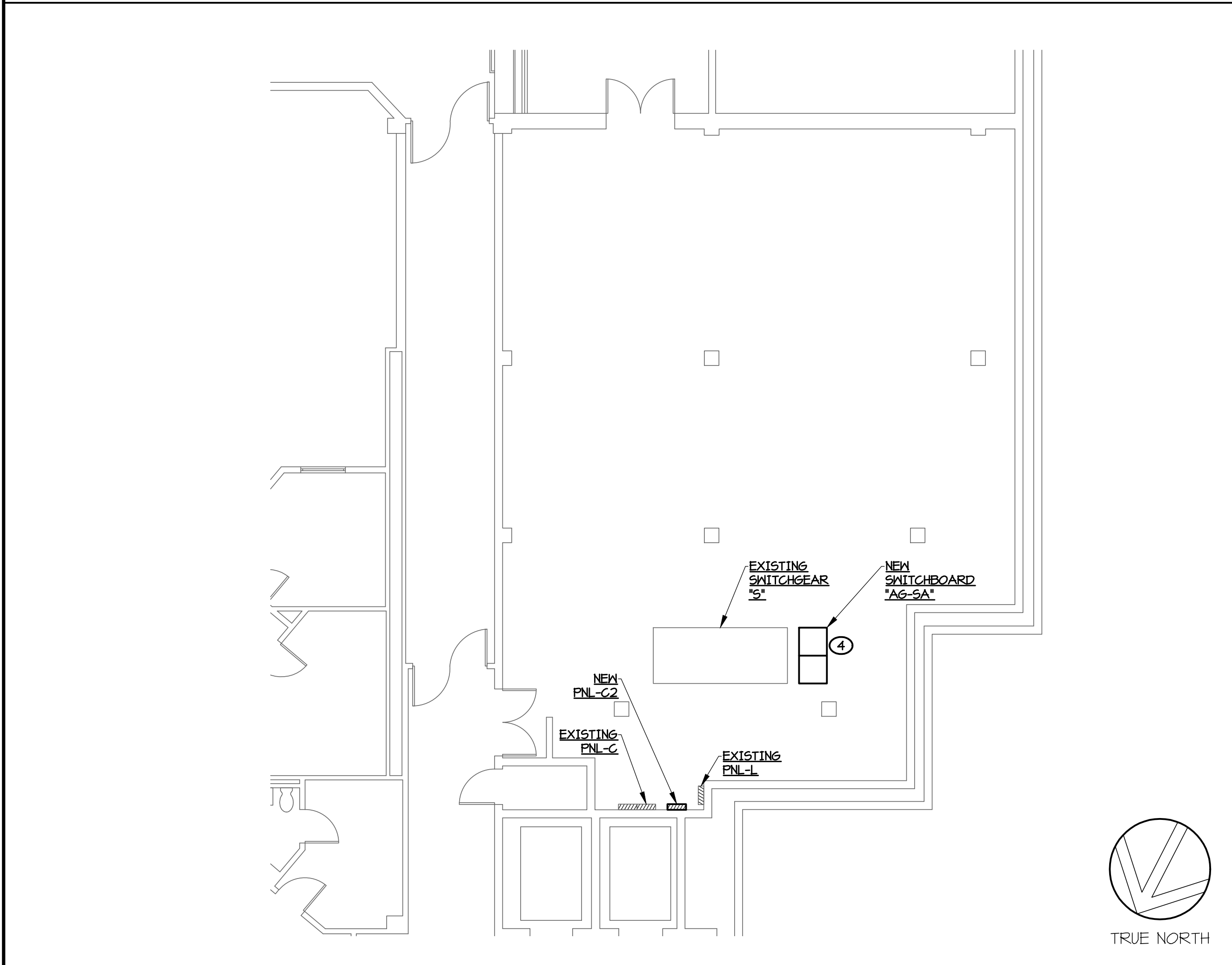


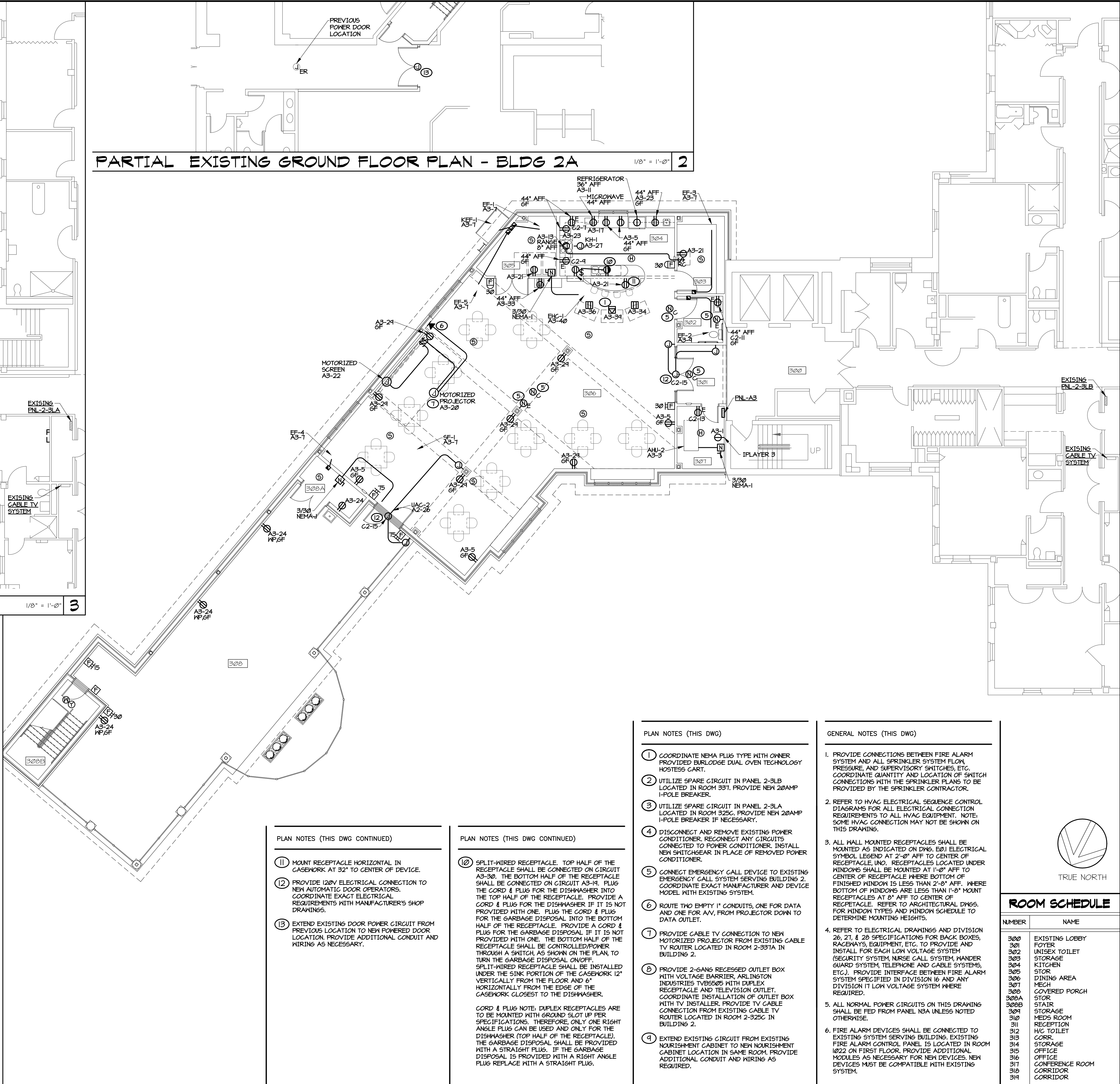
three eighths inch = one foot  
one eighth inch = one foot  
one quarter inch = one foot  
one half inch = one foot  
three quarters inch = one foot  
one inch = one foot  
one and one half inches = one foot  
two inches = one foot  
three inches = one foot  
four inches = one foot  
five inches = one foot  
six inches = one foot  
seven inches = one foot  
eight inches = one foot  
nine inches = one foot  
ten inches = one foot  
eleven inches = one foot  
twelve inches = one foot  
thirteen inches = one foot  
fourteen inches = one foot  
fifteen inches = one foot  
sixteen inches = one foot  
seventeen inches = one foot  
eighteen inches = one foot  
nineteen inches = one foot  
twenty inches = one foot  
twenty one inches = one foot  
twenty two inches = one foot  
twenty three inches = one foot  
twenty four inches = one foot  
twenty five inches = one foot  
twenty six inches = one foot  
twenty seven inches = one foot  
twenty eight inches = one foot  
twenty nine inches = one foot  
thirty inches = one foot  
thirty one inches = one foot  
thirty two inches = one foot  
thirty three inches = one foot  
thirty four inches = one foot  
thirty five inches = one foot  
thirty six inches = one foot  
thirty seven inches = one foot  
thirty eight inches = one foot  
thirty nine inches = one foot  
forty inches = one foot  
forty one inches = one foot  
forty two inches = one foot  
forty three inches = one foot  
forty four inches = one foot  
forty five inches = one foot  
forty six inches = one foot  
forty seven inches = one foot  
forty eight inches = one foot  
forty nine inches = one foot  
fifty inches = one foot  
fifty one inches = one foot  
fifty two inches = one foot  
fifty three inches = one foot  
fifty four inches = one foot  
fifty five inches = one foot  
fifty six inches = one foot  
fifty seven inches = one foot  
fifty eight inches = one foot  
fifty nine inches = one foot  
sixty inches = one foot  
sixty one inches = one foot  
sixty two inches = one foot  
sixty three inches = one foot  
sixty four inches = one foot  
sixty five inches = one foot  
sixty six inches = one foot  
sixty seven inches = one foot  
sixty eight inches = one foot  
sixty nine inches = one foot  
seventy inches = one foot  
seventy one inches = one foot  
seventy two inches = one foot  
seventy three inches = one foot  
seventy four inches = one foot  
seventy five inches = one foot  
seventy six inches = one foot  
seventy seven inches = one foot  
seventy eight inches = one foot  
seventy nine inches = one foot  
eighty inches = one foot  
eighty one inches = one foot  
eighty two inches = one foot  
eighty three inches = one foot  
eighty four inches = one foot  
eighty five inches = one foot  
eighty six inches = one foot  
eighty seven inches = one foot  
eighty eight inches = one foot  
eighty nine inches = one foot  
ninety inches = one foot  
ninety one inches = one foot  
ninety two inches = one foot  
ninety three inches = one foot  
ninety four inches = one foot  
ninety five inches = one foot  
ninety six inches = one foot  
ninety seven inches = one foot  
ninety eight inches = one foot  
ninety nine inches = one foot  
one hundred inches = one foot



PARTIAL EXISTING THIRD FLOOR PLAN 1/8" = 1'-0" 3



PARTIAL EXISTING GROUND FLOOR PLAN - BLDG 2A 1/8" = 1'-0" 4



NEW THIRD FLOOR PLAN 1/8" = 1'-0" 5

ARCHITECT/ENGINEERS: <b>SFCs</b> SFCs Inc. • 305 South Jefferson Street Roanoke, Virginia 24011.2003 540.344.6664 • Fax 540.343.6925 www.sfc.com				Approved: Energy Engineer  <b>CONSTRUCTION DOCUMENTS</b>		Approved: Infection Control  Approved: Safety Manager  Approved: GEMS Coordinator		Approved: Service Chief  Approved: Chief of Staff  Approved: Associate Director		Drawing Title: <b>THIRD FLOOR PLAN - POWER</b>  Approved: Chief of Facility Management Services  Approved: Medical Center Director		Project Title: <b>Patient Dining Area CLC VA Medical Center</b> SFCs Commission Number: 6527.00  Location: <b>Salem, Virginia</b>  Date: 03/15/12		Project Number: <b>658-307</b> Building Number(s): <b>2/2A</b>  Drawing Number: <b>E2.2</b> Dwg. 62 of 65		Office of Construction and Facilities Management  Department of Veterans Affairs	
---	--	--	--	--	--	---	--	---	--	---	--	---	--	--	--	--	--