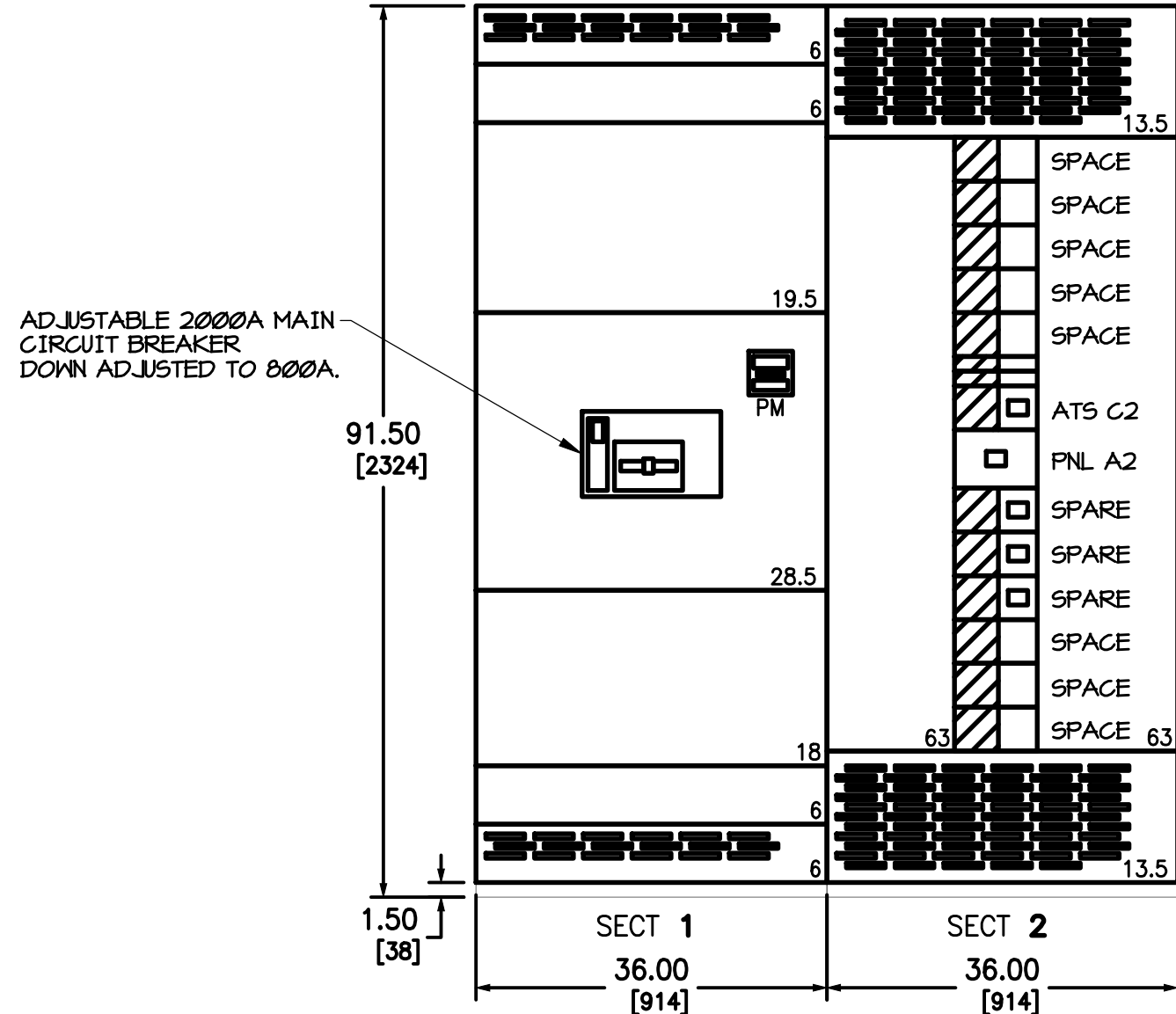


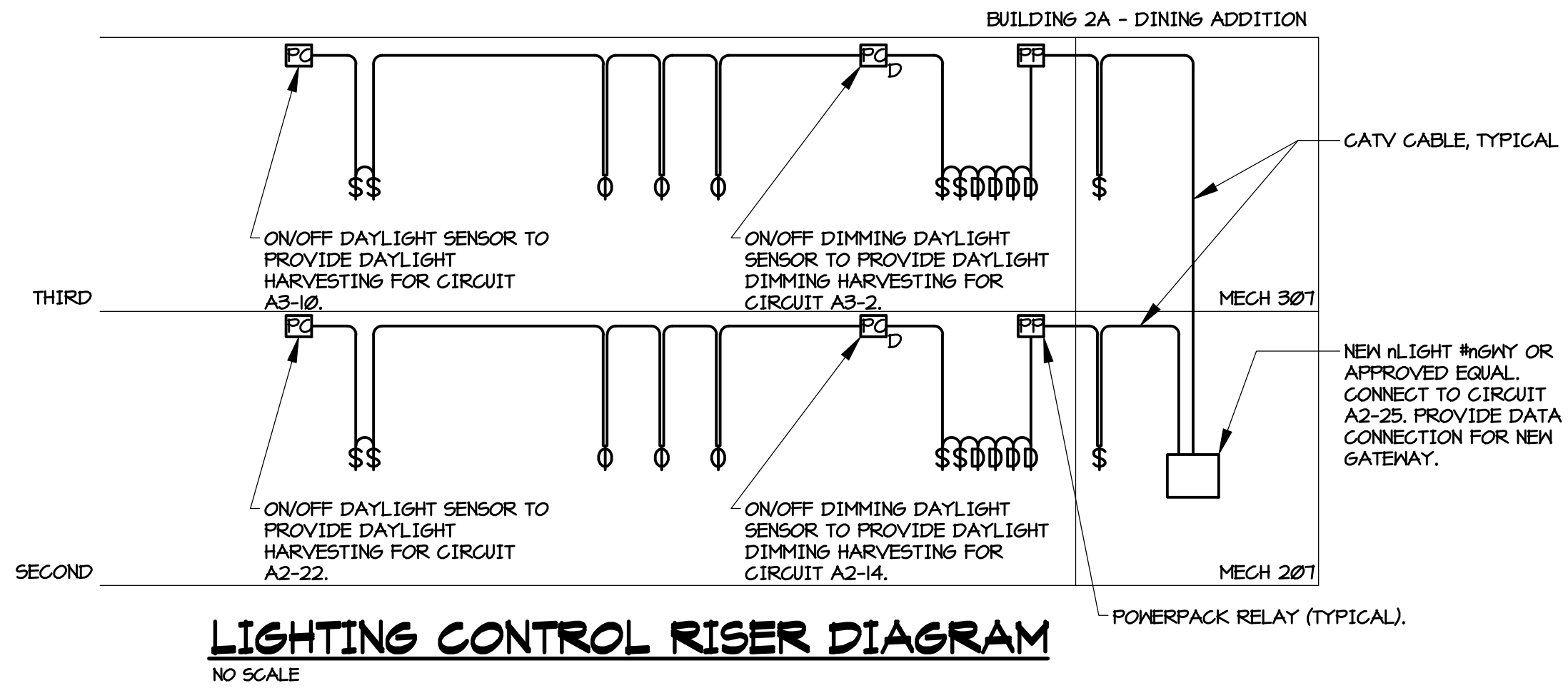
three inches = one foot
one and one half inches = one foot
three quarters inch = one foot
one half inch = one foot
three eighths inch = one foot
one quarter inch = one foot
one eighth inch = one foot

SWITCHBOARD SCHEDULE									
SWITCHBOARD AG-SA									
		VOLTS: 200Y/120		PHASE: 3		WIRE: 4			
		BUS AMPS: 2000		SCC AMP RATING: 65/200					
SECT DESG	UNIT NO	DESCRIPTION	CKT BRKR	POLE	TRIP	CONDUCTORS (CU)			REMARKS
						PHASE	NEUTRAL	GROUND	SIZE
1	M1	MAIN BREAKER	3	800		2000 AMP BUS			GROUND FAULT
2	1	PANEL A2	3	400		2000 AMP BUS			
2	2	PANEL C2	3	100		-	-	-	-
2	3	SPARE	3	100		-	-	-	-
2	4	SPARE	3	100		-	-	-	-
2	5	SPARE	3	100		-	-	-	-
2	6	SPACE ONLY (100 AMP FRAME)	3	-		-	-	-	-
2	7	SPACE ONLY (100 AMP FRAME)	3	-		-	-	-	-
2	8	SPACE ONLY (100 AMP FRAME)	3	-		-	-	-	-
4	5	SPACE ONLY (100 AMP FRAME)	3	-		-	-	-	-
4	6	SPACE ONLY (100 AMP FRAME)	3	-		-	-	-	-
4	7	SPACE ONLY (100 AMP FRAME)	3	-		-	-	-	-
4	8	SPACE ONLY (100 AMP FRAME)	3	-		-	-	-	-
4	9	SPACE ONLY (100 AMP FRAME)	3	-		-	-	-	-
4	10	SPACE ONLY (100 AMP FRAME)	3	-		-	-	-	-

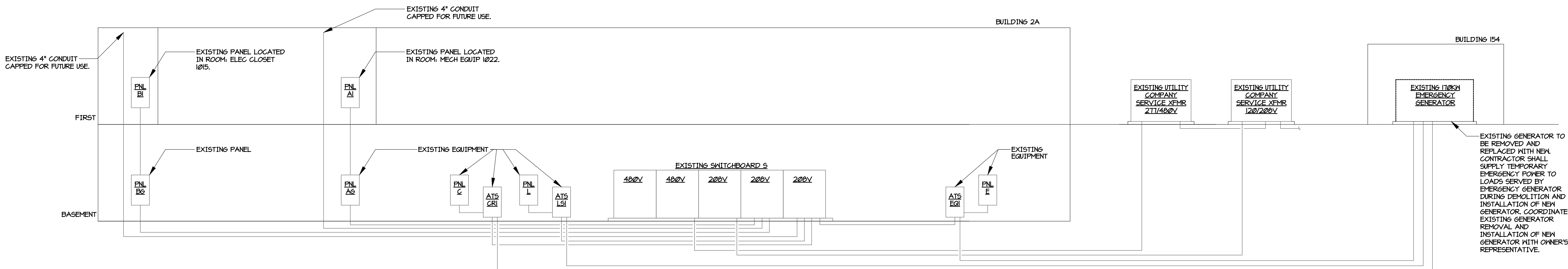
PHASE "A" - 34.4 KVA
PHASE "B" - 35.1 KVA
PHASE "C" - 34.8 KVA
TOTAL SWITCHBOARD LOAD CONNECTED - 104.3 KVA (284.51 AMPS)
TOTAL SWITCHBOARD LOAD DEMAND - 42 KVA (255.31 AMPS)



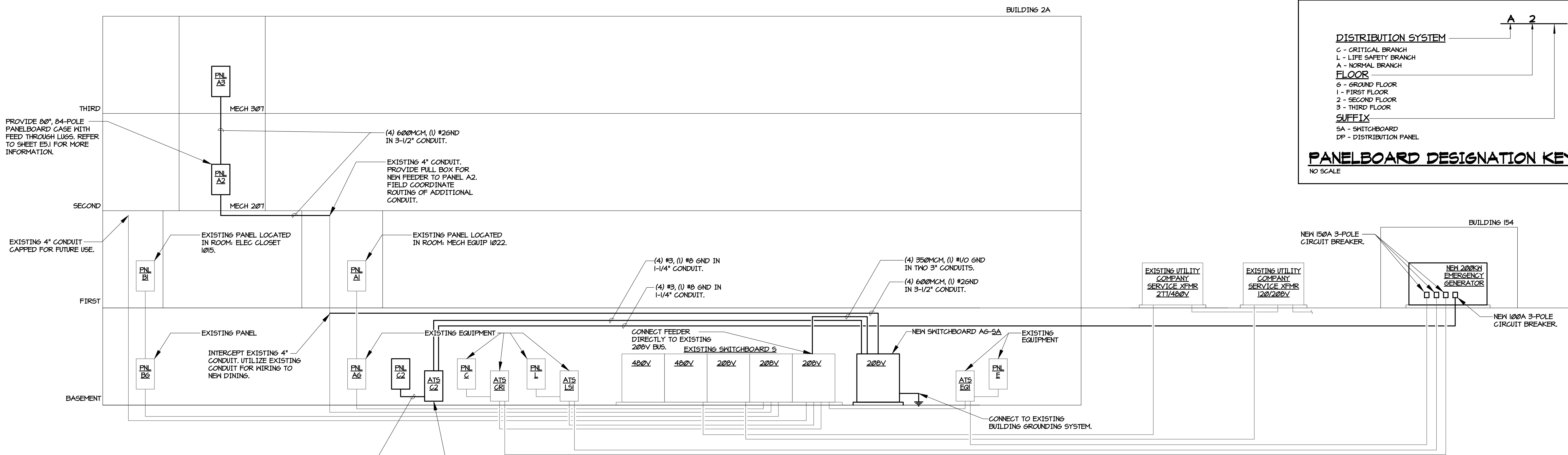
NEW SWITCHBOARD ELEVATION
NO SCALE



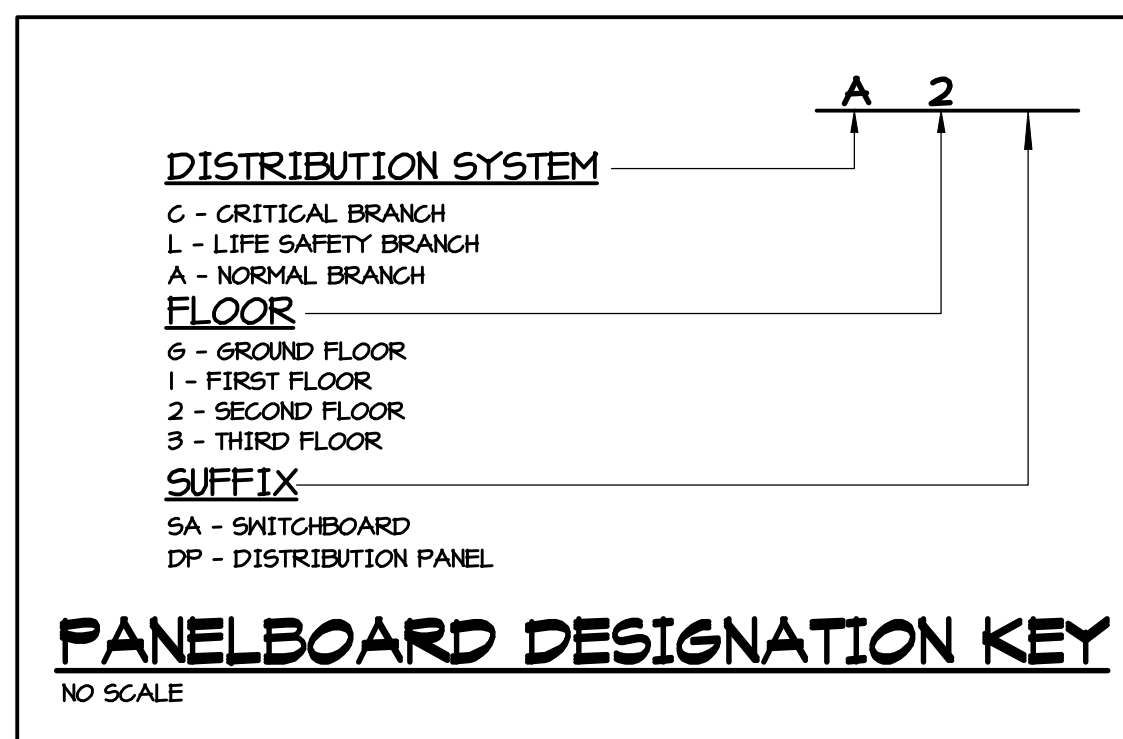
LIGHTING CONTROL RISER DIAGRAM
NO SCALE



DEMOLITION POWER RISER DIAGRAM - ADDITION
NO SCALE



NEW POWER RISER DIAGRAM - ADDITION
NO SCALE



EXISTING MAIN SWITCHBOARD "S" CALCULATIONS	
1. CALCULATION UTILIZES EXISTING PEAK LOAD ON MEB * 5" PER NEC & CONTINUOUS MONITORING PROVIDED FROM AUGUST 2011 THROUGH FEBRUARY 2012.	
PEAK DEMAND PER MONITORING DATA = 103.81KVA	
103.81KVA = 510.2A (AMPS)	
510.2A x 1.25 (PER NEC) = 637.8A	
637.8A = PEAK LOAD DEMAND PER NEC	
1308A SERVICE - PEAK DEMAND = 1508.2A AVAILABLE	
NEW DEMAND LOAD = 236.3A	
A. PANEL A2 = 213.9A	
B. PANEL C2 = 14.5A	
C. EXISTING PANEL L = 2.4A INCREASE	
NEW DEMAND LOAD IS LESS THAN THE AVAILABLE SERVICE.	
236.3A < 1508.2A	

ARCHITECT/ENGINEERS: SFC SFC Inc. • 305 South Jefferson Street Roanoke, Virginia 24011.2003 540.344.6664 • Fax 540.343.6925 www.sfc.com		Approved Energy Engineer Approved Infection Control Approved Service Chief Approved Safety Manager Approved Chief of Staff Approved GEMS Coordinator Approved Associate Director		Drawing Title: POWER RISER DIAGRAM - ADDITION Approved: Chief of Facility Management Services Approved: Medical Center Director		Project Title: Patient Dining Area CLC VA Medical Center SFC Commission Number: 6527.00 Location: Salem, Virginia Date: 03/15/12 Checked: WAM Drawn: CIW		Project Number: 658-307 Building Number(s): 2/2A Drawing Number: E4.1 Dwg. 63 of 65		Office of Construction and Facilities Management Department of Veterans Affairs	
---	--	--	--	---	--	--	--	--	--	--	--