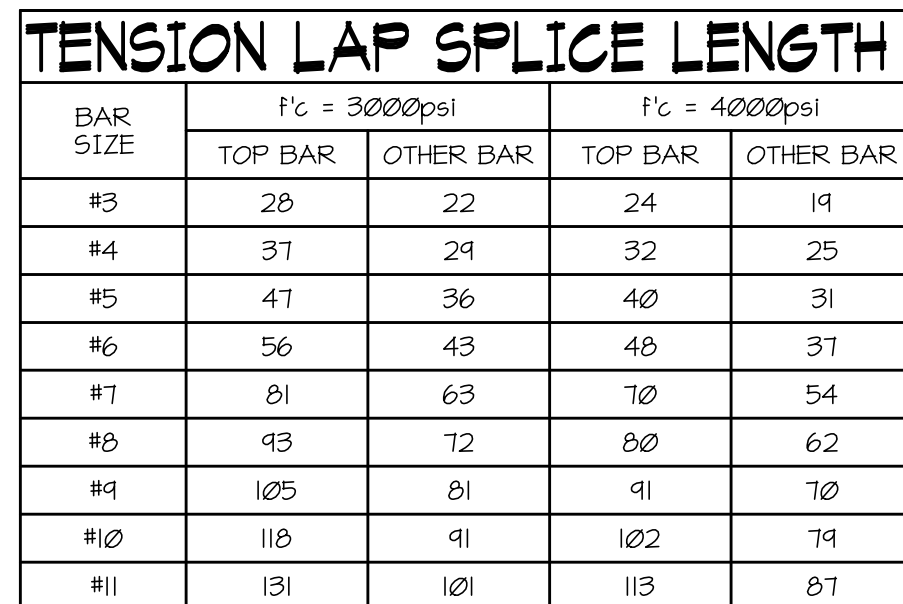


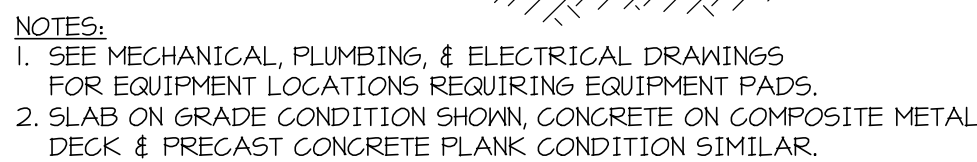
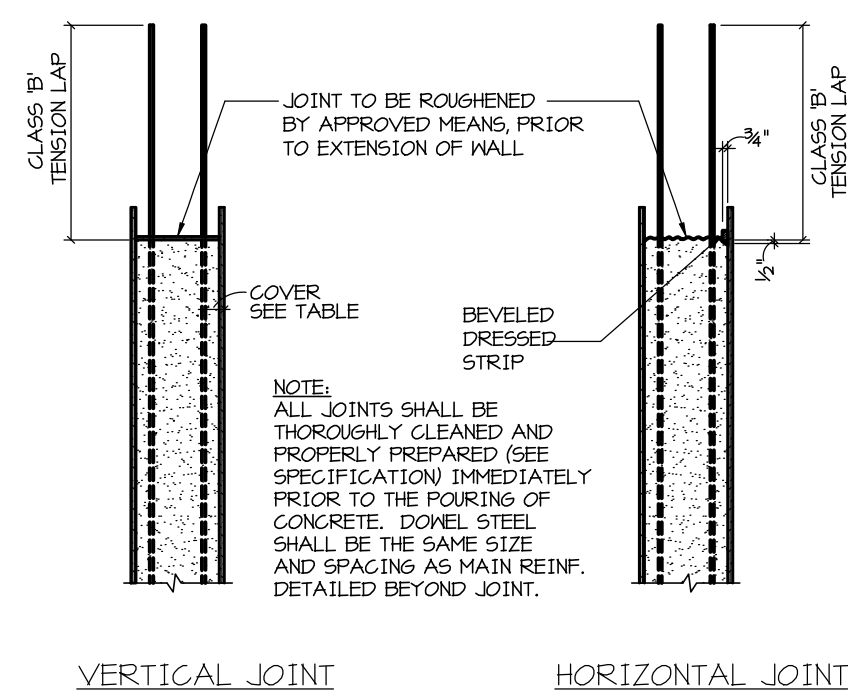
ALL CONCRETE MASONRY UNIT WALLS SHALL HAVE CONTINUOUS HORIZONTAL JOINT REINFORCEMENT AS SPECIFIED.

AT ACRYLIC ADHESIVE; ITW RAMSET/ RED HEAD

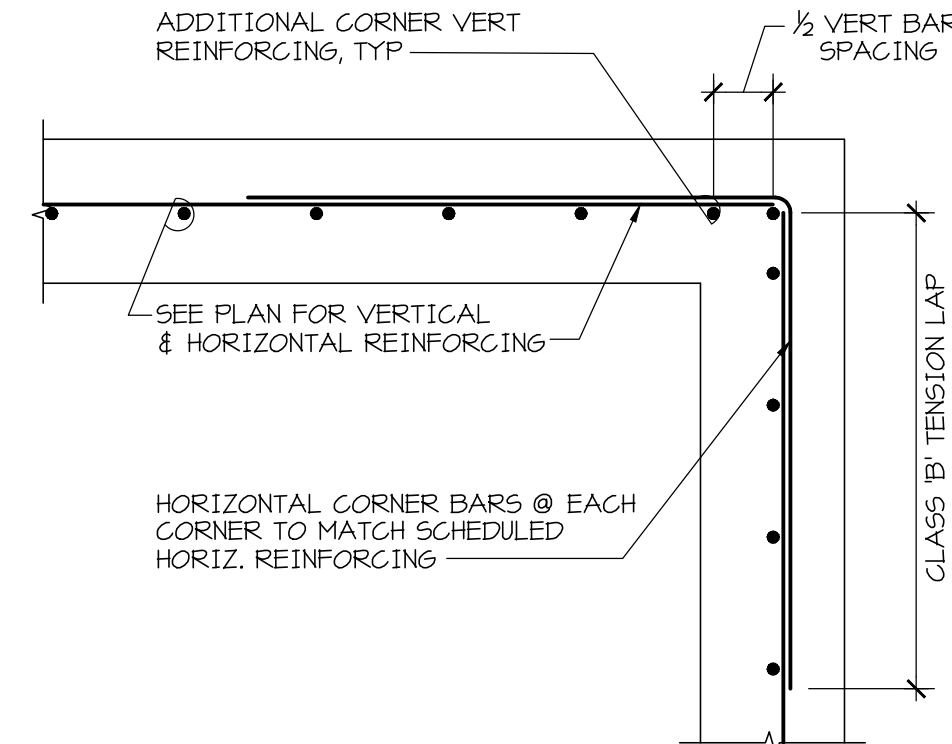
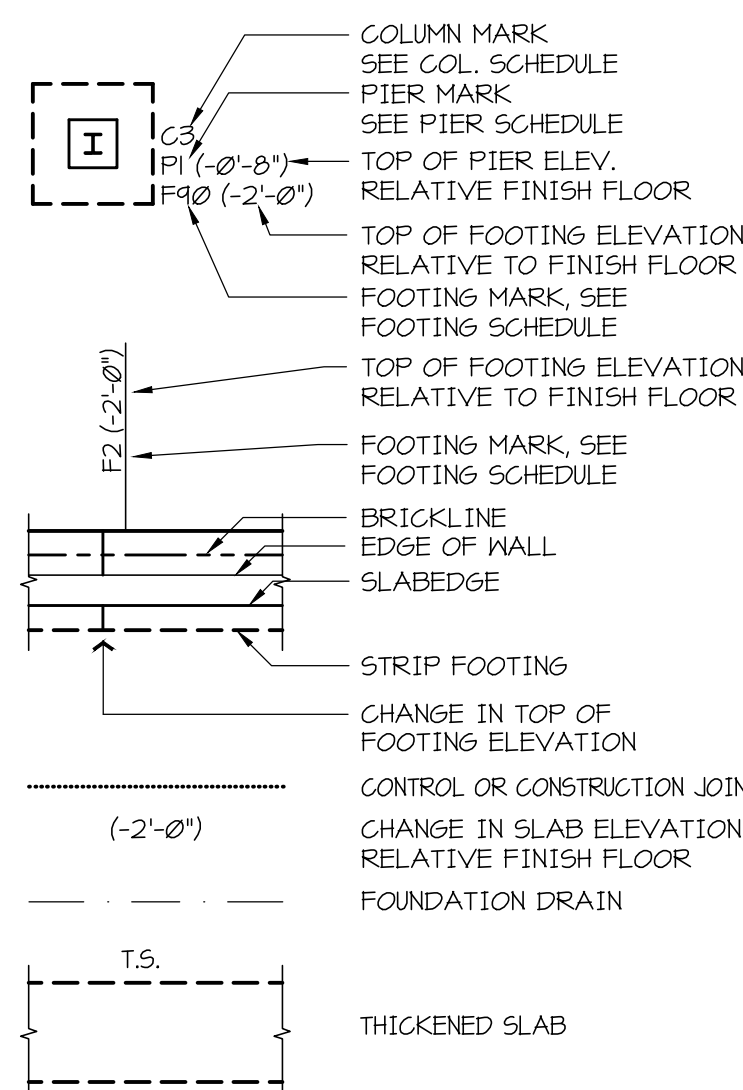
NO ANCHOR SHALL BE INSTALLED PRIOR TO RECEIVING PROPER INSTALLATION TRAINING FROM A MANUFACTURER'S REPRESENTATIVE. ALL ANCHORS SHALL BE INSTALLED BY PERSONNEL TRAINED BY MANUFACTURER'S REPRESENTATIVE.



BAR SIZE	f'c = 3000psi		f'c = 4000psi	
	TOP BAR	OTHER BAR	TOP BAR	OTHER BAR
#3	28	22	24	19
#4	37	29	32	25
#5	47	36	40	31
#6	56	43	48	37
#7	81	63	70	54
#8	93	72	80	62
#9	105	81	91	70
#10	118	91	102	79
#11	131	101	113	87



TENSION LAP SPLICE LENGTH SCHEDULE



Approved: Energy Engineer	Approved: Infection Control
<div style="text-align: center;"> <h1>CONSTRUCTION DOCUMENTS</h1> </div>	Approved: Safety Manager
	Approved: GEMS Coordinator

Approved: Service Chief

Approved: Chief of Staff

Approved: Associate Director

Drawing Title: GENERAL NOTES, TYPICAL DETAILS AND SCHEDULES	
Approved: Chief of Facility Management Services	

Project Title: Patient Dining Area CLC VA Medical Center SFCS Commission Number: 6527.00
Location: Salem, Virginia

Project Number: 658-307
Building Number(s): 2/2A
Drawing Number: S01

Office of
Construction
and Facilities
Management

