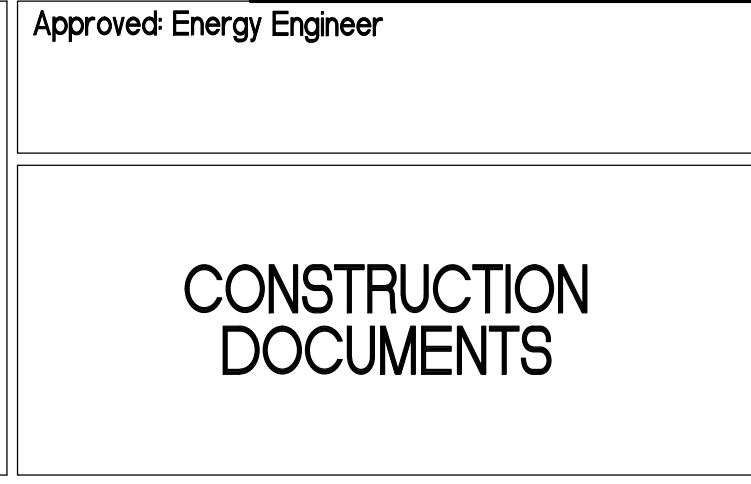




ARCHITECT/ENGINEERS:	
SFCS	Architecture Engineering Planning Interiors
SFCS Inc. • 305 South Jefferson Street Roanoke, Virginia 24011.2003 540.344.6664 • Fax 540.343.6925 www.sfcs.com	



Approved: Energy Engineer

CONSTRUCTION
DOCUMENTS

Approved: Infection Control
Approved: Safety Manager
Approved: GEMS Coordinator

Approved: Service Chief
Approved: Chief of Staff
Approved: Associate Director

Drawing Title:	EXISTING STAIR BASEMENT AND FIRST FLOOR PLANS
Approved: Chief of Facility Management Services	
Approved: Medical Center Director	

Project Title: Patient Dining Area CLC VA Medical Center SFCS Commission Number: 6527.00		
Location: Salem, Virginia		
Date: 03/15/12	Checked: CMF	Drawn: PJW

Project Number: 658-307
Building Number(s): 2/2A
Drawing Number: S1.4 Dwg. 40 of 65

Office of
Construction
and Facilities
Management

 Department of
Veterans Affairs



$1/4" = 1'-0"$	2
----------------	----------



1/4" = 1'-0"	1
--------------	---