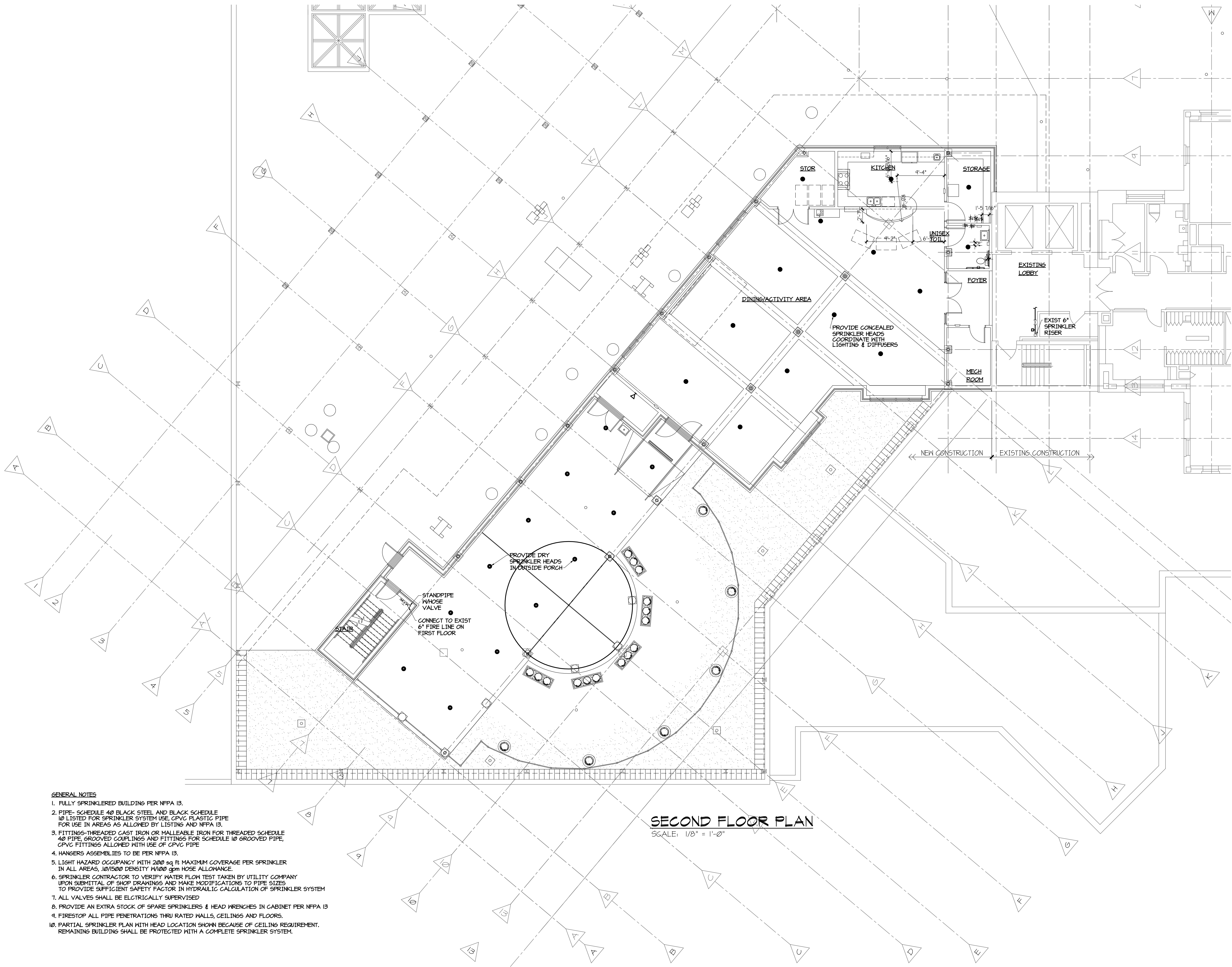


three inches = one foot
one and one half inches = one foot
one inch = one foot
three quarters inch = one foot
one half inch = one foot
three eighths inch = one foot
one quarter inch = one foot
one eighth inch = one foot



- GENERAL NOTES**
1. FULLY SPRINKLERED BUILDING PER NFPA 13.
 2. PIPE - SCHEDULE 40 BLACK STEEL AND BLACK SCHEDULE 10 LISTED FOR SPRINKLER SYSTEM USE, CPVC PLASTIC PIPE FOR USE IN AREAS AS ALLOWED BY LISTING AND NFPA 13.
 3. FITTINGS-THREADED CAST IRON OR MALLEABLE IRON FOR THREADED SCHEDULE 40 PIPE, GROOVED COUPLINGS AND FITTINGS FOR SCHEDULE 10 GROOVED PIPE, CPVC FITTINGS ALLOWED WITH USE OF CPVC PIPE.
 4. HANGERS ASSEMBLIES TO BE PER NFPA 13.
 5. LIGHT HAZARD OCCUPANCY WITH 200 sq ft MAXIMUM COVERAGE PER SPRINKLER IN ALL AREAS, 10/1500 DENSITY 1700 gpm HOSE ALLOWANCE.
 6. SPRINKLER CONTRACTOR TO VERIFY WATER FLOW TEST TAKEN BY UTILITY COMPANY UPON SUBMITTAL OF SHOP DRAWINGS AND MAKE MODIFICATIONS TO PIPE SIZES TO PROVIDE SUFFICIENT SAFETY FACTOR IN HYDRAULIC CALCULATION OF SPRINKLER SYSTEM.
 7. ALL VALVES SHALL BE ELCTRICALLY SUPERVISED.
 8. PROVIDE AN EXTRA STOCK OF SPARE SPRINKLERS & HEAD WRENCHES IN CABINET PER NFPA 13.
 9. FIRESTOP ALL PIPE PENETRATIONS THRU RATED WALLS, CEILINGS AND FLOORS.
 10. PARTIAL SPRINKLER PLAN WITH HEAD LOCATION SHOWN BECAUSE OF CEILING REQUIREMENT. REMAINING BUILDING SHALL BE PROTECTED WITH A COMPLETE SPRINKLER SYSTEM.

SECOND FLOOR PLAN

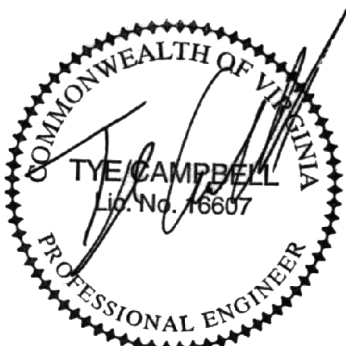
SCALE: 1/8" = 1'-0"

PARTIAL SECOND FLOOR PLAN - SPRINKLER HEAD

ARCHITECT/ENGINEERS:

SFCs

SFCs Inc. • 305 South Jefferson Street
Roanoke, Virginia 24011.2003
540.344.6664 • Fax 540.343.6925
www.sfc.com



Approved: Energy Engineer

CONSTRUCTION DOCUMENTS

Approved: Infection Control

Approved: Safety Manager

Approved: GEMS Coordinator

Approved: Service Chief

Approved: Chief of Staff

Approved: Associate Director

Drawing Title:
PARTIAL SECOND FLOOR PLAN - SPRINKLER HEADS

Approved: Chief of Facility Management Services

Approved: Medical Center Director

Project Title:
**Patient Dining Area CLC
VA Medical Center**
SFCs Commission Number: 6527.00

Location:
Salem, Virginia

Date:
03/15/12

Checked:
-

Drawn:
CMO

Project Number:
658-307

Building Number(s):
2/2A

Drawing Number:
SP1.1

Dwg. 48 of 65

**Office of
Construction
and Facilities
Management**

**Department of
Veterans Affairs**