

- DEMOLITION NOTES**
- REFER TO DRAWING C1 FOR DEFINITION OF BID ITEMS AND ALTERNATE BID ITEMS.
 - DEMOLITION OF ROADWAYS, WALKS AND CURBS SHALL NOT BE PERFORMED WHERE JACKING OR BORING IS USED TO CONSTRUCT NEW CONDUITS. SEE NOTE 28 ON DRAWING C1



ITEM TO BE REMOVED

1 REMOVE ASPHALTIC PAVING

2 REMOVE CURB TO NEAREST SUITABLE JOINT

3 REMOVE CONCRETE SIDEWALK TO NEAREST SUITABLE JOINT

4 REMOVE ASPHALTIC SIDEWALK

5 REMOVE CONCRETE LOADING DOCK

MARK	DESCRIPTION
------	-------------

1 REMOVE ASPHALTIC PAVING

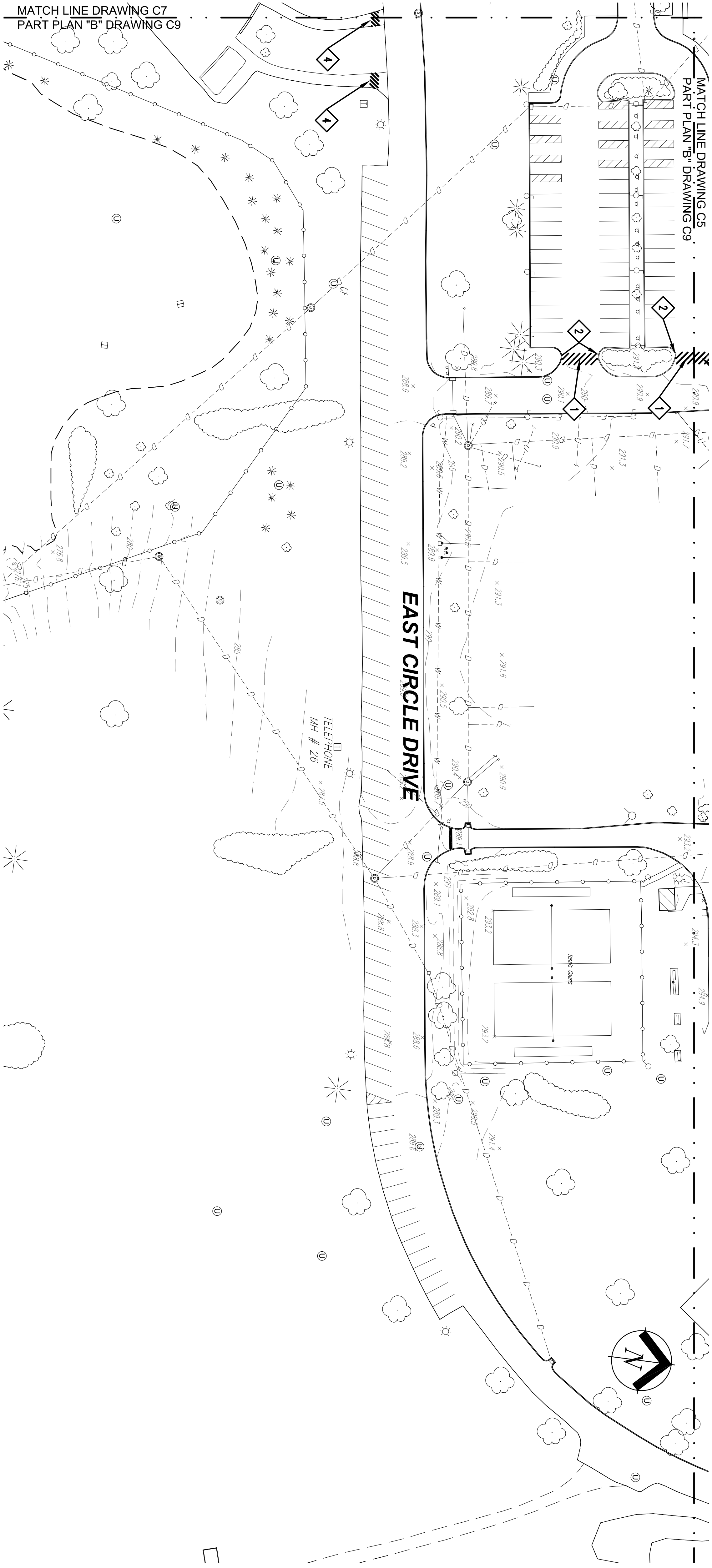
2 REMOVE CURB TO NEAREST SUITABLE JOINT

3 REMOVE CONCRETE SIDEWALK TO NEAREST SUITABLE JOINT

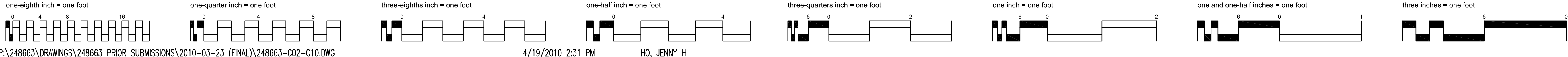
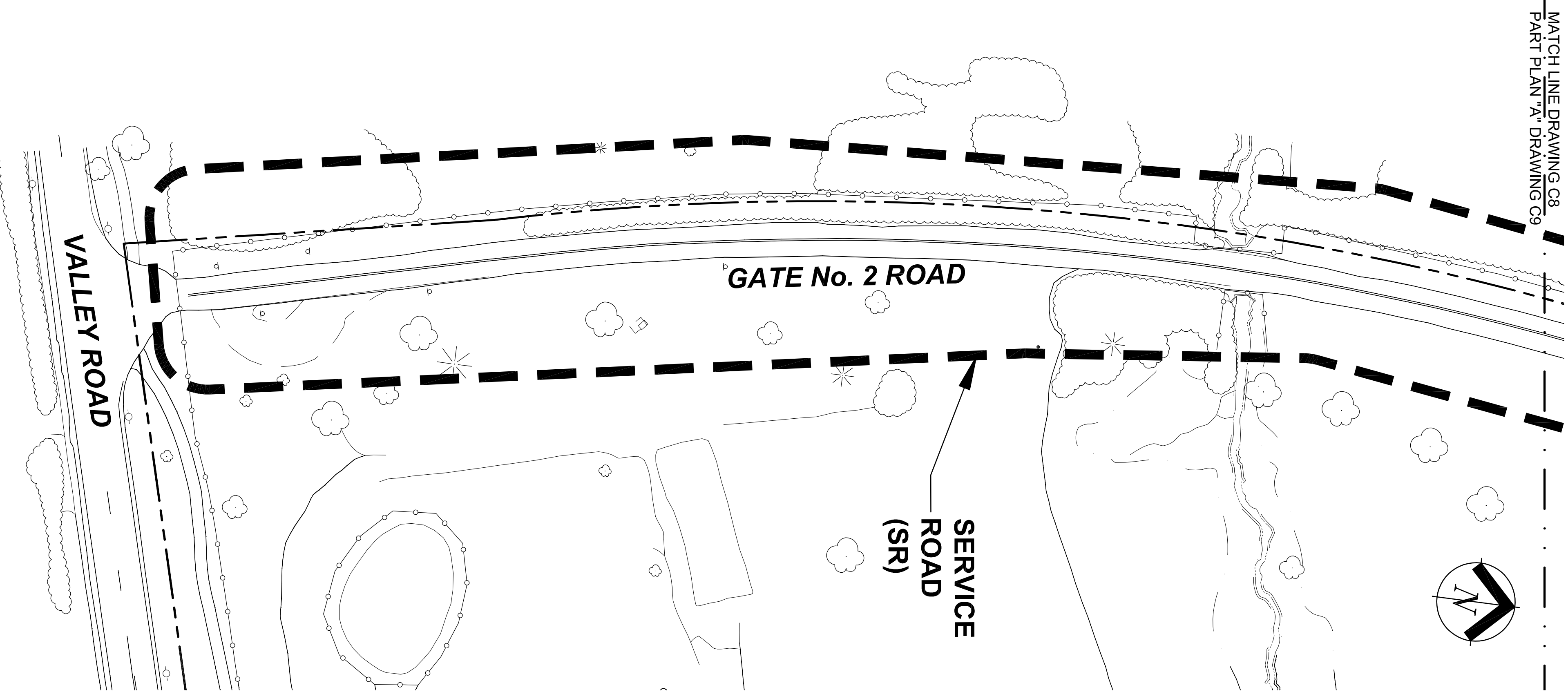
4 REMOVE ASPHALTIC SIDEWALK

5 REMOVE CONCRETE LOADING DOCK

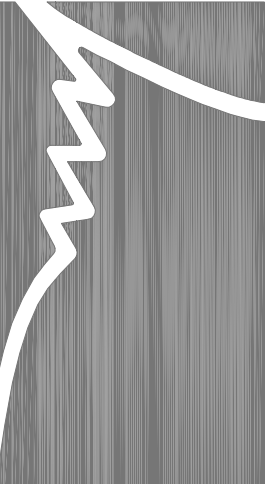
PART PLAN "B"



PART PLAN "A"



Revisions	Date




STAUNTON CHOW
A DIVISION OF
HATCH MOTT MACDONALD
545 Washington Blvd., Jersey City, NJ 07310

Drawing Title	Project Title
DEMOLITION SITE PLAN SHEET 8 OF 9	REPLACE SITE LIGHTING AT VA LYONS CAMPUS


Approved: Division Chief	Building Number	Checked	Drawn
Approved: Service Director	88	SG	YT

Location	VA Lyons Campus, NJHCS, Lyons, NJ
----------	-----------------------------------

Date	23 MARCH, 2010
Project No.	66144-08-103
Drawing No.	C9
Sh. 10 of 29	



Office of Facilities



Department of Veterans Affairs