

NEW WORK KEYNOTES

MARK DESCRIPTION SEE DETAIL

- 1

REPLACE ASPHALTIC PAVEMENT.

A

C11(C20)
- 2

RESTORE CURB TO MATCH EXISTING.

B

C11(C20)

OR

C

C11(C20)
- 3

RESTORE DEPRESSED CURB TO MATCH EXISTING

D

C11(C20)
- 4

RESTORE CONCRETE SIDEWALK TO MATCH EXISTING

E

C11(C20)
- 5

RESTORE ASPHALT SIDEWALK TO MATCH EXISTING

F

C11(C20)
- 6

BORE OR JACK UNDER BUILDING

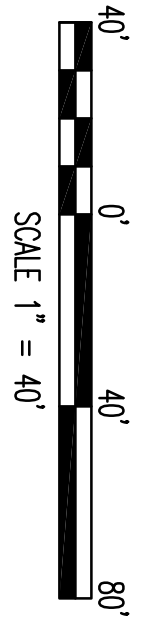
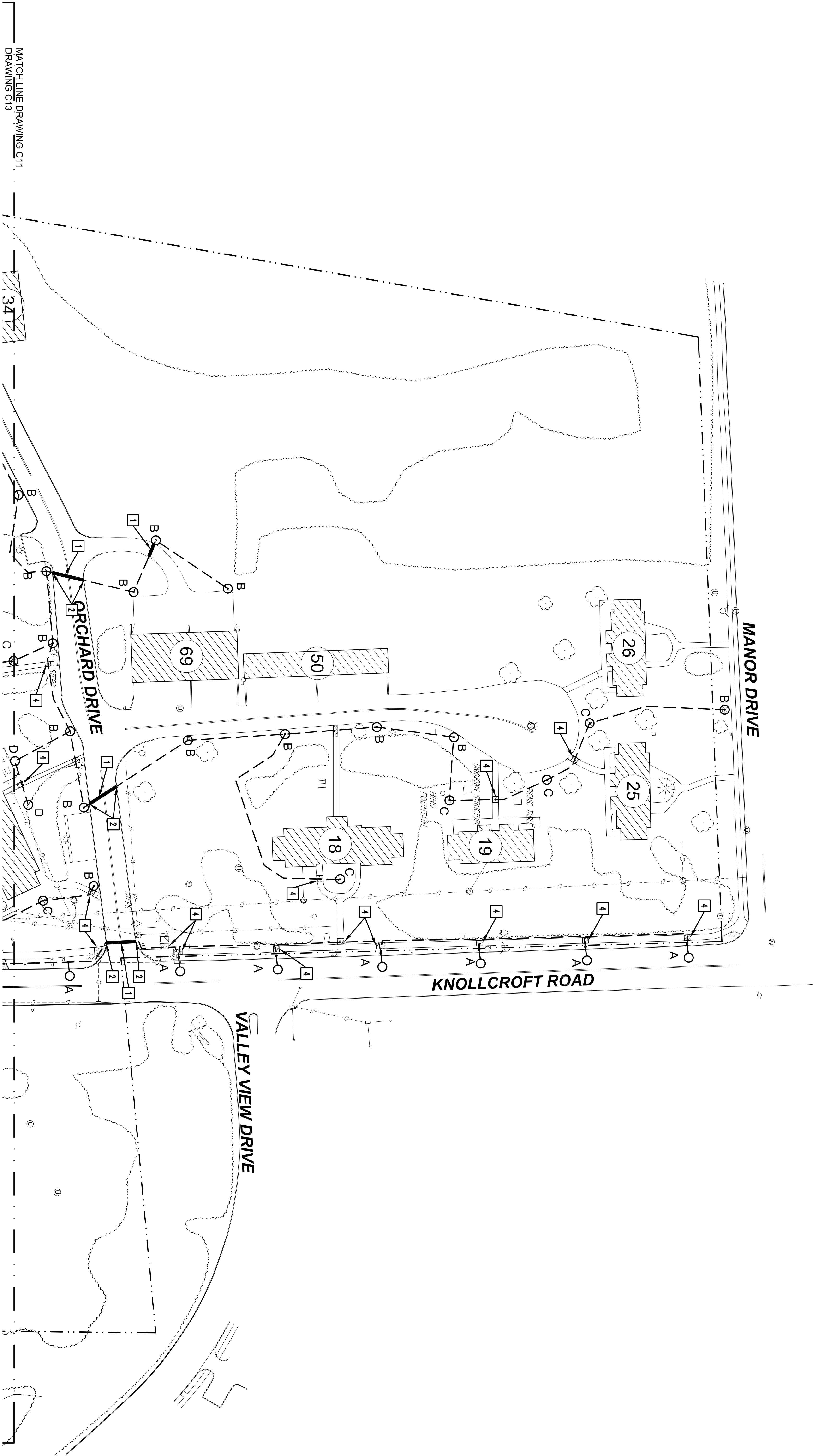
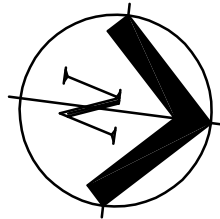
N/A
- 7

HAND HOLE

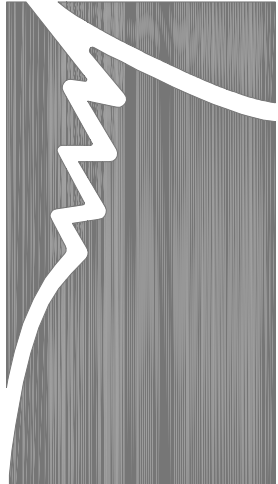
SEE ELECTRICAL DRAWINGS

NOTES

1. REFER TO DRAWING C1 FOR DEFINITION OF BID ITEMS AND ALTERNATE BID ITEMS.
2. FOR CONDUITS CROSSING ROADWAYS, SEE NOTE 28 ON DRAWING C1.



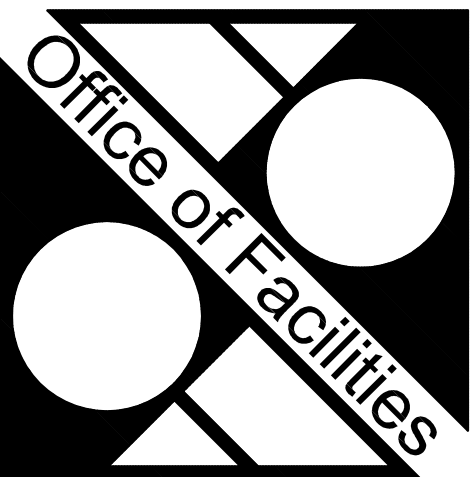
Revisions	Date	



STAUNTON CHOW  
A DIVISION OF  
HATCH MOTT MACDONALD  
545 Washington Blvd., Jersey City, NJ 07310

Drawing Title	Project Title
NEW WORK SITE PLAN SHEET 1 OF 9	REPLACE SITE LIGHTING AT VA LYONS CAMPUS
Approved: Division Chief	Building Number
Approved: Service Director	Checked: SG
	Drawn: YT
	Location: VA Lyons Campus, NJHCS, Lyons, NJ

Date	23 MARCH, 2010
Project No.	66144-08-103
Drawing No.	C11
	Sht. 12 of 29



Department of  
Veterans Affairs