




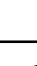
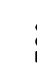



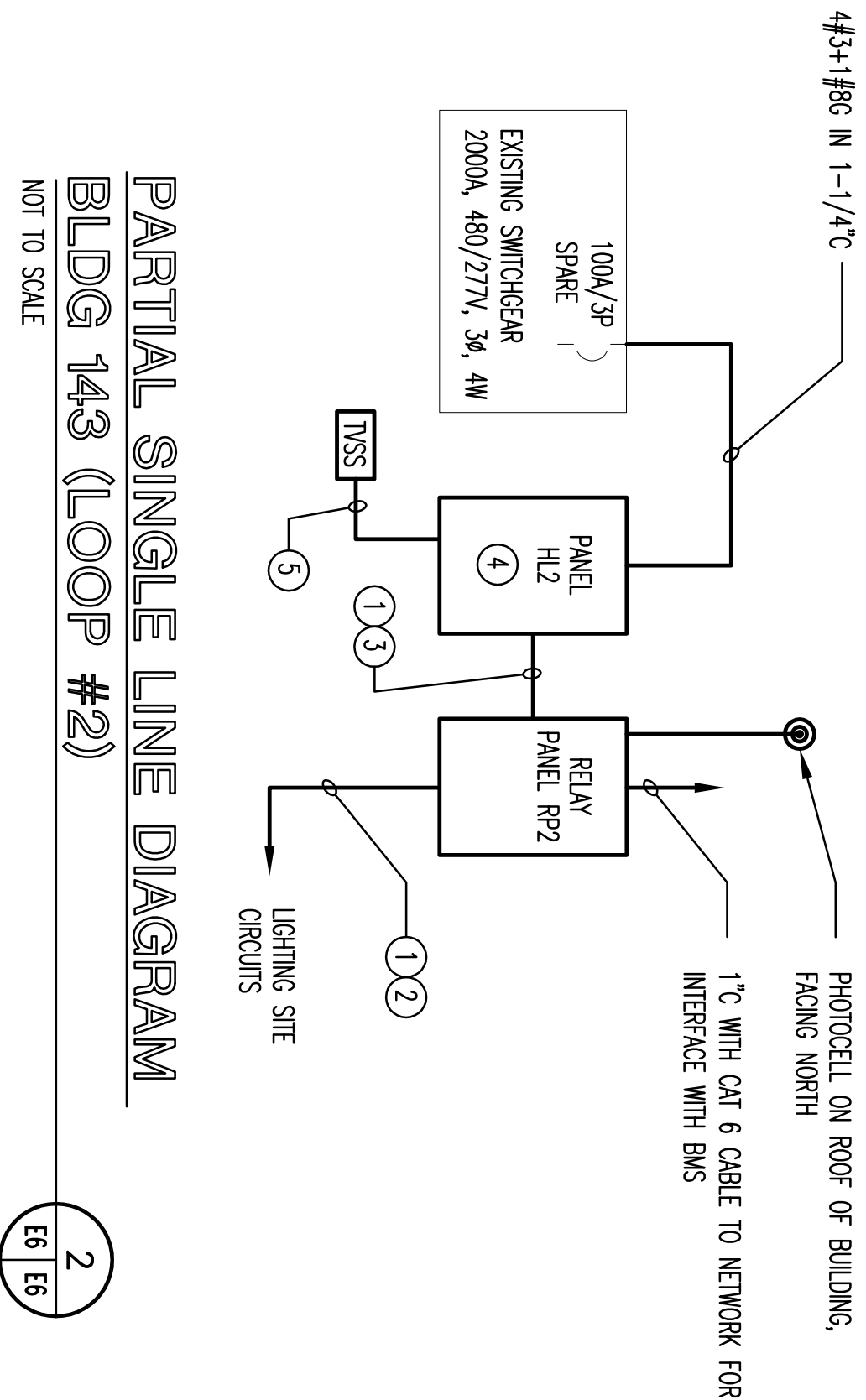
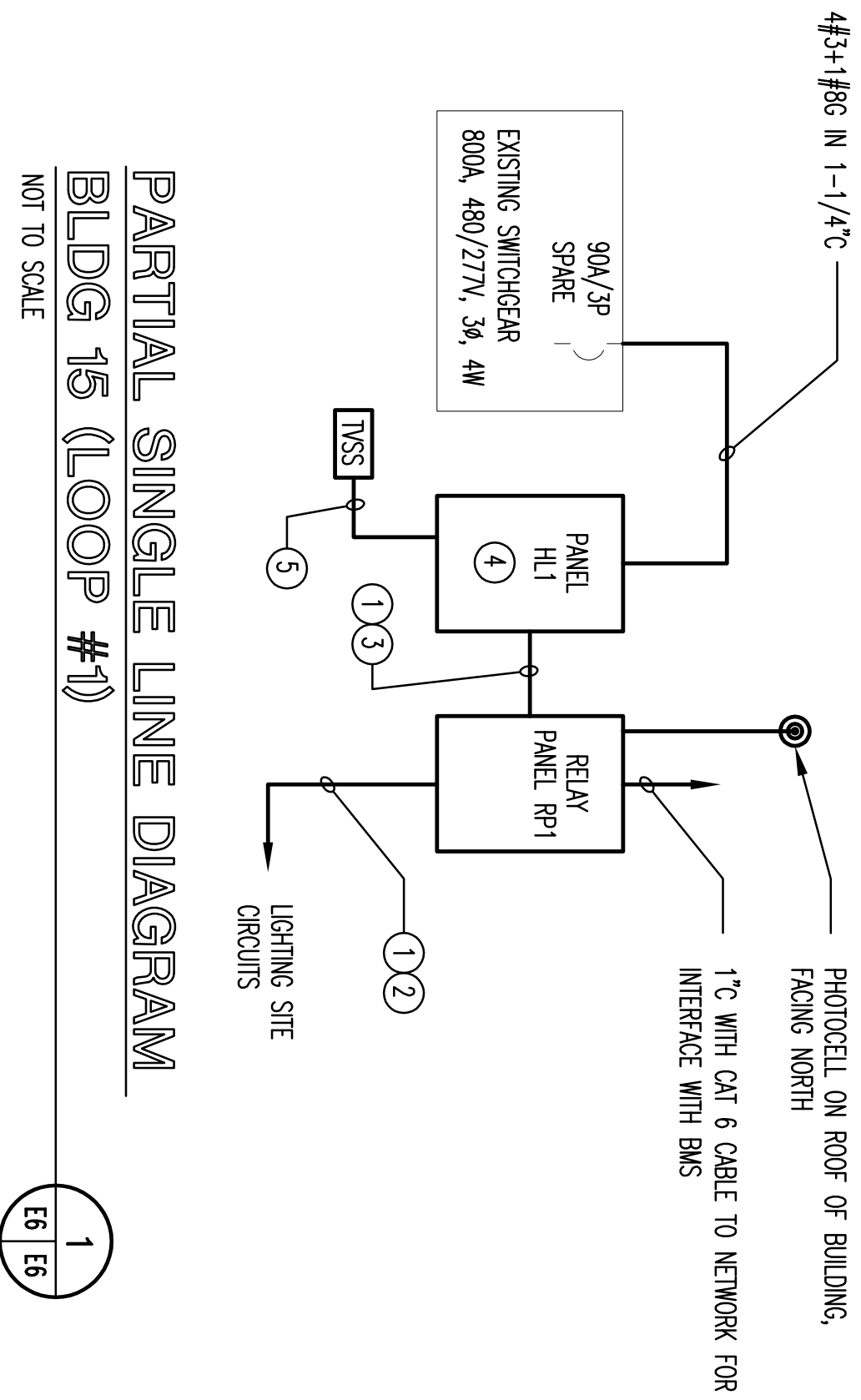
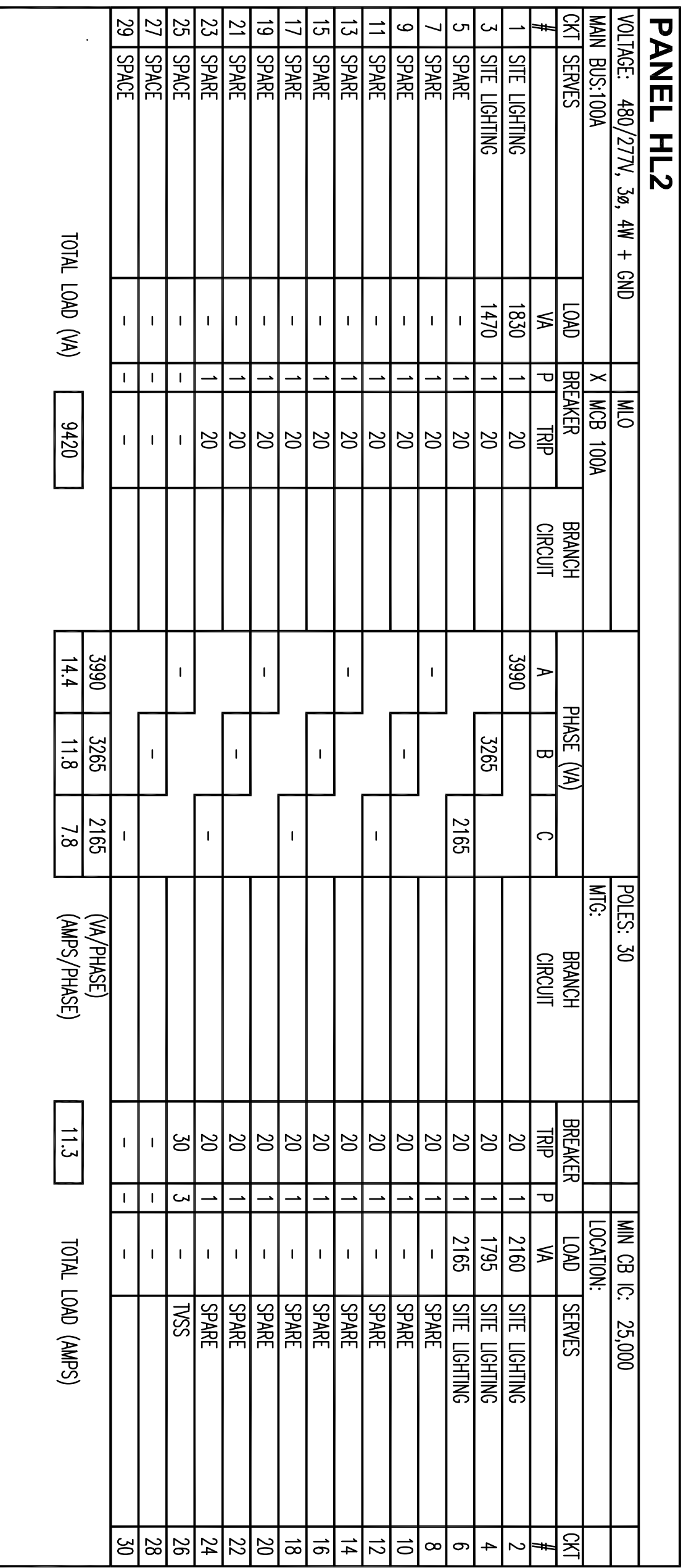


LIGHTING FIXTURE SCHEDULE

TYPE	SYMBOL	DESCRIPTION	LAMP	W/H EQUIVALENT	VOLTAGE	MOUNTING/POLE
A		PHILIPS LUMEC REANSSANCE SERIES-ROADWAY R120-SM-CM6-BKTX	(1) 82LED-63L6K	250W	277V	25' MOUNTING HEIGHT ARM-18X2-BKTX
A2		PHILIPS LUMEC REANSSANCE SERIES-PARKING R120-SM-CM6-BKTX	(2) 82LED-63L6K	250W	277V	25' MOUNTING HEIGHT ARM-18X2-BKTX TWIN - CUSTOM
B		PHILIPS LUMEC SERENADE DSX SERIES-ROADWAY AND PARKING S5662-SYX-COTX-BKTX	(1) 60LED-50L6K	175W	277V	16' MOUNTING HEIGHT R140-BKTX
C		PHILIPS LUMEC SERENADE DSX SERIES-WALKWAY S5662-SYX-BKTX	(1) 40LED-35L6K	100W	277V	12' MOUNTING HEIGHT R140-BKTX
D		PHILIPS LUMEC BOLLARD SERIES-BOLLARD FOR WALKWAY D0081-BKTX	(1) 40LED-35L6K	100W	277V	3'-6" BOLLARD
E		CARDIO DESIGNER FLOOD SERIES-FLOOD LIGHTING D71-S1-NSP-250W-LIM-BLP-F	(1) 250W MH	250W	277V	STANCHION MOUNT
F		BETA LIGHTING B9P SERIES WALL PACK B9PRLV1FT-250WPS-MT-BZ-F-P	(1) 250W MH	250W	277V	WALL MOUNTED
G		BETA LED LIGHTING - ROADWAY AND AREA BLDMCT130M-204-LED-B-UL-BK-F	INTERAL LED	250W	277V	20' MOUNTING HEIGHT PSSA17C1-BK
H		BEADON PRODUCTS WALL SCONCE TR430-AC-LED48-120V-MD3-PFC-SMF-BB	INTERAL LED	150W	120V	WALL MOUNTED/ INTERAL PHOTOCELL
HM		PHILIPS LUMEC-SCONCE ECUW-48LED-24-PH-RDXTX	INTERAL LED	100W	120V	WALL MOUNTED/ INTERAL PHOTOCELL




1. REFER TO SPACING EIT FOR NOTES, SYMBOLS, AND ABBREVIATIONS.
2. REFLECT PANELS SHALL INCLUDE (2) 1/4" ON/OFF RELAYS RATED 277V/30A MINIMUM PROGRAMMABILITY FOR REMOTE AND REMANUFACTURED, THREE-COIL OPERATION, INTERLOCK CAPABILITY WITH PROTOCOL, AND INTERLOCK CAPABILITY WITH EXISTING SITE DMS FOR MONITORING OF ENERGY USAGE.
3. LETTERS ADJACENT TO LIGHTING FIXTURES INDICATE TYPE.

KEY NOTES:

- ① REFER TO PANEL SCHEDULES AND RAININGS E-4 AND E-5 FOR LIGHTING CIRCUIT DESIGNATIONS.
- ② REFER TO RAININGS E-4 AND E-5 FOR CONDUCTOR AND CONDUIT SIZE.
- ③ MATCH #10 CONDUCTORS FOR LIGHTING CIRCUITS BETWEEN POWER PANEL AND RELAY PANEL.
- ④ WIRE AC RATING OF EXISTING PANEL UTILIZED TO FEED PANELS HL1 AND HL2.
- ⑤ UTILIZE 4#10 + 1#100 IN 3/4" CONDUIT.
- ⑥ TMS, 480/277V, 800/4F6, HARMONE (394H4N6) MOUNTED ADJACENT TO PANELBOARD, SINGLE ENERGY RATING 9200, JULIUS, NLS SURGE RESPONSE TIME, NLS, PROVIDE UL LISTED DEVICE WITH UL 1449 VSS RATING OF 700JLS.

Revisions	Date



STANTON CHOW
A DIVISION OF
HATCH MOTT MACDONALD
545 Washington Blvd., Jersey City, NJ 07310

Keep Plan

Drawing Title

**ELECTRICAL
PARTIAL SINGLE LINE DIAGRAMS
AND SCHEDULES**

Approved : Division Chief

Approved : Service Director

Project Title	<h1> REPLACE SITE LIGHTING AT VA LYONS CAMPUS </h1>		
Location	Building Number	Checked IB	Drawn CDC
VA Lyons Campus, NulHCS, Lyons, NJ			

Date
23 MARCH, 2010

Project No.
581A4-08-103

Drawing No.
E6

Sht. **25** of **29**

