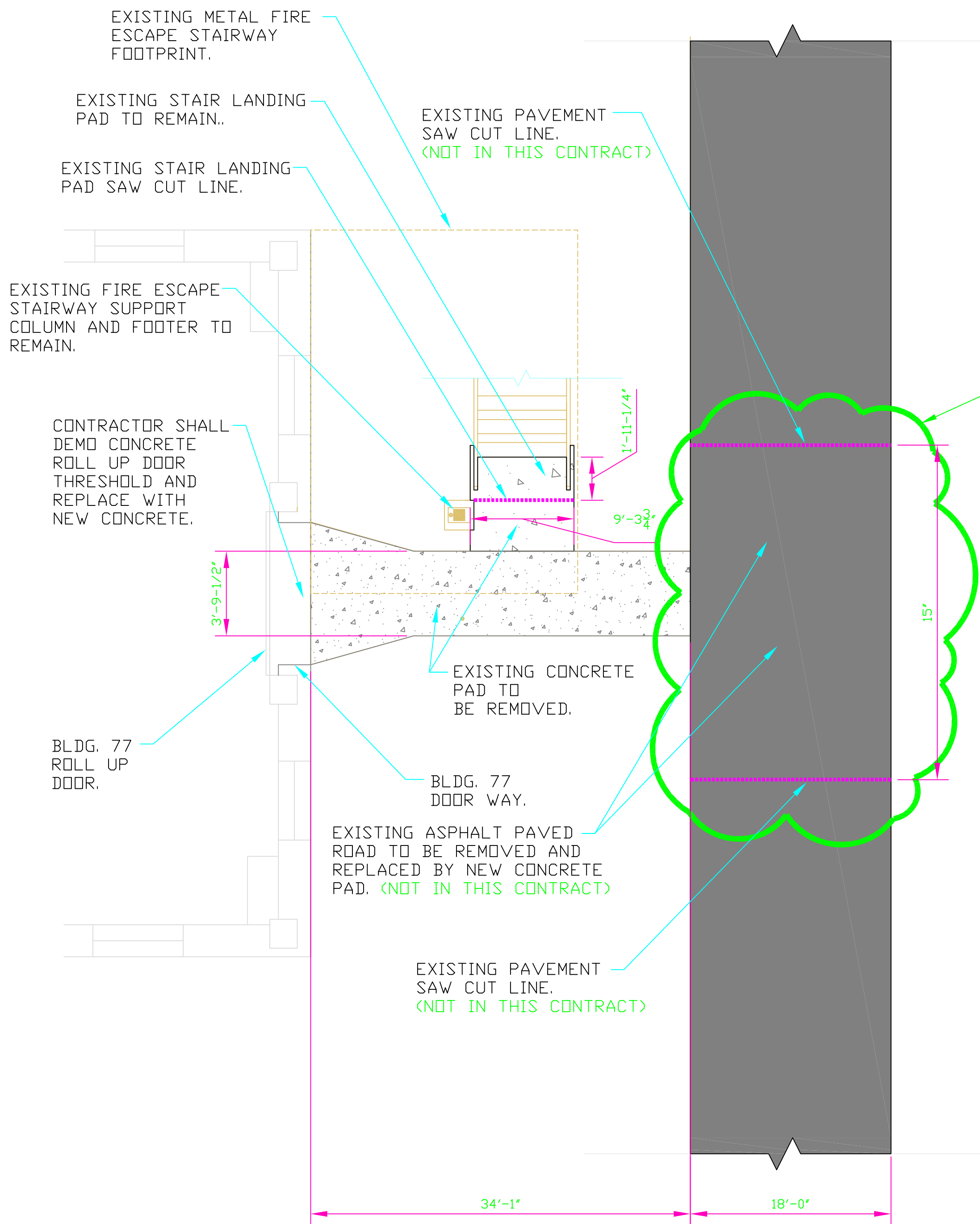


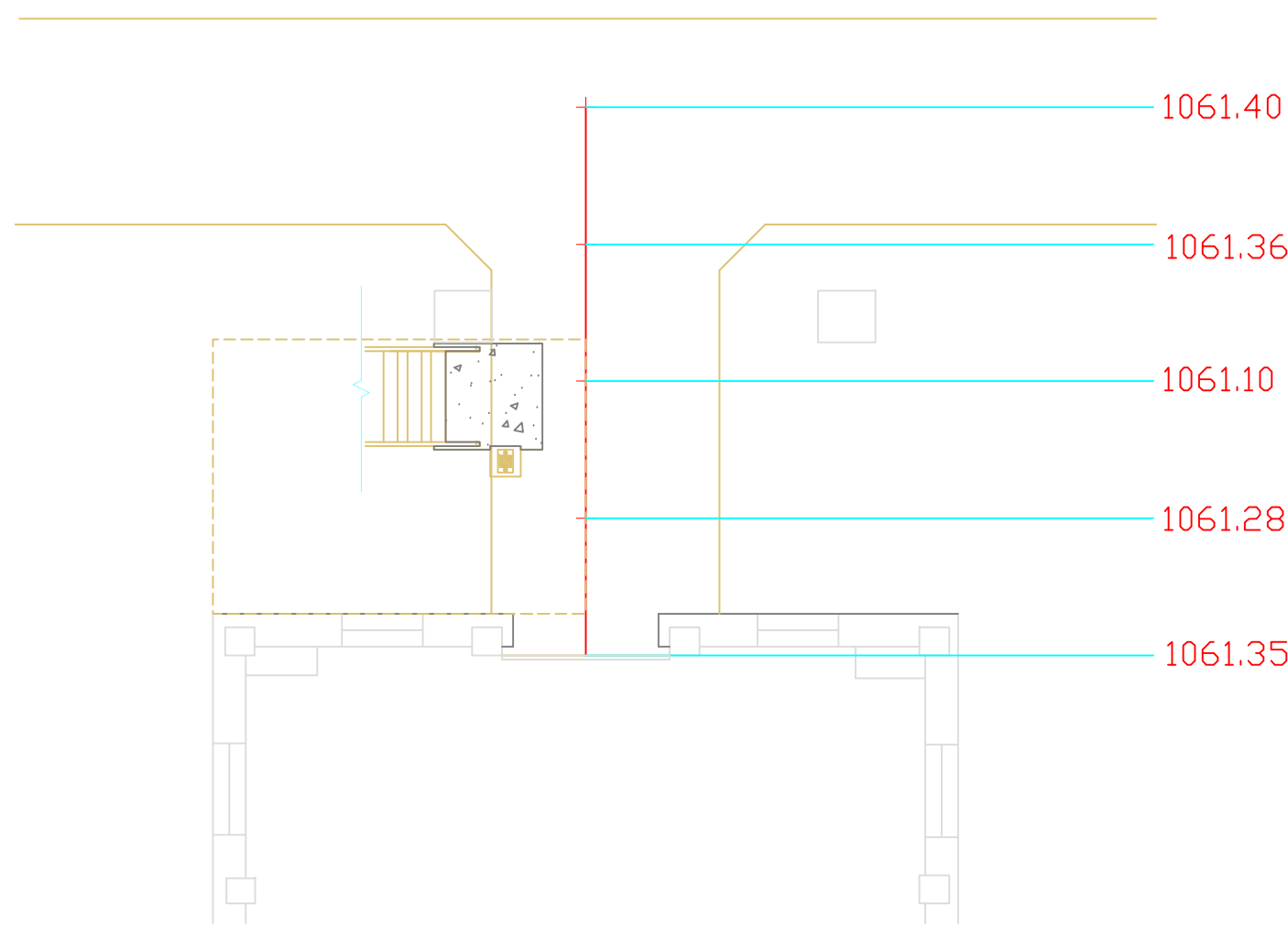
three inches = one foot
one and one-half inches = one foot
one inch = one foot
three-quarters inch = one foot
one-half inch = one foot
three-eighths inch = one foot
one-quarter inch = one foot
one-eighth inch = one foot



BLDG. 77 PLAN VIEW OF EXISTING CONCRETE PAD TO BE REMOVED.
NO SCALE

LEGEND (ALL SHEETS)

- EXISTING UNDISTURBED SOIL ELEVATION.
- EXISTING ASPHALT PAVEMENT ELEVATION.
- NEW 6" CONCRETE PAD ELEVATION.
- EXISTING GRAVEL ROADBED.
- NEW GRAVEL ROADBED.
- EXISTING ASPHALT PAVEMENT ROAD.
- NEW CONCRETE PAD AND SCISSOR DOCK TRUCK PIT.
- NEW CONCRETE 6" CURB AND 1'-0" GUTTER.
- NEW STEEL LAYOUT FOR CONCRETE PAD.
- EXISTING CONCRETE PAD.

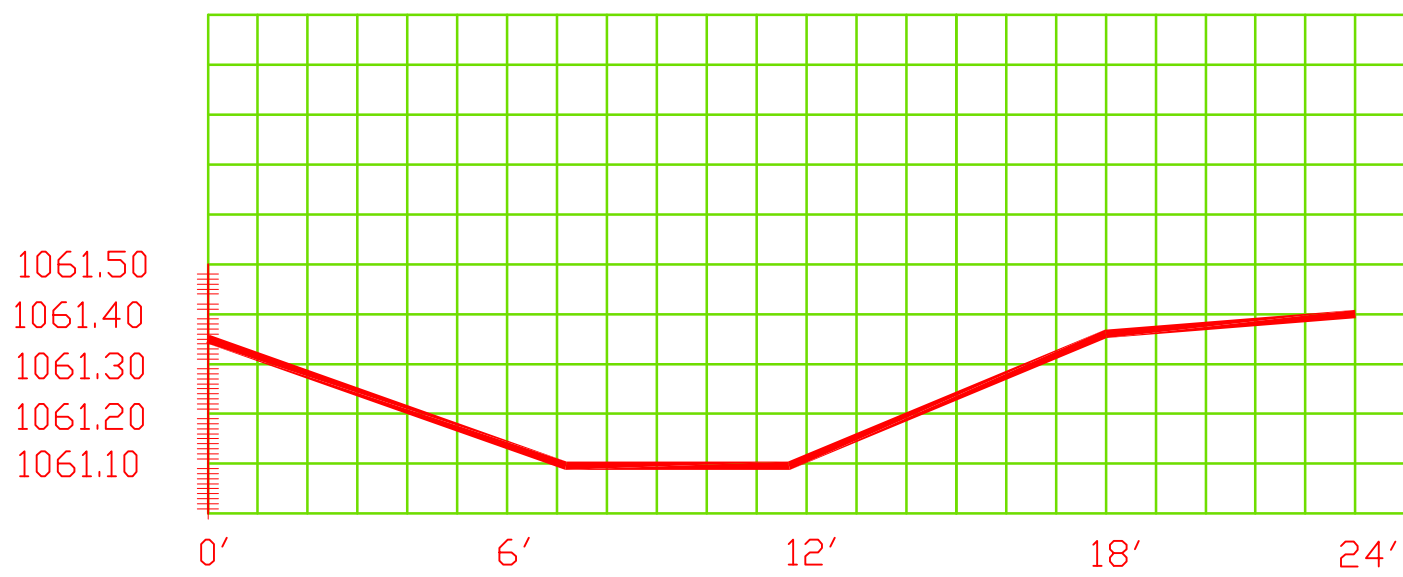


BLDG. 77 PLAN VIEW OF ELEVATIONS EXISTING GIP ROLL UP DOOR SIDEWALK.
NO SCALE

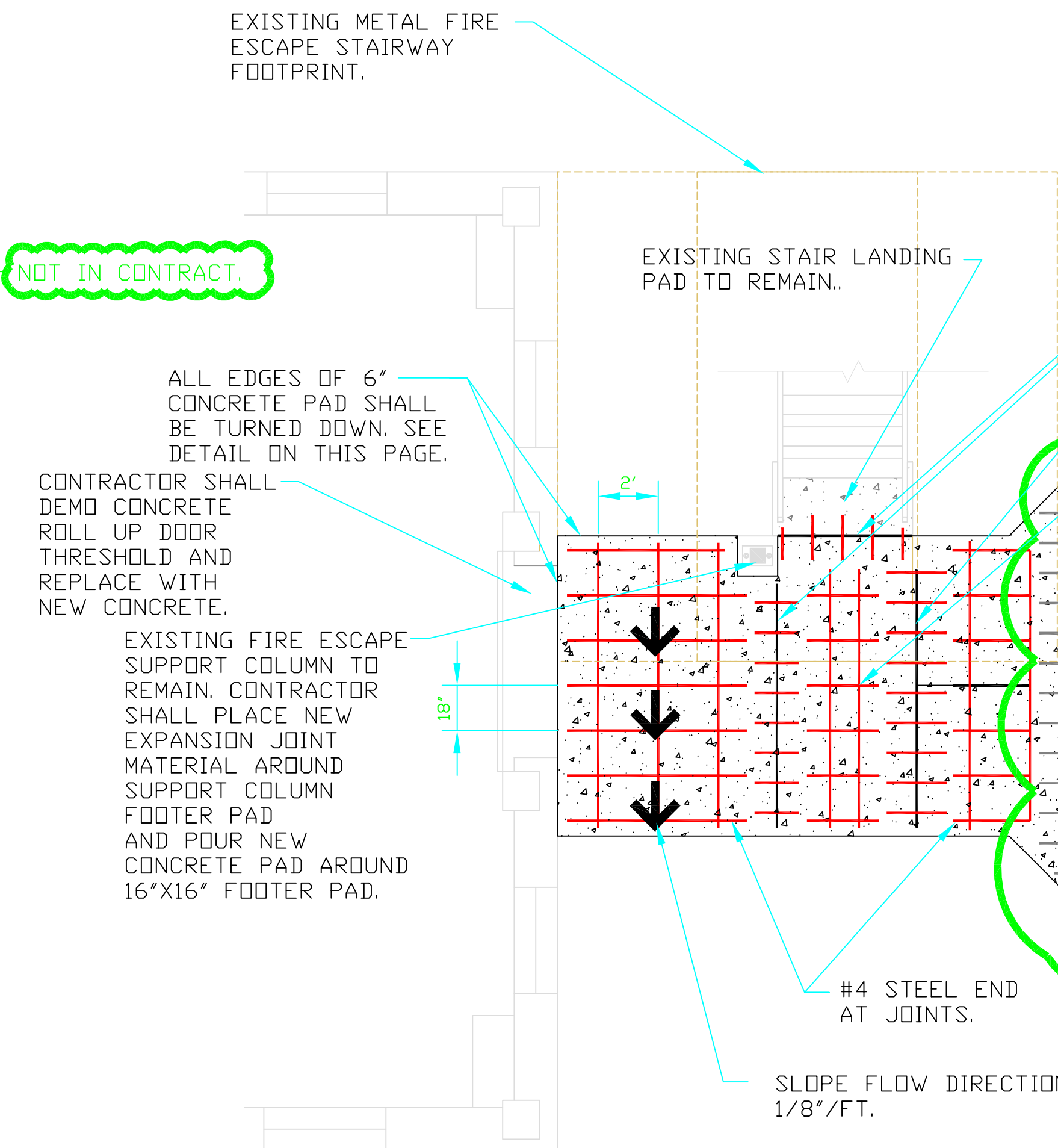
EXISTING FOOTER NOTE:

EXISTING FIRE ESCAPE STAIRWAY SUPPORT COLUMN TO REMAIN. CONTRACTOR SHALL PLACE NEW EXPANSION JOINT MATERIAL AROUND SUPPORT COLUMN FOOTER PAD AND POUR NEW CONCRETE PAD AROUND EXISTING 16"x16" FOOTER PAD.

BLDG. 77 DIMENSIONS FOR NEW CONCRETE PAD AT GIP ROLL UP DOOR ENTRANCE.
NO SCALE



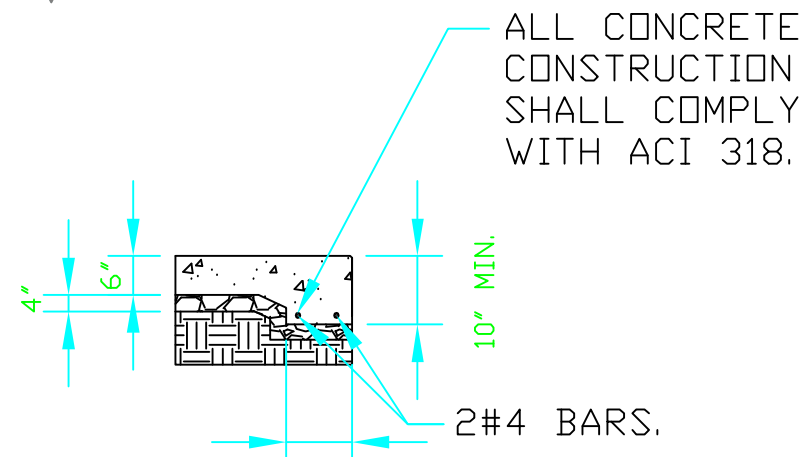
BLDG. 77 ELEV. OF EXISTING GIP ROLL UP DOOR CONCRETE PAD.
NO SCALE



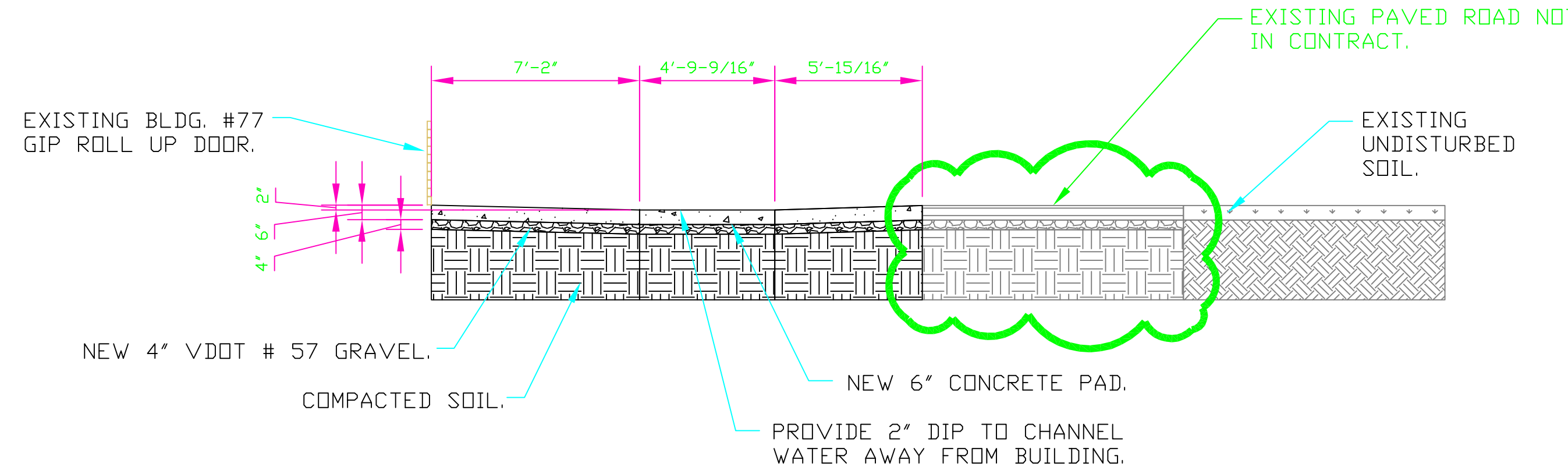
BLDG. 77 NEW CONCRETE PAD AT GIP ROLL UP DOOR ENTRANCEPLAN VIEW.
NO SCALE

CONCRETE NOTE:
ALL CONCRETE CONSTRUCTION SHALL COMPLY WITH ACI 318 AND ATTACHED SPECIFICATIONS. COMPRESSIVE STRENGTH 4000 + PSI WITH 6% TO 7% AIR ENTRAINMENT.

- EXPANSION JOINTS EVERY 19'-0". TYP. 18" LONG 3/4" DOWELS AT 1'-0" SPACING (PAINT AND OIL ONE END). (TYPICAL).
- STEEL LAYOUT TYPICAL. EXTEND STEEL TO WITHIN 3" OF JOINT EDGES, BUT NOT THROUGH JOINTS.
- FINISH GRADE TO MATCH EXISTING PAVEMENT GRADE AND SLOPE FOR NEW PAD AREA THAT IS PART OF EXISTING ROAD.
- SAVED CONTRACTION JOINT MAX 19'-0" SPACING. (TYPICAL).
- ALL EDGES OF 6" CONCRETE PAD SHALL BE TURNED DOWN. SEE DETAIL ON THIS PAGE.
- #4 STEEL END AT JOINTS.
- SLOPE FLOW DIRECTION 1/8"/FT.



BLDG. 77 & 169 MODULAR STORAGE BLDG. NEW CONCRETE PAD TYP. TURNDOWN.
NO SCALE



BLDG. 77 ELEV. OF NEW GIP ROLL UP DOOR SIDEWALK.
NO SCALE

DEDUCT ALTERNATE 1; THIS SHEET

CHANGED DIMS ON CONCRETE TURNDOWN V.J.	08-10-12
CHANGED DIMS & ADDED CONCRETE THRESHOLD TO PROJECT V.J.	08-10-12
Revisions	Date

Approved: Service Chief	Drawing Title BLDG. 77 EXISTING CONCRETE PAD DEMO AND REINSTALLATION.	Project Title INSTALL ACCESS TO BLDG. 77 & 169.	Date 8/3/12	Veterans Affairs
Approved: Chief of Staff		Building Number 77-169	Checked WGJ	
Approved: Associate Director		Location VAMC SALEM, VIRGINIA	Drawn WBJ	
			DRAWING NO. C1 2546B Dwg. 2 Of 6	