



ATTACHMENT 08

DRAWINGS

(Schwab Engineering)

600-14-130

PS100-1

1 page

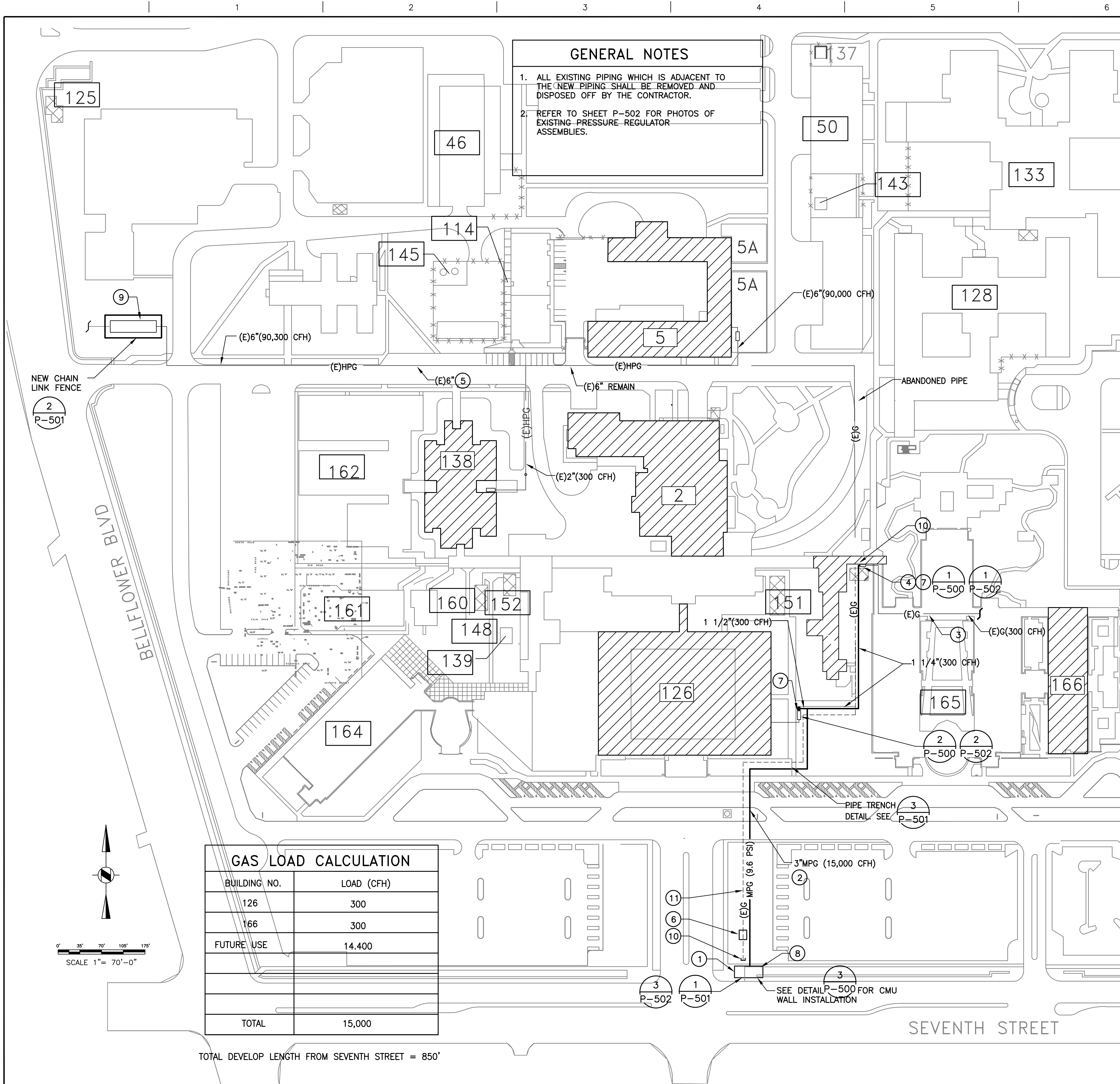
28 February 2017

Long Beach, California VA Health Care System (600)

Natural Gas Piping Correction

CONSTRUCTION

three inches = one foot
one and one half inches = one foot
one inch = one foot
three quarters inch = one foot
one half inch = one foot
three eighths inch = one foot
one quarter inch = one foot
one eighth inch = one foot



NATURAL GAS SITE PIPING INSTALLATION

SCALE: 1" = 70'-0"

ARCHITECT/ENGINEERS/CONSULTANTS:

Schwab
Engineering & Management
A Certified SB/DVBE Firm
1000 E. Walnut Street, Suite 227, Pasadena, CA 91106
t: 888.900.3823 f: 626.463.2739 www.schwabeng.com
Project No.: 0214.767.00



Drawing Title
NATURAL GAS SITE PIPING
INSTALLATION PLAN

Project Title
SITE NATURAL GAS PIPING
CORRECTIONS

Project Number
600-14-130
Building Number
SITE - B126, AND B166

Office of
Facilities
Management

Location VA LONG BEACH HEALTHCARE SYSTEM
5901 E SEVENTH ST, LONG BEACH, CA 90822

Date
02/28/17
Checked
SN
Drawn
KM

Drawing Number
PS100-1
Dwg. 2 of 5

