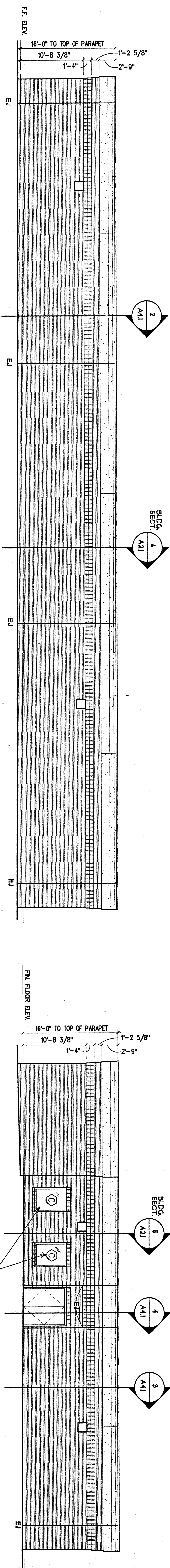


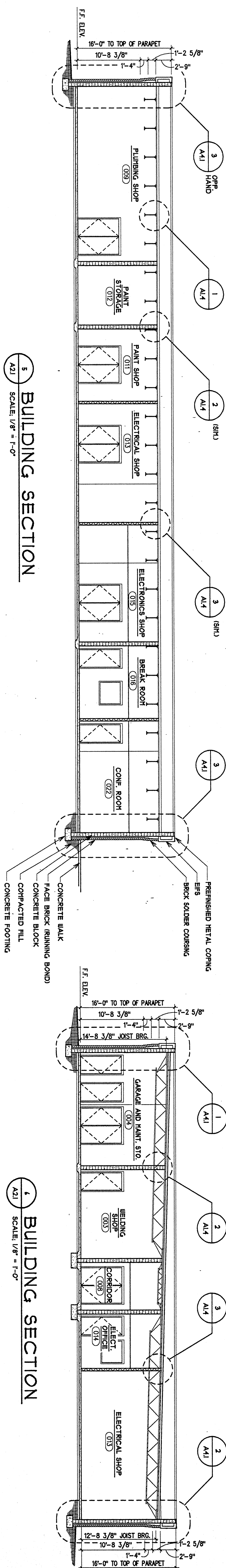
— EAST ELEVATION —

2 NORTH ELEVATION
A2.1 SCALE: 1/8" = 1'-0"



WEST ELEVATION

1 SOUTH ELEVATION



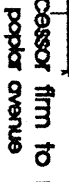
5
A2.1

BUILDING SECTION

SCALE: 1/8" = 1'-0"

BUILDING SECTION

GENERAL NOTES:



COLEMAN
FOSTER
architects
incorporated
c/o 1912

successor firm to mchdon and shoppey architects, inc.
657 poplar avenue suite 603 montreal, la 819 707/88-97/90
Charles E. Coleman, AIA - President
Barbara Ann, AIA - President



BUILDING ELEVATIONS AND BUILDING SECTIONS

ENGINEERING SHOPS BUILDING

1000000

2. ~~A~~

Veterans
Administration