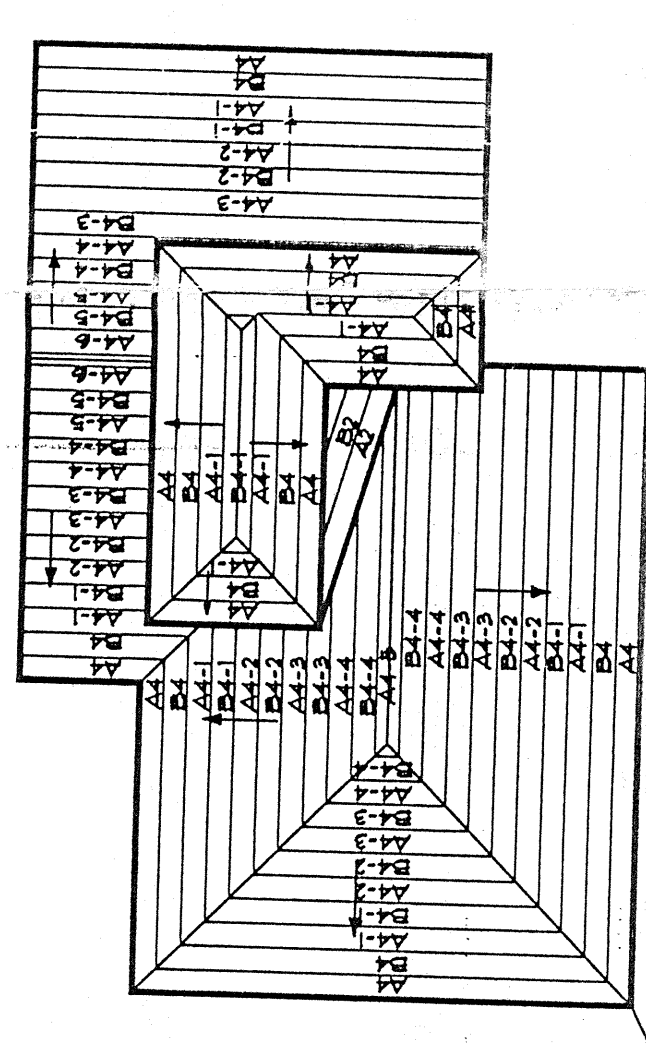
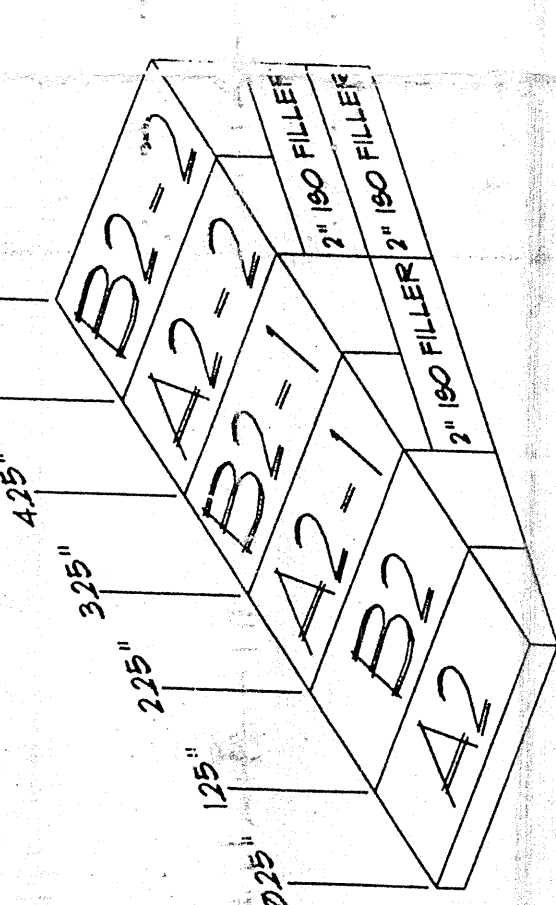


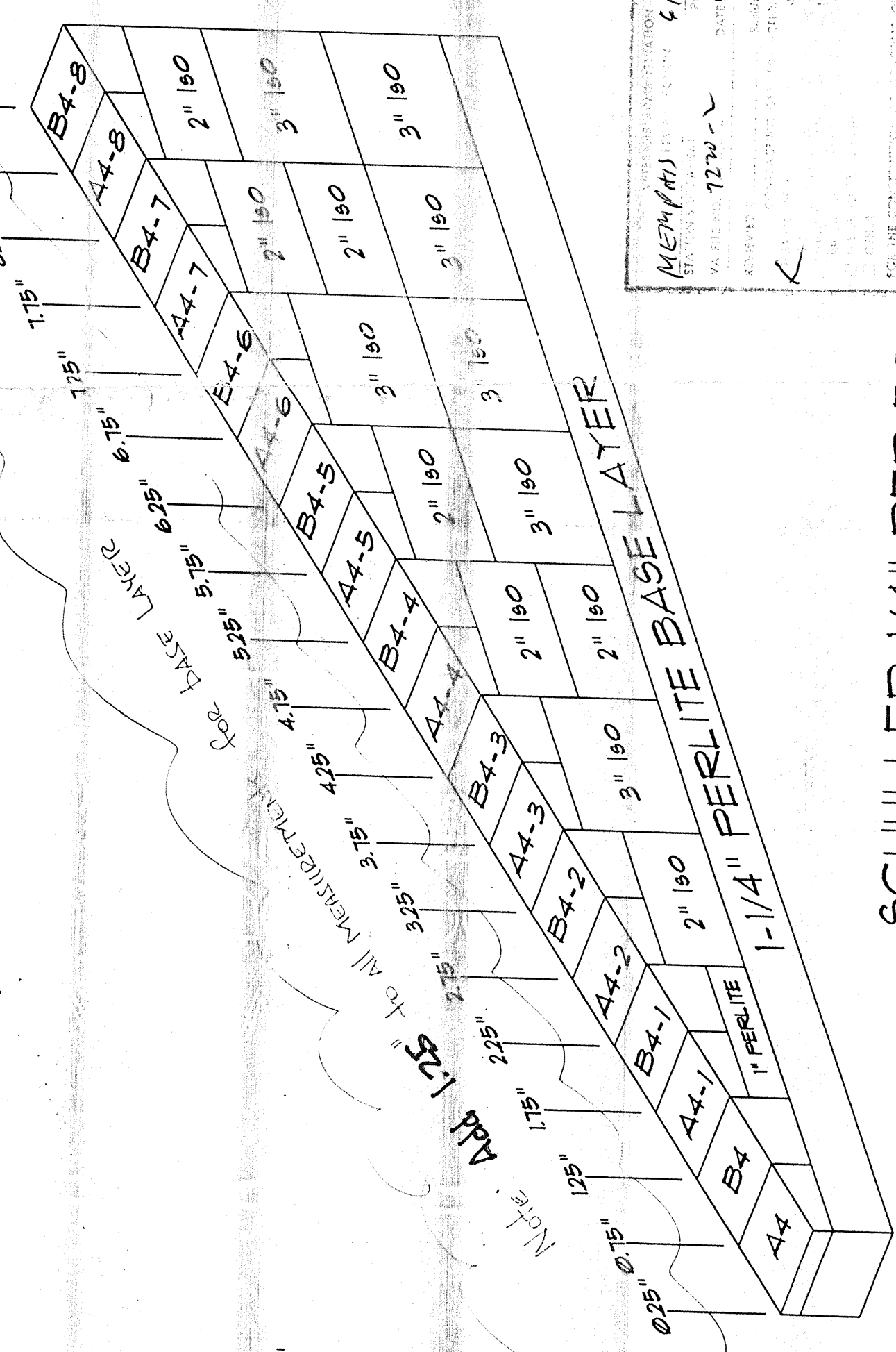
MECHANICAL & ELEVATOR
PENTHOUSE



MECHANICAL & ELEVATOR
PENTHOUSE



CRICKETS
SCHULLER - 1/2" PER FOOT
NOT TO SCALE
1/2" PER FOOT 2" PANELS



MEMPHIS
6/14/01
7/20/01
6/23/01

SCHULLER 1/4" PER FOOT
NOT TO SCALE 1/4" PER FOOT 2" PANELS

IMPORTANT: As a supplier of materials, Bracco assumes no responsibility for errors in design, engineering, or construction. Contractor must verify field dimensions, drain locations, and shop drawings must be approved. Shipments of materials, if any crickets are made in the job criteria shown, or on the original quote form, Bracco reserves right to resubmit bid.

Approvals:
Date:
Notes:

PENTHOUSE ROOF PLAN
SEISMIC/REINFORCEMENT - PHASE ONE
LOCATION: WAC - MEMPHIS TN
CONTRACTOR: CAPITAL ROOFING (305) 841-5325 Fax (305) 841-5377
MATERIAL: TAPERED PERLITE
CRICKET SLOPE: 1/2" PER FT
FILL INSULATION: 1" PERLITE 2" 4 3" 150
BASE INSULATION: 1-1/4" PERLITE
AVERAGE "R": 215

TAPERED ENGINEERING
DIVISION
Bracco Supply Corp
7392 Haverhill Road, West Palm Beach, FL 33047
Tel: (800) 594-3003 Fax: (561) 881-3829

JOB NO: 96-1319A-V2
SCALE: 1/16" = 1'-0"
DATE: 1/30/97
DRAWN BY: AEG
PAGE 1 OF 1