

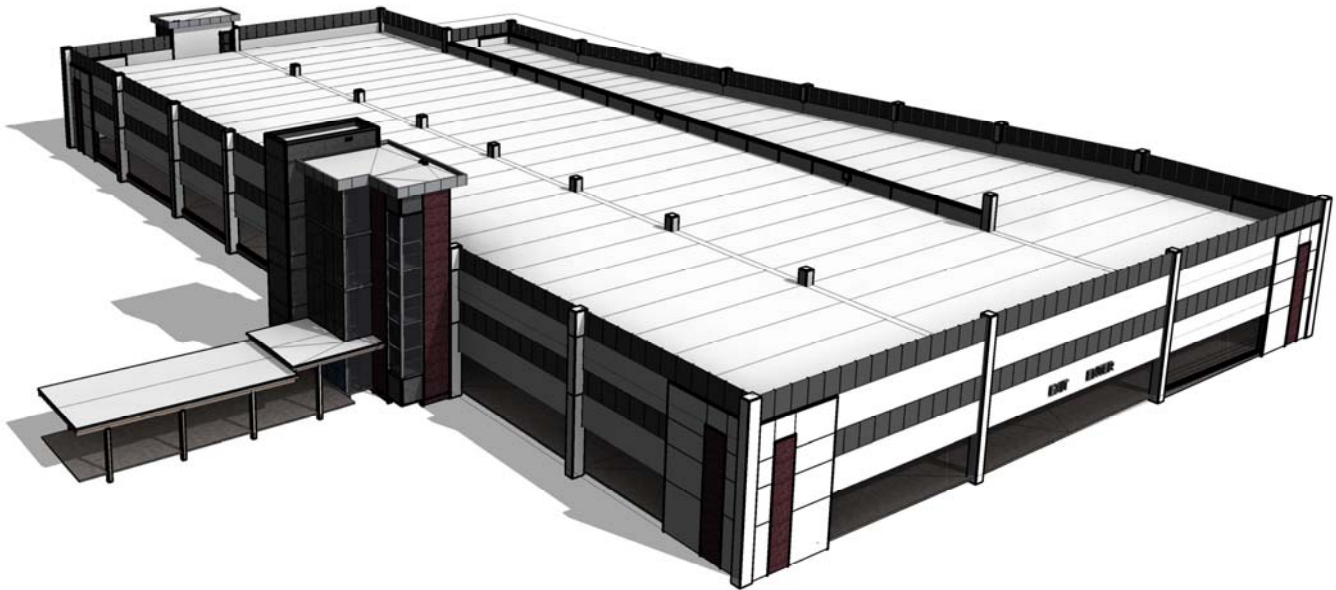
PARKING SAFETY

Project # 659-18-206

For the
Department of Veterans Affairs
W.G. (Bill) Hefner Veterans Medical Center
Salisbury, NC 28144

PROJECT MANUAL

BID SET



1/31/2018

SPECIFICATIONS

**SECTION 00 01 10
TABLE OF CONTENTS**

VOLUME 1

	DIVISION 00 – SPECIAL SECTIONS
00 01 15	List of Drawing Sheets
	DIVISION 01 – GENERAL REQUIREMENTS
01 00 00	General Requirements
01 33 23	Shop Drawings, Product Data, and Samples
01 35 26	Safety Requirements
01 42 19	Reference Standards
01 57 19	Temporary Environmental Controls
01 74 19	Construction Waste Management
	DIVISION 05 – METALS
05 50 00	Metal Fabrications
05 70 00	Wire Metal Mesh

SECTION 00 01 15
LIST OF DRAWING SHEETS

The drawings listed below accompanying this specification form a part of the contract.

<u>Drawing No.</u>	<u>Title</u>
GI001	TITLE PAGE
AS101	LEVEL 1 PLAN
AS102	LEVEL 1 PLAN
AS301	BUILDING ELEVATIONS
AS302	BUILDING ELEVATIONS
AS411	WALL SECTIONS
-- END --	

SECTION 01 00 00
GENERAL REQUIREMENTS

TABLE OF CONTENTS

1.1 GENERAL INTENTION	1
1.2 STATEMENT OF BID ITEM(S).....	2
1.3 SPECIFICATIONS AND DRAWINGS FOR CONTRACTOR.....	3
1.4 CONSTRUCTION SECURITY REQUIREMENTS.....	3
1.5 FIRE SAFETY.....	5
1.6 OPERATIONS AND STORAGE AREAS	8
1.8 INFECTION PREVENTION MEASURES.....	13
1.9 DISPOSAL AND RETENTION	15
1.10 PROTECTION OF EXISTING VEGETATION, STRUCTURES, EQUIPMENT, UTILITIES, AND IMPROVEMENTS.....	16
1.11 RESTORATION	18
1.12 PHYSICAL DATA	19
1.13 PROFESSIONAL SURVEYING SERVICES	19
1.14 LAYOUT OF WORK.....	19
1.15 AS-BUILT DRAWINGS.....	21
1.16 USE OF ROADWAYS.....	21
1.17 TEMPORARY USE OF MECHANICAL AND ELECTRICAL EQUIPMENT.....	22
1.18 TEMPORARY USE OF NEW ELEVATORS.....	23
1.19 TEMPORARY TOILETS.....	24
1.20 AVAILABILITY AND USE OF UTILITY SERVICES.....	24
1.21 NEW TELEPHONE EQUIPMENT.....	26
1.22 TESTS.....	26
1.23 INSTRUCTIONS.....	27

1.24 GOVERNMENT-FURNISHED PROPERTY 28

1.25 RELOCATED ITEMS 29

1.26 CONSTRUCTION SIGN..... 29

1.27 SAFETY SIGN 30

SECTION 01 00 00
GENERAL REQUIREMENTS

1.1 GENERAL INTENTION

- A. Contractor shall completely prepare site for building operations, including demolition and removal of existing structures, and furnish labor and materials and perform work for PARKING SAFETY as required by drawings and specifications.
- B. Visits to the site by Bidders may be made only by appointment with the Medical Center Engineering Officer.
- E. All employees of general contractor and subcontractors shall comply with VA security management program and obtain permission of the VA police, be identified by project and employer, and restricted from unauthorized access.
- F. Prior to commencing work, general contractor shall provide proof that a OSHA designated "competent person" (CP) (29 CFR 1926.20(b)(2)) will maintain a presence at the work site whenever the general or subcontractors are present.
- G. Training:
 - 1. All employees of general contractor or subcontractors shall have the 10-hour or 30-hour OSHA Construction Safety course and other relevant competency training, as determined by RE/COR acting as the Construction Safety Officer with input from the facility Construction Safety Committee.
 - 2. Submit training records of all such employees for approval before the start of work.

H. VHA Directive 2011-36, Safety and Health during Construction, dated 9/22/2011 in its entirety is made a part of this section

1.2 STATEMENT OF BID ITEM(S)

A. ITEM I, GENERAL CONSTRUCTION BASE BID: Work includes demolition, general construction and alterations of existing parking garage; construction of a fall deterrent screen and supporting structure. Furnish design of fall deterrent screen support and shop drawings signed and sealed by a registered PE

1.3 SPECIFICATIONS AND DRAWINGS FOR CONTRACTOR

A. AFTER AWARD OF CONTRACT, digital PDF sets of specifications and drawings will be furnished.

B. Additional sets of drawings may be made by the Contractor, at Contractor's expense.

1.4 CONSTRUCTION SECURITY REQUIREMENTS

A. Security Plan:

1. The security plan defines both physical and administrative security procedures that will remain effective for the entire duration of the project.
2. The General Contractor is responsible for assuring that all sub-contractors working on the project and their employees also comply with these regulations.

B. Security Procedures:

1. General Contractor's employees shall not enter the project site without appropriate badge. They may also be subject to inspection of their personal effects when entering or leaving the project site.
2. For working outside the "regular hours" as defined in the contract, The General Contractor shall give 3 days notice to the Contracting Officer so that security arrangements can be provided for the employees. This notice is separate from any notices required for utility shutdown described later in this section.

3. No photography of VA premises is allowed without written permission of the Contracting Officer.
4. VA reserves the right to close down or shut down the project site and order General Contractor's employees off the premises in the event of a national emergency. The General Contractor may return to the site only with the written approval of the Contracting Officer.

D. Key Control:

1. The General Contractor shall provide duplicate keys and lock combinations to the Resident Engineer for the purpose of security inspections of every area of project including tool boxes and parked machines and take any emergency action.
2. The General Contractor shall turn over all permanent lock cylinders to the VA locksmith for permanent installation. See Section 08 71 00, DOOR HARDWARE and coordinate.

E. Document Control:

1. Before starting any work, the General Contractor/Sub Contractors shall submit an electronic security memorandum describing the approach to following goals and maintaining confidentiality of "sensitive information".
2. The General Contractor is responsible for safekeeping of all drawings, project manual and other project information. This information shall be shared only with those with a specific need to accomplish the project.
3. Certain documents, sketches, videos or photographs and drawings may be marked "Law Enforcement Sensitive" or "Sensitive Unclassified". Secure such information in separate containers and limit the access to only those who will need it for the project. Return the information to the Contracting Officer upon request.
4. These security documents shall not be removed or transmitted from the project site without the written approval of Contracting Officer.
5. All paper waste or electronic media such as CD's and diskettes shall be shredded and destroyed in a manner acceptable to the VA.

6. Notify Contracting Officer and Site Security Officer immediately when there is a loss or compromise of "sensitive information".
7. All electronic information shall be stored in specified location following VA standards and procedures using an Engineering Document Management Software (EDMS).
 - a. Security, access and maintenance of all project drawings, both scanned and electronic shall be performed and tracked through the EDMS system.
 - b. "Sensitive information" including drawings and other documents may be attached to e-mail provided all VA encryption procedures are followed.

F. Motor Vehicle Restrictions

1. Vehicle authorization request shall be required for any vehicle entering the site and such request shall be submitted 24 hours before the date and time of access. Access shall be restricted to picking up and dropping off materials and supplies.
2. Separate permits shall be issued for General Contractor and its employees for parking in designated areas only. There will be no parking allowed on grass.

1.5 FIRE SAFETY

A. Applicable Publications: Publications listed below form part of this Article to extent referenced. Publications are referenced in text by basic designations only.

1. American Society for Testing and Materials (ASTM):

E84-2009.....Surface Burning Characteristics of Building
Materials

2. National Fire Protection Association (NFPA):

10-2010.....Standard for Portable Fire Extinguishers

30-2008.....Flammable and Combustible Liquids Code

51B-2009.....Standard for Fire Prevention During Welding,
Cutting and Other Hot Work

70-2011.....National Electrical Code

101-2012.....Life Safety Code

241-2009.....Standard for Safeguarding Construction,
Alteration, and Demolition Operations

3. Occupational Safety and Health Administration (OSHA):

29 CFR 1926.....Safety and Health Regulations for Construction

4. VHA Directive 2005-007

- B. Fire Safety Plan: Establish and maintain a fire protection program in accordance with 29 CFR 1926. Prior to start of work, prepare a plan detailing project-specific fire safety measures, including periodic status reports, and submit to COR for review for compliance with VHA Directive 2005-007, NFPA 101 and NFPA 241. Prior to beginning work, all employees of the contractor and/or any subcontractors shall undergo a safety briefing provided by the general contractor's competent person per OSHA requirements. This briefing shall include information on the construction limits, VAMC safety guidelines, means of egress, break areas, work hours, locations of restrooms, use of VAMC equipment, etc. Provide documentation to the Resident Engineer that all construction workers have undergone contractor's safety briefing.
- C. Site and Building Access: Maintain free and unobstructed access to facility emergency services and for fire, police and other emergency response forces in accordance with NFPA 241.
- D. Separate temporary facilities, such as trailers, storage sheds, and dumpsters, from existing buildings and new construction by distances in accordance with NFPA 241. For small facilities with less than 6 m (20 feet) exposing overall length, separate by 3m (10 feet).
- E. Temporary Construction Partitions:
3. Close openings in smoke barriers and fire-rated construction to maintain fire ratings. Seal penetrations with listed through-penetration firestop materials in accordance with Section 07 84 00, FIRESTOPPING.

- F. Temporary Heating and Electrical: Install, use and maintain installations in accordance with 29 CFR 1926, NFPA 241 and NFPA 70.
- G. Means of Egress: Do not block exiting for occupied buildings, including paths from exits to roads. Minimize disruptions and coordinate with COR.
- H. Egress Routes for Construction Workers: Maintain free and unobstructed egress. Inspect daily. Report findings and corrective actions weekly to COR.
- I. Fire Extinguishers: Provide and maintain extinguishers in construction areas and temporary storage areas in accordance with 29 CFR 1926, NFPA 241 and NFPA 10.
- J. Flammable and Combustible Liquids: Store, dispense and use liquids in accordance with 29 CFR 1926, NFPA 241 and NFPA 30.
- K. Standpipes: Install and extend standpipes up with each floor in accordance with 29 CFR 1926 and NFPA 241.
- M. Existing Fire Protection: Do not impair automatic sprinklers, hydrants, smoke and heat detection, and fire alarm systems, except for portions immediately under construction, and temporarily for connections. Provide fire watch for impairments more than 4 hours in a 24-hour period. Request interruptions in accordance with Article, OPERATIONS AND STORAGE AREAS, and coordinate with COR. All existing or temporary fire protection systems (fire alarms, sprinklers) located in construction areas shall be tested as coordinated with the medical center. Parameters for the testing and results of any tests performed shall be recorded by the medical center and copies provided to the Resident Engineer.
- N. Smoke Detectors: Prevent accidental operation. Remove temporary covers at end of work operations each day. Coordinate with COR.
- O. Hot Work: Perform and safeguard hot work operations in accordance with NFPA 241 and NFPA 51B. Coordinate with COR. Obtain permits from facility at least 48 hours in advance.
- P. Fire Hazard Prevention and Safety Inspections: Inspect entire construction areas weekly. Coordinate with, and report findings and corrective actions weekly to COR.

- Q. Smoking: Smoking is prohibited in and adjacent to construction areas inside existing buildings and additions under construction. In separate and detached buildings under construction, smoking is prohibited except in designated smoking rest areas.
- R. Dispose of waste and debris in accordance with NFPA 241. Remove from buildings daily.
- S. Perform other construction, alteration and demolition operations in accordance with 29 CFR 1926.
- T. If required, submit documentation to the Resident Engineer that personnel have been trained in the fire safety aspects of working in areas with impaired structural or compartmentalization features.

1.6 OPERATIONS AND STORAGE AREAS

- A. The Contractor shall confine all operations (including storage of materials) on Government premises to areas authorized or approved by the Contracting Officer. The Contractor shall hold and save the Government, its officers and agents, free and harmless from liability of any nature occasioned by the Contractor's performance.
- B. Temporary buildings (e.g., storage sheds, shops, offices) and utilities may be erected by the Contractor only with the approval of the Contracting Officer and shall be built with labor and materials furnished by the Contractor without expense to the Government. The temporary buildings and utilities shall remain the property of the Contractor and shall be removed by the Contractor at its expense upon completion of the work. With the written consent of the Contracting Officer, the buildings and utilities may be abandoned and need not be removed.
- C. The Contractor shall, under regulations prescribed by the Contracting Officer, use only established roadways, or use temporary roadways constructed by the Contractor when and as authorized by the Contracting Officer. When materials are transported in prosecuting the work, vehicles shall not be loaded beyond the loading capacity recommended by the manufacturer of the vehicle or prescribed by any Federal, State, or local law or regulation. When it is necessary to cross curbs or sidewalks, the Contractor shall protect them from damage. The Contractor

shall repair or pay for the repair of any damaged curbs, sidewalks, or roads.

(FAR 52.236-10)

- D. Working space and space available for storing materials is indicated as lay-down area on the drawings.
- E. Execute work in such a manner as to interfere as little as possible with work being done by others. Keep roads clear of construction materials, debris, standing construction equipment and vehicles at all times.
- F. Execute work so as to interfere as little as possible with normal functioning of Medical Center as a whole, including operations of utility services, fire protection systems and any existing equipment, and with work being done by others.
 - 1. Do not store materials and equipment in other than assigned areas.
 - 2. Schedule delivery of materials and equipment to immediate construction working areas within buildings in use by Department of Veterans Affairs in quantities sufficient for not more than two work days. Provide unobstructed access to Medical Center areas required to remain in operation.
 - 3. Where access by Medical Center personnel to vacated portions of buildings is not required, storage of Contractor's materials and equipment will be permitted subject to fire and safety requirements.
- F. Utilities Services: Where necessary to cut existing pipes, electrical wires, conduits, cables, etc., of utility services, or of fire protection systems or communications systems (except telephone), they shall be cut and capped at suitable places where shown; or, in absence of such indication, where directed by Resident Engineer. All such actions shall be coordinated with the Utility Company involved:

Where necessary to cut existing water, steam, gases, sewer or air pipes, or conduits, wires, cables, etc. of utility services or of fire protection systems and communications systems (including telephone), they shall be cut and capped at suitable places where shown; or, in absence of such indication, where directed by Resident Engineer.

1. No utility service such as water, gas, steam, sewers or electricity, or fire protection systems and communications systems may be interrupted without prior approval of Resident Engineer. Electrical work shall be accomplished with all affected circuits or equipment de-energized. When an electrical outage cannot be accomplished, work on any energized circuits or equipment shall not commence without the Medical Center Director's prior knowledge and written approval. Refer to specification Sections 26 05 11, REQUIREMENTS FOR ELECTRICAL INSTALLATIONS, 27 05 11 REQUIREMENTS FOR COMMUNICATIONS INSTALLATIONS and 28 05 11, REQUIREMENTS FOR ELECTRONIC SAFETY AND SECURITY INSTALLATIONS for additional requirements.
2. Contractor shall submit a request to interrupt any such services to Resident Engineer, in writing, 48 hours in advance of proposed interruption. Request shall state reason, date, exact time of, and approximate duration of such interruption.
3. Contractor will be advised (in writing) of approval of request, or of which other date and/or time such interruption will cause least inconvenience to operations of Medical Center. Interruption time approved by Medical Center may occur at other than Contractor's normal working hours.
4. Major interruptions of any system must be requested, in writing, at least 15 calendar days prior to the desired time and shall be performed as directed by the Resident Engineer.
5. In case of a contract construction emergency, service will be interrupted on approval of Resident Engineer. Such approval will be confirmed in writing as soon as practical.
6. Whenever it is required that a connection fee be paid to a public utility provider for new permanent service to the construction project, for such items as water, sewer, electricity, gas or steam,

payment of such fee shall be the responsibility of the Government and not the Contractor.

- J. Abandoned Lines: All service lines such as wires, cables, conduits, ducts, pipes and the like, and their hangers or supports, which are to be abandoned but are not required to be entirely removed, shall be sealed, capped or plugged. Ensure any vacated wires in conduits are removed. Lines where indicated on plans will require filling with flowable grout. The lines shall not be capped in finished areas, but shall be removed and sealed, capped or plugged in ceilings, within furred spaces, in unfinished areas, or within walls or partitions; so that they are completely behind the finished surfaces.
- K. To minimize interference of construction activities with flow of Medical Center traffic, comply with the following:
1. Keep roads, walks and entrances to grounds, to parking and to occupied areas of buildings clear of construction materials, debris and standing construction equipment and vehicles. Wherever excavation for new utility lines cross existing roads, at least one lane must be open to traffic at all times.
 2. Method and scheduling of required cutting, altering and removal of existing roads, walks and entrances must be approved by the Resident Engineer.
- L. Coordinate the work for this contract with other construction operations as directed by Resident Engineer. This includes the scheduling of traffic and the use of roadways, as specified in Article, USE OF ROADWAYS.

1.8 INFECTION PREVENTION MEASURES

- A. Implement the requirements of VAMC's Infection Control Risk Assessment (ICRA) team. ICRA Group may monitor dust in the vicinity of the construction work and require the Contractor to take corrective action immediately if the safe levels are exceeded.
- B. Establish and maintain a dust control program as part of the contractor's infection preventive measures in accordance with the guidelines provided by ICRA Group. Prior to start of work, prepare a plan detailing project-specific dust protection measures, including

periodic status reports, and submit to COR for review for compliance with contract requirements in accordance with Section 01 33 23, SHOP DRAWINGS, PRODUCT DATA AND SAMPLES.

1. All personnel involved in the construction or renovation activity shall be educated and trained in infection prevention measures established by the medical center.

C. Medical center Infection Control personnel shall monitor for airborne disease (e.g. aspergillosis) as appropriate during construction. A baseline of conditions may be established by the medical center prior to the start of work and periodically during the construction stage to determine impact of construction activities on indoor air quality. In addition:

1. The COR and VAMC Infection Control personnel shall review pressure differential monitoring documentation to verify that pressure differentials in the construction zone and in the patient-care rooms are appropriate for their settings. The requirement for negative air pressure in the construction zone shall depend on the location and type of activity. Upon notification, the contractor shall implement corrective measures to restore proper pressure differentials as needed.
2. In case of any problem, the medical center, along with assistance from the contractor, shall conduct an environmental assessment to find and eliminate the source.

D. In general, following preventive measures shall be adopted during construction to keep down dust and prevent mold.

1. Dampen debris to keep down dust and provide temporary construction partitions in existing structures where directed by Resident Engineer. Blank off ducts and diffusers to prevent circulation of dust into occupied areas during construction.

E. Final Cleanup:

1. Upon completion of project, or as work progresses, remove all construction debris from above ceiling, vertical shafts and utility chases that have been part of the construction.

2. Perform HEPA vacuum cleaning of all surfaces in the construction area. This includes walls, ceilings, cabinets, furniture (built-in or free standing), partitions, flooring, etc.
3. All new air ducts shall be cleaned prior to final inspection.

1.9 DISPOSAL AND RETENTION

A. Materials and equipment accruing from work removed and from demolition of buildings or structures, or parts thereof, shall be disposed of as follows:

1. Reserved items which are to remain property of the Government are noted on drawings or in specifications as items to be stored. Items that remain property of the Government shall be removed or dislodged from present locations in such a manner as to prevent damage which would be detrimental to re-installation and reuse. Store such items where directed by Resident Engineer.
2. Items not reserved shall become property of the Contractor and be removed by Contractor from Medical Center.
3. Items of portable equipment and furnishings located in rooms and spaces in which work is to be done under this contract shall remain the property of the Government. When rooms and spaces are vacated by the Department of Veterans Affairs during the alteration period, such items which are NOT required by drawings and specifications to be either relocated or reused will be removed by the Government in advance of work to avoid interfering with Contractor's operation.
4. PCB Transformers and Capacitors: The Contractor shall be responsible for disposal of the Polychlorinated Biphenyl (PCB) transformers and capacitors. The transformers and capacitors shall be taken out of service and handled in accordance with the procedures of the Environmental Protection Agency (EPA) and the Department of Transportation (DOT) as outlined in Code of Federal Regulation (CFR), Titled 40 and 49 respectively. The EPA's Toxic Substance Control Act (TSCA) Compliance Program Policy Nos. 6-PCB-6 and 6-PCB-7 also apply. Upon removal of PCB transformers and capacitors for disposal, the "originator" copy of the Uniform Hazardous Waste Manifest (EPA Form 8700-22), along with the Uniform Hazardous Waste Manifest Continuation Sheet (EPA Form 8700-22A) shall be returned to the

Contracting Officer who will annotate the contract file and transmit the Manifest to the Medical Center's Chief.

a. Copies of the following listed CFR titles may be obtained from the Government Printing Office:

40 CFR 261.....Identification and Listing of Hazardous Waste

40 CFR 262.....Standards Applicable to Generators of Hazardous Waste

40 CFR 263.....Standards Applicable to Transporters of Hazardous Waste

40 CFR 761.....PCB Manufacturing, Processing, Distribution in Commerce, and use Prohibitions

49 CFR 172.....Hazardous Material tables and Hazardous Material Communications Regulations

49 CFR 173.....Shippers - General Requirements for Shipments and Packaging

49 CFR 173.....Subpart A General

49 CFR 173.....Subpart B Preparation of Hazardous Material for Transportation

49 CFR 173.....Subpart J Other Regulated Material; Definitions and Preparation

TSCA.....Compliance Program Policy Nos. 6-PCB-6 and 6-PCB-7

1.10 PROTECTION OF EXISTING VEGETATION, STRUCTURES, EQUIPMENT, UTILITIES, AND IMPROVEMENTS

A. The Contractor shall preserve and protect all structures, equipment, and vegetation (such as trees, shrubs, and grass) on or adjacent to the work site, which are not to be removed and which do not unreasonably interfere with the work required under this contract. The Contractor shall only remove trees when specifically authorized to do so, and shall avoid damaging vegetation that will remain in place. If any limbs or branches of trees are broken during contract performance, or by the

careless operation of equipment, or by workmen, the Contractor shall trim those limbs or branches with a clean cut and paint the cut with a tree-pruning compound as directed by the Contracting Officer.

- B. The Contractor shall protect from damage all existing improvements and utilities at or near the work site and on adjacent property of a third party, the locations of which are made known to or should be known by the Contractor. The Contractor shall repair any damage to those facilities, including those that are the property of a third party, resulting from failure to comply with the requirements of this contract or failure to exercise reasonable care in performing the work. If the Contractor fails or refuses to repair the damage promptly, the Contracting Officer may have the necessary work performed and charge the cost to the Contractor.

(FAR 52.236-9)

- C. Refer to Section 01 57 19, TEMPORARY ENVIRONMENTAL CONTROLS, for additional requirements on protecting vegetation, soils and the environment. Refer to Articles, "Alterations", "Restoration", and "Operations and Storage Areas" for additional instructions concerning repair of damage to structures and site improvements.
- D. Refer to FAR clause 52.236-7, "Permits and Responsibilities," which is included in General Conditions. A National Pollutant Discharge Elimination System (NPDES) permit is required for this project. The Contractor is considered an "operator" under the permit and has extensive responsibility for compliance with permit requirements. VA will make the permit application available at the (appropriate medical center) office. The apparent low bidder, contractor and affected subcontractors shall furnish all information and certifications that are required to comply with the permit process and permit requirements. Many of the permit requirements will be satisfied by completing construction as shown and specified. Some requirements involve the Contractor's method of operations and operations planning and the Contractor is responsible for employing best management practices. The affected activities often include, but are not limited to the following:
- Designating areas for equipment maintenance and repair;

- Providing waste receptacles at convenient locations and provide regular collection of wastes;
- Locating equipment wash down areas on site, and provide appropriate control of wash-waters;
- Providing protected storage areas for chemicals, paints, solvents, fertilizers, and other potentially toxic materials; and
- Providing adequately maintained sanitary facilities.

1.11 RESTORATION

- A. Remove, cut, alter, replace, patch and repair existing work as necessary to install new work. Except as otherwise shown or specified, do not cut, alter or remove any structural work, and do not disturb any ducts, plumbing, steam, gas, or electric work without approval of the Resident Engineer. Existing work to be altered or extended and that is found to be defective in any way, shall be reported to the Resident Engineer before it is disturbed. Materials and workmanship used in restoring work, shall conform in type and quality to that of original existing construction, except as otherwise shown or specified.
- B. Upon completion of contract, deliver work complete and undamaged. Existing work (walls, ceilings, partitions, floors, mechanical and electrical work, lawns, paving, roads, walks, etc.) disturbed or removed as a result of performing required new work, shall be patched, repaired, reinstalled, or replaced with new work, and refinished and left in as good condition as existed before commencing work.
- C. At Contractor's own expense, Contractor shall immediately restore to service and repair any damage caused by Contractor's workmen to existing piping and conduits, wires, cables, etc., of utility services or of fire protection systems and communications systems (including telephone) which are indicated on drawings and which are not scheduled for discontinuance or abandonment.
- D. Expense of repairs to such utilities and systems not shown on drawings or locations of which are unknown will be covered by adjustment to contract time and price in accordance with clause entitled "CHANGES" (FAR 52.243-4 and VAAR 852.236-88) and "DIFFERING SITE CONDITIONS" (FAR 52.236-2).

1.12 PHYSICAL DATA

A. Data and information furnished or referred to below is for the Contractor's information. The Government shall not be responsible for any interpretation of or conclusion drawn from the data or information by the Contractor.

1. The indications of physical conditions on the drawings and in the specifications are the result of site investigations by Terracon Consultants Inc. Raleigh, North Carolina.

(FAR 52.236-4)

- B. Subsurface conditions have been developed by core borings and test pits. Logs of subsurface exploration are shown diagrammatically on drawings.
- C. A copy of the soil report is included in the specifications and shall be considered part of the contract documents.
- D. Government does not guarantee that other materials will not be encountered nor that proportions, conditions or character of several materials will not vary from those indicated by explorations. Bidders are expected to examine site of work and logs of borings; and, after investigation, decide for themselves character of materials and make their bids accordingly. Upon proper application to Department of Veterans Affairs, bidders will be permitted to make subsurface explorations of their own at site.

1.13 PROFESSIONAL SURVEYING SERVICES

A registered professional land surveyor or registered civil engineer whose services are retained and paid for by the Contractor shall perform services specified herein and in other specification sections. The Contractor shall certify that the land surveyor or civil engineer is not one who is a regular employee of the Contractor, and that the land surveyor or civil engineer has no financial interest in this contract.

1.14 LAYOUT OF WORK

- A. The Contractor shall lay out the work from Government established base lines and bench marks, indicated on the drawings, and shall be responsible for all measurements in connection with the layout. The Contractor shall furnish, at Contractor's own expense, all stakes, templates, platforms, equipment, tools, materials, and labor required to

lay out any part of the work. The Contractor shall be responsible for executing the work to the lines and grades that may be established or indicated by the Contracting Officer. The Contractor shall also be responsible for maintaining and preserving all stakes and other marks established by the Contracting Officer until authorized to remove them. If such marks are destroyed by the Contractor or through Contractor's negligence before their removal is authorized, the Contracting Officer may replace them and deduct the expense of the replacement from any amounts due or to become due to the Contractor.

(FAR 52.236-17)

- B. Establish and plainly mark center lines for each building and/or addition to each existing building, and such other lines and grades that are reasonably necessary to properly assure that location, orientation, and elevations established for each such structure and/or addition, roads, parking lots, are in accordance with lines and elevations shown on contract drawings.
- C. Following completion of general mass excavation and before any other permanent work is performed, establish and plainly mark (through use of appropriate batter boards or other means) sufficient additional survey control points or system of points as may be necessary to assure proper alignment, orientation, and grade of all major features of work. Survey shall include, but not be limited to, location of lines and grades of footings, exterior walls, center lines of columns in both directions, major utilities and elevations of floor slabs:
 - 1. Such additional survey control points or system of points thus established shall be checked and certified by a registered land surveyor or registered civil engineer. Furnish such certification to the Resident Engineer before any work (such as footings, floor slabs, columns, walls, utilities and other major controlling features) is placed.
- D. During progress of work, and particularly as work progresses from floor to floor, Contractor shall have line grades and plumbness of all major form work checked and certified by a registered land surveyor or registered civil engineer as meeting requirements of contract drawings. Furnish such certification to the Resident Engineer before any major items of concrete work are placed. In addition, Contractor shall upon

request furnish to the Resident Engineer certificates from a registered land surveyor or registered civil engineer that the following work is complete in every respect as required by contract drawings.

1. Lines of each building and/or addition.
 2. Elevations of bottoms of footings and tops of floors of each building and/or addition.
 3. Lines and elevations of sewers and of all outside distribution systems.
- E. Whenever changes from contract drawings are made in line or grading requiring certificates, record such changes on a reproducible drawing bearing the registered land surveyor or registered civil engineer seal, and forward these drawings upon completion of work to Resident Engineer.
- F. The Contractor shall perform the surveying and layout work of this and other articles and specifications in accordance with the provisions of Article "Professional Surveying Services".

1.15 AS-BUILT DRAWINGS

- A. The contractor shall maintain two full size sets of as-built drawings which will be kept current during construction of the project, to include all contract changes, modifications and clarifications.
- B. All variations shall be shown in the same general detail as used in the contract drawings. To insure compliance, as-built drawings shall be made available for the Resident Engineer's review, as often as requested.
- C. Contractor shall deliver two approved completed sets of as-built drawings to the Resident Engineer within 15 calendar days after each completed phase and after the acceptance of the project by the Resident Engineer.
- D. Paragraphs A, B, & C shall also apply to all shop drawings.

1.16 USE OF ROADWAYS

- A. For hauling, use only established public roads and roads on Medical Center property and, when authorized by the Resident Engineer, such temporary roads which are necessary in the performance of contract work. Temporary roads shall be constructed by the Contractor at Contractor's

expense. When necessary to cross curbing, sidewalks, or similar construction, they must be protected by well-constructed bridges.

- B. When new permanent roads are to be a part of this contract, Contractor may construct them immediately for use to facilitate building operations. These roads may be used by all who have business thereon within zone of building operations.
- C. When certain buildings (or parts of certain buildings) are required to be completed in advance of general date of completion, all roads leading thereto must be completed and available for use at time set for completion of such buildings or parts thereof.

1.17 TEMPORARY USE OF MECHANICAL AND ELECTRICAL EQUIPMENT

- A. Use of new installed mechanical and electrical equipment to provide heat, ventilation, plumbing, light and power will be permitted subject to compliance with the following provisions:
 - 1. Permission to use each unit or system must be given by Resident Engineer. If the equipment is not installed and maintained in accordance with the following provisions, the Resident Engineer will withdraw permission for use of the equipment.
 - 2. Electrical installations used by the equipment shall be completed in accordance with the drawings and specifications to prevent damage to the equipment and the electrical systems, i.e. transformers, relays, circuit breakers, fuses, conductors, motor controllers and their overload elements shall be properly sized, coordinated and adjusted. Voltage supplied to each item of equipment shall be verified to be correct and it shall be determined that motors are not overloaded. The electrical equipment shall be thoroughly cleaned before using it and again immediately before final inspection including vacuum cleaning and wiping clean interior and exterior surfaces.
 - 3. Units shall be properly lubricated, balanced, and aligned. Vibrations must be eliminated.
 - 4. Automatic temperature control systems for preheat coils shall function properly and all safety controls shall function to prevent coil freeze-up damage.

5. The air filtering system utilized shall be that which is designed for the system when complete, and all filter elements shall be replaced at completion of construction and prior to testing and balancing of system.
6. All components of heat production and distribution system, metering equipment, condensate returns, and other auxiliary facilities used in temporary service shall be cleaned prior to use; maintained to prevent corrosion internally and externally during use; and cleaned, maintained and inspected prior to acceptance by the Government.
- B. Prior to final inspection, the equipment or parts used which show wear and tear beyond normal, shall be replaced with identical replacements, at no additional cost to the Government.
- C. This paragraph shall not reduce the requirements of the mechanical and electrical specifications sections.

1.18 TEMPORARY USE OF NEW ELEVATORS

- A. The Contractor and his personnel shall be permitted use of new elevator(s) subject to the following provisions:
 1. Contractor shall make arrangements with the Resident Engineer for use of elevator(s). Contractor may obtain elevator(s) for exclusive use.
 2. Prior to the use of elevator(s), the Contractor shall have the elevator(s) inspected and accepted by an ASME accredited, certified elevator safety inspector. The acceptance report shall be submitted to the Resident Engineer.
 3. Submit to the Resident Engineer the schedule and procedures for maintaining equipment. Indicate the day or days of the week and total hours required for maintenance. A report shall be submitted to the Resident Engineer monthly indicating the type of maintenance conducted, hours used, and any repairs made to the elevator(s).
 4. The Contractor shall be responsible for enforcing the maintenance procedures.
 5. During temporary use of elevator(s) all repairs, equipment replacement and cost of maintenance shall be the responsibility of the Contractor.

6. Personnel for operating elevator(s) shall not be provided by the Department of Veterans Affairs.
7. Contractor shall cover and provide maximum protection of the entire elevator(s) installation.
8. The Contractor shall arrange for the elevator company to perform operation of the elevator(s) so that an ASME accredited, certified elevator safety inspector can evaluate the equipment. The Contractor shall be responsible for any costs of the elevator company.
9. All elevator(s) parts worn or damaged during temporary use shall be removed and replaced with new parts. This shall be determined by an ASME accredited certified elevator safety inspector after temporary use and before acceptance by the Government. Submit report to the Resident Engineer for approval.
10. Elevator shall be tested as required by the testing section of the elevator(s) specifications before acceptance by the Department of Veterans Affairs.

1.19 TEMPORARY TOILETS

- A. Provide where directed, (for use of all Contractor's workmen) ample temporary sanitary toilet accommodations with suitable sewer and water connections; or, when approved by Resident Engineer, provide suitable dry closets where directed. Keep such places clean and free from flies, and all connections and appliances connected therewith are to be removed prior to completion of contract, and premises left perfectly clean.

1.20 AVAILABILITY AND USE OF UTILITY SERVICES

- A. The Government shall make all reasonably required amounts of utilities available to the Contractor from existing outlets and supplies, as specified in the contract. The amount to be paid by the Contractor for chargeable electrical services shall be the prevailing rates charged to the Government. The Contractor shall carefully conserve any utilities furnished without charge.
- B. The Contractor, at Contractor's expense and in a workmanlike manner satisfactory to the Contracting Officer, shall install and maintain all necessary temporary connections and distribution lines, and all meters required to measure the amount of electricity used for the purpose of

determining charges. Before final acceptance of the work by the Government, the Contractor shall remove all the temporary connections, distribution lines, meters, and associated paraphernalia.

- C. Contractor shall install meters at Contractor's expense and furnish the Medical Center a monthly record of the Contractor's usage of electricity as hereinafter specified.
- D. Heat: Furnish temporary heat necessary to prevent injury to work and materials through dampness and cold. Use of open salamanders or any temporary heating devices which may be fire hazards or may smoke and damage finished work, will not be permitted. Maintain minimum temperatures as specified for various materials as recommended by manufacturer.
- E. Electricity (for Construction and Testing): Furnish all temporary electric services.
- F. Water (for Construction and Testing): Furnish temporary water service.
 - 1. Obtain water by connecting to the Medical Center water distribution system. Provide reduced pressure backflow preventer at each connection. Water is available at no cost to the Contractor.
 - 2. Maintain connections, pipe, fittings and fixtures and conserve water-use so none is wasted. Failure to stop leakage or other wastes will be cause for revocation (at Resident Engineer's discretion) of use of water from Medical Center's system.
- G. Steam: Furnish steam system for testing required in various sections of specifications.
 - 1. Obtain steam for testing by connecting to the Medical Center steam distribution system. Steam is available at no cost to the Contractor.
 - 2. Maintain connections, pipe, fittings and fixtures and conserve steam-use so none is wasted. Failure to stop leakage or other waste will be cause for revocation (at Resident Engineer's discretion), of use of steam from the Medical Center's system.
- H. Fuel: Natural and LP gas and burner fuel oil required for boiler cleaning, normal initial boiler-burner setup and adjusting, and for performing the specified boiler tests will be furnished by the

Government. Fuel required for prolonged boiler-burner setup, adjustments, or modifications due to improper design or operation of boiler, burner, or control devices shall be furnished by the Contractor at Contractor's expense.

1.21 NEW TELEPHONE EQUIPMENT

The contractor shall coordinate with the work of installation of telephone equipment by others. This work shall be completed before the building is turned over to VA.

1.22 TESTS

- A. Pre-test mechanical and electrical equipment and systems and make corrections required for proper operation of such systems before requesting final tests. Final test will not be conducted unless pre-tested.
- B. Conduct final tests required in various sections of specifications in presence of an authorized representative of the Contracting Officer. Contractor shall furnish all labor, materials, equipment, instruments, and forms, to conduct and record such tests.
- C. Mechanical and electrical systems shall be balanced, controlled and coordinated. A system is defined as the entire complex which must be coordinated to work together during normal operation to produce results for which the system is designed. For example, air conditioning supply air is only one part of entire system which provides comfort conditions for a building. Other related components are return air, exhaust air, steam, chilled water, refrigerant, hot water, controls and electricity, etc. Another example of a complex which involves several components of different disciplines is a boiler installation. Efficient and acceptable boiler operation depends upon the coordination and proper operation of fuel, combustion air, controls, steam, feedwater, condensate and other related components.
- D. All related components as defined above shall be functioning when any system component is tested. Tests shall be completed within a reasonably short period of time during which operating and environmental conditions remain reasonably constant.

- E. Individual test result of any component, where required, will only be accepted when submitted with the test results of related components and of the entire system.

1.23 INSTRUCTIONS

- A. Contractor shall furnish Maintenance and Operating manuals (hard copies and electronic) and verbal instructions when required by the various sections of the specifications and as hereinafter specified.
- B. Manuals: Maintenance and operating manuals and one compact disc (four hard copies and one electronic copy each) for each separate piece of equipment shall be delivered to the Resident Engineer coincidental with the delivery of the equipment to the job site. Manuals shall be complete, detailed guides for the maintenance and operation of equipment. They shall include complete information necessary for starting, adjusting, maintaining in continuous operation for long periods of time and dismantling and reassembling of the complete units and sub-assembly components. Manuals shall include an index covering all component parts clearly cross-referenced to diagrams and illustrations. Illustrations shall include "exploded" views showing and identifying each separate item. Emphasis shall be placed on the use of special tools and instruments. The function of each piece of equipment, component, accessory and control shall be clearly and thoroughly explained. All necessary precautions for the operation of the equipment and the reason for each precaution shall be clearly set forth. Manuals must reference the exact model, style and size of the piece of equipment and system being furnished. Manuals referencing equipment similar to but of a different model, style, and size than that furnished will not be accepted.
- C. Instructions: Contractor shall provide qualified, factory-trained manufacturers' representatives to give detailed instructions to assigned Department of Veterans Affairs personnel in the operation and complete maintenance for each piece of equipment. All such training will be at the job site. These requirements are more specifically detailed in the various technical sections. Instructions for different items of equipment that are component parts of a complete system, shall be given in an integrated, progressive manner. All instructors for every piece of component equipment in a system shall be available until instructions for all items included in the system have been completed. This is to

assure proper instruction in the operation of inter-related systems. All instruction periods shall be at such times as scheduled by the Resident Engineer and shall be considered concluded only when the Resident Engineer is satisfied in regard to complete and thorough coverage. The Department of Veterans Affairs reserves the right to request the removal of, and substitution for, any instructor who, in the opinion of the Resident Engineer, does not demonstrate sufficient qualifications in accordance with requirements for instructors above.

1.24 GOVERNMENT-FURNISHED PROPERTY

- A. The Government shall deliver to the Contractor, the Government-furnished property shown and clearly indicated on the drawings.
- B. Equipment furnished by Government to be installed by Contractor will be furnished to Contractor at the Medical Center.
- C. Storage space for equipment will be provided by the Government and the Contractor shall be prepared to unload and store such equipment therein upon its receipt at the Medical Center.
- D. Notify Contracting Officer in writing, 60 days in advance, of date on which Contractor will be prepared to receive equipment furnished by Government. Arrangements will then be made by the Government for delivery of equipment.
 - 1. Immediately upon delivery of equipment, Contractor shall arrange for a joint inspection thereof with a representative of the Government. At such time the Contractor shall acknowledge receipt of equipment described, make notations, and immediately furnish the Government representative with a written statement as to its condition or shortages.
 - 2. Contractor thereafter is responsible for such equipment until such time as acceptance of contract work is made by the Government.
- E. Equipment furnished by the Government will be delivered in a partially assembled (knock down) condition in accordance with existing standard commercial practices, complete with all fittings, fastenings, and appliances necessary for connections to respective services installed under contract. All fittings and appliances (i.e., couplings, ells, tees, nipples, piping, conduits, cables, and the like) necessary to make

the connection between the Government furnished equipment item and the utility stub-up shall be furnished and installed by the contractor at no additional cost to the Government.

- F. Completely assemble and install the Government furnished equipment in place ready for proper operation in accordance with specifications and drawings.
- G. Furnish supervision of installation of equipment at construction site by qualified factory trained technicians regularly employed by the equipment manufacturer.

1.25 RELOCATED ITEMS

- A. Contractor shall disconnect, dismantle as necessary, remove and reinstall in new location, all existing equipment and items indicated or otherwise shown to be relocated by the Contractor.
- B. Perform relocation of such equipment or items at such times and in such a manner as directed by the Resident Engineer.
- C. Suitably cap existing service lines, such as steam, condensate return, water, drain, gas, air, vacuum and/or electrical, whenever such lines are disconnected from equipment to be relocated. Remove abandoned lines in finished areas and cap as specified herein before under paragraph "Abandoned Lines".
- D. Provide all mechanical and electrical service connections, fittings, fastenings and any other materials necessary for assembly and installation of relocated equipment; and leave such equipment in proper operating condition.
- F. All service lines such as noted above for relocated equipment shall be in place at point of relocation ready for use before any existing equipment is disconnected. Make relocated existing equipment ready for operation or use immediately after reinstallation.

1.26 CONSTRUCTION SIGN

- A. Provide a Construction Sign where directed by the Resident Engineer. All wood members shall be of framing lumber. Cover sign frame with 0.7 mm (24 gage) galvanized sheet steel nailed securely around edges and on all bearings. Provide three 100 by 100 mm (4 inch by 4 inch) posts (or

equivalent round posts) set 1200 mm (four feet) into ground. Set bottom of sign level at 900 mm (three feet) above ground and secure to posts with through bolts. Make posts full height of sign. Brace posts with 50 x 100 mm (two by four inch) material as directed.

- B. Paint all surfaces of sign and posts two coats of white gloss paint. Border and letters shall be of black gloss paint, except project title which shall be blue gloss paint.
- C. Maintain sign and remove it when directed by the Resident Engineer.
- D. Detail Drawing of construction sign showing required legend and other characteristics of sign is shown on the drawings.

1.27 SAFETY SIGN

- A. Provide a Safety Sign where directed by Resident Engineer. Face of sign shall be 19 mm (3/4 inch) thick exterior grade plywood. Provide two 100 mm by 100 mm (four by four inch) posts extending full height of sign and 900 mm (three feet) into ground. Set bottom of sign level at 1200 mm (four feet) above ground.
- B. Paint all surfaces of Safety Sign and posts with one prime coat and two coats of white gloss paint. Letters and design shall be painted with gloss paint of colors noted.
- C. Maintain sign and remove it when directed by Resident Engineer.
- D. Standard Detail Drawing Number SD10000-02(Found on VA TIL) of safety sign showing required legend and other characteristics of sign is shown on the drawings.
- E. Post the number of accident free days on a daily basis.

- - - E N D - - -

SECTION 01 33 23
SHOP DRAWINGS, PRODUCT DATA, AND SAMPLES

- 1.1 Refer to Articles titled SPECIFICATIONS AND DRAWINGS FOR CONTRACTOR (FAR 52.236-21) and, SPECIAL NOTES (VAAR 852.236-91), in GENERAL CONDITIONS.
- 1.2 For the purposes of this contract, samples (including laboratory samples to be tested), test reports, certificates, and manufacturers' literature and data shall also be subject to the previously referenced requirements. The following text refers to all items collectively as SUBMITTALS.
- 1.3 Submit for approval, all of the items specifically mentioned under the separate sections of the specification, with information sufficient to evidence full compliance with contract requirements. Materials, fabricated articles and the like to be installed in permanent work shall equal those of approved submittals. After an item has been approved, no change in brand or make will be permitted unless:
 - A. Satisfactory written evidence is presented to, and approved by Contracting Officer, that manufacturer cannot make scheduled delivery of approved item or;
 - B. Item delivered has been rejected and substitution of a suitable item is an urgent necessity or;
 - C. Other conditions become apparent which indicates approval of such substitute item to be in best interest of the Government.
- 1.4 Forward submittals in sufficient time to permit proper consideration and approval action by Government. Time submission to assure adequate lead time for procurement of contract - required items. Delays attributable to untimely and rejected submittals (including any laboratory samples to be tested) will not serve as a basis for extending contract time for completion.
- 1.5 Submittals will be reviewed for compliance with contract requirements by Architect-Engineer, and action thereon will be taken by Contracting Officer Representative on behalf of the Contracting Officer.
- 1.6 Upon receipt of submittals, Architect-Engineer will assign a file number thereto. Contractor, in any subsequent correspondence, shall refer to this file and identification number to expedite replies relative to previously approved or disapproved submittals.

- 1.7 The Government reserves the right to require additional submittals, whether or not particularly mentioned in this contract. If additional submittals beyond those required by the contract are furnished pursuant to request therefor by Contracting Officer, adjustment in contract price and time will be made in accordance with Articles titled CHANGES (FAR 52.243-4) and CHANGES - SUPPLEMENT (VAAR 852.236-88) of the GENERAL CONDITIONS.
- 1.8 Schedules called for in specifications and shown on shop drawings shall be submitted for use and information of Department of Veterans Affairs and Architect-Engineer. However, the Contractor shall assume responsibility for coordinating and verifying schedules. The Contracting Officer and Architect- Engineer assumes no responsibility for checking schedules or layout drawings for exact sizes, exact numbers and detailed positioning of items.
- 1.9 Submittals must be submitted by Contractor only and shipped prepaid. Contracting Officer assumes no responsibility for checking quantities or exact numbers included in such submittals.
- A. Submit samples required by Section 09 06 00, SCHEDULE FOR FINISHES, in quadruplicate. Submit other samples in single units unless otherwise specified. Submit shop drawings, schedules, manufacturers' literature and data, and certificates in quadruplicate, except where a greater number is specified.
- B. Submittals will receive consideration only when covered by a transmittal letter signed by Contractor. Letter shall be sent via first class mail, email and shall contain the list of items, name of Medical Center , name of Contractor, contract number, applicable specification paragraph numbers, applicable drawing numbers (and other information required for exact identification of location for each item), manufacturer and brand, ASTM or Federal Specification Number (if any) and such additional information as may be required by specifications for particular item being furnished. In addition, catalogs shall be marked to indicate specific items submitted for approval.
1. A copy of letter must be enclosed with items, and any items received without identification letter will be considered "unclaimed goods" and held for a limited time only.
2. Each sample, certificate, manufacturers' literature and data shall be labeled to indicate the name and location of the Medical Center, name of Contractor, manufacturer, brand, contract number and ASTM or

- Federal Specification Number as applicable and location(s) on project.
3. Required certificates shall be signed by an authorized representative of manufacturer or supplier of material, and by Contractor.
- C. In addition to complying with the applicable requirements specified in preceding Article 1.9, samples which are required to have Laboratory Tests (those preceded by symbol "LT" under the separate sections of the specification shall be tested, at the expense of Contractor, in a commercial laboratory approved by Contracting Officer.
1. Laboratory shall furnish Contracting Officer with a certificate stating that it is fully equipped and qualified to perform intended work, is fully acquainted with specification requirements and intended use of materials and is an independent establishment in no way connected with organization of Contractor or with manufacturer or supplier of materials to be tested.
 2. Certificates shall also set forth a list of comparable projects upon which laboratory has performed similar functions during past five years.
 3. Samples and laboratory tests shall be sent directly to approved commercial testing laboratory.
 4. Contractor shall send a copy of transmittal letter to both Contracting Officer Representative and to Architect-Engineer simultaneously with submission of material to a commercial testing laboratory.
 4. Contractor shall forward a copy of transmittal letter to Contracting Officer Representative simultaneously with submission to a commercial testing laboratory.
 5. A Copy of Laboratory test reports shall be sent directly to Contracting Officer Representative for appropriate action.
 6. Laboratory reports shall list contract specification test requirements and a comparative list of the laboratory test results. When tests show that the material meets specification requirements, the laboratory shall so certify on test report.
 7. Laboratory test reports shall also include a recommendation for approval or disapproval of tested item.
- D. If submittal samples have been disapproved, resubmit new samples as soon as possible after notification of disapproval. Such new samples shall be

marked "Resubmitted Sample" in addition to containing other previously specified information required on label and in transmittal letter.

E. Approved samples will be kept on file by the Contracting Officer Representative at the site until completion of contract, at which time such samples will be delivered to Contractor as Contractor's property. Where noted in technical sections of specifications, approved samples in good condition may be used in their proper locations in contract work. At completion of contract, samples that are not approved will be returned to Contractor only upon request and at Contractor's expense. Such request should be made prior to completion of the contract. Disapproved samples that are not requested for return by Contractor will be discarded after completion of contract.

F. Submittal drawings (shop, erection or setting drawings) and schedules, required for work of various trades, shall be checked before submission by technically qualified employees of Contractor for accuracy, completeness and compliance with contract requirements. These drawings and schedules shall be stamped and signed by Contractor certifying to such check.

1. For each drawing required, submit one legible photographic paper or vellum reproducible.
2. Reproducible shall be full size.
3. Each drawing shall have marked thereon, proper descriptive title, including Medical Center location, project number, manufacturer's number, reference to contract drawing number, detail Section Number, and Specification Section Number.
4. A space 120 mm by 125 mm (4-3/4 by 5 inches) shall be reserved on each drawing to accommodate approval or disapproval stamp.
5. Submit drawings, ROLLED WITHIN A MAILING TUBE, fully protected for shipment.
6. One reproducible print of approved or disapproved shop drawings will be forwarded to Contractor.
7. When work is directly related and involves more than one trade, shop drawings shall be submitted to Architect-Engineer under one cover.

1.10 Samples (except laboratory samples), shop drawings, test reports, certificates and manufacturers' literature and data, shall be submitted for approval to the COR and Contracting Officer

- 1.11 At the time of transmittal to the Architect-Engineer, the Contractor shall also send a copy of the complete submittal directly to the Contracting Officer Representative.
- 1.12 Samples (except laboratory samples) for approval shall be sent to Architect-Engineer, in care of Contracting Officer Representative

- - - E N D - - -

SECTION 01 35 26
SAFETY REQUIREMENTS

TABLE OF CONTENTS

1.1	APPLICABLE PUBLICATIONS	3
1.2	DEFINITIONS	4
1.3	REGULATORY REQUIREMENTS	5
1.4	ACCIDENT PREVENTION PLAN (APP)	6
1.5	ACTIVITY HAZARD ANALYSES (AHAs)	11
1.6	PRECONSTRUCTION CONFERENCE	13
1.7	"SITE SAFETY AND HEALTH OFFICER" (SSHO) and "COMPETENT PERSON" (CP)	14
1.8	TRAINING	14
1.9	INSPECTIONS	16
1.10	ACCIDENTS, OSHA 300 LOGS, AND MAN-HOURS	17
1.11	PERSONAL PROTECTIVE EQUIPMENT (PPE)	18
1.12	INFECTION CONTROL	18
1.13	TUBERCULOSIS SCREENING	22
1.14	FIRE SAFETY	23
1.15	ELECTRICAL	24
1.16	FALL PROTECTION	25
1.17	SCAFFOLDS AND OTHER WORK PLATFORMS	26
1.18	EXCAVATION AND TRENCHES	26
1.19	CRANES	28
1.20	CONTROL OF HAZARDOUS ENERGY (LOCKOUT/TAGOUT)	28
1.21	CONFINED SPACE ENTRY	28

Salisbury VAMC
Parking Safety
Salisbury, NC 28144

1/31/2018
Bid Set
Project No. 659-18-206

1.22	WELDING AND CUTTING.....	28
1.23	LADDERS.....	29
1.24	FLOOR & WALL OPENINGS.....	29

SECTION 01 35 26
SAFETY REQUIREMENTS

1.1 APPLICABLE PUBLICATIONS:

A. Latest publications listed below form part of this Article to extent referenced. Publications are referenced in text by basic designations only.

B. American Society of Safety Engineers (ASSE):

A10.1-2011.....Pre-Project & Pre-Task Safety and Health
Planning

A10.34-2012.....Protection of the Public on or Adjacent to
Construction Sites

A10.38-2013.....Basic Elements of an Employer's Program to
Provide a Safe and Healthful Work Environment
American National Standard Construction and
Demolition Operations

C. American Society for Testing and Materials (ASTM):

E84-2013.....Surface Burning Characteristics of Building
Materials

D. The Facilities Guidelines Institute (FGI):

FGI Guidelines-2010Guidelines for Design and Construction of
Healthcare Facilities

E. National Fire Protection Association (NFPA):

10-2013.....Standard for Portable Fire Extinguishers

30-2012.....Flammable and Combustible Liquids Code

51B-2014.....Standard for Fire Prevention During Welding,
Cutting and Other Hot Work

70-2014.....National Electrical Code

70B-2013.....Recommended Practice for Electrical Equipment
Maintenance

70E-2012Standard for Electrical Safety in the Workplace

99-2012.....Health Care Facilities Code

241-2013.....Standard for Safeguarding Construction,
Alteration, and Demolition Operations

F. The Joint Commission (TJC)

TJC ManualComprehensive Accreditation and Certification
Manual

G. U.S. Nuclear Regulatory Commission

10 CFR 20Standards for Protection Against Radiation

H. U.S. Occupational Safety and Health Administration (OSHA):

29 CFR 1904Reporting and Recording Injuries & Illnesses

29 CFR 1910Safety and Health Regulations for General
Industry

29 CFR 1926Safety and Health Regulations for Construction
Industry

CPL 2-0.124.....Multi-Employer Citation Policy

I. VHA Directive 2005-007

1.2 DEFINITIONS:

A. OSHA "Competent Person" (CP). One who is capable of identifying existing and predictable hazards in the surroundings and working conditions which are unsanitary, hazardous or dangerous to employees, and who has the authorization to take prompt corrective measures to eliminate them (see 29 CFR 1926.32(f)).

B. "Qualified Person" means one who, by possession of a recognized degree, certificate, or professional standing, or who by extensive knowledge,

training and experience, has successfully demonstrated his ability to solve or resolve problems relating to the subject matter, the work, or the project.

- C. High Visibility Accident. Any mishap which may generate publicity or high visibility.
- D. Medical Treatment. Treatment administered by a physician or by registered professional personnel under the standing orders of a physician. Medical treatment does not include first aid treatment even though provided by a physician or registered personnel.
- E. Recordable Injuries or Illnesses. Any work-related injury or illness that results in:
 - 1. Death, regardless of the time between the injury and death, or the length of the illness;
 - 2. Days away from work (any time lost after day of injury/illness onset);
 - 3. Restricted work;
 - 4. Transfer to another job;
 - 5. Medical treatment beyond first aid;
 - 6. Loss of consciousness; or
 - 7. A significant injury or illness diagnosed by a physician or other licensed health care professional, even if it did not result in (1) through (6) above.

1.3 REGULATORY REQUIREMENTS:

- A. In addition to the detailed requirements included in the provisions of this contract, comply with 29 CFR 1926, comply with 29 CFR 1910 as incorporated by reference within 29 CFR 1926, comply with ASSE A10.34, and all applicable [federal, state, and local] laws, ordinances, criteria, rules and regulations. Submit matters of interpretation of standards for resolution before starting work. Where the requirements

of this specification, applicable laws, criteria, ordinances, regulations, and referenced documents vary, the most stringent requirements govern except with specific approval and acceptance by the Contracting Officer Representative.

1.4 ACCIDENT PREVENTION PLAN (APP):

A. The APP (aka Construction Safety & Health Plan) shall interface with the Contractor's overall safety and health program. Include any portions of the Contractor's overall safety and health program referenced in the APP in the applicable APP element and ensure it is site-specific. The Government considers the Prime Contractor to be the "controlling authority" for all worksite safety and health of each subcontractor(s). Contractors are responsible for informing their subcontractors of the safety provisions under the terms of the contract and the penalties for noncompliance, coordinating the work to prevent one craft from interfering with or creating hazardous working conditions for other crafts, and inspecting subcontractor operations to ensure that accident prevention responsibilities are being carried out.

B. The APP shall be prepared as follows:

1. Written in English by a qualified person who is employed by the Prime Contractor articulating the specific work and hazards pertaining to the contract (model language can be found in ASSE A10.33). Specifically articulating the safety requirements found within these VA contract safety specifications.
2. Address both the Prime Contractors and the subcontractors work operations.
3. State measures to be taken to control hazards associated with materials, services, or equipment provided by suppliers.
4. Address all the elements/sub-elements and in order as follows:
 - a. **SIGNATURE SHEET.** Title, signature, and phone number of the following:

- 1) Plan preparer (Qualified Person such as corporate safety staff person or contracted Certified Safety Professional with construction safety experience);
- 2) Plan approver (company/corporate officers authorized to obligate the company);
- 3) Plan concurrence (e.g., Chief of Operations, Corporate Chief of Safety, Corporate Industrial Hygienist, project manager or superintendent, project safety professional). Provide concurrence of other applicable corporate and project personnel (Contractor).

b. **BACKGROUND INFORMATION.** List the following:

- 1) Contractor;
- 2) Contract number;
- 3) Project name;
- 4) Brief project description, description of work to be performed, and location; phases of work anticipated (these will require an AHA).

c. **STATEMENT OF SAFETY AND HEALTH POLICY.** Provide a copy of current corporate/company Safety and Health Policy Statement, detailing commitment to providing a safe and healthful workplace for all employees. The Contractor's written safety program goals, objectives, and accident experience goals for this contract should be provided.

d. **RESPONSIBILITIES AND LINES OF AUTHORITIES.** Provide the following:

- 1) A statement of the employer's ultimate responsibility for the implementation of his SOH program;
- 2) Identification and accountability of personnel responsible for safety at both corporate and project level. Contracts

specifically requiring safety or industrial hygiene personnel shall include a copy of their resumes.

- 3) The names of Competent and/or Qualified Person(s) and proof of competency/qualification to meet specific OSHA Competent/Qualified Person(s) requirements must be attached.;
 - 4) Requirements that no work shall be performed unless a designated competent person is present on the job site;
 - 5) Requirements for pre-task Activity Hazard Analysis (AHAs);
 - 6) Lines of authority;
 - 7) Policies and procedures regarding noncompliance with safety requirements (to include disciplinary actions for violation of safety requirements) should be identified;
- e. SUBCONTRACTORS AND SUPPLIERS.** If applicable, provide procedures for coordinating SOH activities with other employers on the job site:
- 1) Identification of subcontractors and suppliers (if known);
 - 2) Safety responsibilities of subcontractors and suppliers.
- f. TRAINING.**
- 1) Site-specific SOH orientation training at the time of initial hire or assignment to the project for every employee before working on the project site is required.
 - 2) Mandatory training and certifications that are applicable to this project (e.g., explosive actuated tools, crane operator, rigger, crane signal person, fall protection, electrical lockout/NFPA 70E, machine/equipment lockout, confined space, etc...) and any requirements for periodic retraining/recertification are required.

- 3) Procedures for ongoing safety and health training for supervisors and employees shall be established to address changes in site hazards/conditions.
- 4) OSHA 10-hour training is required for all workers on site and the OSHA 30-hour training is required for Trade Competent Persons (CPs)

g. SAFETY AND HEALTH INSPECTIONS.

- 1) Specific assignment of responsibilities for a minimum daily job site safety and health inspection during periods of work activity: Who will conduct (e.g., "Site Safety and Health CP"), proof of inspector's training/qualifications, when inspections will be conducted, procedures for documentation, deficiency tracking system, and follow-up procedures.
- 2) Any external inspections/certifications that may be required (e.g., contracted CSP or CSHT)

h. ACCIDENT INVESTIGATION & REPORTING. The Contractor shall conduct mishap investigations of all OSHA Recordable Incidents. The APP shall include accident/incident investigation procedure & identify person(s) responsible to provide the following to the Contracting Officer Representative:

- 1) Exposure data (man-hours worked);
- 2) Accident investigations, reports, and logs.

i. PLANS (PROGRAMS, PROCEDURES) REQUIRED. Based on a risk assessment of contracted activities and on mandatory OSHA compliance programs, the Contractor shall address all applicable occupational risks in site-specific compliance and accident prevention plans. These Plans shall include but are not be limited to procedures for addressing the risks associates with the following:

- 1) Emergency response ;

- 2) Contingency for severe weather;
- 3) Fire Prevention ;
- 4) Medical Support;
- 5) Posting of emergency telephone numbers;
- 6) Prevention of alcohol and drug abuse;
- 7) Site sanitation (housekeeping, drinking water, toilets);
- 8) Night operations and lighting ;
- 9) Hazard communication program;
- 10) Welding/Cutting "Hot" work ;
- 11) Electrical Safe Work Practices (Electrical LOTO/NFPA 70E);
- 12) General Electrical Safety
- 13) Hazardous energy control (Machine LOTO);
- 14) Site-Specific Fall Protection & Prevention;
- 15) Excavation/trenching;
- 16) Asbestos abatement;
- 17) Lead abatement;
- 18) Crane Critical lift;
- 19) Respiratory protection;
- 20) Health hazard control program;
- 21) Radiation Safety Program;
- 22) Abrasive blasting;
- 23) Heat/Cold Stress Monitoring;
- 24) Crystalline Silica Monitoring (Assessment);

25) Demolition plan (to include engineering survey);

26) Formwork and shoring erection and removal;

27) PreCast Concrete.

- C. Submit the APP to the Contracting Officer Representative for review for compliance with contract requirements in accordance with Section 01 33 23, SHOP DRAWINGS, PRODUCT DATA AND SAMPLES 15 calendar days prior to the date of the preconstruction conference for acceptance. Work cannot proceed without an accepted APP.
- D. Once accepted by the Contracting Officer Representative, the APP and attachments will be enforced as part of the contract. Disregarding the provisions of this contract or the accepted APP will be cause for stopping of work, at the discretion of the Contracting Officer, until the matter has been rectified.
- E. Once work begins, changes to the accepted APP shall be made with the knowledge and concurrence of the Contracting Officer. Should any severe hazard exposure, i.e. imminent danger, become evident, stop work in the area, secure the area, and develop a plan to remove the exposure and control the hazard. Notify the Contracting Officer within 24 hours of discovery. Eliminate/remove the hazard. In the interim, take all necessary action to restore and maintain safe working conditions in order to safeguard onsite personnel, visitors, the public (as defined by ASSE/SAFE A10.34) and the environment.

1.5 ACTIVITY HAZARD ANALYSES (AHAS):

- A. AHAs are also known as Job Hazard Analyses, Job Safety Analyses, and Activity Safety Analyses. Before beginning each work activity involving a type of work presenting hazards not experienced in previous project operations or where a new work crew or sub-contractor is to perform the work, the Contractor(s) performing that work activity shall prepare an AHA (Example electronic AHA forms can be found on the US Army Corps of Engineers web site)
- B. AHAs shall define the activities being performed and identify the work sequences, the specific anticipated hazards, site conditions,

equipment, materials, and the control measures to be implemented to eliminate or reduce each hazard to an acceptable level of risk.

- C. Work shall not begin until the AHA for the work activity has been accepted by the Contracting Officer and discussed with all engaged in the activity, including the Contractor, subcontractor(s), and Government on-site representatives at preparatory and initial control phase meetings.
1. The names of the Competent/Qualified Person(s) required for a particular activity (for example, excavations, scaffolding, fall protection, other activities as specified by OSHA and/or other State and Local agencies) shall be identified and included in the AHA. Certification of their competency/qualification shall be submitted to the Government Designated Authority (GDA) for acceptance prior to the start of that work activity.
 2. The AHA shall be reviewed and modified as necessary to address changing site conditions, operations, or change of competent/qualified person(s).
 - a. If more than one Competent/Qualified Person is used on the AHA activity, a list of names shall be submitted as an attachment to the AHA. Those listed must be Competent/Qualified for the type of work involved in the AHA and familiar with current site safety issues.
 - b. If a new Competent/Qualified Person (not on the original list) is added, the list shall be updated (an administrative action not requiring an updated AHA). The new person shall acknowledge in writing that he or she has reviewed the AHA and is familiar with current site safety issues.
 3. Submit AHAs to the Contracting Officer for review for compliance with contract requirements in accordance with Section 01 33 23, SHOP DRAWINGS, PRODUCT DATA AND SAMPLES for review at least 15 calendar days prior to the start of each phase. Subsequent AHAs as shall be formatted as amendments to the APP. The analysis should be used

during daily inspections to ensure the implementation and effectiveness of the activity's safety and health controls.

4. The AHA list will be reviewed periodically (at least monthly) at the Contractor supervisory safety meeting and updated as necessary when procedures, scheduling, or hazards change.
5. Develop the activity hazard analyses using the project schedule as the basis for the activities performed. All activities listed on the project schedule will require an AHA. The AHAs will be developed by the contractor, supplier, or subcontractor and provided to the prime contractor for review and approval and then submitted to the Contracting Officer Representative.

1.6 PRECONSTRUCTION CONFERENCE:

- A. Contractor representatives who have a responsibility or significant role in implementation of the accident prevention program, as required by 29 CFR 1926.20(b)(1), on the project shall attend the preconstruction conference to gain a mutual understanding of its implementation. This includes the project superintendent, subcontractor superintendents, and any other assigned safety and health professionals.
- B. Discuss the details of the submitted APP to include incorporated plans, programs, procedures and a listing of anticipated AHAs that will be developed and implemented during the performance of the contract. This list of proposed AHAs will be reviewed at the conference and an agreement will be reached between the Contractor and the Contracting Officer's representative as to which phases will require an analysis. In addition, establish a schedule for the preparation, submittal, review, and acceptance of AHAs to preclude project delays.
- C. Deficiencies in the submitted APP will be brought to the attention of the Contractor within 14 days of submittal, and the Contractor shall revise the plan to correct deficiencies and re-submit it for acceptance. Do not begin work until there is an accepted APP.

1.7 "SITE SAFETY AND HEALTH OFFICER" (SSHO) AND "COMPETENT PERSON" (CP):

- A. The Prime Contractor shall designate a minimum of one SSHO at each project site that will be identified as the SSHO to administer the Contractor's safety program and government-accepted Accident Prevention Plan. Each subcontractor shall designate a minimum of one CP in compliance with 29 CFR 1926.20 (b)(2) that will be identified as a CP to administer their individual safety programs.
- B. Further, all specialized Competent Persons for the work crews will be supplied by the respective contractor as required by 29 CFR 1926 (i.e. Asbestos, Electrical, Cranes, & Derricks, Demolition, Fall Protection, Fire Safety/Life Safety, Ladder, Rigging, Scaffolds, and Trenches/Excavations).
- C. These Competent Persons can have collateral duties as the subcontractor's superintendent and/or work crew lead persons as well as fill more than one specialized CP role (i.e. Asbestos, Electrical, Cranes, & Derricks, Demolition, Fall Protection, Fire Safety/Life Safety, Ladder, Rigging, Scaffolds, and Trenches/Excavations).
- D. The SSHO or an equally-qualified Designated Representative/alternate will maintain a presence on the site during construction operations in accordance with FAR Clause 52.236-6: *Superintendence by the Contractor*. CPs will maintain presence during their construction activities in accordance with above mentioned clause. A listing of the designated SSHO and all known CPs shall be submitted prior to the start of work as part of the APP with the training documentation and/or AHA as listed in Section 1.8 below.
- E. The repeated presence of uncontrolled hazards during a contractor's work operations will result in the designated CP as being deemed incompetent and result in the required removal of the employee in accordance with FAR Clause 52.236-5: Material and Workmanship, Paragraph (c).

1.8 TRAINING:

- A. The designated Prime Contractor SSHO must meet the requirements of all applicable OSHA standards and be capable (through training, experience,

and qualifications) of ensuring that the requirements of 29 CFR 1926.16 and other appropriate Federal, State and local requirements are met for the project. As a minimum the SSHO must have completed the OSHA 30-hour Construction Safety class and have five (5) years of construction industry safety experience or three (3) years if he/she possesses a Certified Safety Professional (CSP) or certified Construction Safety and Health Technician (CSHT) certification or have a safety and health degree from an accredited university or college.

- B. All designated CPs shall have completed the OSHA 30-hour Construction Safety course within the past 3 years.
- C. In addition to the OSHA 30 Hour Construction Safety Course, all CPs with high hazard work operations such as operations involving asbestos, electrical, cranes, demolition, work at heights/fall protection, fire safety/life safety, ladder, rigging, scaffolds, and trenches/excavations shall have a specialized formal course in the hazard recognition & control associated with those high hazard work operations. Documented "repeat" deficiencies in the execution of safety requirements will require retaking the requisite formal course.
- D. All other construction workers shall have the OSHA 10-hour Construction Safety Outreach course and any necessary safety training to be able to identify hazards within their work environment.
- E. Submit training records associated with the above training requirements to the Contracting Officer Representative for review for compliance with contract requirements in accordance with Section 01 33 23, SHOP DRAWINGS, PRODUCT DATA AND SAMPLES 15 calendar days prior to the date of the preconstruction conference for acceptance.
- F. Prior to any worker for the contractor or subcontractors beginning work, they shall undergo a safety briefing provided by the SSHO or his/her designated representative. As a minimum, this briefing shall include information on the site-specific hazards, construction limits, VAMC safety guidelines, means of egress, break areas, work hours, locations of restrooms, use of VAMC equipment, emergency procedures, accident reporting etc... Documentation shall be provided to the

Resident Engineer that individuals have undergone contractor's safety briefing.

- G. Ongoing safety training will be accomplished in the form of weekly documented safety meeting.

1.9 INSPECTIONS:

- A. The SSHO shall conduct frequent and regular safety inspections (daily) of the site and each of the subcontractors CPs shall conduct frequent and regular safety inspections (daily) of the their work operations as required by 29 CFR 1926.20(b)(2). Each week, the SSHO shall conduct a formal documented inspection of the entire construction areas with the subcontractors' "Trade Safety and Health CPs" present in their work areas. Coordinate with, and report findings and corrective actions weekly to Contracting Officer Representative.
- B. A Certified Safety Professional (CSP) with specialized knowledge in construction safety or a certified Construction Safety and Health Technician (CSHT) shall randomly conduct a monthly site safety inspection. The CSP or CSHT can be a corporate safety professional or independently contracted. The CSP or CSHT will provide their certificate number on the required report for verification as necessary.
1. Results of the inspection will be documented with tracking of the identified hazards to abatement.
 2. The Contracting Officer Representative will be notified immediately prior to start of the inspection and invited to accompany the inspection.
 3. Identified hazard and controls will be discussed to come to a mutual understanding to ensure abatement and prevent future reoccurrence.

4. A report of the inspection findings with status of abatement will be provided to the Contracting Officer Representative within one week of the onsite inspection.

1.10 ACCIDENTS, OSHA 300 LOGS, AND MAN-HOURS:

- A. Notify the Contracting Officer Representative as soon as practical, but no more than four hours after any accident meeting the definition of OSHA Recordable Injuries or Illnesses or High Visibility Accidents, property damage equal to or greater than \$5,000, or any weight handling equipment accident. Within notification include contractor name; contract title; type of contract; name of activity, installation or location where accident occurred; date and time of accident; names of personnel injured; extent of property damage, if any; extent of injury, if known, and brief description of accident (to include type of construction equipment used, PPE used, etc.). Preserve the conditions and evidence on the accident site until the Contracting Officer Representative determine whether a government investigation will be conducted.
- B. Conduct an accident investigation for recordable injuries and illnesses, for Medical Treatment defined in paragraph DEFINITIONS, and property damage accidents resulting in at least \$20,000 in damages, to establish the root cause(s) of the accident. Complete the VA Form 2162, and provide the report to the Contracting Officer Representative within 5 calendar days of the accident. The Contracting Officer Representative will provide copies of any required or special forms.
- C. A summation of all man-hours worked by the contractor and associated sub-contractors for each month will be reported to the Contracting Officer Representative monthly.
- D. A summation of all OSHA recordable accidents experienced on site by the contractor and associated sub-contractors for each month will be provided to the Contracting Officer Representative monthly. The contractor and associated sub-contractors' OSHA 300 logs will be made available to the Contracting Officer Representative as requested.

1.11 PERSONAL PROTECTIVE EQUIPMENT (PPE):

A. PPE is governed in all areas by the nature of the work the employee is performing. For example, specific PPE required for performing work on electrical equipment is identified in NFPA 70E, Standard for Electrical Safety in the Workplace.

B. Mandatory PPE includes:

1. Hard Hats - unless written authorization is given by the Contracting Officer Representative in circumstances of work operations that have limited potential for falling object hazards such as during finishing work or minor remodeling. With authorization to relax the requirement of hard hats, if a worker becomes exposed to an overhead falling object hazard, then hard hats would be required in accordance with the OSHA regulations.
2. Safety glasses - unless written authorization is given by the Contracting Officer Representative appropriate safety glasses meeting the ANSI Z.87.1 standard must be worn by each person on site.
3. Appropriate Safety Shoes - based on the hazards present, safety shoes meeting the requirements of ASTM F2413-11 shall be worn by each person on site unless written authorization is given by the Contracting Officer Representative.
4. Hearing protection - Use personal hearing protection at all times in designated noise hazardous areas or when performing noise hazardous tasks.

1.12 INFECTION CONTROL

A. Infection Control is critical in all medical center facilities. Interior construction activities causing disturbance of existing dust, or creating new dust, must be conducted within ventilation-controlled areas that minimize the flow of airborne particles into patient areas. Exterior construction activities causing disturbance of soil or creates dust in some other manner must be controlled.

B. An AHA associated with infection control will be performed by VA personnel in accordance with FGI Guidelines (i.e. Infection Control Risk Assessment (ICRA)). The ICRA procedure found on the American Society for Healthcare Engineering (ASHE) website will be utilized. Risk classifications of Class II or lower will require approval by the Contracting Officer Representative before beginning any construction work. Risk classifications of Class III or higher will require a permit before beginning any construction work. Infection Control permits will be issued by the Contracting Officer Representative. The Infection Control Permits will be posted outside the appropriate construction area. More than one permit may be issued for a construction project if the work is located in separate areas requiring separate classes. The primary project scope area for this project is: **Class 1**, however, work outside the primary project scope area may vary. The required infection control precautions with each class are as follows:

1. Class I requirements:

a. During Construction Work:

- 1) Execute work by methods to minimize raising dust from construction operations.

b. Upon Completion:

- 1) Clean work area upon completion

C. Products and Materials:

1. Sheet Plastic: Fire retardant polystyrene, 6-mil thickness meeting local fire codes
2. Exhaust Hoses: Heavy duty, flexible steel reinforced; Ventilation Blower Hose
3. Disinfectant: Hospital-approved disinfectant or equivalent product

D. Before any construction on site begins, all contractor personnel involved in the construction or renovation activity shall be educated

and trained in infection prevention measures established by the medical center.

- E. A dust control program will be establish and maintained as part of the contractor's infection preventive measures in accordance with the FGI Guidelines for Design and Construction of Healthcare Facilities. Prior to start of work, prepare a plan detailing project-specific dust protection measures with associated product data, including periodic status reports, and submit to Contracting Officer Representative for review for compliance with contract requirements in accordance with Section 01 33 23, SHOP DRAWINGS, PRODUCT DATA AND SAMPLES.
- F. Medical center Infection Control personnel will monitor for airborne disease (e.g. aspergillosis) during construction. A baseline of conditions will be established by the medical center prior to the start of work and periodically during the construction stage to determine impact of construction activities on indoor air quality with safe thresholds established.
- H. In general, the following preventive measures shall be adopted during construction to keep down dust and prevent mold.
 - 1. Contractor shall verify that construction exhaust to exterior is not reintroduced to the medical center through intake vents, or building openings. HEPA filtration is required where the exhaust dust may reenter the medical center.
 - 2. Exhaust hoses shall be exhausted so that dust is not reintroduced to the medical center.
 - 3. Adhesive Walk-off/Carpet Walk-off Mats shall be used at all interior transitions from the construction area to occupied medical center area. These mats shall be changed as often as required to maintain clean work areas directly outside construction area at all times.
 - 4. Vacuum and wet mop all transition areas from construction to the occupied medical center at the end of each workday. Vacuum shall utilize HEPA filtration. Maintain surrounding area frequently.

Remove debris as it is created. Transport these outside the construction area in containers with tightly fitting lids.

5. The contractor shall not haul debris through patient-care areas without prior approval of the Resident Engineer and the Medical Center. When, approved, debris shall be hauled in enclosed dust proof containers or wrapped in plastic and sealed with duct tape. No sharp objects should be allowed to cut through the plastic. Wipe down the exterior of the containers with a damp rag to remove dust. All equipment, tools, material, etc. transported through occupied areas shall be made free from dust and moisture by vacuuming and wipe down.
6. There shall be no standing water during construction. This includes water in equipment drip pans and open containers within the construction areas. All accidental spills must be cleaned up and dried within 12 hours. Remove and dispose of porous materials that remain damp for more than 72 hours.
7. At completion, remove construction barriers and ceiling protection carefully, outside of normal work hours. Vacuum and clean all surfaces free of dust after the removal.

I. Final Cleanup:

1. Upon completion of project, or as work progresses, remove all construction debris from above ceiling, vertical shafts and utility chases that have been part of the construction.
2. Perform HEPA vacuum cleaning of all surfaces in the construction area. This includes walls, ceilings, cabinets, furniture (built-in or free standing), partitions, flooring, etc.
3. All new air ducts shall be cleaned prior to final inspection.

J. Exterior Construction

1. Contractor shall verify that dust will not be introduced into the medical center through intake vents, or building openings. HEPA filtration on intake vents is required where dust may be introduced.

2. Dust created from disturbance of soil such as from vehicle movement will be wetted with use of a water truck as necessary
3. All cutting, drilling, grinding, sanding, or disturbance of materials shall be accomplished with tools equipped with either local exhaust ventilation (i.e. vacuum systems) or wet suppression controls.

1.13 TUBERCULOSIS SCREENING

- A. Contractor shall provide written certification that all contract employees assigned to the work site have had a pre-placement tuberculin screening within 90 days prior to assignment to the worksite and been found have negative TB screening reactions. Contractors shall be required to show documentation of negative TB screening reactions for any additional workers who are added after the 90-day requirement before they will be allowed to work on the work site. NOTE: This can be the Center for Disease Control (CDC) and Prevention and two-step skin testing or a Food and Drug Administration (FDA)-approved blood test.
 1. Contract employees manifesting positive screening reactions to the tuberculin shall be examined according to current CDC guidelines prior to working on VHA property.
 2. Subsequently, if the employee is found without evidence of active (infectious) pulmonary TB, a statement documenting examination by a physician shall be on file with the employer (construction contractor), noting that the employee with a positive tuberculin screening test is without evidence of active (infectious) pulmonary TB.
 3. If the employee is found with evidence of active (infectious) pulmonary TB, the employee shall require treatment with a subsequent statement to the fact on file with the employer before being allowed to return to work on VHA property.

1.14 FIRE SAFETY

- A. Fire Safety Plan: Establish and maintain a site-specific fire protection program in accordance with 29 CFR 1926. Prior to start of work, prepare a plan detailing project-specific fire safety measures, including periodic status reports, and submit to Contracting Officer Representative for review for compliance with contract requirements in accordance with Section 01 33 23, SHOP DRAWINGS, PRODUCT DATA AND SAMPLES. This plan may be an element of the Accident Prevention Plan.
- B. Site and Building Access: Maintain free and unobstructed access to facility emergency services and for fire, police and other emergency response forces in accordance with NFPA 241.
- C. Separate temporary facilities, such as trailers, storage sheds, and dumpsters, from existing buildings and new construction by distances in accordance with NFPA 241. For small facilities with less than 6 m (20 feet) exposing overall length, separate by 3m (10 feet).
- D. Temporary Heating and Electrical: Install, use and maintain installations in accordance with 29 CFR 1926, NFPA 241 and NFPA 70.
- E. Means of Egress: Do not block exiting for occupied buildings, including paths from exits to roads. Minimize disruptions and coordinate with Contracting Officer Representative .
- F. Egress Routes for Construction Workers: Maintain free and unobstructed egress. Inspect daily. Report findings and corrective actions weekly to Contracting Officer Representative.
- G. Fire Extinguishers: Provide and maintain extinguishers in construction areas and temporary storage areas in accordance with 29 CFR 1926, NFPA 241 and NFPA 10.
- H. Flammable and Combustible Liquids: Store, dispense and use liquids in accordance with 29 CFR 1926, NFPA 241 and NFPA 30.
- J. Existing Fire Protection: Do not impair automatic sprinklers, smoke and heat detection, and fire alarm systems, except for portions immediately under construction, and temporarily for connections. Provide fire watch

for impairments more than 4 hours in a 24-hour period. Request interruptions in accordance with Article, OPERATIONS AND STORAGE AREAS, and coordinate with Contracting Officer Representative. All existing or temporary fire protection systems (fire alarms, sprinklers) located in construction areas shall be tested as coordinated with the medical center. Parameters for the testing and results of any tests performed shall be recorded by the medical center and copies provided to the Resident Engineer.

- N. Hot Work: Perform and safeguard hot work operations in accordance with NFPA 241 and NFPA 51B. Coordinate with Contracting Officer Representative. Obtain permits from Contracting Officer Representative at least 48 hours in advance. Designate contractor's responsible project-site fire prevention program manager to permit hot work.
- O. Fire Hazard Prevention and Safety Inspections: Inspect entire construction areas weekly. Coordinate with, and report findings and corrective actions weekly to Contracting Officer Representative.
- P. Smoking: Smoking is prohibited in and adjacent to construction areas inside existing buildings and additions under construction. In separate and detached buildings under construction, smoking is prohibited except in designated smoking rest areas.
- Q. Dispose of waste and debris in accordance with NFPA 241. Remove from buildings daily.

1.15 ELECTRICAL

- A. All electrical work shall comply with NFPA 70 (NEC), NFPA 70B, NFPA 70E, 29 CFR Part 1910 Subpart J - General Environmental Controls, 29 CFR Part 1910 Subpart S - Electrical, and 29 CFR 1926 Subpart K in addition to other references required by contract.
- B. All qualified persons performing electrical work under this contract shall be licensed journeyman or master electricians. All apprentice electricians performing under this contract shall be deemed unqualified persons unless they are working under the immediate supervision of a licensed electrician or master electrician.

C. All electrical work will be accomplished de-energized and in the Electrically Safe Work Condition (refer to NFPA 70E for Work Involving Electrical Hazards, including Exemptions to Work Permit). Any Contractor, subcontractor or temporary worker who fails to fully comply with this requirement is subject to immediate termination in accordance with FAR clause 52.236-5(c). Only in rare circumstance where achieving an electrically safe work condition prior to beginning work would increase or cause additional hazards, or is infeasible due to equipment design or operational limitations is energized work permitted. The Contracting Officer Representative with approval of the Medical Center Director will make the determination if the circumstances would meet the exception outlined above. An AHA specific to energized work activities will be developed, reviewed, and accepted prior to the start of that work.

1. Development of a Hazardous Electrical Energy Control Procedure is required prior to de-energization. A single Simple Lockout/Tagout Procedure for multiple work operations can only be used for work involving qualified person(s) de-energizing one set of conductors or circuit part source. Task specific Complex Lockout/Tagout Procedures are required at all other times.
2. Verification of the absence of voltage after de-energization and lockout/tagout is considered "energized electrical work" (live work) under NFPA 70E, and shall only be performed by qualified persons wearing appropriate shock protective (voltage rated) gloves and arc rate personal protective clothing and equipment, using Underwriters Laboratories (UL) tested and appropriately rated contact electrical testing instruments or equipment appropriate for the environment in which they will be used.
3. Personal Protective Equipment (PPE) and electrical testing instruments will be readily available for inspection by the Contracting Officer Representative

D. Before beginning any electrical work, an Activity Hazard Analysis (AHA) will be conducted to include Shock Hazard and Arc Flash Hazard analyses (NFPA Tables can be used only as a last alternative and it is strongly

suggested a full Arc Flash Hazard Analyses be conducted). Work shall not begin until the AHA for the work activity has been accepted by the Contracting Officer Representative and discussed with all engaged in the activity, including the Contractor, subcontractor(s), and Government on-site representatives at preparatory and initial control phase meetings.

- E. Ground-fault circuit interrupters. All 120-volt, single-phase 15- and 20-ampere receptacle outlets on construction sites shall have approved ground-fault circuit interrupters for personnel protection. "Assured Equipment Grounding Conductor Program" only is not allowed.

1.16 FALL PROTECTION

- A. The fall protection (FP) threshold height requirement is 6 ft (1.8 m) for ALL WORK, unless specified differently or the OSHA 29 CFR 1926 requirements are more stringent, to include steel erection activities, systems-engineered activities (prefabricated) metal buildings, residential (wood) construction and scaffolding work.
 - 1. The use of a Safety Monitoring System (SMS) as a fall protection method is prohibited.
 - 2. The use of Controlled Access Zone (CAZ) as a fall protection method is prohibited.
 - 3. A Warning Line System (WLS) may ONLY be used on floors or flat or low-sloped roofs (between 0 - 18.4 degrees or 4:12 slope) and shall be erected around all sides of the work area (See 29 CFR 1926.502(f) for construction of WLS requirements). Working within the WLS does not require FP. No worker shall be allowed in the area between the roof or floor edge and the WLS without FP. FP is required when working outside the WLS.
 - 4. Fall protection while using a ladder will be governed by the OSHA requirements.

1.17 SCAFFOLDS AND OTHER WORK PLATFORMS

- A. All scaffolds and other work platforms construction activities shall comply with 29 CFR 1926 Subpart L.

- B. The fall protection (FP) threshold height requirement is 6 ft (1.8 m) as stated in Section 1.16.
- C. The following hierarchy and prohibitions shall be followed in selecting appropriate work platforms.
 - 1. Scaffolds, platforms, or temporary floors shall be provided for all work except that can be performed safely from the ground or similar footing.
 - 2. Ladders less than 20 feet may be used as work platforms only when use of small hand tools or handling of light material is involved.
 - 3. Ladder jacks, lean-to, and prop-scaffolds are prohibited.
 - 4. Emergency descent devices shall not be used as working platforms.
- D. Contractors shall use a scaffold tagging system in which all scaffolds are tagged by the Competent Person. Tags shall be color-coded: green indicates the scaffold has been inspected and is safe to use; red indicates the scaffold is unsafe to use. Tags shall be readily visible, made of materials that will withstand the environment in which they are used, be legible and shall include:
 - 1. The Competent Person's name and signature;
 - 2. Dates of initial and last inspections.
- E. Mast Climbing work platforms: When access ladders, including masts designed as ladders, exceed 20 ft (6 m) in height, positive fall protection shall be used.

1.18 EXCAVATION AND TRENCHES

- A. All excavation and trenching work shall comply with 29 CFR 1926 Subpart P.
- B. All excavations and trenches 5 feet in depth or greater shall require a written trenching and excavation permit (NOTE - some States and other local jurisdictions require separate state/jurisdiction-issued excavation permits). The permit shall be completed and provided to the

Contracting Officer Representative prior to commencing work for the day. At the end of the day, the permit shall be closed out and provided to the Contracting Officer Representative. The permit shall be maintained onsite and include the following:

1. Determination of soil classification
 2. Indication that utilities have been located and identified. If utilities could not be located after all reasonable attempt, then excavating operations will proceed cautiously.
 3. Indication of selected excavation protective system.
 4. Indication that the spoil pile will be stored at least 2 feet from the edge of the excavation and safe access provided within 25 feet of the workers.
 5. Indication of assessment for a potential toxic, explosive, or oxygen deficient atmosphere.
- C. If not using an engineered protective system such as a trench box, shielding, shoring, or other Professional Engineer designed system and using a sloping or benching system, soil classification cannot be Solid Rock or Type A. All soil will be classified as Type B or Type C and sloped or benched in accordance with Appendix B of 29 CFR 1926.

1.19 CRANES

- A. All crane work shall comply with 29 CFR 1926 Subpart CC.
- B. Prior to operating a crane, the operator must be licensed, qualified or certified to operate the crane. Thus, all the provisions contained with Subpart CC are effective and there is no "Phase In" date of November 10, 2014.
- C. A detailed lift permit shall be submitted 14 days prior to the scheduled lift complete with route for truck carrying load, crane load analysis, siting of crane and path of swing. The lift will not be allowed without approval of this document.

D. Crane operators shall not carry loads

1. over the general public or VAMC personnel
2. over any occupied building unless
 - a. the top two floors are vacated
 - b. or overhead protection with a design live load of 300 psf is provided

1.20 CONTROL OF HAZARDOUS ENERGY (LOCKOUT/TAGOUT)

- A. All installation, maintenance, and servicing of equipment or machinery shall comply with 29 CFR 1910.147 except for specifically referenced operations in 29 CFR 1926 such as concrete & masonry equipment [1926.702(j)], heavy machinery & equipment [1926.600(a)(3)(i)], and process safety management of highly hazardous chemicals (1926.64). Control of hazardous electrical energy during the installation, maintenance, or servicing of electrical equipment shall comply with Section 1.15 to include NFPA 70E and other VA specific requirements discussed in the section.

1.21 CONFINED SPACE ENTRY

- A. All confined space entry shall comply with 29 CFR 1910.146 except for specifically referenced operations in 29 CFR 1926 such as excavations/trenches [1926.651(g)].
- B. A site-specific Confined Space Entry Plan (including permitting process) shall be developed and submitted to the Contracting Officer Representative

1.22 WELDING AND CUTTING

As specified in section 1.14, Hot Work: Perform and safeguard hot work operations in accordance with NFPA 241 and NFPA 51B. Coordinate with Contracting Officer Representative. Obtain permits from Contracting Officer Representative at least 48 hours in advance. Designate contractor's responsible project-site fire prevention program manager to permit hot work.

1.23 LADDERS

- A. All Ladder use shall comply with 29 CFR 1926 Subpart X.
- B. All portable ladders shall be of sufficient length and shall be placed so that workers will not stretch or assume a hazardous position.
- C. Manufacturer safety labels shall be in place on ladders
- D. Step Ladders shall not be used in the closed position
- E. Top steps or cap of step ladders shall not be used as a step
- F. Portable ladders, used as temporary access, shall extend at least 3 ft (0.9 m) above the upper landing surface.
 - 1. When a 3 ft (0.9-m) extension is not possible, a grasping device (such as a grab rail) shall be provided to assist workers in mounting and dismounting the ladder.
 - 2. In no case shall the length of the ladder be such that ladder deflection under a load would, by itself, cause the ladder to slip from its support.
- G. Ladders shall be inspected for visible defects on a daily basis and after any occurrence that could affect their safe use. Broken or damaged ladders shall be immediately tagged "DO NOT USE," or with similar wording, and withdrawn from service until restored to a condition meeting their original design.

1.24 FLOOR & WALL OPENINGS

- A. All floor and wall openings shall comply with 29 CFR 1926 Subpart M.
- B. Floor and roof holes/openings are any that measure over 2 in (51 mm) in any direction of a walking/working surface which persons may trip or fall into or where objects may fall to the level below. See 21.F for covering and labeling requirements. Skylights located in floors or roofs are considered floor or roof hole/openings.
- C. All floor, roof openings or hole into which a person can accidentally walk or fall through shall be guarded either by a railing system with

toeboards along all exposed sides or a load-bearing cover. When the cover is not in place, the opening or hole shall be protected by a removable guardrail system or shall be attended when the guarding system has been removed, or other fall protection system.

1. Covers shall be capable of supporting, without failure, at least twice the weight of the worker, equipment and material combined.
2. Covers shall be secured when installed, clearly marked with the word "HOLE", "COVER" or "Danger, Roof Opening-Do Not Remove" or color-coded or equivalent methods (e.g., red or orange "X"). Workers must be made aware of the meaning for color coding and equivalent methods.
3. Roofing material, such as roofing membrane, insulation or felts, covering or partly covering openings or holes, shall be immediately cut out. No hole or opening shall be left unattended unless covered.
4. Non-load-bearing skylights shall be guarded by a load-bearing skylight screen, cover, or railing system along all exposed sides.
5. Workers are prohibited from standing/walking on skylights.

- - - E N D - - -

SECTION 01 42 19
REFERENCE STANDARDS

PART 1 - GENERAL

1.1 DESCRIPTION

This section specifies the availability and source of references and standards specified in the project manual under paragraphs APPLICABLE PUBLICATIONS and/or shown on the drawings.

1.2 AVAILABILITY OF SPECIFICATIONS LISTED IN THE GSA INDEX OF FEDERAL SPECIFICATIONS, STANDARDS AND COMMERCIAL ITEM DESCRIPTIONS FPMR PART 101-29 (FAR 52.211-1) (AUG 1998)

- A. The GSA Index of Federal Specifications, Standards and Commercial Item Descriptions, FPMR Part 101-29 and copies of specifications, standards, and commercial item descriptions cited in the solicitation may be obtained for a fee by submitting a request to - GSA Federal Supply Service, Specifications Section, Suite 8100, 470 East L'Enfant Plaza, SW, Washington, DC 20407, Telephone (202) 619-8925, Facsimile (202) 619-8978.
- B. If the General Services Administration, Department of Agriculture, or Department of Veterans Affairs issued this solicitation, a single copy of specifications, standards, and commercial item descriptions cited in this solicitation may be obtained free of charge by submitting a request to the addressee in paragraph (a) of this provision. Additional copies will be issued for a fee.

1.3 AVAILABILITY FOR EXAMINATION OF SPECIFICATIONS NOT LISTED IN THE GSA INDEX OF FEDERAL SPECIFICATIONS, STANDARDS AND COMMERCIAL ITEM DESCRIPTIONS (FAR 52.211-4) (JUN 1988)

The specifications and standards cited in this solicitation can be examined at the following location:

DEPARTMENT OF VETERANS AFFAIRS
Office of Construction & Facilities Management
Facilities Quality Service (00CFM1A)
425 Eye Street N.W, (sixth floor)
Washington, DC 20001
Telephone Numbers: (202) 632-5249 or (202) 632-5178
Between 9:00 AM - 3:00 PM

1.4 AVAILABILITY OF SPECIFICATIONS NOT LISTED IN THE GSA INDEX OF FEDERAL SPECIFICATIONS, STANDARDS AND COMMERCIAL ITEM DESCRIPTIONS (FAR 52.211-3) (JUN 1988)

The specifications cited in this solicitation may be obtained from the associations or organizations listed below.

AA	Aluminum Association Inc. http://www.aluminum.org
AABC	Associated Air Balance Council http://www.aabchg.com
AAMA	American Architectural Manufacturer's Association http://www.aamanet.org
AAN	American Nursery and Landscape Association http://www.anla.org
AASHTO	American Association of State Highway and Transportation Officials http://www.aashto.org
AATCC	American Association of Textile Chemists and Colorists http://www.aatcc.org
ACGIH	American Conference of Governmental Industrial Hygienists http://www.acgih.org
ACI	American Concrete Institute http://www.aci-int.net
ACPA	American Concrete Pipe Association http://www.concrete-pipe.org
ACPPA	American Concrete Pressure Pipe Association http://www.acppa.org
ADC	Air Diffusion Council http://flexibleduct.org
AGA	American Gas Association http://www.aga.org
AGC	Associated General Contractors of America http://www.agc.org

AGMA	American Gear Manufacturers Association, Inc. http://www.agma.org
AHAM	Association of Home Appliance Manufacturers http://www.aham.org
AISC	American Institute of Steel Construction http://www.aisc.org
AISI	American Iron and Steel Institute http://www.steel.org
AITC	American Institute of Timber Construction http://www.aitc-glulam.org
AMCA	Air Movement and Control Association, Inc. http://www.amca.org
ANLA	American Nursery & Landscape Association http://www.anla.org
ANSI	American National Standards Institute, Inc. http://www.ansi.org
APA	The Engineered Wood Association http://www.apawood.org
ARI	Air-Conditioning and Refrigeration Institute http://www.ari.org
ASAE	American Society of Agricultural Engineers http://www.asae.org
ASCE	American Society of Civil Engineers http://www.asce.org
ASHRAE	American Society of Heating, Refrigerating, and Air-Conditioning Engineers http://www.ashrae.org
ASME	American Society of Mechanical Engineers http://www.asme.org

ASSE	American Society of Sanitary Engineering http://www.asse-plumbing.org
ASTM	American Society for Testing and Materials http://www.astm.org
AWI	Architectural Woodwork Institute http://www.awinet.org
AWS	American Welding Society http://www.aws.org
AWWA	American Water Works Association http://www.awwa.org
BHMA	Builders Hardware Manufacturers Association http://www.buildershardware.com
BIA	Brick Institute of America http://www.bia.org
CAGI	Compressed Air and Gas Institute http://www.cagi.org
CGA	Compressed Gas Association, Inc. http://www.cganet.com
CI	The Chlorine Institute, Inc. http://www.chlorineinstitute.org
CISCA	Ceilings and Interior Systems Construction Association http://www.cisca.org
CISPI	Cast Iron Soil Pipe Institute http://www.cispi.org
CLFMI	Chain Link Fence Manufacturers Institute http://www.chainlinkinfo.org
CPMB	Concrete Plant Manufacturers Bureau http://www.cpmc.org
CRA	California Redwood Association http://www.calredwood.org

CRSI	Concrete Reinforcing Steel Institute http://www.crsi.org
CTI	Cooling Technology Institute http://www.cti.org
DHI	Door and Hardware Institute http://www.dhi.org
EGSA	Electrical Generating Systems Association http://www.egsa.org
EEI	Edison Electric Institute http://www.eei.org
EPA	Environmental Protection Agency http://www.epa.gov
ETL	ETL Testing Laboratories, Inc. http://www.etl.com
FAA	Federal Aviation Administration http://www.faa.gov
FCC	Federal Communications Commission http://www.fcc.gov
FPS	The Forest Products Society http://www.forestprod.org
GANA	Glass Association of North America http://www.cssinfo.com/info/gana.html/
FM	Factory Mutual Insurance http://www.fmglobal.com
GA	Gypsum Association http://www.gypsum.org
GSA	General Services Administration http://www.gsa.gov
HI	Hydraulic Institute http://www.pumps.org

HPVA	Hardwood Plywood & Veneer Association http://www.hpva.org
ICBO	International Conference of Building Officials http://www.icbo.org
ICEA	Insulated Cable Engineers Association Inc. http://www.icea.net
\ICAC	Institute of Clean Air Companies http://www.icac.com
IEEE	Institute of Electrical and Electronics Engineers http://www.ieee.org/
IMSA	International Municipal Signal Association http://www.imsasafety.org
IPCEA	Insulated Power Cable Engineers Association
NBMA	Metal Buildings Manufacturers Association http://www.mbma.com
MSS	Manufacturers Standardization Society of the Valve and Fittings Industry Inc. http://www.mss-hq.com
NAAMM	National Association of Architectural Metal Manufacturers http://www.naamm.org
NAPHCC	Plumbing-Heating-Cooling Contractors Association http://www.phccweb.org.org
NBS	National Bureau of Standards See - NIST
NBBPVI	National Board of Boiler and Pressure Vessel Inspectors http://www.nationboard.org
NEC	National Electric Code See - NFPA National Fire Protection Association
NEMA	National Electrical Manufacturers Association http://www.nema.org

NFPA	National Fire Protection Association http://www.nfpa.org
NHLA	National Hardwood Lumber Association http://www.natlhardwood.org
NIH	National Institute of Health http://www.nih.gov
NIST	National Institute of Standards and Technology http://www.nist.gov
NLMA	Northeastern Lumber Manufacturers Association, Inc. http://www.nelma.org
NPA	National Particleboard Association 18928 Premiere Court Gaithersburg, MD 20879 (301) 670-0604
NSF	National Sanitation Foundation http://www.nsf.org
NWWDA	Window and Door Manufacturers Association http://www.nwwda.org
OSHA	Occupational Safety and Health Administration Department of Labor http://www.osha.gov
PCA	Portland Cement Association http://www.portcement.org
PCI	Precast Prestressed Concrete Institute http://www.pci.org
PPI	The Plastic Pipe Institute http://www.plasticpipe.org
PEI	Porcelain Enamel Institute, Inc. http://www.porcelainenamel.com
PTI	Post-Tensioning Institute http://www.post-tensioning.org

RFCI	The Resilient Floor Covering Institute http://www.rfci.com
RIS	Redwood Inspection Service See - CRA
RMA	Rubber Manufacturers Association, Inc. http://www.rma.org
SCMA	Southern Cypress Manufacturers Association http://www.cypressinfo.org
SDI	Steel Door Institute http://www.steeldoor.org
IGMA	Insulating Glass Manufacturers Alliance http://www.igmaonline.org
SJI	Steel Joist Institute http://www.steeljoist.org
SMACNA	Sheet Metal and Air-Conditioning Contractors National Association, Inc. http://www.smacna.org
SSPC	The Society for Protective Coatings http://www.sspc.org
STI	Steel Tank Institute http://www.steeltank.com
SWI	Steel Window Institute http://www.steelwindows.com
TCA	Tile Council of America, Inc. http://www.tileusa.com
TEMA	Tubular Exchange Manufacturers Association http://www.tema.org
TPI	Truss Plate Institute, Inc. 583 D'Onofrio Drive; Suite 200 Madison, WI 53719 (608) 833-5900

Salisbury VAMC
Parking Safety
Salisbury, NC 28144

1/31/2018
Bid Set
Project No. 659-18-206

UBC The Uniform Building Code
 See ICBO

UL Underwriters' Laboratories Incorporated
 <http://www.ul.com>

ULC Underwriters' Laboratories of Canada
 <http://www.ulc.ca>

WCLIB West Coast Lumber Inspection Bureau
 6980 SW Varns Road, P.O. Box 23145
 Portland, OR 97223
 (503) 639-0651

WRCLA Western Red Cedar Lumber Association
 P.O. Box 120786
 New Brighton, MN 55112
 (612) 633-4334

WWPA Western Wood Products Association
 <http://www.wwpa.org>

- - - E N D - - -

SECTION 01 57 19
TEMPORARY ENVIRONMENTAL CONTROLS

PART 1 - GENERAL

1.1 DESCRIPTION

- A. This section specifies the control of environmental pollution and damage that the Contractor must consider for air, water, and land resources. It includes management of visual aesthetics, noise, solid waste, radiant energy, and radioactive materials, as well as other pollutants and resources encountered or generated by the Contractor. The Contractor is obligated to consider specified control measures with the costs included within the various contract items of work.
- B. Environmental pollution and damage is defined as the presence of chemical, physical, or biological elements or agents which:
1. Adversely effect human health or welfare,
 2. Unfavorably alter ecological balances of importance to human life,
 3. Effect other species of importance to humankind, or;
 4. Degrade the utility of the environment for aesthetic, cultural, and historical purposes.
- C. Definitions of Pollutants:
1. Chemical Waste: Petroleum products, bituminous materials, salts, acids, alkalis, herbicides, pesticides, organic chemicals, and inorganic wastes.
 2. Debris: Combustible and noncombustible wastes, such as leaves, tree trimmings, ashes, and waste materials resulting from construction or maintenance and repair work.
 3. Sediment: Soil and other debris that has been eroded and transported by runoff water.
 4. Solid Waste: Rubbish, debris, garbage, and other discarded solid materials resulting from industrial, commercial, and agricultural operations and from community activities.
 5. Surface Discharge: The term "Surface Discharge" implies that the water is discharged with possible sheeting action and subsequent soil erosion may occur. Waters that are surface discharged may terminate in drainage ditches, storm sewers, creeks, and/or "water of the United States" and would require a permit to discharge water from the governing agency.

6. Rubbish: Combustible and noncombustible wastes such as paper, boxes, glass and crockery, metal and lumber scrap, tin cans, and bones.
7. Sanitary Wastes:
 - a. Sewage: Domestic sanitary sewage and human and animal waste.
 - b. Garbage: Refuse and scraps resulting from preparation, cooking, dispensing, and consumption of food.

1.2 QUALITY CONTROL

- A. Establish and maintain quality control for the environmental protection of all items set forth herein.
- B. Record on daily reports any problems in complying with laws, regulations, and ordinances. Note any corrective action taken.

1.3 REFERENCES

- A. The publications listed below form a part of this specification to the extent referenced. The publications are referred to in the text by basic designation only.
- B. U.S. National Archives and Records Administration (NARA):
33 CFR 328.....Definitions

1.4 SUBMITTALS

- A. In accordance with Section, 01 33 23, SHOP DRAWINGS, PRODUCT DATA, AND SAMPLES, furnish the following:
 1. Environmental Protection Plan: After the contract is awarded and prior to the commencement of the work, the Contractor shall meet with the COR to discuss the proposed Environmental Protection Plan and to develop mutual understanding relative to details of environmental protection. Not more than 20 days after the meeting, the Contractor shall prepare and submit to the COR for approval, a written and/or graphic Environmental Protection Plan including, but not limited to, the following:
 - a. Name(s) of person(s) within the Contractor's organization who is (are) responsible for ensuring adherence to the Environmental Protection Plan.
 - b. Name(s) and qualifications of person(s) responsible for manifesting hazardous waste to be removed from the site.
 - c. Name(s) and qualifications of person(s) responsible for training the Contractor's environmental protection personnel.
 - d. Description of the Contractor's environmental protection personnel training program.

- e. A list of Federal, State, and local laws, regulations, and permits concerning environmental protection, pollution control, noise control and abatement that are applicable to the Contractor's proposed operations and the requirements imposed by those laws, regulations, and permits.
 - f. Methods for protection of features to be preserved within authorized work areas including trees, shrubs, vines, grasses, ground cover, landscape features, air and water quality, fish and wildlife, soil, historical, and archeological and cultural resources.
 - g. Procedures to provide the environmental protection that comply with the applicable laws and regulations. Describe the procedures to correct pollution of the environment due to accident, natural causes, or failure to follow the procedures as described in the Environmental Protection Plan.
 - h. Permits, licenses, and the location of the solid waste disposal area.
 - i. Drawings showing locations of any proposed temporary excavations or embankments for haul roads, material storage areas, structures, sanitary facilities, and stockpiles of excess or spoil materials. Include as part of an Erosion Control Plan approved by the District Office of the U.S. Soil Conservation Service and the Department of Veterans Affairs.
 - j. Environmental Monitoring Plans for the job site including land, water, air, and noise.
 - k. Work Area Plan showing the proposed activity in each portion of the area and identifying the areas of limited use or nonuse. Plan should include measures for marking the limits of use areas. This plan may be incorporated within the Erosion Control Plan.
- B. Approval of the Contractor's Environmental Protection Plan will not relieve the Contractor of responsibility for adequate and continued control of pollutants and other environmental protection measures.

1.5 PROTECTION OF ENVIRONMENTAL RESOURCES

- A. Protect environmental resources within the project boundaries and those affected outside the limits of permanent work during the entire period of this contract. Confine activities to areas defined by the specifications and drawings.

- B. Protection of Land Resources: Prior to construction, identify all land resources to be preserved within the work area. Do not remove, cut, deface, injure, or destroy land resources including trees, shrubs, vines, grasses, top soil, and land forms without permission from the COR. Do not fasten or attach ropes, cables, or guys to trees for anchorage unless specifically authorized, or where special emergency use is permitted.
1. Work Area Limits: Prior to any construction, mark the areas that require work to be performed under this contract. Mark or fence isolated areas within the general work area that are to be saved and protected. Protect monuments, works of art, and markers before construction operations begin. Convey to all personnel the purpose of marking and protecting all necessary objects.
 2. Protection of Landscape: Protect trees, shrubs, vines, grasses, land forms, and other landscape features shown on the drawings to be preserved by marking, fencing, or using any other approved techniques.
 - a. Box and protect from damage existing trees and shrubs to remain on the construction site.
 - b. Immediately repair all damage to existing trees and shrubs by trimming, cleaning, and painting with antiseptic tree paint.
 - c. Do not store building materials or perform construction activities closer to existing trees or shrubs than the farthest extension of their limbs.
 3. Reduction of Exposure of Unprotected Erodible Soils: Plan and conduct earthwork to minimize the duration of exposure of unprotected soils. Clear areas in reasonably sized increments only as needed to use. Form earthwork to final grade as shown. Immediately protect side slopes and back slopes upon completion of rough grading.
 4. Temporary Protection of Disturbed Areas: Construct diversion ditches, benches, and berms to retard and divert runoff from the construction site to protected drainage areas approved under paragraph 208 of the Clean Water Act.
 - a. Reuse or conserve the collected topsoil sediment as directed by the COR.
 - b. Institute effluent quality monitoring programs as required by Federal, State, and local environmental agencies.

5. Erosion and Sedimentation Control Devices: The erosion and sediment controls selected and maintained by the Contractor shall be such that water quality standards are not violated as a result of the Contractor's activities. Construct or install all temporary and permanent erosion and sedimentation control features on the Environmental Protection Plan. Maintain temporary erosion and sediment control measures such as berms, dikes, drains, sedimentation basins, grassing, and mulching, until permanent drainage and erosion control facilities are completed and operative.
 6. Manage borrow areas on Government property to minimize erosion and to prevent sediment from entering nearby water courses or lakes.
 7. Manage and control spoil areas on Government property to limit spoil to areas on the Environmental Protection Plan and prevent erosion of soil or sediment from entering nearby water courses or lakes.
 8. Protect adjacent areas from despoilment by temporary excavations and embankments.
 9. Handle and dispose of solid wastes in such a manner that will prevent contamination of the environment. Place solid wastes (excluding clearing debris) in containers that are emptied on a regular schedule. Transport all solid waste off Government property and dispose of waste in compliance with Federal, State, and local requirements.
 10. Store chemical waste away from the work areas in corrosion resistant containers and dispose of waste in accordance with Federal, State, and local regulations.
 11. Handle discarded materials other than those included in the solid waste category as directed by the COR.
- C. Protection of Water Resources: Keep construction activities under surveillance, management, and control to avoid pollution of surface and ground waters and sewer systems. Implement management techniques to control water pollution by the listed construction activities that are included in this contract.
1. Washing and Curing Water: Do not allow wastewater directly derived from construction activities to enter water areas. Collect and place wastewater in retention ponds allowing the suspended material to settle, the pollutants to separate, or the water to evaporate.

- D. Protection of Fish and Wildlife Resources: Keep construction activities under surveillance, management, and control to minimize interference with, disturbance of, or damage to fish and wildlife.
- E. Protection of Air Resources: Keep construction activities under surveillance, management, and control to minimize pollution of air resources. Burning is not permitted on the job site. Keep activities, equipment, processes, and work operated or performed, in strict accordance with the State of Louisiana and Federal emission and performance laws and standards. Maintain ambient air quality standards set by the Environmental Protection Agency, for those construction operations and activities specified.
1. Particulates: Control dust particles, aerosols, and gaseous by-products from all construction activities, processing, and preparation of materials (such as from asphaltic batch plants) at all times, including weekends, holidays, and hours when work is not in progress.
 2. Particulates Control: Maintain all excavations, stockpiles, haul roads, permanent and temporary access roads, plant sites, spoil areas, borrow areas, and all other work areas within or outside the project boundaries free from particulates which would cause a hazard or a nuisance. Sprinklering, chemical treatment of an approved type, light bituminous treatment, baghouse, scrubbers, electrostatic precipitators, or other methods are permitted to control particulates in the work area.
 3. Hydrocarbons and Carbon Monoxide: Control monoxide emissions from equipment to Federal and State allowable limits.
 4. Odors: Control odors of construction activities and prevent obnoxious odors from occurring.
- F. Reduction of Noise: Minimize noise using every action possible. Perform noise-producing work in less sensitive hours of the day or week as directed by the COR. Maintain noise-produced work at or below the decibel levels and within the time periods specified.
1. Perform construction activities involving repetitive, high-level impact noise only between 8:00 a.m. and 6:00 p.m unless otherwise permitted by local ordinance or the COR. Repetitive impact noise on the property shall not exceed the following dB limitations:

Time Duration of Impact Noise

Sound Level in dB

More than 12 minutes in any hour	70
Less than 30 seconds of any hour	85
Less than three minutes of any hour	80
Less than 12 minutes of any hour	75

2. Provide sound-deadening devices on equipment and take noise abatement measures that are necessary to comply with the requirements of this contract, consisting of, but not limited to, the following:
- a. Maintain maximum permissible construction equipment noise levels at 15 m (50 feet) (dBA):

EARTHMOVING		MATERIALS HANDLING	
FRONT LOADERS	75	CONCRETE MIXERS	75
BACKHOES	75	CONCRETE PUMPS	75
DOZERS	75	CRANES	75
TRACTORS	75	DERRICKS IMPACT	75
SCAPERS	80	PILE DRIVERS	95
GRADERS	75	JACK HAMMERS	75
TRUCKS	75	ROCK DRILLS	80
PAVERS, STATIONARY	80	PNEUMATIC TOOLS	80
PUMPS	75	BLASTING	n/a
GENERATORS	75	SAWS	75
COMPRESSORS	75	VIBRATORS	75

- b. Use shields or other physical barriers to restrict noise transmission.
- c. Provide soundproof housings or enclosures for noise-producing machinery.
- d. Use efficient silencers on equipment air intakes.
- e. Use efficient intake and exhaust mufflers on internal combustion engines that are maintained so equipment performs below noise levels specified.
- f. Line hoppers and storage bins with sound deadening material.
- g. Conduct truck loading, unloading, and hauling operations so that noise is kept to a minimum.

3. Measure sound level for noise exposure due to the construction at least once every five successive working days while work is being performed above 55 dB(A) noise level. Measure noise exposure at the property line or 15 m (50 feet) from the noise source, whichever is greater. Measure the sound levels on the A weighing network of a General Purpose sound level meter at slow response. To minimize the effect of reflective sound waves at buildings, take measurements at 900 to 1800 mm (three to six feet) in front of any building face. COR

- G. Restoration of Damaged Property: If any direct or indirect damage is done to public or private property resulting from any act, omission, neglect, or misconduct, the Contractor shall restore the damaged property to a condition equal to that existing before the damage at no additional cost to the Government. Repair, rebuild, or restore property as directed or make good such damage in an acceptable manner.
- H. Final Clean-up: On completion of project and after removal of all debris, rubbish, and temporary construction, Contractor shall leave the construction area in a clean condition satisfactory to the COR. Cleaning shall include off the station disposal of all items and materials not required to be salvaged, as well as all debris and rubbish resulting from demolition and new work operations.

- - - E N D - - -

SECTION 01 74 19
CONSTRUCTION WASTE MANAGEMENT

PART 1 - GENERAL

1.1 DESCRIPTION

- A. This section specifies the requirements for the management of non-hazardous building construction and demolition waste.
- B. Waste disposal in landfills shall be minimized to the greatest extent possible. Of the inevitable waste that is generated, as much of the waste material as economically feasible shall be salvaged, recycled or reused.
- C. Contractor shall use all reasonable means to divert construction and demolition waste from landfills and incinerators, and facilitate their salvage and recycle not limited to the following:
 - 1. Waste Management Plan development and implementation.
 - 2. Techniques to minimize waste generation.
 - 3. Sorting and separating of waste materials.
 - 4. Salvage of existing materials and items for reuse or resale.
 - 5. Recycling of materials that cannot be reused or sold.
- D. At a minimum the following waste categories shall be diverted from landfills:
 - 1. Soil.
 - 2. Inerts (eg, concrete, masonry and asphalt).
 - 3. Clean dimensional wood and palette wood.
 - 4. Green waste (biodegradable landscaping materials).
 - 5. Engineered wood products (plywood, particle board and I-joists, etc).
 - 6. Metal products (eg, steel, wire, beverage containers, copper, etc).
 - 7. Cardboard, paper and packaging.
 - 8. Bitumen roofing materials.
 - 9. Plastics (eg, ABS, PVC).
 - 10. Carpet and/or pad.
 - 11. Gypsum board.
 - 12. Insulation.
 - 13. Paint.
 - 14. Fluorescent lamps.

1.2 RELATED WORK

- A. Section 02 41 00, DEMOLITION.

B. Section 01 00 00, GENERAL REQUIREMENTS.

1.3 QUALITY ASSURANCE

- A. Contractor shall practice efficient waste management when sizing, cutting and installing building products. Processes shall be employed to ensure the generation of as little waste as possible. Construction /Demolition waste includes products of the following:
 - 1. Excess or unusable construction materials.
 - 2. Packaging used for construction products.
 - 3. Poor planning and/or layout.
 - 4. Construction error.
 - 5. Over ordering.
 - 6. Weather damage.
 - 7. Contamination.
 - 8. Mishandling.
 - 9. Breakage.
- B. Establish and maintain the management of non-hazardous building construction and demolition waste set forth herein. Conduct a site assessment to estimate the types of materials that will be generated by demolition and construction.
- C. Contractor shall develop and implement procedures to recycle construction and demolition waste to a minimum of 50 percent.
- D. Contractor shall be responsible for implementation of any special programs involving rebates or similar incentives related to recycling. Any revenues or savings obtained from salvage or recycling shall accrue to the contractor.
- E. Contractor shall provide all demolition, removal and legal disposal of materials. Contractor shall ensure that facilities used for recycling, reuse and disposal shall be permitted for the intended use to the extent required by local, state, federal regulations. The Whole Building Design Guide website <http://www.wbdg.org/tools/cwm.php> provides a Construction Waste Management Database that contains information on companies that haul, collect, and process recyclable debris from construction projects.
- F. Contractor shall assign a specific area to facilitate separation of materials for reuse, salvage, recycling, and return. Such areas are to be kept neat and clean and clearly marked in order to avoid contamination or mixing of materials.

- G. Contractor shall provide on-site instructions and supervision of separation, handling, salvaging, recycling, reuse and return methods to be used by all parties during waste generating stages.
- H. Record on daily reports any problems in complying with laws, regulations and ordinances with corrective action taken.

1.4 TERMINOLOGY

- A. Class III Landfill: A landfill that accepts non-hazardous resources such as household, commercial and industrial waste resulting from construction, remodeling, repair and demolition operations.
- B. Clean: Untreated and unpainted; uncontaminated with adhesives, oils, solvents, mastics and like products.
- C. Construction and Demolition Waste: Includes all non-hazardous resources resulting from construction, remodeling, alterations, repair and demolition operations.
- D. Dismantle: The process of parting out a building in such a way as to preserve the usefulness of its materials and components.
- E. Disposal: Acceptance of solid wastes at a legally operating facility for the purpose of land filling (includes Class III landfills and inert fills).
- F. Inert Backfill Site: A location, other than inert fill or other disposal facility, to which inert materials are taken for the purpose of filling an excavation, shoring or other soil engineering operation.
- G. Inert Fill: A facility that can legally accept inert waste, such as asphalt and concrete exclusively for the purpose of disposal.
- H. Inert Solids/Inert Waste: Non-liquid solid resources including, but not limited to, soil and concrete that does not contain hazardous waste or soluble pollutants at concentrations in excess of water-quality objectives established by a regional water board, and does not contain significant quantities of decomposable solid resources.
- I. Mixed Debris: Loads that include commingled recyclable and non-recyclable materials generated at the construction site.
- J. Mixed Debris Recycling Facility: A solid resource processing facility that accepts loads of mixed construction and demolition debris for the purpose of recovering re-usable and recyclable materials and disposing non-recyclable materials.

- K. Permitted Waste Hauler: A company that holds a valid permit to collect and transport solid wastes from individuals or businesses for the purpose of recycling or disposal.
- L. Recycling: The process of sorting, cleansing, treating, and reconstituting materials for the purpose of using the altered form in the manufacture of a new product. Recycling does not include burning, incinerating or thermally destroying solid waste.
1. On-site Recycling - Materials that are sorted and processed on site for use in an altered state in the work, i.e. concrete crushed for use as a sub-base in paving.
 2. Off-site Recycling - Materials hauled to a location and used in an altered form in the manufacture of new products.
- M. Recycling Facility: An operation that can legally accept materials for the purpose of processing the materials into an altered form for the manufacture of new products. Depending on the types of materials accepted and operating procedures, a recycling facility may or may not be required to have a solid waste facilities permit or be regulated by the local enforcement agency.
- N. Reuse: Materials that are recovered for use in the same form, on-site or off-site.
- O. Return: To give back reusable items or unused products to vendors for credit.
- P. Salvage: To remove waste materials from the site for resale or re-use by a third party.
- Q. Source-Separated Materials: Materials that are sorted by type at the site for the purpose of reuse and recycling.
- R. Solid Waste: Materials that have been designated as non-recyclable and are discarded for the purposes of disposal.
- S. Transfer Station: A facility that can legally accept solid waste for the purpose of temporarily storing the materials for re-loading onto other trucks and transporting them to a landfill for disposal, or recovering some materials for re-use or recycling.

1.5 SUBMITTALS

- A. In accordance with Section 01 33 23, SHOP DRAWINGS, PRODUCT DATA, and SAMPLES, furnish the following:

B. Prepare and submit to the Contracting Officer Representative a written demolition debris management plan. The plan shall include, but not be limited to, the following information:

1. Procedures to be used for debris management.
2. Techniques to be used to minimize waste generation.
3. Analysis of the estimated job site waste to be generated:
 - a. List of each material and quantity to be salvaged, reused, recycled.
 - b. List of each material and quantity proposed to be taken to a landfill.
4. Detailed description of the Means/Methods to be used for material handling.
 - a. On site: Material separation, storage, protection where applicable.
 - b. Off site: Transportation means and destination. Include list of materials.
 - 1) Description of materials to be site-separated and self-hauled to designated facilities.
 - 2) Description of mixed materials to be collected by designated waste haulers and removed from the site.
 - c. The names and locations of mixed debris reuse and recycling facilities or sites.
 - d. The names and locations of trash disposal landfill facilities or sites.
 - e. Documentation that the facilities or sites are approved to receive the materials.

C. Designated Manager responsible for instructing personnel, supervising, documenting and administer over meetings relevant to the Waste Management Plan.

D. Monthly summary of construction and demolition debris diversion and disposal, quantifying all materials generated at the work site and disposed of or diverted from disposal through recycling.

1.6 APPLICABLE PUBLICATIONS

A Publications listed below form a part of this specification to the extent referenced. Publications are referenced by the basic designation only. In the event that criteria requirements conflict, the most stringent requirements shall be met.

B. U.S. Green Building Council (USGBC):

LEED Green Building Rating System for New Construction

1.7 RECORDS

Maintain records to document the quantity of waste generated; the quantity of waste diverted through sale, reuse, or recycling; and the quantity of waste disposed by landfill or incineration. Records shall be kept in accordance with the LEED Reference Guide and LEED Template.

PART 2 - PRODUCTS

2.1 MATERIALS

- A. List of each material and quantity to be salvaged, recycled, reused.
- B. List of each material and quantity proposed to be taken to a landfill.
- C. Material tracking data: Receiving parties, dates removed, transportation costs, weight tickets, tipping fees, manifests, invoices, net total costs or savings.

PART 3 - EXECUTION

3.1 COLLECTION

- A. Provide all necessary containers, bins and storage areas to facilitate effective waste management.
- B. Clearly identify containers, bins and storage areas so that recyclable materials are separated from trash and can be transported to respective recycling facility for processing.
- C. Hazardous wastes shall be separated, stored, disposed of according to local, state, federal regulations.

3.2 DISPOSAL

- A. Contractor shall be responsible for transporting and disposing of materials that cannot be delivered to a source-separated or mixed materials recycling facility to a transfer station or disposal facility that can accept the materials in accordance with state and federal regulations.
- B. Construction or demolition materials with no practical reuse or that cannot be salvaged or recycled shall be disposed of at a landfill or incinerator.

3.3 REPORT

- A. With each application for progress payment, submit a summary of construction and demolition debris diversion and disposal including beginning and ending dates of period covered.

- B. Quantify all materials diverted from landfill disposal through salvage or recycling during the period with the receiving parties, dates removed, transportation costs, weight tickets, manifests, invoices. Include the net total costs or savings for each salvaged or recycled material.
- C. Quantify all materials disposed of during the period with the receiving parties, dates removed, transportation costs, weight tickets, tipping fees, manifests, invoices. Include the net total costs for each disposal.

- - - E N D - - -

SECTION 05 50 00
METAL FABRICATIONS

PART 1 - GENERAL

1.1 DESCRIPTION

- A. This section specifies items and assemblies fabricated from structural steel shapes and other materials as shown and specified.
- B. Items specified.
 - 1. Support for Wall and Ceiling Mounted Items: (12, 14A, 14C)
 - 2. Frames: (24E)
 - 3. Guards
 - 4. Gratings
 - 5. Loose Lintels
 - 6. Shelf Angles
 - 7. Plate Door Sill
 - 8. Safety Nosings
 - 9. Railings: (10)

1.2 RELATED WORK

- A. Railings attached to steel stairs: Section 05 51 00, METAL STAIRS.
- B. Colors, finishes, and textures: Section 09 06 00, SCHEDULE FOR FINISHES.
- C. Prime and finish painting: Section 09 91 00, PAINTING.
- D. Stainless steel corner guards: Section 10 26 00, WALL AND DOOR PROTECTION.

1.3 SUBMITTALS

- A. Submit in accordance with Section 01 33 23, SHOP DRAWINGS, PRODUCT DATA, AND SAMPLES.
- B. Manufacturer's Literature and Data:

Grating, each type	Floor plate
	Wheel guards
Manhole Covers	Safety nosing

- C. Shop Drawings:
 - 1. Each item specified, showing complete detail, location in the project, material and size of components, method of joining various components and assemblies, finish, and location, size and type of anchors.
 - 2. Mark items requiring field assembly for erection identification and furnish erection drawings and instructions.
 - 3. Provide templates and rough-in measurements as required.

D. Manufacturer's Certificates:

1. Anodized finish as specified.
2. Live load designs as specified.

E. Installer's Certificates:

1. Provide current welding certificate for installers.

F. Design Calculations for specified live loads including dead loads.

G. Furnish setting drawings and instructions for installation of anchors to be preset into concrete and masonry work, and for the positioning of items having anchors to be built into concrete or masonry construction.

1.4 QUALITY ASSURANCE

- A. Each manufactured product shall meet, as a minimum, the requirements specified, and shall be a standard commercial product of a manufacturer regularly presently manufacturing items of type specified.
- B. Each product type shall be the same and be made by the same manufacturer.
- C. Assembled product to the greatest extent possible before delivery to the site.
- D. Include additional features, which are not specifically prohibited by this specification, but which are a part of the manufacturer's standard commercial product.
- E. Welding Qualifications: Qualify procedures and personnel according to the following:
1. AWS D1.1/D1.1M, "Structural Welding Code - Steel."
 2. AWS D1.2/D1.2M, "Structural Welding Code - Aluminum."
 3. AWS D1.3/D1.3M, "Structural Welding Code - Sheet Steel."
 4. AWS D1.6/D1.6M, "Structural Welding Code - Stainless Steel."

1.5 APPLICABLE PUBLICATIONS

- A. The publications listed below form a part of this specification to the extent referenced. The publications are referenced in the text by the basic designation only.
- B. American Society of Mechanical Engineers (ASME):
- B18.6.1-97.....Wood Screws
- B18.2.2-87(R2005).....Square and Hex Nuts
- C. American Society for Testing and Materials (ASTM):
- A36/A36M-08.....Structural Steel
- A47-99(R2009).....Malleable Iron Castings
- A48-03(R2008).....Gray Iron Castings

- A53-10.....Pipe, Steel, Black and Hot-Dipped, Zinc-Coated
Welded and Seamless
- A123-09.....Zinc (Hot-Dip Galvanized) Coatings on Iron and
Steel Products
- A167-99(R2009).....Stainless and Heat-Resisting Chromium-Nickel
Steel Plate, Sheet and Strip
- A269-10.....Seamless and Welded Austenitic Stainless Steel
Tubing for General Service
- A307-10.....Carbon Steel Bolts and Studs, 60,000 PSI Tensile
Strength
- A312/A312M-09.....Seamless, Welded, and Heavily Cold Worked
Austenitic Stainless Steel Pipes
- A391/A391M-07.....Grade 80 Alloy Steel Chain
- A653/A653M-10.....Steel Sheet, Zinc Coated (Galvanized) or Zinc-
Iron Alloy Coated (Galvannealed) by the Hot-Dip
Process
- A786/A786M-09.....Rolled Steel Floor Plate
- B221-08.....Aluminum and Aluminum-Alloy Extruded Bars, Rods,
Wire, Shapes, and Tubes
- B456-03(R2009).....Electrodeposited Coatings of Copper Plus Nickel
Plus Chromium and Nickel Plus Chromium
- B632-08.....Aluminum-Alloy Rolled Tread Plate
- C1107-08.....Packaged Dry, Hydraulic-Cement Grout (Nonshrink)
- D3656-07.....Insect Screening and Louver Cloth Woven from
Vinyl-Coated Glass Yarns
- F436-10.....Hardened Steel Washers
- F468-10.....Nonferrous Bolts, Hex Cap Screws, and Studs for
General Use
- F593-02(R2008).....Stainless Steel Bolts, Hex Cap Screws, and Studs
- F1667-11.....Driven Fasteners: Nails, Spikes and Staples
- D. American Welding Society (AWS):
- D1.1-10.....Structural Welding Code Steel
- D1.2-08.....Structural Welding Code Aluminum
- D1.3-08.....Structural Welding Code Sheet Steel
- E. National Association of Architectural Metal Manufacturers (NAAMM)
- AMP 521-01.....Pipe Railing Manual
- AMP 500-06.....Metal Finishes Manual
- MBG 531-09.....Metal Bar Grating Manual
- MBG 532-09.....Heavy Duty Metal Bar Grating Manual

- F. Structural Steel Painting Council (SSPC)/Society of Protective Coatings:
 - SP 1-04.....No. 1, Solvent Cleaning
 - SP 2-04.....No. 2, Hand Tool Cleaning
 - SP 3-04.....No. 3, Power Tool Cleaning
- G. Federal Specifications (Fed. Spec):
 - RR-T-650E.....Treads, Metallic and Nonmetallic, Nonskid

PART 2 - PRODUCTS

2.1 DESIGN CRITERIA

- A. In addition to the dead loads, design fabrications to support the following live loads unless otherwise specified.
- B. Railings and Handrails: 900 N (200 pounds) in any direction at any point.
- C. Floor Plates, Gratings, Covers, Trap Doors, Catwalks, and Platforms: 500 kg/m² (100 pounds per square foot).
- D. Manhole Covers: 1200 kg/m² (250 pounds per square foot).

2.2 MATERIALS

- A. Structural Steel: ASTM A36.
- B. Stainless Steel: ASTM A167, Type 302 or 304.
- C. Aluminum, Extruded: ASTM B221, Alloy 6063-T5 unless otherwise specified.
For structural shapes use alloy 6061-T6 and alloy 6061-T4511.
- D. Floor Plate:
 - 1. Steel ASTM A786.
 - 2. Aluminum: ASTM B632.
- E. Steel Pipe: ASTM A53.
 - 1. Galvanized for exterior locations.
 - 2. Type S, Grade A unless specified otherwise.
 - 3. NPS (inside diameter) as shown.
- F. Cast-Iron: ASTM A48, Class 30, commercial pattern.
- G. Malleable Iron Castings: A47.
- H. Primer Paint: As specified in Section 09 91 00, PAINTING.
- I. Stainless Steel Tubing: ASTM A269, type 302 or 304.
- J. Modular Channel Units:
 - 1. Factory fabricated, channel shaped, cold formed sheet steel shapes, complete with fittings bolts and nuts required for assembly.
 - 2. Form channel with in turned pyramid shaped clamping ridges on each side.
 - 3. Provide case hardened steel nuts with serrated grooves in the top edges designed to be inserted in the channel at any point and be

given a quarter turn so as to engage the channel clamping ridges.
Provide each nut with a spring designed to hold the nut in place.

4. Factory finish channels and parts with oven baked primer when exposed to view. Channels fabricated of ASTM A525, G90 galvanized steel may have primer omitted in concealed locations. Finish screws and nuts with zinc coating.
5. Fabricate snap-in closure plates to fit and close exposed channel openings of not more than 0.3 mm (0.0125 inch) thick stainless steel.

K. Grout: ASTM C1107, pourable type.

L. Insect Screening: ASTM D3656.

2.3 HARDWARE

A. Rough Hardware:

1. Furnish rough hardware with a standard plating, applied after punching, forming and assembly of parts; galvanized, cadmium plated, or zinc-coated by electro-galvanizing process. Galvanized G-90 where specified.
2. Use G90 galvanized coating on ferrous metal for exterior work unless non-ferrous metal or stainless is used.

B. Fasteners:

1. Bolts with Nuts:
 - a. ASME B18.2.2.
 - b. ASTM A307 for 415 MPa (60,000 psi) tensile strength bolts.
 - c. ASTM F468 for nonferrous bolts.
 - d. ASTM F593 for stainless steel.
2. Screws: ASME B18.6.1.
3. Washers: ASTM F436, type to suit material and anchorage.
4. Nails: ASTM F1667, Type I, style 6 or 14 for finish work.

2.4 FABRICATION GENERAL

A. Material

1. Use material as specified. Use material of commercial quality and suitable for intended purpose for material that is not named or its standard of quality not specified.
2. Use material free of defects which could affect the appearance or service ability of the finished product.

B. Size:

1. Size and thickness of members as shown.
2. When size and thickness is not specified or shown for an individual part, use size and thickness not less than that used for the same

component on similar standard commercial items or in accordance with established shop methods.

C. Connections

1. Except as otherwise specified, connections may be made by welding, riveting or bolting.
2. Field riveting will not be approved.
3. Design size, number and placement of fasteners, to develop a joint strength of not less than the design value.
4. Holes, for rivets and bolts: Accurately punched or drilled and burrs removed.
5. Size and shape welds to develop the full design strength of the parts connected by welds and to transmit imposed stresses without permanent deformation or failure when subject to service loadings.
6. Use Rivets and bolts of material selected to prevent corrosion (electrolysis) at bimetallic contacts. Plated or coated material will not be approved.
7. Use stainless steel connectors for removable members machine screws or bolts.

D. Fasteners and Anchors

1. Use methods for fastening or anchoring metal fabrications to building construction as shown or specified.
2. Where fasteners and anchors are not shown, design the type, size, location and spacing to resist the loads imposed without deformation of the members or causing failure of the anchor or fastener, and suit the sequence of installation.
3. Use material and finish of the fasteners compatible with the kinds of materials which are fastened together and their location in the finished work.
4. Fasteners for securing metal fabrications to new construction only, may be by use of threaded or wedge type inserts or by anchors for welding to the metal fabrication for installation before the concrete is placed or as masonry is laid.
5. Fasteners for securing metal fabrication to existing construction or new construction may be expansion bolts, toggle bolts, power actuated drive pins, welding, self drilling and tapping screws or bolts.

E. Workmanship

1. General:
 - a. Fabricate items to design shown.

- b. Furnish members in longest lengths commercially available within the limits shown and specified.
 - c. Fabricate straight, true, free from warp and twist, and where applicable square and in same plane.
 - d. Provide holes, sinkages and reinforcement shown and required for fasteners and anchorage items.
 - e. Provide openings, cut-outs, and tapped holes for attachment and clearances required for work of other trades.
 - f. Prepare members for the installation and fitting of hardware.
 - g. Cut openings in gratings and floor plates for the passage of ducts, sumps, pipes, conduits and similar items. Provide reinforcement to support cut edges.
 - h. Fabricate surfaces and edges free from sharp edges, burrs and projections which may cause injury.
2. Welding:
- a. Weld in accordance with AWS.
 - b. Welds shall show good fusion, be free from cracks and porosity and accomplish secure and rigid joints in proper alignment.
 - c. Where exposed in the finished work, continuous weld for the full length of the members joined and have depressed areas filled and protruding welds finished smooth and flush with adjacent surfaces.
 - d. Finish welded joints to match finish of adjacent surface.
3. Joining:
- a. Miter or butt members at corners.
 - b. Where frames members are butted at corners, cut leg of frame member perpendicular to surface, as required for clearance.
4. Anchors:
- a. Where metal fabrications are shown to be preset in concrete, weld 32 x 3 mm (1-1/4 by 1/8 inch) steel strap anchors, 150 mm (6 inches) long with 25 mm (one inch) hooked end, to back of member at 600 mm (2 feet) on center, unless otherwise shown.
 - b. Where metal fabrications are shown to be built into masonry use 32 x 3 mm (1-1/4 by 1/8 inch) steel strap anchors, 250 mm (10 inches) long with 50 mm (2 inch) hooked end, welded to back of member at 600 mm (2 feet) on center, unless otherwise shown.
5. Cutting and Fitting:
- a. Accurately cut, machine and fit joints, corners, copes, and miters.
 - b. Fit removable members to be easily removed.

- c. Design and construct field connections in the most practical place for appearance and ease of installation.
 - d. Fit pieces together as required.
 - e. Fabricate connections for ease of assembly and disassembly without use of special tools.
 - f. Joints firm when assembled.
 - g. Conceal joining, fitting and welding on exposed work as far as practical.
 - h. Do not show rivets and screws prominently on the exposed face.
 - i. The fit of components and the alignment of holes shall eliminate the need to modify component or to use exceptional force in the assembly of item and eliminate the need to use other than common tools.
- F. Finish:
- 1. Finish exposed surfaces in accordance with NAAMM Metal Finishes Manual.
 - 2. Aluminum: NAAMM AMP 501.
 - a. Clear anodic coating, AA-C22A41, chemically etched medium matte, with Architectural Class 1, 0.7 mils or thicker.
 - 3. Steel and Iron: NAAMM AMP 504.
 - a. Zinc coated (Galvanized): ASTM A123, G90 unless noted otherwise.
 - b. Shop Prime Painting:
 - 1) Surfaces of Ferrous metal:
 - a) Items not specified to have other coatings.
 - b) Galvanized surfaces specified to have prime paint.
 - c) Remove all loose mill scale, rust, and paint, by hand or power tool cleaning as defined in SSPC-SP2 and SP3.
 - d) Clean of oil, grease, soil and other detrimental matter by use of solvents or cleaning compounds as defined in SSPC-SP1.
 - e) After cleaning and finishing apply one coat of primer as specified in Section 09 91 00, PAINTING.
 - 2) Non ferrous metals: Comply with MAAMM-500 series.
- G. Protection:
- 1. Insulate aluminum surfaces that will come in contact with concrete, masonry, plaster, or metals other than stainless steel, zinc or white bronze by giving a coat of heavy-bodied alkali resisting bituminous paint or other approved paint in shop.

2. Spot prime all abraded and damaged areas of zinc coating which expose the bare metal, using zinc rich paint on hot-dip zinc coat items and zinc dust primer on all other zinc coated items.

2.5 SUPPORTS

A. General:

1. Fabricate ASTM A36 structural steel shapes as shown.
2. Use clip angles or make provisions for welding hangers and braces to overhead construction.
3. Field connections may be welded or bolted.

B. For Wall Mounted Items:

1. For items supported by metal stud partitions.
2. Steel strip or hat channel minimum of 1.5 mm (0.0598 inch) thick.
3. Steel strip minimum of 150 mm (6 inches) wide, length extending one stud space beyond end of item supported.
4. Steel hat channels where shown. Flange cut and flattened for anchorage to stud.
5. Structural steel tube or channel for grab bar at water closets floor to structure above with clip angles or end plates formed for anchors.
6. Use steel angles for thru wall counters. Drill angle for fasteners at ends and not over 100 mm (4 inches) on center between ends.

C. Supports for Items at Various Conditions at Suspended Ceilings:

1. Fabricate of structural steel shapes as shown.
2. Drill for anchor bolts of suspended item.

D. Supports for Communion Rail Posts in Chapel:

1. Fabricate one steel plate support for each post as shown.
2. Drill for fasteners.

2.6 FRAMES

A. Elevator Entrance Wall Opening.

1. Fabricate of channel shapes, plates, and angles as shown.
2. Weld or bolt head to jamb as shown.
3. Weld clip angles to bottom of frame and top of jamb members extended to structure above for framed construction.
 - a. Provide holes for anchors.
 - b. Weld head to jamb members.

B. Channel Door Frames:

1. Fabricate of structural steel channels of size shown.
2. Miter and weld frames at corners.
3. Where anchored to masonry or embedded in concrete, weld to back of frame at each jamb, 5 mm (3/16 inch) thick by 44 mm (1-3/4 inch) wide

steel strap anchors with ends turned 50 mm (2 inches), and of sufficient length to extend at least 300 mm (12 inches) into wall. Space anchors 600 mm (24 inches) above bottom of frame and 600 mm (24 inches) o.c. to top of jamb. Weld clip angles to bottom of jambs and provide holes for expansion bolts.

4. Where anchored to concrete or masonry in prepared openings, drill holes at jambs for anchoring with expansion bolts. Weld clip angles to bottom of frame and provide holes for expansion bolt anchors as shown. Drill holes starting 600 mm (24 inches) above bottom of frame and 600 mm (24 inches) o.c. to top of jamb and at top of jamb. Provide pipe spacers at holes welded to channel.
5. Where closure plates are shown, continuously weld them to the channel flanges.
6. Weld continuous 19 x 19 x 3 mm (3/4 x 3/4 x 1/8 inch) thick steel angles to the interior side of each channel leg at the head and jambs to form a caulking groove.
7. Prepare frame for installation of hardware specified in Section 08 71 00, DOOR HARDWARE.
 - a. Cut a slot in the lock jamb to receive the lock bolt.
 - b. Where shown use continuous solid steel bar stops at perimeter of frame, weld or secure with countersunk machine screws at not more than 450 mm (18 inches) on center.

C. Frames for Breech Opening:

1. Fabricate from steel channels, or combination of steel plates and angles to size and contour shown.
2. Weld strap anchors on back of frame at not over 600 mm (2 feet) on centers for concrete or masonry openings.

2.7 GUARDS

A. Wall Corner Guards:

1. Fabricate from steel angles and furnish with anchors as shown.
2. Continuously weld anchor to angle.

B. Guard Angles for Overhead Doors:

1. Cut away top portion of outstanding leg of angle and extend remaining portion of angle up wall.
2. Weld filler piece across head of opening to jamb angles.
3. Make provisions for fasteners and anchorage.

C. Edge Guard Angles for Openings in slabs.

1. Fabricate from steel angles of sizes and with anchorage shown.

2. Where size of angle is not shown, provide 50 x 50 x 6 mm (2 x 2 x 1/4 inch) steel angle with 32 x 5 mm (1-1/4 x 3/16 inch) strap anchors, welded to back.
3. Miter or butt angles at corners and weld.
4. Use one anchor near end and three feet on centers between end anchors.

D. Wheel Guards:

1. Construct wheel guards of not less than 16 mm (5/8 inch) thick cast iron.
2. Provide corner type, with flanges for bolting to walls.

2.8 GRATINGS

- A. Fabricate gratings to support live loads specified and a concentrated load as specified.
- B. Provide clearance at all sides to permit easy removal of grating.
- C. Make cutouts in gratings with 6 mm (1/4 inch) minimum to 25 mm (one inch) maximum clearance for penetrations or passage of pipes and ducts. Edge band cutouts.
- D. Fabricate in sections not to exceed 2.3 m² (25 square feet) in area and 90 kg (200 pounds) in weight.

E. Fabricate sections of grating with end-banding bars.

F. Fabricate angle frames and supports, including anchorage as shown.

1. Fabricate intermediate supporting members from "T's" or angles.
2. Locate intermediate supports to support grating section edges.
3. Fabricate frame to finish flush with top of grating.
4. Locate anchors at ends and not over 600 mm (24 inches) o.c.
5. Butt or miter, and weld angle frame at corners.

G. Steel Bar Gratings:

1. Fabricate grating using steel bars, frames, supports and other members shown in accordance with Metal Bar Grating Manual.
2. Galvanize steel members after fabrication in accordance with ASTM A123, G-90 for exterior gratings, gratings in concrete floors, and interior grating where specified.
3. Interior gratings: Prime paint unless specified galvanized.
4. Use serrated bars for exterior gratings and interior gratings.

H. Cast Iron Gratings:

1. Fabricate gratings to support a live load of 23940 Pa (500 pounds per square foot).
2. Fabricate gratings and frames for gutter type drains from cast-iron conforming to ASTM A48.

3. Fabricate gratings in section not longer than 1200 mm (4 feet) or over 90 kg (200 pounds) and fit so as to be readily removable.

2.9 LOOSE LINTELS

- A. Furnish lintels of sizes shown. Where size of lintels is not shown, provide the sizes specified.
- B. Fabricate lintels with not less than 150 mm (6 inch) bearing at each end for nonbearing masonry walls, and 200 mm (8 inch) bearing at each end for bearing walls.
- C. Provide one angle lintel for each 100 mm (4 inches) of masonry thickness as follows except as otherwise specified or shown.
 1. Openings 750 mm to 1800 mm (2-1/2 feet to 6 feet) - 100 x 90 x 8 mm (4 x 3-1/2 x 5/16 inch).
 2. Openings 1800 mm to 3000 mm (6 feet to 10 feet) - 150 x 90 x 9 mm (6 x 3-1/2 x 3/8 inch).
- D. For 150 mm (6 inch) thick masonry openings 750 mm to 3000 mm (2-1/2 feet to 10 feet) use one angle 150 x 90 x 9 mm (6 x 3-1/2 x 3/8 inch).
- E. Provide bearing plates for lintels where shown.
- F. Weld or bolt upstanding legs of double angle lintels together with 19 mm (3/4 inch bolts) spaced at 300 mm (12 inches) on centers.
- G. Insert spreaders at bolt points to separate the angles for insertion of metal windows, louver, and other anchorage.
- H. Where shown or specified, punch upstanding legs of single lintels to suit size and spacing of anchor bolts.
- I. Elevator Entrance:
 1. Fabricate lintel from plate bent to channel shape, and provide a minimum of 100 mm (4 inch) bearing each end.
 2. Cut away the front leg of the channel at each end to allow for concealment behind elevator hoistway entrance frame.

2.10 SHELF ANGLES

- A. Fabricate from steel angles of size shown.
- B. Fabricate angles with horizontal slotted holes for 19 mm (3/4 inch) bolts spaced at not over 900 mm (3 feet) on centers and within 300 mm (12 inches) of ends.
- C. Provide adjustable malleable iron inserts for embedded in concrete framing.

2.11 PLATE DOOR SILL

- A. Fabricate of checkered plate as detailed.
 1. Aluminum Plate: ASTM B632, 3 mm (0.125 inch) thick.
 2. Steel Plate: ASTM A786, 3 mm (0.125 inch thick), galvanized G90.

- B. Fabricate for anchorage with flat head countersunk bolts at each end and not over 300 mm (12 inches), o.c.

2.12 SAFETY NOSINGS

- A. Fed. Spec. RR-T-650, Type C.
 - 1. Aluminum: Class 2, Style 2.
 - 2. Cast iron: Class 4.
- B. Fabricate nosings for exterior use from cast aluminum, and nosings for interior use from either cast aluminum or cast iron. Use one Class throughout.
- C. Fabricate nosings approximately 100 mm (4 inches) wide with not more than 9 mm (3/8 inch) nose.
- D. Provide nosings with integral type anchors spaced not more than 100 mm (4 inches) from each end and intermediate anchors spaced approximately 375 mm (15 inches) on center.
- E. Fabricate nosings to extend within 100 mm (4 inches) of ends of concrete stair treads except where shown to extend full width.
- F. Fabricate nosings to extend full width between stringers of metal stairs and full width of door openings.
- G. On curved steps fabricate to terminate at point of curvature of steps having short radius curved ends.

2.13 RAILINGS

- A. In addition to the dead load design railing assembly to support live load specified.
- B. Fabrication General:
 - 1. Provide continuous welded joints, dressed smooth and flush.
 - 2. Standard flush fittings, designed to be welded, may be used.
 - 3. Exposed threads will not be approved.
 - 4. Form handrail brackets to size and design shown.
 - 5. Exterior Post Anchors.
 - a. Fabricate tube or pipe sleeves with closed ends or plates.
 - b. Where inserts interfere with reinforcing bars, provide flanged fittings welded or threaded to posts for securing to concrete with expansion bolts.
 - c. Provide heavy pattern sliding flange base plate with set screws at base of pipe or tube posts.
 - 6. Interior Post Anchors:
 - a. Provide flanged fittings for securing fixed posts to floor with expansion bolts, unless shown otherwise.
 - b. Weld or thread flanged fitting to posts at base.

- c. For securing removable posts to floor, provide close fitting sleeve insert or inverted flange base plate with stud bolts or rivets concrete anchor welded to the base plate.
 - d. Provide sliding flange base plate on posts secured with set screws.
 - e. Weld flange base plate to removable posts set in sleeves.
- C. Handrails:
- 1. Close free ends of rail with flush metal caps welded in place except where flanges for securing to walls with bolts are shown.
 - 2. Make provisions for attaching handrail brackets to wall, posts, and handrail as shown.
- D. Steel Pipe Railings:
- 1. Fabricate of steel pipe with welded joints.
 - 2. Number and space of rails as shown.
 - 3. Space posts for railings not over 1800 mm (6 feet) on centers between end posts.
 - 4. Form handrail brackets from malleable iron.
 - 5. Fabricate removable sections with posts at end of section.
6. Removable Rails:
- a. Provide "U" shape brackets at each end to hold removable rail as shown. Use for top and bottom horizontal rail when rails are joined together with vertical members.
 - b. Secure rail to brackets with 9 mm (3/8 inch) stainless steel through bolts and nuts at top rail only when rails joined with vertical members.
 - c. Continuously weld brackets to post.
 - d. Provide slotted bolt holes in rail bracket.
 - e. Weld bolt heads flush with top of rail.
 - f. Weld flanged fitting to post where posts are installed in sleeves.
7. Opening Guard Rails:
- a. Fabricate rails with flanged fitting at each end to fit between wall opening jambs.
 - b. Design flange fittings for fastening with machine screws to steel plate anchored to jambs.
 - c. Fabricate rails for floor openings for anchorage in sleeves.
- E. Aluminum Railings:
- 1. Fabricate from extruded aluminum.
 - 2. Use tubular posts not less than 3 mm (0.125 inch) wall thickness for exterior railings.

3. Punch intermediate rails and bottom of top rails for passage of posts and machine to a close fit.
4. Where shown use extruded channel sections for top rail with 13 mm (1/2 inch) thick top cover plates and closed ends.
5. Fabricate brackets of extruded or wrought aluminum as shown.
6. Fabricate stainless pipe sleeves with closed bottom at least six inches deep having internal dimensions at least 13 mm (1/2 inch) greater than external dimensions of posts where set in concrete.

PART 3 - EXECUTION

3.1 INSTALLATION, GENERAL

- A. Set work accurately, in alignment and where shown, plumb, level, free of rack and twist, and set parallel or perpendicular as required to line and plane of surface.
- B. Items set into concrete or masonry.
 1. Provide temporary bracing for such items until concrete or masonry is set.
 2. Place in accordance with setting drawings and instructions.
 3. Build strap anchors, into masonry as work progresses.
- C. Set frames of gratings, covers, corner guards, trap doors and similar items flush with finish floor or wall surface and, where applicable, flush with side of opening.
- D. Field weld in accordance with AWS.
 1. Design and finish as specified for shop welding.
 2. Use continuous weld unless specified otherwise.
- E. Install anchoring devices and fasteners as shown and as necessary for securing metal fabrications to building construction as specified. Power actuated drive pins may be used except for removable items and where members would be deformed or substrate damaged by their use.
- F. Spot prime all abraded and damaged areas of zinc coating as specified and all abraded and damaged areas of shop prime coat with same kind of paint used for shop priming.
- G. Isolate aluminum from dissimilar metals and from contact with concrete and masonry materials as required to prevent electrolysis and corrosion.
- H. Secure escutcheon plate with set screw.

3.2 INSTALLATION OF SUPPORTS

- A. Anchorage to structure.
 1. Secure angles or channels and clips to overhead structural steel by continuous welding unless bolting is shown.

2. Secure supports to concrete inserts by bolting or continuous welding as shown.
3. Secure supports to mid height of concrete beams when inserts do not exist with expansion bolts and to slabs, with expansion bolts. unless shown otherwise.
4. Secure steel plate or hat channels to studs as detailed.

B. Supports for Wall Mounted items:

1. Locate center of support at anchorage point of supported item.
2. Locate support at top and bottom of wall hung cabinets.
3. Locate support at top of floor cabinets and shelving installed against walls.
4. Locate supports where required for items shown.

3.3 DOOR FRAMES

- A. Secure clip angles at bottom of frames to concrete slab with expansion bolts as shown.
- B. Level and plumb frame; brace in position required.
- C. At masonry, set frames in walls so anchors are built-in as the work progresses unless shown otherwise.
- D. Set frames in formwork for frames cast into concrete.
- E. Where frames are set in prepared openings, bolt to wall with spacers and expansion bolts.

3.4 OTHER FRAMES

- A. Set frame flush with surface unless shown otherwise.
- B. Anchor frames at ends and not over 450 mm (18 inches) on centers unless shown otherwise.
- C. Set in formwork before concrete is placed.

3.5 GUARDS

- A. Steel Angle Corner Guards:
 1. Build into masonry as the work progress.
 2. Set into formwork before concrete is placed.
 3. Set angles flush with edge of opening and finish floor or wall or as shown.
 4. At existing construction fasten angle and filler piece to adjoining construction with 16 mm (5/8 inch) diameter by 75 mm (3 inch) long expansion bolts 450 mm (18 inches) on center.
 5. Install Guard Angles at Edges of Trench, Stairwell where shown.
- B. Channel Guard at Top Edge of Concrete Platforms:
 1. Install in formwork before concrete is placed.
 2. Set channel flush with top of the platform.

C. Wheel Guards:

1. Set flanges of wheel guard at least 50 mm (2 inches) into pavement.
2. Anchor to walls as shown, expansion bolt if not shown.

3.6 GRATINGS

- A. Set grating flush with finish floor; top of curb, or areaway wall. Set frame so that horizontal leg of angle frame is flush with face of wall except when frame is installed on face of wall.
- B. Set frame in formwork before concrete is placed.
- C. Where grating terminates at a wall bolt frame to concrete or masonry with expansion bolts unless shown otherwise.
- D. Secure removable supporting members in place with stainless steel bolts.
- E. Bolt gratings to supports.

3.7 STEEL LINTELS

- A. Use lintel sizes and combinations shown or specified.
- B. Install lintels with longest leg upstanding, except for openings in 150 mm (6 inch) masonry walls install lintels with longest leg horizontal.
- C. Install lintels to have not less than 150 mm (6 inch) bearing at each end for nonbearing walls, and 200 mm (8 inch) bearing at each end for bearing walls.

3.8 SHELF ANGLES

- A. Anchor shelf angles with 19 mm (3/4 inch) bolts unless shown otherwise in adjustable malleable iron inserts, set level at elevation shown.
- B. Provide expansion space at end of members.

3.9 PLATE DOOR SILL

- A. Install after roofing base flashing and counter flashing work is completed.
- B. Set in sealant and bolt to curb.

3.10 SAFETY NOSINGS

- A. Except as specified and where preformed rubber treads are shown or specified install safety nosings at the following:
 1. Exterior concrete steps.
 2. Door sills of areaway entrances curbs.
 3. Exposed edges of curbs of door sills at transformer and service rooms.
 4. Interior concrete steps, including concrete filled treads of metal stairs of service stairs.
- B. Install flush with horizontal and vertical surfaces.
- C. Install nosing to within 100 mm (4 inches) of ends of concrete stair treads, except where shown to extend full width.

- D. Extend nosings full width of door openings.
- E. Extend nosings, full width between stringers of metal stairs, and terminate at point of curvature of steps having short radius curved ends.

3.11 RAILINGS

A. Steel Posts:

- 1. Secure fixed posts to concrete with expansion bolts through flanged fittings except where sleeves are shown with pourable grout.
- 2. Install sleeves in concrete formwork.
- 3. Set post in sleeve and pour grout to surface. Apply beveled bead of urethane sealant at perimeter of post or under flange fitting as specified in Section 07 92 00, JOINT SEALANTS—on exterior posts.
- 4. Secure removable posts to concrete with either machine screws through flanged fittings which are secured to inverted flanges embedded in and set flush with finished floor, or set posts in close fitting pipe sleeves without grout.
- 5. Secure sliding flanged fittings to posts at base with set screws.
- 6. Secure fixed flanged fittings to concrete with expansion bolts.
- 7. Secure posts to steel with welds.

B. Aluminum Railing:

- 1. Install pipe sleeves in concrete formwork.
- 2. Set posts in sleeve and pour grout to surface on exterior locations and to within 6 mm (1/4 inch) of surface for interior locations except to where posts are required to be removable.
- 3. Apply beveled bead of urethane sealant over sleeve at post perimeter for exterior posts and flush with surface for interior posts as specified in Section 07 92 00, JOINT SEALANTS.

C. Anchor to Walls:

- 1. Anchor rails to concrete or solid masonry with machine screws through flanged fitting to steel plate.
 - a. Anchor steel plate to concrete or solid masonry with expansion bolts.
 - b. Anchor steel plate to hollow masonry with toggle bolts.
- 2. Anchor flanged fitting with toggle bolt to steel support in frame walls.

D. Removable Rails:

- 1. Rest rails in brackets at each end and secure to bracket with stainless steel bolts and nuts where part of a continuous railing.

2. Rest rail posts in sleeves where not part of a continuous railing. Do not grout posts.

E. Handrails:

1. Anchor brackets for metal handrails as detailed.
2. Install brackets within 300 mm (12 inches) of return of walls, and at evenly spaced intermediate points not exceeding 1200 mm (4 feet) on centers unless shown otherwise.
3. Expansion bolt to concrete or solid masonry.
4. Toggle bolt to installed supporting frame wall and to hollow masonry unless shown otherwise.

3.12 STEEL COMPONENTS FOR MILLWORK ITEMS

Coordinate and deliver to Millwork fabricator for assembly where millwork items are secured to metal fabrications.

3.13 CLEAN AND ADJUSTING

- A. Adjust movable parts including hardware to operate as designed without binding or deformation of the members centered in the opening or frame and, where applicable, contact surfaces fit tight and even without forcing or warping the components.
- B. Clean after installation exposed prefinished and plated items and items fabricated from stainless steel, aluminum and copper alloys, as recommended by the metal manufacture and protected from damage until completion of the project.

- - - E N D - - -

SECTION 05 70 00
WIRE METAL MESH

PART 1 - GENERAL

1.1 RELATED DOCUMENTS

- A. Drawings and general provisions of the Contract, including General and Supplementary Conditions and Division 01 Specification Sections, apply to this Section.

1.2 SUMMARY

- A. Section Includes:
 - 1. Wire metal mesh with aluminum "U" frame.
 - 2. Aluminum framing members, structural design and connection details.

1.3 COORDINATION

- A. Coordinate installation of anchorages for decorative metal items. Furnish setting drawings, templates, and directions for installing anchorages, including sleeves, concrete inserts, anchor bolts, and items with integral anchors, that are to be embedded in concrete or masonry. Deliver such items to Project site in time for installation.

1.4 PREINSTALLATION MEETINGS

- A. Preinstallation Conference: Conduct conference at Project site.

1.5 ACTION SUBMITTALS

- A. Product Data: For each type of product, including finishing materials.
- B. Shop Drawings: Show fabrication and installation details for decorative metal mesh and tube frame support.
 - 1. Include plans, elevations, component details, and attachment details.
 - 2. Indicate materials and profiles of each decorative metal member, fittings, joinery, finishes, fasteners, anchorages, and accessory items.
 - 3. Provide structural engineered design and connections of aluminum tube frame supporting the metal mesh. Include anchor points and connection details.
- C. Samples for Initial Selection: For products involving selection of color, texture, or design
- D. Samples for Verification: For each type of exposed finish.
 - 1. Samples of welded joints showing quality of workmanship

1.6 INFORMATIONAL SUBMITTALS

- A. Qualification Data: For fabricator and Structural Engineer.

- B. Welding certificates.

1.7 QUALITY ASSURANCE

- A. Fabricator Qualifications: A firm experienced in producing decorative metal similar to that indicated for this Project and with a record of successful in-service performance, as well as sufficient production capacity to produce required units.
- B. Welding Qualifications: Qualify procedures and personnel according to the following:
 - 1. AWS D1.1/D1.1M, "Structural Welding Code - Steel."
 - 2. AWS D1.2/D1.2M, "Structural Welding Code - Aluminum."
 - 3. AWS D1.3/D1.3M, "Structural Welding Code - Sheet Steel."
 - 4. AWS D1.6/D1.6M, "Structural Welding Code - Stainless Steel."
- C. Mockups: Build mockups to verify selections made under Sample submittals, to demonstrate aesthetic effects, and to set quality standards for fabrication and installation.
 - 1. Build mockups for the following types of decorative metal:
 - a. Metal Mesh: Corner showing the metal mesh and metal U edge to be used and the connections.
 - 2. Subject to compliance with requirements, approved mockups may become part of the completed Work if undisturbed at time of Substantial Completion.

1.8 DELIVERY, STORAGE, AND HANDLING

- A. Store decorative metal in a well-ventilated area, away from uncured concrete and masonry, and protected from weather, moisture, soiling, abrasion, extreme temperatures, and humidity.
- B. Deliver and store cast-metal products in wooden crates surrounded by enough packing material to ensure that products are not cracked or otherwise damaged.

1.9 FIELD CONDITIONS

- A. Field Measurements: Verify actual locations of walls and other construction contiguous with decorative metal by field measurements before fabrication and indicate measurements on Shop Drawings.

PART 2 - PRODUCTS

2.1 WIRE METAL MESH

- A. Subject to compliance with requirements, provide the following wire metal mesh and associated support system with appearance equivalent to the basis of design product:

1. Type: Square wire mesh
2. Material: Metal galvanized wire, PVC Coated, White, .08" dia minimum.
3. Size: 2"x2" (or approved alternate)
4. Percent open area: >80%
5. Min Panel Size: Width 48", Length 100"
6. Color: White as selected by architect from manufacturers full range.
7. Basis of Design Manufacturer: MCNICHOLS METAL; Quality Vinylmesh™ Wire Mesh

2.2 METALS, GENERAL

- A. Metal Surfaces, General: Use materials with smooth, flat surfaces unless otherwise indicated. Use materials without seam marks, roller marks, rolled trade names, stains, discolorations, or blemishes.

2.3 ALUMINUM

- A. Fabricate products from alloy and temper recommended by aluminum producer and finisher for type of use and finish indicated, and with strength and durability properties for each aluminum form required not less than that of alloy and temper designated below.
- B. Bars and Shapes: ASTM B 221 (ASTM B 221M), Alloy 6063-T5/T52.
- C. Pipe and "U" Shapes: ASTM B 429/B 429M, Alloy 6063-T6.
- D. Tubing: ASTM B 210 (ASTM B 210M), Alloy 6063-T832.
- E. Plate and Sheet: ASTM B 209 (ASTM B 209M).
- F. Forgings: ASTM B 247 (ASTM B 247M), Alloy 6061-T6.
- G. Castings: ASTM B 26/B 26M, Alloy A356.0-T6.

2.4 STEEL AND IRON

- A. Tubing: ASTM A 500/A 500M (cold formed).
- B. Bars: Hot-rolled, carbon steel complying with ASTM A 29/A 29M, Grade 1010.
- C. Plates, Shapes, and Bars: ASTM A 36/A 36M.
- D. Cast Iron: Either gray iron, ASTM A 48/A 48M, or malleable iron, ASTM A 47/A 47M unless otherwise indicated.
- E. Steel Sheet, Cold Rolled: ASTM A 1008/A 1008M, either commercial steel or structural steel, exposed.

2.5 FASTENERS

- A. Fastener Materials: Unless otherwise indicated, provide the following:

1. Aluminum Items: Aluminum fasteners.
 2. Uncoated-Steel Items: Plated steel fasteners complying with ASTM B 633, Class Fe/Zn 25 for electrodeposited zinc coating where concealed, Type 304 stainless-steel fasteners where exposed.
 3. Galvanized-Steel Items: Plated steel fasteners complying with ASTM B 633, Class Fe/Zn 25 for electrodeposited zinc coating.
 4. Dissimilar Metals: [**Type 304**] [**Type 316**] stainless-steel fasteners.
- B. Fasteners for Anchoring to Other Construction: Unless otherwise indicated, select fasteners of type, grade, and class required to produce connections suitable for anchoring indicated items to other types of construction indicated.
- C. Provide concealed fasteners for interconnecting components and for attaching decorative metal items to other work unless exposed fasteners are unavoidable.
1. Provide Phillips flat-head machine screws for exposed fasteners unless otherwise indicated.
- D. Post-Installed Anchors: Fastener systems with an evaluation report acceptable to authorities having jurisdiction, based on ICC-ES AC193].
1. Material for Interior Locations: Carbon-steel components zinc plated to comply with ASTM B 633 or ASTM F 1941 (ASTM F 1941M), Class Fe/Zn 5 unless otherwise indicated.
 2. Material for Exterior Locations and Where Stainless Steel Is Indicated: Alloy Group **1 (A1)** stainless-steel bolts, ASTM F 593 (ASTM F 738M), and nuts, ASTM F 594 (ASTM F 836M).

2.6 MISCELLANEOUS MATERIALS

- A. Welding Rods and Bare Electrodes: Select according to AWS specifications for metal alloy welded.
1. For aluminum, provide type and alloy as recommended by producer of metal to be welded and as required for color match, strength, and compatibility in fabricated items.
- B. Brazing Rods: For copper alloys, provide type and alloy as recommended by producer of metal to be brazed and as required for color match, strength, and compatibility in fabricated items.
- C. Etching Cleaner for Galvanized Metal: Complying with MPI#25.

- D. Low-Emitting Paints and Coatings: Paints and coatings applied to interior decorative metal items shall comply with the testing and product requirements of the California Department of Public Health's (formerly, the California Department of Health Services') "Standard Method for the Testing and Evaluation of Volatile Organic Chemical Emissions from Indoor Sources Using Environmental Chambers."
- E. Galvanizing Repair Paint: High-zinc-dust-content paint complying with SSPC-Paint 20 and compatible with paints specified to be used over it.
- F. Universal Shop Primer for Ferrous Metal: Fast-curing, lead- and chromate-free, universal modified-alkyd primer complying with MPI#79 and compatible with topcoat.
 - 1. Use primer containing pigments that make it easily distinguishable from zinc-rich primer.
- G. Epoxy Zinc-Rich Primer: Complying with MPI#20 and compatible with topcoat.
- H. Shop Primer for Galvanized Steel: Cementitious galvanized metal primer complying with MPI#26.
- I. Epoxy Intermediate Coat for Steel: Complying with MPI#77 and compatible with primer and topcoat.
- J. Polyurethane Topcoat for Steel: Complying with MPI#72 and compatible with undercoat.
- K. Bituminous Paint: Cold-applied asphalt emulsion complying with ASTM D 1187/D 1187M.

2.7 FABRICATION, GENERAL

- A. Assemble items in the shop to greatest extent possible to minimize field splicing and assembly. Disassemble units only as necessary for shipping and handling limitations. Clearly mark units for reassembly and coordinated installation. Use connections that maintain structural value of joined pieces.
- B. Make up wire-rope assemblies in the shop to field-measured dimensions with fittings machine swaged. Minimize amount of turnbuckle take-up used for dimensional adjustment so maximum amount is available for tensioning wire ropes. Tag wire-rope assemblies and fittings to identify installation locations and orientations for coordinated installation.

- C. Form decorative metal to required shapes and sizes, true to line and level with true curves and accurate angles and surfaces. Finish exposed surfaces to smooth, sharp, well-defined lines and arris.
- D. Form bent-metal corners to smallest radius possible without causing grain separation or otherwise impairing the Work.
- E. Form simple and compound curves in bars, pipe, tubing, and extruded shapes by bending members in jigs to produce uniform curvature for each configuration required; maintain cross section of member throughout entire bend without buckling, twisting, cracking, or otherwise deforming exposed surfaces.
- F. Cut, drill, and punch metals cleanly and accurately. Remove burrs and ease edges to a radius of approximately 1/32 inch (1 mm) unless otherwise indicated. Remove sharp or rough areas on exposed surfaces.
- G. Mill joints to a tight, hairline fit. Cope or miter corner joints. Fabricate connections that will be exposed to weather in a manner to exclude water.
- H. Provide weep holes where water may accumulate. Locate weep holes in inconspicuous locations.
- I. Provide necessary rebates, lugs, and brackets to assemble units and to attach to other work. Cut, reinforce, drill, and tap as needed to receive finish hardware, screws, and similar items unless otherwise indicated.
- J. Comply with AWS for recommended practices in shop welding behind finished surfaces without distorting or discoloring exposed side. Clean exposed welded joints of flux, and dress exposed and contact surfaces.
 - 1. Where welding cannot be concealed behind finished surfaces, finish joints to comply with NOMMA's "Voluntary Joint Finish Standards" for Type 2 Welds: completely sanded joint, some undercutting and pinholes okay.
- K. Provide castings that are sound and free of warp, cracks, blowholes, or other defects that impair strength or appearance. Grind, wire brush, sandblast, and buff castings to remove seams, gate marks, casting flash, and other casting marks.

2.8 FINISHES, GENERAL

- A. Comply with NAAMM's "Metal Finishes Manual for Architectural and Metal Products" for recommendations for applying and designating finishes.

- B. Protect mechanical finishes on exposed surfaces from damage by applying a strippable, temporary protective covering before shipping.

2.9 ALUMINUM FINISHES

- A. Finish designations prefixed by AA comply with the system established by the Aluminum Association for designating aluminum finishes.
- B. Clear Anodic Finish: AAMA 611, AA-M12C22A41, Class I, 0.018 mm or thicker.

2.10 STEEL AND IRON FINISHES

- A. Galvanizing: Hot-dip galvanize products made from rolled, pressed, and forged steel shapes, castings, plates, bars, and strips indicated to be galvanized to comply with ASTM A 123/A 123M.
 - 1. Hot-dip galvanize steel and iron hardware indicated to be galvanized to comply with ASTM A 153/A 153M.
 - 2. Do not quench or apply post-galvanizing treatments that might interfere with paint adhesion.
 - 3. Fill vent and drain holes that will be exposed in finished Work, unless indicated to remain as weep holes, by plugging with zinc solder and filing off smooth.
- B. Preparing Galvanized Items for Shop Priming: After galvanizing, thoroughly clean decorative metal of grease, dirt, oil, flux, and other foreign matter, and treat with etching cleaner.

PART 3 - EXECUTION

3.1 EXAMINATION

- A. Examine substrates and conditions, with Installer present, for compliance with requirements for installation tolerances and other conditions affecting performance of decorative metal.
- B. Proceed with installation only after unsatisfactory conditions have been corrected.

3.2 INSTALLATION, GENERAL

- A. Provide anchorage devices and fasteners where needed to secure decorative metal to in-place construction.
- B. Perform cutting, drilling, and fitting required to install decorative metal. Set products accurately in location, alignment, and elevation, measured from established lines and levels. Provide temporary bracing or anchors in formwork for items to be built into concrete, masonry, or similar construction.

- C. Fit exposed connections accurately together to form tight, hairline joints or, where indicated, uniform reveals and spaces for sealants and joint fillers. Where cutting, welding, and grinding are required for proper shop fitting and jointing of decorative metal, restore finishes to eliminate evidence of such corrective work.
- D. Do not cut or abrade finishes that cannot be completely restored in the field. Return items with such finishes to the shop for required alterations, followed by complete refinishing, or provide new units as required.
- E. Install concealed gaskets, joint fillers, insulation, and flashings as work progresses.
- F. Restore protective coverings that have been damaged during shipment or installation. Remove protective coverings only when there is no possibility of damage from other work yet to be performed at same location.
 - 1. Retain protective coverings intact; remove coverings simultaneously from similarly finished items to preclude nonuniform oxidation and discoloration.
- G. Field Welding: Comply with applicable AWS specification for procedures of manual shielded metal arc welding and requirements for welding and for finishing welded connections in "Fabrication, General" Article. Weld connections that are not to be left as exposed joints but cannot be shop welded because of shipping size limitations.
- H. Field Brazing: Comply with requirements for brazing and for finishing brazed connections in "Fabrication, General" Article. Braze connections that are not to be left as exposed joints but cannot be shop brazed because of shipping size limitations.
- I. Control of Corrosion: Prevent galvanic action and other forms of corrosion by insulating metals and other materials from direct contact with incompatible materials.
 - 1. Coat concealed surfaces of aluminum that will be in contact with grout, concrete, masonry, wood, or dissimilar metals, with a heavy coat of bituminous paint.

3.3 CLEANING AND PROTECTION

- A. Unless otherwise indicated, clean metals by washing thoroughly with clean water and soap, rinsing with clean water, and drying with soft cloths.

- B. Touchup Painting: Immediately after erection, clean field welds, bolted connections, and abraded areas of shop paint and paint exposed areas with same material as used for shop painting to comply with SSPC-PA 1 for touching up shop-painted surfaces.
 - 1. Apply by brush or spray to provide a minimum 2.0-mil (0.05-mm) dry film thickness.
- C. Touchup Painting: Cleaning and touchup painting of field welds, bolted connections, and abraded areas of shop paint in accordance with manufacturer's recommendations.
- D. Galvanized Surfaces: Clean field welds, bolted connections, and abraded areas and repair galvanizing to comply with ASTM A 780/A 780M.
- E. Protect finishes of decorative metal from damage during construction period with temporary protective coverings approved by decorative metal fabricator. Remove protective covering at time of Substantial Completion.
- F. Restore finishes damaged during installation and construction period so no evidence remains of correction work. Return items that cannot be refinished in the field to the shop; make required alterations and refinish entire unit, or provide new units.

--END--